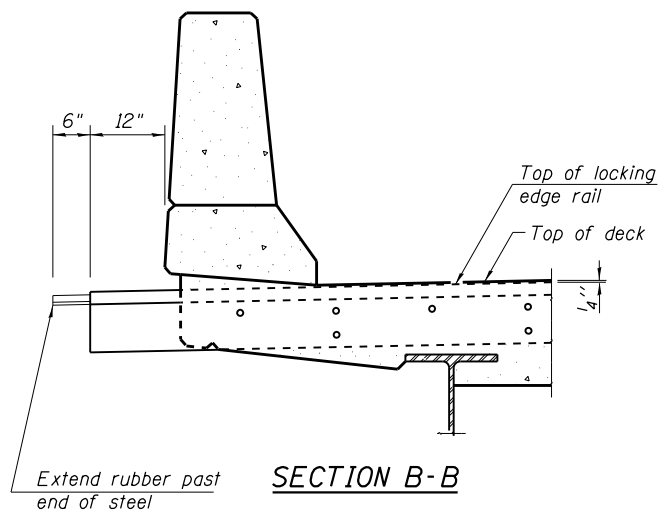
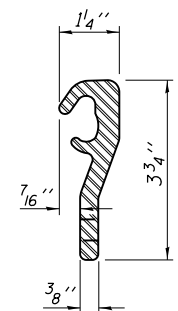


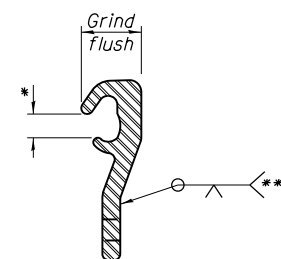
**PLAN THROUGH PARAPET**  
(Abuts & Pier 3)



**SECTION B-B**



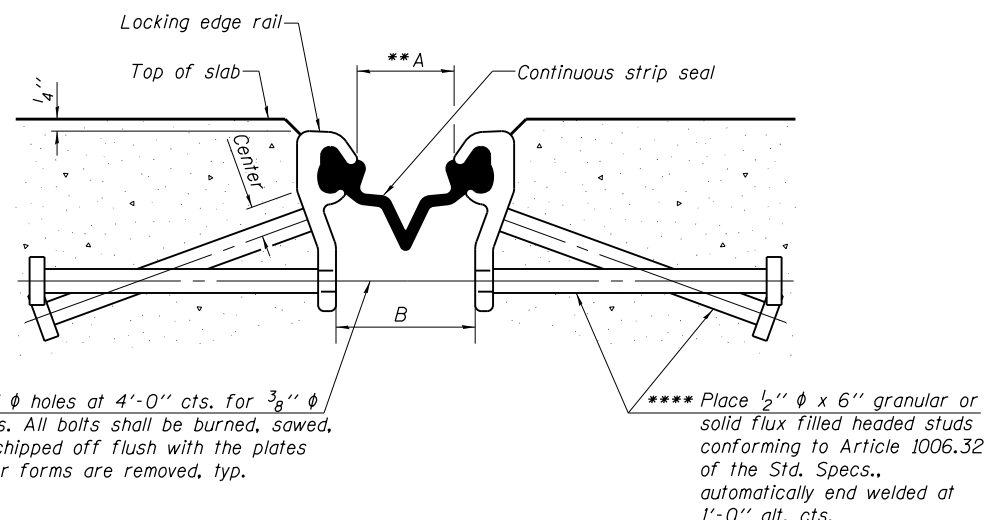
**ROLLED (EXTRUDED) RAIL**



**LOCKING EDGE RAIL SPLICE**

**LOCKING EDGE RAIL**

- \* Omit weld at seal opening.
- \*\* The minimum dimension shall be 1/2" for installation purposes.
- \*\*\* Back gouge not required if complete joint penetration is verified by mock-up.
- \*\*\*\* Granular or solid flux filled headed studs conforming to Article 1006.32 of the Std. Specs., automatically end welded.



**SECTION THRU STRIP SEAL JOINT FOR OVERLAY OVER DECK BEAMS**

**TABLE "A"**

(All dimensions @ 50° F)

Joint	A	B
Abuts.	2"	2 7/8"
Pier 3	1 3/4"	2 5/8"

**Notes:**

The strip seal shall be made continuous and shall have a minimum thickness of 1/4". The configuration of the strip seal shall match the configuration of the Locking Edge Rails.

The height and thickness of the Locking Edge Rails shown are minimum dimensions. The actual configuration of the Locking Edge Rails and matching strip seal may vary from manufacturer to manufacturer. Flanged edge rails will not be allowed.

The inside of the Locking Edge Rail groove shall be free of weld residue. Locking Edge Rails may be spliced at slope discontinuities and stage construction joints.

The manufacturer's recommended installation methods shall be followed.

All steel components shall be galvanized after fabrication according to Article 520.03 of the Standard Specifications.

Maximum space between rail segments at stage lines shall be 3/16", sealed with a suitable sealant

**BILL OF MATERIAL**

Item	Unit	Total
Preformed Joint Strip Seal	Foot	267

**PREFORMED JOINT STRIP SEAL  
WHITE COUNTY  
STRUCTURE NO. 097-0038 (E.B.)  
STRUCTURE NO. 097-0039 (W.B)**

•(97-2-1)RS-2; BSMART 2012-1,2,3

FILE NAME =	USER NAME =	DESIGNED - TWH	REVISED -
		CHECKED - MAS	REVISED -
	PLOT SCALE =	DRAWN - TWH	REVISED -
	PLOT DATE =	CHECKED - MAS	REVISED -

**STATE OF ILLINOIS  
DEPARTMENT OF TRANSPORTATION**

**SHALLOW STRIP SEAL  
SN 097-0038 (EB) & 097-0039 (WB)**

SHEET NO. 10 OF 25 SHEETS

F.A.I. RTE.	SECTION	COUNTY	TOTAL SHEETS	SHEET NO.
64	*	WHITE	54	36
CONTRACT NO. 78282				
ILLINOIS FED. AID PROJECT				