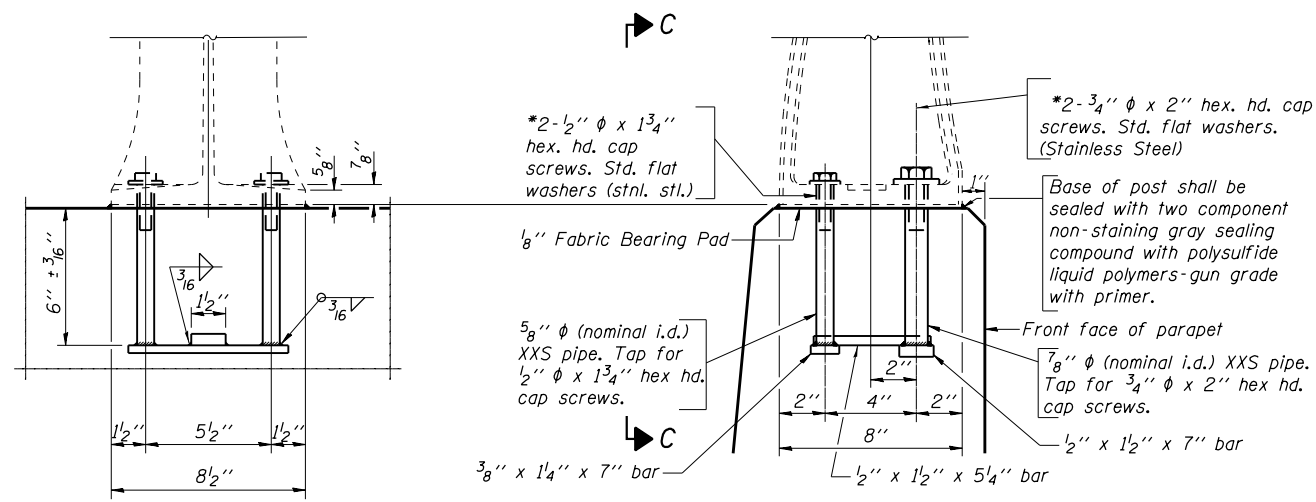


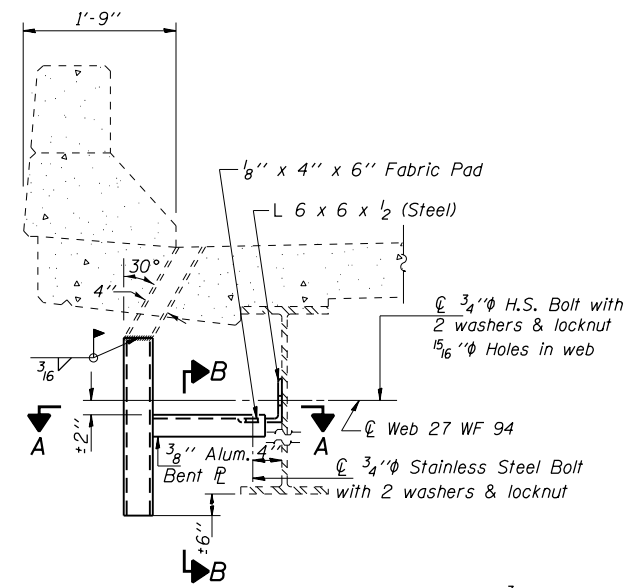
Field drill $\frac{3}{8}$ " ϕ hole for $\frac{1}{4}$ " ϕ threaded rod 13" long with nuts and washers

DRAIN ELIMINATION DETAIL
 12 Locations on SN 097-0051
 14 Locations on SN 097-0052

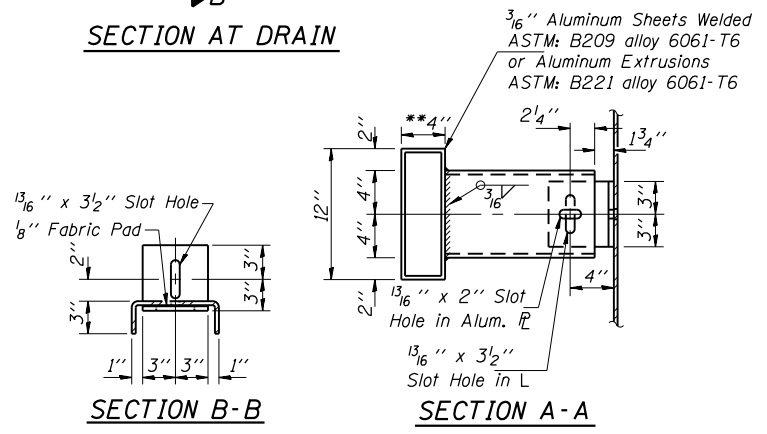


VIEW C-C

RAIL POST DETAILS
 4 Locations on SN 097-0051
 4 Locations on SN 097-0052



SECTION AT DRAIN



DRAIN EXTENSION DETAIL
 14 Locations on SN 097-0051
 16 Locations on SN 097-0052

Notes:

Plug every other existing deck drain and all that are within $\pm 10'$ of the existing substructure. Locations shall be subject to approval by the Engineer. Post shall be normal to parapet.

*In lieu of the cast-in-place anchor device shown, the Contractor has the option of drilling and setting stainless steel anchor rods of the same diameter and grade as the specified cap screws according to Article 509.06 of the Standard Specifications. Embedment shall be according to the manufacturer's specifications.

Removal and and re-erection of the existing aluminum handrail, rail post, and all new applicable hardware, including labor and installation shall be included in the cost of Concrete Removal.

Removal of the existing drain extensions will be included in the cost of Floor Drain Extensions. (No Salvage)

**Verify that this dimension will work in the field before ordering the material or use 4 $\frac{5}{8}$ " if available.

BILL OF MATERIAL

Item	Unit	Total
Floor Drain Extension	Each	30
Plug Existing Deck Drains	Each	26

DRAINS AND RAILING DETAILS
WHITE COUNTY
STRUCTURE NO. 097-0051 (W.B.)
STRUCTURE NO. 097-0052 (E.B.)

FILE NAME =	USER NAME = halsteadtw	DESIGNED - TWH	REVISED -	STATE OF ILLINOIS DEPARTMENT OF TRANSPORTATION	DRAINS AND RAILING DETAILS SN 097-0051 (WB) & 097-0052 (EB)	F.A.I. RFE.	SECTION	COUNTY	TOTAL SHEETS	SHEET NO.
es:\pwork\pwork\pwork\halsteadtw\d0344460\st-t-pln.dgn	DRAWN - TWH	REVISIONS -	64			.	WHITE	54	46	
PLOT SCALE = 3.0000' / in.	CHECKED - MAS	REVISIONS -	CONTRACT NO. 78282							
PLOT DATE = 10/7/2013	DATE - 10/15/09	REVISIONS -	FED. ROAD DIST. NO. ILLINOIS FED. AID PROJECT							
				SCALE:	SHEET NO. 20 OF 25 SHEETS	STA.	TO STA.			