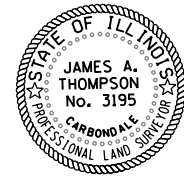


COORDINATE LIST

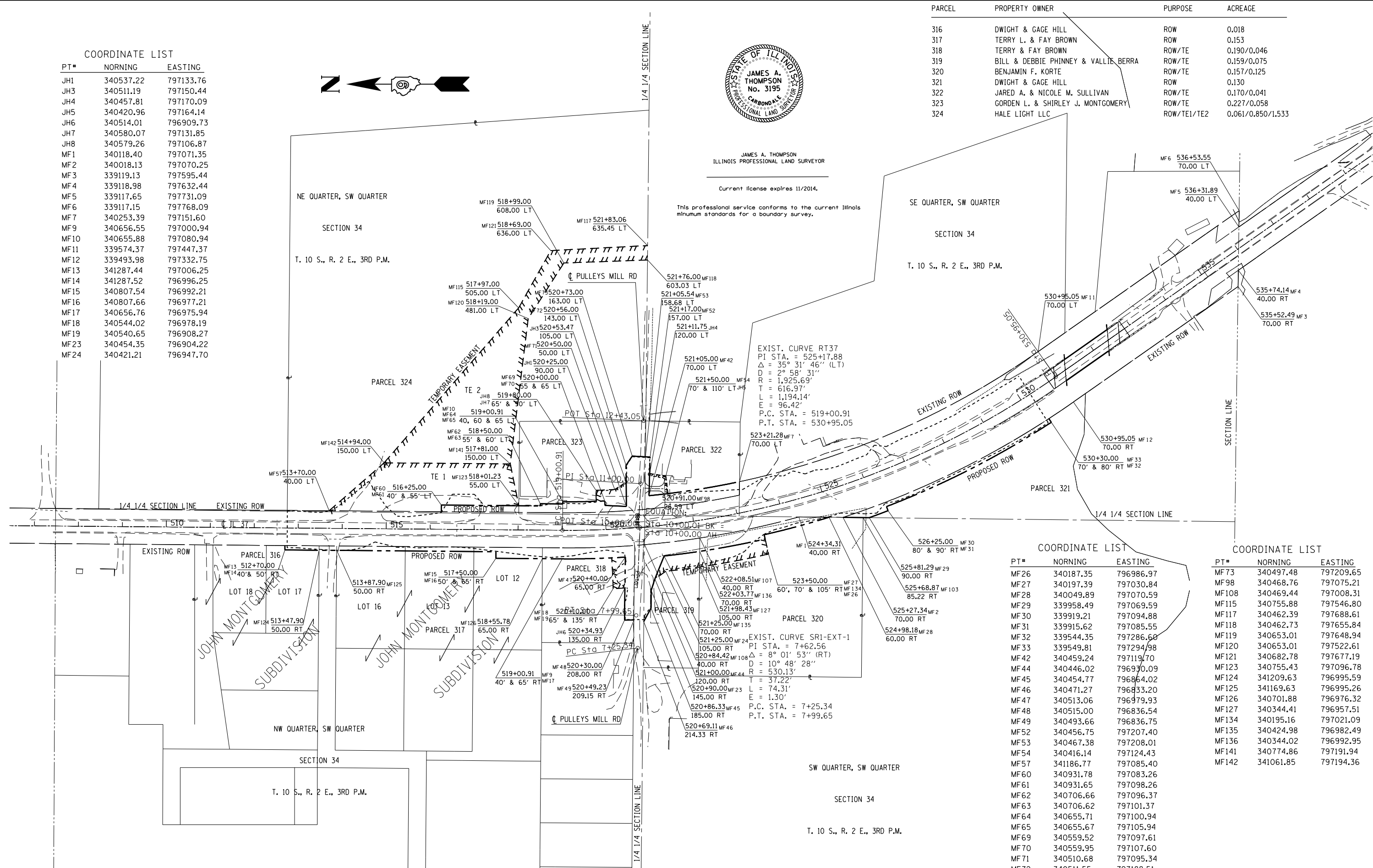
PT#	NORNING	EASTING
JH1	340537.22	797133.76
JH3	340511.19	797150.44
JH4	340457.81	797170.09
JH5	340420.96	797164.14
JH6	340514.01	796909.73
JH7	340580.07	797131.85
JH8	340579.26	797106.87
MF1	340118.40	797071.35
MF2	340018.13	797070.25
MF3	339119.13	797595.44
MF4	339118.98	797632.44
MF5	339117.65	797731.09
MF6	339117.15	797768.09
MF7	340253.39	797151.60
MF9	340656.55	797000.94
MF10	340655.88	797080.94
MF11	339574.37	797447.37
MF12	339493.98	797332.75
MF13	341287.44	797006.25
MF14	341287.52	796996.25
MF15	340807.54	796992.21
MF16	340807.66	796977.21
MF17	340656.76	796975.94
MF18	340544.02	796978.19
MF19	340540.65	796908.27
MF23	340454.35	796904.22
MF24	340421.21	796947.70



JAMES A. THOMPSON
ILLINOIS PROFESSIONAL LAND SURVEYOR
Current license expires 11/2014.

This professional service conforms to the current Illinois minimum standards for a boundary survey.

PARCEL	PROPERTY OWNER	PURPOSE	ACREAGE
316	DWIGHT & GAGE HILL	ROW	0.018
317	TERRY L. & FAY BROWN	ROW	0.153
318	TERRY & FAY BROWN	ROW/TE	0.190/0.046
319	BILL & DEBBIE PHINNEY & VALLIE BERRA	ROW/TE	0.159/0.075
320	BENJAMIN F. KORTE	ROW/TE	0.157/0.125
321	DWIGHT & GAGE HILL	ROW	0.130
322	JARED A. & NICOLE M. SULLIVAN	ROW/TE	0.170/0.041
323	GORDEN L. & SHIRLEY J. MONTGOMERY	ROW/TE	0.227/0.058
324	HALE LIGHT LLC	ROW/TE1/TE2	0.061/0.850/1.533



EXIST. CURVE RT37
PI STA. = 525+17.88
Δ = 35° 31' 46" (LT)
D = 2° 58' 31"
R = 1,925.69'
T = 616.97'
L = 1,194.14'
E = 96.42'
P.C. STA. = 519+00.91
P.T. STA. = 530+95.05

EXIST. CURVE SRI-EXT-1
PI STA. = 7+62.56
Δ = 8° 01' 53" (RT)
D = 10° 48' 28"
R = 530.13'
T = 37.22'
L = 74.31'
E = 1.30'
P.C. STA. = 7+25.34
P.T. STA. = 7+99.65

COORDINATE LIST

PT#	NORNING	EASTING
MF26	340187.35	796986.97
MF27	340197.39	797030.84
MF28	340049.89	797070.59
MF29	339958.49	797069.59
MF30	339919.21	797094.88
MF31	339915.62	797085.55
MF32	339544.35	797286.60
MF33	339549.81	797294.98
MF42	340459.24	797119.70
MF44	340446.02	796970.09
MF45	340454.77	796864.02
MF46	340471.27	796833.20
MF47	340513.06	796979.93
MF48	340515.00	796836.54
MF49	340493.66	796836.75
MF52	340456.75	797207.40
MF53	340467.38	797208.01
MF54	340416.14	797124.43
MF57	341186.77	797085.40
MF60	340931.78	797083.26
MF61	340931.65	797098.26
MF62	340706.66	797096.37
MF63	340706.62	797101.37
MF64	340655.71	797100.94
MF65	340655.67	797105.94
MF69	340559.52	797097.61
MF70	340559.95	797107.60
MF71	340510.68	797095.34
MF72	340511.55	797188.51

COORDINATE LIST

PT#	NORNING	EASTING
MF73	340497.48	797209.65
MF98	340468.76	797075.21
MF108	340469.44	797008.31
MF115	340755.88	797546.80
MF117	340462.39	797688.61
MF118	340462.73	797655.84
MF119	340653.01	797648.94
MF120	340653.01	797522.61
MF121	340682.78	797677.19
MF123	340755.43	797096.78
MF124	341209.63	796995.59
MF125	341169.63	796995.26
MF126	340701.88	796976.32
MF127	340344.41	796957.51
MF134	340195.16	797021.09
MF135	340424.98	796982.49
MF136	340344.02	796992.95
MF141	340774.86	797191.94
MF142	341061.85	797194.36