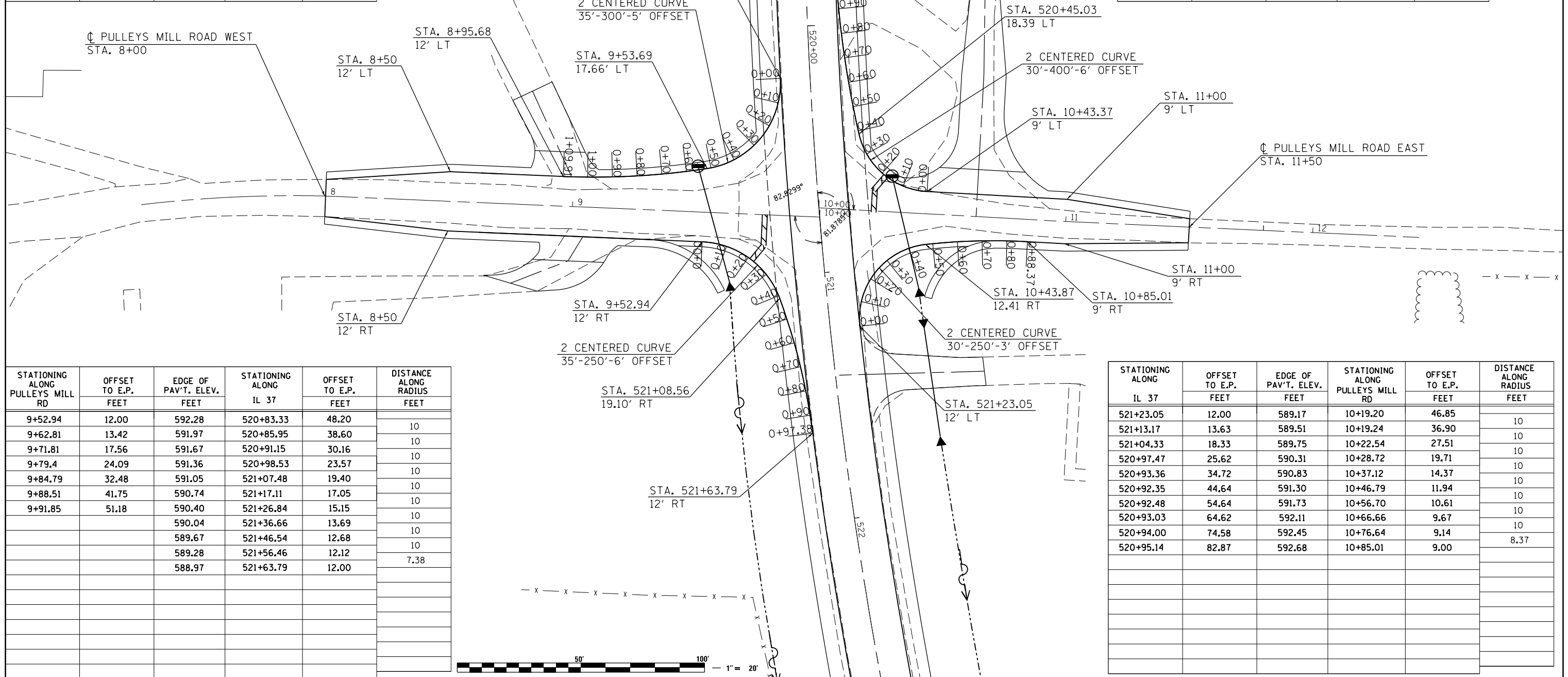


STATIONING ALONG ILLINOIS 37	OFFSET TO E.P. FEET	EDGE OF PAV'T. ELEV. FEET	STATIONING ALONG PULLEYS MILL RD	OFFSET TO E.P. FEET	DISTANCE ALONG RADIUS FEET
520+20.6	12.00	594.12	9+81.76	55.36	10
520+30.4	13.44	593.79	9+81.29	45.41	10
520+39.36	17.65	593.43	9+78.04	35.99	10
520+46.73	24.27	593.07	9+72.27	27.87	10
520+51.92	32.73	592.74	9+64.44	21.70	10
520+54.51	42.34	592.54	9+55.19	17.99	10
520+55.21	52.32	592.54	9+45.36	16.14	10
520+55.55	62.31	592.75	9+35.47	14.65	10
520+55.57	72.31	593.18	9+25.54	13.49	10
520+55.27	82.30	593.61	9+15.58	12.66	10
520+54.65	92.28	594.04	9+05.59	12.16	10
520+53.74	102.14	594.46	8+95.68	12.00	9.91

STATIONING ALONG PULLEYS MILL RD	OFFSET TO E.P. FEET	EDGE OF PAV'T. ELEV. FEET	STATIONING ALONG IL 37	OFFSET TO E.P. FEET	DISTANCE ALONG RADIUS FEET
10+43.37	9.00	591.23	520+70.64	44.19	10
10+33.56	10.65	590.98	520+67.62	34.69	10
10+24.82	15.42	590.79	520+61.65	26.65	10
10+18.13	22.79	591.04	520+53.38	20.96	10
10+14.19	31.94	591.72	520+43.72	18.18	10
10+11.57	41.59	592.09	520+33.74	16.72	10
10+09.19	51.30	592.45	520+23.74	15.45	10
10+07.05	61.07	592.78	520+13.72	14.38	10
10+05.16	70.89	593.11	520+03.68	13.51	10
10+03.51	80.75	593.42	519+93.64	12.84	10
10+02.11	90.65	593.71	519+83.58	12.36	10
10+00.96	100.58	593.99	519+73.52	12.08	10
10+00.13	109.67	594.23	519+64.34	12.00	9.12



STATIONING ALONG PULLEYS MILL RD	OFFSET TO E.P. FEET	EDGE OF PAV'T. ELEV. FEET	STATIONING ALONG IL 37	OFFSET TO E.P. FEET	DISTANCE ALONG RADIUS FEET
9+52.94	12.00	592.28	520+83.33	48.20	10
9+62.81	13.42	591.97	520+85.95	38.60	10
9+71.81	17.56	591.67	520+91.15	30.16	10
9+79.4	24.09	591.36	520+98.53	23.57	10
9+84.79	32.48	591.05	521+07.48	19.40	10
9+88.51	41.75	590.74	521+17.11	17.05	10
9+91.85	51.18	590.40	521+26.84	15.15	10
		590.04	521+36.66	13.69	10
		589.67	521+46.54	12.68	10
		589.28	521+56.46	12.12	10
		588.97	521+63.79	12.00	7.38

STATIONING ALONG IL 37	OFFSET TO E.P. FEET	EDGE OF PAV'T. ELEV. FEET	STATIONING ALONG PULLEYS MILL RD	OFFSET TO E.P. FEET	DISTANCE ALONG RADIUS FEET
521+23.05	12.00	589.17	10+19.20	46.85	10
521+13.17	13.63	589.51	10+19.24	36.90	10
521+04.33	18.33	589.75	10+22.54	27.51	10
520+97.47	25.62	590.31	10+28.72	19.71	10
520+93.36	34.72	590.83	10+37.12	14.37	10
520+92.35	44.64	591.30	10+46.79	11.94	10
520+92.48	54.64	591.73	10+56.70	10.61	10
520+93.03	64.62	592.11	10+66.66	9.67	10
520+94.00	74.58	592.45	10+76.64	9.14	10
520+95.14	82.87	592.68	10+85.01	9.00	8.37