

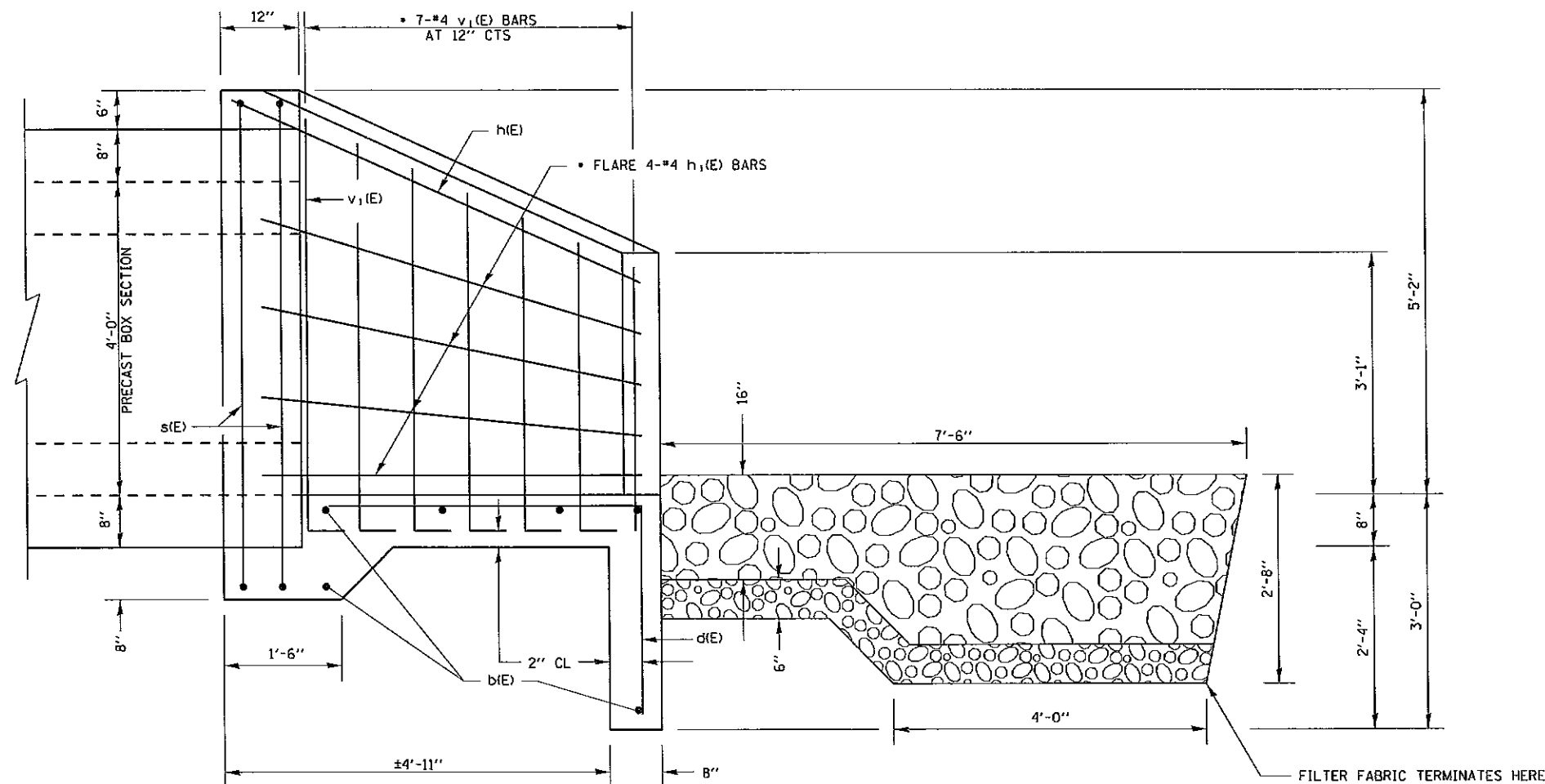
• CUT OR BEND TO FIT

MIN BAR LAP
#4 1'-8"

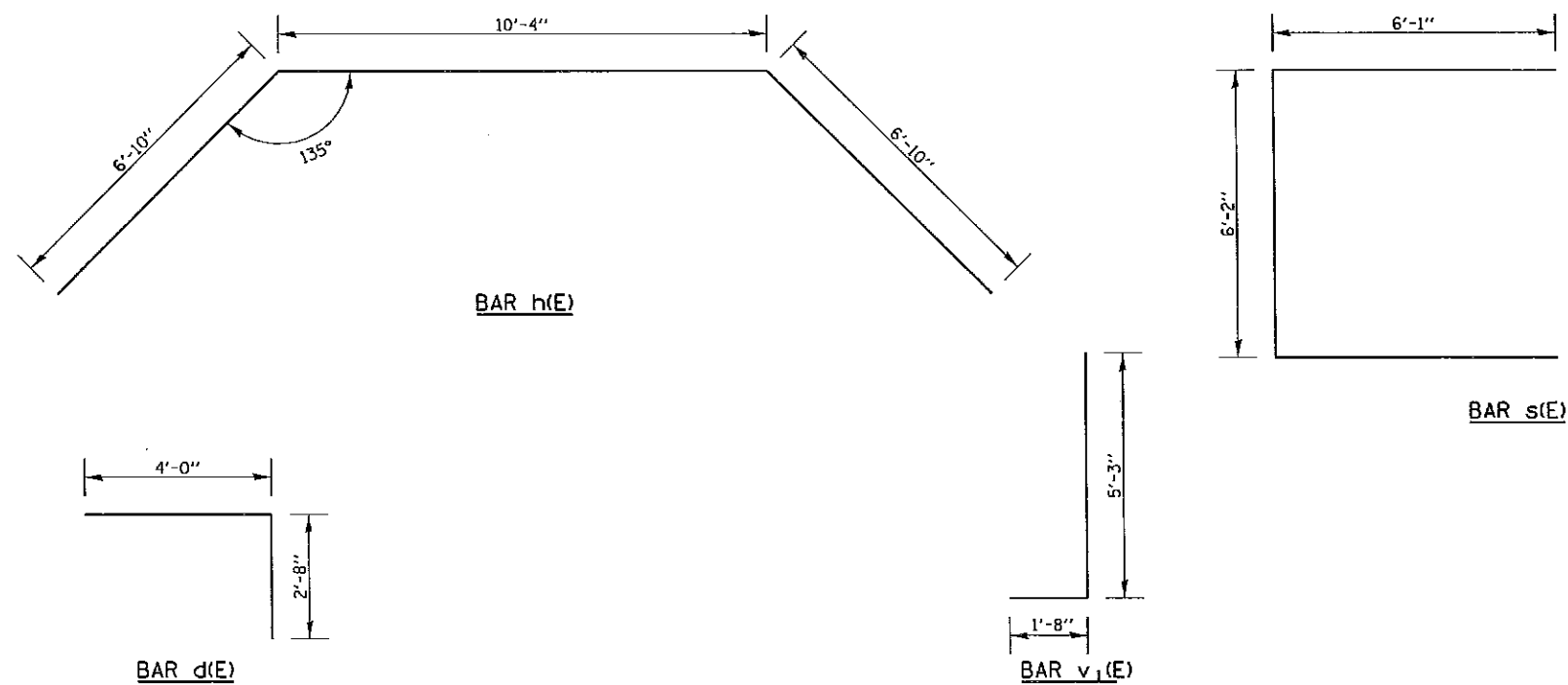
WORK THIS SHEET WITH
SHEET 10 OF 10

DESIGN STRESSES

$f_y = 60,000 \text{ psi}$
 $f'_c = 3,500 \text{ psi}$



HALF SIDE ELEVATION



BILL OF MATERIAL (BOTH APRONS)

Bar	No.	Size	Length	Shape	
b(E)	20	#4	11'-11"	—	
d(E)	28	#4	6'-8"	—	
h(E)	2	#4	24'-0"	—	
h1(E)	16	#4	7'-2"	—	
s(E)	8	#4	18'-4"	—	
v1(E)	28	#4	6'-11"	—	
CONCRETE BOX CULVERTS				CU. YD.	11.1
REINFORCEMENT BARS, EPOXY COATED.				Pound	620

REINFORCEMENT BARS DESIGNATED (E) SHALL BE EPOXY COATED.

REINFORCEMENT BARS SHALL CONFORM TO THE REQUIREMENTS OF ASTM A 706 GRADE 60.

EXPOSED EDGES SHALL BE BEVELED $\frac{3}{4}$ ".