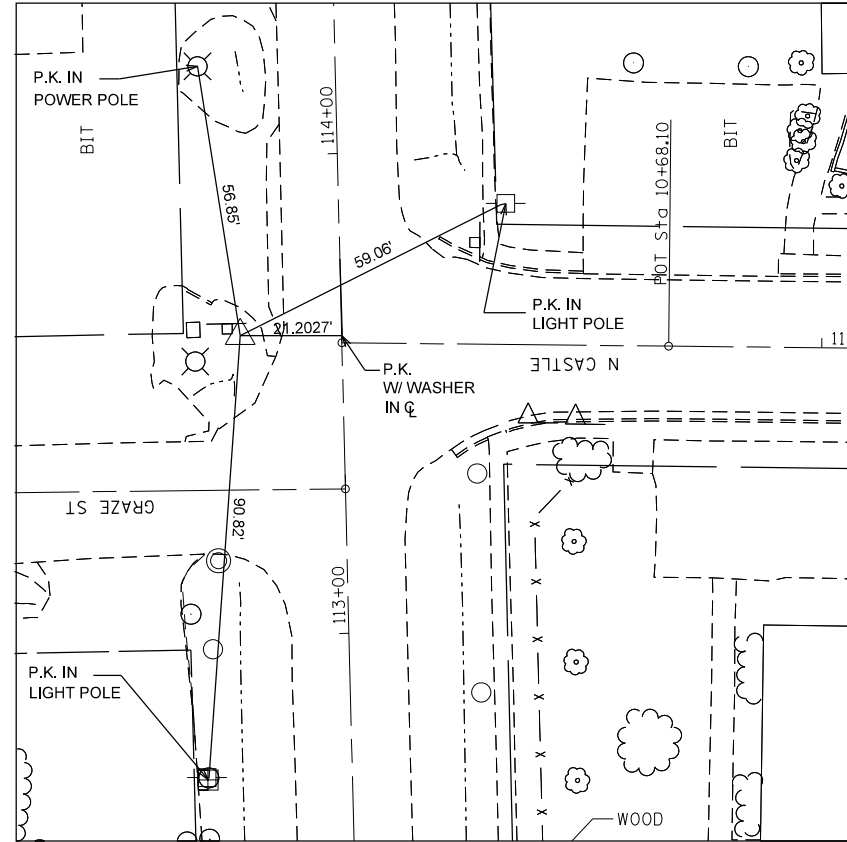
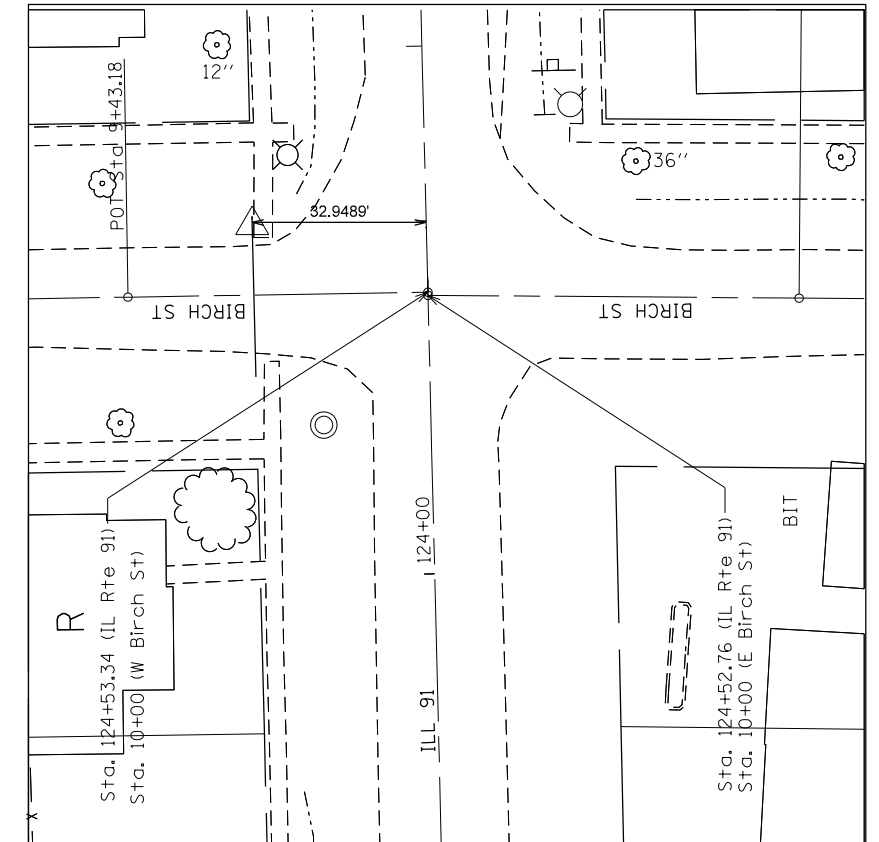


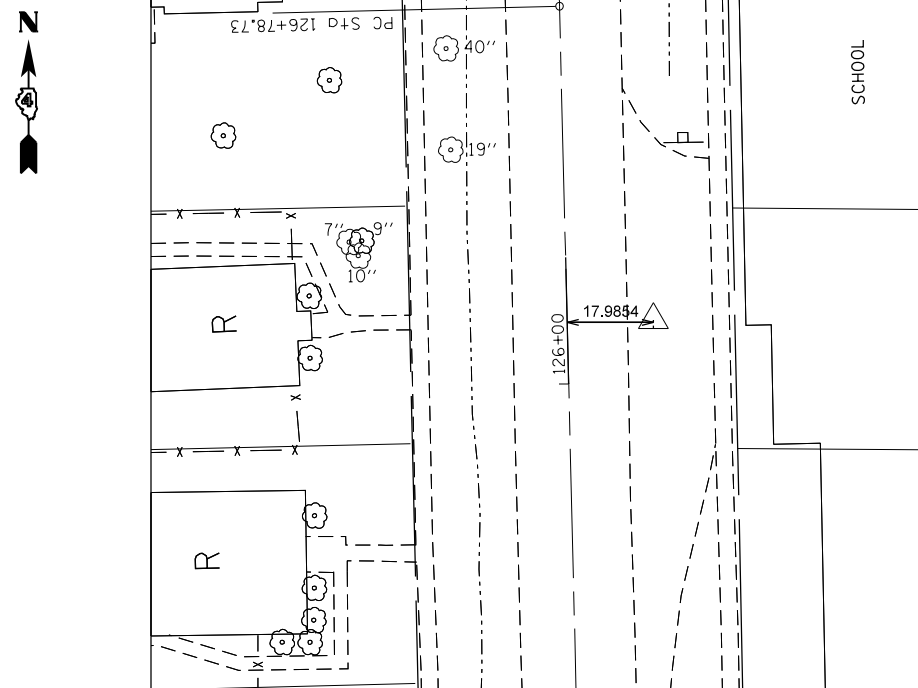
CONTROL POINT #9620
 240.54FT S. OF STA. 97+09.70, 32.94FT E. OF CENTER LINE
 X= 2431903.2727, Y= 1525325.4448



CONTROL POINT #9621
 STA. 113+62.01, 21.2027 LT
 X= 2431827.4160, Y= 1527217.4410



CONTROL POINT #100
 STA. 124+66.88, 32.9489 LT
 X= 2431788.8800, Y= 1528321.7020



CONTROL POINT #9640
 STA. 126+12.89, 17.9854 RT
 X= 2431836.2586, Y= 1528468.8991

FILE NAME = sht-benchmark.dgn	USER NAME = BOYKINAL	DESIGNED -	REVISED -
Default	PLOT SCALE = 100.0000' / in.	DRAWN -	REVISED -
	PLOT DATE = 2/07/2013	CHECKED -	REVISED -
		DATE -	REVISED -

**STATE OF ILLINOIS
 DEPARTMENT OF TRANSPORTATION**

**FAS 1380 (IL RTE 91)
 CONTROL POINTS**

SCALE: SHEET OF SHEETS STA. TO STA.

F.A.S. RTE.	SECTION	COUNTY	TOTAL SHEETS	SHEET NO.
1380	7W-1, RS-3	Peoria	617	65
CONTRACT NO. 88792				
ILLINOIS FED. AID PROJECT				