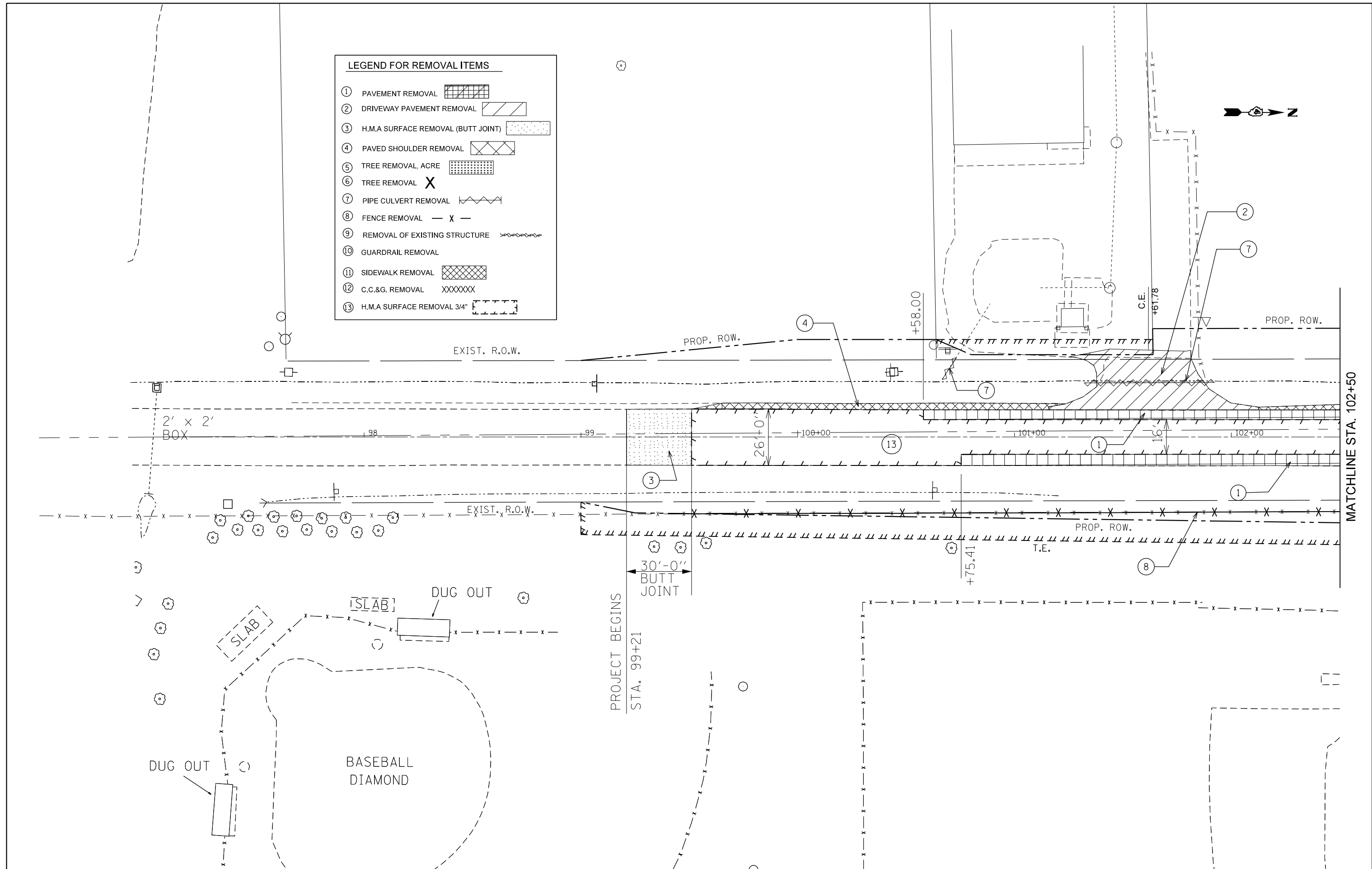


**LEGEND FOR REMOVAL ITEMS**

①	PAVEMENT REMOVAL	
②	DRIVEWAY PAVEMENT REMOVAL	
③	H.M.A SURFACE REMOVAL (BUTT JOINT)	
④	PAVED SHOULDER REMOVAL	
⑤	TREE REMOVAL, ACRE	
⑥	TREE REMOVAL	
⑦	PIPE CULVERT REMOVAL	
⑧	FENCE REMOVAL	
⑨	REMOVAL OF EXISTING STRUCTURE	
⑩	GUARDRAIL REMOVAL	
⑪	SIDEWALK REMOVAL	
⑫	C.C.&G. REMOVAL	
⑬	H.M.A SURFACE REMOVAL 3/4"	



MATCHLINE STA. 102+50

FILE NAME =	USER NAME = crespole	DESIGNED -	REVISED -
ct:\pw\work\p\idot\crespole\d0330150\048792-sht-removall.dgn		DRAWN -	REVISED -
PLOT SCALE = 40.0000' / in.		CHECKED -	REVISED -
PLOT DATE = 8/15/2013		DATE -	REVISED -

**STATE OF ILLINOIS  
DEPARTMENT OF TRANSPORTATION**

**IL RTE 91  
REMOVAL PLANS**

SCALE:      SHEET NO.    OF    SHEETS    STA.      TO STA.

F.A.S. RTE.	SECTION	COUNTY	TOTAL SHEETS	SHEET NO.
1380	7W-1,RS-3	Peoria	617	66
CONTRACT NO. 88792			ILLINOIS FED. AID PROJECT	