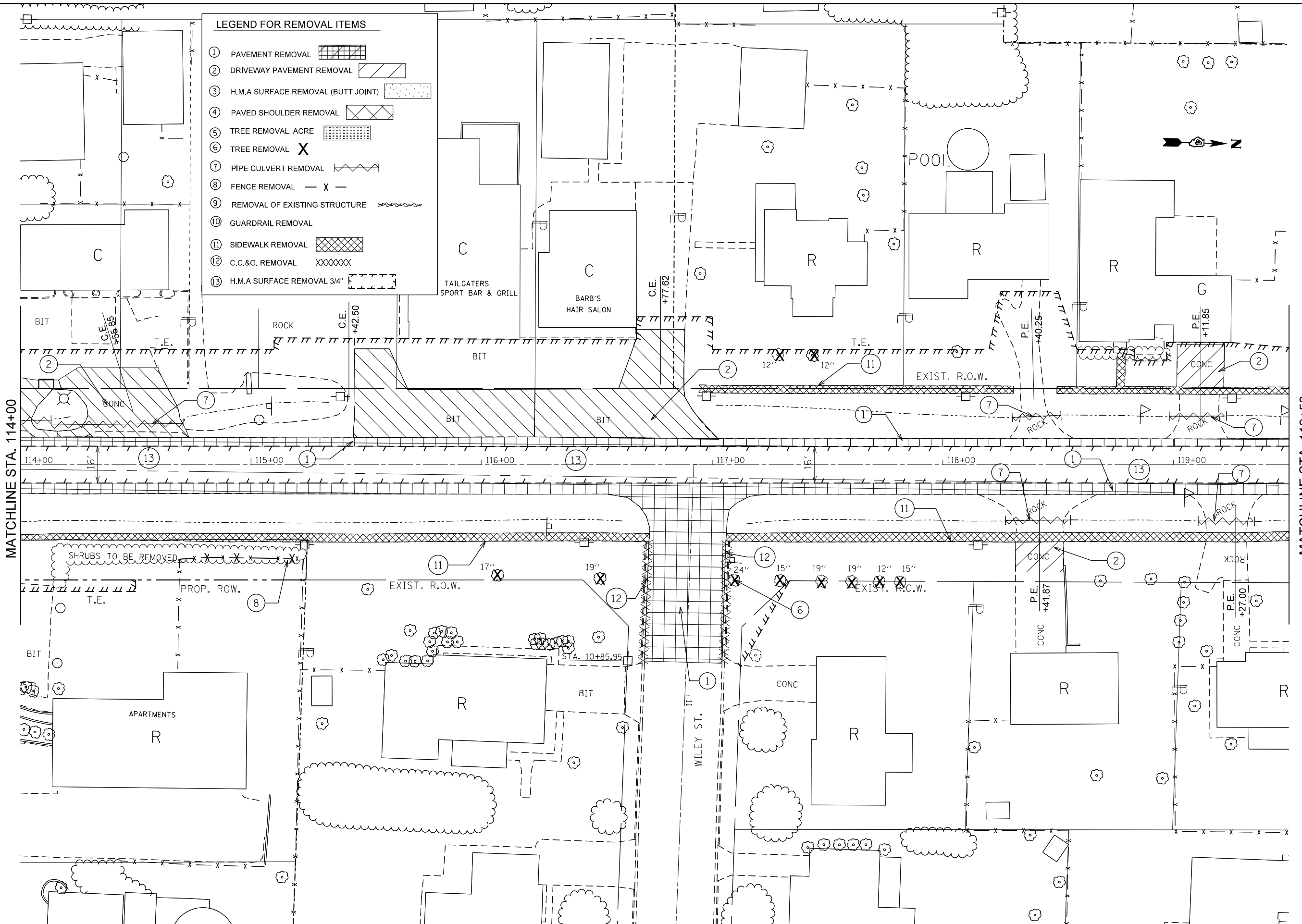


LEGEND FOR REMOVAL ITEMS

- ① PAVEMENT REMOVAL [diagonal hatching]
- ② DRIVEWAY PAVEMENT REMOVAL [diagonal hatching]
- ③ H.M.A SURFACE REMOVAL (BUTT JOINT) [stippled pattern]
- ④ PAVED SHOULDER REMOVAL [cross-hatching]
- ⑤ TREE REMOVAL, ACRE [grid pattern]
- ⑥ TREE REMOVAL [X symbol]
- ⑦ PIPE CULVERT REMOVAL [zigzag line]
- ⑧ FENCE REMOVAL [dashed line with X]
- ⑨ REMOVAL OF EXISTING STRUCTURE [dotted pattern]
- ⑩ GUARDRAIL REMOVAL [dashed line]
- ⑪ SIDEWALK REMOVAL [cross-hatching]
- ⑫ C.C.&G. REMOVAL [XXXXXX pattern]
- ⑬ H.M.A SURFACE REMOVAL 3/4" [stippled pattern]



MATCHLINE STA. 114+00

MATCHLINE STA. 119+50

FILE NAME =	USER NAME = crespole	DESIGNED -	REVISED -
et:\pw\work\p\dot\crespole\d0330150\048792-sht-removal1.dgn		DRAWN -	REVISED -
	PLOT SCALE = 40.0000' / in.	CHECKED -	REVISED -
	PLOT DATE = 8/15/2013	DATE -	REVISED -

**STATE OF ILLINOIS
DEPARTMENT OF TRANSPORTATION**

**IL RTE 91
REMOVAL PLANS**

SCALE: SHEET NO. OF SHEETS STA. TO STA.

F.A.S. RTE.	SECTION	COUNTY	TOTAL SHEETS	SHEET NO.
1380	7W-1,RS-3	Peoria	617	69
CONTRACT NO. 88792				
ILLINOIS FED. AID PROJECT				