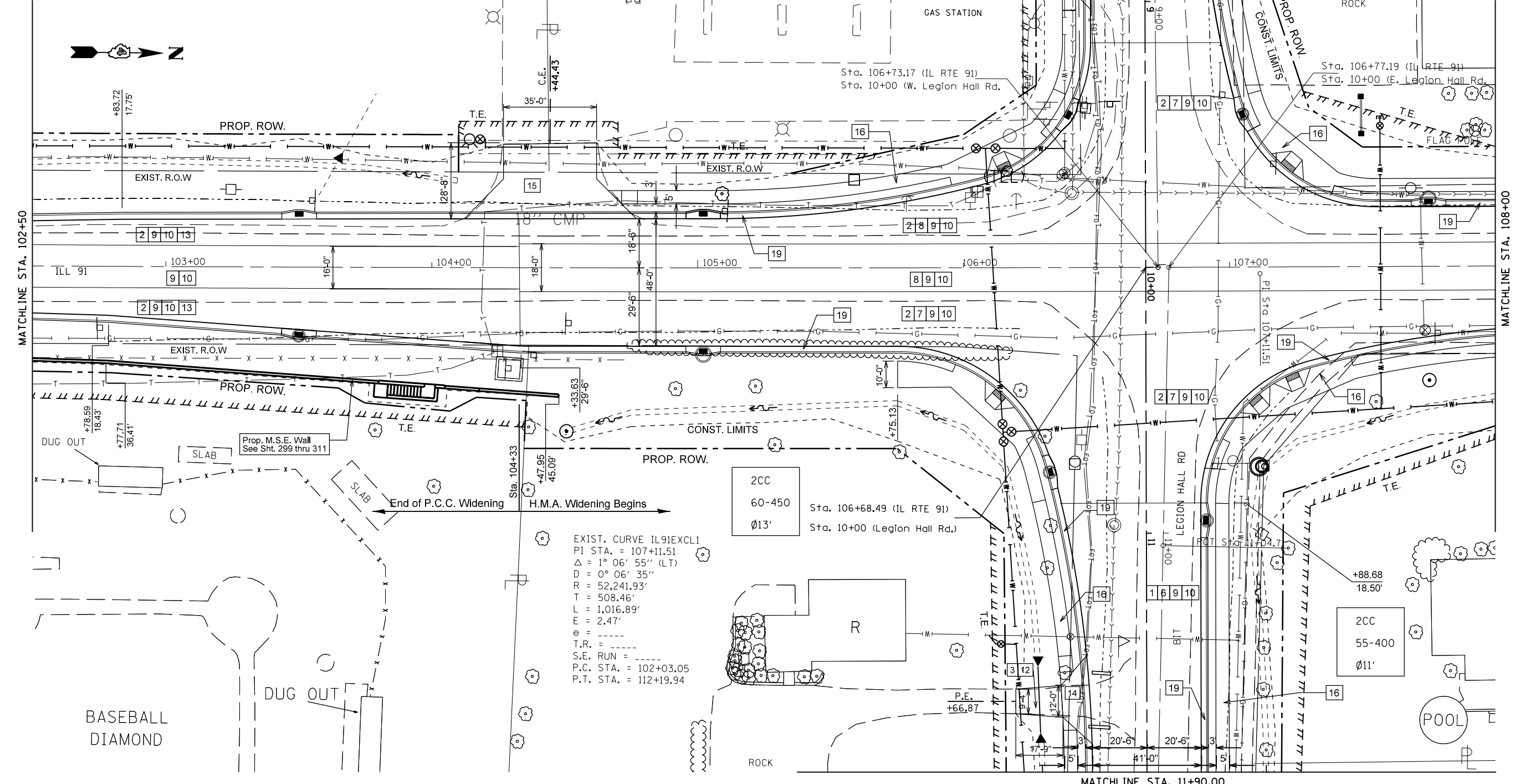


LEGEND	
1	AGGREGATE SUBGRADE IMPROVEMENT, 4"
2	AGGREGATE SUBGRADE IMPROVEMENT, 12"
3	AGGREGATE BASE COURSE, TYPE B, 8"
4	AGGREGATE SHOULDER, TYPE B, 6"
5	H.M.A. BASE COURSE, 6"
6	H.M.A. BASE COURSE, 7 1/2"
7	H.M.A. BASE COURSE, 10"
8	POLY. H.M.A. BINDER COURSE, IL 19.0, N 50
9	POLY. LEVELING BINDER (MM), IL 4.75, N50, 3/4"
10	POLY. H.M.A. SURFACE COURSE MIX "E", N50, 2"
11	INCIDENTAL H.M.A. SURFACING, 1 1/2"
12	INCIDENTAL H.M.A. SURFACING, 3"
13	P.C.C. BASE COURSE 10"
14	P.C.C. DRIVEWAY PAVEMENT, 6"
15	P.C.C. DRIVEWAY PAVEMENT, 8"
16	P.C.C. SIDEWALK 4"
17	P.C.C. SIDEWALK 4" (SPECIAL)
18	CLASS SI CONCRETE (OUTLET)
19	COMBINATION CONCRETE CURB & GUTTER, TYPE B-6.24
20	H.M.A. SHOULDERS 8"



FILE NAME =	USER NAME = crespole	DESIGNED -	REVISED -	<b>STATE OF ILLINOIS DEPARTMENT OF TRANSPORTATION</b>	<b>IL RTE 91 PROPOSED PLANS</b>				F.A.S. RTE. = 1380	SECTION = 7W-1,RS-3	COUNTY = Peoria	TOTAL SHEETS = 617	SHEET NO. = 82
c:\pw\work\p\midot\crespole\d0330150\0488792-shr-proposed.dgn		DRAWN -	REVISED -		SCALE:	SHEET NO.	OF SHEETS	STA.	TO STA.	CONTRACT NO. 88792			
PLOT SCALE = 40.0000' / in.		CHECKED -	REVISED -							ILLINOIS FED. AID PROJECT			
PLOT DATE = 8/16/2013		DATE -	REVISED -										