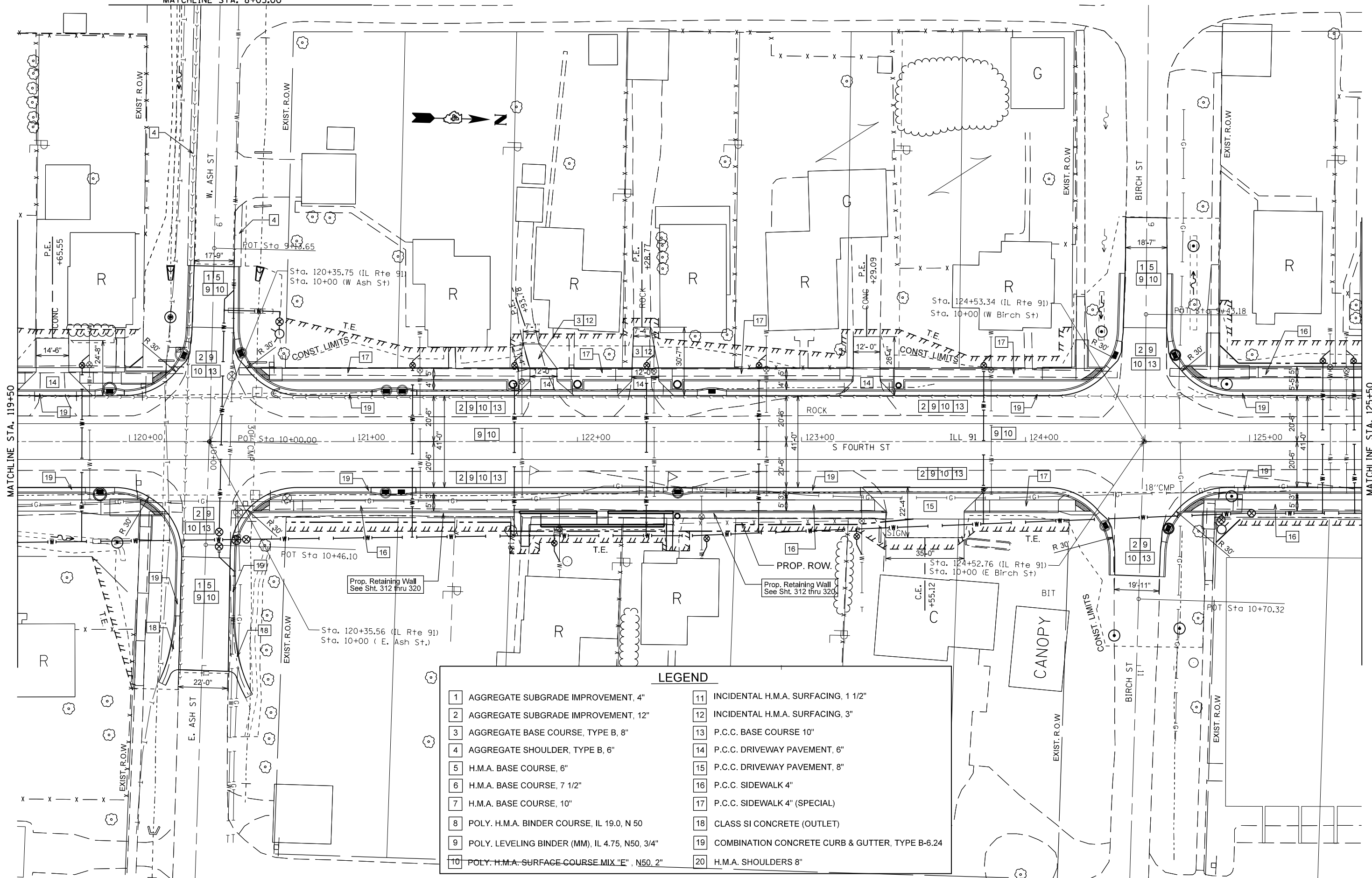


MATCHLINE STA. 8+05.00



LEGEND

1 AGGREGATE SUBGRADE IMPROVEMENT, 4"	11 INCIDENTAL H.M.A. SURFACING, 1 1/2"
2 AGGREGATE SUBGRADE IMPROVEMENT, 12"	12 INCIDENTAL H.M.A. SURFACING, 3"
3 AGGREGATE BASE COURSE, TYPE B, 8"	13 P.C.C. BASE COURSE 10"
4 AGGREGATE SHOULDER, TYPE B, 6"	14 P.C.C. DRIVEWAY PAVEMENT, 6"
5 H.M.A. BASE COURSE, 6"	15 P.C.C. DRIVEWAY PAVEMENT, 8"
6 H.M.A. BASE COURSE, 7 1/2"	16 P.C.C. SIDEWALK 4"
7 H.M.A. BASE COURSE, 10"	17 P.C.C. SIDEWALK 4" (SPECIAL)
8 POLY. H.M.A. BINDER COURSE, IL 19.0, N 50	18 CLASS SI CONCRETE (OUTLET)
9 POLY. LEVELING BINDER (MM), IL 4.75, N50, 3/4"	19 COMBINATION CONCRETE CURB & GUTTER, TYPE B-6.24
10 POLY. H.M.A. SURFACE COURSE MIX "E", N50, 2"	20 H.M.A. SHOULDERS 8"

FILE NAME =
 USER NAME = crespole
 DRAWN -
 CHECKED -
 DATE - 8/16/2013

DESIGNED -
 DRAWN -
 CHECKED -
 DATE -

REVISED -
 REVISED -
 REVISED -
 REVISED -

**STATE OF ILLINOIS
 DEPARTMENT OF TRANSPORTATION**

**IL RTE 91
 PROPOSED PLANS**

SCALE: SHEET NO. OF SHEETS STA. TO STA.

F.A.S. RTE.	SECTION	COUNTY	TOTAL SHEETS	SHEET NO.
1380	7W-1,RS-3	Peoria	617	85
CONTRACT NO. 88792				
ILLINOIS FED. AID PROJECT				