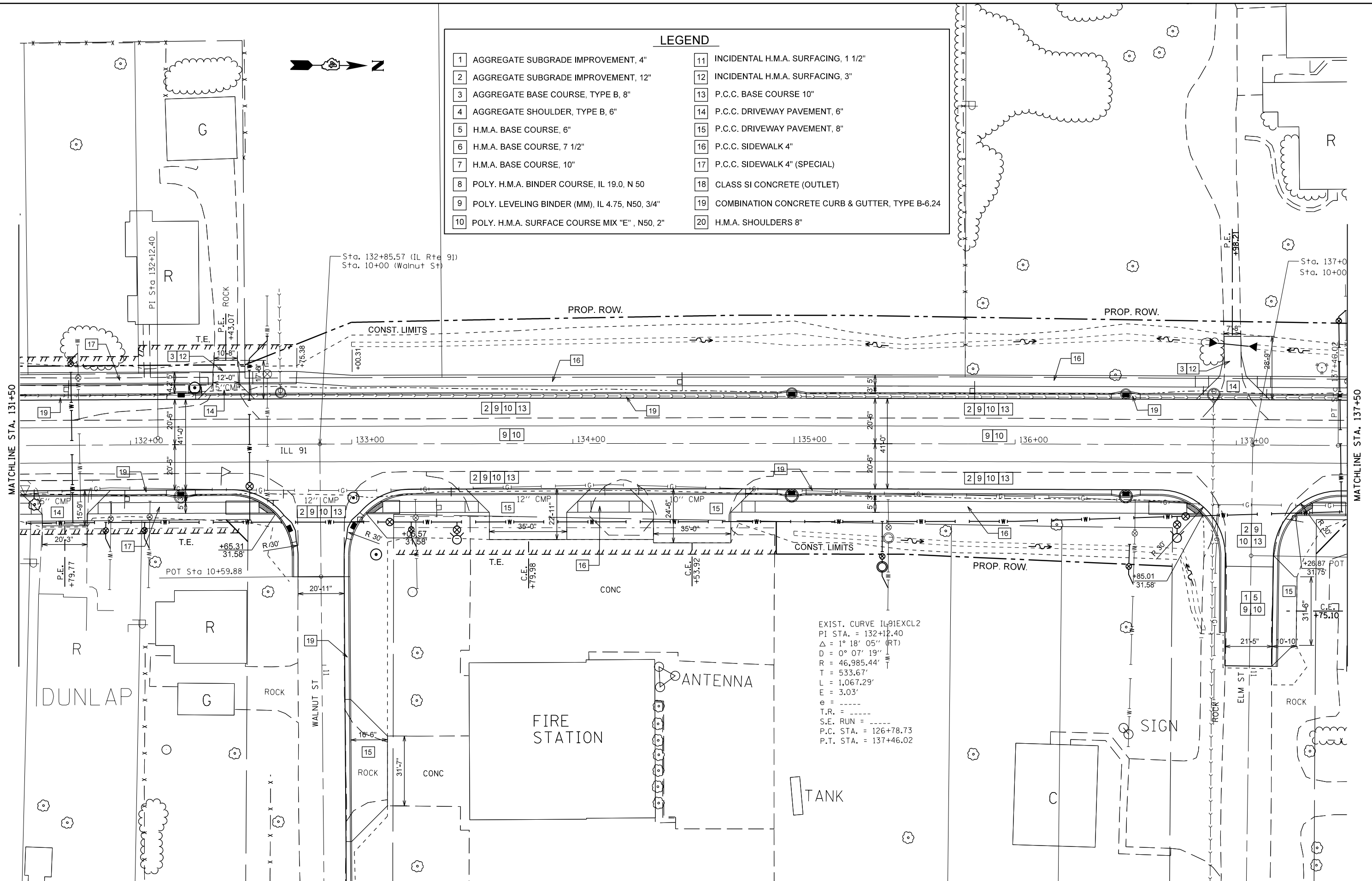


LEGEND

- | | | | |
|----|--|----|---|
| 1 | AGGREGATE SUBGRADE IMPROVEMENT, 4" | 11 | INCIDENTAL H.M.A. SURFACING, 1 1/2" |
| 2 | AGGREGATE SUBGRADE IMPROVEMENT, 12" | 12 | INCIDENTAL H.M.A. SURFACING, 3" |
| 3 | AGGREGATE BASE COURSE, TYPE B, 8" | 13 | P.C.C. BASE COURSE 10" |
| 4 | AGGREGATE SHOULDER, TYPE B, 6" | 14 | P.C.C. DRIVEWAY PAVEMENT, 6" |
| 5 | H.M.A. BASE COURSE, 6" | 15 | P.C.C. DRIVEWAY PAVEMENT, 8" |
| 6 | H.M.A. BASE COURSE, 7 1/2" | 16 | P.C.C. SIDEWALK 4" |
| 7 | H.M.A. BASE COURSE, 10" | 17 | P.C.C. SIDEWALK 4" (SPECIAL) |
| 8 | POLY. H.M.A. BINDER COURSE, IL 19.0, N 50 | 18 | CLASS SI CONCRETE (OUTLET) |
| 9 | POLY. LEVELING BINDER (MM), IL 4.75, N50, 3/4" | 19 | COMBINATION CONCRETE CURB & GUTTER, TYPE B-6.24 |
| 10 | POLY. H.M.A. SURFACE COURSE MIX "E", N50, 2" | 20 | H.M.A. SHOULDERS 8" |



FILE NAME =	USER NAME = crespole	DESIGNED -	REVISED -
ei:\pw\work\p\dot\crespole\d0330150\0488792-sh\proposed.dgn		DRAWN -	REVISED -
PLOT SCALE = 40.0000' / in.		CHECKED -	REVISED -
PLOT DATE = 8/16/2013		DATE -	REVISED -

**STATE OF ILLINOIS
DEPARTMENT OF TRANSPORTATION**

IL RTE 91 PROPOSED PLANS			
SCALE:	SHEET NO.	OF SHEETS	STA. TO STA.

F.A.S. RTE.	SECTION	COUNTY	TOTAL SHEETS	SHEET NO.
1380	7W-1,RS-3	Peoria	617	87
CONTRACT NO. 88792				
ILLINOIS FED. AID PROJECT				