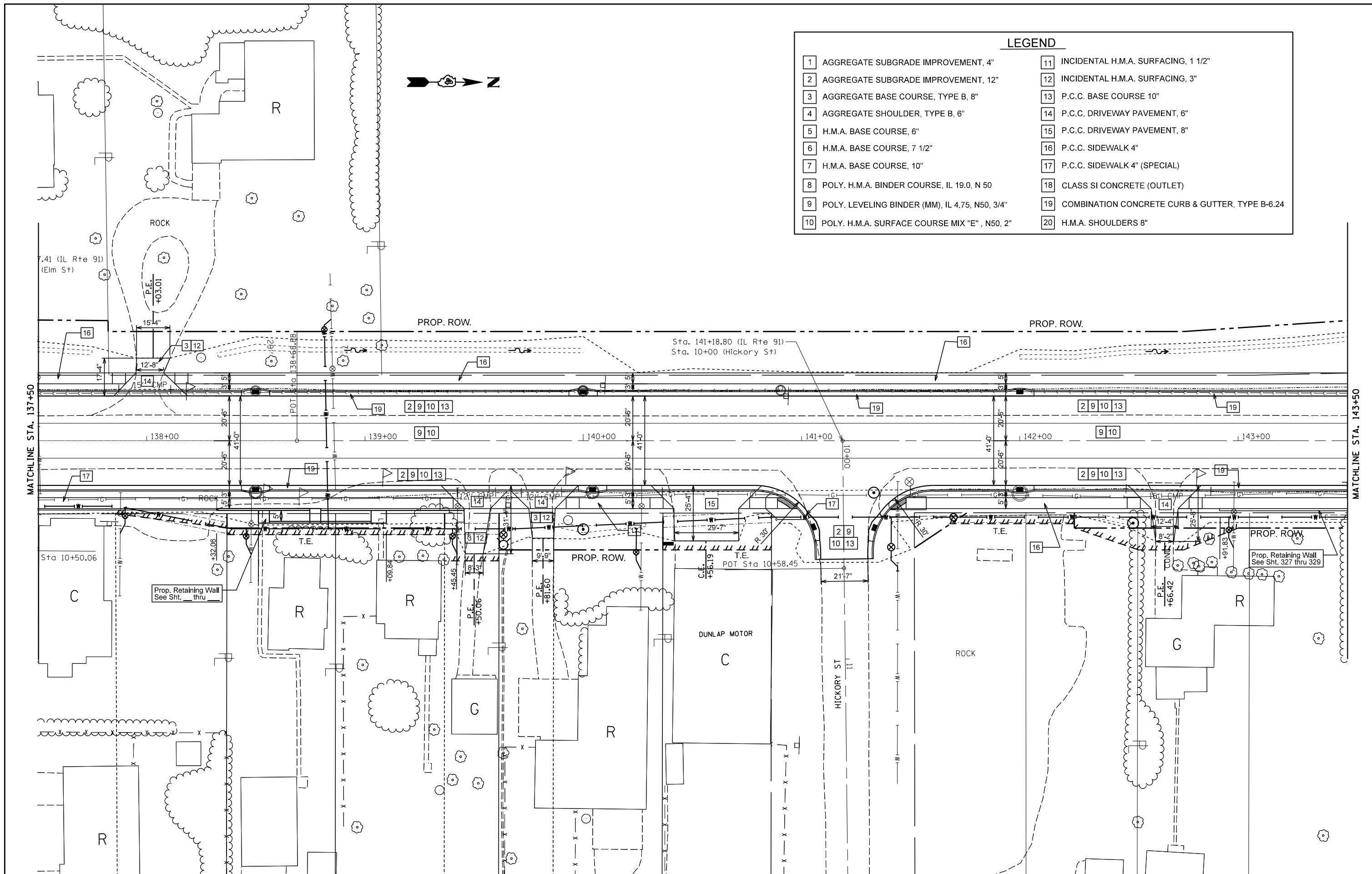


LEGEND	
1	AGGREGATE SUBGRADE IMPROVEMENT, 4"
2	AGGREGATE SUBGRADE IMPROVEMENT, 12"
3	AGGREGATE BASE COURSE, TYPE B, 8"
4	AGGREGATE SHOULDER, TYPE B, 6"
5	H.M.A. BASE COURSE, 6"
6	H.M.A. BASE COURSE, 7 1/2"
7	H.M.A. BASE COURSE, 10"
8	POLY. H.M.A. BINDER COURSE, IL 19.0, N 50
9	POLY. LEVELING BINDER (MM), IL 4.75, N50, 3/4"
10	POLY. H.M.A. SURFACE COURSE MIX "E", N50, 2"
11	INCIDENTAL H.M.A. SURFACING, 1 1/2"
12	INCIDENTAL H.M.A. SURFACING, 3"
13	P.C.C. BASE COURSE 10"
14	P.C.C. DRIVEWAY PAVEMENT, 6"
15	P.C.C. DRIVEWAY PAVEMENT, 8"
16	P.C.C. SIDEWALK 4"
17	P.C.C. SIDEWALK 4" (SPECIAL)
18	CLASS SI CONCRETE (OUTLET)
19	COMBINATION CONCRETE CURB & GUTTER, TYPE B-6.24
20	H.M.A. SHOULDERS 8"



FILE NAME =	USER NAME = lababidism	DESIGNED -	REVISED -	STATE OF ILLINOIS DEPARTMENT OF TRANSPORTATION	IL RTE 91 PROPOSED PLANS			F.A.S. RTE.	SECTION	COUNTY	TOTAL SHEETS	SHEET NO.
et:\pw\work\p\idot\lababidism\d0330150\488792-sht-proposed.dgn		DRAWN -	REVISED -		1380	7W-1,RS-3	Peoria	617	88			
PLOT SCALE = 40.0000' / in.		CHECKED -	REVISED -		CONTRACT NO. 88792							
PLOT DATE = 9/6/2013		DATE -	REVISED -		ILLINOIS FED. AID PROJECT							
				SCALE:	SHEET NO.	OF SHEETS	STA.	TO STA.				