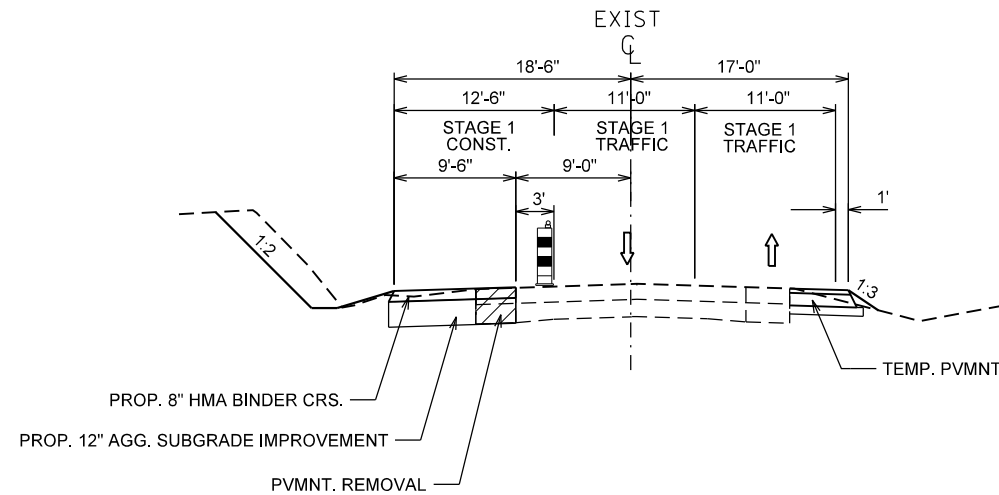
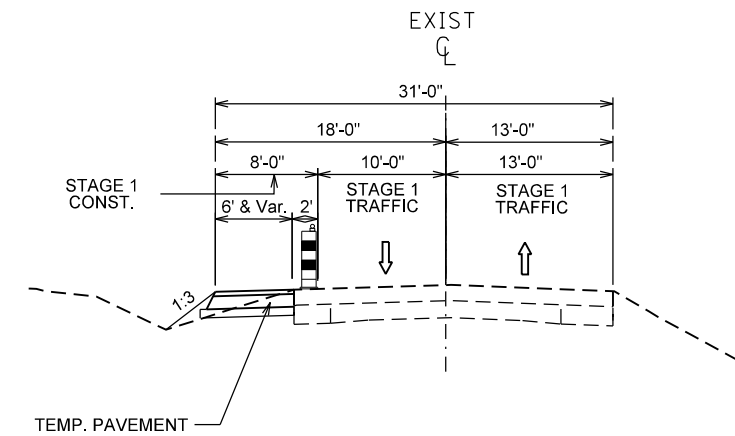


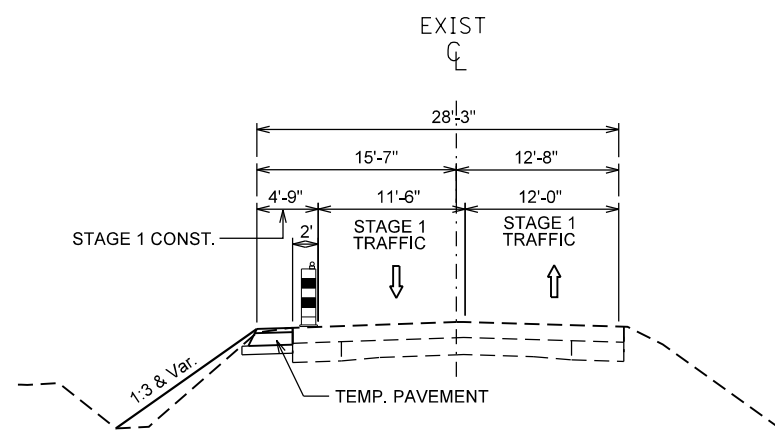
STA. 99+17 to 100+02.03



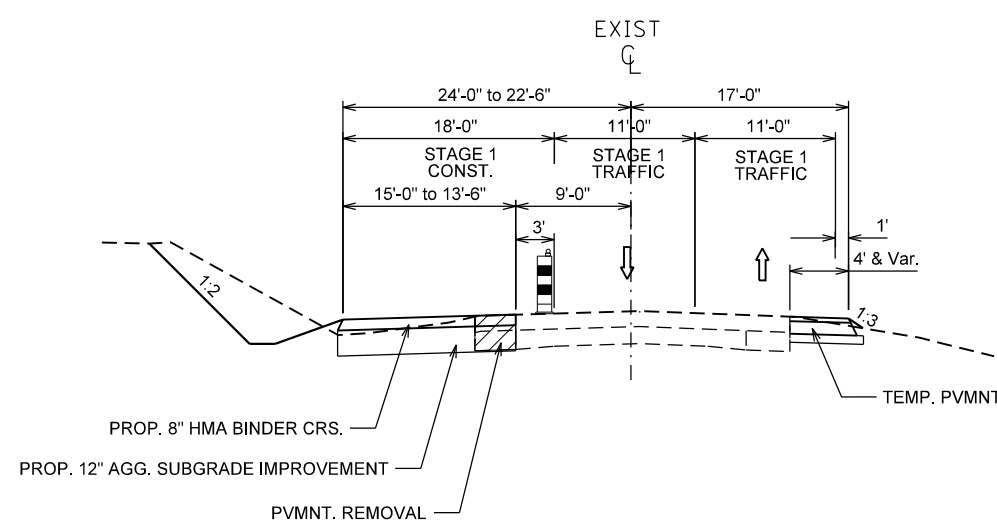
STA. 104+84.63 - 106+37.52



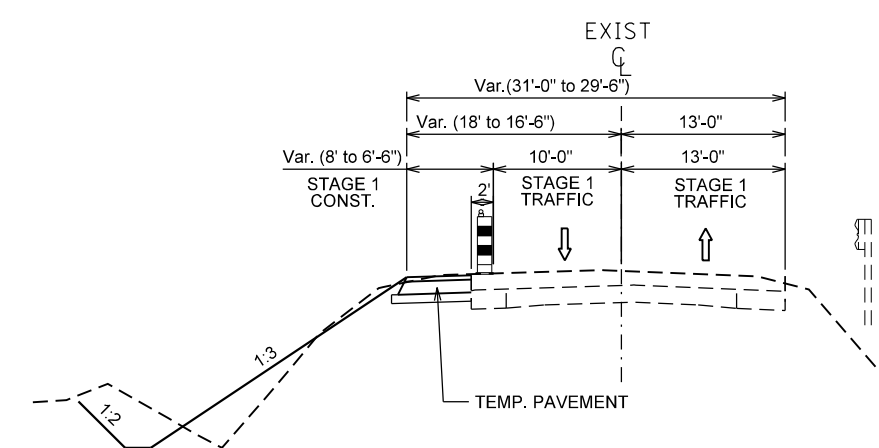
STA. 110+00.00- 145+88.96



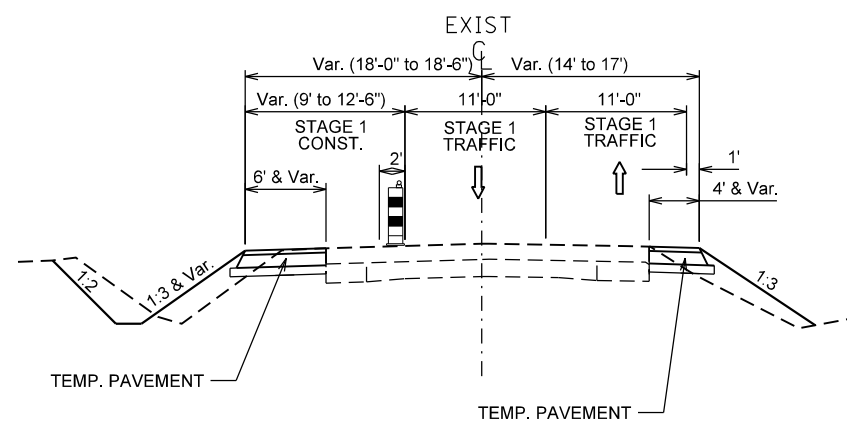
STA. 100+02.03- 103+72.17



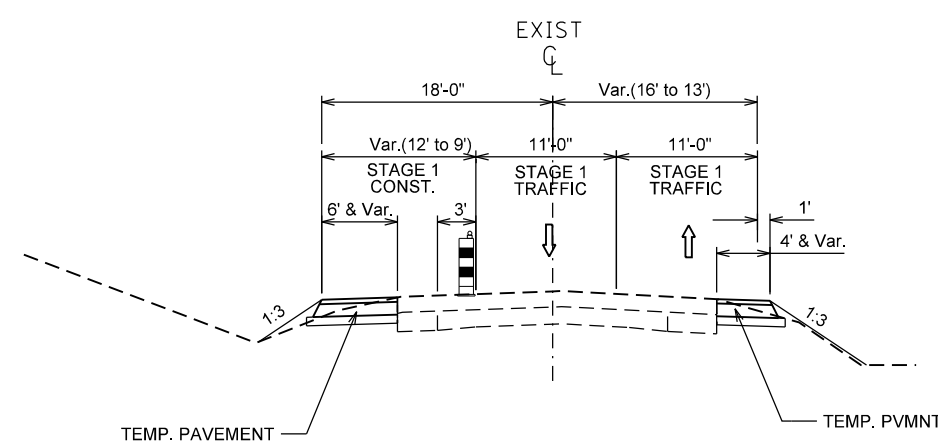
STA. 107+09.48 - 108+56.46



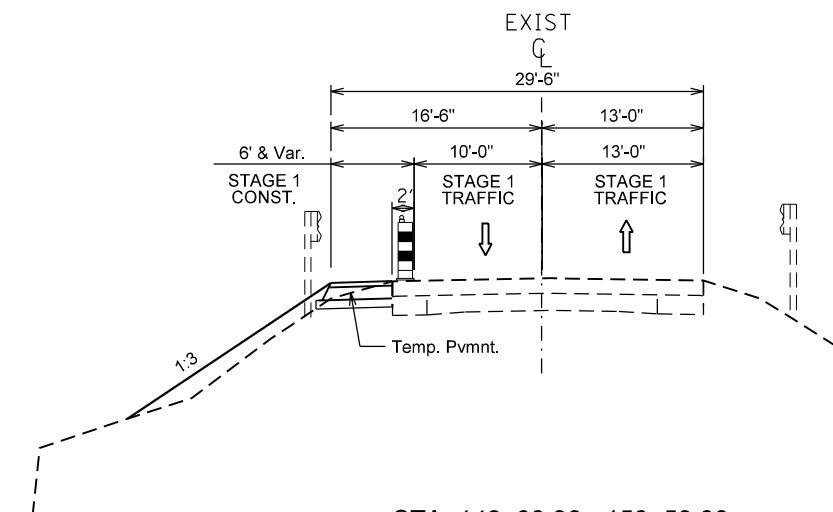
STA. 145+88.96 - 146+33.96



STA. 103+72.17- 104+84.63



STA. 108+56.46 - 110+00.00



STA. 146+33.96 - 150+59.38

FILE NAME =	USER NAME = crespole	DESIGNED -	REVISED -	STATE OF ILLINOIS DEPARTMENT OF TRANSPORTATION	IL 91 STAGE 1 TYPICAL SECTIONS	F.A.S. RTE.	SECTION	COUNTY	TOTAL SHEETS	SHEET NO.	
et:\pw\work\p\midot\crespole\d0348685\1048792-sht-stage typical.dgn		DRAWN -	REVISED -			1380	7W-1,RS-3	Peoria	617	114	
PLOT SCALE = 15.0000' / in.		CHECKED -	REVISED -			CONTRACT NO. 88792					
PLOT DATE = 8/15/2013		DATE -	REVISED -			ILLINOIS FED. AID PROJECT					
					SCALE:	SHEET	OF	SHEETS	STA.	TO	STA.