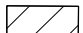
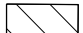



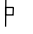



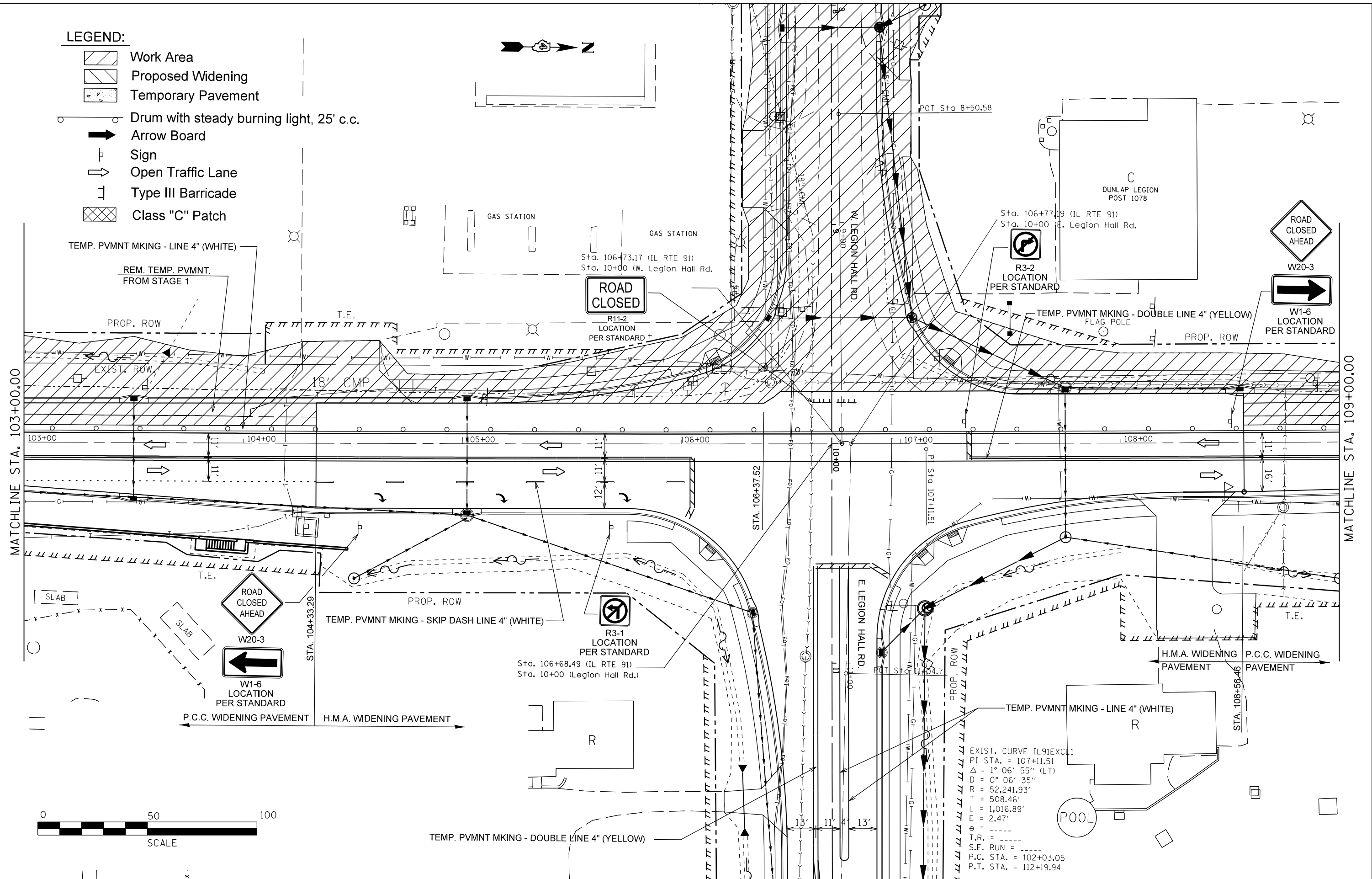


**LEGEND:**

-  Work Area
-  Proposed Widening
-  Temporary Pavement
-  Drum with steady burning light, 25' c.c.
-  Arrow Board
-  Sign
-  Open Traffic Lane
-  Type III Barricade
-  Class "C" Patch



FILE NAME =	USER NAME = crespole	DESIGNED -	REVISED -
et:\pw\work\p\midot\crespole\d0348685\1048792-SHT-STAGE3.DGN		DRAWN -	REVISED -
Default	PLOT SCALE = 40.0000' / in.	CHECKED -	REVISED -
	PLOT DATE = 8/15/2013	DATE -	REVISED -

**STATE OF ILLINOIS  
DEPARTMENT OF TRANSPORTATION**

**TRAFFIC CONTROL PLANS  
STAGE 3**

SCALE: SHEET OF SHEETS STA. TO STA.

F.A.S. RTE.	SECTION	COUNTY	TOTAL SHEETS	SHEET NO.
1380	7W-1,RS-3	Peoria	617	163
				CONTRACT NO. 88792
ILLINOIS FED. AID PROJECT				