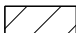
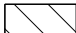




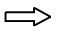


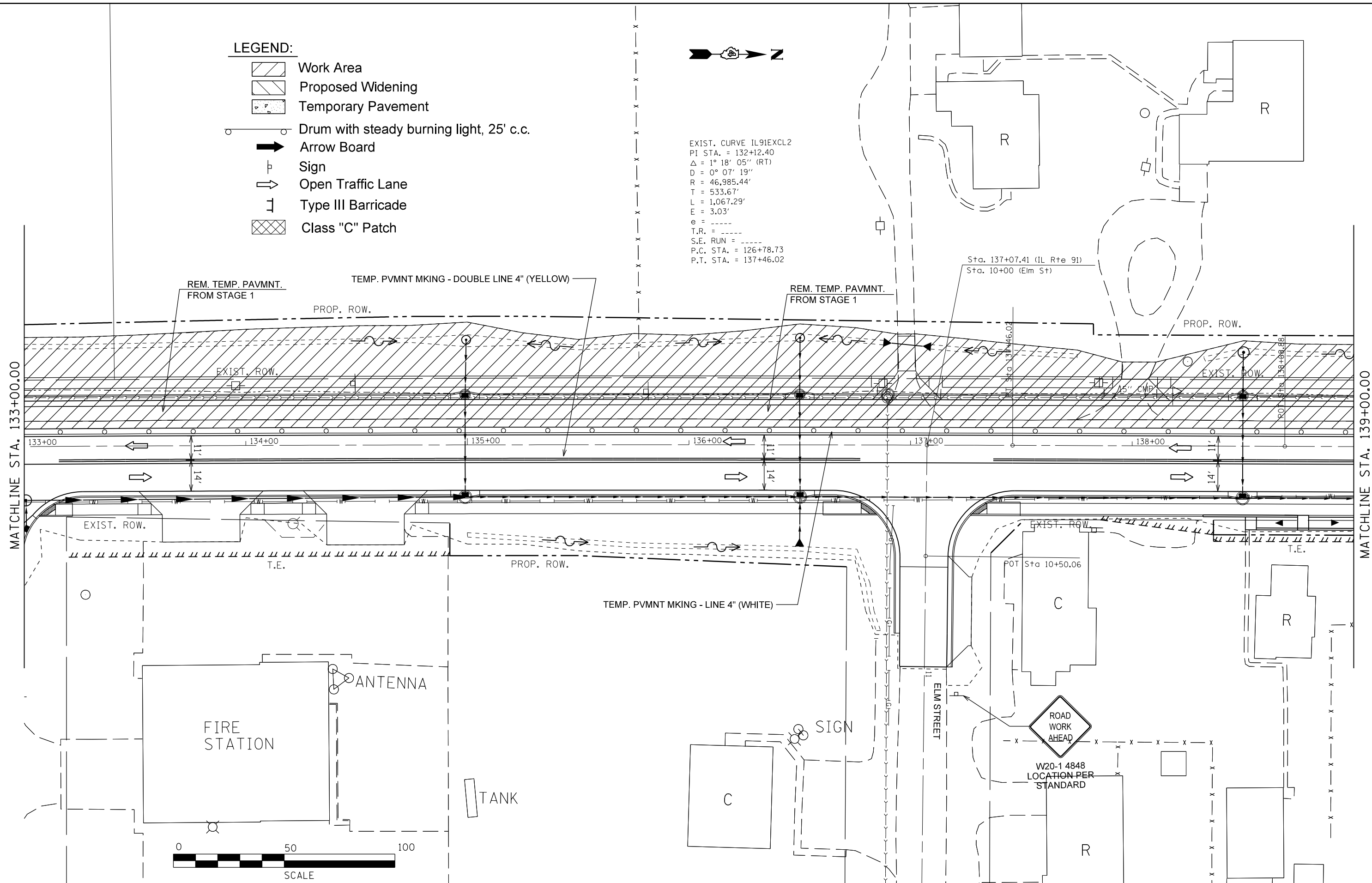


LEGEND:

-  Work Area
-  Proposed Widening
-  Temporary Pavement
-  Drum with steady burning light, 25' c.c.
-  Arrow Board
-  Sign
-  Open Traffic Lane
-  Type III Barricade
-  Class "C" Patch



EXIST. CURVE IL91EXCL2
 PI STA. = 132+12.40
 $\Delta = 1^\circ 18' 05''$ (RT)
 $D = 0^\circ 07' 19''$
 $R = 46,985.44'$
 $T = 533.67'$
 $L = 1,067.29'$
 $E = 3.03'$
 $e = \text{-----}$
 $T.R. = \text{-----}$
 $S.E. \text{ RUN} = \text{-----}$
 $P.C. \text{ STA.} = 126+78.73$
 $P.T. \text{ STA.} = 137+46.02$



FILE NAME =	USER NAME = crespole	DESIGNED -	REVISED -
c:\pwork\pwork\crespole\d0348685\d486792-SHT-STAGE3.DGN		DRAWN -	REVISED -
Default	PLOT SCALE = 40.0000' / in.	CHECKED -	REVISED -
	PLOT DATE = 8/15/2013	DATE -	REVISED -

**STATE OF ILLINOIS
 DEPARTMENT OF TRANSPORTATION**

**TRAFFIC CONTROL PLANS
 STAGE 3**

SCALE: SHEET OF SHEETS STA. TO STA.

F.A.S. RTÉ.	SECTION	COUNTY	TOTAL SHEETS	SHEET NO.
1380	7W-1,RS-3	Peoria	617	168
CONTRACT NO. 88792				
ILLINOIS FED. AID PROJECT				