



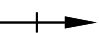
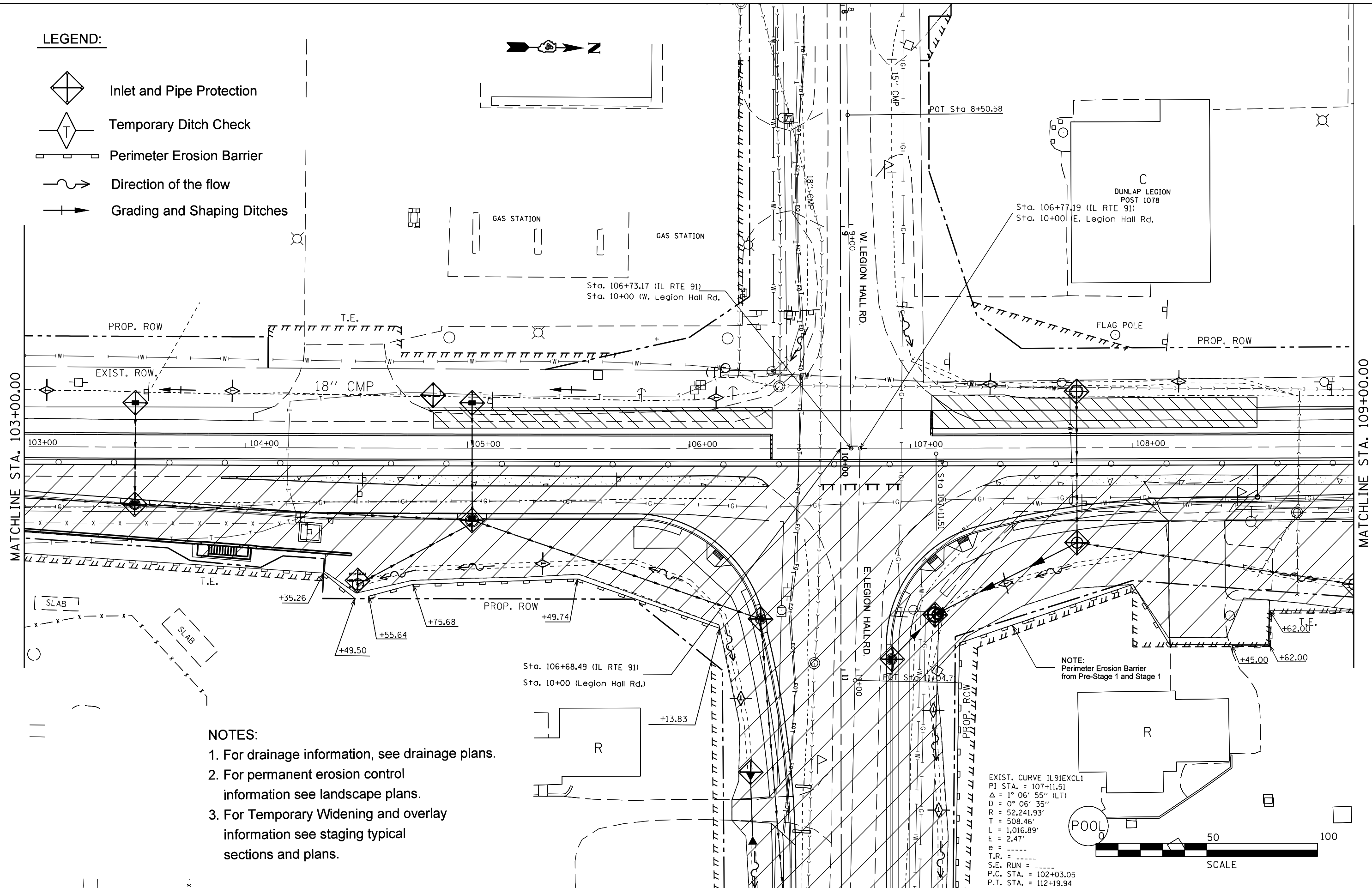


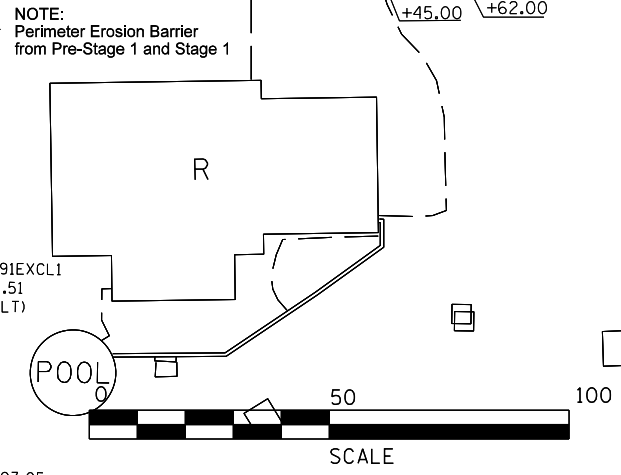
LEGEND:

-  Inlet and Pipe Protection
-  Temporary Ditch Check
-  Perimeter Erosion Barrier
-  Direction of the flow
-  Grading and Shaping Ditches



- NOTES:**
1. For drainage information, see drainage plans.
 2. For permanent erosion control information see landscape plans.
 3. For Temporary Widening and overlay information see staging typical sections and plans.

EXIST. CURVE IL91EXCL1
 PI STA. = 107+11.51
 $\Delta = 1^\circ 06' 55''$ (LT)
 $D = 0^\circ 06' 35''$
 $R = 52,241.93'$
 $T = 508.46'$
 $L = 1,016.89'$
 $E = 2.47'$
 $\theta = \dots$
 $T.R. = \dots$
 $S.E. RUN = \dots$
 $P.C. STA. = 102+03.05$
 $P.T. STA. = 112+19.94$



FILE NAME =	USER NAME = crespole	DESIGNED -	REVISED -
Default	Default	DRAWN -	REVISED -
		CHECKED -	REVISED -
		DATE -	REVISED -

**STATE OF ILLINOIS
 DEPARTMENT OF TRANSPORTATION**

**EROSION CONTROL PLANS
 STAGE 2**

F.A.S. RTE.	SECTION	COUNTY	TOTAL SHEETS	SHEET NO.
1380	7W-1,RS-3	Peoria	617	198
CONTRACT NO. 88792			ILLINOIS FED. AID PROJECT	

SCALE: SHEET OF SHEETS STA. TO STA.