
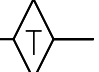
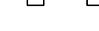

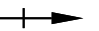
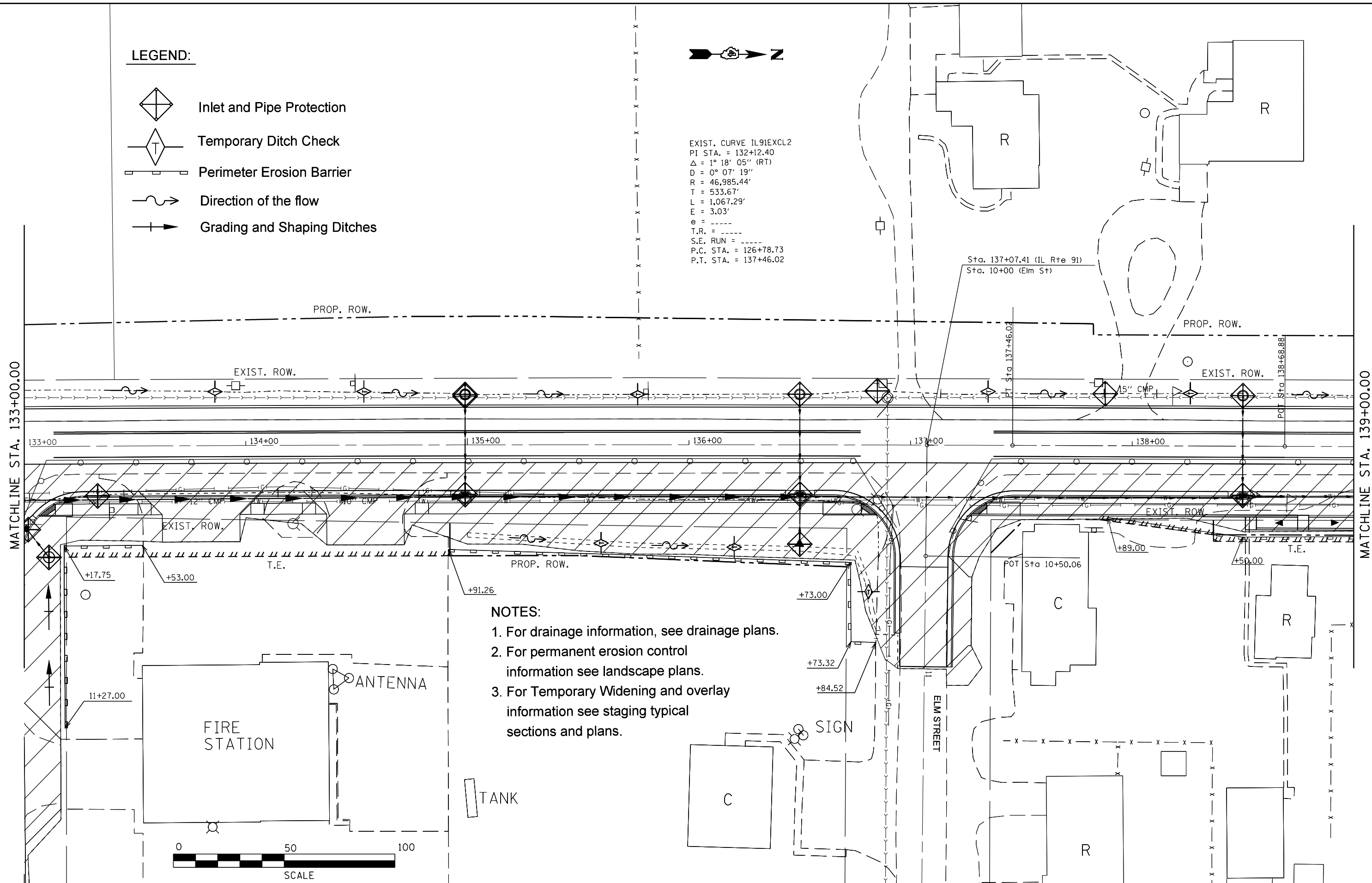


**LEGEND:**

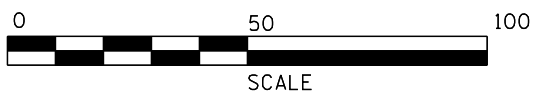
-  Inlet and Pipe Protection
-  Temporary Ditch Check
-  Perimeter Erosion Barrier
-  Direction of the flow
-  Grading and Shaping Ditches



EXIST. CURVE IL91EXCL2  
 PI STA. = 132+12.40  
 $\Delta = 1^\circ 18' 05''$  (RT)  
 $D = 0^\circ 07' 19''$   
 $R = 46,985.44'$   
 $T = 533.67'$   
 $L = 1,067.29'$   
 $E = 3.03'$   
 $e = \text{-----}$   
 $T.R. = \text{-----}$   
 $S.E. \text{ RUN} = \text{-----}$   
 $P.C. \text{ STA.} = 126+78.73$   
 $P.T. \text{ STA.} = 137+46.02$



- NOTES:**
1. For drainage information, see drainage plans.
  2. For permanent erosion control information see landscape plans.
  3. For Temporary Widening and overlay information see staging typical sections and plans.



FILE NAME =	USER NAME = crespole	DESIGNED -	REVISED -
Default	es:\pw\work\p\midot\crespole\10349547\EC	DRAWN -	REVISED -
	Sheets for the entire project for all stages.	CHECKED -	REVISED -
	PLOT SCALE = 40.0000' / in.	DATE -	REVISED -
	PLOT DATE = 8/15/2013		

**STATE OF ILLINOIS  
 DEPARTMENT OF TRANSPORTATION**

**EROSION CONTROL PLANS  
 STAGE 2**

SCALE: SHEET OF SHEETS STA. TO STA.

F.A.S. RTE.	SECTION	COUNTY	TOTAL SHEETS	SHEET NO.
1380	7W-1,RS-3	Peoria	617	203
CONTRACT NO. 88792			ILLINOIS FED. AID PROJECT	