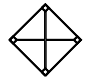
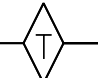
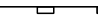

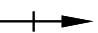
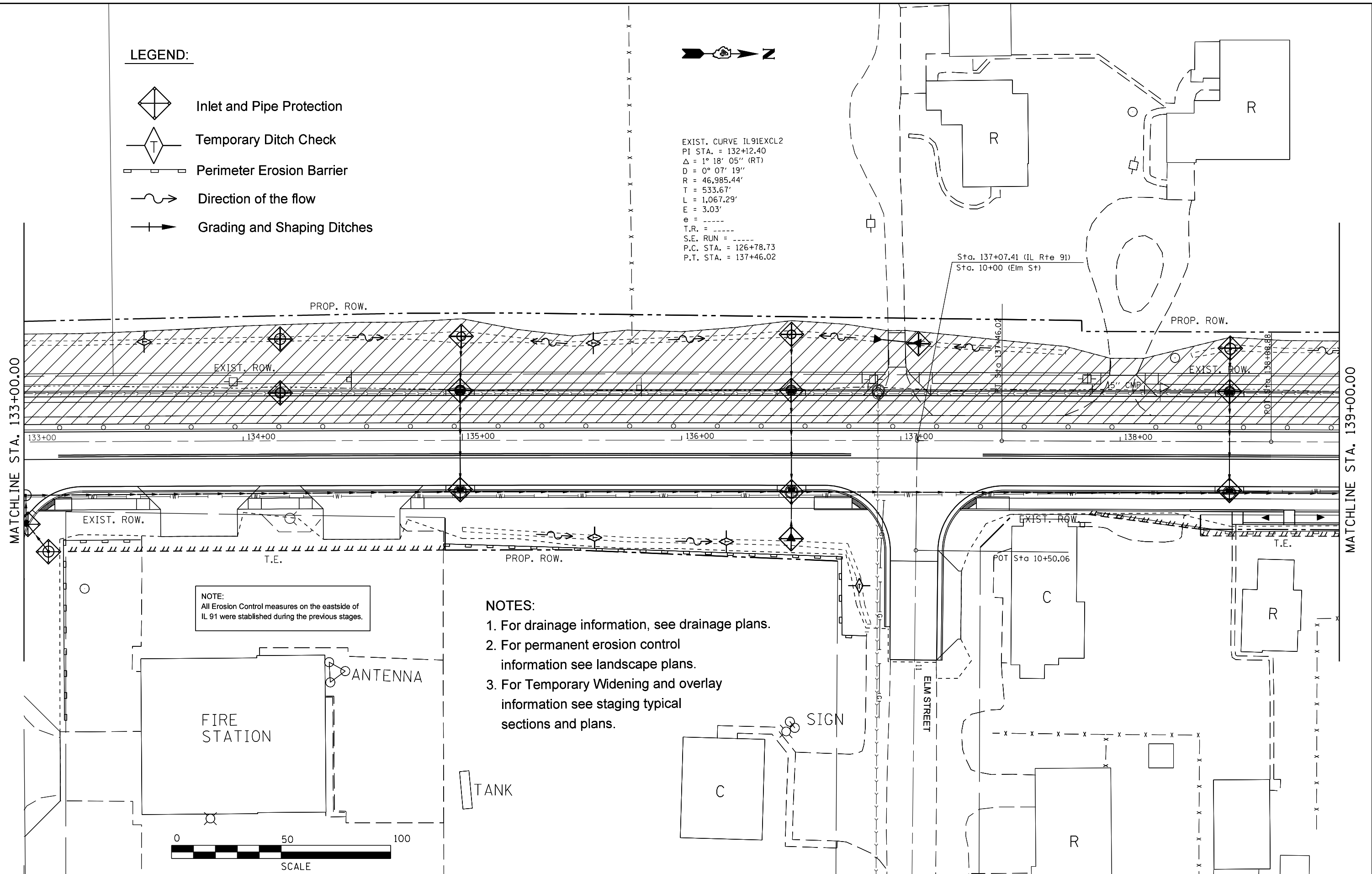


LEGEND:

-  Inlet and Pipe Protection
-  Temporary Ditch Check
-  Perimeter Erosion Barrier
-  Direction of the flow
-  Grading and Shaping Ditches

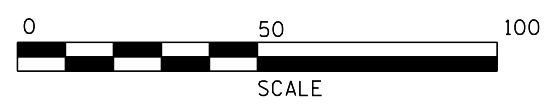


EXIST. CURVE IL91EXCL2
 PI STA. = 132+12.40
 Δ = 1° 18' 05" (RT)
 D = 0° 07' 19"
 R = 46,985.44'
 T = 533.67'
 L = 1,067.29'
 E = 3.03'
 e = -----
 T.R. = -----
 S.E. RUN = -----
 P.C. STA. = 126+78.73
 P.T. STA. = 137+46.02



NOTE:
 All Erosion Control measures on the eastside of IL 91 were established during the previous stages.

- NOTES:**
1. For drainage information, see drainage plans.
 2. For permanent erosion control information see landscape plans.
 3. For Temporary Widening and overlay information see staging typical sections and plans.



FILE NAME =	USER NAME = crespole	DESIGNED -	REVISED -
Default	Default	DRAWN -	REVISED -
	PLOT SCALE = 40.0000' / in.	CHECKED -	REVISED -
	PLOT DATE = 8/15/2013	DATE -	REVISED -

**STATE OF ILLINOIS
 DEPARTMENT OF TRANSPORTATION**

**EROSION CONTROL PLANS
 STAGE 3**

SCALE: SHEET OF SHEETS STA. TO STA.

F.A.S. RTE.	SECTION	COUNTY	TOTAL SHEETS	SHEET NO.
1380	7W-1,RS-3	Peoria	617	216
CONTRACT NO. 88792			ILLINOIS FED. AID PROJECT	