
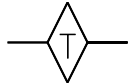
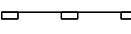

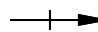
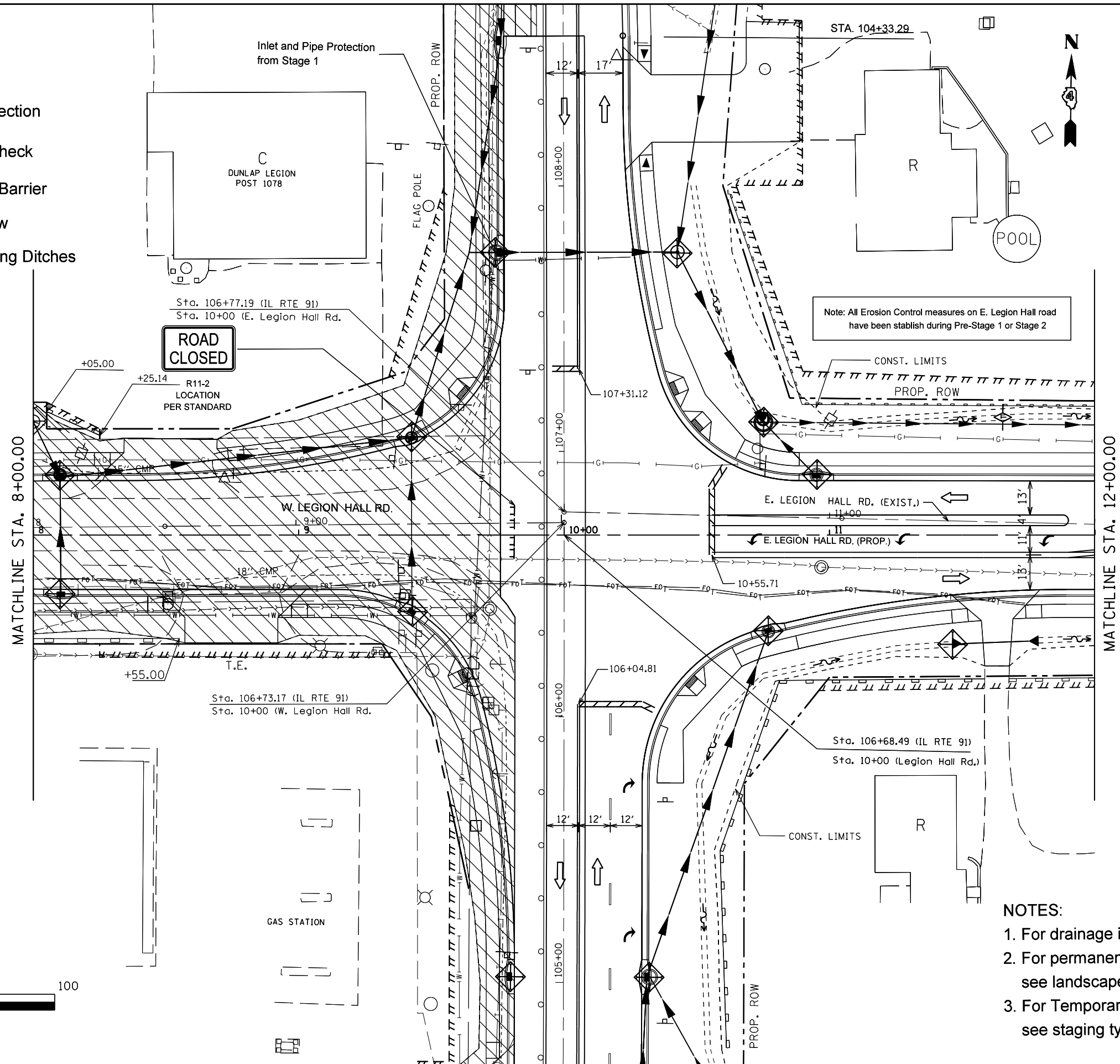


**LEGEND:**

-  Inlet and Pipe Protection
-  Temporary Ditch Check
-  Perimeter Erosion Barrier
-  Direction of the flow
-  Grading and Shaping Ditches

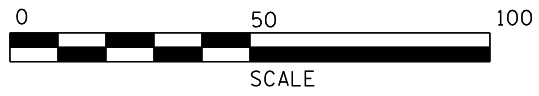


Note: All Erosion Control measures on E. Legion Hall road have been established during Pre-Stage 1 or Stage 2

MATCHLINE STA. 8+00.00

MATCHLINE STA. 12+00.00

- NOTES:**
1. For drainage information, see drainage plans.
  2. For permanent erosion control information see landscape plans.
  3. For Temporary Widening and overlay information see staging typical sections and plans.



FILE NAME =	USER NAME = crespole	DESIGNED -	REVISED -
c:\pwork\pwork\crespole\10349547\EC	Sheets for the entire project for all stages.	DRAWN -	REVISED -
Default	PLOT SCALE = 40.0000' / in.	CHECKED -	REVISED -
	PLOT DATE = 8/15/2013	DATE -	REVISED -

**STATE OF ILLINOIS  
DEPARTMENT OF TRANSPORTATION**

**EROSION CONTROL PLANS  
LEGION HALL RD STAGE 3**

SCALE: SHEET OF SHEETS STA. TO STA.

F.A.S. RTE.	SECTION	COUNTY	TOTAL SHEETS	SHEET NO.
1380	7W-1,RS-3	Peoria	617	222
			CONTRACT NO. 88792	
ILLINOIS FED. AID PROJECT				