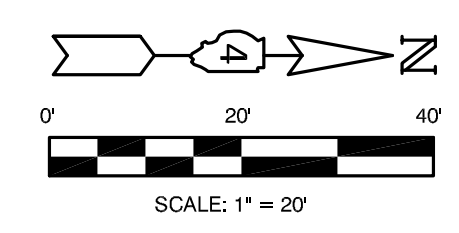


**PLAN VIEW**

SCALE: 1" = 20' HOR



WATER MAIN TEE 8"x8"	
LOCATION	
LT. STA. 106+08	1 EA.
RT. STA. 106+14.75	1 EA.
SHEET TOTAL	2 EA.

WATER MAIN TEE 8"x6"	
LOCATION	
LT. STA. 104+20	1 EA.
RT. STA. 108+54	1 EA.
SHEET TOTALS	2 EA.

FIRE HYDRANTS TO BE REMOVED	
LOCATION	
RT. STA. 108+54	1 EA.
SHEET TOTAL	1 EA.

REMOVE EXISTING WATER VALVE	
LOCATION	
LT. STA. 106+16	1 EA.
LT. STA. 106+36	1 EA.
RT. STA. 107+74	1 EA.
SHEET TOTALS	3 EA.

CONNECTION TO EXISTING WATER MAIN, 6"	
LOCATION	
W. LEGION RD. (6")	1 EA.
SHEET TOTALS	1 EA.

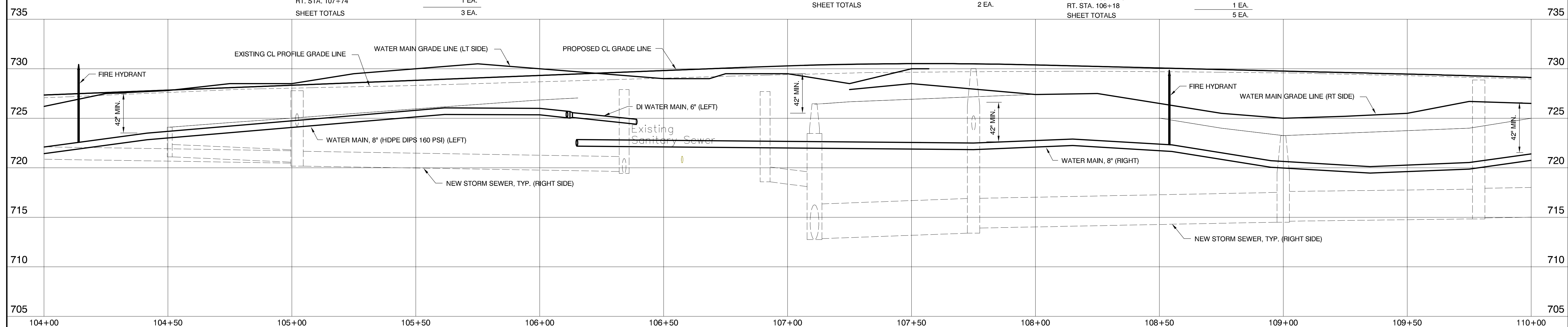
FIRE HYDRANT AND VALVE (SPECIAL)	
LOCATION	
48' LT. STA. 104+14	1 EA.
36' RT. STA. 108+54	1 EA.
SHEET TOTALS	2 EA.

WATER SERVICE CONNECTION	
LOCATION	
LT. STA. 107+57 (NO EXIST. SERVICE)	1 EA.
RT. STA. 108+47	1 EA.
SHEET TOTALS	2 EA.

WATER VALVE, 8"	
LOCATION	
LT. STA. 106+05	1 EA.
LT. STA. 106+11	1 EA.
RT. STA. 106+14.5	1 EA.
RT. STA. 106+14.5	1 EA.
RT. STA. 106+18	1 EA.
SHEET TOTALS	5 EA.

DUCTILE IRON WATER MAIN, 6"	
LOCATION	
LT. STA. 106+11	28 FT.
SHEET TOTALS	28 FT.

WATER MAIN, 8"	
LOCATION	
LT. & RT. STA. 104+00 TO STA. 110+00 (530 FT. HDPE)	738 FT.
SHEET TOTAL	738 FT.



**PROFILE VIEW**

SCALE: 1" = 20' HOR  
1" = 5' VER

**M** MOHR & KERR ENGINEERING & LAND SURVEYING, P.C.  
7336 N. University Ave. Office: (309) 692-8500  
Peoria, Illinois 61614 Fax: (309) 692-9501  
www.mohrandkerr.com Professional Design Firm #184.005091

DESIGNED	WFS	REVISED
DRAWN	DEH	REVISED
CHECKED	WFS	REVISED
DATE	08-30-13	REVISED

STATE OF ILLINOIS  
DEPARTMENT OF TRANSPORTATION

IL RTE 91  
WATER MAIN PLANS  
PLAN AND PROFILE SHEET  
SCALE: 1" = 20' SHEET NO. 8 OF 17 SHEETS STA. 104+00 TO STA. 110+00

F.A. ROUTE	SECTION	COUNTY	TOTAL SHEETS	SHEET NO.
1380	7W-1, RS-3	PEORIA	617	262
CONTRACT NO. 88792				
ILLINOIS FEDERAL ROAD DIST NO.				