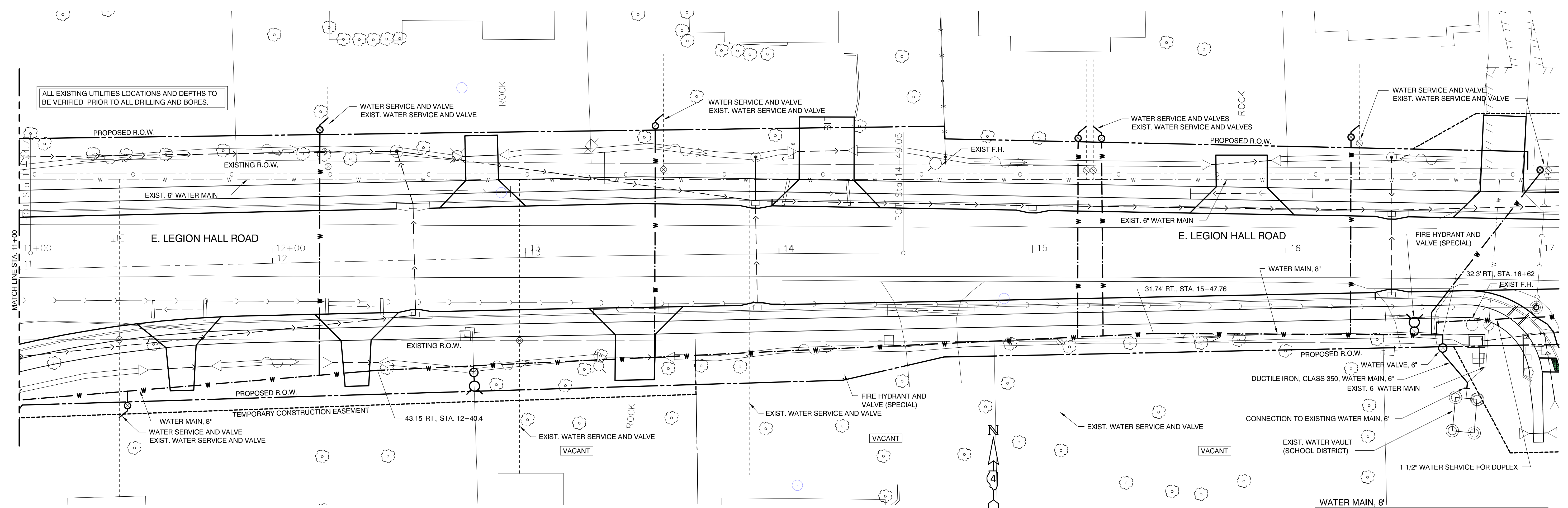
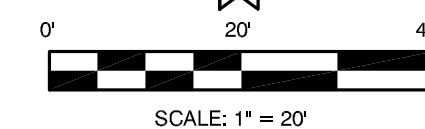


ALL EXISTING UTILITIES LOCATIONS AND DEPTHS TO BE VERIFIED PRIOR TO ALL DRILLING AND BORES.



PLAN VIEW

SCALES: 1" = 20' HOR



FIRE HYDRANTS TO BE REMOVED

LOCATION	QUANTITY
LT. STA. 14+62	1 EA.
RT. STA. 16+73.5	1 EA.
SHEET TOTAL	2 EA.

FIRE HYDRANT AND VALVE (SPECIAL)

LOCATION	QUANTITY
50' RT. STA. 12+78	1 EA.
27.5' RT. STA. 16+50.5	1 EA.
SHEET TOTALS	2 EA.

WATER MAIN TEE 8"x6"

LOCATION	QUANTITY
RT. STA. 12+78	1 EA.
RT. STA. 16+50.5	1 EA.
SHEET TOTALS	2 EA.

WATER VALVES, 6"

RT. STA. 16+62	1 EA.
SHEET TOTAL	1 EA.

REMOVE EXISTING WATER VALVE

LOCATION	QUANTITY
RT. STA. 16+80	1 EA.
SHEET TOTALS	1 EA.

WATER SERVICE CONNECTION

LOCATION	QUANTITY
RT. STA. 11+39.5	1 EA.
LT. STA. 12+22	1 EA.
RT. STA. 12+97 (VACANT LOT) (EXIST)	0 EA.
LT. STA. 13+54	1 EA.
RT. STA. 13+88 (VACANT LOT) (EXIST)	0 EA.
RT. STA. 15+11 (VACANT LOT) (EXIST)	0 EA.
LT. STA. 15+23 (2)	2 EA.
LT. STA. 16+28	1 EA.
LT. STA. 17+00 (SANITARY LIFT STATION)	1 EA.
SHEET TOTALS	7 EA.

WATER MAIN, 8"

LOCATION	QUANTITY
LT. STA. 11+00 TO STA. 16+62	562 FT.
SHEET TOTAL	562 FT.

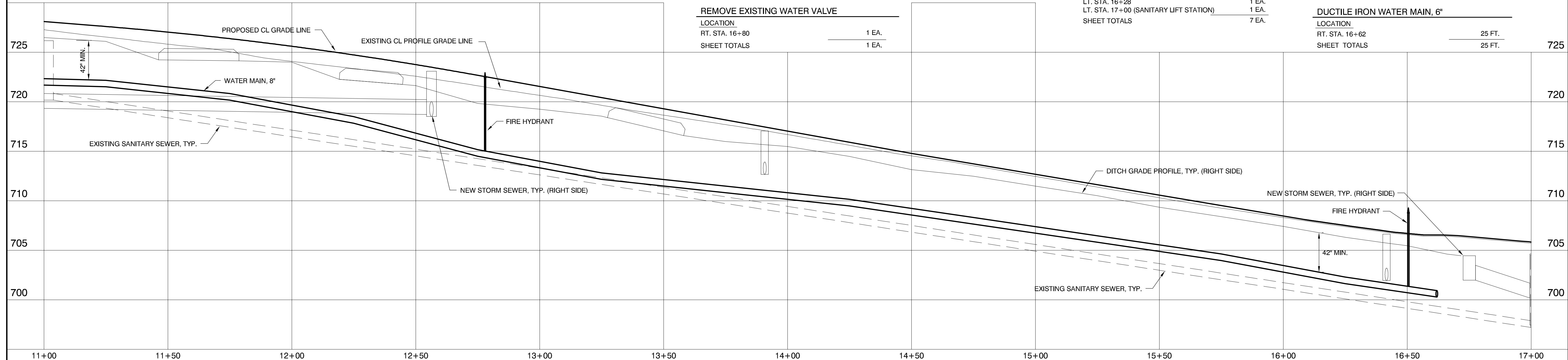
CONNECTION TO EXISTING WATER MAIN, 6"

LOCATION	QUANTITY
E. LEGION HALL ROAD (SCHOOL DISTRICT) (6")	1 EA.
SHEET TOTALS	1 EA.

DUCTILE IRON WATER MAIN, 6"

LOCATION	QUANTITY
RT. STA. 16+62	25 FT.
SHEET TOTALS	25 FT.

730



PROFILE VIEW

SCALES: 1" = 20' HOR
1" = 5' VER

M MOHR & KERR ENGINEERING & LAND SURVEYING, P.C.
7336 N. University Ave. Office: (309) 692-8500
Peoria, Illinois 61614 Fax: (309) 692-8501
www.mohrandkerr.com Professional Design Firm #184.005091

DESIGNED	WFS	REVISED
DRAWN	DEH	REVISED
CHECKED	WFS	REVISED
DATE	08-30-13	REVISED

STATE OF ILLINOIS
DEPARTMENT OF TRANSPORTATION

LEGION HALL ROAD
WATER MAIN PLANS
PLAN AND PROFILE SHEET

SCALE: 1" = 20' SHEET NO. 15 OF 17 SHEETS STA. 11+00 TO STA. 17+00

F.A. ROUTE	SECTION	COUNTY	TOTAL SHEETS	SHEET NO.
1380	7W-1, RS-3	PEORIA	617	269
CONTRACT NO. 88792				
ILLINOIS FEDERAL ROAD DIST NO.				

12-108