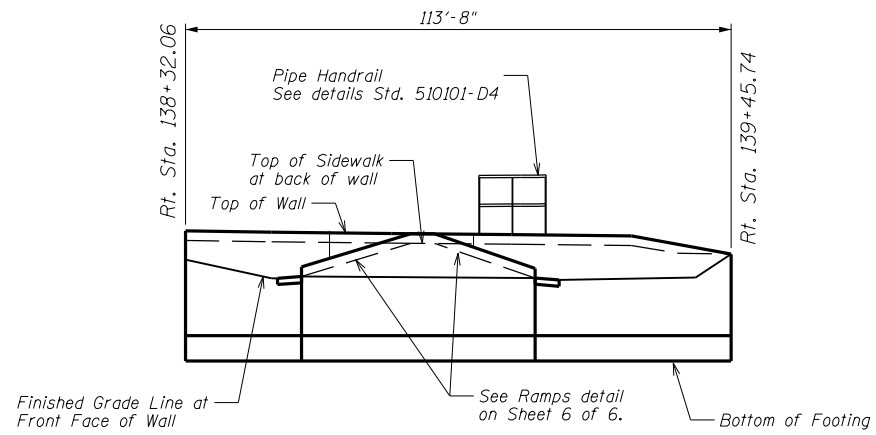
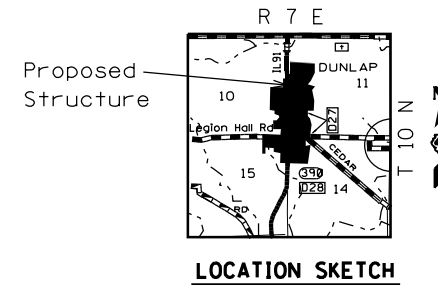


730  
725  
720  
715  
710



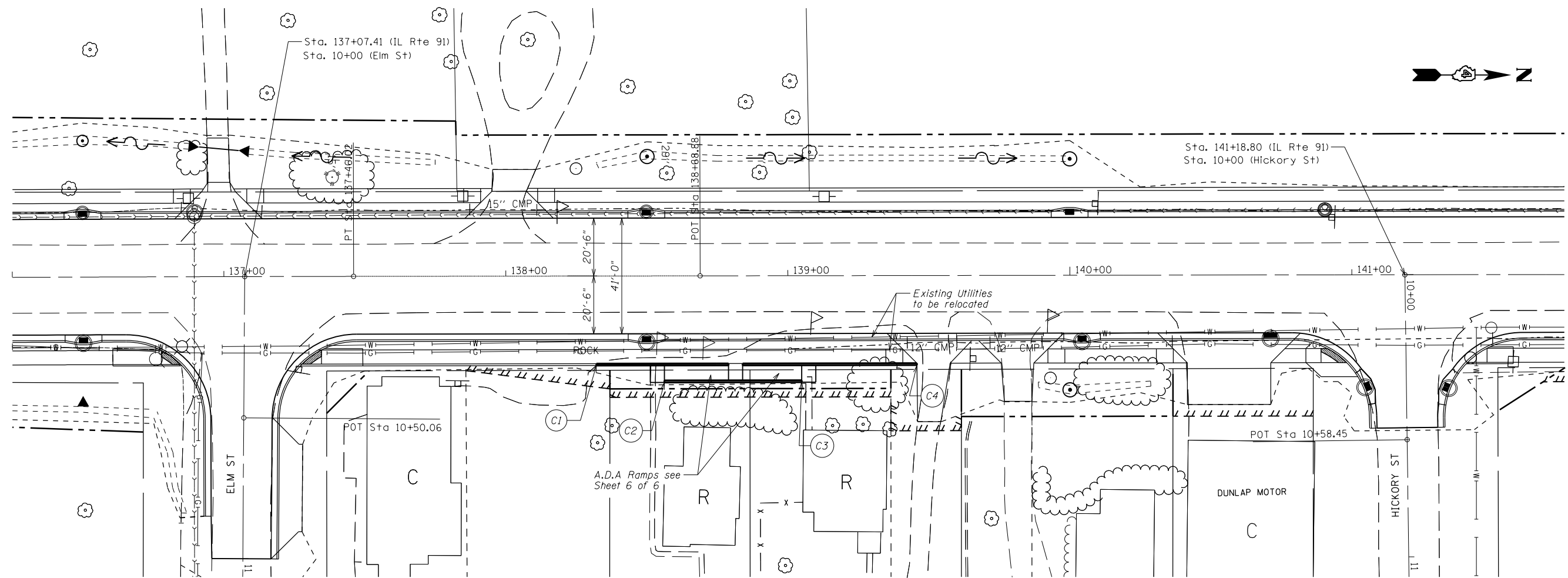
**ELEVATION**



POINT	STATION	OFFSET
C1	138+32.06	31.91 Rt.
C2	138+56.19	37.74 Rt.
C3	139+04.84	37.74 Rt.
C4	139+45.74	31.91 Rt.

**WALL CONTROL POINTS**

Wall offsets are measured from  $\varnothing$  IL 91 to the front face of wall panels



**PLAN**

**DESIGN STRESSES**  
FIELD UNITS

$f'_c = 3,500$  psi  
 $f_y = 60,000$  psi (Reinforcement)

**GENERAL PLAN & ELEVATION**  
**CONCRETE WALL & RAMPS**  
**F.A.S 1380 - SEC 7W-1, RS-3**  
**PEORIA COUNTY**  
**RT. STATION 138+32.06 TO 139+45.74**

FILE NAME =	USER NAME = crespole	DESIGNED -	REVISED -
Default	et:\pw\work\p\dot\crespole\d0330150\048792-sht-details.dgn	DRAWN -	REVISED -
	PLOT SCALE = 40.0000' / in.	CHECKED -	REVISED -
	PLOT DATE = 8/15/2013	DATE -	REVISED -

**STATE OF ILLINOIS**  
**DEPARTMENT OF TRANSPORTATION**

**GENERAL PLAN AND ELEVATION**  
**CONCRETE WALL & RAMPS**

SCALE: SHEET 1 OF 9 SHEETS STA. TO STA.

F.A.S. RTE.	SECTION	COUNTY	TOTAL SHEETS	SHEET NO.
1380	7W-1,RS-3	Peoria	617	321
ILLINOIS FED. AID PROJECT			CONTRACT NO. 88792	