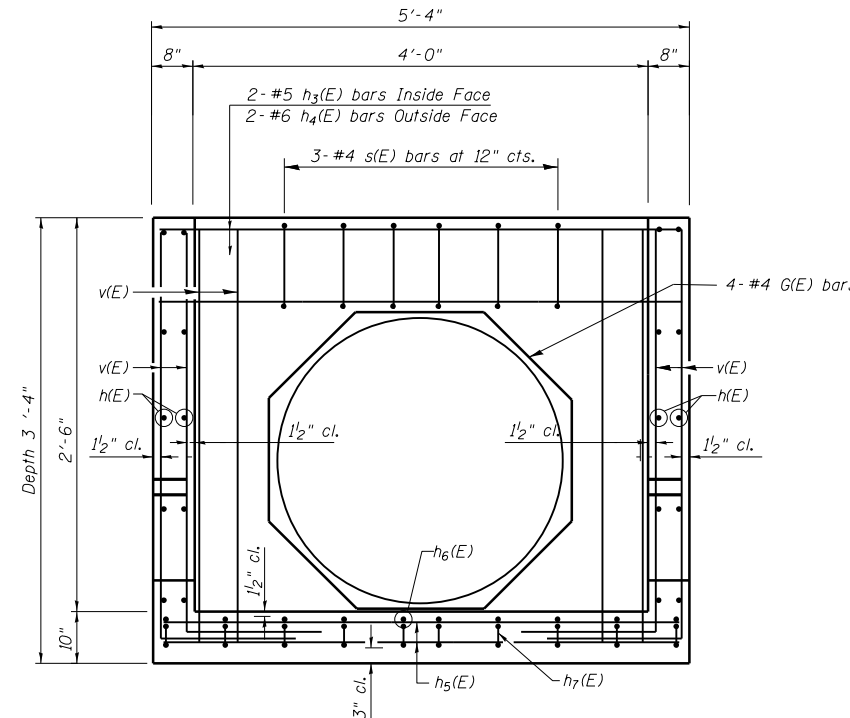
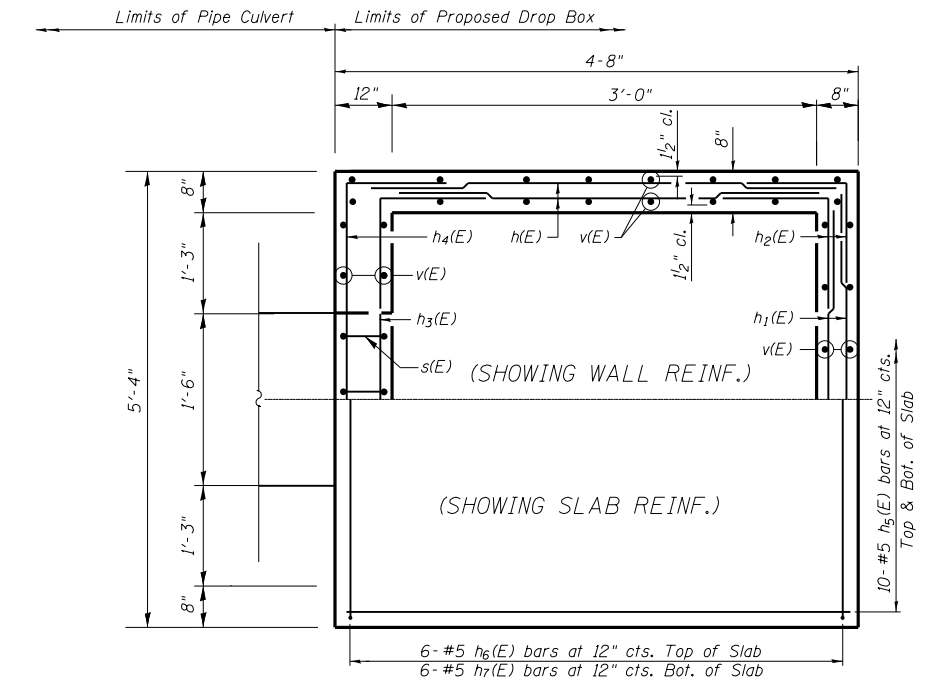
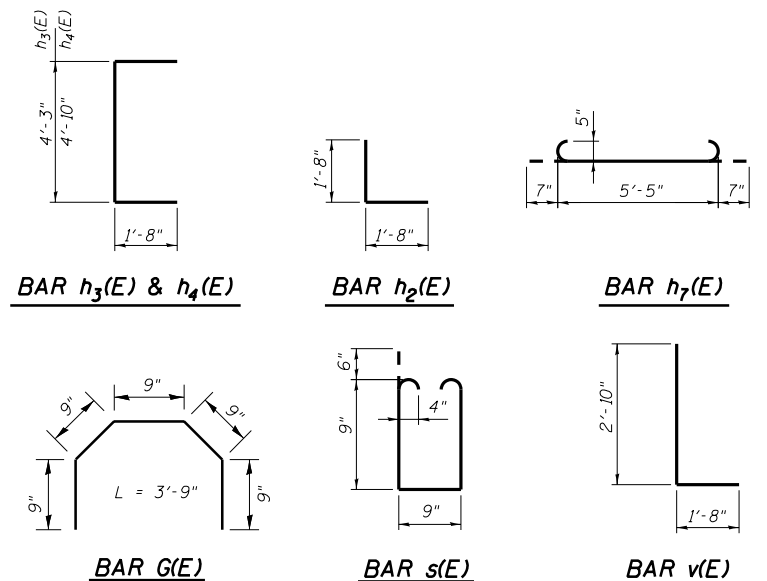


HALF LONG SECTION HALF ELEVATION

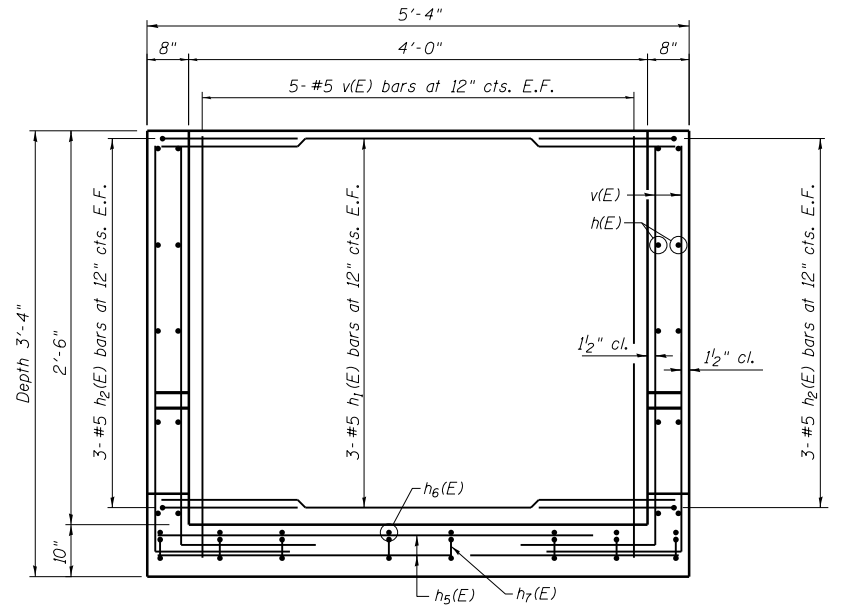


SECTION A-A

NOTES
 Reinforcement bars shall conform to the requirements of ASTM A706 Gr. 60 (IL Modified). See Special Provisions.
 The contractor shall be responsible for diverting the water flow from the construction area using a method meeting the approval of the Engineer. Cost included with "Concrete Structure".
 Drain holes shall be constructed in accordance with section 503.11.
 Reinforcement bars designated (E) shall be epoxy coated.



PLAN



SECTION B-B

BILL OF MATERIAL

Bar	No.	Size	Length	Shape
h(E)	12	#5	5'-3"	—
h1(E)	6	#5	4'-9"	—
h2(E)	12	#5	3'-4"	└
h3(E)	2	#5	7'-7"	└
h4(E)	2	#6	8'-2"	└
h5(E)	10	#5	4'-7"	—
h6(E)	6	#5	5'-3"	—
h7(E)	6	#5	6'-7"	└
s(E)	3	#4	3'-3"	└
v(E)	44	#5	4'-6"	└
G(E)	4	#4	3'-9"	└
Concrete Structure		Cu. Yd.	2.00	
Reinforcement Bars, Epoxy Coated		Pound	528.00	

DESIGN STRESSES
 FIELD UNITS

f'c = 3,500 psi
 fy = 60,000 psi (Reinforcement)

LOADING HL-93

Allow 50#/sq. ft. for future wearing surface.

SINGLE PIPE CULVERT
DROP BOX