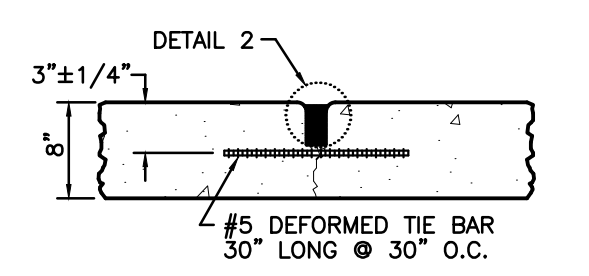
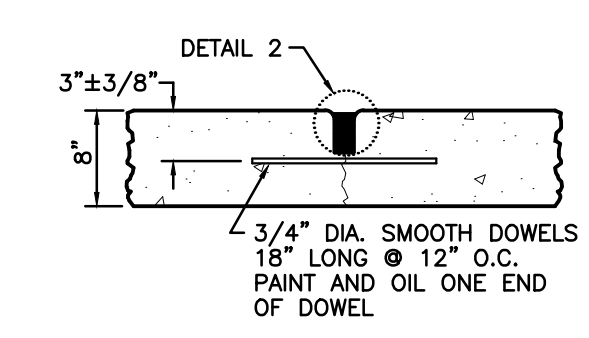


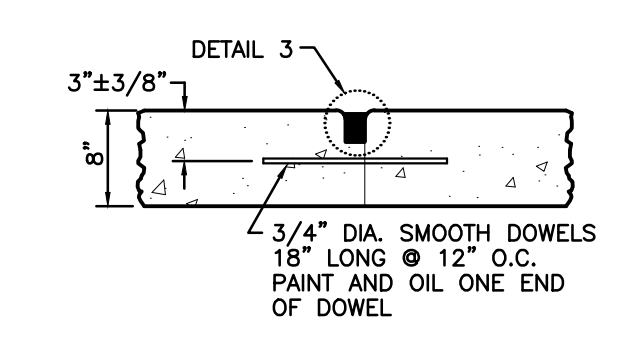
**TYPE A DOWELED JOINT**



**TYPE B HINGED JOINT**

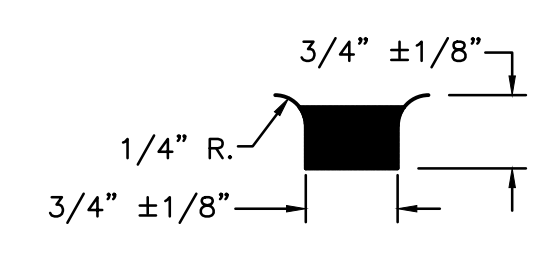


**TYPE C DOWELED JOINT**

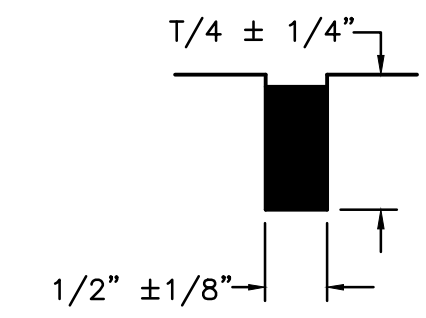


**TYPE D DOWELED JOINT (CONSTRUCTION JOINT)**

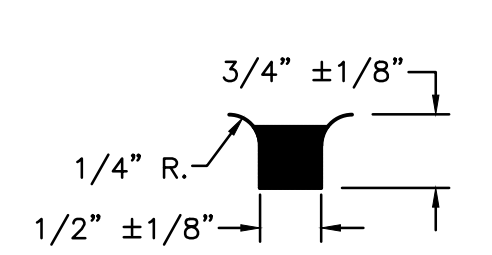
**JOINT DETAILS**  
NOT TO SCALE



**DETAIL 1**



**DETAIL 2**



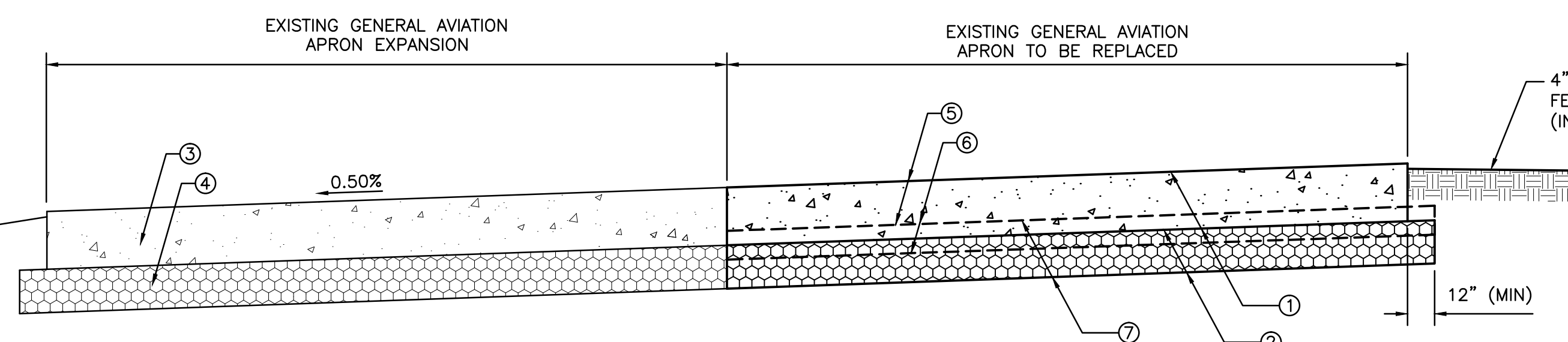
**DETAIL 3**

**JOINT FILLER DETAILS**  
NOT TO SCALE

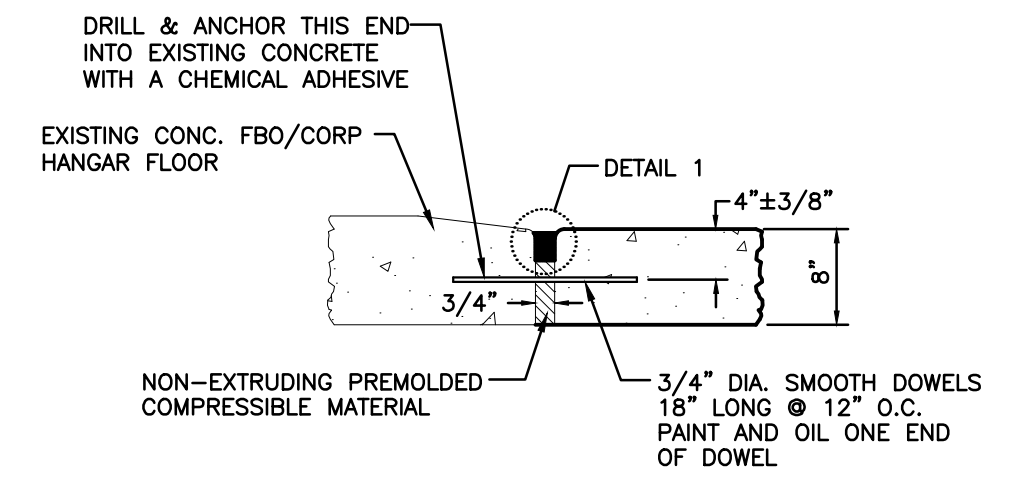
**LEGEND**

	CONCRETE PAVEMENT (5,570 SQ. YD.)
	ASPHALT PAVEMENT REMOVAL (115 SQ. YD.)
	CONCRETE PAVEMENT REMOVAL (5,455 SQ. YD.)
	4" CONCRETE SIDEWALK REMOVAL & REPLACEMENT (10 SQ. YD.)

- ① PROPOSED 8" P.C.C. PAVEMENT
- ② PROPOSED CRUSHED AGGREGATE BASE COURSE (209), 6" DEPTH
- ③ EXISTING 8" P.C.C. PAVEMENT
- ④ EXISTING CRUSHED AGGREGATE BASE COURSE (209), 6" DEPTH.
- ⑤ EXISTING P.C.C. PAVEMENT TO BE REMOVED
- ⑥ EXISTING CRUSHED AGGREGATE BASE COURSE, 4" DEPTH TO BE REMOVED (PAID AS UNCLASSIFIED EXCAVATION)
- ⑦ UNCLASSIFIED EXCAVATION, 8" DEPTH TO BE REMOVED



**SECTION A-A**  
**TYPICAL APRON PAVEMENT**  
N.T.S.



**SECTION B**  
**PAVEMENT @ FBO OVERHEAD DOOR**  
N.T.S.

CHAMLIN & ASSOCIATES, INC. © 2011  
Drawing Name: G:\Users\11102-09-Peru-CA-Apron-Rehab\CAD\Final Plans - 100%\_005-PAVING.dwg Last Modified: Jun 02, 2013 1:05pm Plotted on: Nov 22, 2013 2:06pm by lhm

DRAWN BY: TIM H	REVISIONS			
CHECKED BY: KWH	LEVEL	BY	DATE	DESCRIPTION
DATE: 11/13				

**CHAMLIN & ASSOCIATES**  
PERU MORRIS ILLINOIS

**ILLINOIS VALLEY REGIONAL AIRPORT**  
**ILLINOIS PROJECT NO. VYS-4191**  
**STATE BLOCK GRANT No. 3-17-0060-B22**

**PAVING PLAN**

<b>CONSTRUCTION PLANS</b>	CURRENT AS OF: 11/13	
	SCALE: AS NOTED	SHEET 5
	FILE NO.: 1102.00 Y-	OF 5