

014

01-17-2020 LETTING ITEM 014

STATE OF ILLINOIS
DEPARTMENT OF TRANSPORTATION

F.A. RTE.	SECTION	COUNTY	TOTAL SHEETS	SHEET NO.
1) FAP 341 2) FAU 2691	2019-071-BP	COOK	11	1
BLINDS			CONTRACT NO. 62J52	

FOR INDEX OF SHEETS, SEE SHEET NO. 2

IMPROVEMENTS ARE LOCATED
IN THE CITY OF DES PLAINES

TRAFFIC DATA:

WOLF RD

2018 ADT = 9650
POSTED SPEED LIMIT = 35 MPH

TOUHY AVE

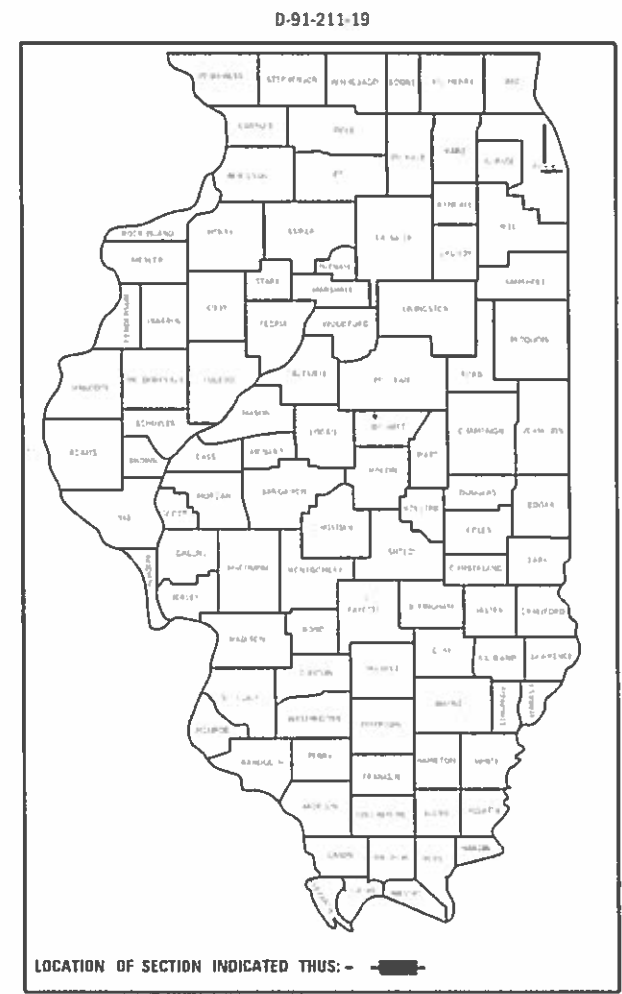
2014 ADT = 32600
POSTED SPEED LIMIT = 40 MPH

PROPOSED
HIGHWAY PLANS

- 1) FAP ROUTE 341: TOUHY AVE OVER DES PLAINES RIVER
- 2) FAU ROUTE 2691: WOLF RD OVER WELLER DITCH

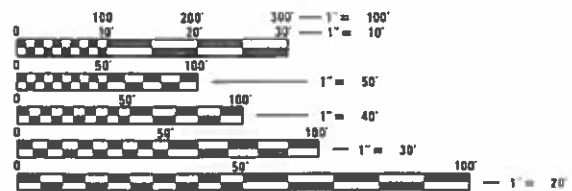
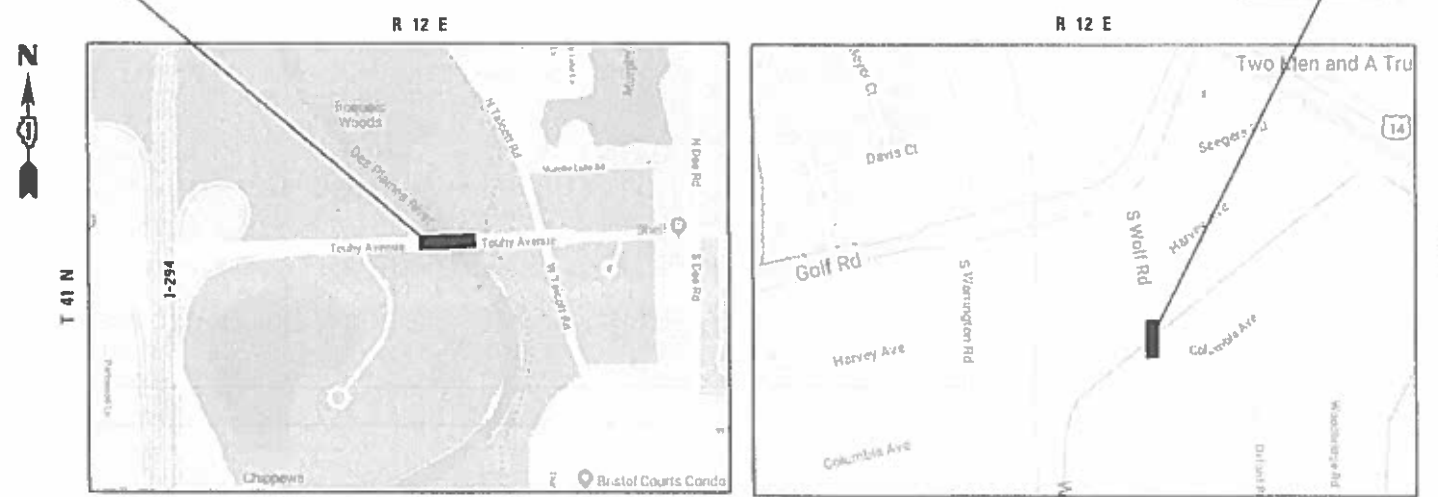
SECTION 2019-071-BP
PROJECT: STP-NHPP-HTU8(885)
BRIDGE PAINTING
COOK COUNTY

C-91-440-19



1) SN 016-0829
TOUHY AVE OVER
DES PLAINES RIVER

2) SN 016-2009
WOLF RD OVER
WELLER DITCH



FULL SIZE PLANS HAVE BEEN PREPARED USING STANDARD
ENGINEERING SCALES. REDUCED SIZED PLANS WILL NOT
CONFORM TO STANDARD SCALES. IN MAKING MEASUREMENTS
ON REDUCED PLANS, THE ABOVE SCALES MAY BE USED.

J.U.L.I.E.
JOINT UTILITY LOCATION INFORMATION FOR EXCAVATORS
1-800-892-0123
OR 811

PROJECT ENGINEER: MIDY, J. ALAIN (847) 221-3056
PROJECT MANAGER: AQUEEL, FAWAD (847) 705-4247

CONTRACT NO. 62J52

MAINE TOWNSHIP

STATE OF ILLINOIS
DEPARTMENT OF TRANSPORTATION

SUBMITTED *December 15, 2019*

Anthony J. Bingley REGIONAL ENGINEER
Dec 16 2019

Scott A. Etk
ENGINEER OF DESIGN AND ENVIRONMENT

Paul P. [Signature]
DIRECTOR OF HIGHWAYS PROJECT IMPLEMENTATION

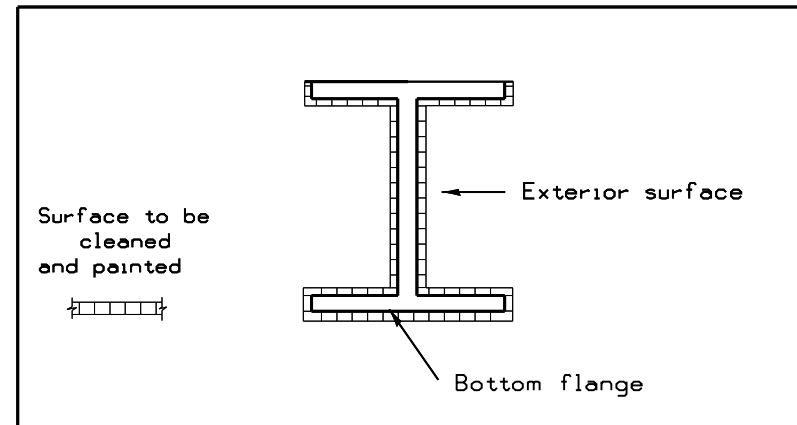
PRINTED BY THE AUTHORITY
OF THE STATE OF ILLINOIS

INDEX OF SHEETS

SHEET NO.	DESCRIPTION
1.	COVER SHEET
2.	INDEX OF SHEETS, STATE STANDARDS, AND GENERAL NOTES
3.	SUMMARY OF QUANTITIES
4-7.	BRIDGE DETAILS SN 016-0829
8-9.	BRIDGE DETAILS SN 016-2009
10.	TRAFFIC CONTROL AND PROTECTION FOR SIDE ROADS, INTERSECTIONS, AND DRIVEWAYS (TC-10)
11.	ARTERIAL ROAD INFORMATION SIGN (TC-22)

STATE STANDARDS

STD. NO.	DESCRIPTION
701001-02	OFF-RD OPERATIONS, 2L, 2W, MORE THAN 15' AWAY
701006-05	OFF-RD OPERATIONS, 2L, 2W, 15' TO 24' FROM PAVEMENT EDGE
701101-05	OFF-RD OPERATIONS, MULTILANE, 15' TO 24' FROM PAVEMENT EDGE
701106-02	OFF-RD OPERATIONS, MULTILANE, MORE THAN 15' AWAY
701501-06	URBAN LANE CLOSURE, 2L, 2W, UNDIVIDED
701606-10	URBAN LANE CLOSURE, MULTILANE, 2W WITH MOUNTABLE MEDIAN
701801-06	SIDEWALK, CORNER OR CROSSWALK CLOSURE
701901-08	TRAFFIC CONTROL DEVICES



GENERAL NOTES

BEFORE STARTING ANY EXCAVATION, THE CONTRACTOR SHALL CALL "J.U.L.I.E." AT (800) 892-0123 OR 811 FOR FIELD LOCATIONS OF BURIED ELECTRIC, TELEPHONE AND GAS UTILITIES. (48 HOUR NOTIFICATION IS REQUIRED)

THE CONTRACTOR SHALL COORDINATE CONSTRUCTION ACTIVITIES WITH UTILITY COMPANIES, AND THE CITY OF DES PLAINES.

THE CONTRACTOR WILL NOT BE ALLOWED TO SET UP A YARD OR FIELD OFFICE ON STATE PROPERTY WITHOUT WRITTEN PERMISSION FROM THE DEPARTMENT.

THE CONTRACTOR SHALL CONTACT THE DISTRICT ONE TRAFFIC CONTROL SUPERVISOR AT (847) 705-4470 A MINIMUM OF 72 HOURS IN ADVANCE OF BEGINING WORK.

PLAN DIMENSIONS AND DETAILS RELATIVE TO EXISTING PLANS ARE SUBJECT TO NOMINAL CONSTRUCTION VARIATIONS. THE CONTRACTOR SHALL FIELD VERIFY EXISTING DIMENSIONS AND DETAILS AFFECTING NEW CONSTRUCTION AND MAKE NECESSARY APPROVED ADJUSTMENTS PRIOR TO CONSTRUCTION OR ORDERING OF MATERIALS. SUCH VARIATIONS SHALL NOT BE CAUSE FOR ADDITIONAL COMPENSATION FOR A CHANGE IN SCOPE OF THE WORK. HOWEVER, THE CONTRACTOR WILL BE PAID FOR THE QUANTITY ACTUALLY FURNISHED BASED AT THE UNIT PRICE BID FOR THE WORK.

ALL VERTICAL CLEARANCE SIGNAGE, IF EXISTING, SHALL BE RESTORED TO THE CONDITION EXISTING PRIOR TO THE START OF WORK ASSOCIATED WITH THIS CONTRACT.

THE CONTRACTOR SHALL BE REQUIRED TO PROVIDE ACCESS TO ABUTTING PROPERTY AT ALL TIMES DURING THE CONSTRUCTION OF THIS PROJECT.

DO NOT SCALE PLANS FOR CONSTRUCTION DIMENSIONS.

IT SHALL BE THE CONTRACTOR'S RESPONSIBILITY TO PROTECT AND PRESERVE THE EXISTING BRIDGE LIGHTING AT ANY LOCATIONS THAT LIGHTING IS ENCOUNTERED ADJACENT TO AN AREA TO BE CLEANED AND PAINTED.

GENERAL PAINT NOTES

CLEANING AND PAINTING OF THE EXISTING STRUCTURAL STEEL SHALL BE AS SPECIFIED IN THE SPECIAL PROVISION FOR "CLEANING AND PAINTING EXISTING STEEL STRUCTURES".

SN 016-0829

ALL BEAMS, BEARINGS AND OTHER STRUCTURAL STEEL SHALL BE CLEANED PER NEAR WHITE BLAST CLEANING - SSPC-SP10. THESE AREAS SHALL BE PAINTED ACORDING TO THE REQUIREMENTS OF PAINT SYSTEM 1 -OZ/E/U. THE COLOR OF THE FINAL FINISH COAT FOR ALL INTERIOR STEEL SURFACES SHALL BE GRAY, MUNSELL NO 5B 7/1. THE COLOR OF THE FINAL FINISH COAT FOR THE EXTERIOR AND BOTTOM FLANGE OF THE FASCIA BEAMS SHALL BE REDDISH BROWN, MUNSELL NO 2.5YR 3/4.

ALL ITEMS (SUCH AS, BUT NOT LIMITED TO: CONDUITS, BRACKETS AND DECK DRAINS) ATTACHED TO OUTSIDE OF THE FASCIA BEAMS SHOULD BE CLEANED AND PAINTED

SN 016-2009

HANDRAIL ONLY SHALL BE CLEANED PER NEAR WHITE BLAST CLEANING - SSPC-SP10. THE AREA OF HANDRAIL SHALL BE PAINTED ACORDING TO THE REQUIREMENTS OF PAINT SYSTEM 1 -OZ/E/U. THE COLOR OF THE FINISH COAT SHALL BE GRAY, MUNSELL NO 5B 7/1.

A MINIMUM OF ONE (1) AIR MONITOR FOR SN 016-0829 WILL BE REQUIRED TO MONITOR ABRASIVE BLASTING AND A MINIMUM OF FOUR (4) FOR SN 016-2009.

OPERATIONS. SEE SPECIAL PROVISIONS FOR "CONTAINMENT AND DISPOSAL OF LEAD PAINT CLEANING RESIDUES."

* 1) FAP 341
2) FAU 2691

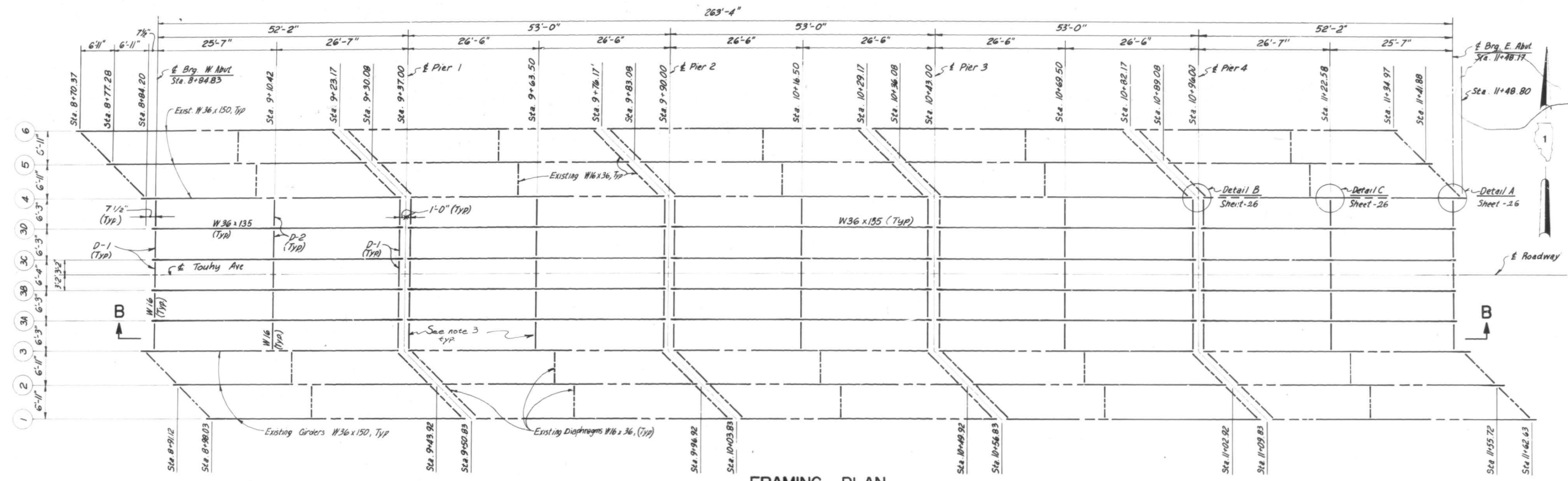
MODEL: Default
FILE: \\blm1c1-pub\baronm.d\at\links\pwr\PROJECTS\DOT\Office\Drawings\1\Projects\0121119\CADD\Drawings\DOT\0121119-shr-geom-std.dgn

USER NAME = gorenautab	DESIGNED -	REVISED -	STATE OF ILLINOIS DEPARTMENT OF TRANSPORTATION	F.A. RTE.	SECTION	COUNTY	TOTAL SHEETS	SHEET NO.
PLOT SCALE = 100.0000' / in.	DRAWN -	REVISED -		*	2018-071-BP	COOK	11	2
PLOT DATE = 7/25/2019	CHECKED -	REVISED -		CONTRACT NO. 62J52				
	DATE -	REVISED -		SCALE:	SHEET	OF	SHEETS	STA.
			ILLINOIS FED. AID PROJECT					

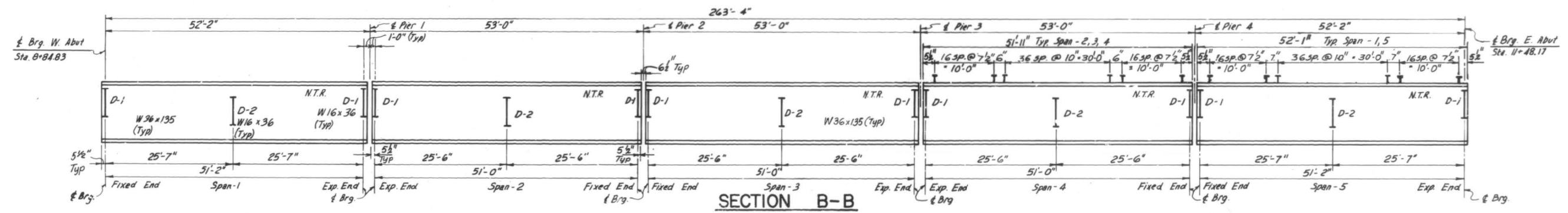
SUMMARY OF QUANTITIES			URBAN TOTAL QUANTITIES	CONSTRUCTION TYPE CODE 0047				SUMMARY OF QUANTITIES			TOTAL QUANTITIES	CONSTRUCTION TYPE CODE			
CODE NO	ITEM	UNIT		NHPP 80% FED 20% STATE 1) SN 016-0829	STP 80% FED 20% STATE 2) SN 016-2009										
67000400	ENGINEER'S FIELD OFFICE, TYPE A	CAL MO	3	2	1										
67100100	MOBILIZATION	L SUM	1	0.5	0.5										
70102625	TRAFFIC CONTROL AND PROTECTION, STANDARD 701606	L SUM	1	1											
70102640	TRAFFIC CONTROL AND PROTECTION, STANDARD 701801	L SUM	1	0.5	0.5										
Z0007112	CONTAINMENT AND DISPOSAL OF LEAD PAINT CLEANING RESIDUES	L SUM	1	0.5	0.5										
Z0010501	CLEANING AND PAINTING STEEL BRIDGE NO. 1	L SUM	1	1											
Z0010502	CLEANING AND PAINTING STEEL BRIDGE NO. 2	L SUM	1		1										
Z0030850	TEMPORARY INFORMATION SIGNING	SO FT	102.8	51.4	51.4										

*1) FAP 341
2) FAU 2691

REV. - MS



FRAMING PLAN



SECTION B-B

FOR INFORMATION ONLY

* 1) FAP 341
2) FAU 2691

MODEL: Default
 FILE: \\blm\c:\pub\baron\m.d\illinois\p\DOT\Documents\DOT Office\Drawings\19-CADD\Drawings\19-0829-01\19-0829-01.dwg

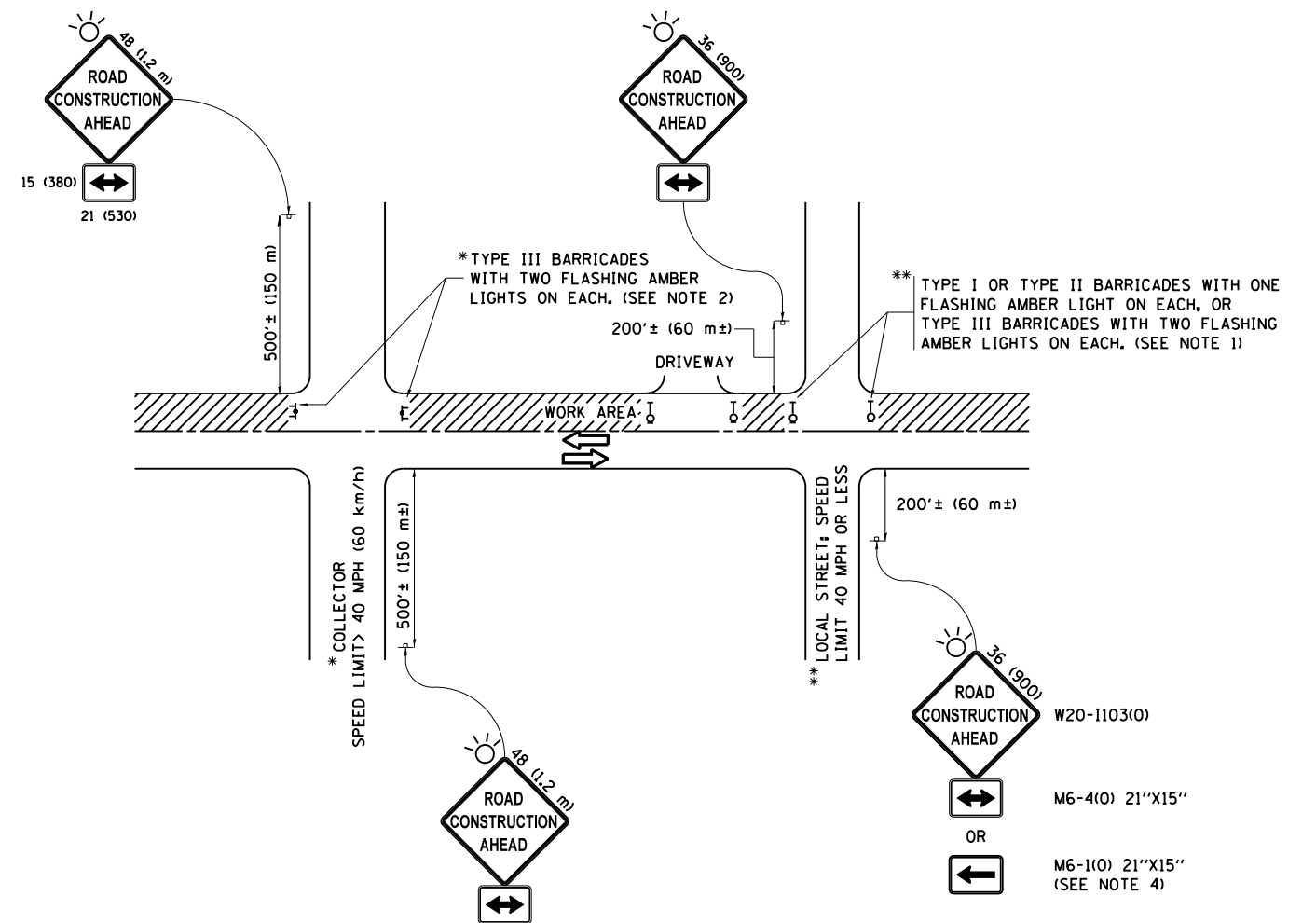
USER NAME = gorenautab	DESIGNED -	REVISED -
	DRAWN -	REVISED -
PLOT SCALE = 100.0000' / in.	CHECKED -	REVISED -
PLOT DATE = 7/25/2019	DATE -	REVISED -

**STATE OF ILLINOIS
DEPARTMENT OF TRANSPORTATION**

**EXISTING BRIDGE FRAMING PLAN
TOUHY AVE OVER DES PLAINES RIVER (SN 016-0829)**

SCALE: SHEET 2 OF 4 SHEETS STA. TO STA.

F.A. RTE.	SECTION	COUNTY	TOTAL SHEETS	SHEET NO.
*	2019-070-BP	COOK	11	5
CONTRACT NO. 62J52				
ILLINOIS FED. AID PROJECT				



NOTES:

1. SIDE ROAD WITH A SPEED LIMIT OF 40 MPH (60 km/h) OR LESS AS SHOWN ON THE DRAWING AND AS DIRECTED BY THE ENGINEER:
 - a) ONE "ROAD CONSTRUCTION AHEAD" SIGN 36 x 36 (900x900) WITH A FLASHER MOUNTED ON IT APPROXIMATELY 200' (60 m) IN ADVANCE OF THE MAIN ROUTE.
 - b) THE CLOSED PORTION OF THE MAIN ROUTE SHALL BE PROTECTED BY BLOCKING WITH TYPE I, TYPE II OR TYPE III BARRICADES, 1/3 OF THE CROSS SECTION OF THE CLOSED PORTION.
2. SIDE ROAD WITH A SPEED LIMIT GREATER THAN 40 MPH (60 km/h) AS SHOWN ON THE DRAWING AND AS DIRECTED BY THE ENGINEER:
 - a) ONE "ROAD CONSTRUCTION AHEAD" SIGN 48 x 48 (1.2 m x 1.2 m) WITH A FLASHER MOUNTED ON IT APPROXIMATELY 500' (150 m) IN ADVANCE OF THE MAIN ROUTE.
 - b) THE CLOSED PORTION OF THE MAIN ROUTE SHALL BE PROTECTED BY BLOCKING WITH TYPE III BARRICADES, 1/2 OF THE CROSS SECTION OF THE CLOSED PORTION.
3. CONES MAY BE SUBSTITUTED FOR BARRICADES OR DRUMS AT HALF THE SPACING DURING DAY OPERATIONS. CONES SHALL BE A MINIMUM OF 28 (710) IN HEIGHT.
4. WHEN THE SIDE ROAD LIES BETWEEN THE BEGINNING OF THE MAINLINE SIGNING AND THE WORK ZONE, A SINGLE HEADED ARROW (M6-1) SHALL BE USED IN LIEU OF THE DOUBLE HEADED ARROW (M6-4).
5. WHEN WORK IS BEING PERFORMED ON A SIDE ROAD OR DRIVEWAY, FOLLOW THE APPLICABLE STANDARD(S). THE DIRECTIONAL ARROW (M6-1 OR M6-4) SHALL BE COVERED OR REMOVED WHEN NO LONGER CONSISTENT WITH THE TRAFFIC CONTROL SET-UP.
6. ADVANCE WARNING SIGNS ARE TO BE OMITTED ON DRIVEWAYS UNLESS OTHERWISE SPECIFIED IN THE PLANS OR BY THE ENGINEER.
7. THE TRAFFIC CONTROL AND PROTECTION FOR SIDE ROADS, INTERSECTIONS, AND DRIVEWAYS SHALL BE INCLUDED IN THE COST OF SPECIFIED TRAFFIC CONTROL STANDARDS OR ITEMS.

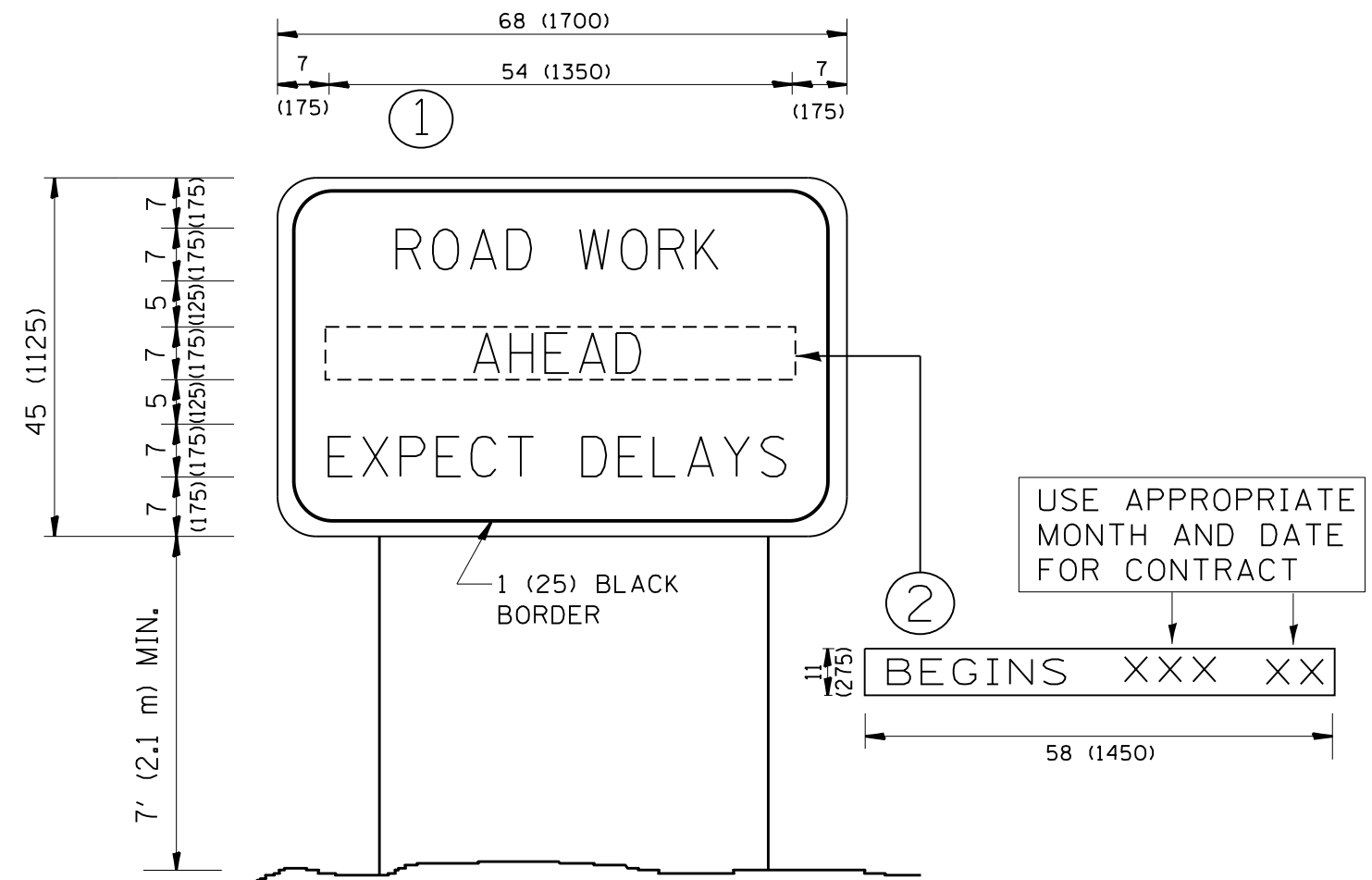
All dimensions are in inches (millimeters) unless otherwise shown.

FILE NAME =	USER NAME = gorengautab	DESIGNED - L.H.A.	REVISED - A. HOUSEH 10-15-96
pw:\planroom.dot.illinois.gov\PIDOT\Documents\IDOT Offices\District 1\Projects\012111\Design\DistStd.dgn		DRAWN	REVISED - T. RAMMACHER 01-06-00
Default	PLOT SCALE = 100.0000' / in.	CHECKED -	REVISED - A. SCHUETZE 07-01-13
	PLOT DATE = 7/26/2019	DATE - 06-89	REVISED - A. SCHUETZE 09-15-16

**STATE OF ILLINOIS
DEPARTMENT OF TRANSPORTATION**

TRAFFIC CONTROL AND PROTECTION FOR SIDE ROADS, INTERSECTIONS, AND DRIVEWAYS			
SCALE: NONE	SHEET 1	OF 1 SHEETS	STA. TO STA.

F.A. RTÉ.	SECTION	COUNTY	TOTAL SHEETS	SHEET NO.
21 FAU 2591	2019-071-BP	COOK	11	10
TC-10			CONTRACT NO. 62J52	
ILLINOIS FED. AID PROJECT				



NOTES:

1. USE BLACK LETTERING ON ORANGE BACKGROUND.
2. ERECT SIGNS IN ADVANCE OF THE LOCATION FOR THE "ROAD CONSTRUCTION AHEAD" SIGN AT LOCATIONS AS DIRECTED BY THE ENGINEER.
3. ERECT SIGN ① WITH INSTALLED PANEL ② ONE WEEK PRIOR TO THE START OF CONSTRUCTION.
4. REMOVE PANEL ② SOON AFTER THE START OF CONSTRUCTION.
5. SEE SPECIAL PROVISION FOR "TEMPORARY INFORMATION SIGNING" FOR ADDITIONAL INFORMATION.
6. ONE SIGN ASSEMBLY EQUALS 25.70 SQ. FT. (2.3 SQ. M.)
7. SHALL BE PAID FOR AS TEMPORARY INFORMATION SIGNING.

ALL DIMENSIONS ARE IN INCHES (MILLIMETERS) UNLESS OTHERWISE SHOWN.

FILE NAME =	USER NAME = gorengautab	DESIGNED -	REVISED - R. MIRS 09-15-97
pw:\planroom.dot\illinois.gov\PIDOT\Documents\IDOT Offices\District 1\Projects\012111\Design\DistStd.dgn		DRAWN -	REVISED - R. MIRS 12-11-97
PLOT SCALE = 100.0000' / 1in.		CHECKED -	REVISED - T. RAMMACHER 02-02-99
PLOT DATE = 7/26/2019		DATE -	REVISED - C. JUCIUS 01-31-07

STATE OF ILLINOIS
DEPARTMENT OF TRANSPORTATION

ARTERIAL ROAD
INFORMATION SIGN

SCALE: NONE SHEET NO. 1 OF 1 SHEETS STA. TO STA.

• 11 FAP 341
21 FAU 2691

F.A. RTE.	SECTION	COUNTY	TOTAL SHEETS	SHEET NO.
•	2019-071-BP	COOK	11	11
TC-22		CONTRACT NO. 62J52		
FED. ROAD DIST. NO. 1 ILLINOIS FED. AID PROJECT				