

INDEX OF SHEETS

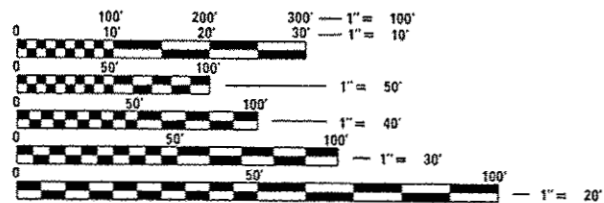
1. COVER SHEET
2. GENERAL NOTES
- 3-4. SUMMARY OF QUANTITIES
5. TYPICAL SECTIONS
6. SCHEDULES
7. GENERAL PLAN AND ELEVATION FOR STRUCTURE NO. 078-0001

STANDARDS

- 000001-06 STANDARD SYMBOLS, ABBREVIATIONS AND PATTERNS
- 001001-02 AREAS OF REINFORCEMENT BARS
- 001006 DECIMAL OF AN INCH AND OF A FOOT
- 701101-05 OFF-ROAD OPERATIONS, MULTILANE, 15' (4.5 m) TO 24" (600 mm) FROM PAVEMENT EDGE
- 701106-02 OFF-ROAD OPERATIONS, MULTILANE, MORE THAN 15' (4.5 m) AWAY
- 701400-09 APPROACH TO LANE CLOSURE, FREEWAY/EXPRESSWAY
- 701401-10 LANE CLOSURE, FREEWAY/EXPRESSWAY
- 701426-09 LANE CLOSURE, MULTILANE INTERMITTENT OR MOVING OPERATION, FOR SPEEDS ≥ 45 MPH
- 701428-01 TRAFFIC CONTROL, SETUP AND REMOVAL, FREEWAY/EXPRESSWAY
- 701901-06 TRAFFIC CONTROL DEVICES
- 701001-02
- 701006-05
- 701406-11

PROJECT LOCATION

**STRUCTURE NUMBER 078-0001
CARRYING FAI 180 (I-180)
OVER THE ILLINOIS RIVER
1.82 MILES EAST OF IL 26
AT HENNEPIN**



FULL SIZE PLANS HAVE BEEN PREPARED USING STANDARD ENGINEERING SCALES. REDUCED SIZED PLANS WILL NOT CONFORM TO STANDARD SCALES. IN MAKING MEASUREMENTS ON REDUCED PLANS, THE ABOVE SCALES MAY BE USED.

J.U.L.I.E.
JOINT UTILITY LOCATION INFORMATION FOR EXCAVATION
1-800-892-0123
OR 811

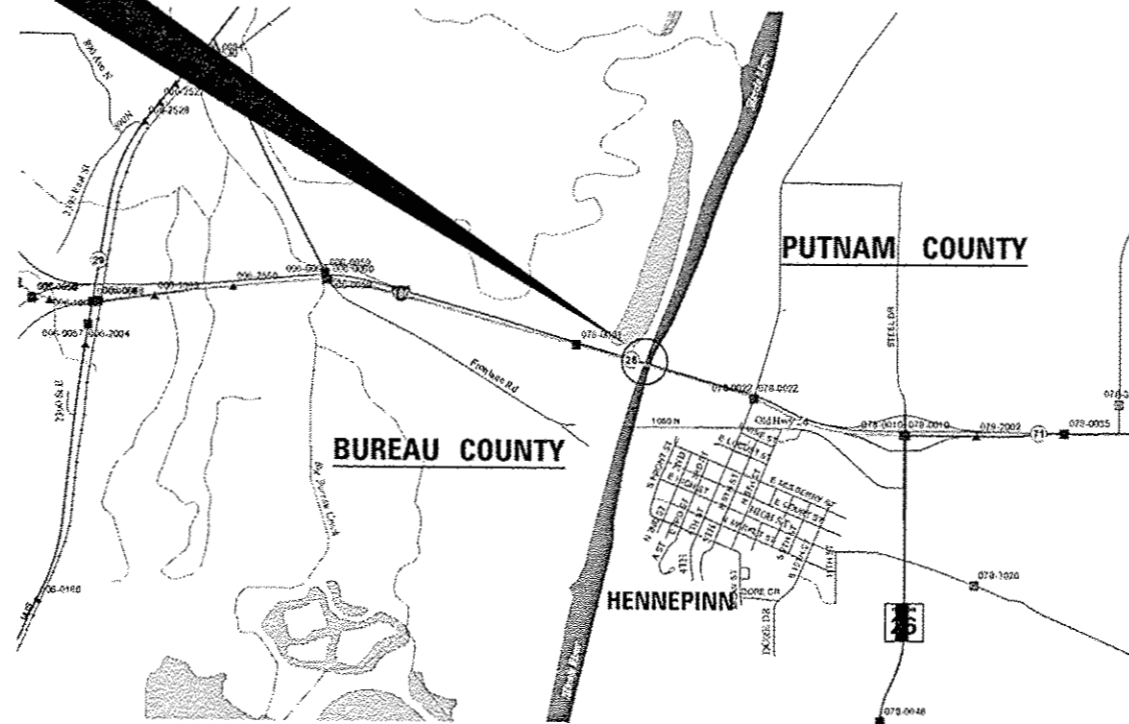
**PROJECT ENGINEER: JOE KANNEL P.E.
UNIT CHIEF: RON WOODSHANK**

CONTRACT NO. 66F87

**STATE OF ILLINOIS
DEPARTMENT OF TRANSPORTATION**

**PROPOSED
HIGHWAY PLANS**

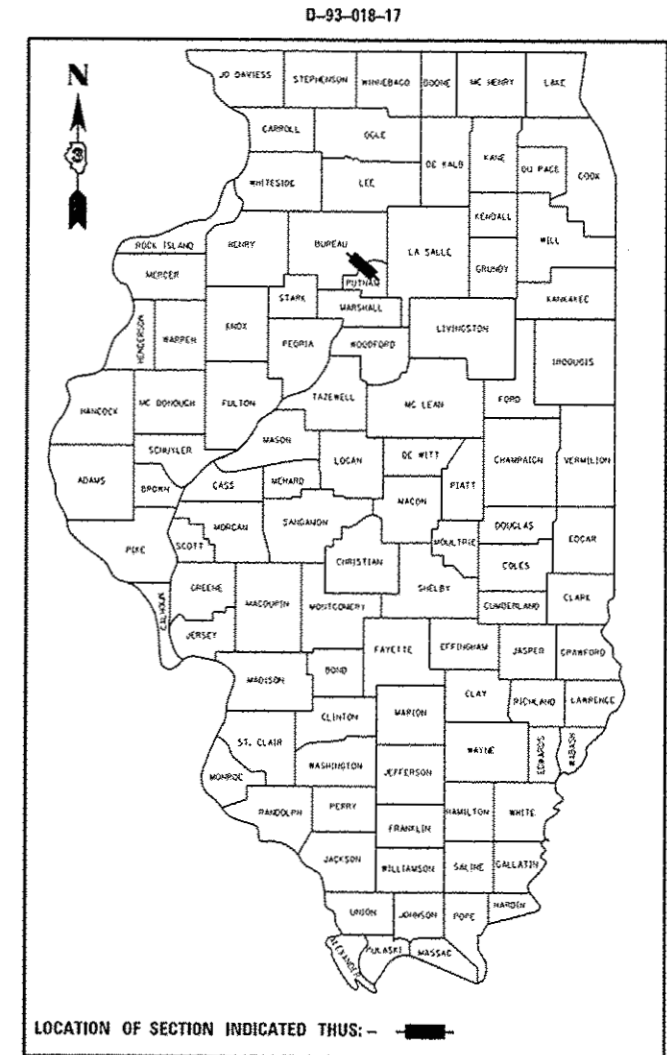
**FAI 180 (I-180)
(06-3, 078-1)MBPM-5
WEARING SURFACE REMOVAL AND REPLACEMENT
BUREAU/PUTNAM COUNTY
C-93-016-17**



**CENTERLINE OF STRUCTURE NUMBER 078-0001
OVER THE ILLINOIS RIVER IS THE BUREAU/PUTNAM CO. LINE**

GROSS LENGTH = 4,240.00 FT. = 0.80 MILE
NET LENGTH = 4,240.00 FT. = 0.80 MILE

F.A.I. RTE.	SECTION	COUNTY	TOTAL SHEETS	SHEET NO.
180	(06-3,078-1)MBPM-5	BUREAU/PUTNAM	7	1
ILLINOIS			CONTRACT NO. 66F87	



RURAL
INTERSTATE
FAI 180 (I-180)
2015

ADT	2500
P. V.	79.8%
S. U.	9.2%
M. U.	11.0%

STATE OF ILLINOIS
DEPARTMENT OF TRANSPORTATION

SUBMITTED March 30 2017
Maichel
REGIONAL ENGINEER

May 12 2017
Maureen M. Addis P.E.
ENGINEER OF DESIGN AND ENVIRONMENT

May 12 2017
David J. ...
DIRECTOR OF PROGRAM DEVELOPMENT

**PRINTED BY THE AUTHORITY
OF THE STATE OF ILLINOIS**

REV

CODE	ITEM	UNIT	TOTAL QUANTITY	CONSTRUCTION CODE	
				MBPM 100% STATE ✓	MBPM 100% STATE ✓
				BRIDGE 0014 ✓	BRIDGE 0014 ✓
				BUREAU CO. ✓ S.N. 078-0001	PUTNAM CO. ✓ S.N. 078-0001
40600290	BITUMINOUS MATERIALS (TACK COAT)	POUND	4325	2272	2053
40600400	MIXTURE FOR CRACKS, JOINTS, AND FLANGEWAYS	TON	6.1	3.2	2.9
40603540	POLYMERIZED HOT-MIX ASPHALT SURFACE COURSE, MIX "D", N70	TON	1380	690	690
44000155	HOT-MIX ASPHALT SURFACE REMOVAL, 1 1/2"	SQ YD	19227	10102	9125
67100100	MOBILIZATION	LSUM	1	0.5	0.5
70100800	TRAFFIC CONTROL AND PROTECTION, STANDARD 701401	LSUM	1	0.5	0.5
70300100	SHORT TERM PAVEMENT MARKING	FOOT	1232	616	616
70300150	SHORT TERM PAVEMENT MARKING REMOVAL	SQ FT	408	204	204
70300220	TEMPORARY PAVEMENT MARKING - LINE 4"	FOOT	12332	6164	6168
70300240	TEMPORARY PAVEMENT MARKING - LINE 6"	FOOT	1542	770	772
• 78003130	PREFORMED PLASTIC PAVEMENT MARKING, TYPE B - LINE 6"	FOOT	1542	770	772
• 78008210	POLYUREA PAVEMENT MARKING TYPE I - LINE 4"	FOOT	12332	6164	6168
• 78100100	RAISED REFLECTIVE PAVEMENT MARKER	EACH	156	78	78
78300200	RAISED REFLECTIVE PAVEMENT MARKER REMOVAL	EACH	156	78	78

RURAL

*SPECIALITY ITEMS

FILE NAME =	USER NAME = woodshank1	DESIGNED - RW	REVISED -	STATE OF ILLINOIS DEPARTMENT OF TRANSPORTATION	SUMMARY OF QUANTITIES	F.A.I. RTE.	SECTION	COUNTY	TOTAL SHEETS	SHEET NO.
p:\11084EB10\HTEC\Illinois.gov\PI00T\Documents\100T Offices\District 3\Projects\0366\DRAWN\0366RW\details.dgn		CHECKED - EP	REVISED -			180	106-3,078-1MBPM-5	BUREAU/PUTNAM	7	3
Default	PLOT SCALE = 100.0000 1/16"	DATE - 2/15/2017	REVISED -			SCALE:	SHEET 1 OF 1 SHEETS	STA.	TO STA.	[ILLINOIS] FED. AID PROJECT

REV

RURAL

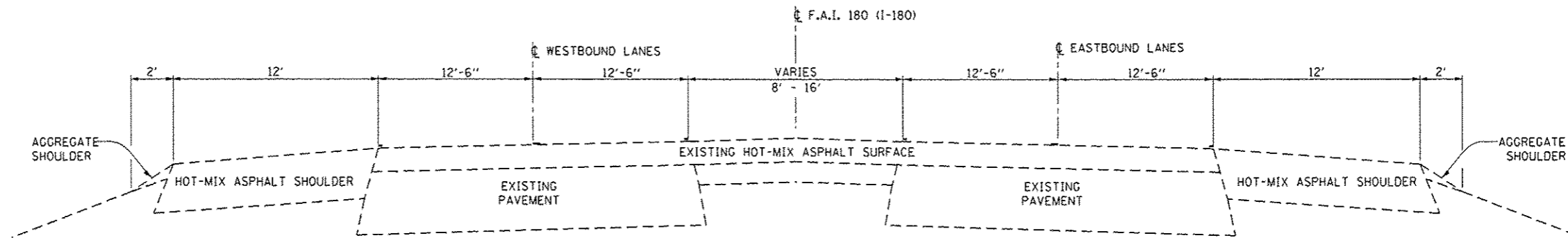
CODE	ITEM	UNIT	TOTAL QUANTITY	CONSTRUCTION CODE	
				MBPM 100% STATE	MBPM 100% STATE
				BRIDGE	BRIDGE
				0014	0014
				BUREAU CO.	PUTNAM CO.
S. N. 078-0001	S. N. 078-0001				
X7830070	GROOVING FOR RECESSED PAVEMENT MARKING 5"	FOOT	12332	6164	6168
X7830074	GROOVING FOR RECESSED PAVEMENT MARKING 7"	FOOT	1542	770	772
Z0030850	TEMPORARY INFORMATION SIGNING	SO FT	21	21	

•SPECIALITY ITEMS

3

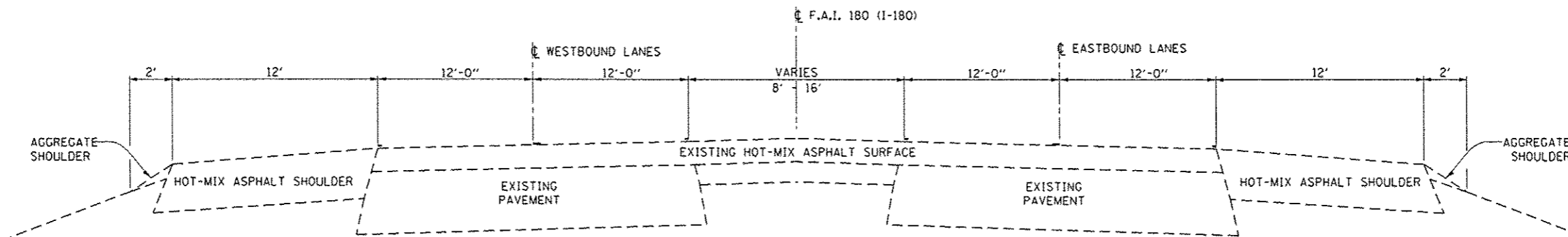
106-3-078-1MBPM-5
 BUREAU/PUTNAM
 CONTRACT NO. 66F87

REV



TYPICAL SECTION NO. 1

STA. 44+50 TO STA. 50+16
MAINLINE ONLY



TYPICAL SECTION NO. 3

STA. 80+99 TO STA. 86+90
MAINLINE ONLY

66F87
 106-3,078-1MBPM-5
 BUREAU/PUTNAM

FILE NAME: p:\11094810\INTEG\Illinois.gov\PI\DOT\Documents\DOT Offices\District 3\Projects\0366\Drawings\0366\RW\Details.dgn USER NAME: woodshank1 PLOT SCALE: 100.0000 1/4" = 1'-0" PLOT DATE: 3/27/2017	DESIGNED - RW CHECKED - EP DATE - 2/15/2017	REVISED - REVISED - REVISED -	STATE OF ILLINOIS DEPARTMENT OF TRANSPORTATION	TYPICAL SECTIONS		F.A.I. RTE. 180	SECTION 106-3,078-1MBPM-5	COUNTY BUREAU/PUTNAM	TOTAL SHEETS 7	SHEET NO. 5
				SCALE: SHEET 1 OF 1 SHEETS STA. TO STA.	ILLINOIS FED. AID PROJECT		CONTRACT NO. 66F87			

SCHEDULE - RESURFACING

LOCATION	HOT-MIX ASPHALT SURFACE REMOVAL 1 1/2"	MIXTURE FOR CRACKS JOINTS AND FLANGWAYS	BITMINOUS MATERIALS TACK COAT	POLYMERIZED HMA SURFACE CSE. MIX D, N70
STA. - STA.	SO YD		POUND	TON
EASTBOUND LANES				
50+16 - 65+57	5051	1.6	1136	424
WESTBOUND LANES				
65+57 - 50+16	5051	1.6	1136	424
TOTALS	10102	3.2	2272	848

SCHEDULE - PAVEMENT MARKERS

LOCATION	RAISED REFLECTIVE PAVEMENT MARKERS (BRIDGE)	RAISED REFLECTIVE PAVEMENT MARKERS REMOVAL
STA. - STA.	SO FT	FOOT
EASTBOUND LANES		
50+16 - 65+67	39	39
WESTBOUND LANES		
65+57 - 50+16	39	39
TOTALS	78	78

SCHEDULE - PAVEMENT MARKING

LOCATION	SHORT-TERM PAVEMENT MARKING	SHORT-TERM PAVEMENT MARKING REMOVAL	TEMPORARY PAVEMENT MARKING LINE 4"	TEMPORARY PAVEMENT MARKING LINE 6"	PREFORMED PLASTIC PAVEMENT MARKING TYPE B LINE 6"	POLYUREA PAVEMENT MARKING TYPE I LINE 4"	GROOVING FOR RECESSED PAVEMENT MARKING 5"	GROOVING FOR RECESSED PAVEMENT MARKING 7"
STA. - STA.	FOOT	SO FT	FOOT	FOOT	FOOT	FOOT	FOOT	FOOT
EASTBOUND LANES								
50+16 - 65+57	308	102	3082	385	385	3082	3082	385
WESTBOUND LANES								
65+57 - 50+16	308	102	3082	385	385	3082	3082	385
TOTALS	616	204	6164	770	770	6164	6164	770

BUREAU COUNTY

SCHEDULE - RESURFACING

LOCATION	HOT-MIX ASPHALT SURFACE REMOVAL 1 1/2"	MIXTURE FOR CRACKS JOINTS AND FLANGWAYS	BITMINOUS MATERIALS TACK COAT	POLYMERIZED HMA SURFACE CSE. MIX D, N70
STA. - STA.	SO YD		POUND	TON
EASTBOUND LANES				
65+57 - 80+99	4071	1.3	916	342
WESTBOUND LANES				
80+99 - 65+57	5054	1.6	1137	425
TOTALS	9125	2.9	2053	767

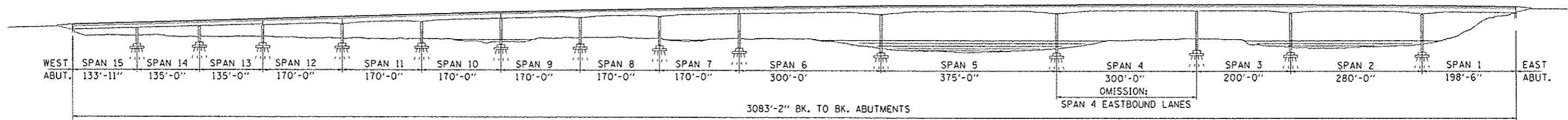
SCHEDULE - PAVEMENT MARKERS

LOCATION	RAISED REFLECTIVE PAVEMENT MARKERS (BRIDGE)	RAISED REFLECTIVE PAVEMENT MARKERS REMOVAL
STA. - STA.	SO FT	FOOT
EASTBOUND LANES		
65+57 - 80+99	39	39
WESTBOUND LANES		
80+99 - 65+57	39	39
TOTALS	78	78

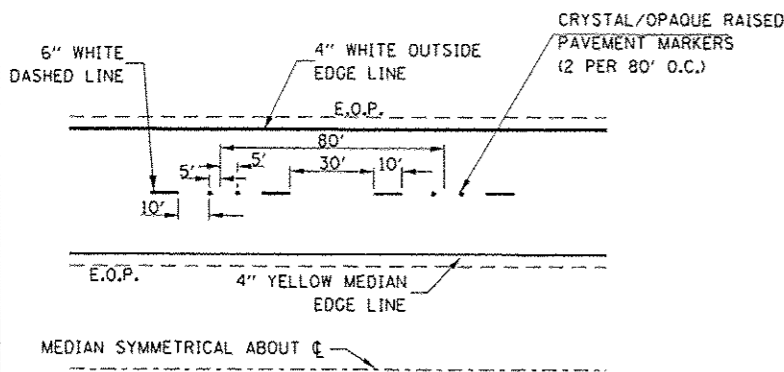
SCHEDULE - PAVEMENT MARKING

LOCATION	SHORT-TERM PAVEMENT MARKING	SHORT-TERM PAVEMENT MARKING REMOVAL	TEMPORARY PAVEMENT MARKING LINE 4"	TEMPORARY PAVEMENT MARKING LINE 6"	PREFORMED PLASTIC PAVEMENT MARKING TYPE B LINE 6"	POLYUREA PAVEMENT MARKING TYPE I LINE 4"	GROOVING FOR RECESSED PAVEMENT MARKING 5"	GROOVING FOR RECESSED PAVEMENT MARKING 7"
STA. - STA.	FOOT	SO FT	FOOT	FOOT	FOOT	FOOT	FOOT	FOOT
EASTBOUND LANES								
65+57 - 80+99	308	102	3084	386	386	3084	3084	386
WESTBOUND LANES								
80+99 - 65+57	308	102	3084	386	386	3084	3084	386
TOTALS	616	204	6168	772	772	6168	6168	772

PUTNAM COUNTY



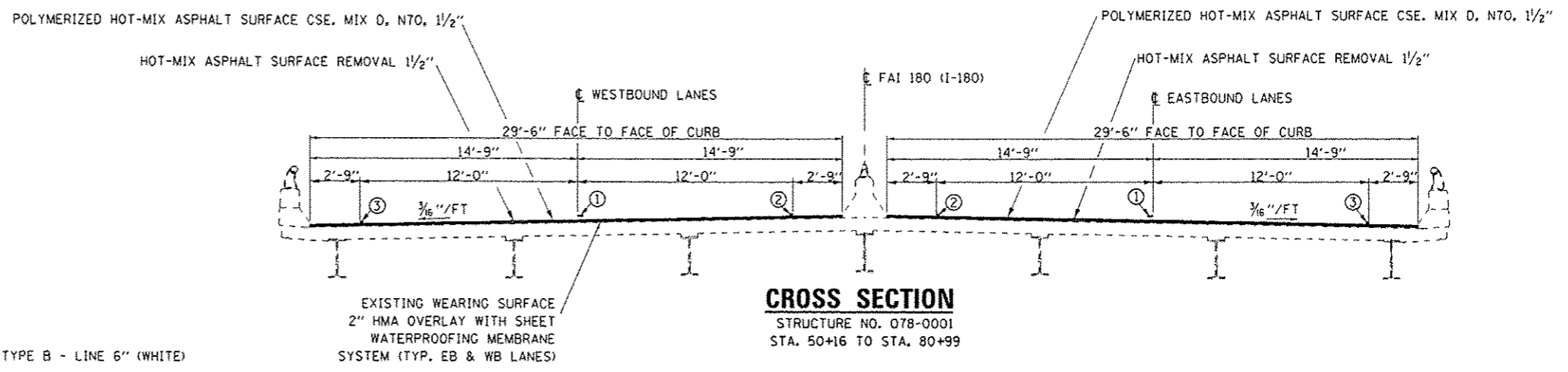
ELEVATION



TYPICAL PAVEMENT MARKINGS

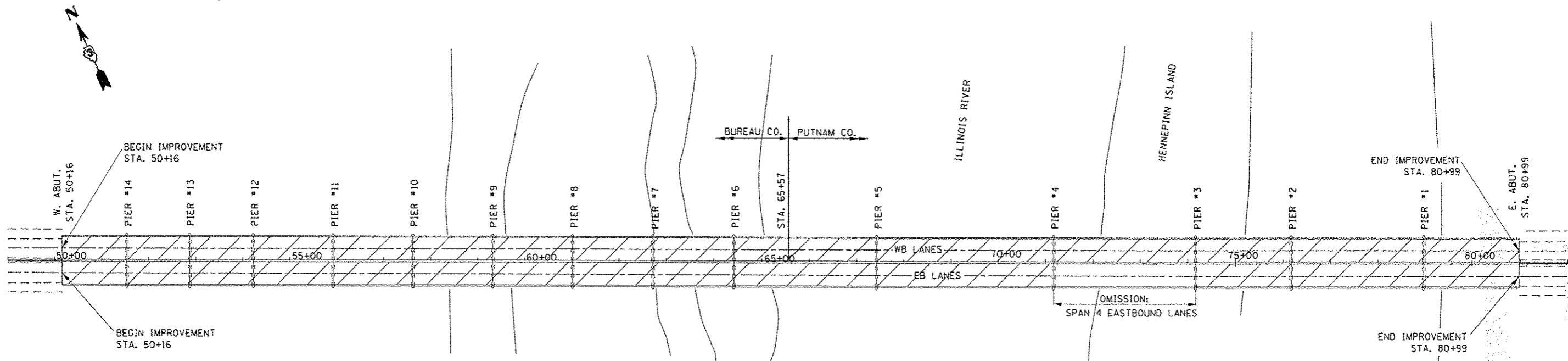
LEGEND

- ① PREFORMED PLASTIC PAVEMENT MARKING, TYPE B - LINE 6" (WHITE)
- ② POLYUREA PAVEMENT MARKING, TYPE 1 - LINE 4" (YELLOW)
- ③ POLYUREA PAVEMENT MARKING, TYPE 1 - LINE 4" (WHITE)



CROSS SECTION

STRUCTURE NO. 078-0001
STA. 50+16 TO STA. 80+99



PLAN

HMA SURFACE REMOVAL 1 1/2"
POLYMERIZED HMA SURFACE CSE, MIX D, N70 (1 1/2")

FILE NAME :	USER NAME : woodshank1	DESIGNED - RW	REVISED -	STATE OF ILLINOIS DEPARTMENT OF TRANSPORTATION	EXISTING GENERAL PLAN AND ELEVATION FOR STRUCTURE NO. 078-0001	F.A.I. RTE.	SECTION	COUNTY	TOTAL SHEETS	SHEET NO.	
Documents\DOT Offices\District 3\Projects\036	Documents\DOT Offices\District 3\Projects\036	DRAWN Data\0366 RW\details.dgn	REVISED -			180	106-3.078-1MBPM-5	BUREAU/PUTNAM	7	7	
Default	PLDT SCALE = 100,0000 1/ in.	CHECKED - EP	REVISED -			CONTRACT NO. 66FB					
	PLDT DATE = 3/27/2017	DATE - 2/15/2017	REVISED -			ILLINOIS FEO. AID PROJECT					