

047

01-17-2020 LETTING ITEM 047

STATE OF ILLINOIS  
DEPARTMENT OF TRANSPORTATION

F.A.P. RTE.	SECTION	COUNTY	TOTAL SHEETS	SHEET NO.
302	(34-2) Q-1	HANCOCK	25	1
		ILLINOIS	CONTRACT NO. 72L28	

INDEX OF SHEETS

- 1 COVER SHEET
- 2 GENERAL NOTES, OUTLET MARKER DETAIL
- 3 - 4 SUMMARY OF QUANTITIES
- 5 TYPICAL SECTIONS
- 6 - 12 SCHEDULE OF QUANTITIES
- 13 - 25 PLAN SHEETS

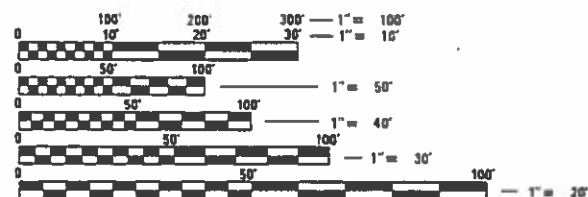
# PROPOSED HIGHWAY PLANS

FAP ROUTE 302 (IL 110/336)  
SECTION (34-2) Q-1  
PROJECT: NHPP-Q82A(054)  
CAPE SEAL FOG SEAL AND MICROSURFACING  
HANCOCK COUNTY

STANDARDS

- 000001-7 701406-12
- 001006 701901-08
- 667001-01 780001-05
- 701201-05 781001-04
- 701400-09

2017 ADT IL 110/ 336 =4035, MU=13.0%, SU=5.8%



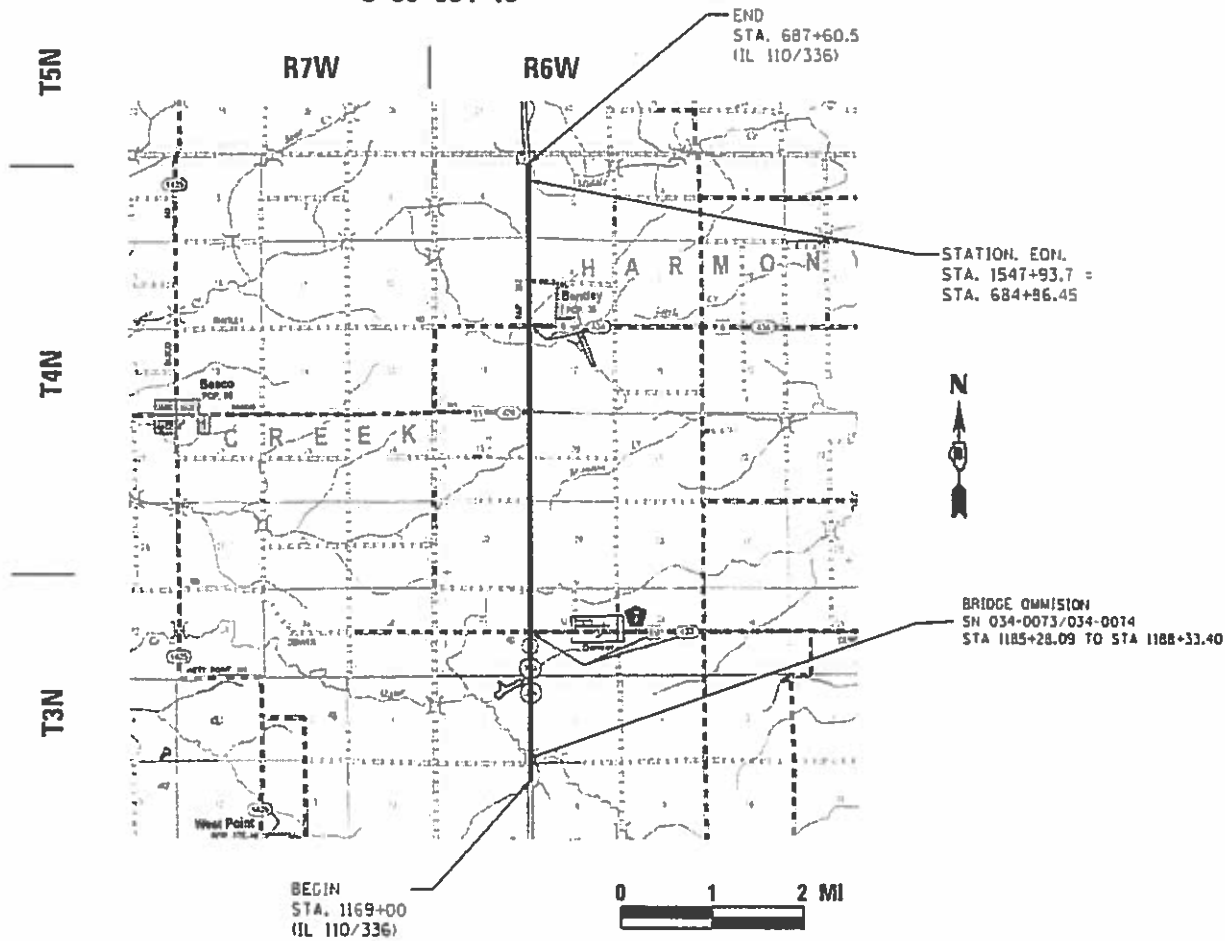
FULL SIZE PLANS HAVE BEEN PREPARED USING STANDARD ENGINEERING SCALES. REDUCED SIZED PLANS WILL NOT CONFORM TO STANDARD SCALES. IN MAKING MEASUREMENTS ON REDUCED PLANS, THE ABOVE SCALES MAY BE USED.

J.U.L.I.E.  
JOINT UTILITY LOCATION INFORMATION FOR EXCAVATION  
1-800-892-0123  
OR 811

PROJECT ENGINEER: JAY EDWARDS (217) 785-0597  
PROJECT MANAGER: AL-BARRAE SHEBIB (217) 524-0946

CONTRACT NO. 72L28

C-96-064-19



STATE OF ILLINOIS  
DEPARTMENT OF TRANSPORTATION

SUBMITTED Oct. 18, 2019

Jeffrey P. Myers REGIONAL ENGINEER

Dec 19 2019

Dec 19 2019

ENGINEER OF DESIGN AND ENVIRONMENT

DIRECTOR OF HIGHWAYS PROJECT IMPLEMENTATION

PRINTED BY THE AUTHORITY  
OF THE STATE OF ILLINOIS

GROSS LENGTH = 38,160.50 FT. = 7.23 MILES  
NET LENGTH = 38,160.50 FT. = 7.23 MILES

**GENERAL NOTES:**

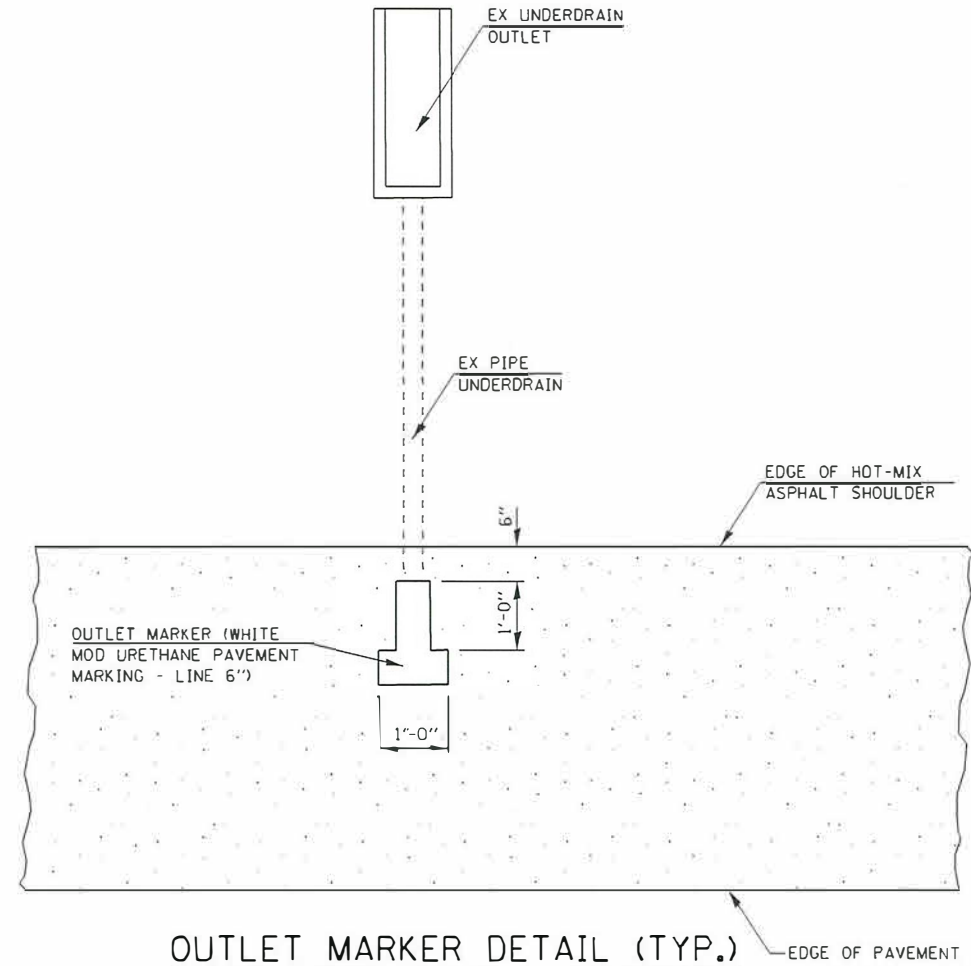
1. IN ADDITION TO FIELD SURVEYS AND AERIAL SURVEYS, PLAN DIMENSIONS AND DETAILS RELATIVE TO THE EXISTING FACILITIES HAVE BEEN TAKEN FROM EXISTING PLANS AND ARE SUBJECT TO CONSTRUCTION VARIATIONS. IT SHALL BE THE CONTRACTOR'S RESPONSIBILITY TO VERIFY SUCH DIMENSIONS AND DETAILS IN THE FIELD. SUCH VARIATIONS SHALL NOT BE A CAUSE FOR ADDITIONAL COMPENSATION DUE TO A CHANGE IN THE SCOPE OF WORK. HOWEVER, THE CONTRACTOR WILL BE PAID FOR THE QUANTITY ACTUALLY FURNISHED AT THE BID PRICE FOR THE WORK.
2. EXISTING PAVEMENT DAMAGED DUE TO THE CONTRACTOR'S OPERATIONS, AND NOT OTHERWISE NECESSARY TO REPLACE, SHALL BE REPLACED AT THE EXPENSE OF THE CONTRACTOR.
3. THE CONTRACTOR SHALL BE AWARE THAT EXISTING CONCRETE PATCHES SHALL BE MILLED AS PART OF THE PROPOSED HMA SURFACE REMOVAL AND NO ADDITIONAL COMPENSATION WILL BE ALLOWED FOR THE MILLING OF THE CONCRETE.
4. THE CONTRACTOR SHALL NOTIFY THE DISTRICT 6 BUREAU OF OPERATIONS AT (217) 785-5312 THREE WEEKS PRIOR TO IMPLEMENTING ANY TRAFFIC CONTROL.
5. THE DISTRICT 6 BUREAU OF OPERATIONS SHALL BE NOTIFIED AT LEAST 14 DAYS PRIOR TO PLACEMENT OF FINAL PAVEMENT MARKINGS (217 785-5312).
6. UNLESS DIRECTED BY THE ENGINEER, PAVEMENT MARKING LINES SHALL NOT BE LAID DIRECTLY OVER A LONGITUDINAL CRACK OR JOINT OR OVER A TAR OR ASPHALT PAINTED LINE. THE EDGE OF A CENTER-LINE OR LANE LINE SHALL BE OFFSET A MINIMUM DISTANCE OF 2" FROM A LONGITUDINAL CRACK OR JOINT. EDGE LINES SHALL BE APPROXIMATELY 2" FROM THE EDGE LINE OF PAVEMENT. SEE SECTION 780 OF THE STANDARD SPECIFICATIONS FOR TRAFFIC CONTROL ITEMS.
7. MIXTURE FOR CRACKS AND FLANGWAYS WILL BE USED TO FILL VOIDS CREATED BY THE RAISED REFLECTIVE MARKING REMOVAL AND OTHER CRACKS, JOINTS, AND DETERIORATED AREAS AS DETERMINED BY THE ENGINEER.
8. WHERE SECTION OR SUBSECTION MONUMENTS ARE ENCOUNTERED, THE ENGINEER SHALL BE NOTIFIED BEFORE SUCH MONUMENTS ARE REMOVED. THE CONTRACTOR SHALL PROTECT AND CAREFULLY PRESERVE ALL MONUMENTS UNTIL AN AUTHORIZED SURVEYOR OR AGENT HAS WITNESSED OR OTHERWISE REFERENCED THEIR LOCATION. THE CONTRACTOR SHALL BE RESPONSIBLE FOR HAVING AN AUTHORIZED SURVEYOR RE-ESTABLISH ANY SECTION OR SUBSECTION MONUMENTS DESTROYED BY HIS OPERATIONS.

**COMMITMENTS**

1. THE RESIDENT ENGINEER SHALL CONTACT STUDIES AND PLANS CONCERNING ANY MAJOR PLAN CHANGE TO MAKE SURE NO PREVIOUS COMMITMENTS (NOT LISTED) WERE MADE AFFECTING THE DESIGN AND TO ALLOW IMPROVED DESIGN FOR FUTURE PROJECTS.

**RATES OF APPLICATION USED TO CALCULATE PLAN QUANTITIES**

BITUMINOUS MATERIALS (FOG SEAL)	0.08 POUNDS/ SQ FT. SHOULDER
	0.05 POUNDS/ SQ FT. MAIN LINE



EXAMINED October 9 20 19  
*Julie P. May*  
 PROGRAM DEVELOPMENT ENGINEER

EXAMINED 10-8- 20 19  
*Cheryl J. Tabell*  
 PROJECT IMPLEMENTATION ENGINEER

DISTRICT SIX  
 EXAMINED 10/14 20 19  
*Robert M. ...*  
 OPERATIONS ENGINEER

MUP#1: D:\ONE...  
 FILE NAME: ...  
 ...

USER NAME = cde ad	DESIGNED - _____	REVISED - _____	<b>STATE OF ILLINOIS                  DEPARTMENT OF TRANSPORTATION</b>	<b>GENERAL NOTES</b>	F.A.P. RTE. 302	SECTION (34-2) Q-1	COUNTY HANCOCK	TOTAL SHEETS 25	SHEET NO. 2		
PLOT SCALE = 20.0000" = 1'	DRAWN - _____	REVISED - _____			SCALE: NTS	SHEET 1 OF 1 SHEETS	STA. 1169+00 TO STA. 687+60.5	CONTRACT NO. 72L28			
PLOT DATE = 10/13/2019	CHECKED - _____	REVISED - _____			ILLINOIS FFD, AND PROJECT						
	DATE - _____	REVISED - _____									

6-01261-0000  
 80% FEDERAL  
 20% STATE  
 ROADWAY  
 0005  
 RURAL

CODE NO.	ITEM	UNIT	TOTAL QUANTITY	
40400118	MICRO-SURFACING, SINGLE PASS	SQ YD	6,588	6,588
40500001	FIBER-MODIFIED ASPHALT CRACK SEALING	FOOT	9,030	9,030
40500061	CAPE SEAL, TYPE II	SQ YD	230,780	230,780
40600290	BITUMINOUS MATERIALS (TACK COAT)	POUND	329	329
40600400	MIXTURE FOR CRACKS, JOINTS, AND FLANGEWAYS	TON	10	10
67000400	ENGINEER'S FIELD OFFICE, TYPE A	CAL MO	9	9
67100100	MOBILIZATION	L SUM	1	1
70100700	TRAFFIC CONTROL AND PROTECTION, STANDARD 701406	L SUM	1	1
70100450	TRAFFIC CONTROL AND PROTECTION, STANDARD 701201	L SUM	1	1
70107025	CHANGEABLE MESSAGE SIGN	CAL DA	50	50
70300100	SHORT TERM PAVEMENT MARKING	FOOT	36,144	36,144
70300150	SHORT TERM PAVEMENT MARKING REMOVAL	SQ FT	4,620	4,620
* 78009000	MODIFIED URETHANE PAVEMENT MARKING- LETTERS AND SYMBOLS	SQ FT	1,498	1,498
* 78009005	MODIFIED URETHANE PAVEMENT MARKING- LINE 5"	FOOT	172,488	172,488

\* SPECIALTY ITEM

REV. - MS

MODEL: Default  
 FILE NAME: P:\uplanroom.dat  
 ILLINOIS.GOV\PIV\DOT\Documents\DOT\_Offices\District\_8\Projects\0672128\CAD\Drawings\CAD\Drawings\0672128-RT-500.dgn

USER NAME = cdxte	DESIGNED -	REVISED -
	DRAWN -	REVISED -
PLOT SCALE = 40.0000 ' / in.	CHECKED -	REVISED -
PLOT DATE = 10/18/2019	DATE -	REVISED -

**STATE OF ILLINOIS  
 DEPARTMENT OF TRANSPORTATION**

**SUMMARY OF QUANTITIES**

SCALE: SHEET 1 OF 2 SHEETS STA. 1169+00 TO STA. 687+60.5

F.A.P. RTE.	SECTION	COUNTY	TOTAL SHEETS	SHEET NO.
302	(34-2) Q-1	HANCOCK	25	3
			CONTRACT NO. 72L28	
			ILLINOIS FED. AID PROJECT	

CODE NO.	ITEM	UNIT	TOTAL QUANTITY	6-01261-0000
				80% FEDERAL 20% STATE ROADWAY 0005 RURAL
* 78009006	MODIFIED URETHANE PAVEMENT MARKING- LINE 6"	FOOT	7,996	7,996
* 78009008	MODIFIED URETHANE PAVEMENT MARKING- LINE 8"	FOOT	1,541	1,541
* 78009012	MODIFIED URETHANE PAVEMENT MARKING- LINE 12"	FOOT	496	496
* 78009024	MODIFIED URETHANE PAVEMENT MARKING- LINE 24"	FOOT	232	232
* 78100100	RAISED REFLECTIVE PAVEMENT MARKER	EACH	948	948
78300200	RAISED REFLECTIVE PAVEMENT MARKER REMOVAL	EACH	948	948
X0300010	BITUMINOUS MATERIALS (FOG SEAL)	POUND	199,296	199,296
X0320157	CLEANING UNDERDRAIN OUTLETS	EACH	278	278
X0322279	OUTLET MARKERS	EACH	278	278
X6015015	REMOVE AND REPLACE CONCRETE HEADWALLS FOR PIPE UNDERDRAINS	EACH	10	10
Z0004542	HOT-MIX ASPHALT REMOVAL (SPECIAL)	SQ YD	230,780	230,780
Ø Z0076600	TRAINEES	HOUR	500	500
Z0049799	PROTECT RESET SURVEY MARKERS	EACH	5	5
Ø Z0076604	TRAINEES TRAINING PROGRAM GRADUATE	HOUR	500	500

\* SPECIALTY ITEM

Ø 0042

REV. - MS

MODEL: Default  
FILE: Main1 - P:\uplanroom.dat\illinois.gov\PIWDOT\Documents\DOT\_Offices\District\_8\Projects\0672L28\CADD\Drawings\0672L28-RT-500.dgn

USER NAME = cjs/erad	DESIGNED - _____	REVISED - _____
	DRAWN - _____	REVISED - _____
PLOT SCALE = 39.9998 ' / in.	CHECKED - _____	REVISED - _____
PLOT DATE = 10/18/2019	DATE - _____	REVISED - _____

**STATE OF ILLINOIS  
DEPARTMENT OF TRANSPORTATION**

**SUMMARY OF QUANTITIES**

SCALE: \_\_\_\_\_ SHEET 2 OF 2 SHEETS STA. 1169+00 TO STA. 687+60.5

F.A.P. RTE.	SECTION	COUNTY	TOTAL SHEETS	SHEET NO.
302	(34-2) Q-1	HANCOCK	25	4
CONTRACT NO. 72L28			ILLINOIS FED. AID PROJECT	







**SHOULDERS BITUMINOUS FOG SEAL SCHEDULE (1 OF 3)**

DIRECTION	LENGTH (FT)	WIDTH (FT)	BEGIN STATION	END STATION	AREA (SQ FT)	X0300010
						BITUMINOUS MATERIALS (FOG SEAL)
						POUND
NB	636.3	6	1169+00	1175+36.3	3,817.8	305.4
	226.6	VARIES	1175+36.3	1177+62.9	1,323.2	105.9
	241.3	4	1177+62.9	1180+04.2	965.2	77.2
	8699.3	10	1169+00	1255+99.3	86,993.0	6,959.4
	2363.3	6	1181+58.6	1205+21.9	14,179.8	1,134.4
	309.2	VARIES	1205+21.9	1208+31.1	1,288.9	103.1
	207.3	4	1208+31.1	1210+38.4	829.2	66.3
	1441.2	6	1212+02.2	1226+43.4	8,647.2	691.8
	285.7	VARIES	1226+43.4	1229+29.1	1,192.0	95.4
	176.0	4	1229+29.1	1231+05.1	704.0	56.3
	2452.0	6	1232+63.4	1257+15.4	14,712.0	1,177.0
	157.7	VARIES	1255+99.3	1257+57	869.1	69.5
	203.3	VARIES	1257+15.4	1259+18.7	848.5	67.9
	388.8	4	1257+57.	1261+45.8	1,555.2	124.4
	235.8	4	1259+18.7	1261+54.5	943.2	75.5
	129.1	4	1261+45.8	1262+07.9	516.4	41.3
	43.9	VARIES	1262+35.1	1262+79	562.8	45.0
	10031.6	10	1262+79	1363+10.6	100,316.0	8,025.3
	2054.3	6	1263+44.7	1283+99	12,325.8	986.1
	208.9	VARIES	1283+99	1286+07.9	872.1	69.8
	230.3	4	1286+07.9	1288+38.2	921.2	73.7
	2078.8	6	1290+07.7	1310+87	12,472.8	997.8
	248.9	VARIES	1310+87	1313+35.9	1,040.6	83.2
	145.9	4	1313+35.9	1314+81.8	583.6	46.7
	2128.9	6	1316+46.1	1337+75	12,773.4	1,021.9
	256.5	VARIES	1337+75	1340+31.5	1,070.0	85.6
	2134.9	6	1343+78	1365+12.9	12,809.4	1,024.8
	205.8	VARIES	1363+10.6	1365+16.4	1,132.4	90.6
	206.3	VARIES	1365+12.9	1367+19.2	865.7	69.3
	433.2	4	1365+16.4	1369+49.6	1,732.8	138.6
	196.9	4	1367+19.2	1369+16.1	787.6	63.0
	65.7	4	1369+49.6	1369+82.	262.8	21.0
	46.6	VARIES	1370+04.9	1370+51.5	432.9	34.6
	1946.5	10	1370+51.5	1389+98	19,465.0	1,557.2
	2125.5	6	1370+83.2	1392+08.7	12,753.0	1,020.2
	242.9	VARIES	1389+98	1392+40.9	1,336.9	107.0
	441.2	VARIES	1392+08.7	1396+49.9	1,803.3	144.3
	415.6	4	1392+40.9	1396+56.5	1,662.4	133.0
	77.4	4	1396+56.5	1397+01.4	309.4	24.8
	34.6	VARIES	1397+23.2	1397+57.8	346.8	27.7
	4651.7	10	1397+57.8	1444+09.5	46,517.0	3,721.4
	1480.7	6	1397+99.8	1412+80.5	8,884.2	710.7
	223.3	VARIES	1412+80.5	1415+03.8	931.6	74.5
	192.5	4	1415+03.8	1416+96.3	770.0	61.6
	2723.4	6	1418+46.3	1445+69.7	16,340.4	1,307.2
	287.8	VARIES	1444+09.5	1446+97.3	1,587.4	127.0
	217.5	VARIES	1445+69.7	1447+87.2	907.6	72.6
	321.9	4	1446+97.3	1450+19.2	1,287.6	103.0
	221.6	4	1447+87.2	1450+08.8	886.4	70.9
	68.5	4	1450+19.2	1450+65.2	274.0	21.9
	54.1	VARIES	1450+96.3	1451+50.4	412.6	33.0
	1994.7	10	1451+50.4	1471+45.1	19,947.0	1,595.8
	2128.7	6	1451+68	1472+96.7	12,772.2	1,021.8
	196.1	VARIES	1471+45.1	1473+41.2	965.2	77.2
	201.6	VARIES	1472+96.7	1474+98.3	841.3	67.3
	432.4	4	1473+41.2	1477+73.6	1,729.6	138.4
	264.7	4	1474+98.3	1477+63	1,058.8	84.7
	73.6	4	1477+73.6	1478+15.6	294.4	23.6
	47.2	VARIES	1478+40.1	1478+87.3	395.5	31.6
	6906.4	10	1478+87.3	1547+93.7	69,064.0	5,525.1
	3855.4	6	1479+18.6	1517+74	23,132.4	1,850.6
	249.5	VARIES	1517+74	1520+23.5	1,040.8	83.3
	168.2	4	1520+23.5	1521+91.7	672.8	53.8
	2435.2	6	1523+58.5	1547+93.7	14,611.2	1,168.9
	274.0	6	684+86.5	687+60.5	1,644.0	131.5
	274.0	10	684+86.5	687+60.5	2,740.0	219.2
<b>SUBTOTAL</b>						<b>45,419</b>

**SHOULDERS BITUMINOUS FOG SEAL SCHEDULE (2 OF 3)**

DIRECTION	LENGTH (FT)	WIDTH (FT)	BEGIN STATION	END STATION	AREA (SQ FT)	X0300010
						BITUMINOUS MATERIALS (FOG SEAL)
						POUND
SB	1109.0	6	1169+00	1180+09	6,654.0	532.3
	1109.0	10	1169+00	1180+09	11,090.0	887.2
	36.3	VARIES	1180+09.	1180+45.3	310.3	24.8
	65.3	4	1180+45.3	1180+70.4	261.2	20.9
	70.5	4	1180+92.4	1181+33.3	282.0	22.6
	240.0	4	1181+33.3	1183+73.3	960.0	76.8
	230.9	VARIES	1183+73.3	1186+04.2	1,575.0	126.0
	199.4	4	1181+70.6	1183+70	797.6	63.8
	234.2	VARIES	1183+70	1186+04.2	1,408.0	112.6
	2397.4	6	1186+04.2	1210+01.6	14,384.4	1,150.8
	2424.3	10	1186+04.2	1210+28.5	24,243.0	1,939.4
	27.5	VARIES	1210+28.5	1210+56	189.1	15.1
	71.0	4	1210+56	1210+88.4	284.0	22.7
	72.1	4	1211+09.3	1211+54.3	288.4	23.1
	199.1	4	1211+54.3	1213+53.4	796.4	63.7
	232.1	4	1211+84.3	1214+16.4	928.4	74.3
	284.8	VARIES	1213+53.4	1216+38.2	1,566.2	125.3
	265.6	VARIES	1214+16.4	1216+82	1,107.7	88.6
	4533.2	10	1216+38.2	1261+71.4	45,332.0	3,626.6
	1399.9	6	1216+82	1230+81.9	8,399.4	672.0
	184.3	4	1232+96.4	1234+80.7	737.2	59.0
	237.7	VARIES	1234+80.7	1237+18.4	991.2	79.3
	2413.4	6	1237+18.4	1261+31.8	14,480.4	1,158.4
	41.5	VARIES	1261+71.4	1262+12.9	379.4	30.4
	69.8	4	1262+37.3	1262+71.2	279.2	22.3
	294.2	4	1262+71.2	1265+65.4	1,176.8	94.1
	246.9	4	1263+22.2	1265+69.1	987.6	79.0
	264.3	VARIES	1265+65.4	1268+29.7	1,270.5	101.6
	207.9	VARIES	1265+69.1	1267+77	867.3	69.4
	2064.4	6	1267+77	1288+41.4	12,386.4	990.9
	2040.7	10	1268+29.7	1288+70.4	20,407.0	1,632.6
	41.6	VARIES	1288+70.4	1289+12	359.5	28.8
	65.2	4	1289+35	1289+71.5	260.8	20.9
	326.6	4	1289+71.5	1292+98.1	1,306.4	104.5
	236.4	4	1290+30	1292+66.4	945.6	75.6
	284.5	VARIES	1292+66.4	1295+50.9	1,185.9	94.9
	231.5	VARIES	1292+98.1	1295+29.6	1,274.2	101.9
	4710.1	10	1295+29.6	1342+39.7	47,101.0	3,768.1
	1926.3	6	1295+50.9	1314+77.2	11,557.8	924.6
	216.2	4	1316+47.4	1318+63.6	864.8	69.2
	192.6	VARIES	1318+63.6	1320+56.2	804.1	64.3
	2165.3	6	1320+56.2	1342+21.5	12,991.8	1,039.3
	45.2	VARIES	1342+39.7	1342+84.9	406.9	32.6
	75.2	4	1343+08.3	1343+47.8	300.8	24.1
	207.5	4	1343+47.8	1345+55.3	830.0	66.4
	178.0	4	1343+95.9	1345+73.9	712.0	57.0
	337.3	VARIES	1345+55.3	1348+92.6	1,855.2	148.4
	237.2	VARIES	1345+73.9	1348+11.1	989.0	79.1
	2082.6	6	1348+11.1	1368+93.7	12,495.6	999.6
	2052.8	10	1348+92.6	1369+45.4	20,528.0	1,642.2
	39.0	VARIES	1369+45.4	1369+84.4	476.5	38.1
	71.6	4	1370+05.6	1370+40.1	286.4	22.9
	324.3	4	1370+40.1	1373+64.4	1,297.2	103.8
	275.7	4	1370+77.4	1373+53.1	1,102.8	88.2
	196.9	VARIES	1373+53.1	1375+50	822.0	65.8
	314.9	VARIES	1373+64.4	1376+79.3	1,732.9	138.6
	2084.8	6	1375+50.	1396+34.8	12,508.8	1,000.7
	1966.4	10	1376+79.3	1396+45.7	19,664.0	1,573.1
	54.5	VARIES	1396+45.7	1397+00.2	414.8	33.2
	58.2	4	1397+29.9	1397+67.8	232.8	18.6
	321.7	4	1397+67.8	1400+89.5	1,286.8	102.9
	285.7	4	1397+88.5	1400+74.2	1,142.8	91.4
	263.0	VARIES	1400+74.2	1403+37.2	1,097.6	87.8
	210.5	VARIES	1400+89.5	1403+00	1,159.0	92.7
	4715.6	10	1403+00	1450+15.6	47,156.0	3,772.5
	1349.0	6	1403+37.2	1416+86.2	8,094.0	647.5
<b>SUBTOTAL</b>						<b>31,205</b>

MODEL: Default  
FILE: \\s:\pub\lhamon.d\at\illinois.gov\PROJECTS\DOT Documents\DOT Office\Drawings\Projects\0672L28\sh-ht-sched.tbl

USER NAME = coxte	DESIGNED -	REVISED -
PLOT SCALE = 40,0000 ' / in.	DRAWN -	REVISED -
PLOT DATE = 10/18/2019	CHECKED -	REVISED -
	DATE -	REVISED -

**STATE OF ILLINOIS  
DEPARTMENT OF TRANSPORTATION**

**SCHEDULE OF QUANTITIES**

SCALE: SHEET 2 OF 7 SHEETS STA. 1169+00 TO STA. 687+60.5

F.A.P. RTE. 302	SECTION (34-2) Q-1	COUNTY HANCOCK	TOTAL SHEETS 25	SHEET NO. 7
CONTRACT NO. 72L28				
ILLINOIS		FED. AID PROJECT		





PAVEMENT MARKING LINE 5" SCHEDULE (1 OF 3)					
DESCRIPTION	START STATION	END STATION	LENGTH (FT)	COLOR	78009005
					MODIFIED URETHANE PAVEMENT MARKING- LINE 5" FOOT
INTERSECTION	1180+04.2	1180+44.5	89.7	YELLOW	92.8
	1181+19.4	1181+70.6	100.7	YELLOW	100.7
	1210+01.7	1210+65.3	101.7	YELLOW	130.3
	1211+38.9	1212+02.2	120.7	YELLOW	120.7
	1261+31.8	1261+80.7	88.6	YELLOW	88.6
	1262+58	1263+44.6	160.4	YELLOW	160.4
	1288+38.1	1288+82.9	97.9	YELLOW	97.9
	1289+61.1	1290+30.1	127.8	YELLOW	127.8
	1342+21.6	1342+64.9	95.1	YELLOW	95.1
	1368+93.7	1369+53.1	108.8	YELLOW	108.8
NB LANES	1370+33	1370+83.5	107.4	YELLOW	107.4
	1169+00	1256+00.3	8700.3	WHITE	8,700.3
	1169+00	1547+93.7	37893.7	WHITE	9,473.4
	1169+00	1175+36.3	636.3	YELLOW	636.3
	1175+36.3	1177+62.9	226.9	YELLOW	226.9
	1177+62.9	1180+04.2	241.3	YELLOW	241.3
	1181+57.5	1205+21.4	2363.9	YELLOW	2,363.9
	1205+21.4	1208+30.9	309.6	YELLOW	309.6
	1208+30.9	1210+38	207.3	YELLOW	207.3
	1212+02.2	1257+15.4	4513.2	YELLOW	4,513.2
	1256+00.3	1257+58.3	158.5	WHITE	158.5
	1257+15.4	1259+18.7	203.7	YELLOW	203.7
	1257+58.3	1261+47.4	389.1	WHITE	389.1
	1259+18.7	1261+54.5	235.8	YELLOW	235.8
	1261+47.4	1262+11.3	132.0	WHITE	132.0
	1262+24.5	1262+24.5	81.8	YELLOW	163.5
	1262+37.7	1262+79	132.1	WHITE	132.1
	1262+78	1363+10.6	10032.6	WHITE	10,032.6
	1263+44.6	1283+98.9	2054.3	YELLOW	2,054.3
	1283+98.9	1286+07.8	209.3	YELLOW	209.3
	1286+07.8	1288+38.1	230.3	YELLOW	230.3
	1290+07.7	1337+75	4767.3	YELLOW	4,767.3
	1337+75	1340+31.5	256.9	YELLOW	256.9
	1340+31.5	1342+25.4	193.9	YELLOW	193.9
	1343+69.8	1365+12.3	2142.5	YELLOW	2,142.5
	1363+10.6	1365+16.4	206.2	WHITE	206.2
	1365+12.3	1367+19.1	207.3	YELLOW	207.3
	1365+12.3	1369+50.2	437.9	WHITE	437.9
	1367+19.1	1369+16.1	197.0	YELLOW	197.0
	1369+50.2	1369+84.3	68.5	WHITE	68.5
	1369+95.3	1369+95.3	32.4	YELLOW	64.8
	1370+07.3	1370+52.5	87.1	WHITE	87.1
	1370+83.5	1392+09.1	2125.6	YELLOW	2,125.6
	1370+52.3	1389+98.7	1946.4	WHITE	1,946.4
	1389+98.7	1392+41.7	243.0	WHITE	243.0
	1392+09.1	1394+45.2	236.1	YELLOW	236.1
	1397+58.5	1444+09.5	4651.0	WHITE	4,651.0
	1398+00.1	1445+69.7	4769.6	YELLOW	4,769.6
	1444+09.5	1450+19.7	610.2	WHITE	610.2
	1445+69.9	1450+08.8	438.9	YELLOW	438.9
1450+19.7	1450+66.1	72.5	WHITE	72.5	
1450+80.6	1450+80.6	34.1	YELLOW	68.2	
1450+95.1	1451+50.2	91.7	WHITE	91.7	
1451+50.2	1471+44.8	1994.6	WHITE	1,994.6	
1451+67.8	1472+96.6	2128.8	YELLOW	2,128.8	
1471+44.8	1477+73.4	628.6	WHITE	628.6	
1472+96.6	1477+63.	466.4	YELLOW	466.4	
1477+73.4	1478+16.1	78.1	WHITE	78.1	
1478+28	1478+28	37.8	YELLOW	75.6	
1478+39	1478+87	93.3	WHITE	93.3	
1478+87	1547+93.7	6906.8	WHITE	6,906.8	
1479+14	1547+93.7	6879.6	YELLOW	6,879.6	
684+86.5	687+60.5	274.0	WHITE	342.5	
684+86.5	687+60.5	274.0	YELLOW	274.0	
SUBTOTAL					85,595

PAVEMENT MARKING LINE 5" SCHEDULE (2 OF 3)					
DESCRIPTION	START STATION	END STATION	LENGTH (FT)	COLOR	78009005
					MODIFIED URETHANE PAVEMENT MARKING- LINE 5" FOOT
SB	1169+00.	1180+09.	1109.0	WHITE	1,109.0
	1169+00.	1180+09.	1109.0	YELLOW	1,109.0
	1169+00.	1547+93.7	37893.7	WHITE	9,473.4
	1180+09.	1180+70.4	61.4	WHITE	106.8
	1180+82.7	1180+82.7	38.2	YELLOW	76.3
	1180+92.4	1181+33.3	73.3	WHITE	73.3
	1181+33	1183+73.3	240.0	WHITE	240.0
	1181+70.6	1183+70.	199.4	YELLOW	199.4
	1183+70.	1186+04.8	234.9	YELLOW	234.9
	1183+73.3	1186+05.1	231.8	WHITE	231.8
	1186+04.8	1210+01.7	2396.9	YELLOW	2,396.9
	1186+05.1	1210+43.9	2438.8	WHITE	2,438.8
	1210+43.9	1210+89.4	89.3	WHITE	89.3
	1211+04.1	1211+04	34.4	YELLOW	68.8
	1211+09	1211+54.3	74.8	WHITE	74.8
	1211+54.3	1213+53.5	199.2	WHITE	199.2
	1211+84.3	1214+16	232.1	YELLOW	232.1
	1213+54	1216+38	285.0	WHITE	285.0
	1214+16	1216+82.	265.9	YELLOW	265.9
	1216+38.2	1261+70.4	4532.2	WHITE	4,532.2
	1216+82.	1260+31.8	4349.8	YELLOW	4,349.8
	1261+70.4	1262+10.4	88.4	WHITE	88.4
	1262+24.5	1262+24.5	39.6	YELLOW	79.1
	1262+34.8	1262+71.4	72.6	WHITE	72.6
	1262+71.4	1265+65.4	294.0	WHITE	294.0
	1263+22.2	1265+69.1	246.9	YELLOW	246.9
	1265+65.4	1268+29.7	264.7	WHITE	264.7
	1265+69.1	1267+77.	208.2	YELLOW	208.2
	1267+77.	1297+41.4	2964.4	YELLOW	2,964.4
	1268+29.7	1297+70	2940.7	WHITE	2,940.7
	1288+70	1289+12.	84.1	WHITE	84.1
	1289+23.	1289+23.	35.5	YELLOW	35.5
	1289+35.	1289+71.5	68.0	WHITE	68.0
	1289+71.5	1292+98.1	326.6	WHITE	326.6
	1290+30	1292+66.4	236.3	YELLOW	236.3
	1292+66.4	1295+51	285.0	YELLOW	285.0
	1292+98.1	1295+29.6	231.8	WHITE	231.8
	1295+29.6	1342+39.2	4709.6	WHITE	4,709.6
	1295+51.1	1342+21.6	4670.5	YELLOW	4,670.5
	1342+39.2	1342+84.3	95.2	WHITE	95.2
1342+95.2	1342+95.2	41.9	YELLOW	83.8	
1343+07.7	1343+47.5	78.1	WHITE	78.1	
1343+26.2	1368+93.7	2567.5	YELLOW	2,567.5	
1343+47.5	1345+55.	207.5	WHITE	207.5	
1345+55.	1348+92.3	337.5	WHITE	337.5	
1348+92.3	1369+56.3	2064.0	WHITE	2,064.0	
1369+56.3	1369+83.8	76.2	WHITE	76.2	
1369+95.3	1369+95.3	38.8	YELLOW	77.7	
1370+05.	1370+44.8	74.5	WHITE	74.5	
1370+44.8	1373+64.	319.2	WHITE	319.2	
1370+77.1	1373+52.9	275.8	YELLOW	275.8	
1373+51.5	1376+79.3	327.8	WHITE	327.8	
1373+52.9	1375+49.7	196.8	YELLOW	196.8	
1375+49.7	1396+39.7	2090.0	YELLOW	2,090.0	
1376+79.3	1396+45.8	1966.5	WHITE	1,966.5	
1396+45.8	1397+01.1	91.7	WHITE	91.7	
1397+14.	1397+14.	30.2	YELLOW	60.4	
1397+28.9	1397+66.9	62	WHITE	62.0	
1397+66.9	1400+89.2	322.3	WHITE	322.3	
1397+79.6	1403+36.8	557.2	YELLOW	557.2	
1402+99.9	1450+15.6	4715.7	WHITE	4,715.7	
1403+36.8	1450+01.9	4665.1	YELLOW	4,665.1	
1450+15.6	1450+71.7	94	WHITE	94.0	
1450+83.1	1450+83.1	28.5	YELLOW	57.0	
SUBTOTAL					67,057

MODEL: Default  
 FILE: \\s:\pub\baron\baron.dwg  
 PROJECT: 0672L28\CADD\DATA\CAD\sheet0672L28-1h-schedule.dgn

USER NAME = coxte	DESIGNED -	REVISED -
DRAWN -	REVISOR -	REVISOR -
PLOT SCALE = 40.0000 ' / in.	CHECKED -	REVISOR -
PLOT DATE = 10/18/2019	DATE -	REVISOR -

**STATE OF ILLINOIS  
DEPARTMENT OF TRANSPORTATION**

SCHEDULE OF QUANTITIES			
SCALE:	SHEET 5	OF 7	SHEETS
STA. 1169+00	TO STA. 687+60.5		

F.A.P. RTE.	SECTION	COUNTY	TOTAL SHEETS	SHEET NO.
302	(34-2) Q-1	HANCOCK	25	10
CONTRACT NO. 72L28				
ILLINOIS FED. AID PROJECT				







MODEL: Default  
FILE: I:\data\proj\p1184\1184.dwg  
PROJECTS\DOT\Documents\DOT Office\Drawings\1184\1184.dwg



EXIST. CURVE 436  
 PI STA. = 1177+11.21  
 $\Delta = 1^\circ 18' 55''$  (RT)  
 $D = 0^\circ 15' 43''$   
 $R = 21,868.34'$   
 $T = 251.02'$   
 $L = 502.02'$   
 $E = 1.44'$   
 $e = \text{-----}$   
 $T.R. = \text{-----}$   
 $S.E. \text{ RUN} = \text{-----}$   
 P.C. STA. = 1174+60.19  
 P.T. STA. = 1179+62.20

- ① PROP. MODIFIED URETHANE PAVEMENT MARKING (WHITE) - LINE 5"
- ② PROP. MODIFIED URETHANE PAVEMENT MARKING (SKIP-DASH WHITE) - LINE 5"
- ③ PROP. MODIFIED URETHANE PAVEMENT MARKING (DOTTED WHITE) - LINE 6"
- ④ PROP. MODIFIED URETHANE PAVEMENT MARKING (YELLOW) - LINE 5"
- ⑤ PROP. MODIFIED URETHANE PAVEMENT MARKING (DOUBLE YELLOW) - LINE 5"
- ⑥ PROP. MODIFIED URETHANE PAVEMENT MARKING (WHITE) - LINE 6"
- ⑦ PROP. MODIFIED URETHANE PAVEMENT MARKING (WHITE) - LINE 8"
- ⑧ PROP. MODIFIED URETHANE PAVEMENT MARKING (WHITE) - LINE 12"
- ⑨ PROP. MODIFIED URETHANE PAVEMENT MARKING (WHITE) - LINE 24"
- ⑩ PROP. MODIFIED URETHANE PAVEMENT MARKING (WHITE) - LETTERS & SYMBOLS

BRIDGE OMISSION  
 SN 034-0073/034-0074  
 STA 1188+33.40 TO STA 1185+28.09

PI STA 1185+22.32

**STATE OF ILLINOIS  
 DEPARTMENT OF TRANSPORTATION**

**PLAN SHEET**

USER NAME = cisterad	DESIGNED -	REVISED -
PLOT SCALE = 100.0099' / in.	DRAWN -	REVISED -
PLOT DATE = 11/18/2019	CHECKED -	REVISED -
	DATE -	REVISED -

SCALE:	SHEET 1	OF 13 SHEETS	STA. 1169+00	TO STA. 1199+00
--------	---------	--------------	--------------	-----------------

F.A.P. RTE.	SECTION	COUNTY	TOTAL SHEETS	SHEET NO.
302	(34-2) Q-1	HANCOCK	25	13
ILLINOIS FED. AID PROJECT			CONTRACT NO. 72L28	



MODEL: Default  
 FILE: h:\a\c\p\pub\barroom.dwg  
 PROJECT: 0672L28\CADD\data\CAD\sheet\plan1.dgn

MATCHLINE STA 1199+00.00

MATCHLINE STA 1214+00.00

MATCHLINE STA 1214+00.00

MATCHLINE STA 1229+00.00



- ① PROP. MODIFIED URETHANE PAVEMENT MARKING (WHITE) - LINE 5"
- ② PROP. MODIFIED URETHANE PAVEMENT MARKING (SKIP-DASH WHITE) - LINE 5"
- ③ PROP. MODIFIED URETHANE PAVEMENT MARKING (DOTTED WHITE) - LINE 6"
- ④ PROP. MODIFIED URETHANE PAVEMENT MARKING (YELLOW) - LINE 5"
- ⑤ PROP. MODIFIED URETHANE PAVEMENT MARKING (DOUBLE YELLOW) - LINE 5"
- ⑥ PROP. MODIFIED URETHANE PAVEMENT MARKING (WHITE) - LINE 6"
- ⑦ PROP. MODIFIED URETHANE PAVEMENT MARKING (WHITE) - LINE 8"
- ⑧ PROP. MODIFIED URETHANE PAVEMENT MARKING (WHITE) - LINE 12"
- ⑨ PROP. MODIFIED URETHANE PAVEMENT MARKING (WHITE) - LINE 24"
- ⑩ PROP. MODIFIED URETHANE PAVEMENT MARKING (WHITE) - LETTERS & SYMBOLS

USER NAME = cslterad	DESIGNED -	REVISED -
	DRAWN -	REVISED -
PLOT SCALE = 100,0000' / in.	CHECKED -	REVISED -
PLOT DATE = 11/18/2019	DATE -	REVISED -

**STATE OF ILLINOIS  
 DEPARTMENT OF TRANSPORTATION**

**PLAN SHEET**  
 SCALE: SHEET 2 OF 13 SHEETS STA. 1199+00 TO STA. 1229+00

F.A.P. RTE. 302	SECTION (34-2) Q-1	COUNTY HANCOCK	TOTAL SHEETS 25	SHEET NO. 14
ILLINOIS FED. AID PROJECT			CONTRACT NO. 72L28	

MODEL: Default  
 FILE: h:\a\c\p\pub\barroom.dwg  
 PROJECT: RWIDOT\Documents\DOT\_Offices\Director\Projects\0672\28\CADD\data\CAD\sheet318a1.dgn

MATCHLINE STA 1229+00.00

MATCHLINE STA 1244+00.00

MATCHLINE STA 1244+00.00

MATCHLINE STA 1259+00.00



- ① PROP. MODIFIED URETHANE PAVEMENT MARKING (WHITE) - LINE 5"
- ② PROP. MODIFIED URETHANE PAVEMENT MARKING (SKIP-DASH WHITE) - LINE 5"
- ③ PROP. MODIFIED URETHANE PAVEMENT MARKING (DOTTED WHITE) - LINE 6"
- ④ PROP. MODIFIED URETHANE PAVEMENT MARKING (YELLOW) - LINE 5"
- ⑤ PROP. MODIFIED URETHANE PAVEMENT MARKING (DOUBLE YELLOW) - LINE 5"
- ⑥ PROP. MODIFIED URETHANE PAVEMENT MARKING (WHITE) - LINE 6"
- ⑦ PROP. MODIFIED URETHANE PAVEMENT MARKING (WHITE) - LINE 8"
- ⑧ PROP. MODIFIED URETHANE PAVEMENT MARKING (WHITE) - LINE 12"
- ⑨ PROP. MODIFIED URETHANE PAVEMENT MARKING (WHITE) - LINE 24"
- ⑩ PROP. MODIFIED URETHANE PAVEMENT MARKING (WHITE) - LETTERS & SYMBOLS

USER NAME = csterad	DESIGNED -	REVISED -
	DRAWN -	REVISED -
PLOT SCALE = 100,0000' / in.	CHECKED -	REVISED -
PLOT DATE = 11/18/2019	DATE -	REVISED -

**STATE OF ILLINOIS  
 DEPARTMENT OF TRANSPORTATION**

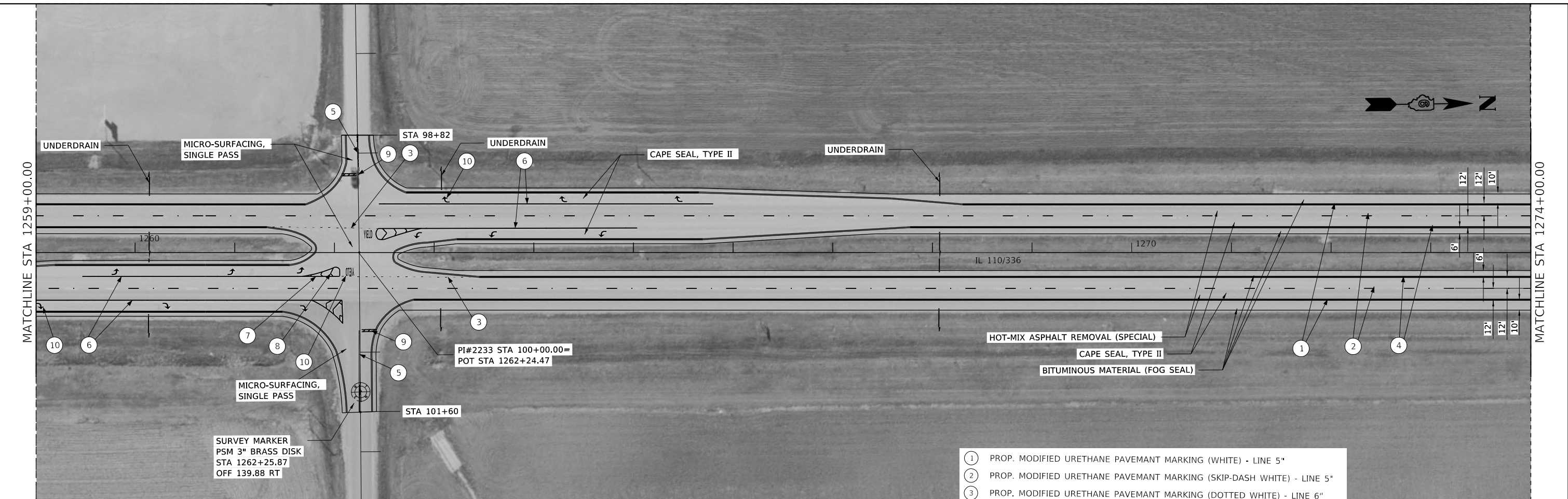
**PLAN SHEET**

SCALE: SHEET 3 OF 13 SHEETS STA. 1229+00 TO STA. 1259+00

F.A.P. RTE. 302	SECTION (34-2) Q-1	COUNTY HANCOCK	TOTAL SHEETS 25	SHEET NO. 15
CONTRACT NO. 72L28			ILLINOIS FED. AID PROJECT	



MODEL: Default  
 FILE: \\nrcs-pub\pub\barroom.dwg  
 PROJECT: \\nrcs-pub\pub\barroom.dwg  
 PROJECT: \\nrcs-pub\pub\barroom.dwg  
 PROJECT: \\nrcs-pub\pub\barroom.dwg



- ① PROP. MODIFIED URETHANE PAVEMENT MARKING (WHITE) - LINE 5"
- ② PROP. MODIFIED URETHANE PAVEMENT MARKING (SKIP-DASH WHITE) - LINE 5"
- ③ PROP. MODIFIED URETHANE PAVEMENT MARKING (DOTTED WHITE) - LINE 6"
- ④ PROP. MODIFIED URETHANE PAVEMENT MARKING (YELLOW) - LINE 5"
- ⑤ PROP. MODIFIED URETHANE PAVEMENT MARKING (DOUBLE YELLOW) - LINE 5"
- ⑥ PROP. MODIFIED URETHANE PAVEMENT MARKING (WHITE) - LINE 6"
- ⑦ PROP. MODIFIED URETHANE PAVEMENT MARKING (WHITE) - LINE 8"
- ⑧ PROP. MODIFIED URETHANE PAVEMENT MARKING (WHITE) - LINE 12"
- ⑨ PROP. MODIFIED URETHANE PAVEMENT MARKING (WHITE) - LINE 24"
- ⑩ PROP. MODIFIED URETHANE PAVEMENT MARKING (WHITE) - LETTERS & SYMBOLS

USER NAME = cisterad	DESIGNED -	REVISED -
PLOT SCALE = 100,0000' / in.	DRAWN -	REVISED -
PLOT DATE = 11/18/2019	CHECKED -	REVISED -
	DATE -	REVISED -

**STATE OF ILLINOIS  
 DEPARTMENT OF TRANSPORTATION**

**PLAN SHEET**  
 SCALE: SHEET 4 OF 13 SHEETS STA. 1259+00 TO STA. 1289+00

F.A.P. RTE. 302	SECTION (34-2) Q-1	COUNTY HANCOCK	TOTAL SHEETS 25	SHEET NO. 16
ILLINOIS FED. AID PROJECT			CONTRACT NO. 72L28	



MODEL: Default  
 FILE: \\hpc1\pub\hpc\room\dat\illinois\poc\RWIDOT\Documents\DOT\_Offices\District 6\Projects\0672\2L\CADD\data\CAD\sheet5\Plan1.dgn



- ① PROP. MODIFIED URETHANE PAVEMENT MARKING (WHITE) - LINE 5"
- ② PROP. MODIFIED URETHANE PAVEMENT MARKING (SKIP-DASH WHITE) - LINE 5"
- ③ PROP. MODIFIED URETHANE PAVEMENT MARKING (DOTTED WHITE) - LINE 6"
- ④ PROP. MODIFIED URETHANE PAVEMENT MARKING (YELLOW) - LINE 5"
- ⑤ PROP. MODIFIED URETHANE PAVEMENT MARKING (DOUBLE YELLOW) - LINE 5"
- ⑥ PROP. MODIFIED URETHANE PAVEMENT MARKING (WHITE) - LINE 6"
- ⑦ PROP. MODIFIED URETHANE PAVEMENT MARKING (WHITE) - LINE 8"
- ⑧ PROP. MODIFIED URETHANE PAVEMENT MARKING (WHITE) - LINE 12"
- ⑨ PROP. MODIFIED URETHANE PAVEMENT MARKING (WHITE) - LINE 24"
- ⑩ PROP. MODIFIED URETHANE PAVEMENT MARKING (WHITE) - LETTERS & SYMBOLS

USER NAME = c1sterad	DESIGNED -	REVISED -
	DRAWN -	REVISED -
PLOT SCALE = 100,0000 ' / in.	CHECKED -	REVISED -
PLOT DATE = 11/18/2019	DATE -	REVISED -

**STATE OF ILLINOIS  
 DEPARTMENT OF TRANSPORTATION**

<b>PLAN SHEET</b>			
SCALE:	SHEET 5	OF 13 SHEETS	STA. 1289+00 TO STA. 1319+00

F.A.P. RTE.	SECTION	COUNTY	TOTAL SHEETS	SHEET NO.
302	(34-2) Q-1	HANCOCK	25	17
ILLINOIS FED. AID PROJECT			CONTRACT NO. 72L28	



MODEL: Default  
 FILE: \\nrcs-pub\baronm.d\at\illinois.gov\PI\DOT\Documents\DOT\_Offices\District 6\Projects\0672\2L\CADD\data\CAD\sheet\Plan1.dgn



- ① PROP. MODIFIED URETHANE PAVEMENT MARKING (WHITE) - LINE 5"
- ② PROP. MODIFIED URETHANE PAVEMENT MARKING (SKIP-DASH WHITE) - LINE 5"
- ③ PROP. MODIFIED URETHANE PAVEMENT MARKING (DOTTED WHITE) - LINE 6"
- ④ PROP. MODIFIED URETHANE PAVEMENT MARKING (YELLOW) - LINE 5"
- ⑤ PROP. MODIFIED URETHANE PAVEMENT MARKING (DOUBLE YELLOW) - LINE 5"
- ⑥ PROP. MODIFIED URETHANE PAVEMENT MARKING (WHITE) - LINE 6"
- ⑦ PROP. MODIFIED URETHANE PAVEMENT MARKING (WHITE) - LINE 8"
- ⑧ PROP. MODIFIED URETHANE PAVEMENT MARKING (WHITE) - LINE 12"
- ⑨ PROP. MODIFIED URETHANE PAVEMENT MARKING (WHITE) - LINE 24"
- ⑩ PROP. MODIFIED URETHANE PAVEMENT MARKING (WHITE) - LETTERS & SYMBOLS

USER NAME = csterad	DESIGNED -	REVISED -
	DRAWN -	REVISED -
PLOT SCALE = 100,0000' / in.	CHECKED -	REVISED -
PLOT DATE = 11/18/2019	DATE -	REVISED -

**STATE OF ILLINOIS  
 DEPARTMENT OF TRANSPORTATION**

**PLAN SHEET**

SCALE: SHEET 6 OF 13 SHEETS STA. 1319+00 TO STA. 1349+00

F.A.P. RTE. 302	SECTION (34-2) Q-1	COUNTY HANCOCK	TOTAL SHEETS 25	SHEET NO. 18
CONTRACT NO. 72L28			ILLINOIS FED. AID PROJECT	



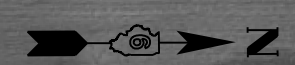
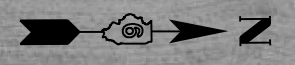
MODEL: Default  
 FILE: h:\a\c\p\suplanroom\dat\illinois\poc\p\WIDOT\Documents\DOT\_Offices\Drawtct\_6\Projects\0672\28\CADD\Drawings\CAD\Sheets\Plan\1.dgn

MATCHLINE STA 1349+00.00

MATCHLINE STA 1364+00.00

MATCHLINE STA 1364+00.00

MATCHLINE STA 1379+00.00



- ① PROP. MODIFIED URETHANE PAVEMENT MARKING (WHITE) - LINE 5"
- ② PROP. MODIFIED URETHANE PAVEMENT MARKING (SKIP-DASH WHITE) - LINE 5"
- ③ PROP. MODIFIED URETHANE PAVEMENT MARKING (DOTTED WHITE) - LINE 6"
- ④ PROP. MODIFIED URETHANE PAVEMENT MARKING (YELLOW) - LINE 5"
- ⑤ PROP. MODIFIED URETHANE PAVEMENT MARKING (DOUBLE YELLOW) - LINE 5"
- ⑥ PROP. MODIFIED URETHANE PAVEMENT MARKING (WHITE) - LINE 6"
- ⑦ PROP. MODIFIED URETHANE PAVEMENT MARKING (WHITE) - LINE 8"
- ⑧ PROP. MODIFIED URETHANE PAVEMENT MARKING (WHITE) - LINE 12"
- ⑨ PROP. MODIFIED URETHANE PAVEMENT MARKING (WHITE) - LINE 24"
- ⑩ PROP. MODIFIED URETHANE PAVEMENT MARKING (WHITE) - LETTERS & SYMBOLS



USER NAME = csterad	DESIGNED -	REVISED -
	DRAWN -	REVISED -
PLOT SCALE = 100,0000 ' / in.	CHECKED -	REVISED -
PLOT DATE = 11/18/2019	DATE -	REVISED -

**STATE OF ILLINOIS  
 DEPARTMENT OF TRANSPORTATION**

**PLAN SHEET**

SCALE: SHEET 7 OF 13 SHEETS STA. 1349+00 TO STA. 1379+00

F.A.P. RTE. 302	SECTION (34-2) Q-1	COUNTY HANCOCK	TOTAL SHEETS 25	SHEET NO. 19
ILLINOIS FED. AID PROJECT			CONTRACT NO. 72L28	

MODEL: Default  
 FILE: \\hpc\p\uplanroom\dot\illinois\p\72L28\CADD\data\CAD\sheet8.rvt



- ① PROP. MODIFIED URETHANE PAVEMENT MARKING (WHITE) - LINE 5"
- ② PROP. MODIFIED URETHANE PAVEMENT MARKING (SKIP-DASH WHITE) - LINE 5"
- ③ PROP. MODIFIED URETHANE PAVEMENT MARKING (DOTTED WHITE) - LINE 6"
- ④ PROP. MODIFIED URETHANE PAVEMENT MARKING (YELLOW) - LINE 5"
- ⑤ PROP. MODIFIED URETHANE PAVEMENT MARKING (DOUBLE YELLOW) - LINE 5"
- ⑥ PROP. MODIFIED URETHANE PAVEMENT MARKING (WHITE) - LINE 6"
- ⑦ PROP. MODIFIED URETHANE PAVEMENT MARKING (WHITE) - LINE 8"
- ⑧ PROP. MODIFIED URETHANE PAVEMENT MARKING (WHITE) - LINE 12"
- ⑨ PROP. MODIFIED URETHANE PAVEMENT MARKING (WHITE) - LINE 24"
- ⑩ PROP. MODIFIED URETHANE PAVEMENT MARKING (WHITE) - LETTERS & SYMBOLS

EXIST. CURVE 458  
 P.I. STA. = 1408+82.85  
 $\Delta = 1^\circ 12' 02''$  (LT)  
 $D = 0^\circ 14' 17''$   
 $R = 24,064.02'$   
 $T = 252.15'$   
 $L = 504.29'$   
 $E = 1.32'$   
 $e = \text{-----}$   
 $T.R. = \text{-----}$   
 $S.E. RUN = \text{-----}$   
 P.C. STA. = 1406+30.70  
 P.T. STA. = 1411+34.98

USER NAME = cslerrad	DESIGNED -	REVISED -
	DRAWN -	REVISED -
PLOT SCALE = 100,0000' / in.	CHECKED -	REVISED -
PLOT DATE = 11/18/2019	DATE -	REVISED -

**STATE OF ILLINOIS  
 DEPARTMENT OF TRANSPORTATION**

**PLAN SHEET**

SCALE: SHEET 8 OF 13 SHEETS STA. 1379+00 TO STA. 1409+00

F.A.P. RTE.	SECTION	COUNTY	TOTAL SHEETS	SHEET NO.
302	(34-2) Q-1	HANCOCK	25	20
CONTRACT NO. 72L28				
ILLINOIS FED. AID PROJECT				



MODEL: Default  
 FILE: \\nrcs-pub\pubroom\dat\illinois\poc\PI\DOT\Documents\DOT\_Offices\Drawtct\_6\Projects\0672L28\CADD\data\CAD\sheet9.plt



EXIST. CURVE 461  
 PI STA. = 1421+29.20  
 $\Delta = 1^\circ 12' 33''$  (RT)  
 $D = 0^\circ 14' 23''$   
 $R = 23,895.96'$   
 $T = 252.15'$   
 $L = 504.29'$   
 $E = 1.33'$   
 $e = \text{-----}$   
 $T.R. = \text{-----}$   
 $S.E. \text{ RUN} = \text{-----}$   
 $P.C. \text{ STA.} = 1418+77.05$   
 $P.T. \text{ STA.} = 1423+81.34$

- ① PROP. MODIFIED URETHANE PAVEMENT MARKING (WHITE) - LINE 5"
- ② PROP. MODIFIED URETHANE PAVEMENT MARKING (SKIP-DASH WHITE) - LINE 5"
- ③ PROP. MODIFIED URETHANE PAVEMENT MARKING (DOTTED WHITE) - LINE 6"
- ④ PROP. MODIFIED URETHANE PAVEMENT MARKING (YELLOW) - LINE 5"
- ⑤ PROP. MODIFIED URETHANE PAVEMENT MARKING (DOUBLE YELLOW) - LINE 5"
- ⑥ PROP. MODIFIED URETHANE PAVEMENT MARKING (WHITE) - LINE 6"
- ⑦ PROP. MODIFIED URETHANE PAVEMENT MARKING (WHITE) - LINE 8"
- ⑧ PROP. MODIFIED URETHANE PAVEMENT MARKING (WHITE) - LINE 12"
- ⑨ PROP. MODIFIED URETHANE PAVEMENT MARKING (WHITE) - LINE 24"
- ⑩ PROP. MODIFIED URETHANE PAVEMENT MARKING (WHITE) - LETTERS & SYMBOLS

USER NAME = csterad	DESIGNED -	REVISED -
	DRAWN -	REVISED -
PLOT SCALE = 100,0000' / in.	CHECKED -	REVISED -
PLOT DATE = 11/18/2019	DATE -	REVISED -

**STATE OF ILLINOIS  
 DEPARTMENT OF TRANSPORTATION**

**PLAN SHEET**  
 SCALE: SHEET 9 OF 13 SHEETS STA. 1409+00 TO STA. 1439+00

F.A.P. RTE. 302	SECTION (34-2) Q-1	COUNTY HANCOCK	TOTAL SHEETS 25	SHEET NO. 21
ILLINOIS FED. AID PROJECT			CONTRACT NO. 72L28	



MODEL: Default  
 FILE: \\hpc\p\uploadroom\dot\illinois\poc\p\WIDOT\Documents\DOT\_Offices\Illinet\6\Projects\0672\28\CADD\data\CAD\sheet\plan1.dgn



- ① PROP. MODIFIED URETHANE PAVEMENT MARKING (WHITE) - LINE 5"
- ② PROP. MODIFIED URETHANE PAVEMENT MARKING (SKIP-DASH WHITE) - LINE 5"
- ③ PROP. MODIFIED URETHANE PAVEMENT MARKING (DOTTED WHITE) - LINE 6"
- ④ PROP. MODIFIED URETHANE PAVEMENT MARKING (YELLOW) - LINE 5"
- ⑤ PROP. MODIFIED URETHANE PAVEMENT MARKING (DOUBLE YELLOW) - LINE 5"
- ⑥ PROP. MODIFIED URETHANE PAVEMENT MARKING (WHITE) - LINE 6"
- ⑦ PROP. MODIFIED URETHANE PAVEMENT MARKING (WHITE) - LINE 8"
- ⑧ PROP. MODIFIED URETHANE PAVEMENT MARKING (WHITE) - LINE 12"
- ⑨ PROP. MODIFIED URETHANE PAVEMENT MARKING (WHITE) - LINE 24"
- ⑩ PROP. MODIFIED URETHANE PAVEMENT MARKING (WHITE) - LETTERS & SYMBOLS

USER NAME = cslterad	DESIGNED -	REVISED -
	DRAWN -	REVISED -
PLOT SCALE = 100,0000' / in.	CHECKED -	REVISED -
PLOT DATE = 11/18/2019	DATE -	REVISED -

**STATE OF ILLINOIS  
 DEPARTMENT OF TRANSPORTATION**

**PLAN SHEET**

SCALE: SHEET 10 OF 13 SHEETS STA. 1439+00 TO STA. 1469+00

F.A.P. RTE.	SECTION	COUNTY	TOTAL SHEETS	SHEET NO.
302	(34-2) Q-1	HANCOCK	25	22
			CONTRACT NO. 72L28	
ILLINOIS FED. AID PROJECT				



MODEL: Default  
 FILE: \\nrcs-pub\pub\room\dat\illinois\pwr\DOT\Documents\DOT\_Offices\Dir\ctc\_6\Projects\0672\28\CADD\data\CAD\sheet\plan1.dgn



- ① PROP. MODIFIED URETHANE PAVEMENT MARKING (WHITE) - LINE 5"
- ② PROP. MODIFIED URETHANE PAVEMENT MARKING (SKIP-DASH WHITE) - LINE 5"
- ③ PROP. MODIFIED URETHANE PAVEMENT MARKING (DOTTED WHITE) - LINE 6"
- ④ PROP. MODIFIED URETHANE PAVEMENT MARKING (YELLOW) - LINE 5"
- ⑤ PROP. MODIFIED URETHANE PAVEMENT MARKING (DOUBLE YELLOW) - LINE 5"
- ⑥ PROP. MODIFIED URETHANE PAVEMENT MARKING (WHITE) - LINE 6"
- ⑦ PROP. MODIFIED URETHANE PAVEMENT MARKING (WHITE) - LINE 8"
- ⑧ PROP. MODIFIED URETHANE PAVEMENT MARKING (WHITE) - LINE 12"
- ⑨ PROP. MODIFIED URETHANE PAVEMENT MARKING (WHITE) - LINE 24"
- ⑩ PROP. MODIFIED URETHANE PAVEMENT MARKING (WHITE) - LETTERS & SYMBOLS

USER NAME = cisterad	DESIGNED -	REVISED -
	DRAWN -	REVISED -
PLOT SCALE = 100,0000' / in.	CHECKED -	REVISED -
PLOT DATE = 11/18/2019	DATE -	REVISED -

**STATE OF ILLINOIS  
 DEPARTMENT OF TRANSPORTATION**

**PLAN SHEET**

SCALE: SHEET 11 OF 13 SHEETS STA. 1469+00 TO STA. 1499+00

F.A.P. RTE. 302	SECTION (34-2) Q-1	COUNTY HANCOCK	TOTAL SHEETS 25	SHEET NO. 23
ILLINOIS FED. AID PROJECT			CONTRACT NO. 72L28	



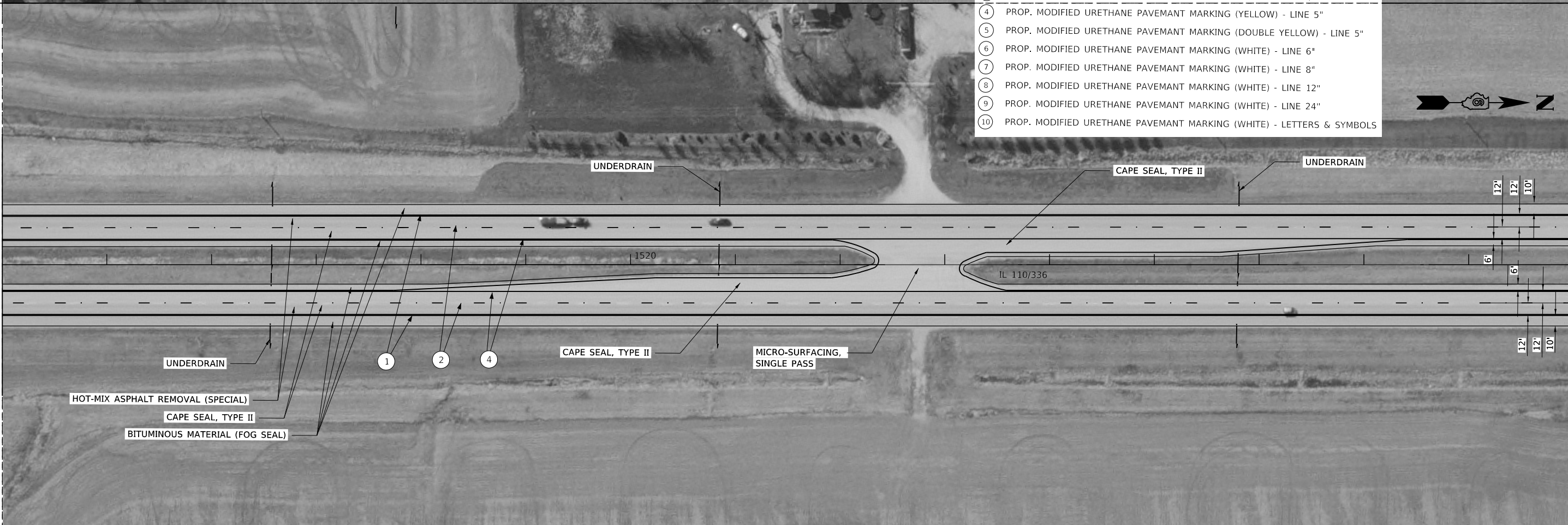
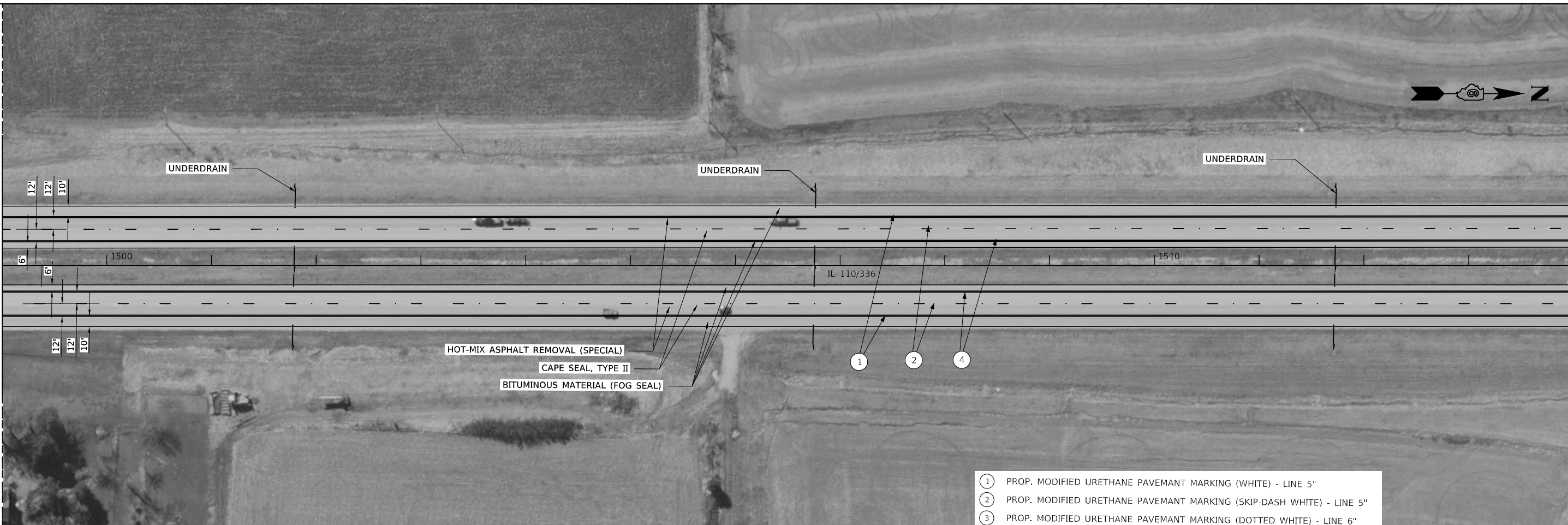
MODEL: Default  
 FILE NAME: p:\pub\lancom.doi\illinois\pwr\WDDOT\Documents\DOT Office\Drawings\Projects\0672L2L2\CAD\DATA\CAD\Drawings\Plan1.dgn

MATCHLINE STA 1499+00.11

MATCHLINE 1514+00.11XXXX+XX

MATCHLINE STA 1514+00.11

MATCHLINE STA 1529+00.11



- ① PROP. MODIFIED URETHANE PAVEMENT MARKING (WHITE) - LINE 5"
- ② PROP. MODIFIED URETHANE PAVEMENT MARKING (SKIP-DASH WHITE) - LINE 5"
- ③ PROP. MODIFIED URETHANE PAVEMENT MARKING (DOTTED WHITE) - LINE 6"
- ④ PROP. MODIFIED URETHANE PAVEMENT MARKING (YELLOW) - LINE 5"
- ⑤ PROP. MODIFIED URETHANE PAVEMENT MARKING (DOUBLE YELLOW) - LINE 5"
- ⑥ PROP. MODIFIED URETHANE PAVEMENT MARKING (WHITE) - LINE 6"
- ⑦ PROP. MODIFIED URETHANE PAVEMENT MARKING (WHITE) - LINE 8"
- ⑧ PROP. MODIFIED URETHANE PAVEMENT MARKING (WHITE) - LINE 12"
- ⑨ PROP. MODIFIED URETHANE PAVEMENT MARKING (WHITE) - LINE 24"
- ⑩ PROP. MODIFIED URETHANE PAVEMENT MARKING (WHITE) - LETTERS & SYMBOLS

USER NAME = cisterad	DESIGNED - _____	REVISED - _____
DRAWN - _____	REVISIONS - _____	
PLOT SCALE = 99.9982' / in.	CHECKED - _____	REVISED - _____
PLOT DATE = 11/18/2019	DATE - _____	REVISED - _____

**STATE OF ILLINOIS  
DEPARTMENT OF TRANSPORTATION**

**PLAN SHEET**

SCALE: \_\_\_\_\_ SHEET 12 OF 13 SHEETS STA. 1499+00 TO STA. 1529+00

F.A.P. RTE.	SECTION	COUNTY	TOTAL SHEETS	SHEET NO.
302	(34-2) Q-1	HANCOCK	25	24
ILLINOIS FED. AID PROJECT			CONTRACT NO. 72L28	

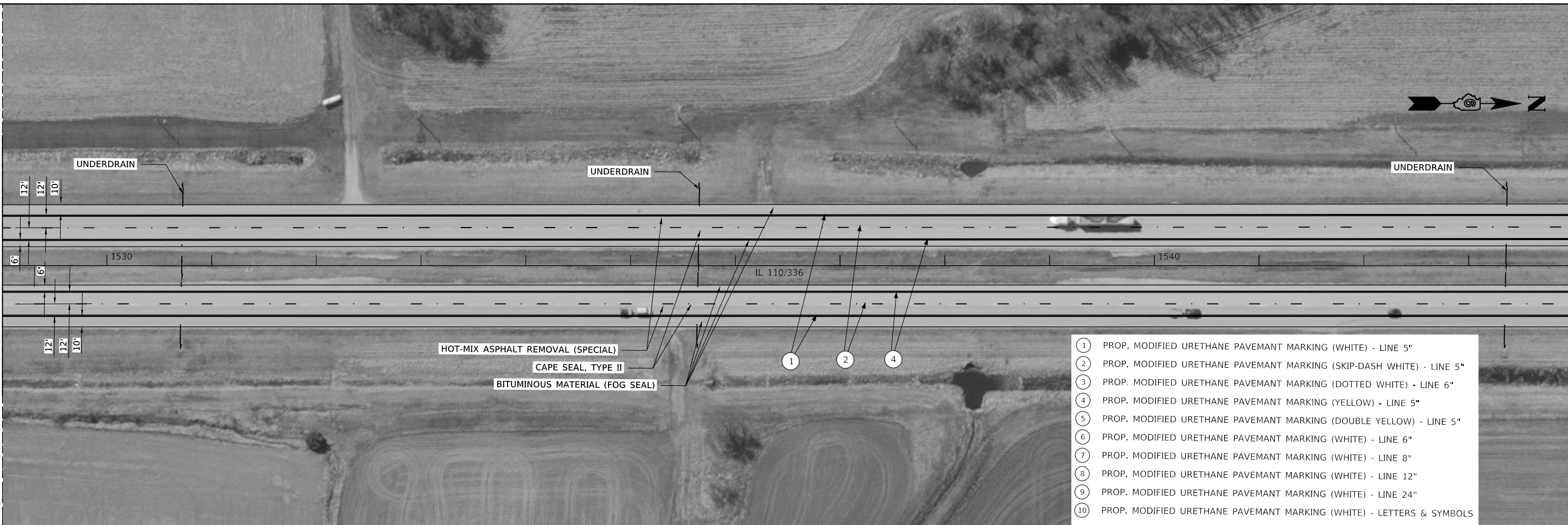


MODEL: Default  
 FILE: h:\a\c\p\pub\harcourt\dot\Documents\DOT\_Offices\lhart\c\Projects\0672L28\CADD\data\CAD\sheet\plan1.dgn

MATCHLINE STA 1529+00.11

MATCHLINE STA 1544+00.11

MATCHLINE STA 1544+00.11



- ① PROP. MODIFIED URETHANE PAVEMANT MARKING (WHITE) - LINE 5"
- ② PROP. MODIFIED URETHANE PAVEMANT MARKING (SKIP-DASH WHITE) - LINE 5"
- ③ PROP. MODIFIED URETHANE PAVEMANT MARKING (DOTTED WHITE) - LINE 6"
- ④ PROP. MODIFIED URETHANE PAVEMANT MARKING (YELLOW) - LINE 5"
- ⑤ PROP. MODIFIED URETHANE PAVEMANT MARKING (DOUBLE YELLOW) - LINE 5"
- ⑥ PROP. MODIFIED URETHANE PAVEMANT MARKING (WHITE) - LINE 6"
- ⑦ PROP. MODIFIED URETHANE PAVEMANT MARKING (WHITE) - LINE 8"
- ⑧ PROP. MODIFIED URETHANE PAVEMANT MARKING (WHITE) - LINE 12"
- ⑨ PROP. MODIFIED URETHANE PAVEMANT MARKING (WHITE) - LINE 24"
- ⑩ PROP. MODIFIED URETHANE PAVEMANT MARKING (WHITE) - LETTERS & SYMBOLS

USER NAME = c1sterad	DESIGNED -	REVISED -
	DRAWN -	REVISED -
PLOT SCALE = 100,0000' / in.	CHECKED -	REVISED -
PLOT DATE = 11/18/2019	DATE -	REVISED -

**STATE OF ILLINOIS  
 DEPARTMENT OF TRANSPORTATION**

**PLAN SHEET**

SCALE: SHEET 13 OF 13 SHEETS STA. 1529+00 TO STA. 687+60.5

F.A.P. RTE.	SECTION	COUNTY	TOTAL SHEETS	SHEET NO.
302	(34-2) Q-1	HANCOCK	25	25
CONTRACT NO. 72L28				
ILLINOIS FED. AID PROJECT				