

STATE OF ILLINOIS
DEPARTMENT OF TRANSPORTATION

F.A.P. RTE.	SECTION	COUNTY	TOTAL SHEETS	SHEET NO.
34	(2) BRR	MENARD	10	1
ILLINOIS			CONTRACT NO. 72L48	

D-96-010-20



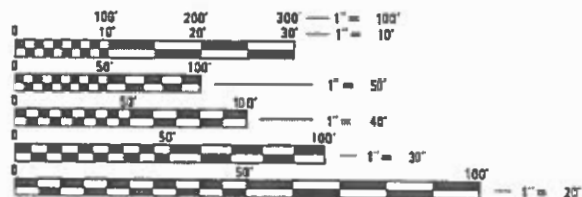
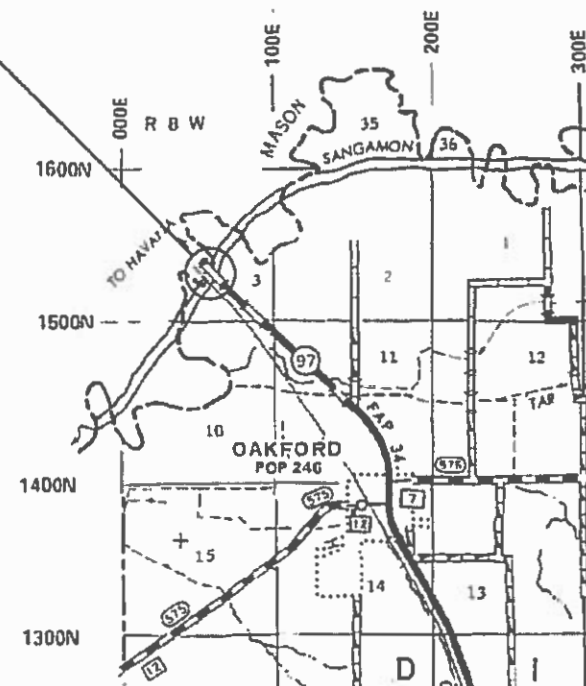
FOR INDEX OF SHEETS, SEE SHEET NO. 2

PROPOSED CONTRACT MAINTENANCE

FAP ROUTE 34 (IL 97)
SECTION (2) BRR
PROJECT (STATE)
BRIDGE PARAPET REPAIR
MENARD COUNTY

C-96-027-20

PROJECT LOCATION
SN 065-0002
IL 97 OVER SANGAMON RIVER
AT MASON/MENARD CO. LINE



FULL SIZE PLANS HAVE BEEN PREPARED USING STANDARD ENGINEERING SCALES. REDUCED SIZED PLANS WILL NOT CONFORM TO STANDARD SCALES. IN MAKING MEASUREMENTS ON REDUCED PLANS, THE ABOVE SCALES MAY BE USED.

J.U.L.I.E.
JOINT UTILITY LOCATION INFORMATION FOR EXCAVATORS
1-800-892-0123
OR 811

PROJECT ENGINEER: BRANDON DUDLEY - (217) 785-9290

GROSS LENGTH = x.xx FT. = x.xxx MILE

NET LENGTH = x.xx FT. = x.xxx MILE

CONTRACT NO. 72L48

STATE OF ILLINOIS
DEPARTMENT OF TRANSPORTATION

SUBMITTED October 10 20 19
[Signature]
REGIONAL ENGINEER

Dec 6 20 19
[Signature]
ENGINEER OF DESIGN AND ENVIRONMENT

Dec 10 20 19
[Signature]
DIRECTOR OF HIGHWAYS PROJECT IMPLEMENTATION

PRINTED BY THE AUTHORITY
OF THE STATE OF ILLINOIS




INDEX OF SHEETS

- 1 COVER SHEET
- 2 INDEX, STANDARDS, SIGNATURES. & GENERAL NOTES
- 3 SUMMARY OF QUANTITIES
- 4-5 TRAFFIC STAGING DETAILS
- 6-10 BRIDGE PLANS

STANDARDS

- 000001-07
- 001001-02
- 001006
- 701001-02
- 701006-05
- 701201-05
- 701301-04
- 701321-18
- 701901-08
- 704001-08
- 782006-01

GENERAL NOTES:

STATE OF ILLINOIS DEPARTMENT OF TRANSPORTATION DIVISION OF HIGHWAYS DISTRICT 6	
EXAMINED <u>10/2</u> 20 <u>19</u>	 ENGINEER OF OPERATIONS
EXAMINED <u>10-7</u> 20 <u>19</u>	 ENGINEER OF PROJECT IMPLEMENTATION
EXAMINED <u>October 9</u> 20 <u>19</u>	 ENGINEER OF PROGRAM DEVELOPMENT

MODEL: Dclaur
 FILE NAME: \\CENTRAL\OPERATIONS\Bridges\Bridges\Illinois_CAD\724.RB - 05040007.DWG\DWGINDEX.DWG

REV. - MS

	USLR NAME = dudleyum	DESIGNED -	REVISED -	STATE OF ILLINOIS DEPARTMENT OF TRANSPORTATION	INDEX OF SHEETS, STANDARDS, GENERAL NOTES, & SIGNATURES	F.A.P. RTE. 34	SECTION (2) BRR	COUNTY MENARD	TOTAL SHEETS 10	SHEET NO. 2
	PLOT SCALE = 100.0000' in.	DRAWN -	REVISED -			CONTRACT NO. 72L48		ILLINOIS FED. AID PROJECT		
	PLOT DATE = 10/10/2019	CHECKED -	REVISED -		SCALE:	SHEET	OF	SHEETS	STA.	TO STA.

0-02174-6027
SN 065-0002
100% STATE
SN 065-0002
0047-RURAL
MENARD

CODE NO.	ITEM	UNIT	TOTAL QUANTITY	
50157300	PROTECTIVE SHIELD	SQ YD	236	236
50102400	CONCRETE REMOVAL	CU YD	79	79
50300255	CONCRETE SUPERSTRUCTURE	CU YD	79	79
50300300	PROTECTIVE COAT	SQ YD	367	367
50800205	REINFORCEMENT BARS, EPOXY COATED	POUND	8430	8430
67100100	MOBILIZATION	L SUM	1	1
70100405	TRAFFIC CONTROL AND PROTECTION, STANDARD 701321	EACH	1	1
70100450	TRAFFIC CONTROL AND PROTECTION, STANDARD 701201	L SUM	1	1
70106500	TEMPORARY BRIDGE TRAFFIC SIGNALS	EACH	1	1
70400100	TEMPORARY CONCRETE BARRIER	FOOT	900	900
70400200	RELOCATE TEMPORARY CONCRETE BARRIER	FOOT	900	900
70600250	IMPACT ATTENUATORS, TEMPORARY (FULLY REDIRECTIVE, NARROW), TEST LEVEL 3	EACH	2	2
70600332	IMPACT ATTENUATORS, RELOCATE (FULLY REDIRECTIVE, NARROW), TEST LEVEL 3	EACH	2	2

MODEL: D:\pilot\...
 FILE NAME: C:\projects\OPERATIONS\Bridges\Bridges\CAD\72L48 - 0650002.parapetplan\sheet.dgn

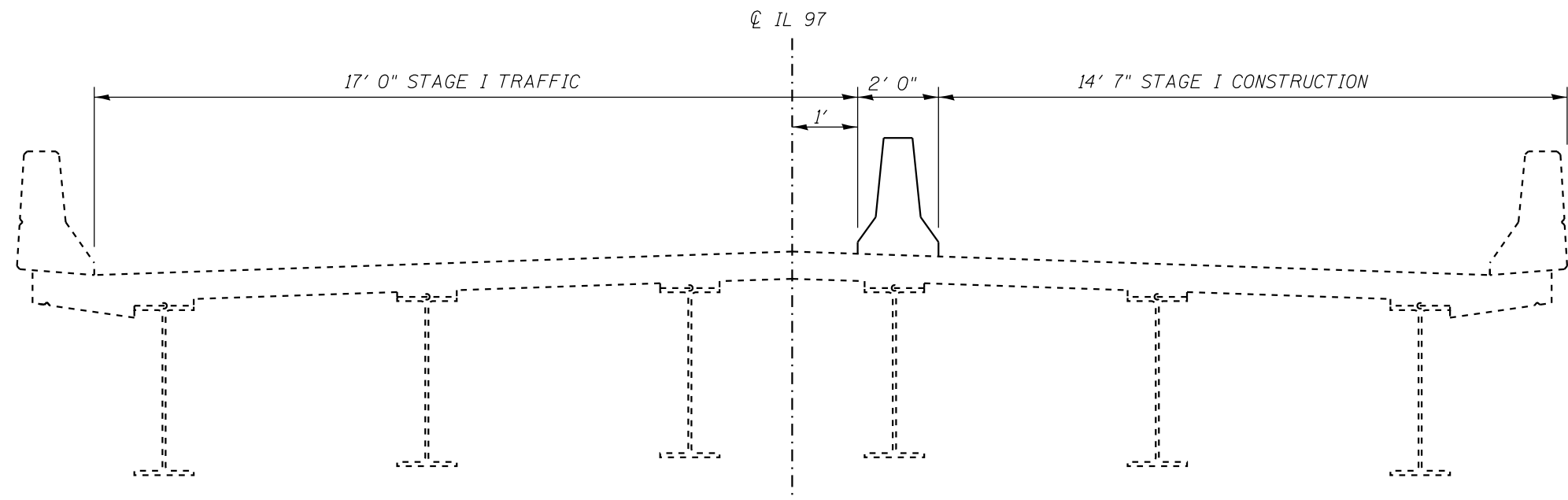
USER NAME = dudleybm	DESIGNED -	REVISED -
	DRAWN -	REVISED -
PLOT SCALE = 100.0000' / in.	CHECKED -	REVISED -
PLOT DATE = 10/10/2019	DATE -	REVISED -

**STATE OF ILLINOIS
DEPARTMENT OF TRANSPORTATION**

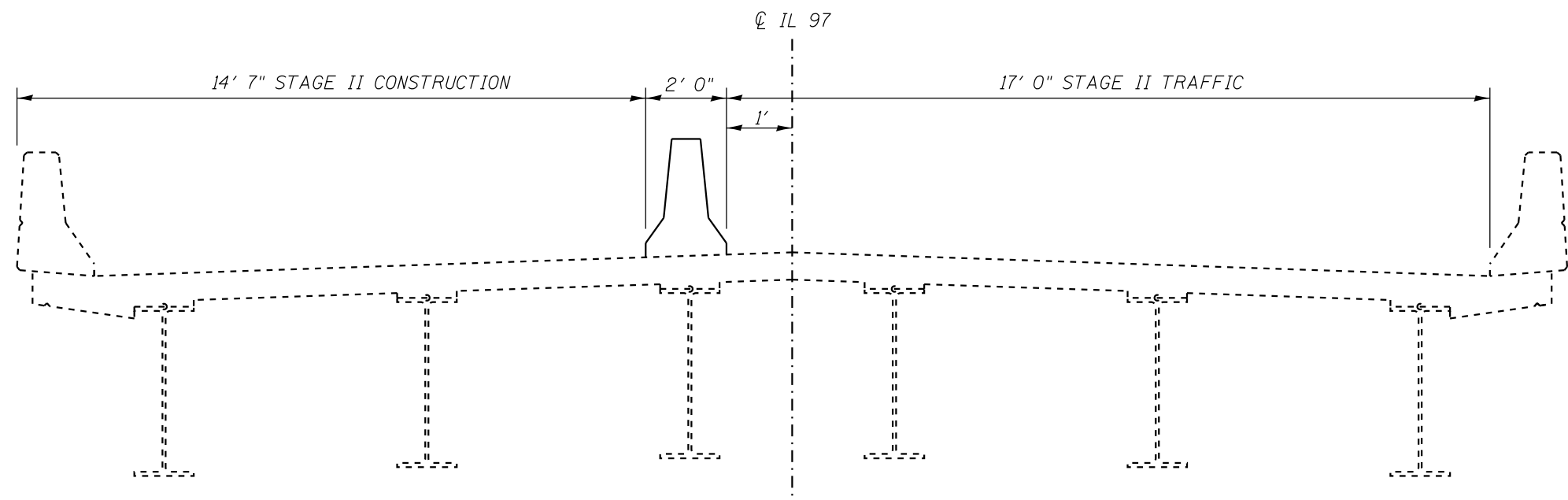
SUMMARY OF QUANTITIES

SCALE: SHEET OF SHEETS STA. TO STA.

F.A.P. RTE.	SECTION	COUNTY	TOTAL SHEETS	SHEET NO.
34	(2) BRR	MENARD	10	3
			CONTRACT NO. 72L48	
ILLINOIS FED. AID PROJECT				



STAGE I CROSS SECTION (LOOKING NORTH)



STAGE II CROSS SECTION (LOOKING NORTH)

MODEL: Default
 FILE NAME: \\CENTRALDB\OPERATIONS\Bridges\Bridges\CAD\72L48 - 0650002.para\stage1crosssec.dgn

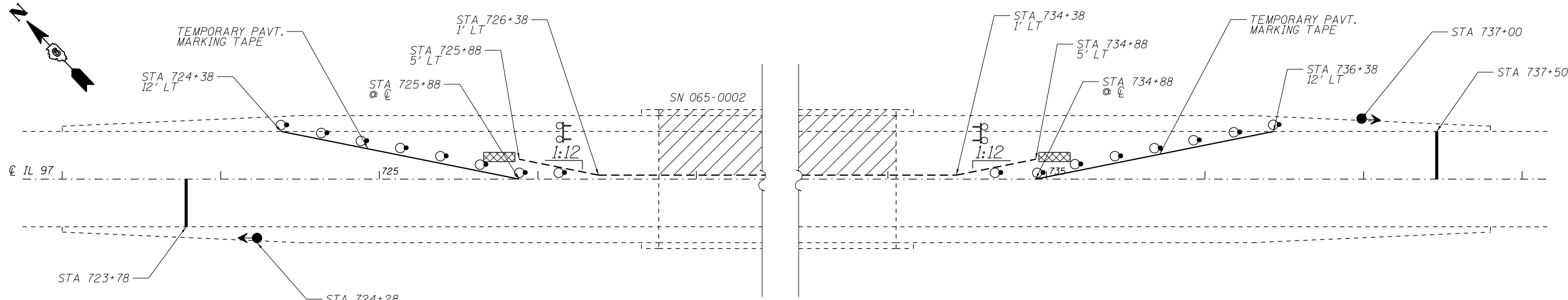
USER NAME = dudleybm	DESIGNED -	REVISED -
	DRAWN -	REVISED -
PLOT SCALE = 100.0000' / in.	CHECKED -	REVISED -
PLOT DATE = 10/10/2019	DATE -	REVISED -

**STATE OF ILLINOIS
DEPARTMENT OF TRANSPORTATION**

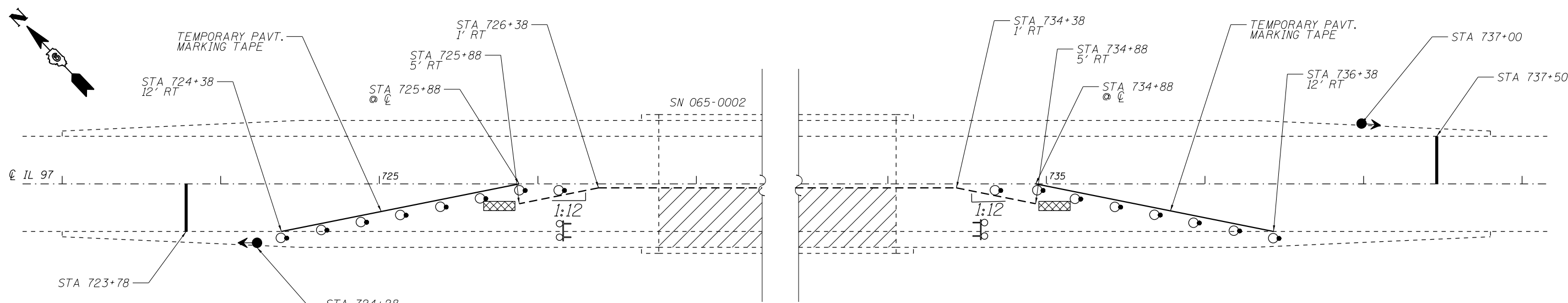
TRAFFIC STAGING PLAN

SCALE: SHEET OF SHEETS STA. TO STA.

F.A.P. RTE.	SECTION	COUNTY	TOTAL SHEETS	SHEET NO.
34	(2) BRR	MENARD	10	4
CONTRACT NO. 72L48			ILLINOIS FED. AID PROJECT	



STAGE I TRAFFIC CONTROL PLAN



STAGE II TRAFFIC CONTROL PLAN

SYMBOLS

- WORK AREA
- SIGN
- IMPACT ATTENUATOR
- TEMPORARY CONCRETE BARRIER WALL
- TRAFFIC SIGNAL
- DRUM WITH STEADY BURNING LIGHT
- TYPE III BARRICADE WITH FLASHING LIGHTS

TRAFFIC CONTROL NOTES:

1. TRAFFIC CONTROL DEVICES NOT SHOWN IN THIS DETAIL SHALL BE PER STANDARD 701321. DEVICES AND TEMPORARY PAVEMENT MARKINGS SHOWN IN THIS DETAIL SHALL BE INCLUDED IN THE COST OF TRAFFIC CONTROL AND PROTECTION. STANDARD 701321. IMPACT ATTENUATORS, TEMPORARY CONCRETE BARRIER, AND TEMPORARY TRAFFIC SIGNALS SHALL BE PAID SEPARATELY.
2. TEMPORARY RUMBLE STRIPS SHOWN IN STANDARD 701321 SHALL NOT BE REQUIRED.
3. STOP BARS SHOWN SHALL BE 24" WIDE.
4. TEMPORARY CONCRETE BARRIER OFFSETS GIVEN IN THIS DETAIL REFER TO THE EDGE OF THE BARRIER NEAREST TO LIVE TRAFFIC.

MODEL: Default
 FILE NAME: \\CENTRALDB\OPERATIONS\Bridges\Bridges\CAD\72L48 - 0650002 - parasettabarret.dgn

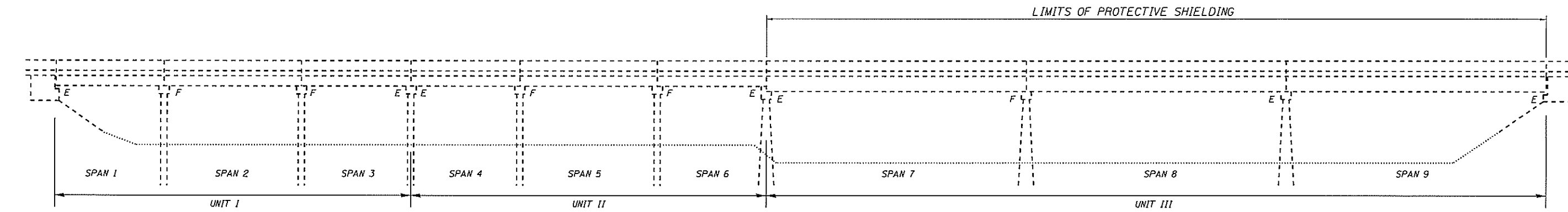
USER NAME = dudleybm	DESIGNED -	REVISED -	
	DRAWN -	REVISED -	
PLOT SCALE = 100.0000' / in.	CHECKED -	REVISED -	
PLOT DATE = 10/10/2019	DATE -	REVISED -	

**STATE OF ILLINOIS
DEPARTMENT OF TRANSPORTATION**

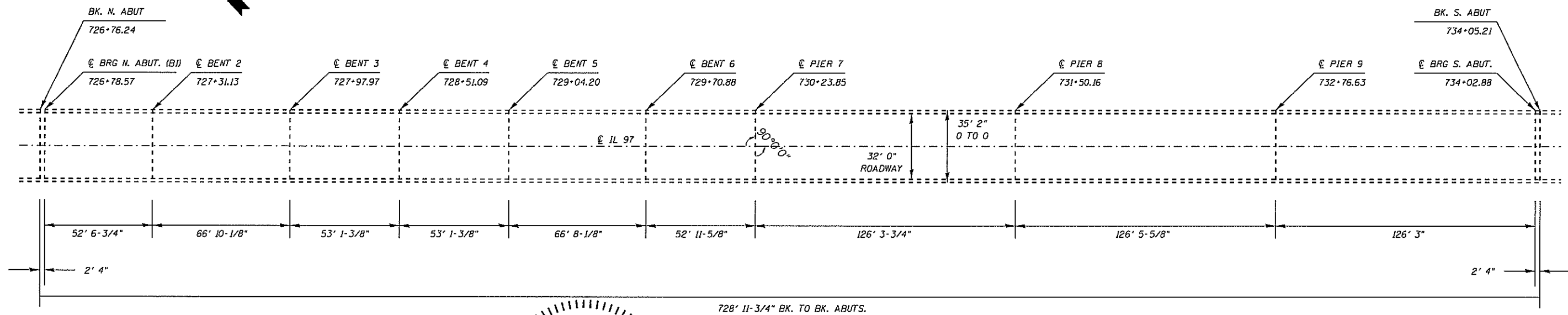
TRAFFIC CONTROL PLAN

SCALE: SHEET OF SHEETS STA. TO STA.

F.A.P. RTE.	SECTION	COUNTY	TOTAL SHEETS	SHEET NO.
34	(2) BRR	MENARD	10	5
CONTRACT NO. 72L48				
ILLINOIS FED. AID PROJECT				

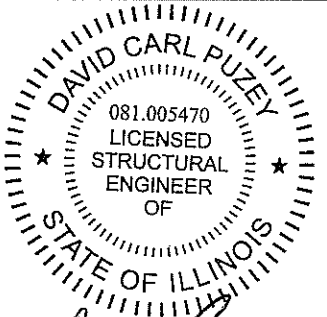


ELEVATION



728' 11-3/4" BK. TO BK. ABUTS.

PLAN



*Do Carl Puzey 12/4/19
Expires 1/30/20*

STRUCTURE GENERAL NOTES:

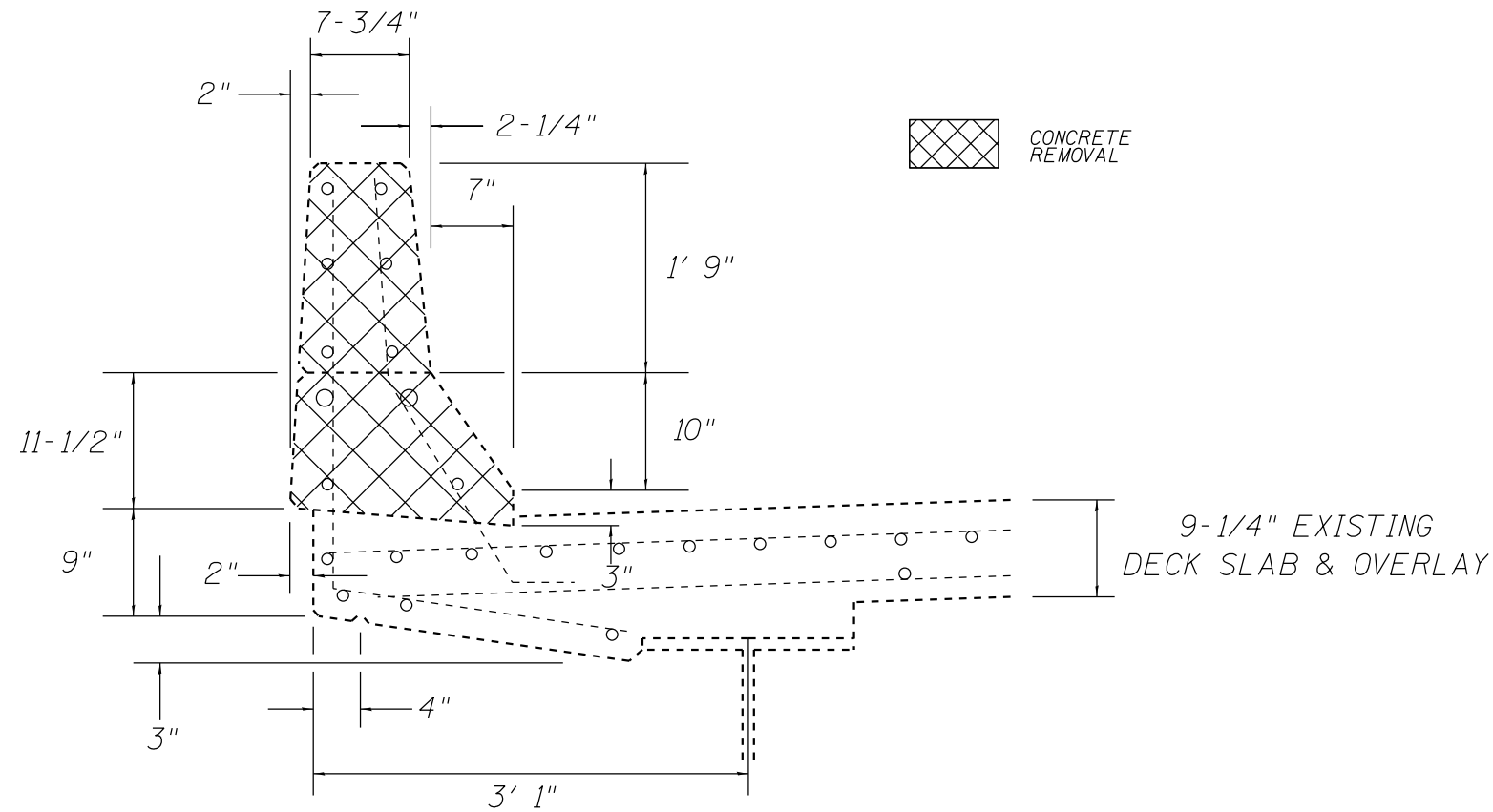
- ALL STRUCTURAL STEEL SHALL BE AASHTO M-270 GRADE 36, UNLESS OTHERWISE NOTED.
- REINFORCEMENT BARS DESIGNATED (E) SHALL BE EPOXY COATED.
- PLAN DIMENSIONS AND DETAILS RELATIVE TO EXISTING PLANS ARE SUBJECT TO NOMINAL CONSTRUCTION VARIATIONS. THE CONTRACTOR SHALL FIELD VERIFY EXISTING DIMENSIONS AND DETAILS AFFECTING NEW CONSTRUCTION AND MAKE NECESSARY APPROVED ADJUSTMENTS PRIOR TO CONSTRUCTION OR ORDERING OF MATERIALS. SUCH VARIATIONS SHALL NOT BE CAUSE FOR ADDITIONAL COMPENSATION FOR A CHANGE IN THE SCOPE OF WORK, HOWEVER, THE CONTRACTOR WILL BE PAID FOR THE QUANTITY ACTUALLY FURNISHED AT THE UNIT PRICE BID FOR THE WORK.
- EXISTING REINFORCEMENT BARS EXTENDING INTO THE REMOVAL AREA SHALL BE CLEANED, STRAIGHTENED, AND INCORPORATED INTO THE NEW CONSTRUCTION. ANY REINFORCEMENT BARS THAT ARE DAMAGED DURING CONCRETE REMOVAL SHALL BE REPLACED WITH AN APPROVED BAR SPLICER OR ANCHORAGE SYSTEM. COST INCLUDED WITH CONCRETE REMOVAL.
- PROTECTIVE COAT SHALL BE APPLIED TO ALL NEW CONCRETE.

TOTAL BILL OF MATERIAL (065-0002)

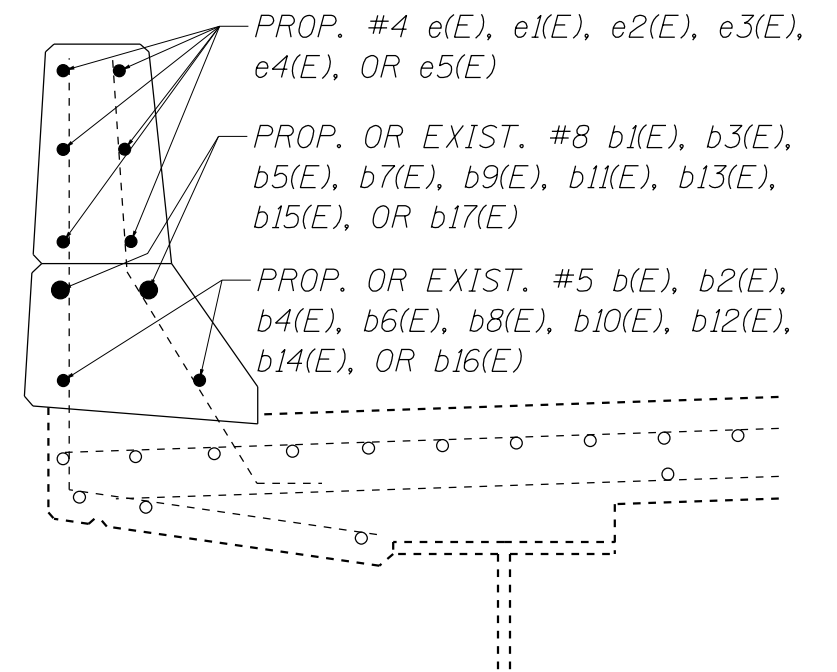
ITEM	UNIT	QUANTITY
Concrete Removal	Cu. Yd.	79
Concrete Superstructure	Cu. Yd.	79
Protective Shield	Sq. Yd.	236
Reinforcement Bars, Epoxy Coated	Pound	8430
Protective Coat	Sq. Yd.	367

MODEL: Default
FILE NAME: \\C:\Users\jacob\OneDrive\Documents\Bridges\065-0002\Bridges\065-0002.dwg
DATE: 10/10/2019

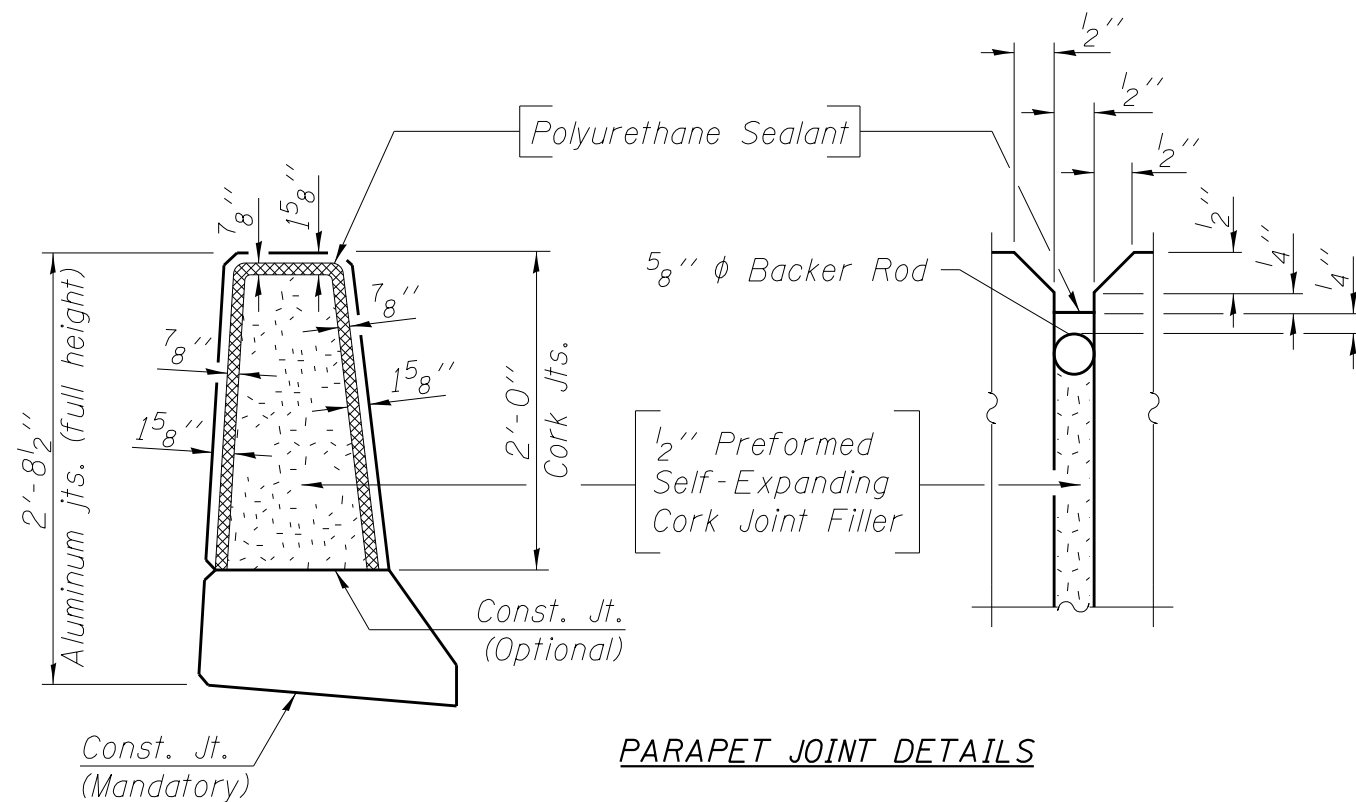
USER NAME = dudleybm	DESIGNED - BMD	REVISED -	STATE OF ILLINOIS DEPARTMENT OF TRANSPORTATION	BRIDGE PLAN & ELEVATION SN 065-0002		F.A.P. RTE. = 34	SECTION = (2) BRR	COUNTY = MENARD	TOTAL SHEETS = 10	SHEET NO. = 6	
PLOT SCALE = 1/8" = 100.0000' / 1 in.	CHECKED - SMR	REVISED -		SCALE:	SHEET 1 OF 5 SHEETS	STA. TO STA.	ILLINOIS FED. AID PROJECT				
PLOT DATE = 10/10/2019	DATE -	REVISED -		CONTRACT NO. 72L48							



TYPICAL PARAPET REMOVAL CROSS SECTION



TYPICAL PARAPET CROSS SECTION
(DIMENSIONS SIMILAR TO EXISTING)



PARAPET JOINT DETAILS

General Notes:

1. Parapet joints shall be constructed as called out in the plan sheets.
2. The 1/8" Aluminum sheet shall be ASTM B 209 alloy 3003-H14 and coated to minimize reaction with wet concrete. Cost included with Concrete Superstructure.
3. The Polyurethane Sealant shall be non-staining gray one component non-sag elastomeric gun grade meeting the requirements of ASTM C-920, Type S, Grade NS, Class 25. Use T with a 5/8" backer rod.
4. The 1/2" Preformed Self-Expanding Cork Joint Filler shall be according to Article 1051.07 of the Std. Spec. Cost included with Concrete Superstructure.

MODEL: Default
FILE NAME: C:\CONTRACTS\OPERATIONS\Bridges\Bridges\CAD\72L48 - 0650002 - parapet\brshreec.dgn

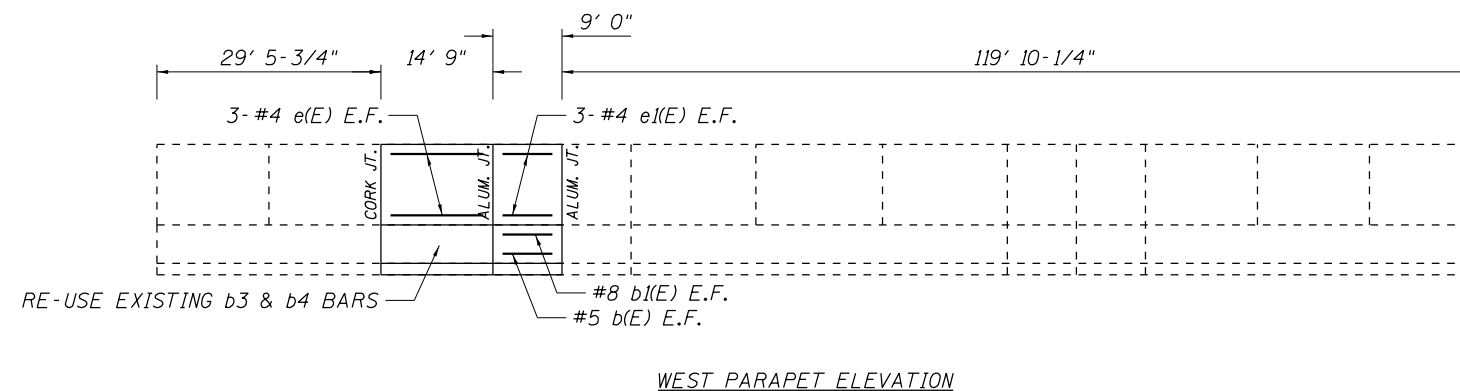
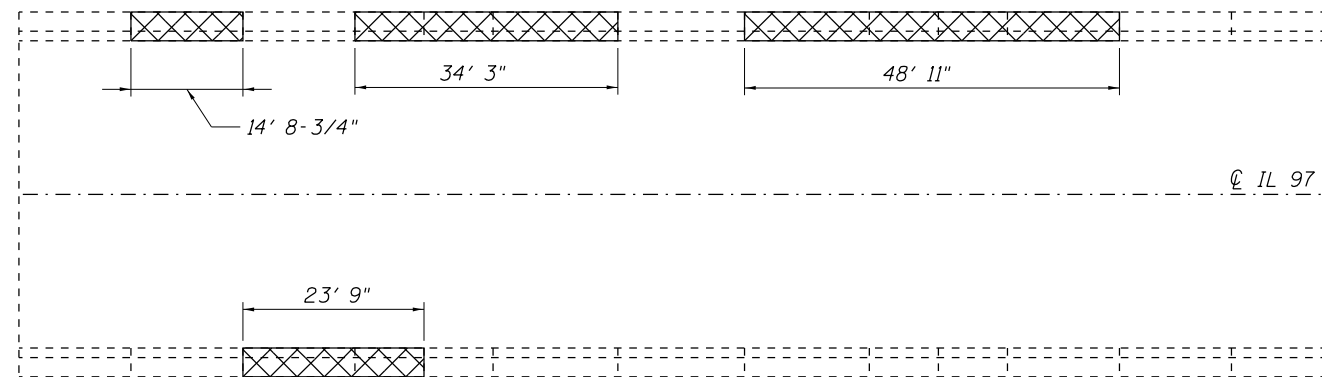
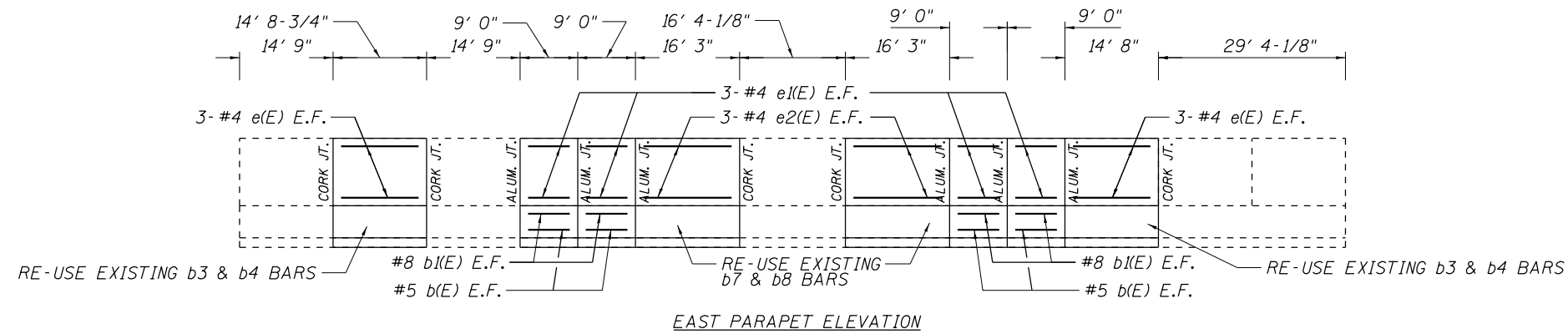
USER NAME = dudleybm	DESIGNED -	REVISED -
PLOT SCALE = 100.0000' / in.	DRAWN -	REVISED -
PLOT DATE = 10/10/2019	CHECKED -	REVISED -
	DATE -	REVISED -

STATE OF ILLINOIS
DEPARTMENT OF TRANSPORTATION

PARAPET REPLACEMENT DETAILS
SN 065-0002

SCALE: SHEET 2 OF 5 SHEETS STA. TO STA.

F.A.P. RTE.	SECTION	COUNTY	TOTAL SHEETS	SHEET NO.
34	(2) BRR	MENARD	10	7
ILLINOIS FED. AID PROJECT			CONTRACT NO. 72L48	



GENERAL NOTES:

1. CONCRETE REMOVAL SHALL TERMINATE AT EXISTING PARAPET JOINTS UNLESS OTHERWISE SHOWN. VERTICAL REMOVAL LIMITS THAT DO NOT CORRESPOND WITH EXISTING JOINTS SHALL BE SAW CUT 3/4" DEEP PRIOR TO CONCRETE REMOVAL.
2. EXISTING VERTICAL REINFORCING AND HORIZONTAL REINFORCING EXTENDING INTO THE REMOVAL AREA SHALL BE LEFT IN PLACE AND RE-USED. ALL OTHER EXISTING HORIZONTAL REINFORCING SHALL BE REMOVED AND REPLACED. PROPOSED HORIZONTAL BARS SHALL BE LAPPED WITH EXISTING BARS EXTENDING INTO THE REMOVAL AREA.
3. PLACEMENT OF PROPOSED REINFORCING STEEL SHALL BE PER THE PARAPET DETAILS ON SHEET 2 OF 5.
4. PARAPET JOINTS SHALL BE PLACED AT EXISTING LOCATIONS AND PER THE PARAPET DETAILS ON SHEET 2 OF 5.

UNIT I BILL OF MATERIAL

BAR	NO.	SIZE	LENGTH	SHAPE
e(E)	18	#4	14' 5"	—
e1(E)	30	#4	8' 9"	—
e2(E)	12	#4	16' 0"	—
b(E)	10	#5	8' 9"	—
b1(E)	10	#8	8' 9"	—
CONCRETE REMOVAL			CU YD	12.3
CONCRETE SUPERSTR.			CU YD	12.3
REINFORCEMENT BARS (EPOXY COATED)			LBS	800

MODEL: Default
FILE NAME: \\CENTRAL\B\OPERATIONS\Bridges\Bridges\CAD\72L48 - 0650002 - parapetplan sheet.dgn

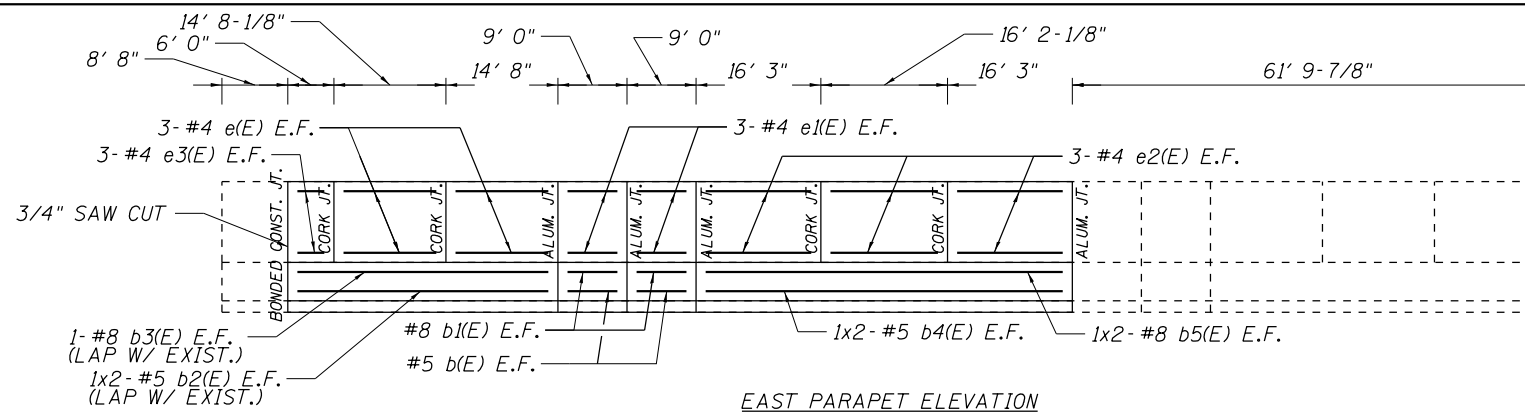
USER NAME = dudleybm	DESIGNED -	REVISED -
PLOT SCALE = 100.0000' / in.	DRAWN -	REVISED -
PLOT DATE = 10/10/2019	CHECKED -	REVISED -
	DATE -	REVISED -

**STATE OF ILLINOIS
DEPARTMENT OF TRANSPORTATION**

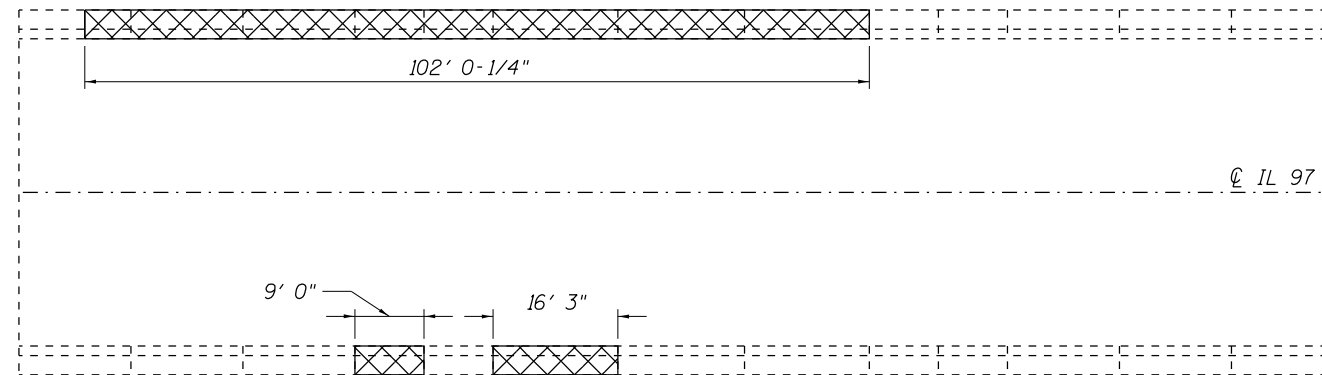
**UNIT I PLAN & ELEVATION
SN 065-0002**

SCALE: SHEET 3 OF 5 SHEETS STA. TO STA.

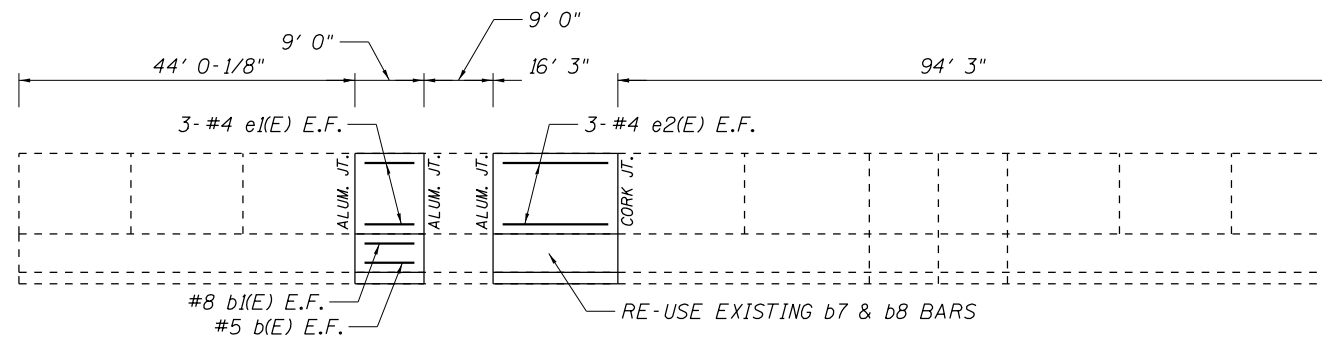
F.A.P. RTE.	SECTION	COUNTY	TOTAL SHEETS	SHEET NO.
34	(2) BRR	MENARD	10	8
ILLINOIS FED. AID PROJECT			CONTRACT NO. 72L48	



EAST PARAPET ELEVATION



REMOVAL PLAN



WEST PARAPET ELEVATION



GENERAL NOTES:

1. CONCRETE REMOVAL SHALL TERMINATE AT EXISTING PARAPET JOINTS UNLESS OTHERWISE SHOWN. VERTICAL REMOVAL LIMITS THAT DO NOT CORRESPOND WITH EXISTING JOINTS SHALL BE SAW CUT 3/4" DEEP PRIOR TO CONCRETE REMOVAL.
2. EXISTING VERTICAL REINFORCING AND HORIZONTAL REINFORCING EXTENDING INTO THE REMOVAL AREA SHALL BE LEFT IN PLACE AND RE-USED. ALL OTHER EXISTING HORIZONTAL REINFORCING SHALL BE REMOVED AND REPLACED. PROPOSED HORIZONTAL BARS SHALL BE LAPPED WITH EXISTING BARS EXTENDING INTO THE REMOVAL AREA.
3. PLACEMENT OF PROPOSED REINFORCING STEEL SHALL BE PER THE PARAPET DETAILS ON SHEET 2 OF 5.
4. PARAPET JOINTS SHALL BE PLACED AT EXISTING LOCATIONS AND PER THE PARAPET DETAILS ON SHEET 2 OF 5.

UNIT II BILL OF MATERIAL

BAR	NO.	SIZE	LENGTH	SHAPE
e(E)	12	#4	14' 5"	—
e1(E)	18	#4	8' 9"	—
e2(E)	24	#4	16' 0"	—
e3(E)	6	#4	5' 9"	—
b(E)	6	#5	8' 9"	—
b1(E)	6	#8	8' 9"	—
b2(E)	4	#5	19' 1"	—
b3(E)	2	#8	35' 1"	—
b4(E)	4	#5	25' 9"	—
b5(E)	4	#8	27' 2"	—
CONCRETE REMOVAL			CU YD	12.9
CONCRETE SUPERSTR.			CU YD	12.9
REINFORCEMENT BARS (EPOXY COATED)			LBS	1360

MODEL: Default
 FILE NAME: \\CENTRALDB\OPERATIONS\Bridges\Bridges\CAD\72L48 - 0650002 - parapet\brnshrec.dgn

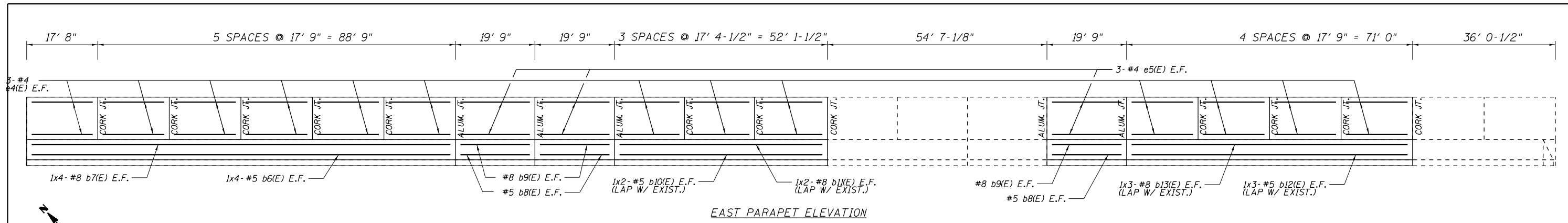
USER NAME = dudleybm	DESIGNED -	REVISED -
	DRAWN -	REVISED -
PLOT SCALE = 100.0000' / in.	CHECKED -	REVISED -
PLOT DATE = 10/10/2019	DATE -	REVISED -

STATE OF ILLINOIS
DEPARTMENT OF TRANSPORTATION

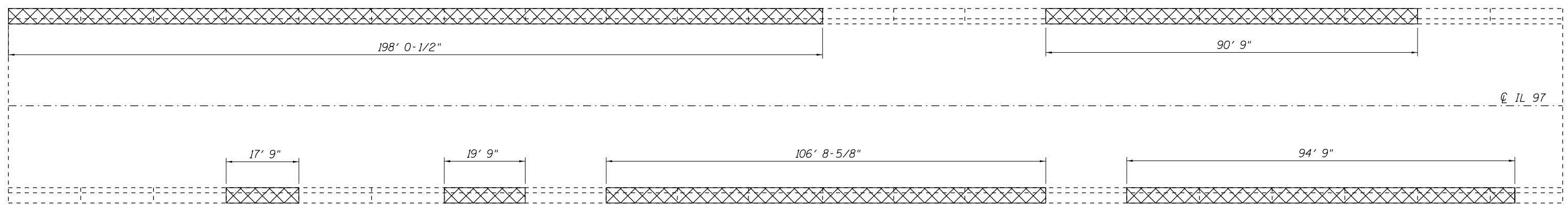
UNIT II PLAN & ELEVATION
SN 065-0002

SCALE: SHEET 4 OF 5 SHEETS STA. TO STA.

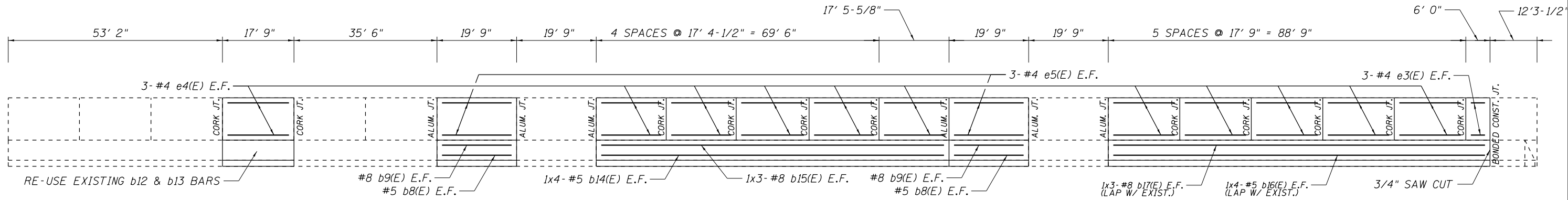
F.A.P. RTE.	SECTION	COUNTY	TOTAL SHEETS	SHEET NO.
34	(2) BRR	MENARD	10	9
ILLINOIS FED. AID PROJECT			CONTRACT NO. 72L48	



EAST PARAPET ELEVATION



REMOVAL PLAN



WEST PARAPET ELEVATION



MIN. BAR LAP
 #5 BAR = 3' 0"
 #8 BAR = 5' 11"

GENERAL NOTES:

1. CONCRETE REMOVAL SHALL TERMINATE AT EXISTING PARAPET JOINTS UNLESS OTHERWISE SHOWN. VERTICAL REMOVAL LIMITS THAT DO NOT CORRESPOND WITH EXISTING JOINTS SHALL BE SAW CUT 3/4" DEEP PRIOR TO CONCRETE REMOVAL.
2. EXISTING VERTICAL REINFORCING AND HORIZONTAL REINFORCING EXTENDING INTO THE REMOVAL AREA SHALL BE LEFT IN PLACE AND RE-USED. ALL OTHER EXISTING HORIZONTAL REINFORCING SHALL BE REMOVED AND REPLACED. PROPOSED HORIZONTAL BARS SHALL BE LAPPED WITH EXISTING BARS EXTENDING INTO THE REMOVAL AREA.
3. PLACEMENT OF PROPOSED REINFORCING STEEL SHALL BE PER THE PARAPET DETAILS ON SHEET 2 OF 5.
4. PARAPET JOINTS SHALL BE PLACED AT EXISTING LOCATIONS AND PER THE PARAPET DETAILS ON SHEET 2 OF 5.

UNIT III BILL OF MATERIAL

BAR	NO.	SIZE	LENGTH	SHAPE	BAR	NO.	SIZE	LENGTH	SHAPE
b6(E)	8	#5	28' 10"	—	e3(E)	6	#4	5' 9"	—
b7(E)	8	#8	31' 0"	—	e4(E)	144	#4	17' 6"	—
b8(E)	10	#5	19' 6"	—	e5(E)	30	#4	19' 6"	—
b9(E)	10	#8	19' 6"	—					
b10(E)	4	#5	27' 5"	—					
b11(E)	4	#8	28' 11"	—					
b12(E)	6	#5	25' 7"	—					
b13(E)	6	#8	27' 7"	—					
b14(E)	8	#5	24' 3"	—	PROTECTIVE SHIELD		SQ YD	236	
b15(E)	6	#8	32' 11"	—	CONCRETE REMOVAL		CU YD	53.4	
b16(E)	8	#5	26' 0"	—	CONCRETE SUPERSTR.		CU YD	53.4	
b17(E)	8	#8	35' 6"	—	REINFORCEMENT BARS (EPOXY COATED)		LBS	6270	

MODEL: Default
 FILE NAME: \\CENTRALDB\OPERATIONS\Bridges\BldgPlans_CAD\072L48_0650002_parapetbldgsheet.dgn

USER NAME = dudleybm	DESIGNED -	REVISED -
PLOT SCALE = 100.0000' / in.	DRAWN -	REVISED -
PLOT DATE = 10/10/2019	CHECKED -	REVISED -
	DATE -	REVISED -

STATE OF ILLINOIS
 DEPARTMENT OF TRANSPORTATION

UNIT III PLAN & ELEVATION
 SN 065-0002

SCALE: SHEET 5 OF 5 SHEETS STA. TO STA.

F.A.P. RTE.	SECTION	COUNTY	TOTAL SHEETS	SHEET NO.
34	(2) BRR	MENARD	10	10
CONTRACT NO. 72L48			ILLINOIS FED. AID PROJECT	