

060

01-17-2020 LETTING ITEM 060

STATE OF ILLINOIS
DEPARTMENT OF TRANSPORTATION

**PROPOSED
HIGHWAY PLANS**

FAP ROUTE 558 (IL RTE. 100)
SECTION 124,4,5RS-3
PROJECT STP-H01K(139)
DESIGN OVERLAY AND
ADA IMPROVEMENT
CALHOUN COUNTY

C-98-204-18

F.A.P. RTE.	SECTION	COUNTY	TOTAL SHEETS	SHEET NO.
558	124,4,5RS-3	CALHOUN	27	1
		ILLINOIS	CONTRACT NO. 76K36	

D-98-058-17



FOR INDEX OF SHEETS, SEE SHEET NO. 2

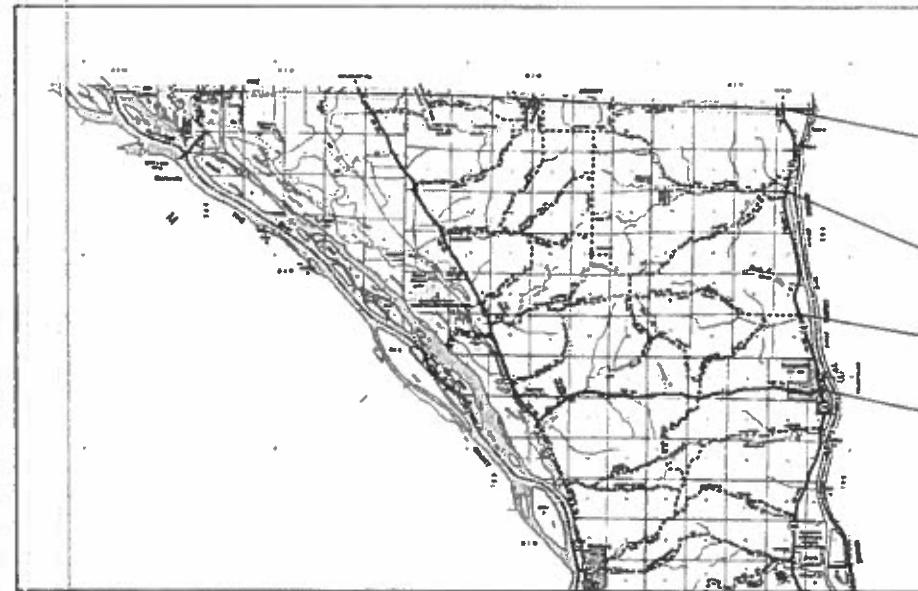
TRAFFIC DATA

LOCATION	NORTH OF IL 96	SOUTH OF PIKE COUNTY LINE
2015 ADT	1100 (ACTUAL)	550 (ACTUAL)
2018 ADT	1100 (ESTIMATED)	550 (ESTIMATED)
2038 ADT	1400 (ESTIMATED)	675 (ESTIMATED)
MU%	1.7	7.3
SUZ	1.8	7.3

BRIDGE OMISSION

STRUCTURE NO.	FEATURE CROSSED	LOCATION	DECK LENGTH
007-0020	SILVER CREEK	1.81 M.S. - 1.84 M.S.	168.96 FT.
007-0019	PANTHER CREEK	4.95 M.S. - 4.99 M.S.	211.20 FT.

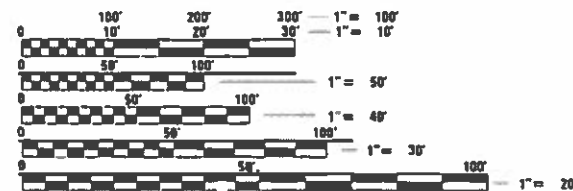
R 5 W R 4 W R 3 W R 2 W



END PROJECT - PIKE COUNTY LINE
7.13 M.S.
LAT: 39.3954361680032
LONG: -90.6277094851066

SN 007-0019 - BRIDGE OMISSION
4.95 M.S. TO 4.99 M.S.
SN 007-0020 - BRIDGE OMISSION
1.81 M.S. TO 1.84 M.S.

BEGIN PROJECT - AT N. ABUT. OF SN 007-0018
0.0 M.S.
LAT: 39.2952899801147
LONG: -90.6099223675575



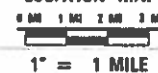
FULL SIZE PLANS HAVE BEEN PREPARED USING STANDARD ENGINEERING SCALES. REDUCED SIZED PLANS WILL NOT CONFORM TO STANDARD SCALES. IN MAKING MEASUREMENTS ON REDUCED PLANS, THE ABOVE SCALES MAY BE USED.

J.U.L.I.E.
JOINT UTILITY LOCATION INFORMATION FOR EXCAVATION
1-800-892-0123
OR 811

PROJECT ENGINEER: TIM PADGETT (618) 346-3325
PROJECT MANAGER: DIANA MURRAY (618) 346-3207

CONTRACT NO. 76K36

LOCATION MAP



GROSS LENGTH = 37646.4 FT. = 7.13 MILE
NET LENGTH = 37266.2 FT. = 7.06 MILE

STATE OF ILLINOIS
DEPARTMENT OF TRANSPORTATION

SUBMITTED *October 1 2019*
Keith Roberts
REGIONAL ENGINEER

Dec 10 2019
Paul C. [Signature]
ENGINEER OF DESIGN AND ENVIRONMENT

Dec 10 2019
Paul C. [Signature]
DIRECTOR OF HIGHWAYS PROJECT IMPLEMENTATION

PRINTED BY THE AUTHORITY
OF THE STATE OF ILLINOIS

INDEX OF SHEETS

- 1 COVER
- 2 INDEX OF SHEETS, HIGHWAY STANDARDS, GENERAL NOTES & COMMITMENTS
- 3-5 SUMMARY OF QUANTITIES
- 6 LOCATION MAP
- 7-8 TYPICAL SECTIONS
- 9-11 SCHEDULE OF QUANTITIES
- 12-20 ADA INDEX OF SHEETS, STANDARDS, GENERAL NOTES & BILL OF MATERIALS
- 21-25 PLAT OF HIGHWAYS
- 26-27 BUTT JOINT DETAILS

STANDARDS

- 000001-07 STANDARD SYMBOLS, ABBREVIATIONS AND PATTERNS
- 001006 DECIMAL OF AN INCH AND OF A FOOT
- 424001-11 PERPENDICULAR CURB RAMPS FOR SIDEWALKS
- 606001-07 CONCRETE CURB TYPE B AND COMBINATION CONCRETE CURB AND GUTTER
- 701001-02 OFF-RD OPERATIONS, 2L, 2W, MORE THAN 15' (4.5m) AWAY
- 701006-05 OFF-RD OPERATIONS, 2L, 2W, 15' (4.5M) TO 24" (600MM) FROM PAVEMENT EDGE
- 701011-04 OFF-RD MOVING OPERATIONS, 2L, 2W, DAY ONLY
- 701201-05 LANE CLOSURE, 2L, 2W, DAY ONLY, FOR SPEEDS ≥ 45 MPH
- 701301-04 LANE CLOSURE, 2L, 2W SHORT TERM OPERATIONS
- 701306-04 LANE CLOSURE, 2L, 2W, SLOW MOVING OPERATIONS DAY ONLY, FOR SPEEDS ≥ 45 MPH
- 701311-03 LANE CLOSURE, 2L, 2W, MOVING OPERATIONS - DAY ONLY
- 701501-06 URBAN LANE CLOSURE, 2L, 2W, UNDIVIDED
- 701801-06 SIDEWALK, CORNER OR CROSSWALK CLOSURE
- 701901-08 TRAFFIC CONTROL DEVICES
- 720001-01 SIGN PANEL MOUNTING DETAILS
- 720006-04 SIGN PANEL ERECTING DETAILS
- 728001-01 TELESCOPING STEEL SIGN SUPPORT
- 780001-05 TYPICAL PAVEMENT MARKINGS
- 781001-04 TYPICAL APPLICATIONS RAISED REFLECTIVE PAVEMENT MARKERS

GENERAL NOTES

1. ILLINOIS STATE LAW REQUIRES A 48-HOUR NOTICE TO BE GIVEN TO ALL UTILITIES WITHIN THE PROJECT AREA BEFORE DIGGING. FIELD MARKING OF FACILITIES MAY BE OBTAINED BY CONTACTING J.U.L.I.E. OR FOR NON-MEMBERS, THE UTILITY COMPANY DIRECTLY. AGENCIES KNOWN TO HAVE FACILITIES WITHIN THE PROJECT AREA ARE AS FOLLOWS:

UTILITY	ABOVE GROUND	BELOW GROUND
*AMEREN ILLINOIS - (GAS & ELECTRIC)	X	X
*CALHOUN COUNTY RURAL WATER DISTRICT - (WATER)	X	X
*FRONTIER COMMUNICATIONS - (COMMUNICATIONS)	X	X
*ILLINOIS RURAL ELECTRIC COOPERATIVE - (ELECTRIC)	X	X
*VILLAGE OF KAMPSVILLE - (WATER)	X	X

MEMBERS OF J.U.L.I.E. (800-892-0123 OR 811) ARE INDICATED BY AN *. NON-JULIE MEMBERS MUST BE NOTIFIED INDIVIDUALLY.
2. THE CONTRACTOR AND THE ENGINEER SHALL BE AWARE THAT NO SURVEY WAS PERFORMED FOR THIS PROJECT, THE STATIONING, TOPOGRAPHY AND QUANTITIES SHOWN ON THESE PLANS WERE CREATED USING MICROFILM AND FIELD MEASUREMENTS. ALL SHALL BE ASSUMED TO BE APPROXIMATE. THE CONTRACTOR SHALL VERIFY DIMENSIONS AND CONDITIONS IN THE FIELD PRIOR TO CONSTRUCTION AND ORDERING OF MATERIALS.
3. PROPOSED PAVEMENT MARKING SHALL BE PLACED IN THE SAME LOCATION AS EXISTING AS DIRECTED BY THE ENGINEER.
4. NO OVERNIGHT LANE CLOSURES WILL BE PERMITTED.
5. FLAGGERS SHALL BE PRESENT DURING ALL CLOSURE HOURS INCLUDING LUNCH HOUR AND NO ADDITIONAL COMPENSATION SHALL BE ALLOWED.
6. THE PAVEMENT AND SIDEROAD WIDTHS VARY AND QUANTITIES WILL BE PAID ACCORDING TO EXACT WIDTHS AS MEASURED IN THE FIELD.
7. AN ESTIMATED QUANTITY OF 21,131 TONS OF CUTTINGS FROM THE HOT-MIX ASPHALT SURFACE REMOVAL OPERATION IS ANTICIPATED. WIDTHS AS MEASURED IN THE FIELD.
8. SHORT TERM PAVEMENT MARKING SHALL BE APPLIED TO MILLED, PRIMED, BINDER AND FINAL SURFACE. ONLY REMOVAL FROM FINAL SURFACE SHALL BE PAID FOR AS SHORT TERM PAVEMENT MARKING REMOVAL.
9. THE THICKNESS OF THE HMA MIXTURE SHOWN ON THE PLANS IS THE NOMINAL THICKNESS. DEVIATIONS FROM THE NOMINAL THICKNESS WILL BE PERMITTED WHEN SUCH DEVIATIONS OCCUR DUE TO IRREGULARITIES IN THE EXISTING SURFACE OR BASE ON WHICH THE HMA MIXTURE IS PLACED.

10. "ROAD CONSTRUCTION AHEAD" SIGNS SHALL BE PLACED AT THE BEGINNING OF THE PROJECT PLUS AT ALL INTERSECTING SIDE ROADS AND WILL BE INCLUDED IN THE TRAFFIC CONTROL PAY ITEMS. ALL CONSTRUCTION SIGNS SHALL BE 48" FLUORESCENT ORANGE.
11. NO ROADWAY PATCHES ARE ANTICIPATED AT THIS TIME. IF ANY ROADWAY PATCHING IS REQUIRED, IT SHALL BE DETERMINED BY THE ENGINEER AND PAID FOR ACCORDING TO ARTICLE 109.04.
12. ALL AREAS DISTURBED FOR ANY REASON SHALL BE PERMANENTLY SEEDED AND MULCHED AS DIRECTED BY THE ENGINEER.
13. AN EMPTIED MATERIAL TRANSFER DEVICE IS ALLOWED TO CROSS STRUCTURES SN 007-0018, SN 007-0020, SN 007-0019, SN 007-2413, SN 007-2414 AND SN 007-2415.
14. IF THE PROPOSED SURFACE REMOVAL ON THIS PROJECT PRODUCES A MILLED EDGE ANYWHERE GREATER THAN 1.5 INCHES OR IF THE PROPOSED RESURFACING RESULTS IN AN ELEVATION DIFFERENCE GREATER THAN 2 INCHES NEAR THE CENTERLINE BETWEEN ADJACENT OPEN LANES OR TRAFFIC. ONE OF THE FOLLOWING SHALL APPLY:
 - * THE CONTRACTOR SHALL ORGANIZE THE WORK TO AVOID THE ELEVATION DIFFERENCE MENTIONED ABOVE.
 - * THE CONTRACTOR SHALL CONSTRUCT A TEMPORARY HOT MIX ASPHALT WEDGE ALONG THE CENTERLINE TO AVOID THE ELEVATION DIFFERENCE MENTIONED ABOVE.
 - * THE CONTRACTOR SHALL CONSTRUCT A MILLED SLOPE EDGE (MINIMUM 1:3) ALONG THE CENTERLINE TO AVOID THE ELEVATION DIFFERENCES MENTIONED ABOVE.

THE COST OF THIS WORK SHALL BE INCLUDED IN THE COST PER SQUARE YARD FOR HOT-MIX ASPHALT SURFACE REMOVAL OF THE DEPTH SPECIFIED OR IN THE COST PER TON FOR THE HOT-MIX ASPHALT RESURFACING MIXES SPECIFIED IN THE PLANS.

COMMITMENTS

NONE

MIXTURE REQUIREMENTS

ROUTE	FAP 558
SECTION	124,4,5RS-3
COUNTY	CALHOUN
CONTRACT	76K36

DESCRIPTION	3P & ADA IMPROVEMENT - RESURFACING AND PATCHING - IL 100 FROM PIKE COUNTY LINE TO IL 96.
-------------	--

ADT (CONSTRUCTION YR):	1100
MU%	7.3
SU%	7.3
20 YR. ESAL'S:	0.53

MIXTURE USE	SURFACE	BINDER	PATCHING
AC/PG	PG 64-22	PG 64-22	PG 64-22
RAP % (MAX)	SEE SPECIAL PROVISION	SEE SPECIAL PROVISION	SEE SPECIAL PROVISION
DESIGN AIR VOIDS	4.0% @ Ndes=70	4.0% @ Ndes=70	4.0% @ Ndes=70
MIX COMPOSITION (GRADATION MIXTURE)	IL 9.5	IL 19.0	IL 19.0
FRICTION AGG	MIXTURE "C"	MIXTURE "B"	MIXTURE "B"
QUALITY MGMT PROGRAM	QCP	QCP	QC/QA

MIXTURE USE	SHOULDERS ≥ 2.25"	SHOULDERS < 2.25"
AC/PG	PG 64-22	PG 64-22
RAP % (MAX)	SEE SPECIAL PROVISION	SEE SPECIAL PROVISION
DESIGN AIR VOIDS	4.0% @ Ndes=30	4.0% @ Ndes=30
MIX COMPOSITION (GRADATION MIXTURE)	IL 19.0L	IL 9.5L
FRICTION AGG		
QUALITY MGMT PROGRAM	QC/QA	QC/QA

PLAN QUANTITIES FOR BITUMINOUS CONCRETE SURFACE COURSE ITEMS ARE CALCULATED USING A UNIT WEIGHT OF 112 LB/SQ YD/IN (59.8 KG/SQ M/25 MM THICKNESS).

CODE NO.	ITEM	UNIT	TOTAL QUANTITY	CONSTRUCTION CODE	
				ROADWAY 0005	ROADWAY 0021
				RURAL	RURAL
28100807	STONE DUMPED RIPRAP, CLASS A4	TON	769	769	
35101400	AGGREGATE BASE COURSE, TYPE B	TON	6		6
40600290	BITUMINOUS MATERIALS (TACK COAT)	POUND	67756	67756	
40600990	TEMPORARY RAMP	SQ YD	657	657	
40603085	HOT-MIX ASPHALT BINDER COURSE, IL-19.0, N70	TON	12648	12648	
40604052	HOT-MIX ASPHALT SURFACE COURSE, IL-9.5, MIX "C", N70	TON	8432	8432	
40800050	INCIDENTAL HOT-MIX ASPHALT SURFACING	TON	2		2
42400100	PORTLAND CEMENT CONCRETE SIDEWALK 4 INCH	SQ FT	589		589
42400800	DETECTABLE WARNINGS	SQ FT	62		62
44000100	PAVEMENT REMOVAL	SQ YD	14		14
44000164	HOT-MIX ASPHALT SURFACE REMOVAL, 3 3/4"	SQ YD	100622	100622	
44000600	SIDEWALK REMOVAL	SQ FT	322		322
48102100	AGGREGATE WEDGE SHOULDER, TYPE B	TON	714	714	
48203100	HOT-MIX ASPHALT SHOULDERS	TON	52	52	

80% FED
20% STATE

REV. - MS

FILE NAME =	USER NAME = murraydo	DESIGNED -	REVISED -	STATE OF ILLINOIS DEPARTMENT OF TRANSPORTATION	SUMMARY OF QUANTITIES	F.A.P. RTE.	SECTION	COUNTY	TOTAL SHEETS	SHEET NO.	
pw:\planroom.dot.illinois.gov\PIDOT\Documents\IDOT Offices\District 8\Projects\0876K36\0876K36\CAD\Drawings\0876K36-sht-plan.dgn		CHECKED -	REVISED -			558	124,4,5RS-3	CALHOUN	27	3	
MODELNAME	PLOT SCALE = 100.0000' / 1in.	DATE -	REVISED -			CONTRACT NO. 76K36		ILLINOIS FED. AID PROJECT			
	PLOT DATE = 10/9/2019					SCALE:	SHEET 1 OF 3 SHEETS	STA.	TO STA.		

CODE NO.	ITEM	UNIT	TOTAL QUANTITY	CONSTRUCTION CODE	
				ROADWAY 0005 RURAL	ROADWAY 0021 RURAL
				80% FED 20% STATE	
50901760	PIPE HANDRAIL	FOOT	16		16
67000400	ENGINEER'S FIELD OFFICE, TYPE A	CAL MO	5	5	
67100100	MOBILIZATION	L SUM	1	1	
70100450	TRAFFIC CONTROL AND PROTECTION, STANDARD 701201	L SUM	1	1	
70100460	TRAFFIC CONTROL AND PROTECTION, STANDARD 701306	L SUM	1	1	
70102620	TRAFFIC CONTROL AND PROTECTION, STANDARD 701501	L SUM	1	1	
70102640	TRAFFIC CONTROL AND PROTECTION, STANDARD 701801	L SUM	1		1
70103815	TRAFFIC CONTROL SURVEILLANCE	CAL DA	4		4
70300100	SHORT TERM PAVEMENT MARKING	FOOT	14360	14360	
70300150	SHORT TERM PAVEMENT MARKING REMOVAL	SQ FT	1216	1216	
70300220	TEMPORARY PAVEMENT MARKING - LINE 4"	FOOT	96793	96793	
72400100	REMOVE SIGN PANEL ASSEMBLY - TYPE A	EACH	2		2
72400200	REMOVE SIGN PANEL ASSEMBLY - TYPE B	EACH	1		1
* 72400500	RELOCATE SIGN PANEL ASSEMBLY - TYPE A	EACH	2		2

* SPECIALTY ITEM

FILE NAME =	USER NAME = murrayda	DESIGNED -	REVISED -	STATE OF ILLINOIS DEPARTMENT OF TRANSPORTATION	SUMMARY OF QUANTITIES				F.A.P. RTE.	SECTION	COUNTY	TOTAL SHEETS	SHEET NO.
p:\planroom.dot.illinois.gov\PIDOT\Documents\IDOT Offices\District 8\Projects\0876K36\0876K36\Drawings\CADsheets\0876K36-sht-plan.dgn	30/09/2019	CHECKED -	REVISED -						558	124,4,5RS-3	CALHOUN	27	4
\$MODELNAME\$	PLOT SCALE = 100.0000' / in.	DATE -	REVISED -		SCALE:	SHEET 2	OF 3	SHEETS	STA.	TO STA.	ILLINOIS FED. AID PROJECT		
	PLOT DATE = 10/9/2019	DATE -	REVISED -								CONTRACT NO. 76K36		

80% FED
20% STATE

CONSTRUCTION CODE

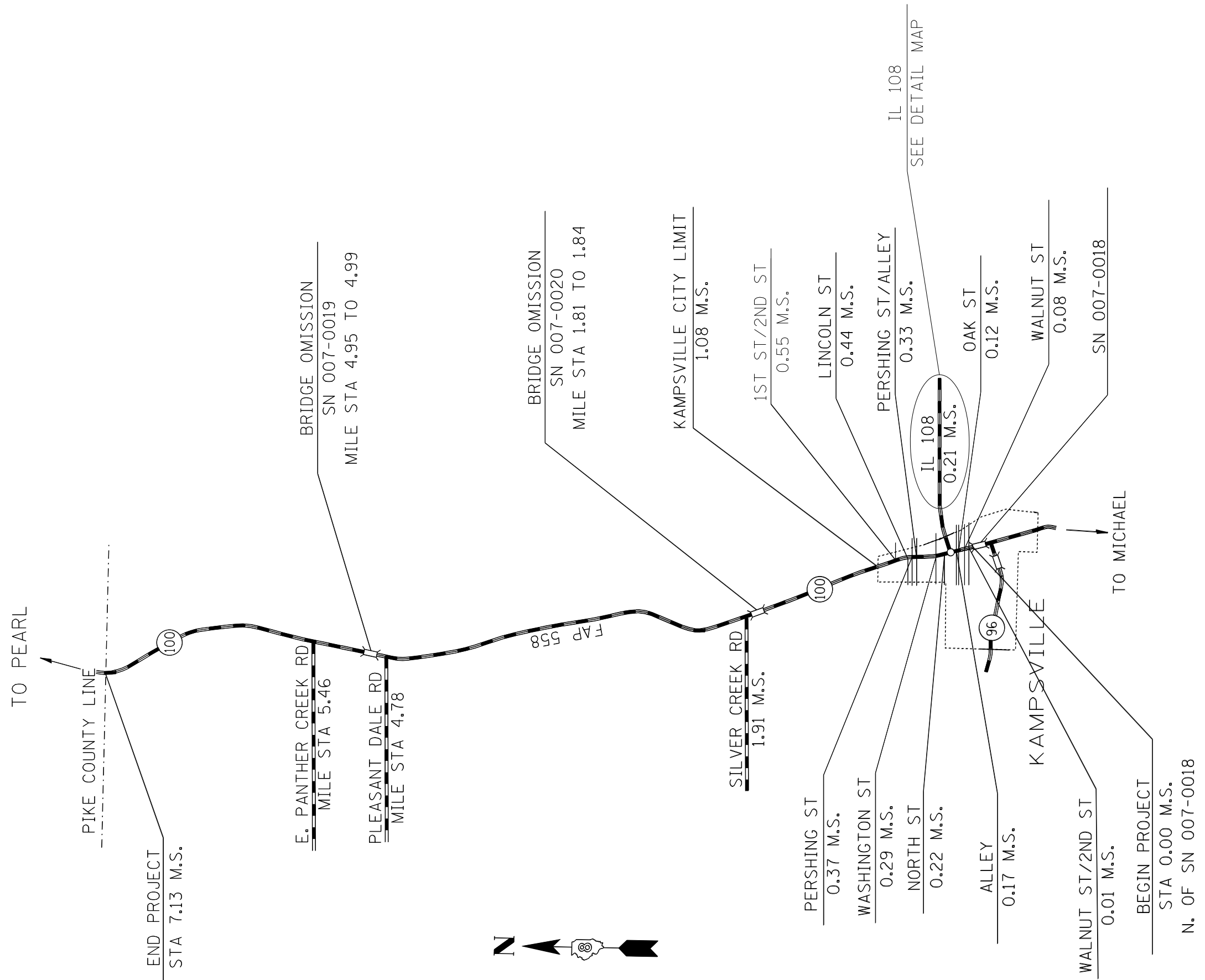
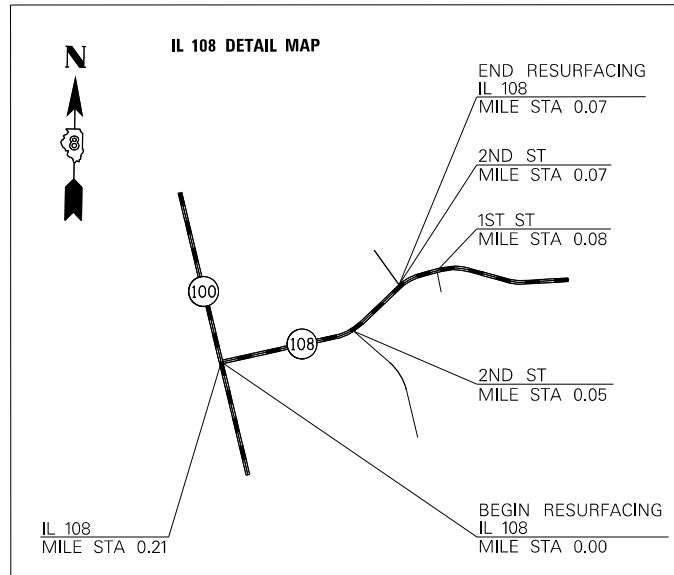
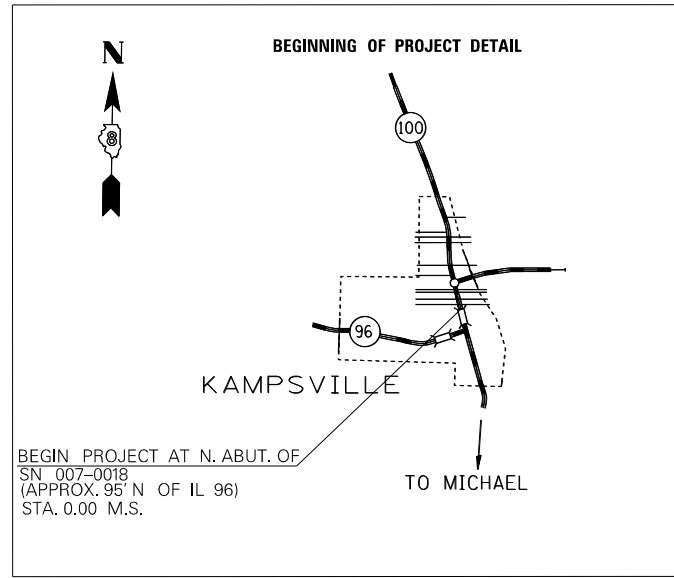
CODE NO.	ITEM	UNIT	TOTAL QUANTITY	CONSTRUCTION CODE	
				ROADWAY 0005 RURAL	ROADWAY 0021 RURAL
* 72400600	RELOCATE SIGN PANEL ASSEMBLY - TYPE B	EACH	1		1
* 78000200	THERMOPLASTIC PAVEMENT MARKING - LINE 4"	FOOT	96793	96793	
* 78100100	RAISED REFLECTIVE PAVEMENT MARKER	EACH	466	466	
78300200	RAISED REFLECTIVE PAVEMENT MARKER REMOVAL	EACH	466	466	
X7030005	TEMPORARY PAVEMENT MARKING REMOVAL	SQ FT	32287	32287	
Z0005305	BOX CULVERTS TO BE CLEANED	FOOT	35	35	
Z0007430	TEMPORARY SIDEWALK	SQ FT	81		81
Z0013798	CONSTRUCTION LAYOUT	L SUM	1		1
∅ Z0076600	TRAINEES	HOUR	1500	1500	
Z0033700	LONGITUDINAL JOINT SEALANT	FOOT	37642	37642	
∅ Z0076604	TRAINEES TRAINING PROGRAM GRADUATE	HOUR	1500	1500	
Z0034105	MATERIAL TRANSFER DEVICE	TON	21080	21080	

* SPECIALTY ITEM

∅ 0042

REV. - MS

FILE NAME =	USER NAME = murrayda	DESIGNED -	REVISED -	STATE OF ILLINOIS DEPARTMENT OF TRANSPORTATION	SUMMARY OF QUANTITIES				F.A.P. RTE.	SECTION	COUNTY	TOTAL SHEETS	SHEET NO.
p:\planroom.dot.illinois.gov\PIDOT\Documents\IDOT Offices\District 8\Projects\0876K36\0876K36-CAD\Drawings\0876K36-sht-plan.dgn		CHECKED -	REVISED -						558	124,4,5RS-3	CALHOUN	27	5
\$MODELNAME\$	PLOT SCALE = 100.0000' / 1in.	DATE -	REVISED -		SCALE: SHEET 3 OF 3 SHEETS STA. TO STA.				CONTRACT NO. 76K36				
	PLOT DATE = 10/9/2019								ILLINOIS FED. AID PROJECT				



NOT TO SCALE

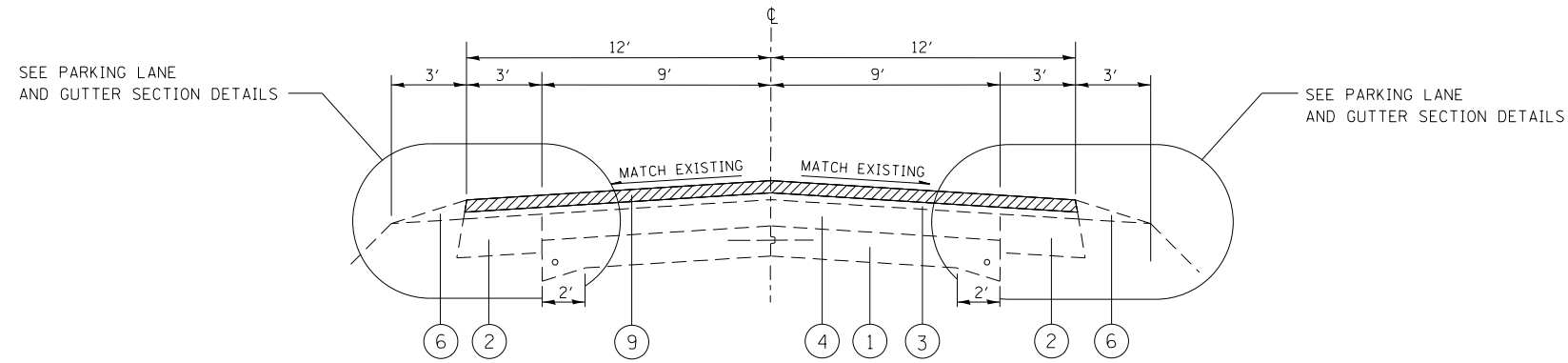
FILE NAME =	USER NAME = murrayda	DESIGNED -	REVISED -
p:\planroom.dot.illinois.gov\PIDOT\Documents\IDOT Offices\District 8\Projects\0876K36\DRAWING\CAD\Sheets\0876K36-sht-plan.dgn		REVISION	REVISED -
\$MODELNAME\$	PLOT SCALE = 100.0000' / in.	CHECKED -	REVISED -
	PLOT DATE = 9/30/2019	DATE -	REVISED -

STATE OF ILLINOIS
DEPARTMENT OF TRANSPORTATION

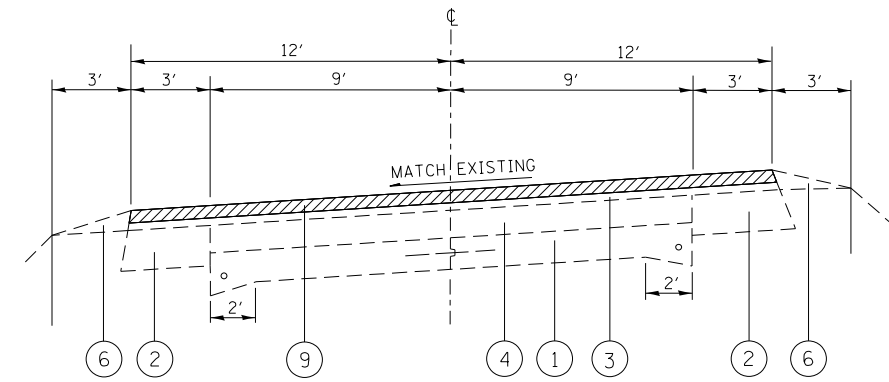
LOCATION MAP

SCALE: SHEET 1 OF 1 SHEETS STA. TO STA.

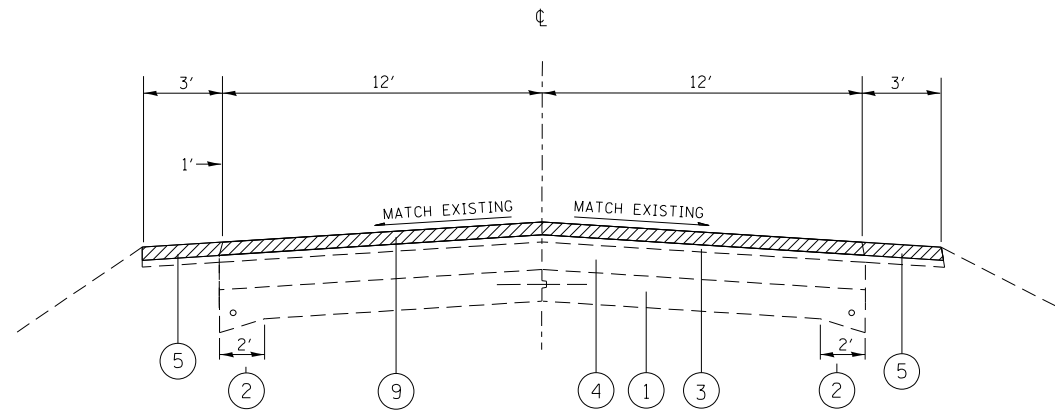
F.A.P. RTE.	SECTION	COUNTY	TOTAL SHEETS	SHEET NO.
558	124,4,5RS-3	CALHOUN	27	6
CONTRACT NO. 76K36			ILLINOIS FED. AID PROJECT	



EXISTING TANGENT SECTION
 IL 100
 0.00 MILE STA. TO 1.81 MILE STA.
 1.84 MILE STA. TO 4.95 MILE STA.
 4.99 MILE STA. TO 7.13 MILE STA.



EXISTING SUPERELEVATED SECTION
 IL 100
 WITHIN PROJECT LIMITS N. OF KAMPSVILLE



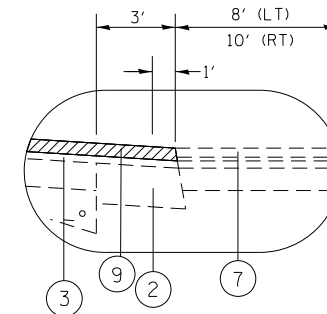
EXISTING TANGENT SECTION
 IL 108 (FERRY ROAD)
 0.000 MILE STA. TO 0.069 MILE STA.
 (MILE STA. ALONG IL 108)

HOT-MIX ASPHALT SURFACE REMOVAL

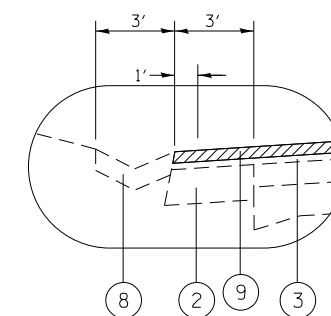


LEGEND

- ① EXISTING CONCRETE PAVEMENT (9''-6''-9'')
- ② EXISTING BASE COURSE WIDENING (BITUMINOUS), 9''
- ③ EXISTING LEVELING BINDER, TYPE 2, 1''
- ④ EXISTING BITUMINOUS OVERLAY ±6''
- ⑤ EXISTING HOT-MIX ASPHALT SHOULDERS
- ⑥ EXISTING AGGREGATE WEDGE, TYPE B
- ⑦ EXISTING PARKING LANE
- ⑧ EXISTING TYPE A GUTTER
- ⑨ PROPOSED HOT-MIX ASPHALT SURFACE REMOVAL, 3-3/4''
- ⑩ PROPOSED HOT-MIX BINDER COURSE, MIX "B", IL-19.0, N70, 2-1/4''
- ⑪ PROPOSED BITUMINOUS MATERIALS (TACK COAT)
- ⑫ PROPOSED HOT-MIX ASPHALT SURFACE COURSE, MIX "C", N70, 1-1/2''
- ⑬ PROPOSED HOT-MIX ASPHALT SHOULDERS, 3-3/4''
- ⑭ PROPOSED AGGREGATE WEDGE SHOULDERS, TYPE B
- ⑮ PROPOSED THERMOPLASTIC PAVEMENT MARKING - LINE 4''
- ⑯ PROPOSED STONE DUMPED RIPRAP, CLASS A4
- ⑰ PROPOSED LONGITUDINAL JOINT SEALANT



PARKING LANES
 0.150 MILE STA. TO 0.218 MILE STA. (LT)
 0.121 MILE STA. TO 0.233 MILE STA. (RT)



GUTTER SECTION
 0.598 MILE STA. TO 1.046 MILE STA. (LT)

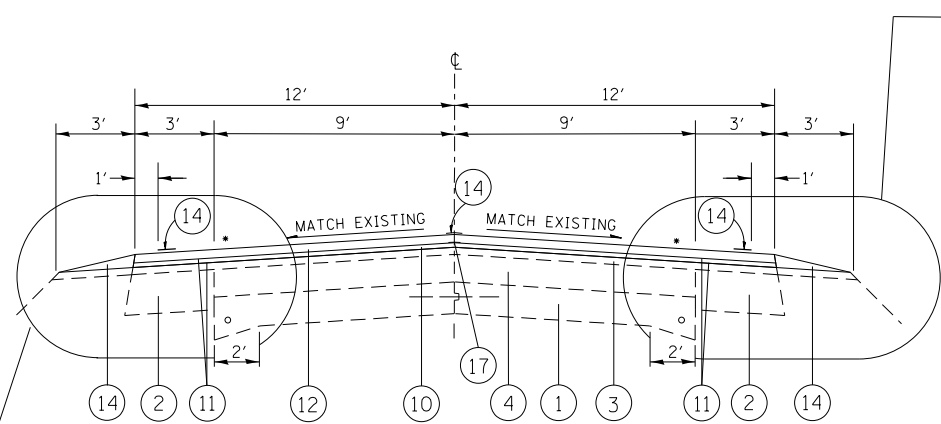
FILE NAME =	USER NAME = murrayda	DESIGNED -	REVISED -
pw:\planroom.dot.illinois.gov\PIDOT\Documents\IDOT Offices\District 8\Projects\0876K36\BRAND\CAD\Sheets\0876K36-sht-plan.dgn		CHECKED -	REVISED -
\$MODELNAME\$	PLOT DATE = 10/9/2019	DATE -	REVISED -

**STATE OF ILLINOIS
 DEPARTMENT OF TRANSPORTATION**

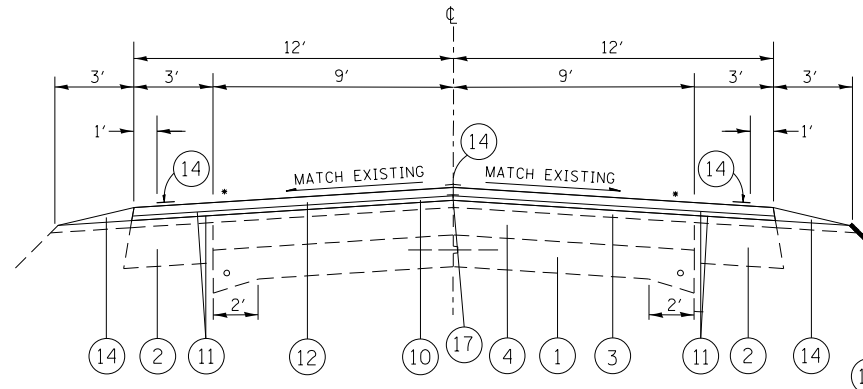
TYPICAL SECTIONS

SCALE: SHEET 1 OF 2 SHEETS STA. TO STA.

F.A.P. RTE.	SECTION	COUNTY	TOTAL SHEETS	SHEET NO.
558	124,4,5RS-3	CALHOUN	27	7
CONTRACT NO. 76K36				
ILLINOIS FED. AID PROJECT				



PROPOSED TANGENT SECTION
 IL 100
 0.00 MILE STA. TO 1.81 MILE STA.
 1.84 MILE STA. TO 4.84 MILE STA.
 4.92 MILE STA. TO 4.95 MILE STA.
 4.99 MILE STA. TO 7.13 MILE STA.



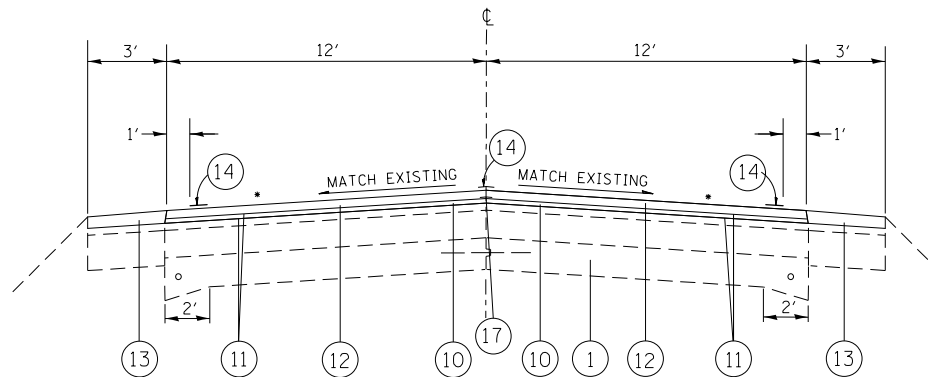
PROPOSED TYPICAL SECTION
 IL 100
 4.84 MILE STA. TO 4.92 MILE STA.

DETAIL A

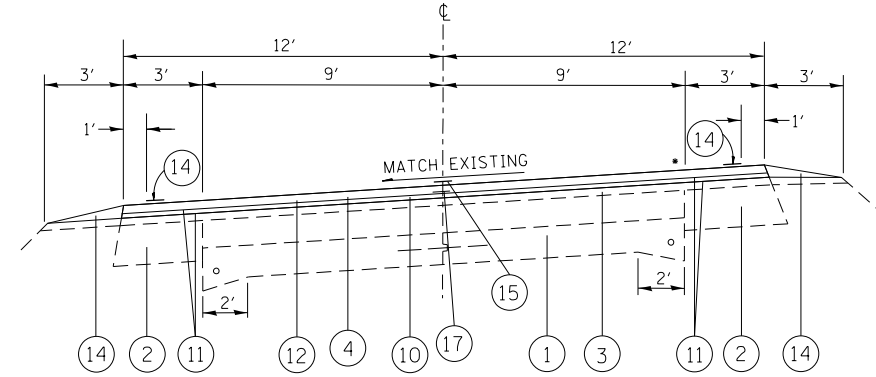
DETAIL A



SEE PARKING LANE AND GUTTER SECTION DETAILS

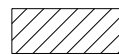


PROPOSED TANGENT SECTION
 IL 108 (FERRY ROAD)
 0.00 MILE STA. TO 0.069 MILE STA.
 (MILE STA. ALONG IL 108)



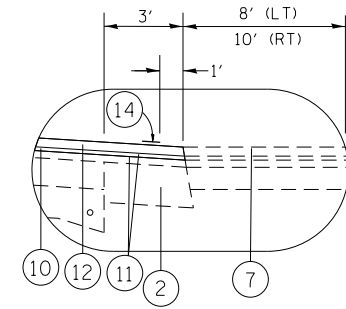
PROPOSED SUPERELEVATED SECTION
 IL 100
 WITHIN PROJECT LIMITS N. OF KAMPSVILLE

HOT-MIX ASPHALT SURFACE REMOVAL

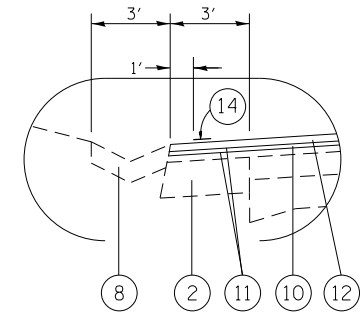


LEGEND

- ① EXISTING CONCRETE PAVEMENT (9'-6"-9")
- ② EXISTING BASE COURSE WIDENING (BITUMINOUS), 9"
- ③ EXISTING LEVELING BINDER, TYPE 2, 1"
- ④ EXISTING BITUMINOUS OVERLAY ±6"
- ⑤ EXISTING HOT-MIX ASPHALT SHOULDERS
- ⑥ EXISTING AGGREGATE WEDGE, TYPE B
- ⑦ EXISTING PARKING LANE
- ⑧ EXISTING TYPE A GUTTER
- ⑨ PROPOSED HOT-MIX ASPHALT SURFACE REMOVAL, 3-3/4"
- ⑩ PROPOSED HOT-MIX BINDER COURSE, MIX "B", IL-19.0, N70, 2-1/4"
- ⑪ PROPOSED BITUMINOUS MATERIALS (TACK COAT)
- ⑫ PROPOSED HOT-MIX ASPHALT SURFACE COURSE, MIX "C", N70, 1-1/2"
- ⑬ PROPOSED HOT-MIX ASPHALT SHOULDERS, 3-3/4"
- ⑭ PROPOSED AGGREGATE WEDGE SHOULDERS, TYPE B
- ⑮ PROPOSED THERMOPLASTIC PAVEMENT MARKING - LINE 4"
- ⑯ PROPOSED STONE DUMPED RIPRAP, CLASS A4
- ⑰ PROPOSED LONGITUDINAL JOINT SEALANT



PARKING LANES
 0.150 MILE STA. TO 0.218 MILE STA. (LT)
 0.121 MILE STA. TO 0.233 MILE STA. (RT)



GUTTER SECTION
 0.598 MILE STA. TO 1.046 MILE STA. (LT)

FILE NAME =	USER NAME = murrayda	DESIGNED -	REVISED -
p:\planroom\dot.illinois.gov\PWIDOT\Documents\IDOT Offices\District 8\Projects\0876K36\0876K36\Drawings\CAD\Sheets\0876K36-sht-plan.dgn		CHECKED -	REVISED -
\$MODELNAME\$	PLOT DATE = 10/9/2019	DATE -	REVISED -

**STATE OF ILLINOIS
 DEPARTMENT OF TRANSPORTATION**

TYPICAL SECTIONS

SCALE: SHEET 2 OF 2 SHEETS STA. TO STA.

F.A.P. RTE.	SECTION	COUNTY	TOTAL SHEETS	SHEET NO.
558	124,4,5RS-3	CALHOUN	27	8
			CONTRACT NO. 76K36	
ILLINOIS FED. AID PROJECT				

RESURFACING SCHEDULE											
MILE STATION TO MILE STATION			DIMENSION	HMA SURFACE REMOVAL 3.75 "	BITUMINOUS MATERIALS (TACK COAT)	LONGITUDINAL JOINT SEALANT	HMA BINDER COURSE MIX B N70	HMA SURFACE COURSE MIX C N70	HMA SHOULDERS	AGGREGATE WEDGE SHOULDER TYPE B	
			WIDTH								
			FOOT	SQ YD	POUND	FOOT	TON	TON	TON	TON	
KAMPSVILLE											
0.000	-	0.010	24	141	95	53	17.7	11.8		1.0	
0.010		0.080	24	986	665	370	124.2	82.8		7.2	
0.080	-	0.120	24	563	380	211	71.0	47.3		4.1	
0.120	-	0.121	24	14	10	5	1.8	1.2		0.1	
0.121	-	0.150	24	408	276	153	51.4	34.3			
0.150		0.170	24	282	190	106	35.5	23.7			
0.170	-	0.210	24	563	380	211	71.0	47.3			
0.210	-	0.218	24	113	76	42	14.2	9.5			
0.218	-	0.220	24	28	19	11	3.5	2.4			
0.220	-	0.233	24	183	124	69	23.1	15.4			
0.233	-	0.310	24	1084	732	407	136.6	91.1		7.9	
0.310	-	0.330	24	282	190	106	35.5	23.7		2.1	
0.330	-	0.370	24	563	380	211	71.0	47.3		4.1	
0.370	-	0.440	24	986	665	370	124.2	82.8		7.2	
0.440	-	0.550	24	1549	1045	581	195.1	130.1		11.3	
0.550	-	0.598	24	676	456	253	85.2	56.8		4.9	
0.598	-	1.046	24	6308	4258	2365	794.8	529.9		46.0	
1.046	-	1.080	24	479	323	180	60.3	40.2		3.5	
RURAL											
1.080	-	1.810	24	10278	6938	3854	1295.1	863.4		74.9	
BRIDGE OMISSION											
1.840	-	1.910	24	986	665	370	124.2	82.8		7.2	
1.910	-	4.780	24	40410	27276	15154	5091.6	3394.4		294.7	
4.780	-	4.950	24	2394	1616	898	301.6	201.1		17.5	
BRIDGE OMISSION											
4.990	-	5.460	24	6618	4467	2482	833.8	555.9		48.3	
5.460	-	7.130	24	23514	15872	8818	2962.7	1975.1		171.5	
FERRY RD											
0.000	-	0.069	24	1217	657	365	122.6	81.8	51.1		
TOTAL:				100622	67756	37642	12648	8432	52	714	

TEMPORARY RAMP SCHEDULE									
LOCATION		DESCRIPTION	EXISTING MATERIAL	TEMPORARY RAMPS, 3.75"			TEMPORARY RAMPS, 1.50"		
MILE STATION	NAME			WIDTH	LENGTH	SQ YD	WIDTH	LENGTH	SQ YD
IL 100									
0.00	BEGIN OF PROJECT	MAINLINE	HMA	24	12.5	33.3	24	5	13.3
0.01	WALNUT ST/2ND ST	LEFT	HMA	32	2	7.1	32	2	7.1
0.01	WALNUT ST/2ND ST	RIGHT	HMA	45	2	10.0	45	2	10.0
0.08	WALNUT ST	LEFT	HMA	31	2	6.9	31	2	6.9
0.08	WALNUT ST	RIGHT	HMA	20	2	4.4	20	2	4.4
0.12	OAK ST	LEFT	HMA	50	2	11.1	50	2	11.1
0.12	OAK ST	RIGHT	HMA/OIL & CHIP	40	2	8.9	40	2	8.9
0.17	ALLEY	LEFT	HMA	16	2	3.6	16	2	3.6
0.17	ALLEY	RIGHT	HMA	16	2	3.6	16	2	3.6
0.21	IL 108 (FERRY RD)	RIGHT	HMA	50	2	11.1	50	2	11.1
0.22	NORTH ST	LEFT	HMA	65	2	14.4	65	2	14.4
0.29	WASHINGTON ST	LEFT	HMA/OIL & CHIP	38	2	8.4	38	2	8.4
0.29	WASHINGTON ST	RIGHT	HMA/OIL & CHIP	25	2	5.6	25	2	5.6
0.33	PERSHING ST	LEFT	HMA	33	2	7.3	33	2	7.3
0.33	PERSHING ST	RIGHT	HMA	19	2	4.2	19	2	4.2
0.37	PERSHING ST	LEFT	HMA	61	2	13.6	61	2	13.6
0.37	PERSHING ST	RIGHT	HMA	37	2	8.2	37	2	8.2
0.44	LINCOLN ST	LEFT	HMA	27	2	6.0	27	2	6.0
1.81	SN 007-0020	MAINLINE	HMA	24	12.5	33.3	24	5	13.3
1.84	SN 007-0020	MAINLINE	HMA	24	12.5	33.3	24	5	13.3
1.91	SILVER CREEK RD	LEFT	HMA	38	2.0	8.4	38	2	8.4
4.78	PLEASANT DALE RD	LEFT	HMA	50	2.0	11.1	50	2	11.1
4.95	SN 007-0019	MAINLINE	HMA	24	12.5	33.3	24	5	13.3
4.99	SN 007-0019	MAINLINE	HMA	24	12.5	33.3	24	5	13.3
5.46	E. PANTHER CREEK RD	LEFT	HMA	50	2.0	11.1	50	2	11.1
7.13	END OF PROJECT	MAINLINE	HMA	24	12.5	33.3	24	5	13.3
IL 108 (FERRY RD)									
0.069	END RESURFACING	MAINLINE	HMA	24.0	12.5	33.3	24.0	5	13.3
SUBTOTAL:						398.4	258.4		
TOTAL:						656.9			

RIPRAP SCHEDULE				
LOCATION	WIDTH	LENGTH	FILTER FABRIC	STONED DUMPED RIPRAP, CLASS 4A
MILE STATION	FOOT	FOOT	SQ YD	TON
4.84 - 4.92	25	415	1153	769
TOTAL			1153	769

BOX CULVERT SCHEDULE - (2 FT x 2 FT)	
LOCATION	BOX CULVERT TO BE CLEANED
MILE STATION	FOOT
1.41	35
TOTAL	35

PAVEMENT MARKING SCHEDULE															
MILE STATION TO MILE STATION	LENGTH	SHORT TERM PAVEMENT MARKING	TEMPORARY PAVEMENT MARKING				RAISED REFLECTIVE PAVEMENT MARKER REMOVAL	RAISED REFLECTIVE PAVEMENT MARKERS CRYSTAL	THERMOPLASTIC PAVEMENT MARKING				SHORT TERM PAVEMENT MARKING REMOVAL	TEMPORARY PAVEMENT MARKING REMOVAL	
			4" SKIP-DASH YELLOW	4" SOLID WHITE	4" SKIP-DASH YELLOW	NO PASSING ZONE			4" SOLID WHITE	4" SKIP-DASH YELLOW	NO PASSING ZONE				
						4" SOLID YELLOW					DIR	FOOT			4" SOLID YELLOW
FT	FOOT	FOOT	FOOT	DIR	FOOT	EACH	EACH	FOOT	FOOT	DIR	FOOT	SQ FT	SQ FT		
0.00 - 0.12	649	240	1298			8	8	1298	170			20	490		
0.12 - 0.13	45	40				1	1		20			4	7		
0.13 - 0.21	390	160	779			5	5	779	100			14	294		
0.21 - 0.22	47	40	47			1	1	47	20			4	23		
0.22 - 0.23	40	40	80			1	1	80	20			4	34		
0.23 - 0.25	68	40	68			1	1	68	20			4	30		
0.25 - 0.26	77	40	154			1	1	154	20			4	59		
0.26 - 0.29	41	40	41			1	1	41	20			4	21		
0.29 - 0.30	180	80	361			2	2	361	50			7	137		
0.30 - 0.33	41	40				1	1		20			4	7		
0.33 - 0.34	187	80	373			2	2	373	50			7	142		
0.34 - 0.37	19	40				0	0		10			4	4		
0.37 - 0.38	160	80	319			2	2	319	40			7	120		
0.38 - 0.55	66	40	66			1	1	66	20			4	29		
0.55 - 0.57	913	360	1826			11	11	1826	230			30	686		
0.57 - 0.84	66	40	66			1	1	66	20			4	29		
0.84 - 0.84	1434	560	2867			18	18	2867	360			47	1076		
0.84 - 1.81	12	40	12			0	0	12	10			4	8		
1.81 - 1.84	5123	1880	10246			64	64	10246	1290			157	3846		
1.84 - 1.91	370	160	739			5	5	739	100			14	280		
1.91 - 1.92	53	40	53			1	1	53	20			4	25		
1.92 - 2.16	1267	480	2534			16	16	2534	320			40	952		
2.16 - 2.37	1109	440	2218	NB	1109	14	14	2218	280	NB	1109	37	1203		
2.37 - 2.41	211	80	422	BOTH	422	3	3	422	60	BOTH	422	7	302		
2.41 - 2.57	845	320	1690	SB	845	11	11	1690	220	SB	845	27	919		
2.57 - 2.61	211	80	422	BOTH	422	3	3	422	60	BOTH	422	7	302		
2.61 - 2.76	792	320	1584	NB	792	10	10	1584	200	NB	792	27	859		
2.76 - 2.80	211	80	422	BOTH	422	3	3	422	60	BOTH	422	7	302		
2.80 - 2.98	950	360	1901	SB	950	12	12	1901	240	SB	950	30	1031		
2.98 - 4.40	7498	2760	14995		1880	94	94	14995	1880			230	5626		
4.40 - 4.60	1056	400	2112	NB	1056	13	13	2112	270	NB	1056	34	1146		
4.60 - 4.62	106	40	211	BOTH	211	1	1	211	30	BOTH	211	4	151		
4.62 - 4.87	1320	480	2640	SB	1320	17	17	2640	330	SB	1320	40	1430		
4.87 - 4.99	422	160	845		110	5	5	845	110			14	319		
4.99 - 5.46	2482	920	4963		630	31	31	4963	630			77	1865		
5.46 - 5.47	53	40	106		20	1	1	106	20			4	42		
5.47 - 6.25	4118	1520	8237		1030	51	51	8237	1030			127	3089		
6.25 - 6.45	1056	400	2112	NB	1056	13	13	2112	270	NB	1056	34	1146		
6.45 - 6.58	686	280	1373	BOTH	1373	9	9	1373	180	BOTH	1373	24	976		
6.58 - 6.76	950	360	1901	SB	950	12	12	1901	240	SB	950	30	1031		
6.76 - 6.98	1162	440	2323	NB	1162	15	15	2323	300	NB	1162	37	1262		
6.98 - 7.05	370	160	739	BOTH	739	5	5	739	100	BOTH	739	14	527		
7.05 - 7.13	422	160	845	SB	422	5	5	845	110	SB	422	14	460		
SUBTOTAL		14360	73991	9550	13253	466	466	73991	9550	13253	1216	32287			
TOTAL		14360	96793			466	466	96793			1216	32287			

ADA
INDEX OF SHEETS

SHEET NO.	ITEM
1	ADA BILL OF MATERIALS AND NOTES
2	SCHEDULE OF QUANTITIES
3-4	CONTROL POINTS
5-8	ADA SIDEWALK PLAN
9	CONSTRUCTION DETAILS ADA SIDEWALK

BILL OF MATERIAL

	ITEM	UNIT	TOTAL QUANTITY
	AGGREGATE BASE COURSE, TYPE B	TON	6
	INCIDENTAL HOT-MIX ASPHALT SURFACING	TON	2
(S)	PORTLAND CEMENT CONCRETE SIDEWALK 4 INCH	SQ FT	589
	DETECTABLE WARNINGS	SQ FT	62
	PAVEMENT REMOVAL	SQ YD	14
	SIDEWALK REMOVAL	SQ FT	322
	PIPE HANDRAIL	FOOT	16
	TRAFFIC CONTROL AND PROTECTION, STANDARD 701801	L SUM	1
	TRAFFIC CONTROL SURVEILLANCE	CAL DAY	4
*	REMOVE SIGN PANEL ASSEMBLY - TYPE A	EACH	2
*	REMOVE SIGN PANEL ASSEMBLY - TYPE B	EACH	1
*	RELOCATE SIGN PANEL ASSEMBLY - TYPE A	EACH	2
*	RELOCATE SIGN PANEL ASSEMBLY - TYPE B	EACH	1
(S)	TEMPORARY SIDEWALK	SQ FT	81
(S)	CONSTRUCTION LAYOUT	L SUM	1

(S) SEE SPECIAL PROVISIONS * SPECIALITY ITEM

ADA
GENERAL NOTES

- ALL EXISTING RIGHT OF WAY LINES SHOWN ON THE PLAN SHEETS ARE GRAPHICAL REPRESENTATIONS AND SHALL NOT BE USED AS A MEANS TO ESTABLISH OWNERSHIP. IN ALL MATTERS RELATING TO RIGHT OF WAY, THE PLAT OF HIGHWAYS SHALL BE THE CONTROLLING DOCUMENT.
- ALL TURF AREAS ADJACENT TO THE PROPOSED SIDEWALK CONSTRUCTION SHALL HAVE CLEAN EARTHEN BACKFILL MATERIAL PLACED AND SHALL BE FERTILIZED, SEEDED WITH CLASS 1A SEED MIXTURE AND MULCHED. THERE IS AN ESTIMATED QUANTITY OF 0.01 ACRE OF SEEDING REQUIRED FOR TURF RESTORATION IN THE PROPOSED SIDEWALK CONSTRUCTION AREAS.
- EARTH EXCAVATION WILL BE REQUIRED FOR CONSTRUCTION OF THE IMPROVEMENTS.
- THE CONTRACTOR SHALL VERIFY ALL DIMENSIONS AND CONDITIONS IN THE FIELD PRIOR TO CONSTRUCTION AND ORDERING OF MATERIALS.
- THE CONTRACTOR SHALL MAKE SUITABLE MEANS FROM EXISTING SHOULDERS, PAVEMENTS, ETC. TO THE PROPOSED SIDEWALK AS DIRECTED BY THE ENGINEER. THERE IS AN ESTIMATED QUANTITY OF 2 TON OF INCIDENTAL HMA SURFACE COURSE REQUIRED FOR TRANSITIONS AND PAVEMENT RESTORATION IN THE PROPOSED SIDEWALK CONSTRUCTION AREAS.
- SIDEWALK CLOSURE:

THE CONTRACTOR SHALL PROVIDE FOR THE SAFE ACCOMMODATION OF PEDESTRIAN TRAFFIC THROUGH THE WORK ZONE DURING CONSTRUCTION. THE CONTRACTOR SHOULD PLAN HIS/HER CONSTRUCTION SO THE DISRUPTION TO THE PEDESTRIAN FACILITIES WILL OCCUR IN THE SHORTEST PRACTICAL TIME POSSIBLE. IF SIDEWALKS ARE TO BE CLOSED FOR MORE THAN 5 CONTINUOUS DAYS, TEMPORARY SIDEWALK SHALL BE CONSTRUCTED, AS DIRECTED BY THE ENGINEER AND IN COMPLIANCE WITH HIGHWAY STANDARD 701801.

HIGHWAY STANDARDS

- 000001 - STANDARD SYMBOLS, ABBREVIATIONS AND PATTERNS
- 424001 - PERPENDICULAR CURB RAMPS FOR SIDEWALKS
- 606001 - CONCRETE CURB TYPE B AND COMBINATION CONCRETE CURB AND GUTTER
- 701501 - URBAN LANE CLOSURE, 2L, 2W, UNDIVIDED
- 701801 - SIDEWALK, CORNER OR CROSSWALK CLOSURE
- 701901 - TRAFFIC CONTROL DEVICES
- 720001 - SIGN PANEL MOUNTING DETAILS
- 720006 - SIGN PANEL ERECTION DETAILS
- 728001 - TELESCOPING STEEL SIGN SUPPORT



BENTON & ASSOCIATES, INC.
Consulting Engineers / Land Surveyors
1970 West Lafayette Ave. Jacksonville, IL 62650
Phone: 217-245-4146 Fax: 217-245-4149
IL Design Firm Registration No. 184-000852

FILE NAME =	USER NAME = murrayda	DESIGNED -	REVISED -	STATE OF ILLINOIS DEPARTMENT OF TRANSPORTATION	ADA BILL OF MATERIALS AND NOTES FAP ROUTE 558 (IL 100)	F.A.P. REE.	SECTION	COUNTY	TOTAL SHEETS	SHEET NO.	
p:\planroom.dot\illinois.gov\PIDOT\Documents\IDOT Offices\District 8\Projects\0876K36\BENTON\CAD\sheet\0876K36-sht-plan.dgn		CHECKED - WJS	REVISED -			558	124,4,5RS-3	CALHOUN	27	12	
\$MODELNAME\$	PLOT SCALE = 40.0000' / in.	DATE - 6/2018	REVISED -			CONTRACT NO. 76K36		ILLINOIS FED. AID PROJECT			
	PLOT DATE = 9/30/2019					SCALE:	SHEET 1 OF 9 SHEETS	STA.	TO STA.		

PAVEMENT & SIDEWALK REMOVAL SCHEDULE

LOCATION STATION TO STATION	PAVEMENT REMOVAL	SIDEWALK REMOVAL
	SQ YD	SQ FT
WEST SIDE FAP 558 NORTH SIDE BRIDGE SN 007-0018	3.3	
SW QUADRANT FAP 558 AND OAK STREET	1.8	
SE QUADRANT FAP 558 AND OAK STREET	5.2	92.2
SE QUADRANT FAP 558 AND MARQUETTE STREET	1.3	90.4
NE QUADRANT FAP 558 AND MARQUETTE STREET	2.0	
SOUTH SIDE FAP 761, EAST OF 2ND STREET		74.6
NORTH SIDE FAP 761, EAST OF 2ND STREET		64.7
TOTAL	13.6	321.9

PIPE HANDRAIL SCHEDULE

LOCATION STATION TO STATION	PIPE HANDRAIL
	FOOT
WEST SIDE FAP 558 NORTH SIDE BRIDGE SN 007-0018	15.9
TOTAL	15.9

SIGNAGE SCHEDULE

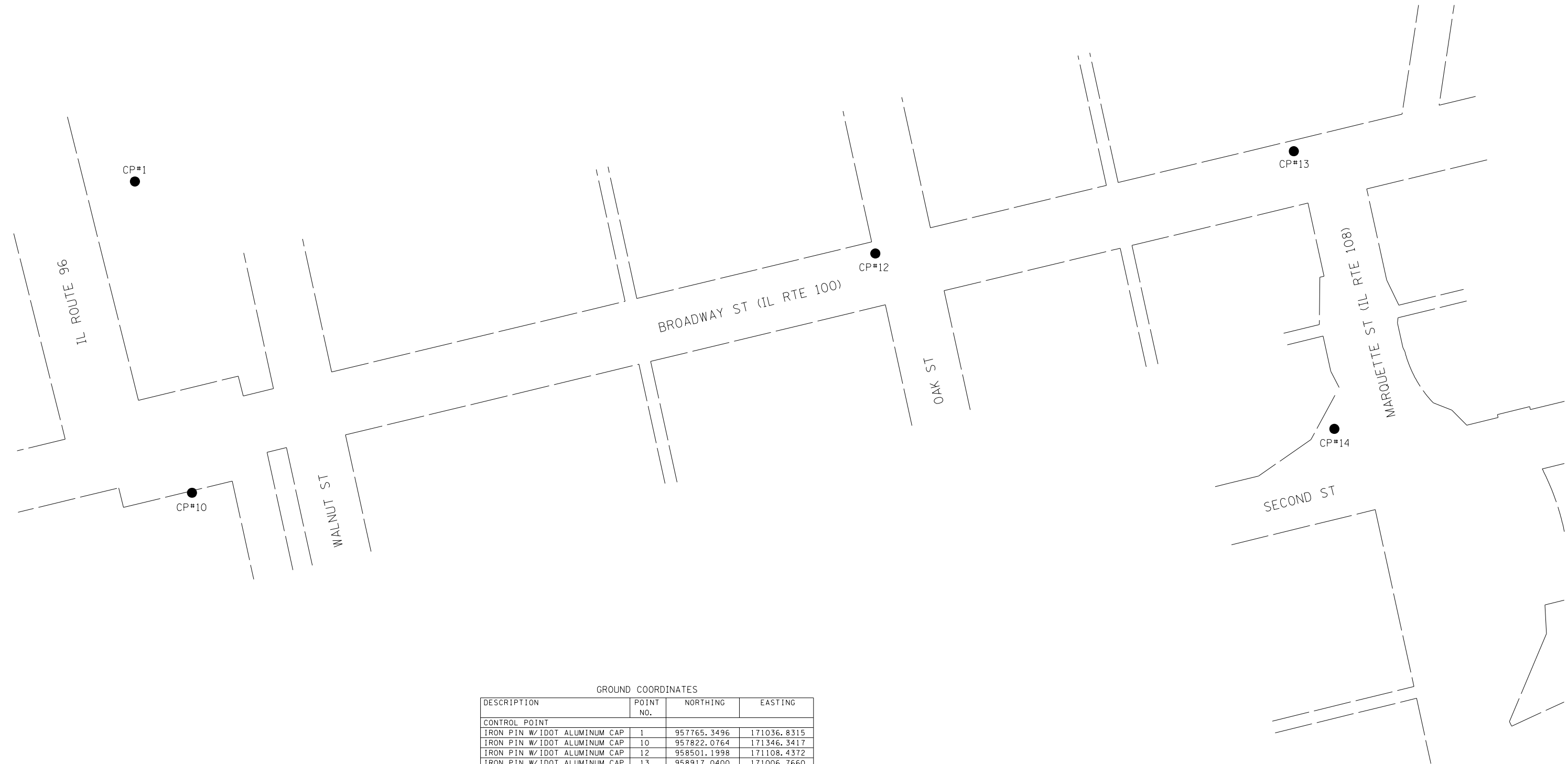
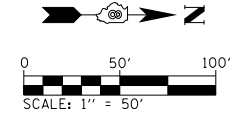
LOCATION STATION TO STATION	OFFSET FROM C.L.	REMOVE SIGN PANEL ASSEMBLY - TYPE A	REMOVE SIGN PANEL ASSEMBLY - TYPE B	RELOCATE SIGN PANEL ASSEMBLY - TYPE A	RELOCATE SIGN PANEL ASSEMBLY - TYPE B
	FEET	EACH	EACH	EACH	EACH
SW QUADRANT FAP 558 AND OAK STREET (STREET SIGN)	25.5 WEST	1		1	
NE QUADRANT FAP 558 AND MARQUETTE STREET (STOP SIGN)	31.7 EAST	1		1	
NE QUADRANT FAP 558 AND MARQUETTE STREET (ROUTE SIGN, ETC.)	31.4 EAST		1		1
TOTAL		2	1	2	1

SIDEWALK SCHEDULE

LOCATION STATION TO STATION	AGGREGATE BASE COURSE, TYPE B	INCIDENTAL HOT-MIX ASPHALT SURFACING	PC CONCRETE SIDEWALK 4 INCH	DETECTABLE WARNINGS
	TON	TON	SQ FT	SQ FT
WEST SIDE FAP 558 NORTH SIDE BRIDGE SN 007-0018	3.1	0.9	105.7	10.0
SW QUADRANT FAP 558 AND OAK STREET	0.3	0.1	40.0	8.0
SE QUADRANT FAP 558 AND OAK STREET	0.4	0.6	114.0	8.0
SE QUADRANT FAP 558 AND MARQUETTE STREET	0.3	0.1	94.8	8.0
NE QUADRANT FAP 558 AND MARQUETTE STREET	1.9	0.1	89.2	8.0
SOUTH SIDE FAP 761, EAST OF 2ND STREET			73.2	10.0
NORTH SIDE FAP 761, EAST OF 2ND STREET			71.7	10.0
TOTAL	6.0	1.8	588.6	62.0

BENTON & ASSOCIATES, INC.

FILE NAME =	USER NAME = murrayda	DESIGNED -	REVISED -	STATE OF ILLINOIS DEPARTMENT OF TRANSPORTATION	SCHEDULE OF QUANTITIES ADA SIDEWALK (KAMPSVILLE) FAP ROUTE 558 (IL RTE 100)	F.A.P. RTE.	SECTION	COUNTY	TOTAL SHEETS	SHEET NO.	
pw:\planroom.dot.illinois.gov\PIDOT\Documents\IDOT Offices\District 8\Projects\0876K36\BENTON\CAD\sheet\0876K36-sht-plan.dgn	PROJECT = 0876K36	CHECKED - WJS	REVISED -			558	124,4,5RS-3	CALHOUN	27	13	
\$MODELNAME\$	PLOT SCALE = 40.0000' / in.	DATE - 6/2018	REVISED -			CONTRACT NO. 76K36		ILLINOIS FED. AID PROJECT			
	PLOT DATE = 10/1/2019					SCALE:	SHEET 2 OF 9 SHEETS	STA.	TO STA.		



GROUND COORDINATES

DESCRIPTION	POINT NO.	NORTHING	EASTING
CONTROL POINT			
IRON PIN W/IDOT ALUMINUM CAP	1	957765.3496	171036.8315
IRON PIN W/IDOT ALUMINUM CAP	10	957822.0764	171346.3417
IRON PIN W/IDOT ALUMINUM CAP	12	958501.1998	171108.4372
IRON PIN W/IDOT ALUMINUM CAP	13	958917.0400	171006.7660
IRON PIN W/IDOT ALUMINUM CAP	14	958957.3310	171282.8350

BENTON & ASSOCIATES, INC.

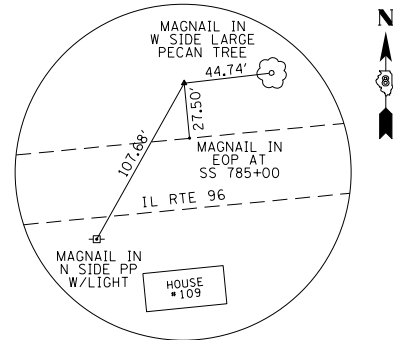
FILE NAME =	USER NAME = murrayda	DESIGNED -	REVISED -
p:\planroom\dot.illinois.gov\PIDOT\Documents\IDOT Offices\District 8\Projects\0876K36\BENTON\CAD\sheet\0876K36-sht-control		BY: WJS	DATE: 6/2018
\$MODELNAME\$	PLOT SCALE = 100.0000' / in.	CHECKED - WJS	REVISED -
	PLOT DATE = 10/1/2019	DATE - 6/2018	REVISED -

**STATE OF ILLINOIS
DEPARTMENT OF TRANSPORTATION**

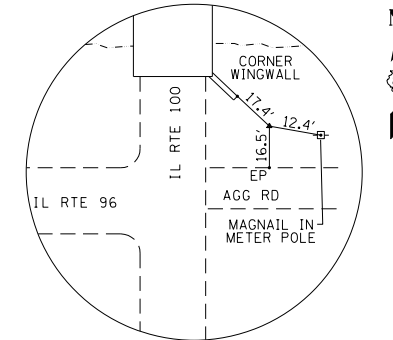
**CONTROL POINTS ADA SIDEWALK (KAMPSVILLE)
FAP ROUTE 558 (IL RTE 100)**

SCALE: SHEET 3 OF 9 SHEETS STA. TO STA.

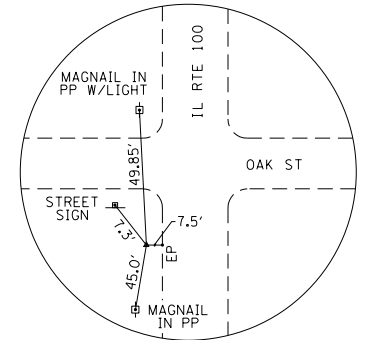
F.A.P. RTE.	SECTION	COUNTY	TOTAL SHEETS	SHEET NO.
558	124,4,5RS-3	CALHOUN	27	14
CONTRACT NO. 76K36				
ILLINOIS FED. AID PROJECT				



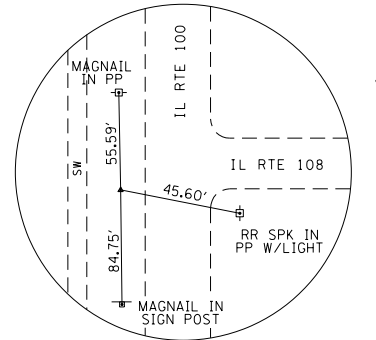
CP#1
IRON PIN
W/IDOT CAP



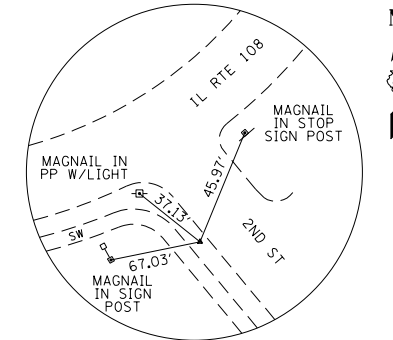
CP#10
IRON PIN
W/IDOT CAP



CP#12
IRON PIN
W/IDOT CAP



CP#13
IRON PIN
W/IDOT CAP



CP#14
IRON PIN
W/IDOT CAP

BENTON & ASSOCIATES, INC.

FILE NAME =	USER NAME = murrayda	DESIGNED -	REVISED -
p:\planroom\dot.illinois.gov\PIDOT\Documents\IDOT Offices\District 8\Projects\0876K36\BENTON\CAD\sheet\0876K36-sht-control	PROJECT = 0876K36	CHECKED - WJS	REVISED -
\$MODELNAME\$	PLOT DATE = 10/1/2019	DATE - 6/2018	REVISED -

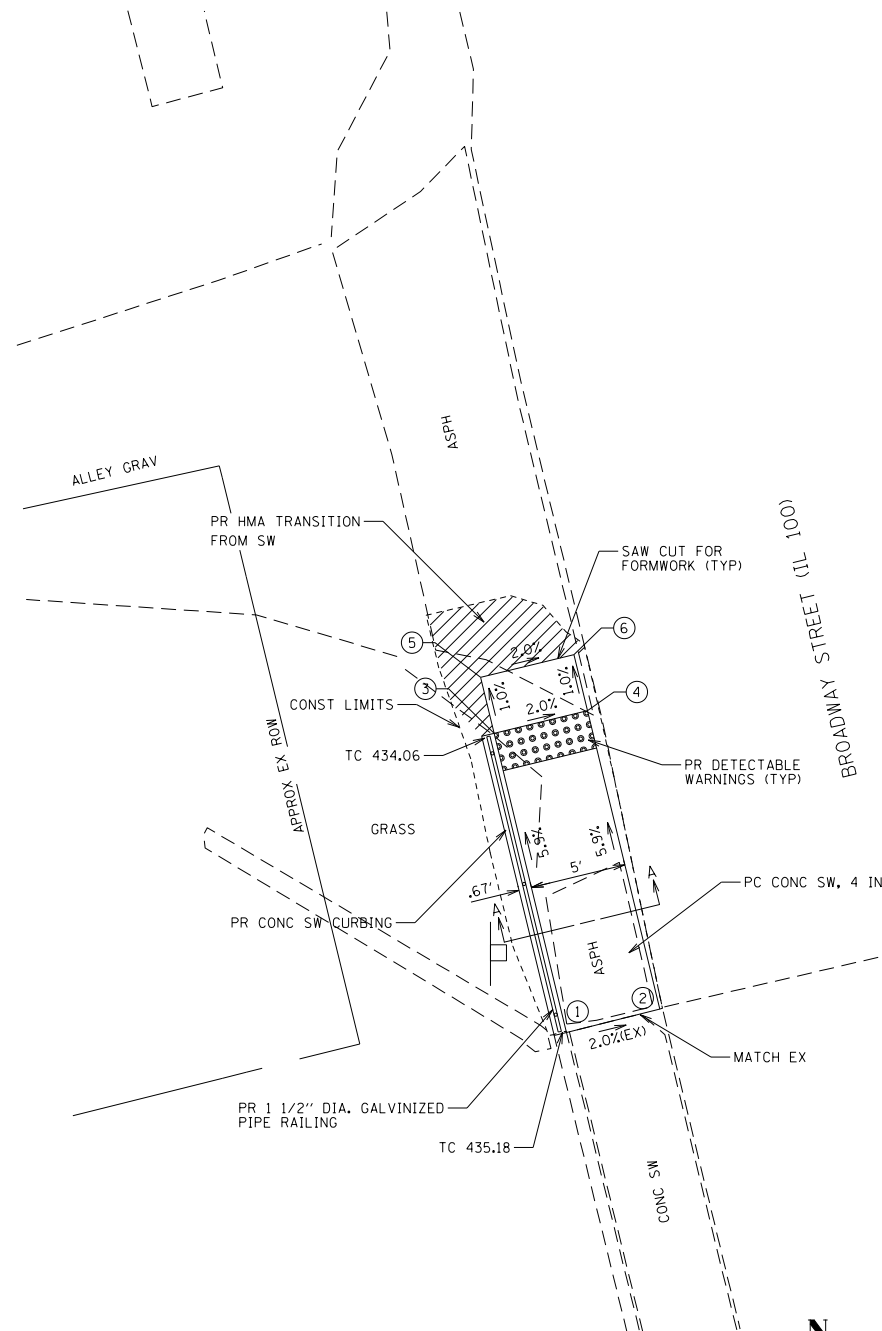
STATE OF ILLINOIS
DEPARTMENT OF TRANSPORTATION

CONTROL TIES ADA SIDEWALK (KAMPSVILLE)
FAP ROUTE 558 (IL RTE 100)

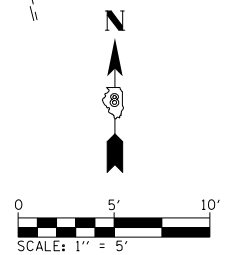
SCALE: SHEET 4 OF 9 SHEETS STA. TO STA.

F.A.P. RTE.	SECTION	COUNTY	TOTAL SHEETS	SHEET NO.
558	124,4,5RS-3	CALHOUN	27	15
CONTRACT NO. 76K36			ILLINOIS FED. AID PROJECT	

POINT #	NORTHING	EASTING	ELEV	DESCRIPTION
1	957873.56	171260.87	MATCH EX	SIDEWALK (BRIDGE SN 007-0018)
2	957874.77	171265.72	MATCH EX	SIDEWALK (BRIDGE SN 007-0018)
3	957889.15	171257.09	433.90	SIDEWALK
4	957890.32	171261.95	433.80	SIDEWALK
5	957892.06	171256.39	433.87	SIDEWALK
6	957893.24	171261.25	433.77	SIDEWALK

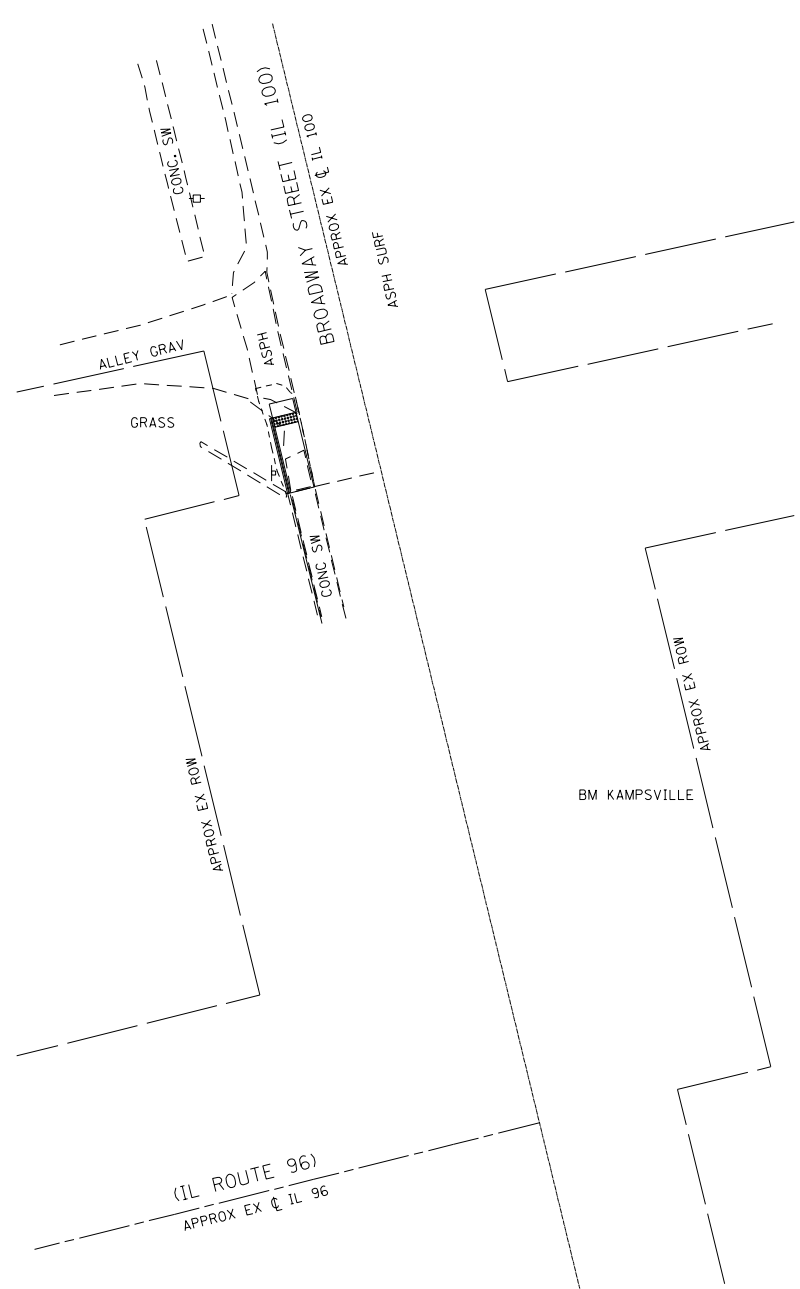


NOTE:
 CONTRACTOR SHALL PLACE AND COMPACT INCIDENTAL HMA SURFACE COURSE FOR TRANSITION FROM PROPOSED SIDEWALK CONSTRUCTION TO TIE BACK TO EXISTING GROUND.
 THE PROPOSED SIDEWALK CURBING SHALL BE CAST MONOLITHICALLY WITH THE PC CONCRETE SIDEWALK. THIS WORK SHALL BE INCLUDED IN THE COST OF PORTLAND CEMENT CONCRETE SIDEWALK, 4 INCH.



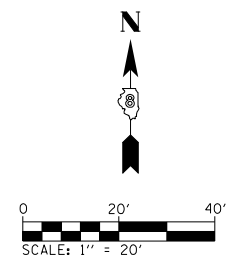
WEST SIDE IL 100

BENTON & ASSOCIATES, INC.

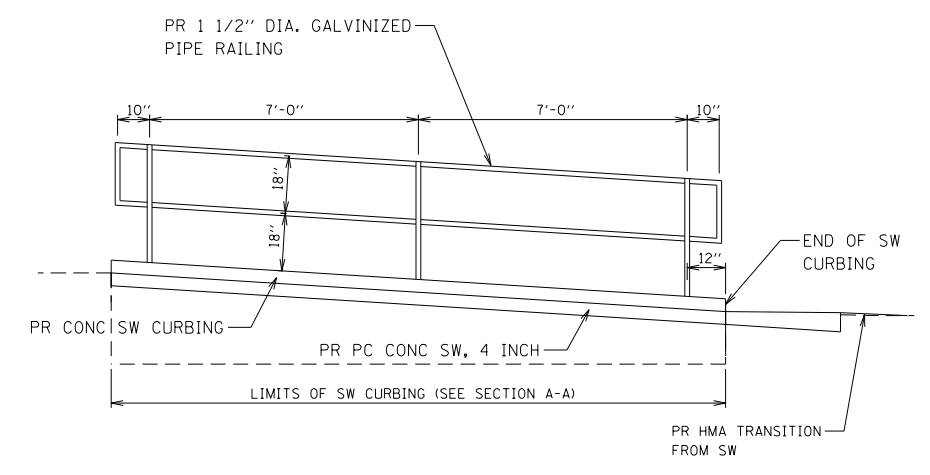


BM KAMPVILLE:
 SECOND ORDER, SURVEY DISK MOUNTED ON A STAINLESS STEEL ROD, DRIVEN 10'+, IN A SLEEVE/CASING WITH LID, LOCATED IN KAMPVILLE, IN THE NE QUAD AT THE "T" INTERSECTION OF IL100 AND IL96. THE STATION IS 29.4 FEET NE OF THE CENTERLINE OF INTERSECTION OF IL100 AND IL96, 29 FEET NORTH OF THE CENTERLINE OF A SERVICE ROAD, 9 FEET SW OF THE SOUTH MOST CORNER OF A WING WALL, AND SOUTH OF A DITCH FLOWING INTO THE ILLINOIS RIVER. ELEV=433.350 (FROM IDOT DIST 8)

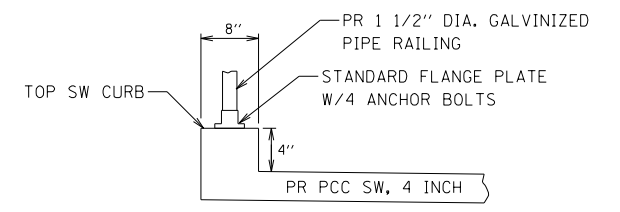
NOTE:
 R.O.W LINES SHOWN ON IL 100 FOR THIS SHEET WERE SET USING SPLIT OF EXISTING SURFACE AND INFORMATION PROVIDED BY IDOT.



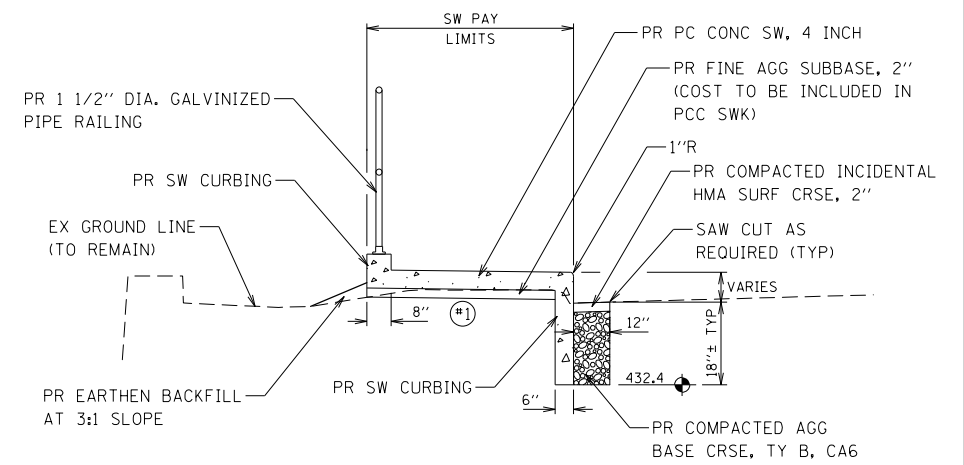
**STATE OF ILLINOIS
 DEPARTMENT OF TRANSPORTATION**



ELEVATION VIEW (LOOKING WEST)
 NOT TO SCALE



HANDRAIL POST DETAIL (ALL POSTS)
 NOT TO SCALE



SECTION A-A
 NOT TO SCALE

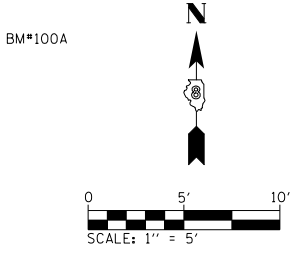
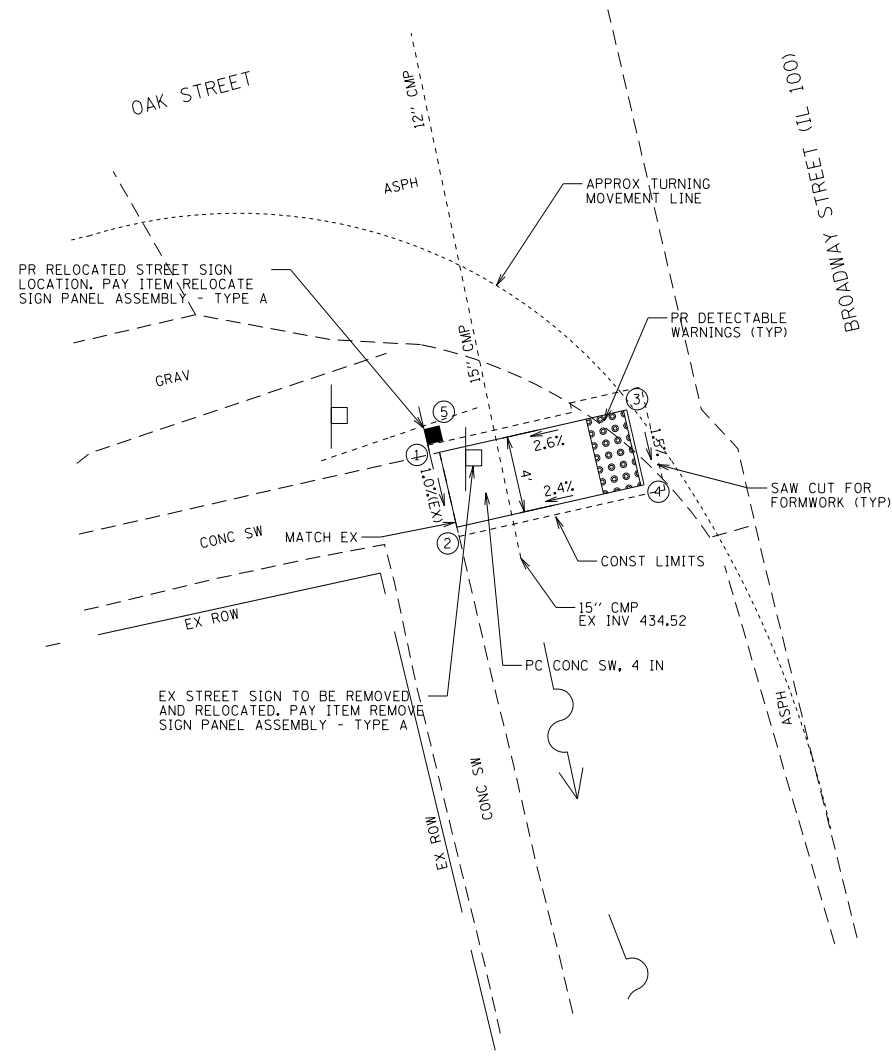
NOTE:
 (1) CONTRACTOR SHALL PLACE AND COMPACT COARSE AGG MATERIAL, CA6 AS NECESSARY FOR SUBGRADE MATERIAL IN AREA OF EXISTING ASPHALT RAMP TO BE REMOVED. COST FOR THIS WORK WILL BE PAID FOR AS AGGREGATE BASE COURSE, TYPE B.

FILE NAME =	USER NAME = murrayda	DESIGNED -	REVISED -
pw:\planroom.dot.illinois.gov\PIWIDOT\Documents\IDOT Offices\District 8\Projects\0876K36\DRAWING\CADsheet\0876K36-sht-Kampville\145508.dwg		CHECKED - WJS	REVISED -
\$MODELNAME\$	PLOT DATE = 10/1/2019	DATE - 06/2018	REVISED -

ADA SIDEWALK PLAN (KAMPVILLE)			
FAP ROUTE 558 (IL RTE 100)			
SCALE:	SHEET 5	OF 9 SHEETS	STA. TO STA.

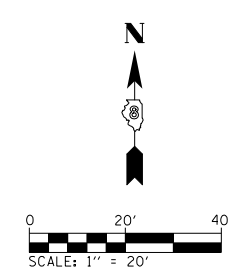
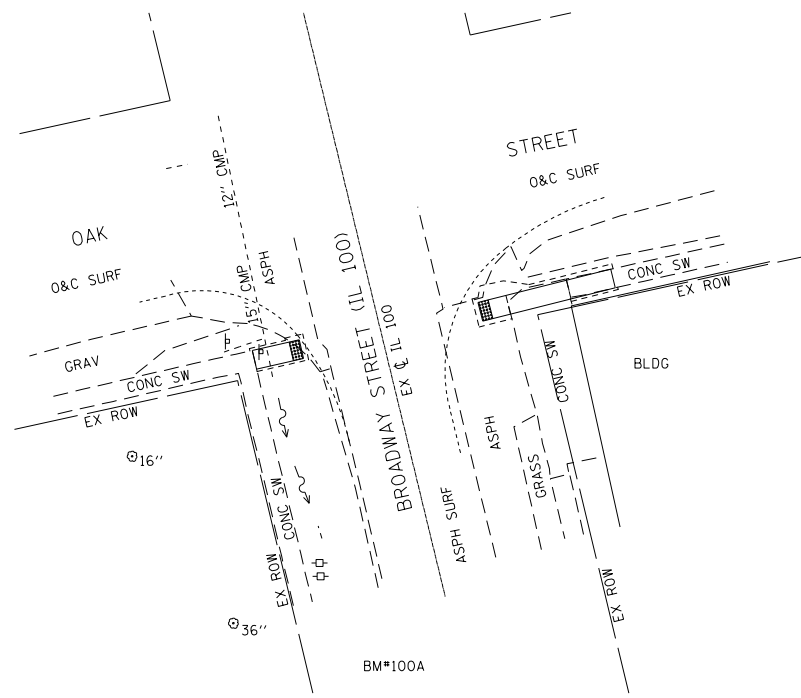
F.A.P. RTE.	SECTION	COUNTY	TOTAL SHEETS	SHEET NO.
558	124,4,5RS-3	CALHOUN	27	16
CONTRACT NO. 76K36				
ILLINOIS FED. AID PROJECT				

POINT#	NORTHING	EASTING	ELEV	DESCRIPTION
1	958503.78	171100.02	MATCH EX	SIDEWALK
2	958499.88	171100.93	MATCH EX	SIDEWALK
3	958505.99	171109.77	436.71	SIDEWALK
4	958502.09	171110.68	436.65	SIDEWALK
5	958504.68	171099.71		RELOCATED SIGN



SOUTHWEST QUADRANT

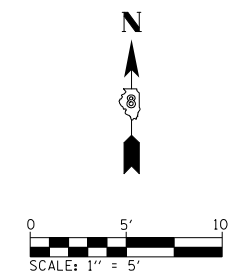
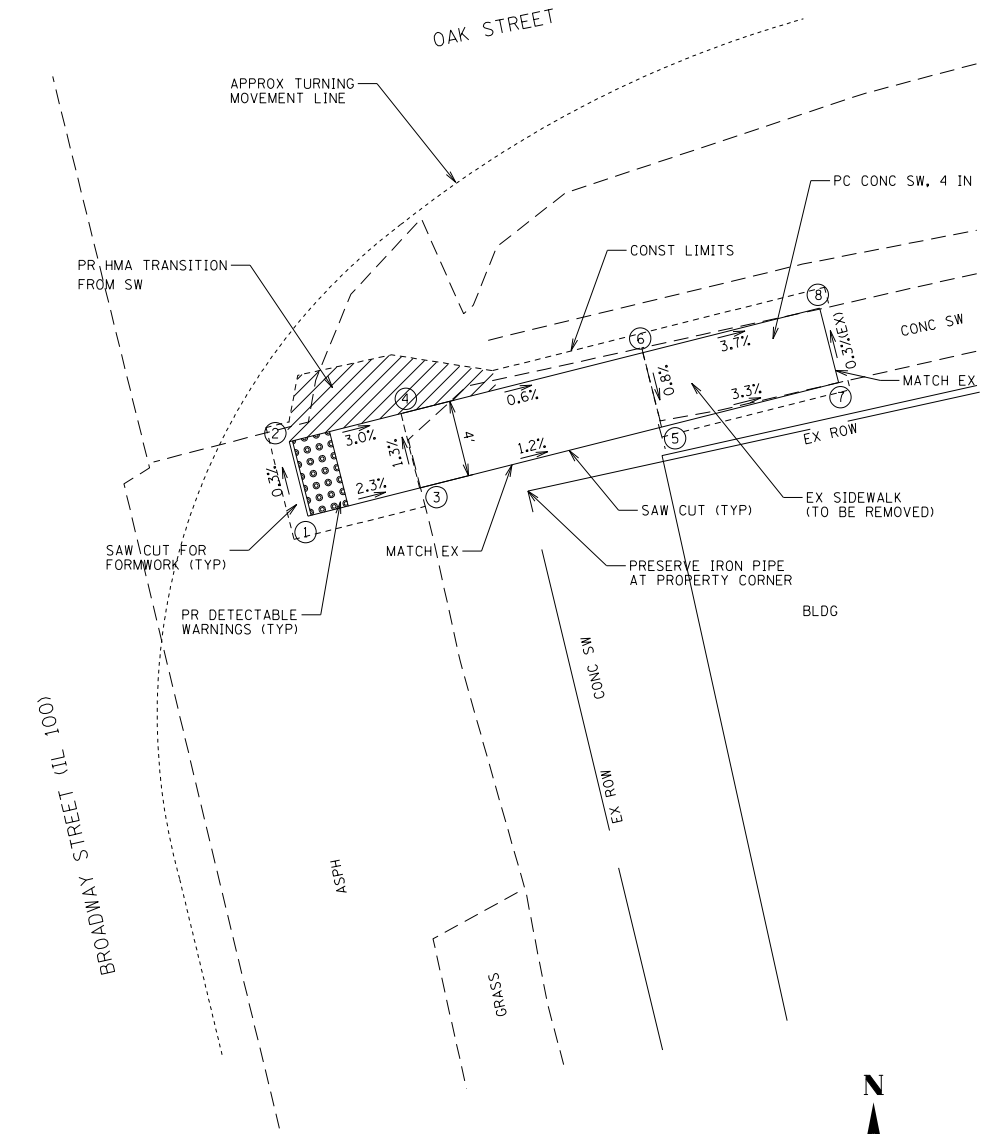
BENTON & ASSOCIATES, INC.



BM#100A:
SET CHISELED SQUARE TOP OF NE CORNER
6" CONC HEADWALL N. SIDE ENTRANCE TO
A CHURCH ON W. SIDE IL100 & 75' +/-
S. OF OAK ST. IN KAMPSVILLE, IL.
ELEV=435.60

**STATE OF ILLINOIS
DEPARTMENT OF TRANSPORTATION**

POINT#	NORTHING	EASTING	ELEV	DESCRIPTION
1	958509.89	171148.02	436.36	SIDEWALK
2	958513.76	171147.04	436.35	SIDEWALK
3	958511.35	171153.84	MATCH EX	SIDEWALK
4	958515.23	171152.86	436.17	SIDEWALK
5	958514.52	171166.44	MATCH EX	SIDEWALK
6	958518.40	171165.47	436.09	SIDEWALK
7	958516.84	171175.66	MATCH EX	SIDEWALK
8	958520.72	171174.68	MATCH EX	SIDEWALK



NOTE:

CONTRACTOR SHALL PLACE AND COMPACT INCIDENTAL HMA SURFACE COURSE FOR TRANSITION FROM PROPOSED SIDEWALK CONSTRUCTION TO TIE BACK TO EXISTING GROUND.

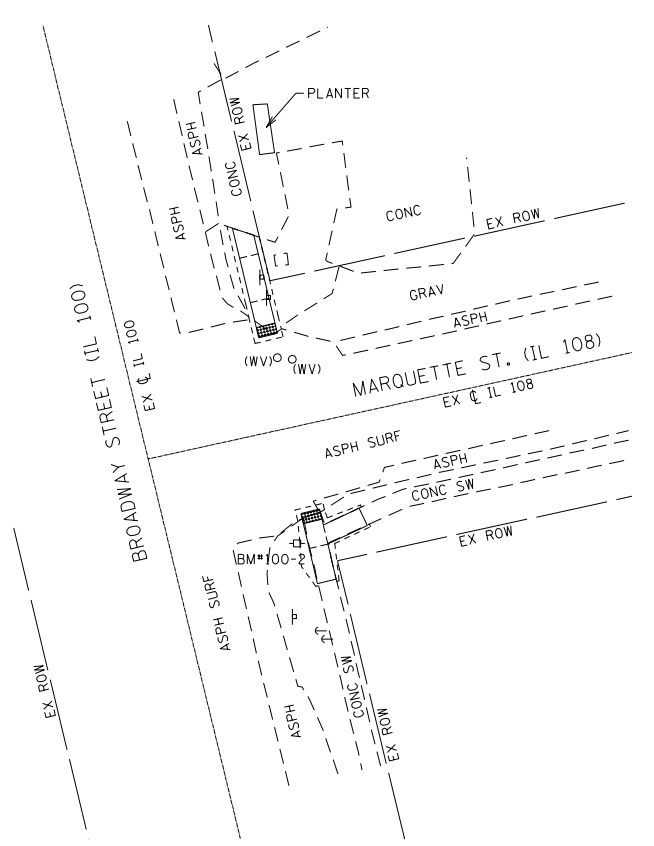
SOUTHEAST QUADRANT

**ADA SIDEWALK PLAN (KAMPSVILLE)
FAP ROUTE 558 (IL RTE 100)**

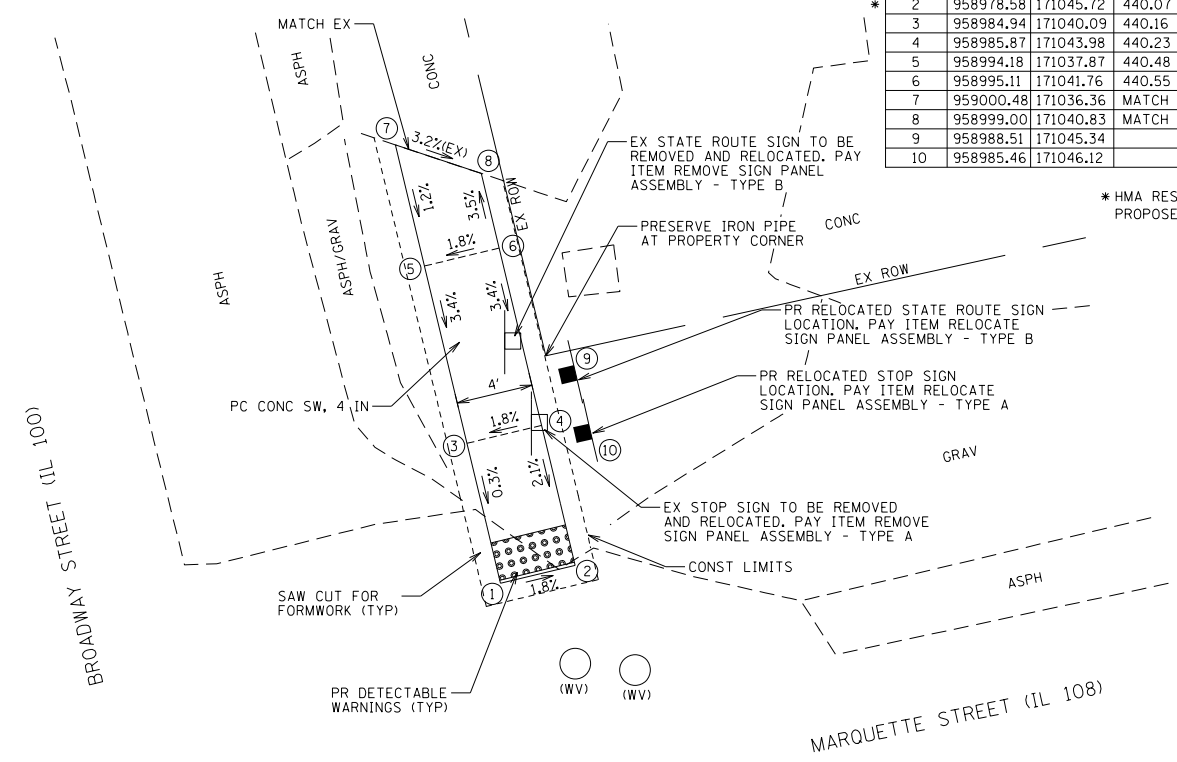
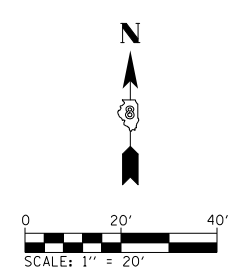
FILE NAME =	USER NAME = murrayda	DESIGNED -	REVISED - 5/16/2019
p:\planroom\dot.illinois.gov\PIDOT\Documents\IDOT Offices\District 8\Projects\0876K36\DRAWING\CAD\sheet\0876K36-sh1-kampsville\1451458b		CHECKED - WJS	REVISED -
\$MODELNAME\$	PLOT DATE = 10/1/2019	DATE - 06/2018	REVISED -

SCALE: SHEET 6 OF 9 SHEETS STA. TO STA.

F.A.P. RTE.	SECTION	COUNTY	TOTAL SHEETS	SHEET NO.
558	124,4,5RS-3	CALHOUN	27	17
CONTRACT NO. 76K36				
ILLINOIS FED. AID PROJECT				

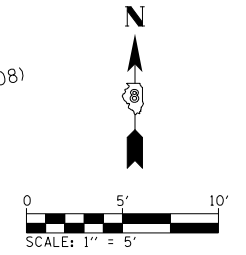


BM*100-2:
FOUND RR SPIKE IN PP W/LIGHT @ SE COR
OF IL100 & IL108. PAINTED AS BM100-2 IN
KAMPSVILLE. ELEV=440.89

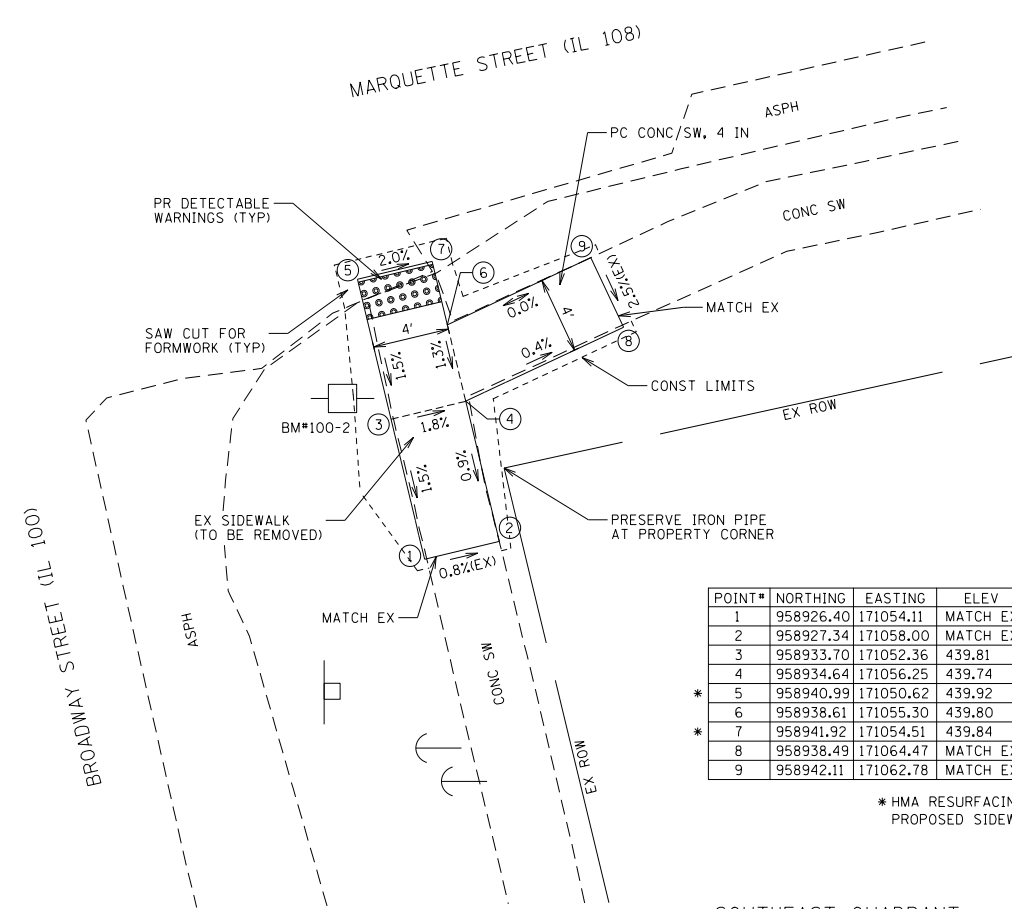


POINT #	NORTHING	EASTING	ELEV	DESCRIPTION
1	958977.64	171041.83	440.14	SIDEWALK
2	958978.58	171045.72	440.07	SIDEWALK
3	958984.94	171040.09	440.16	SIDEWALK
4	958985.87	171043.98	440.23	SIDEWALK
5	958994.18	171037.87	440.48	SIDEWALK
6	958995.11	171041.76	440.55	SIDEWALK
7	959000.48	171036.36		MATCH EX ENTRANCE
8	958999.00	171040.83		MATCH EX ENTRANCE
9	958988.51	171045.34		RELOCATED SIGN
10	958985.46	171046.12		RELOCATED SIGN

* HMA RESURFACING TO MATCH PROPOSED SIDEWALK GRADES

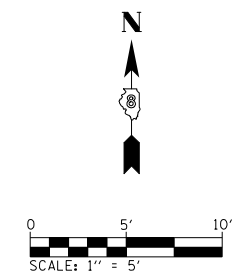


NORTHEAST QUADRANT



POINT #	NORTHING	EASTING	ELEV	DESCRIPTION
1	958926.40	171054.11		MATCH EX SIDEWALK
2	958927.34	171058.00		MATCH EX SIDEWALK
3	958933.70	171052.36	439.81	SIDEWALK
4	958934.64	171056.25	439.74	SIDEWALK
5	958940.99	171050.62	439.92	SIDEWALK
6	958938.61	171055.30	439.80	SIDEWALK
7	958941.92	171054.51	439.84	SIDEWALK
8	958938.49	171064.47		MATCH EX SIDEWALK
9	958942.11	171062.78		MATCH EX SIDEWALK

* HMA RESURFACING TO MATCH PROPOSED SIDEWALK GRADES



SOUTHEAST QUADRANT

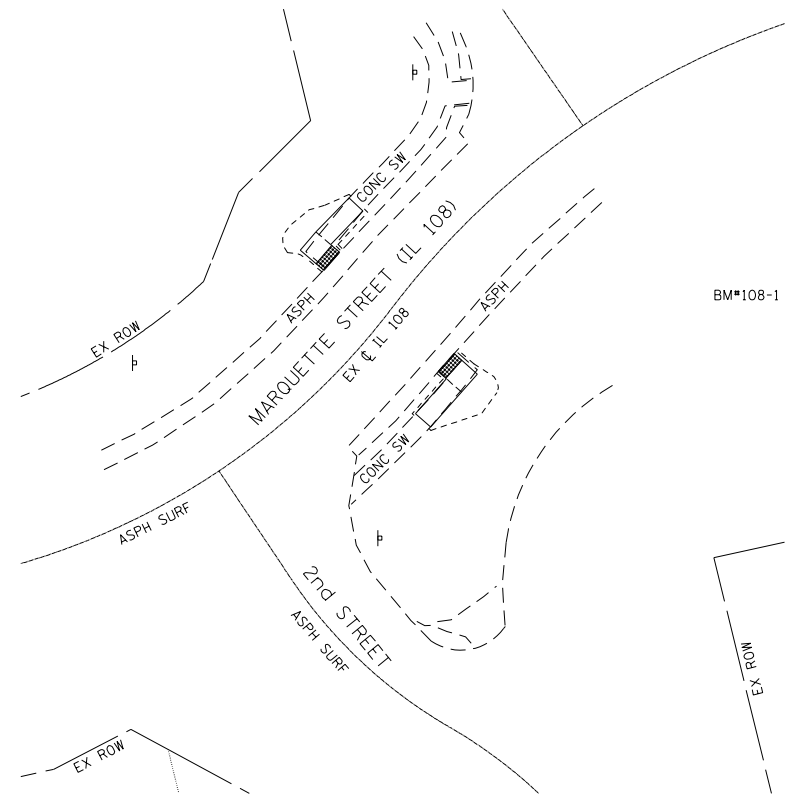
BENTON & ASSOCIATES, INC.

**STATE OF ILLINOIS
DEPARTMENT OF TRANSPORTATION**

**ADA SIDEWALK PLAN (KAMPSVILLE)
FAP ROUTE 558 (IL RTE 100)**

FILE NAME =	USER NAME = murrayda	DESIGNED -	REVISED - 5/15/2019
p:\planroom\dot.illinois.gov\PIWIDOT\Documents\IDOT Offices\District 8\Projects\0876K36\DRAWING\CADsheet\0876K36-sht-Kampsville-11-14-18.dwg		CHECKED - WJS	REVISED -
\$MODELNAME\$	PLOT DATE = 10/1/2019	DATE - 06/2018	REVISED -

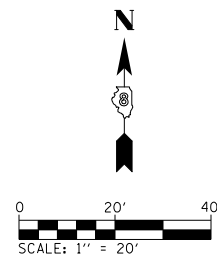
SCALE:	SHEET 7 OF 9 SHEETS	STA.	TO STA.	F.A.P. RTE. 558	SECTION 124,4,SR5-3	COUNTY CALHOUN	TOTAL SHEETS 27	SHEET NO. 18
							CONTRACT NO. 76K36	
ILLINOIS FED. AID PROJECT								



BM#108-1:
 FOUND CHISELED "+" TOP NORTHERLY FLANGE
 BOLT @ END OF "MUELLER" ON S. SIDE IL 108
 @ N. SIDE "KAMPSVILLE INN RESTAURANT" W.
 OF FERRY LAUNCH ELEV=435.71

BENTON & ASSOCIATES, INC.

FILE NAME =	USER NAME = murrayda	DESIGNED -	REVISED -
p:\planroom.dot.illinois.gov\PIDOT\Documents\IDOT Offices\District 8\Projects\0876K36\DRAWING\CADsheet\0876K36-sht-Kampsvi	DATE = 10/1/2019	CHECKED - WJS	REVISED -
\$MODELNAME\$	PLOT DATE = 10/1/2019	DATE - 06/2018	REVISED -

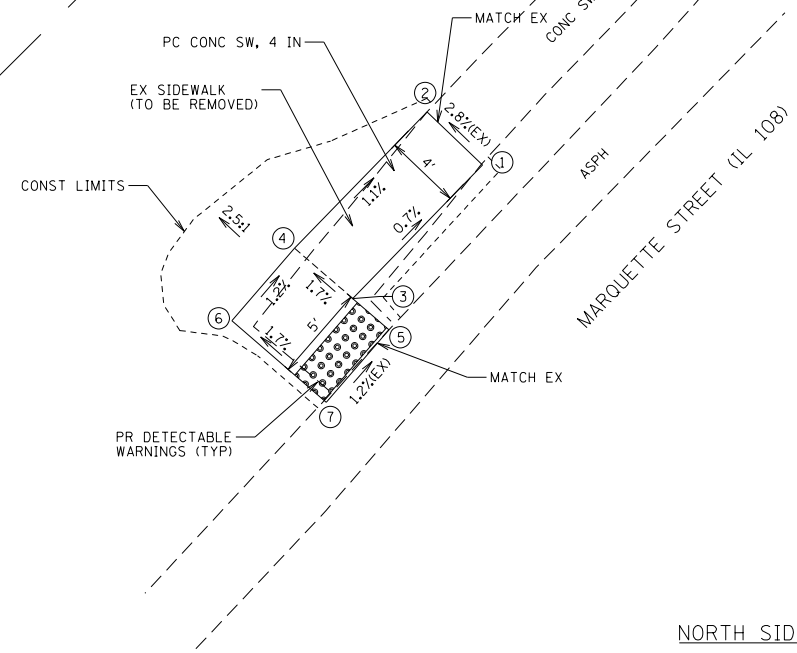


**STATE OF ILLINOIS
 DEPARTMENT OF TRANSPORTATION**

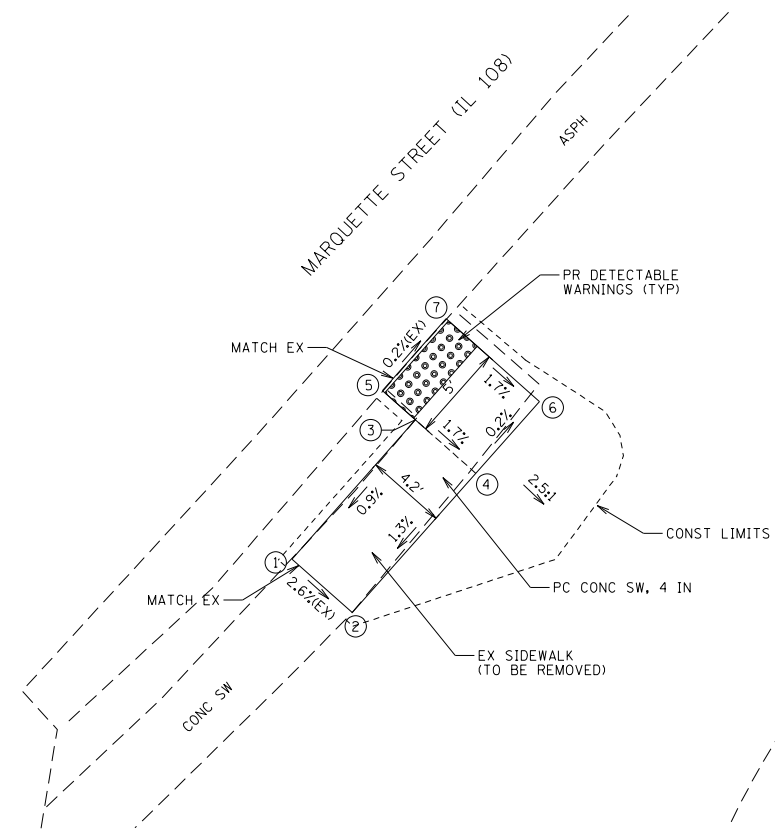
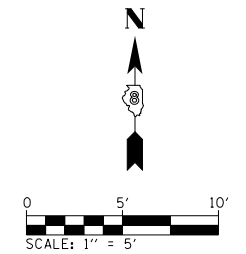
**ADA SIDEWALK PLAN (KAMPSVILLE)
 FAP ROUTE 558 (IL RTE 100)**

SCALE: SHEET 8 OF 9 SHEETS STA. TO STA.

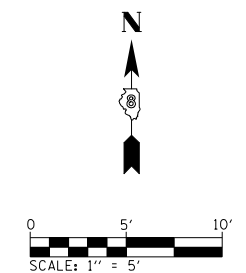
POINT#	NORTHING	EASTING	ELEV	DESCRIPTION
1	959070.14	171290.04	MATCH EX	SIDEWALK
2	959072.90	171287.15	MATCH EX	SIDEWALK
3	959063.18	171283.28	439.88	SIDEWALK
4	959065.80	171280.25	439.81	SIDEWALK
5	959061.55	171285.16	MATCH EX	SIDEWALK
6	959062.02	171276.98	439.87	SIDEWALK
7	959057.77	171281.89	MATCH EX	SIDEWALK



NORTH SIDE

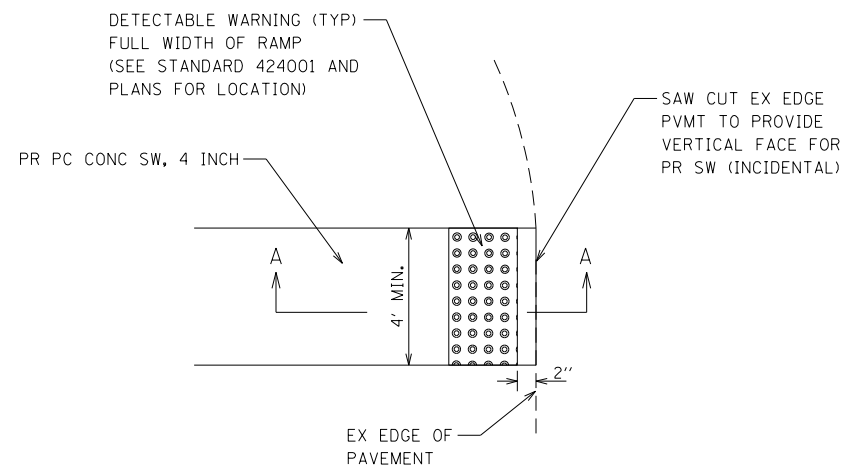


SOUTH SIDE

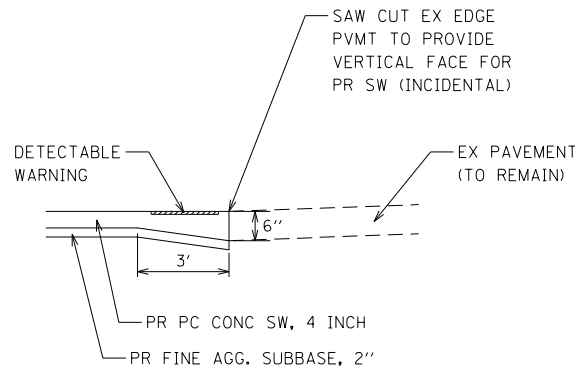


POINT#	NORTHING	EASTING	ELEV	DESCRIPTION
1	959027.94	171300.99	MATCH EX	SIDEWALK
2	959025.16	171304.13	MATCH EX	SIDEWALK
3	959035.20	171307.42	439.95	SIDEWALK
4	959032.42	171310.56	439.88	SIDEWALK
5	959036.73	171305.70	MATCH EX	SIDEWALK
6	959036.16	171313.88	439.87	SIDEWALK
7	959040.47	171309.02	MATCH EX	SIDEWALK

F.A.P. RTE.	SECTION	COUNTY	TOTAL SHEETS	SHEET NO.
558	124,4,5RS-3	CALHOUN	27	19
				CONTRACT NO. 76K36
ILLINOIS FED. AID PROJECT				



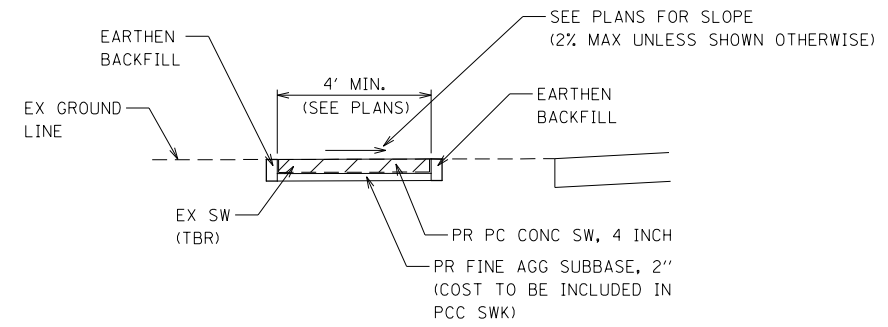
PLAN



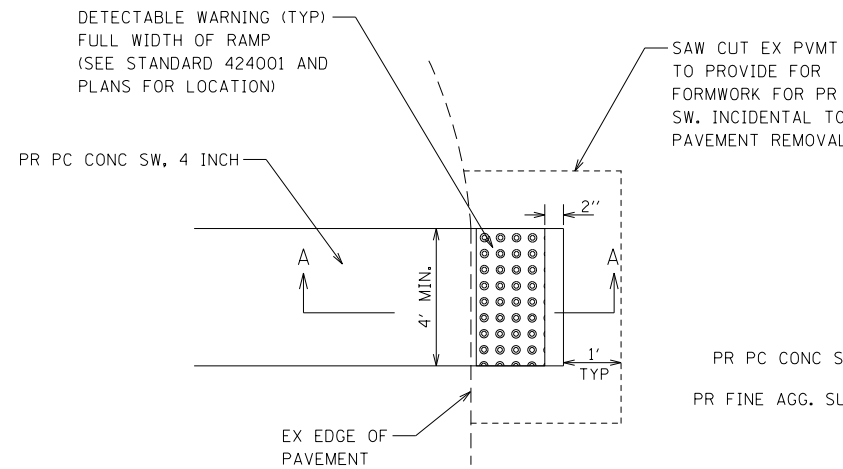
SECTION A-A

NOTE: COST OF ADDED THICKNESS FOR SW AT EDGE OF EX PAVEMENT SHALL BE INCLUDED IN THE COST OF PORTLAND CEMENT CONCRETE SIDEWALK, 4 INCH

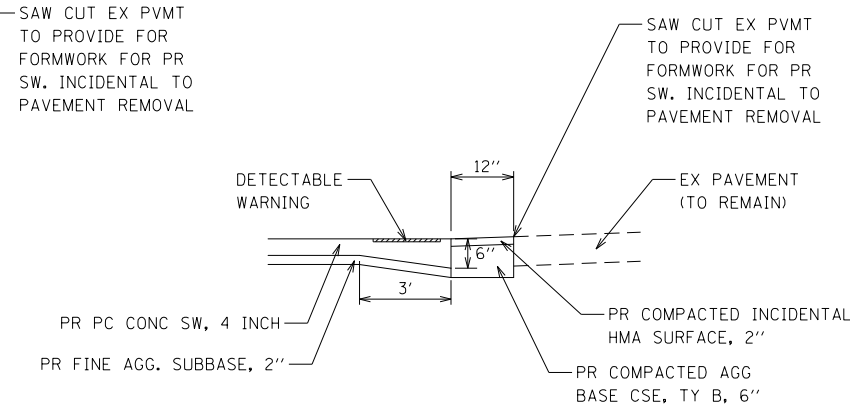
DETAIL SIDEWALK END ABUTTING EXISTING ROADWAY
NOT TO SCALE



DETAIL SIDEWALK IN LANDSCAPE AREAS
NOT TO SCALE



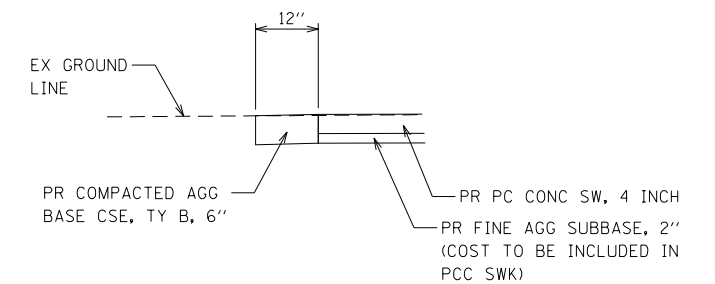
PLAN



SECTION A-A

NOTE: COST OF ADDED THICKNESS FOR SW CONSTRUCTED IN EX PAVEMENT SHALL BE INCLUDED IN THE COST OF PORTLAND CEMENT CONCRETE SIDEWALK, 4 INCH

DETAIL SIDEWALK END CONSTRUCTED IN EXISTING ROADWAY
NOT TO SCALE



DETAIL NE CORNER BROADWAY STREET (IL 100)
AND MARQUETTE STREET (IL 108)
NOT TO SCALE

BENTON & ASSOCIATES, INC.

FILE NAME =	USER NAME = murrayda	DESIGNED -	REVISED -
p:\planroom\dot.illinois.gov\PIWIDOT\Documents\IDOT Offices\District 8\Projects\0876K36\BENTON to CAD sheets\0876K36-sht-plan.dgn		3/24/2018	REVISED -
\$MODELNAME\$	PLOT SCALE = 40.0000' / in.	CHECKED - WJS	REVISED -
	PLOT DATE = 10/1/2019	DATE - 6/2018	REVISED -

STATE OF ILLINOIS
DEPARTMENT OF TRANSPORTATION

CONSTRUCTION DETAILS ADA SIDEWALK (KAMPSVILLE)
FAP ROUTE 558 (IL RTE 100)

SCALE: SHEET 9 OF 9 SHEETS STA. TO STA.

F.A.P. RTE.	SECTION	COUNTY	TOTAL SHEETS	SHEET NO.
558	124,4,5RS-3	CALHOUN	27	20
			CONTRACT NO. 76K36	
ILLINOIS FED. AID PROJECT				

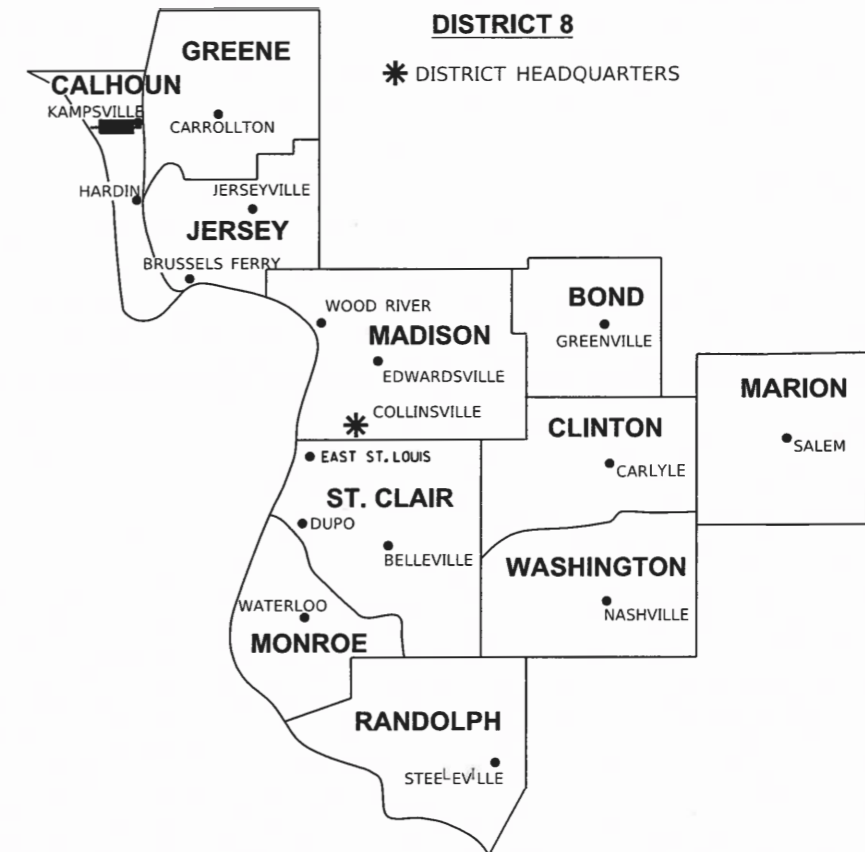
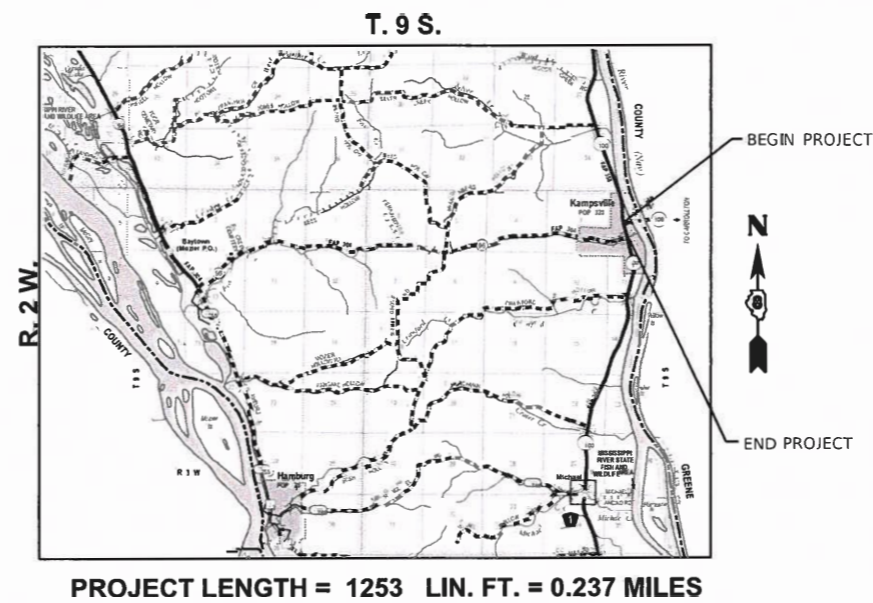
STATE OF ILLINOIS
DEPARTMENT OF TRANSPORTATION
OFFICE OF HIGHWAYS PROJECT IMPLEMENTATION

SPACE RESERVED FOR RECORDING OFFICER

SHEET INDEX		
SHEET NO.	STATION to STATION	DESCRIPTION
1	N/A	COVER
2	N/A	LEGEND AND NOTES
3	N/A	PLAT OF HIGHWAY
4	N/A	PLAT OF HIGHWAY
5	N/A	PLAT OF HIGHWAY

PLAT OF HIGHWAYS

FAP ROUTE 558 (IL 100)
SECTION 124,4,5RS-3
CALHOUN COUNTY
JOB NO. R-98-031-17



LOCATION OF SECTION INDICATED THUS:

PREPARED BY:



GREGORY S. McVICAR, PLS NO. 3512
LICENSE EXPIRATION DATE: 11/30/2020

SHEET 1 OF 5

ILLINOIS DEPARTMENT OF TRANSPORTATION OFFICE OF HIGHWAYS PROJECT IMPLEMENTATION/REGION 5/DISTRICT 8 1102 EASTPORT PLAZA DRIVE COLLINSVILLE, ILLINOIS 62234-6198				
F.A.P. RTE.	SECTION	COUNTY	TOTAL SHEETS	SHEET NO.
558	124,4,5RS-3	CALHOUN	27	21
CONTRACT NO. 76K36				
FED. ROAD DIST. NO. _____		ILLINOIS	FED. AID PROJECT	

LEGEND FOR EXISTING TOPOGRAPHIC SYMBOLS

TRAFFIC SIGNAL GULFBOX	○	DRAINAGE FLOW LINE	FL
TRAFFIC SIGNAL HANDHOLE	○	RIP RAP	—
TRAFFIC SIGNAL SIGNAL POST	○	HEADWALL	—
TRAFFIC SIGNAL STEEL MAST ARM	—	CULVERT END SECTION	—
TRAFFIC SIGNAL PEDESTRIAN PUSH BUTTON	●	DRAINAGE MANHOLE	○
TRAFFIC SIGNAL WOODEN POLE	○	INLET	○
TRAFFIC SIGNAL VEHICLE DETECTION PRIORITY	◁	ROADWAY DITCH FLOW	—
TRAFFIC SIGNAL VEHICLE DETECTION MAGNET	—	VEGETATION LINE	—
TRAFFIC SIGNAL JUNCTION BOX	⊠	STUMP	■
TRAFFIC SIGNAL CONTROLLER	⊠	SHRUB	○
TRAFFIC SIGNAL HEAVY DUTY HANDHOLE	⊠	EVERGREEN TREE	■
RAILROAD CANTILEVER MAST ARM	—	DECIDUOUS TREE	○
RAILROAD CROSSBUCK	—	WOODS/BUSH LINE	—
RAILROAD TRACK	—	TRAFFIC SIGN	—
RAILROAD TRACK (ABANDONED)	—	GUARDRAIL POST	—
RAILROAD CROSSGATE	—	GUARDRAIL	—
RAILROAD CONTROL BOX	⊠	FIELD LINE	—
RAILROAD FLASHING SIGNAL	⊠	LEVEE/NOISE BARRIER	—
UTILITY TELEPHONE SPLICE BOX	⊠	FENCE	—
UTILITY POWER POLE	⊠	MAIL BOX	—
UTILITY TRAFFIC SIGNAL	⊠	ADVERTISING SIGN	—
UTILITY LIGHT POLE	⊠	MARSH	—
UTILITY FIRE HYDRANT	⊠	LIGHTING HANDHOLE	—
UTILITY MANHOLE	○	LIGHTING POWER POLE	—
UTILITY TELEPHONE POLE	⊠	LIGHTING JUNCTION BOX	—
UTILITY GUY ANCHOR	—	LIGHTING HEAVYDUTY HANDHOLE	—
UTILITY PIPELINE WARNING SIGN	—	LIGHTING CONTROLLER	—
UTILITY HANDHOLE	—	LIGHTING PULL POINT	—
UTILITY SPLICE BOX	—	HIGHWAY LIGHTING ELECTRICAL GROUND	—
UTILITY JUNCTION BOX	—	HIGHWAY LIGHTING SINGLE UNIT	—
UTILITY HEAVY DUTY HANDHOLE	—	HIGHWAY LIGHTING DOUBLE UNIT	—
UTILITY DOUBLE HANDHOLE	—	EXISTING CONCRETE BARRIER	—
UTILITY CONTROLLER	—	EXISTING CREEK OR DITCH	—
UTILITY WATER METER	○	EXISTING EDGE OF PAVEMENT	—

RIGHT-OF-WAY LEGEND

	SECTION CORNERS		QUARTER SECTION CORNERS
---	EXISTING CENTERLINE	---	EXISTING RIGHT-OF-WAY LINE
---	FORMER RIGHT-OF-WAY LINE	---	EXISTING IDOT EASEMENT LINE
---	EXISTING EASEMENT LINE	---	BUILDING SETBACK LINE
---	EXISTING ACCESS CONTROL LINE	---	EXISTING RIGHT-OF-WAY & PROPOSED ACCESS CONTROL LINE
---	PROPOSED ACCESS CONTROL LINE	---	PROPOSED CENTERLINE
---	PROPOSED RIGHT-OF-WAY LINE	---	PROPOSED TEMPORARY EASEMENT LINE
---	PROPOSED PERMANENT EASEMENT LINE	---	SECTION LINE
---	QUARTER SECTION LINE	---	QUARTER QUARTER SECTION LINE
---	PROPERTY LINE (TITLE)	---	RECORDED PLAT/DEED LINE
---	APL	---	APPARENT PROPERTY LINE
---	SAME OWNERSHIP	---	MEASURED DIMENSION
---	RECORDED DIMENSION	---	FOUND STONE
---	FOUND IRON PIPE OR IRON ROD AT CORNER UNLESS OTHERWISE NOTED	---	SET 1 INCH IRON PIPE WITH PLASTIC CAP IDENTIFIED BY SURVEYORS LICENSE NUMBER AT CORNER UNLESS OTHERWISE NOTED
---	PERMANENT SURVEY MONUMENT, I.D.O.T. STD. 667101 (TO BE SET BY OTHERS)	---	SET 5/8 INCH IRON ROD AS SURVEY CONTROL UNLESS OTHERWISE NOTED
---	FOUND CUT CROSS	---	SET CUT CROSS

- STAKING OF PROPOSED RIGHT-OF-WAY AND PERMANENT EASEMENT CORNERS. SET 5/8 INCH METAL ROD WITH DIVISION OF HIGHWAY SURVEY ALUMINUM CAP TO MONUMENT THE POSITION SHOWN. IDENTIFIED BY INSCRIPTION DATA AND SURVEYORS LICENSE NUMBER.
- STAKING OF PROPOSED RIGHT-OF-WAY AND PERMANENT EASEMENT CORNERS IN CULTIVATED AREA. A MINIMUM OF 20 INCHES BELOW THE GROUND SURFACE. SET 5/8 INCH METAL ROD WITH DIVISION OF HIGHWAY SURVEY ALUMINUM CAP TO MONUMENT THE POSITION SHOWN. IDENTIFIED BY INSCRIPTION DATA AND SURVEYORS LICENSE NUMBER.

LEGEND FOR ABBREVIATIONS

A/C	ACCESS CONTROL
AC	ACRE
AVE	AVENUE
BK	BOOK
BLVD	BOULEVARD
CL	CENTERLINE
CAB	CABINET
CH	COUNTY HIGHWAY
Ch	CHAIN
CP	CONTROL POINT
CPS	COTTON PICKER SPINDLE
DB	DEED BOOK
E	EAST
EX	EXISTING
FA	FEDERAL AID
FAI	FEDERAL AID INTERSTATE
FAP	FEDERAL AID PRIMARY
FAS	FEDERAL AID SECONDARY
FAU	FEDERAL AID URBAN
FND	FOUND
ha	HECTARE
IP	IRON PIPE
IR	IRON ROD
LT	LEFT
m ²	METER
m	SQUARE METERS
N	NORTH
N/F	NOW OR FORMERLY
N & BC	NAIL AND BOTTLE CAP
N & C	NAIL AND CAP
N & W	NAIL AND WASHER
NE	NORTHEAST
NW	NORTHWEST
PB	PLAT BOOK
PG	PAGE
POB	POINT OF BEGINNING
POC	POINT OF COMMENCEMENT
POT	POINT ON TANGENT
PL	PROPERTY LINE
PR	PROPOSED
R	RANGE
RD	ROAD
REC	RECORD
ROW	RIGHT-OF-WAY
RR	RAILROAD
RRS	RAILROAD SPIKE
RT	RIGHT
RTE	ROUTE
S	SOUTH
SBI	STATE BOND ISSUE
SE	SOUTHEAST
SEC	SECTION
SQ FT	SQUARE FEET
SR	STATE ROUTE
ST	STREET
STA	STATION
SMK	SURVEY MARKER
SW	SOUTHWEST
T	TOWNSHIP
TR	TOWNSHIP ROAD
USGS	U.S. GEOLOGICAL SURVEY
W	WEST

SPACE RESERVED FOR RECORDING OFFICER

PROPOSED PARCEL NUMBER LEGEND

8001001	PROPOSED FEE SIMPLE ACQUISITION
8001001PE	PROPOSED PERMANENT EASEMENT
8001001TE	PROPOSED TEMPORARY EASEMENT
8001001DED	PROPOSED DEDICATION
8001001AC	PROPOSED ACCESS CONTROL LINE

CURVE ABBREVIATIONS

PC	POINT OF CURVATURE
PI	POINT OF INTERSECTION
PT	POINT OF TANGENCY
PRC	POINT OF REVERSE CURVE
PCC	POINT OF COMPOUND CURVE
R	RADIUS OF CURVE
L	LENGTH OF CURVE
CB	CHORD BEARING
C	CHORD LENGTH
D	DEGREE OF CURVE
E	EXTERNAL ORDINATE
Δ	CENTRAL ANGLE

BASIS OF COORDINATE & BEARING STATEMENT

THE COORDINATES AND BEARINGS FOR THIS SURVEY ARE BASED ON THE PROJECT SURVEY CONTROL DATA THAT THE ILLINOIS DEPARTMENT OF TRANSPORTATION (DEPARTMENT) ESTABLISHED AND PROVIDED TO THE SURVEYOR, WHICH IS A "GROUND SURFACE COORDINATE SYSTEM" PREPARED SPECIFICALLY FOR THIS PROJECT.

THE CONTROL POINTS UTILIZED ON THIS PROJECT AND THEIR ASSOCIATED COORDINATES, AS PROVIDED BY THE DEPARTMENT, ARE LISTED IN THE TABLE BELOW.

THIS "GROUND SURFACE COORDINATE SYSTEM" WAS DERIVED FROM THE DEPARTMENT'S INITIAL CONTROL SURVEY WHICH ESTABLISHED STATE PLANE COORDINATE SYSTEM (SPCS) VALUES FOR EACH OF THE CONTROL POINTS BASED ON THE ILLINOIS STATE PLANE COORDINATE SYSTEM, WEST ZONE, NAD83 (2011) Epoch 2010.0. TO CREATE THE PROJECT "GROUND SURFACE COORDINATE SYSTEM", THE DEPARTMENT MADE THE FOLLOWING TWO ADJUSTMENTS TO THE SPCS VALUES:

- ADJUSTED THE STATE PLANE COORDINATES TO A GROUND COORDINATE SYSTEM BY DIVIDING THE SPCS VALUES BY THE COMBINATION FACTOR UTILIZED FOR THIS PROJECT WHICH IS 0.9999431148.
- SUBTRACTED 2,000,000 FROM THE ADJUSTED EASTING VALUES TO DISTINGUISH A UNIQUE DIFFERENCE BETWEEN THE GROUND SYSTEM COORDINATES FROM THE SPCS COORDINATES.

**PROJECT SURVEY CONTROL DATA
GROUND SURFACE COORDINATE SYSTEM**

COORDINATES PROVIDED BY THE ILLINOIS DEPARTMENT OF TRANSPORTATION
JOB NO. D-98-016-16/ CONTRACT NO. 76J17

POINT NO.	NORTH (FEET)	EAST (FEET)	DESCRIPTION
10	957,822.0764	171,346.3417	REBAR W/ ALUMINUM CAP
11	957,929.1188	171,248.2485	REBAR W/ ALUMINUM CAP
12	958,501.1998	171,108.4372	REBAR W/ ALUMINUM CAP
13	958,916.8964	171,006.7244	REBAR W/ ALUMINUM CAP

TOTAL HOLDING AREA SOURCE TABLE

1	AREA ACCORDING TO THE SURVEY PERFORMED BY THE CONSULTANT.
2	AREA LISTED IN RECORDED DEED.
3	AREA ACCORDING TO A RECORDED SUBDIVISION PLAT.
4	AREA ACCORDING TO A PLAT OF SURVEY.
5	AREA CALCULATED FROM RECORDED DEEDS OR TITLE COMMITMENTS - NOT SURVEYED.
6	AREA ACCORDING TO COUNTY TAX MAPS AND COUNTY ASSESSMENT RECORDS.
7	AREA ACCORDING TO OTHER RECORDS, SEE NOTE ON THE PLAT OF HIGHWAYS.

TOPOGRAPHIC STATEMENT

THE TOPOGRAPHY SHOWN HEREON WAS PROVIDED TO THE SURVEYOR BY THE ILLINOIS DEPARTMENT OF TRANSPORTATION. THE SURVEYOR VISUALLY FIELD VERIFIED THE EXISTENCE OF THE TOPOGRAPHY SHOWN HEREON. IN ADDITION THE SURVEYOR PHYSICALLY LOCATED IN THE FIELD THE FOLLOWING ITEMS ON 10/09/2017:

- BUILDINGS

GREGORY S. McVICAR, PLS NO. 3512
LICENSE EXPIRATION DATE: 11/30/2020



SHERRILL ASSOCIATES, INC.
Engineers - Surveyors - Planners
Professional Design Firm Number 184-001238
316 North Main Street, Edwardsville, IL 62025
Tel: 618-656-9251, Fax: 618-656-9496

ILLINOIS DEPARTMENT OF TRANSPORTATION
PLAT OF HIGHWAYS
FAP ROUTE 558 (IL 100)
SECTION 124,4,5RS-3
CALHOUN COUNTY
JOB NO. R-98-031-17

SHEET 2 OF 5

ILLINOIS DEPARTMENT OF TRANSPORTATION OFFICE OF HIGHWAYS PROJECT IMPLEMENTATION/REGION 5/DISTRICT 8 1102 EASTPORT PLAZA DRIVE COLLINSVILLE, ILLINOIS 62234-6198				
F.A.P. RTE.	SECTION	COUNTY	TOTAL SHEETS	SHEET NO.
558	124,4,5RS-3	CALHOUN	27	22
FED. ROAD DIST. NO.			CONTRACT NO. 76K36	
ILLINOIS			FED. AID PROJECT	

SEE LEGENDS, TOPOGRAPHIC STATEMENT, SURVEYORS NOTE(S) AND BASIS OF COORDINATES & BEARINGS STATEMENT ON SHEET 2



SPACE RESERVED FOR RECORDING OFFICER

COORDINATE TABLE		
POINT NO.	NORTH	EAST
511	957,960.8871	171,226.2654
512	957,974.5851	171,288.7966



STATE OF ILLINOIS)
) SS
 COUNTY OF MADISON)

I, GREGORY S. McVICAR, AN ILLINOIS PROFESSIONAL LAND SURVEYOR, STATE THAT I HAVE SURVEYED THE PLAT OF HIGHWAY SHOWN HEREON AND THAT THIS PROFESSIONAL SERVICE CONFORMS TO THE CURRENT ILLINOIS MINIMUM STANDARDS FOR A BOUNDARY SURVEY FOR THE PROPOSED PARCEL TO BE ACQUIRED BY THE STATE OF ILLINOIS, DEPARTMENT OF TRANSPORTATION, SHOWN HEREON.

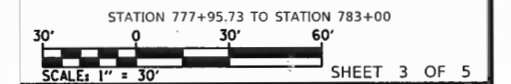
DATED _____

GREGORY S. McVICAR, PLS NO. 3512
 LICENSE EXPIRATION DATE: 11/30/2020



SA **SHERRILL ASSOCIATES, INC.**
 Engineers - Surveyors - Planners
 Professional Design Firm Number 184-001238
 316 North Main Street Tel. 618-656-9251
 Edwardsville, IL 62025 Fax 618-656-9496

ILLINOIS DEPARTMENT OF TRANSPORTATION
PLAT OF HIGHWAYS
 FAP ROUTE 558 (IL 100)
 SECTION 124,4,5RS-3
 CALHOUN COUNTY
 JOB NO. R-98-031-17
 STATION 777+95.73 TO STATION 783+00



ILLINOIS DEPARTMENT OF TRANSPORTATION
 OFFICE OF HIGHWAYS PROJECT IMPLEMENTATION/REGION 5/DISTRICT 8
 1102 EASTPORT PLAZA DRIVE
 COLLINSVILLE, ILLINOIS 62234-6198

F.A.P. RTE.	SECTION	COUNTY	TOTAL SHEETS	SHEET NO.
558	124,4,5RS-3	CALHOUN	27	23

COMPLETION DATE OF FIELD WORK PERFORMED		CONTRACT NO. 76K36	
10/09/2019	ROW STAKING	FED. ROAD DIST. NO. _____	ILLINOIS FED. AID PROJECT

SEE LEGENDS, TOPOGRAPHIC STATEMENT, SURVEYORS NOTE(S) AND BASIS OF COORDINATES & BEARINGS STATEMENT ON SHEET 2



SPACE RESERVED FOR RECORDING OFFICER

COORDINATE TABLE		
POINT NO.	NORTH	EAST
513	958,252.5158	171,155.9795
514	958,511.1852	171,159.4697
515	958,569.5277	171,145.4084
516	958,555.8297	171,082.8773



SEE SHEET 5

SEE SHEET 4

STATE OF ILLINOIS)
 COUNTY OF MADISON) SS

I, GREGORY S. McVICAR, AN ILLINOIS PROFESSIONAL LAND SURVEYOR, STATE THAT I HAVE SURVEYED THE PLAT OF HIGHWAY SHOWN HEREON AND THAT THIS PROFESSIONAL SERVICE CONFORMS TO THE CURRENT ILLINOIS MINIMUM STANDARDS FOR A BOUNDARY SURVEY FOR THE PROPOSED PARCEL TO BE ACQUIRED BY THE STATE OF ILLINOIS, DEPARTMENT OF TRANSPORTATION, SHOWN HEREON.

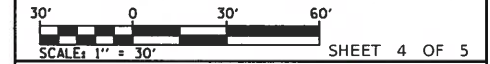
DATED _____

GREGORY S. McVICAR, PLS NO. 3512
 LICENSE EXPIRATION DATE: 11/30/2020



SA **SHERRILL ASSOCIATES, INC.**
 Engineers - Surveyors - Planners
 Professional Design Firm Number 184-001238
 316 North Main Street Tel. 618-656-9251
 Edwardsville, IL 62025 Fax 618-656-9496

ILLINOIS DEPARTMENT OF TRANSPORTATION
PLAT OF HIGHWAYS
 FAP ROUTE 558 (IL 100)
 SECTION 124.4,5RS-3
 CALHOUN COUNTY
 JOB NO. R-98-031-17
 STATION 777+95.73 TO STATION 783+00



ILLINOIS DEPARTMENT OF TRANSPORTATION
 OFFICE OF HIGHWAYS PROJECT IMPLEMENTATION/REGION 5/DISTRICT 8
 1102 EASTPORT PLAZA DRIVE
 COLLINSVILLE, ILLINOIS 62234-6198

F.A.P. RTE.	SECTION	COUNTY	TOTAL SHEETS	SHEET NO.
558	124.4,5RS-3	CALHOUN	27	24

COMPLETION DATE OF FIELD WORK PERFORMED		CONTRACT NO. 76K36	
10/09/2019	ROW STAKING:	FED. ROAD DIST. NO.	ILLINOIS FED. AID PROJECT

PART OF THE SW 1/4 OF SECTION 2, T. 9 S., R. 2 W., OF THE 4TH P.M., CALHOUN COUNTY, ILLINOIS

SEE LEGENDS, TOPOGRAPHIC STATEMENT, SURVEYORS NOTE(S) AND BASIS OF COORDINATES & BEARINGS STATEMENT ON SHEET 2



SPACE RESERVED FOR RECORDING OFFICER

EXISTING RIGHT OF WAY CENTERLINE COORDINATE TABLE				
POINT NO.	STATION	OFFSET	NORTH	EAST
200	49+99.47	CL-CL	958,952.3822	171,018.8050
201	52+49.10	PC	959,005.9810	171,262.6131
202	54+20.69	PRC	959,146.1994	171,369.2811
203	55+11.45	PT	959,111.5707	171,485.3030

COORDINATE TABLE		
POINT NO.	NORTH	EAST
517	958,931.1506	171,058.2531
518	958,989.4931	171,044.1919
519	959,024.6425	170,969.8879
520	959,009.3395	171,134.7907
521	958,947.1066	171,131.0922
522	959,021.4634	171,159.7691
523	959,020.6421	171,172.3227
524	959,020.0362	171,177.5102
525	959,025.4040	171,201.9272
526	959,027.4767	171,206.2620
527	959,055.5347	171,256.8659
528	959,059.1961	171,258.3012
529	959,074.0459	171,264.1222
530	959,088.9748	171,279.1184
601	958,942.4411	171,179.1069
602	958,947.1197	171,131.0953
603	958,946.1331	171,190.5482
604	958,953.8217	171,225.6019
605	958,962.1662	171,241.7077
606	958,934.0813	171,293.4321
607	958,881.9679	171,329.7021
608	958,810.2383	171,347.2614

LINE TABLE		
LINE	BEARING	LENGTH
L1	S12°23'55"E	4.28' (4.28')
L2	S89°24'15"E	47.09' (47.10')
L3	N77°35'39"E	35.86' (35.86')
L4	N62°39'05"E	18.15' (18.15')
L5	S61°30'53"E	58.86' (58.86')
L7	S34°50'54"E	63.51' (63.51')
L8	S13°43'46"E	78.83'
L10	N64°06'20"E	27.77' (27.77')
L11	S83°20'14"E	5.22' (5.20')
L12	N77°36'05"E	25.00' (25.00')
L13	S64°26'44"W	4.80' (4.80')
L14	S21°24'17"W	3.93' (3.92')
L15	S21°24'17"W	15.95' (15.95')
L16	S45°07'48"W	21.16' (21.16')
L17	N13°44'35"W	32.07'
L18	N76°23'03"E	3.00' (3.00')
L19	N13°44'31"W	33.00' (33.00')
L20	S76°27'41"W	3.00' (3.00')



NOTE: POINT NUMBERS 601 THROUGH 608 SET FOR LAND OWNER ON 07/17/2017.

STATE OF ILLINOIS))
COUNTY OF MADISON))

I, GREGORY S. McVICAR, AN ILLINOIS PROFESSIONAL LAND SURVEYOR, STATE THAT I HAVE SURVEYED THE PLAT OF HIGHWAY SHOWN HEREON AND THAT THIS PROFESSIONAL SERVICE CONFORMS TO THE CURRENT ILLINOIS MINIMUM STANDARDS FOR A BOUNDARY SURVEY FOR THE PROPOSED PARCEL TO BE ACQUIRED BY THE STATE OF ILLINOIS, DEPARTMENT OF TRANSPORTATION, SHOWN HEREON.

DATED _____

GREGORY S. McVICAR, PLS NO. 3512
LICENSE EXPIRATION DATE: 11/30/2020



SHERRILL ASSOCIATES, INC.
Engineers - Surveyors - Planners
Professional Design Firm Number 184-001238
316 North Main Street, Edwardsville, IL 62025
Tel: 618-656-9251, Fax: 618-656-9496

ILLINOIS DEPARTMENT OF TRANSPORTATION
PLAT OF HIGHWAYS
FAP ROUTE 558 (IL 100)
SECTION 124,4,5RS-3
CALHOUN COUNTY
JOB NO. R-98-031-17
STATION 777+95.73 TO STATION 783+00

SCALE: 1" = 30'

SHEET 5 OF 5

ILLINOIS DEPARTMENT OF TRANSPORTATION
OFFICE OF HIGHWAYS PROJECT IMPLEMENTATION/REGION 5/DISTRICT 8
1102 EASTPORT PLAZA DRIVE
COLLINSVILLE, ILLINOIS 62234-6198

F.A.P. RTE.	SECTION	COUNTY	TOTAL SHEETS	SHEET NO.
558	124,4,5RS-3	CALHOUN	27	25

CONTRACT NO. 76K36
FED. ROAD DIST. NO. ILLINOIS FED. AID PROJECT

