

STATE OF ILLINOIS
DEPARTMENT OF TRANSPORTATION

F.A.P. RTE.	SECTION	COUNTY	TOTAL SHEETS	SHEET NO.
2	103SW-1	MADISON	22	1
		ILLINOIS	CONTRACT NO. 76L91	

D-98-103-18



LOCATION OF SECTION INDICATED THIS: - [Symbol] -

FOR INDEX OF SHEETS, SEE SHEET NO. 2

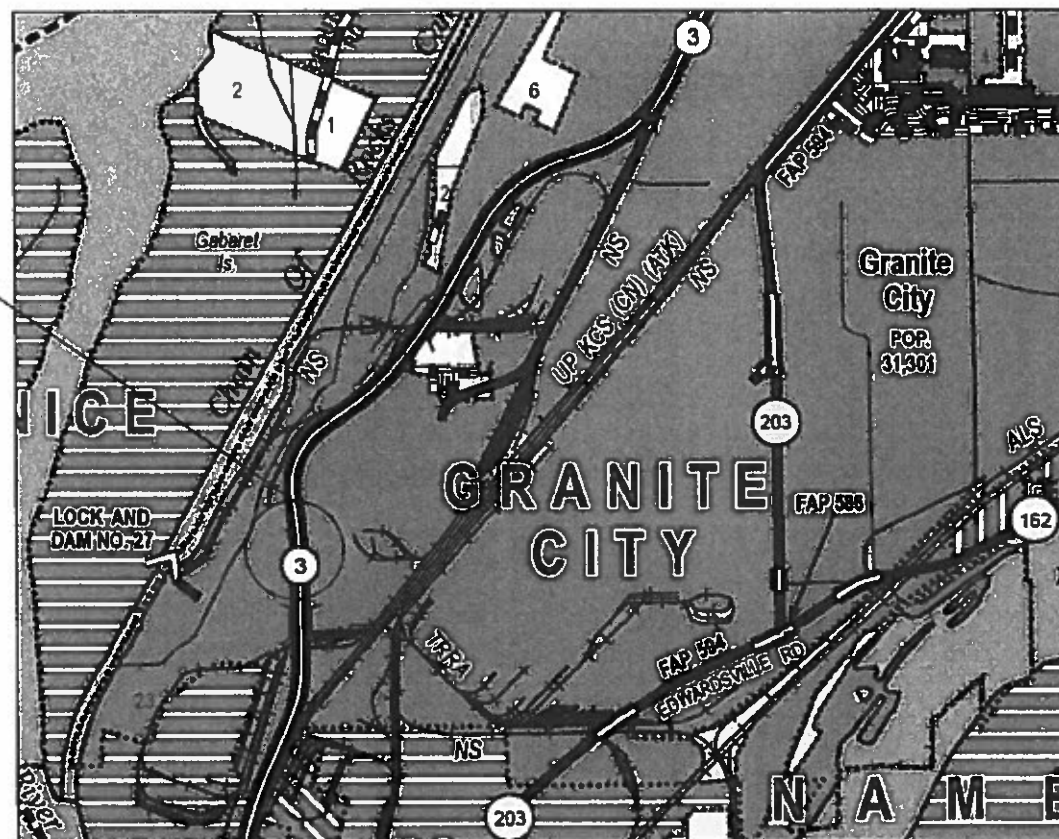
FUNCTIONAL CLASSIFICATION
OTHER ARTERIAL
2018 ADT = 14300 (ESTIMATED)
SU=6.1% MU=12.2%

PROPOSED HIGHWAY PLANS

FAP ROUTE 2 (IL 3)
SECTION 103SW-1
PROJECT NHPP-AOCS(973)
ADA IMPROVEMENTS & TRAFFIC SIGNAL
REPLACEMENT
MADISON COUNTY

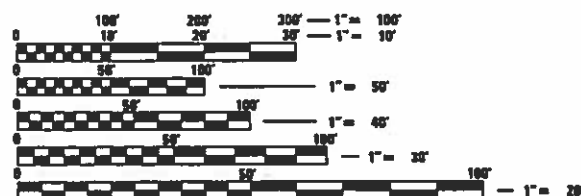
C-98-314-18

PROJECT LOCATION:
NIEDRINGHAUS AVE.
LATITUDE: 38.70150
LONGITUDE: -90.16774



R 10 W NOT TO SCALE

GROSS LENGTH = 175.00 FT. = 0.03 MILE
NET LENGTH = 175.00 FT. = 0.03 MILE



FULL SIZE PLANS HAVE BEEN PREPARED USING STANDARD ENGINEERING SCALES. REDUCED SIZED PLANS WILL NOT CONFORM TO STANDARD SCALES. IN MAKING MEASUREMENTS ON REDUCED PLANS, THE ABOVE SCALES MAY BE USED.

J.U.L.I.E.
JOINT UTILITY LOCATION INFORMATION FOR EXCAVATION
1-800-892-0123
OR 811

PROJECT ENGINEER: HERVE GELIN (618) 346-3179
DESIGNER: MARY SMITH (618) 346-3495

CONTRACT NO. 76L91

STATE OF ILLINOIS
DEPARTMENT OF TRANSPORTATION

SUBMITTED Oct 18, 2019
Karl Roberts REGIONAL ENGINEER
Dec 6, 2019 A. E. S. ENGINEER OF DESIGN AND ENVIRONMENT
Dec 6, 2019 Paul P. [Signature] DIRECTOR OF HIGHWAYS PROJECT IMPLEMENTATION

PRINTED BY THE AUTHORITY
OF THE STATE OF ILLINOIS

CODE NO.	ITEM	UNIT	TOTAL QUANTITY	CONSTR. CODE
				80% FED 20% STATE ROADWAY 0021 URBAN
4200060	WELDED WIRE REINFORCEMENT	SQ YD	10	10
42400100	PORTLAND CEMENT CONCRETE SIDEWALK 4 INCH	SQ FT	852	852
42400800	DETECTABLE WARNINGS	SQ FT	140	140
44000100	PAVEMENT REMOVAL	SQ YD	110	110
44000500	COMBINATION CURB AND GUTTER REMOVAL	FOOT	120	120
44000600	SIDEWALK REMOVAL	SQ FT	330	330
44003100	MEDIAN REMOVAL	SQ FT	930	930
44200990	CLASS B PATCHES, TYPE 1,12 INCH	SQ YD	2	2
44200994	CLASS B PATCHES, TYPE 11,12 INCH	SQ YD	21	21
44201299	DOWEL BARS 1 1/2"	EACH	36	36
44213200	SAW CUTS	FOOT	197	197
60255500	MANHOLES TO BE ADJUSTED	EACH	1	1
60260100	INLETS TO BE ADJUSTED	EACH	1	1
60603500	COMBINATION CONCRETE CURB AND GUTTER, TYPE B-6.06	FOOT	96	96

CODE NO.	ITEM	UNIT	TOTAL QUANTITY	CONSTR. CODE
				80% FED 20% STATE ROADWAY 0021 URBAN
60605000	COMBINATION CONCRETE CURB AND GUTTER, TYPE B-6.24	FOOT	305	305
60605900	COMBINATION CONCRETE CURB AND GUTTER, TYPE B-9.12	FOOT	45	45
60618300	CONCRETE MEDIAN SURFACE, 4 INCH	SQ FT	585	585
66900105	UNDERGROUND STORAGE TANK REMOVAL	EACH	1	1
*66900200	NON-SPECIAL WASTE DISPOSAL	CU YD	80	80
*66900530	SOIL DISPOSAL ANALYSIS	EACH	3	3
*66901001	REGULATED SUBSTANCES PRE-CONSTRUCTION PLAN	LSUM	1	1
*66901003	REGULATED SUBSTANCES FINAL CONSTRUCTION REPORT	LSUM	1	1
*66901006	REGULATED SUBSTANCES MONITORING	CAL DA	3	3
67000400	ENGINEER'S FIELD OFFICE, TYPE A	CAL MO	6	6
67100100	MOBILIZATION	L SUM	1	1
70100320	TRAFFIC CONTROL AND PROTECTION, STANDARD 701422	L SUM	1	1
70102630	TRAFFIC CONTROL AND PROTECTION, STANDARD 701601	L SUM	1	1
70102635	TRAFFIC CONTROL AND PROTECTION, STANDARD 701701	L SUM	1	1

* SPECIALTY ITEM

MODEL: Default
FILE: MainE_PlanRoom.dwg
USER: pwh
PROJECT: 10/17/2019
DRAWN: smithma
CHECKED: -
DATE: -

USER NAME = smithma	DESIGNED -	REVISED -
PLOT SCALE = 100.0000' / in.	DRAWN -	REVISED -
PLOT DATE = 10/17/2019	CHECKED -	REVISED -
	DATE -	REVISED -

**STATE OF ILLINOIS
DEPARTMENT OF TRANSPORTATION**

SUMMARY OF QUANTITIES

SCALE: SHEET 1 OF 3 SHEETS STA. TO STA.

F.A.P. RTE.	SECTION	COUNTY	TOTAL SHEETS	SHEET NO.
2	1035W-1	MADISON	22	3
CONTRACT NO. 76L91			ILLINOIS FED. AID PROJECT	

CODE NO.	ITEM	UNIT	TOTAL QUANTITY	CONSTR. CODE	
				80% FED 20% STATE ROADWAY	
				0021	
				URBAN	
70102640	TRAFFIC CONTROL AND PROTECTION, STANDARD 701801	L SUM	1	1	
70103815	TRAFFIC CONTROL SURVEILLANCE	CAL DA	10	10	
70300210	TEMPORARY PAVEMENT MARKING LETTERS AND SYMBOLS	SQ FT	47	47	
70300220	TEMPORARY PAVEMENT MARKING - LINE 4"	FOOT	121	121	
70300250	TEMPORARY PAVEMENT MARKING - LINE 8"	FOOT	615	615	
70300260	TEMPORARY PAVEMENT MARKING - LINE 12"	FOOT	824	824	
70300280	TEMPORARY PAVEMENT MARKING - LINE 24"	FOOT	206	206	
* 72000100	SIGN PANEL - TYPE 1	SQ FT	5	5	
* 78009000	MODIFIED URETHANE PAVEMENT MARKING - LETTERS AND SYMBOLS	SQ FT	47	47	
* 78009004	MODIFIED URETHANE PAVEMENT MARKING - LINE 4"	FOOT	121	121	
* 78009008	MODIFIED URETHANE PAVEMENT MARKING - LINE 8"	FOOT	615	615	
* 78009012	MODIFIED URETHANE PAVEMENT MARKING - LINE 12"	FOOT	824	824	
* 78009024	MODIFIED URETHANE PAVEMENT MARKING - LINE 24"	FOOT	206	206	
* 78200020	CURB REFLECTORS	EACH	61	61	

* SPECIALTY ITEM

CODE NO.	ITEM	UNIT	TOTAL QUANTITY	CONSTR. CODE	
				80% FED 20% STATE ROADWAY	
				0021	
				URBAN	
* 80300100	LOCATING UNDERGROUND CABLE	FOOT	30	30	
* 81028320	UNDERGROUND CONDUIT, PVC, 1" DIA.	FOOT	98	98	
* 81028340	UNDERGROUND CONDUIT, PVC, 1 1/2" DIA.	FOOT	10	10	
* 81028350	UNDERGROUND CONDUIT, PVC, 2" DIA.	FOOT	39	39	
* 81028370	UNDERGROUND CONDUIT, PVC, 3" DIA.	FOOT	15	15	
* 81028400	UNDERGROUND CONDUIT, PVC, 5" DIA.	FOOT	41	41	
* 81400700	HANDHOLE, PORTLAND CEMENT CONCRETE	EACH	4	4	
* 85704804	FULL-ACTUATED CONTROLLER, STANDARD SEQUENCE IV, 8 PHASES, IN TYPE IV CABINET	EACH	1	1	
* 87301215	ELECTRIC CABLE IN CONDUIT, SIGNAL NO. 142C	FOOT	1337	1337	
* 87301225	ELECTRIC CABLE IN CONDUIT, SIGNAL NO. 143C	FOOT	1396	1396	
* 87301245	ELECTRIC CABLE IN CONDUIT, SIGNAL NO. 145C	FOOT	3194	3194	
* 87301255	ELECTRIC CABLE IN CONDUIT, SIGNAL NO. 147C	FOOT	914	914	
* 87301305	ELECTRIC CABLE IN CONDUIT, LEAD-IN, NO. 141 PAIR	FOOT	2656	2656	
* 87301900	ELECTRIC CABLE IN CONDUIT, EQUIPMENT GROUNDING CONDUCTOR, NO. 61C	FOOT	658	658	

MODEL: Default
FILE: \\nrcs-pkgs\pub\harcourt\at\illinois.gov\PWIDOT\Documents\DOT_Offices\Dir\ctc @ Projects\076191\CADD\Drawings\076191-1-11-500.dgn

USER NAME = smithma	DESIGNED -	REVISED -
PLOT SCALE = 100.0000' / in.	DRAWN -	REVISED -
PLOT DATE = 10/17/2019	CHECKED -	REVISED -
	DATE -	REVISED -

STATE OF ILLINOIS
DEPARTMENT OF TRANSPORTATION

SUMMARY OF QUANTITIES

SCALE: SHEET 2 OF 3 SHEETS STA. TO STA.

F.A.P. RTE.	SECTION	COUNTY	TOTAL SHEETS	SHEET NO.
2	1035W-1	MADISON	22	4
CONTRACT NO. 76L91			ILLINOIS FED. AID PROJECT	

MODEL: Default
 FILE NAME: P:\p1planroom.dat
 ILLINOIS GOV PWIDOT Documents\DOT Office\District 8\Projects\076191\CAD\Drawings\076191-sh-500.dgn

CODE NO.	ITEM	UNIT	TOTAL QUANTITY	CONSTR. CODE
				80% FED 20% STATE ROADWAY 0021 URBAN
* 87502680	TRAFFIC SIGNAL POST, ALUMINUM 14 FT.	EACH	4	4
* 87600100	PEDESTRIAN PUSH-BUTTON POST, TYPE I	EACH	2	2
* 87800100	CONCRETE FOUNDATION, TYPE A	FOOT	12	12
* 88040230	SIGNAL HEAD, POLYCARBONATE, LED, 2-FACE, 3-SECTION, BRACKET MOUNTED	EACH	2	2
* 88040250	SIGNAL HEAD, POLYCARBONATE, LED, 2-FACE, 1-3 SECTION, 1-4 SECTION, BRACKET MOUNTED	EACH	2	2
* 88102810	PEDESTRIAN SIGNAL HEAD, POLYCARBONATE, LED, 1-FACE, BRACKET MOUNTED	EACH	6	6
* 88500100	INDUCTIVE LOOP DETECTOR	EACH	16	16
* 88600100	DETECTOR LOOP, TYPE I	FOOT	2871	2871
* 88800100	PEDESTRIAN PUSH-BUTTON	EACH	6	6
* 89000100	TEMPORARY TRAFFIC SIGNAL INSTALLATION	EACH	1	1
* 89502300	REMOVE ELECTRIC CABLE FROM CONDUIT	FOOT	7400	7400
* 89502350	REMOVE AND REINSTALL ELECTRIC CABLE FROM CONDUIT	FOOT	1158	1158
* 89502375	REMOVE EXISTING TRAFFIC SIGNAL EQUIPMENT	EACH	5	5
* 89502376	REBUILD EXISTING HANDHOLE	EACH	1	1

*** SPECIALTY ITEM**

CODE NO.	ITEM	UNIT	TOTAL QUANTITY	CONSTR. CODE
				80% FED 20% STATE ROADWAY 0021 URBAN
89502380	REMOVE EXISTING HANDHOLE	EACH	4	4
89502385	REMOVE EXISTING CONCRETE FOUNDATION	EACH	4	4
X0327980	PAVEMENT MARKING REMOVAL - WATER BLASTING	SQ FT	1734	1734
X6660445	RIGHT OF WAY AND PROPERTY CORNERS	EACH	2	2
X7030005	TEMPORARY PAVEMENT MARKING REMOVAL	SQ FT	1734	1734
* X7800200	PAINT PAVEMENT MARKING CURB	FOOT	329	329
Z0013798	CONSTRUCTION LAYOUT	L SUM	1	1

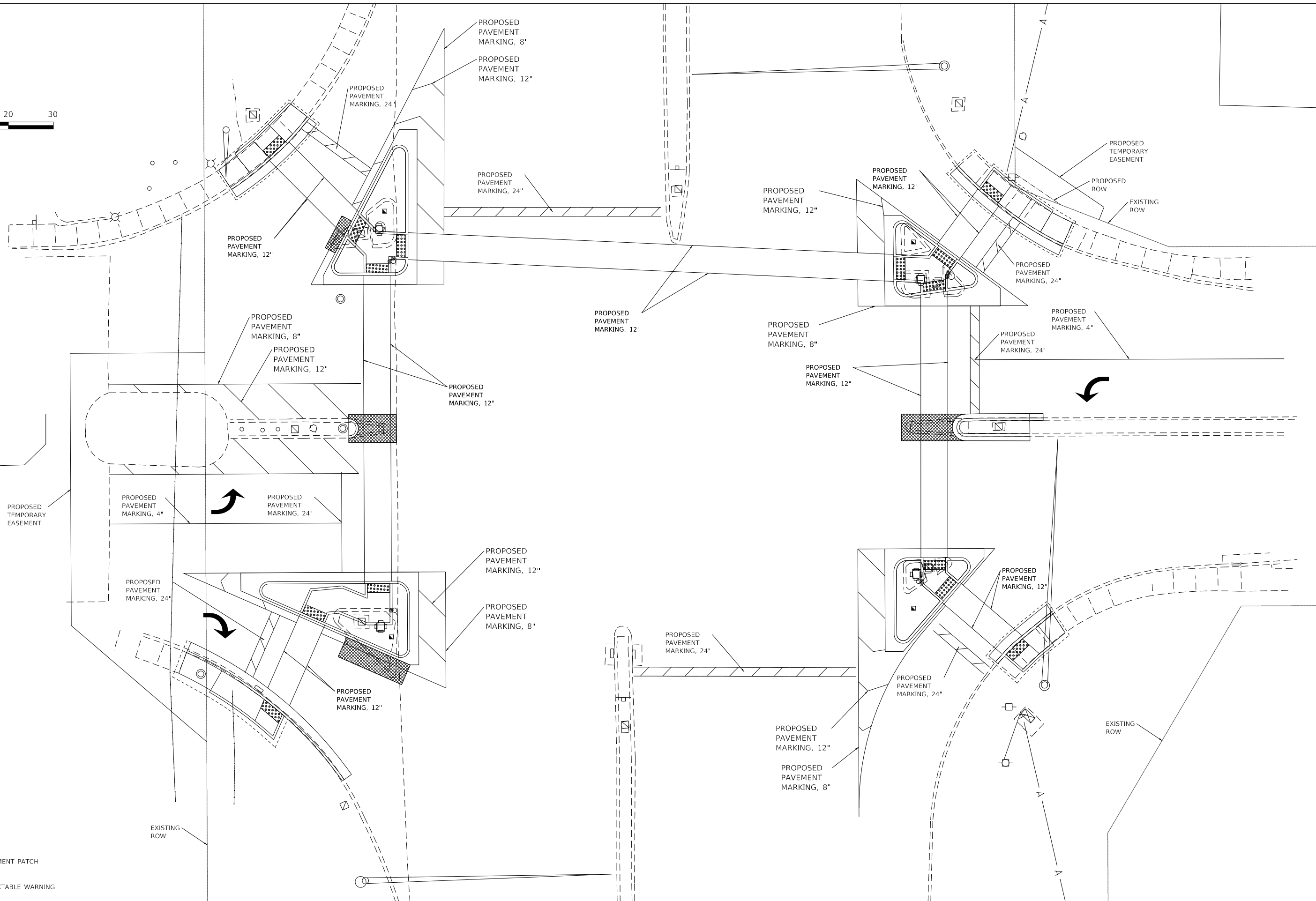
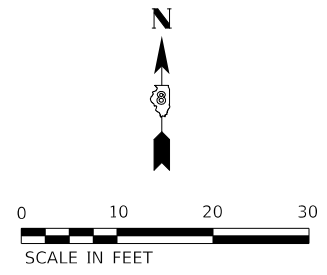
USER NAME = smithma	DESIGNED -	REVISED -
DRAWN -	CHECKED -	REVISED -
PLOT SCALE = 100.0000' / in.	DATE -	REVISED -
PLOT DATE = 10/17/2019		

**STATE OF ILLINOIS
DEPARTMENT OF TRANSPORTATION**

SUMMARY OF QUANTITIES

SCALE: SHEET 3 OF 3 SHEETS STA. TO STA.

F.A.P. RTE.	SECTION	COUNTY	TOTAL SHEETS	SHEET NO.
2	1035W-1	MADISON	22	5
CONTRACT NO. 76L91				
ILLINOIS FED. AID PROJECT				



LEGEND

	PAVEMENT PATCH
	DETECTABLE WARNING

USER NAME = smithma	DESIGNED -	REVISED -
	DRAWN -	REVISED -
PLOT SCALE = 40.0000 ' / in.	CHECKED -	REVISED -
PLOT DATE = 10/17/2019	DATE -	REVISED -

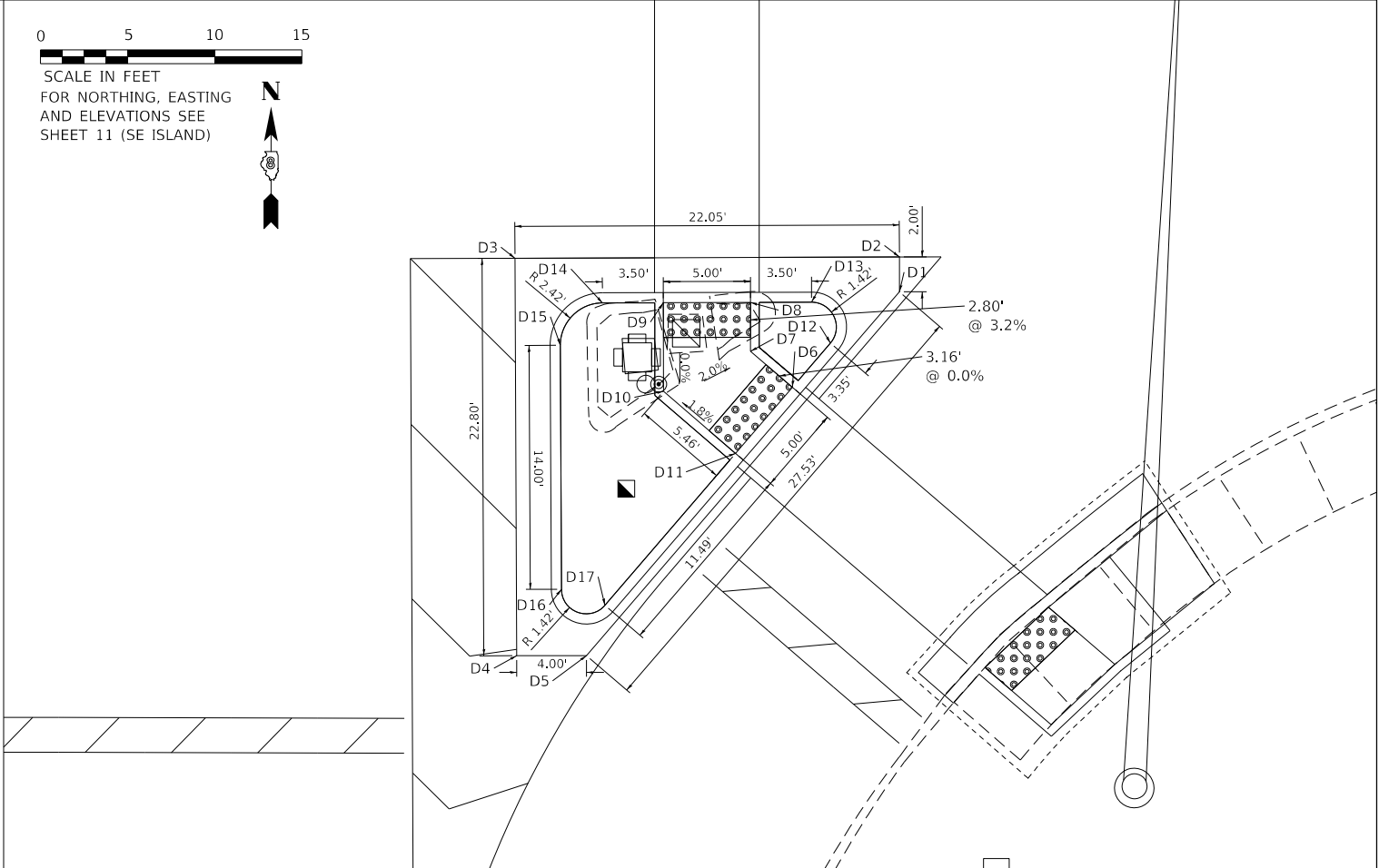
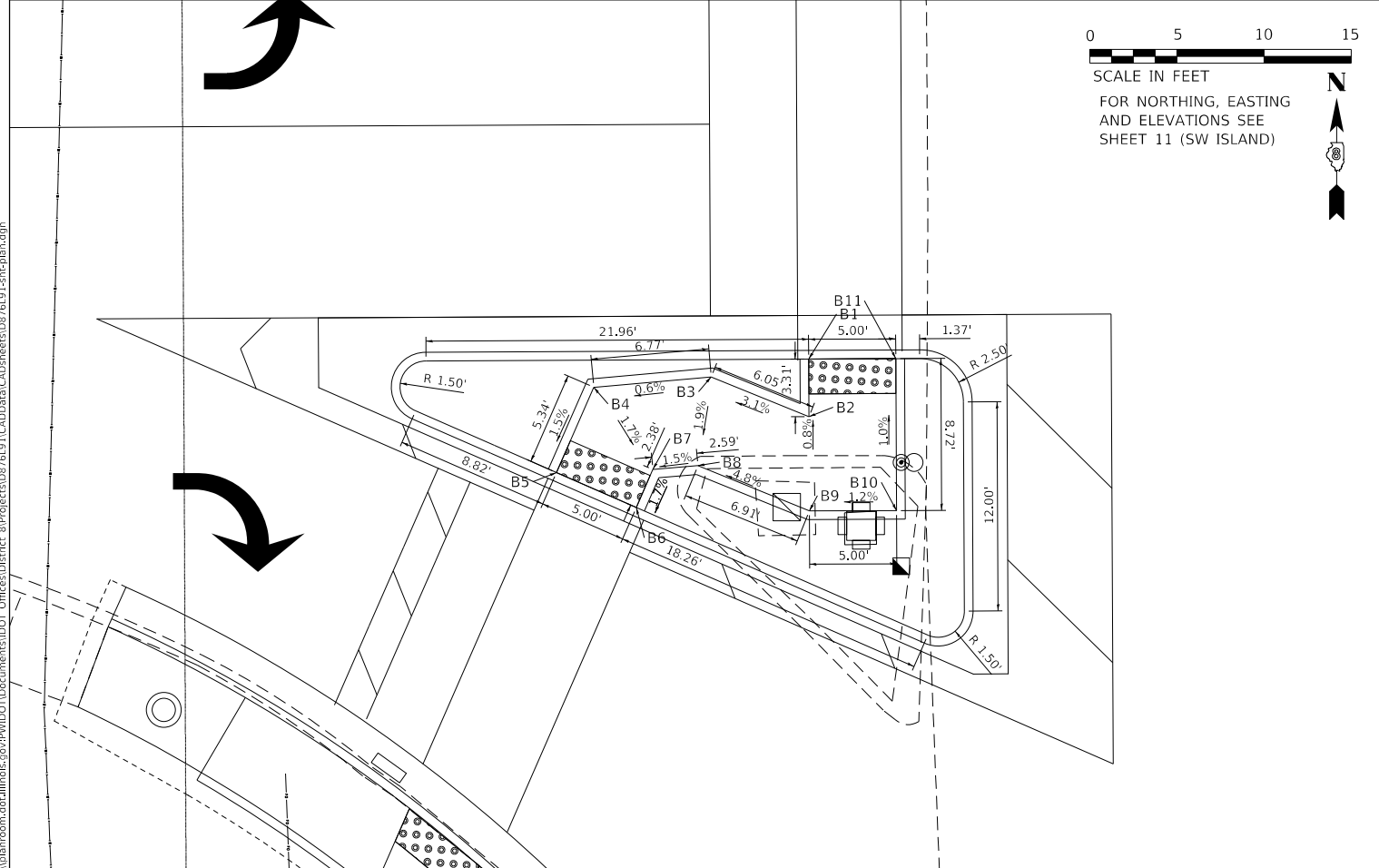
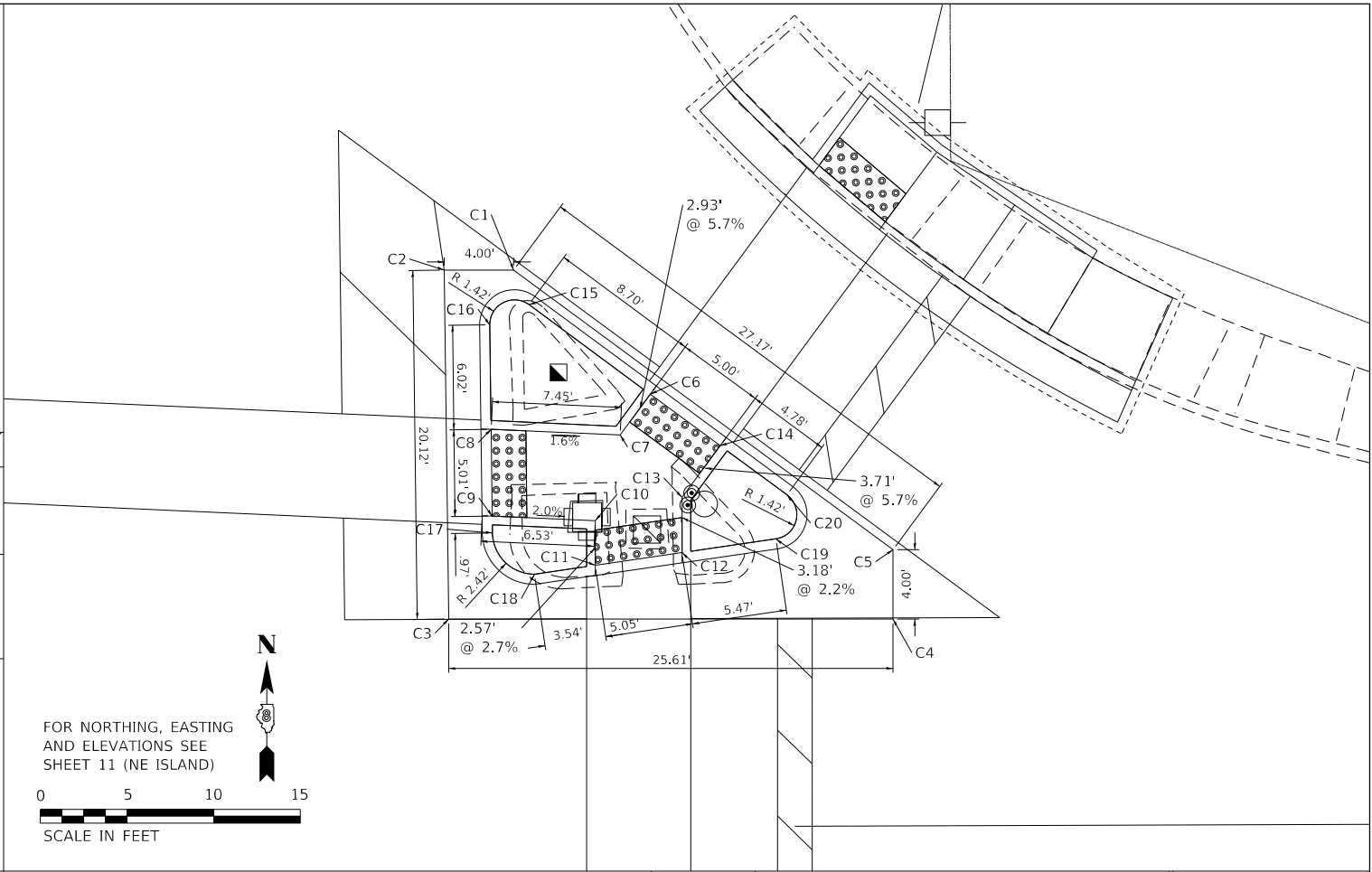
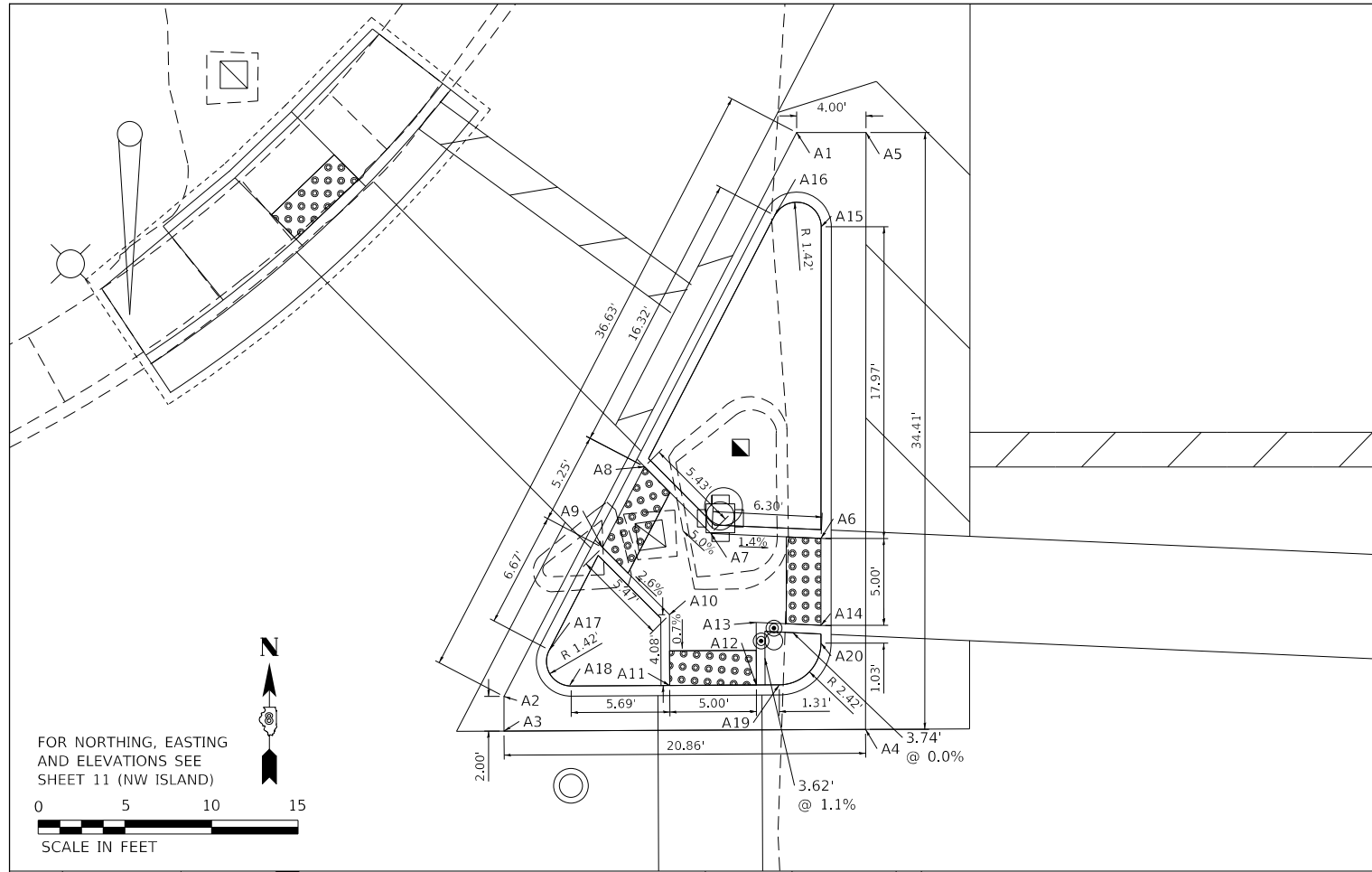
**STATE OF ILLINOIS
DEPARTMENT OF TRANSPORTATION**

**PLAN SHEET
NIEDRINGHAUS AVE.**

SCALE: 1"=10' SHEET 1 OF 3 SHEETS STA. TO STA.

F.A.P. RTE. 2	SECTION 103SW-1	COUNTY MADISON	TOTAL SHEETS 22	SHEET NO. 7
CONTRACT NO. 76L91				
ILLINOIS FED. AID PROJECT				

MODEL: Default
 FILE: Model_PlanSheet.dwg
 PROJECT: 103SW-1
 DRAWING: 76L91-PLAN-01.dwg



MODEL: Default
 FILE: \\nrc\p\planningroom\dat\illinois\gov\p\w\dot\Documents\DOT - Offices\District 8\Projects\087619\ICADD\Drawings\CADD\Sheets\087619-1-11-18.dwg

USER NAME = smrhma	DESIGNED -	REVISED -
	DRAWN -	REVISED -
PLOT SCALE = 40.0000 ' / in.	CHECKED -	REVISED -
PLOT DATE = 10/17/2019	DATE -	REVISED -

STATE OF ILLINOIS
DEPARTMENT OF TRANSPORTATION

MEDIAN ISLAND DETAILS
NIEDRINGHAUS AVE.

SCALE: 1"=5' SHEET 3 OF 3 SHEETS STA. TO STA.

F.A.P. RTE.	SECTION	COUNTY	TOTAL SHEETS	SHEET NO.
2	1035W-1	MADISON	22	9
CONTRACT NO. 76L91				
ILLINOIS FED. AID PROJECT				

IL 3 & NIEDRINGHAUS AVE (NW QUAD)			
POINT	NORTHING	EASTING	ELEVATION
A1	741010.6100	296376.9318	
A2	741026.8492	296394.6781	
A3	741022.9129	296387.7852	410.77
A4	741028.4319	296392.6365	ME
A5	741031.2440	296389.0090	ME
A6	741026.4585	296384.2587	410.85
A7	741022.9936	296380.6528	410.87
A8	741019.7970	296376.8133	411.23
A9	741016.6003	296372.9739	ME
A10	741012.7679	296375.5121	ME
A11	741015.9460	296379.9705	411.15
A12	741019.4480	296384.1793	410.79

**ME = MATCH EXISTING

IL 3 & NIEDRINGHAUS AVE (SW QUAD)			
POINT	NORTHING	EASTING	ELEVATION
C1	740882.2043	296402.4646	
C2	740911.6525	296366.8122	
C3	740898.8300	296383.0646	410.90
C4	740905.2282	296373.6496	411.70
C5	740909.2843	296365.7826	ME
C6	740904.6810	296364.0590	ME
C7	740900.9081	296371.1323	411.80
C8	740894.1272	296381.0069	411.00
C9	740890.7272	296384.9769	411.10
C10	740895.5498	296387.0870	411.07

**ME = MATCH EXISTING

IL 3 & NIEDRINGHAUS AVE (NE QUAD)			
POINT	NORTHING	EASTING	ELEVATION
B1	741015.6898	296535.5490	
B2	740997.7286	296559.6352	
B3	741009.2816	296546.2539	410.59
B4	741005.9526	296550.7450	410.99
B5	741002.8488	296555.6064	411.07
B6	741000.0908	296550.6861	ME
B7	741004.8803	296562.8170	ME
B8	741007.1899	296558.2001	411.15
B9	741010.2446	296553.7079	411.07
B10	741013.2992	296549.2156	410.67
B11	741016.5491	296545.3997	410.58
B12	741012.5146	296542.4254	410.50

**ME = MATCH EXISTING

IL 3 & NIEDRINGHAUS AVE (SE QUAD)			
POINT	NORTHING	EASTING	ELEVATION
D1	740919.9966	296557.0235	
D2	740908.5730	296544.1667	
D3	740908.8604	296547.9817	412.14
D4	740905.5948	296551.7805	412.08
D5	740909.0466	296555.4351	412.00
D6	740911.3682	296558.2854	411.94
D7	740913.6897	296561.1357	ME
D8	740917.8793	296558.4040	ME
D9	740915.2083	296555.1415	411.85
D10	740912.3258	296551.6206	411.92

**ME = MATCH EXISTING

MODEL: Default
 FILE: Model: P:\pub\lanscom.dwg
 I:\projects\087619\1\CAD\DATA\CAD\sheet\087619-1-11-11.dwg

USER NAME = smithma	DESIGNED -	REVISED -
	DRAWN -	REVISED -
PLOT SCALE = 40.0000 ' / in.	CHECKED -	REVISED -
PLOT DATE = 10/18/2019	DATE -	REVISED -

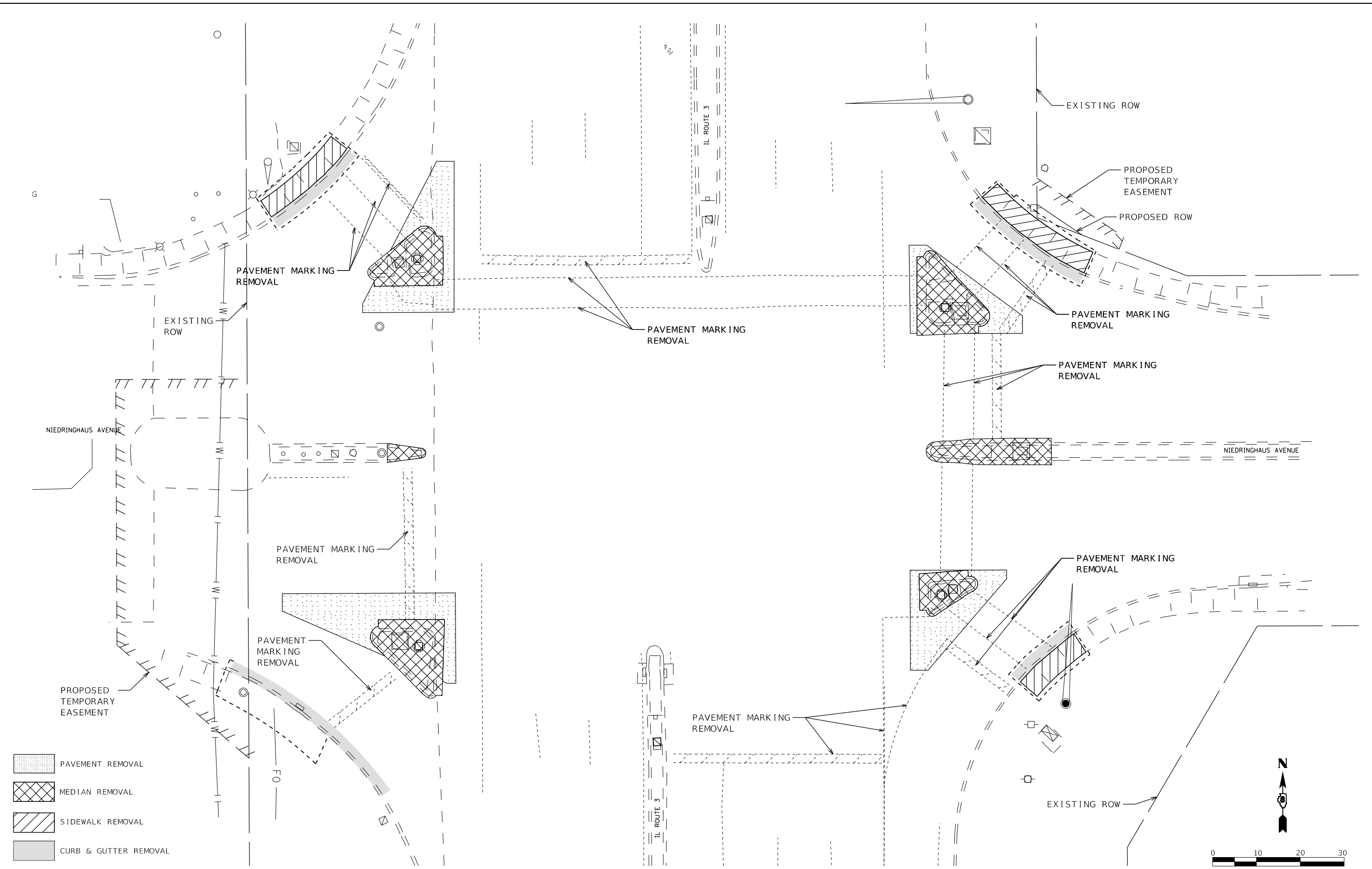
**STATE OF ILLINOIS
DEPARTMENT OF TRANSPORTATION**

**NORTHING, EASTING
AND ELEVATIONS**

SCALE: NTS SHEET 1 OF 2 SHEETS STA. TO STA.

F.A.P. RTE.	SECTION	COUNTY	TOTAL SHEETS	SHEET NO.
2	1035W-1	MADISON	22	10
CONTRACT NO. 76L91				
ILLINOIS FED. AID PROJECT				

MODEL: Default
 FILE: \\nhdpc-prod\pub\baron\m.d\at\illinois.gov\PI\DOT\Documents\DOT_Offices\District 8\Projects\087619\ICAD\Drawings\CAD\Sheets\087619-1-18-removal.dgn



USER NAME = smthma	DESIGNED -	REVISED -
	DRAWN -	REVISED -
PLOT SCALE = 40.0000' / in.	CHECKED -	REVISED -
PLOT DATE = 10/18/2019	DATE -	REVISED -

STATE OF ILLINOIS
DEPARTMENT OF TRANSPORTATION

REMOVAL SHEET			
NIEDRINGHAUS AVE.			
SCALE: 1"=10'	SHEET 1	OF 1 SHEETS	STA. TO STA.

F.A.P. RTE.	SECTION	COUNTY	TOTAL SHEETS	SHEET NO.
2	1035W-1	MADISON	22	12
CONTRACT NO. 76L91				
ILLINOIS FED. AID PROJECT				

STATE OF ILLINOIS
DEPARTMENT OF TRANSPORTATION
OFFICE OF HIGHWAYS PROJECT IMPLEMENTATION

RECEIVED:07-15-19

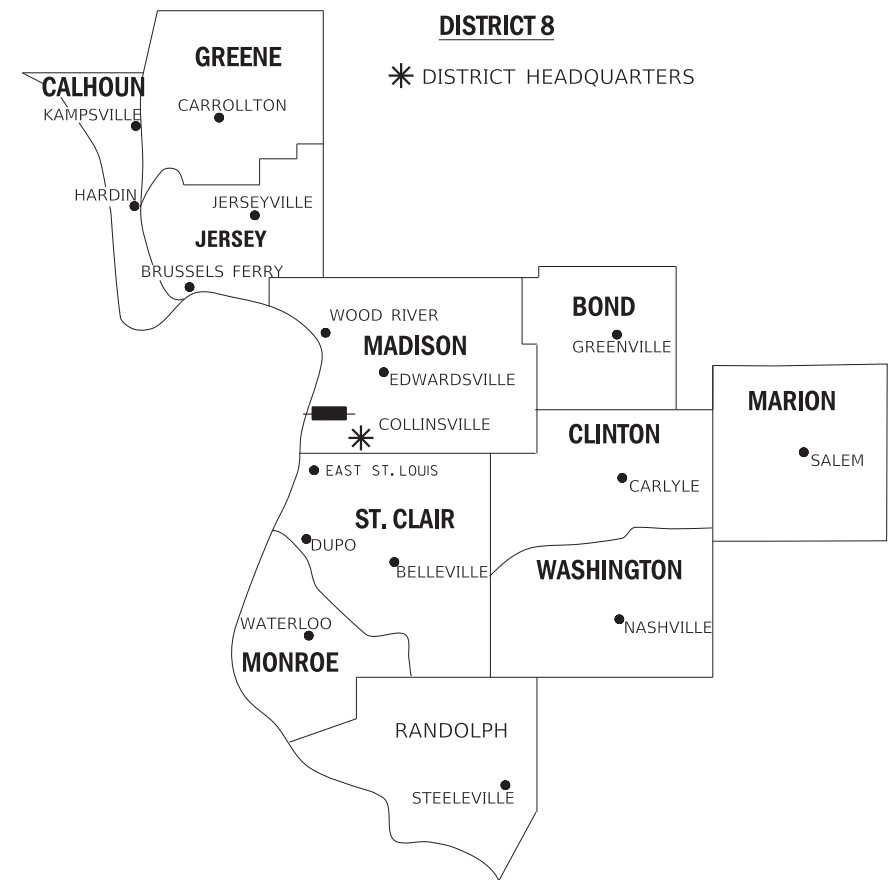
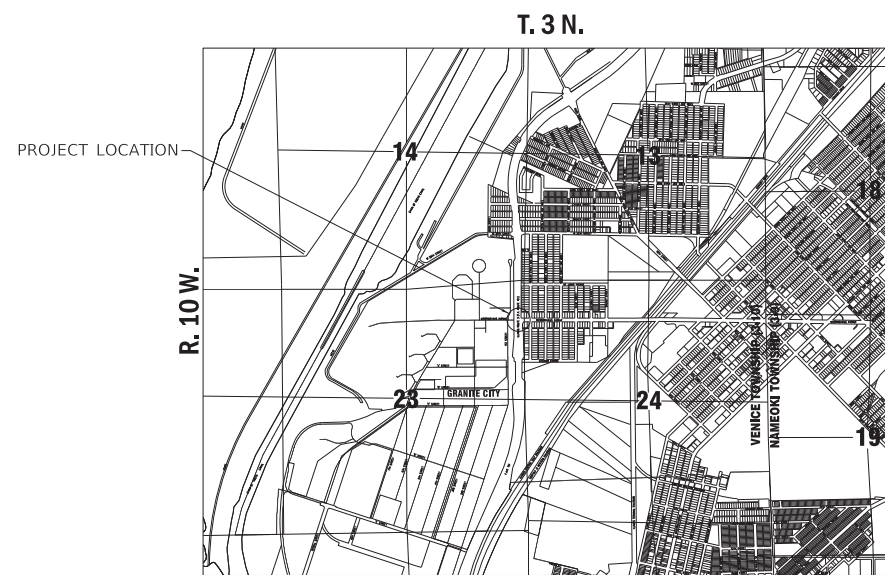
SPACE RESERVED FOR RECORDING OFFICER

SHEET INDEX		
SHEET NO.	STATION to STATION	DESCRIPTION
1	N/A	COVER SHEET
2	N/A	LEGENDS
3	N/A	PLAT OF HIGHWAYS (NE QUADRANT NIEDRINGHAUS)
4	N/A	PLAT OF HIGHWAYS (SW QUADRANT NIEDRINGHAUS)
5	N/A	TOTAL HOLDING

PLAT OF HIGHWAYS

**FAP 2 (IL ROUTE 3)
SECTION 103SW-1
MADISON COUNTY
JOB NO. R-98-019-17**

PRELIMINARY



LOCATION OF SECTION INDICATED THUS:

PREPARED BY:



2100 State Street, P.O. Box 1325
Granite City, IL 62040-4725
100 North Research Drive
Edwardsville, IL 62025-3638
330 N. Fourth Street, Suite 200
St. Louis, MO 63102-2007
555 West Central Rd, Suite 101
Hoffman Estates, IL 60192-1942



PHILIP H. HUSKEY, PLS NO. 35-2659
LICENSE EXPIRATION DATE: 11/30/2020

SHEET 1 OF 5

ILLINOIS DEPARTMENT OF TRANSPORTATION OFFICE OF HIGHWAYS PROJECT IMPLEMENTATION/REGION 5/DISTRICT 8 1102 EASTPORT PLAZA DRIVE COLLINSVILLE, ILLINOIS 62234-6198				
F.A.P. RTE.	SECTION	COUNTY	TOTAL SHEETS	SHEET NO.
2	103SW-1	MADISON	22	13
			CONTRACT NO. 76L91	
FED. ROAD DIST. NO.		ILLINOIS	FED. AID PROJECT	

SEE LEGENDS, TOPOGRAPHIC STATEMENT, SURVEYORS NOTE(S) AND BASIS OF COORDINATES & BEARINGS STATEMENT ON SHEET 2

COORDINATE TABLE		
POINT NUMBER	NORTH	EAST
4000	741015.7667	296550.0198
4001	741008.7907	296560.2889
4002	741012.7667	296550.0326
4003	741021.7667	296550.0326
4004	741008.3348	296569.7648
4005	741005.5376	296568.6804
144	741023.2300	296538.0900

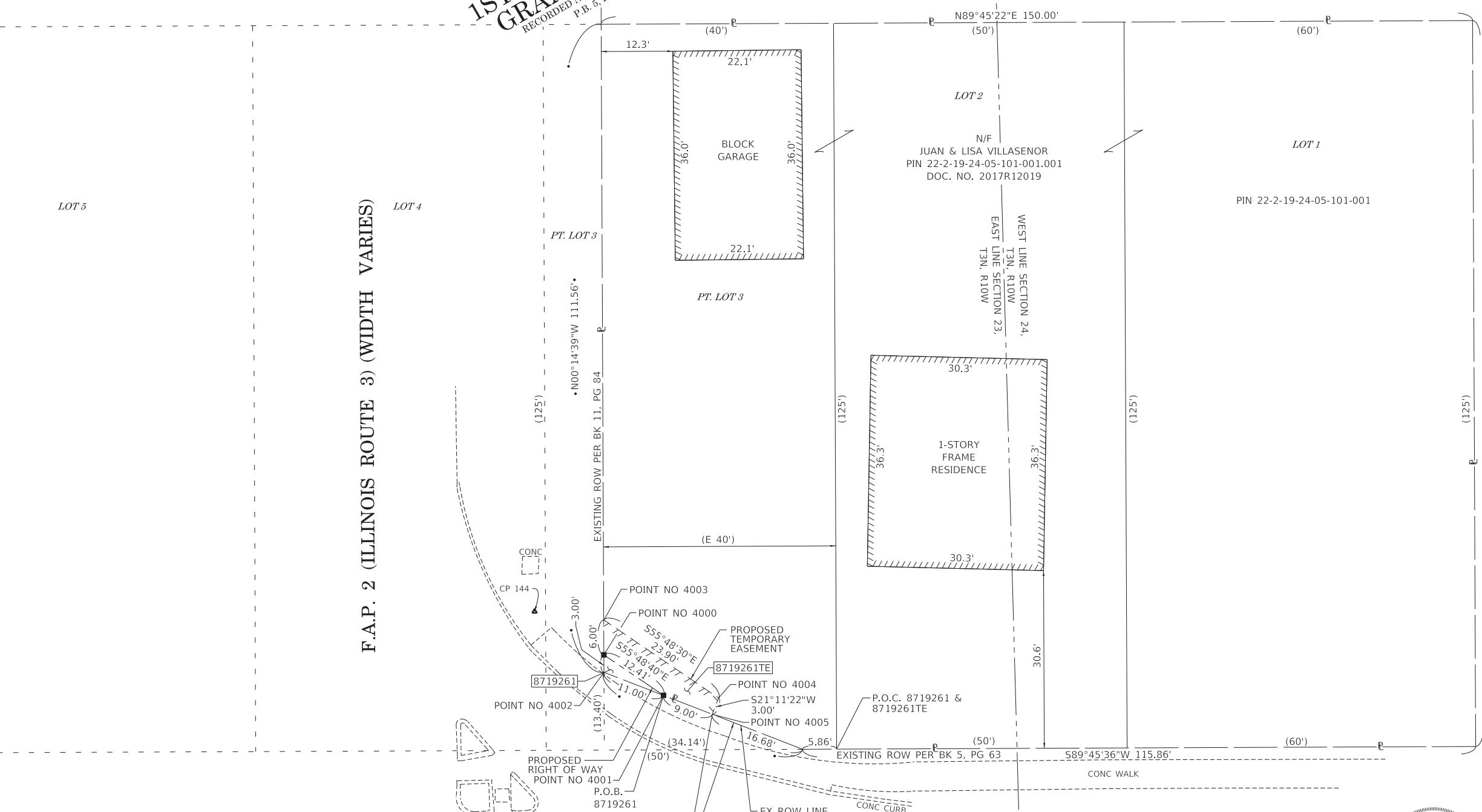
BLOCK F
1ST ADDITION TO
GRANITE CITY
 RECORDED NOVEMBER 8TH, 1894
 P.B. 5, PG. 63

RECEIVED:07-15-19

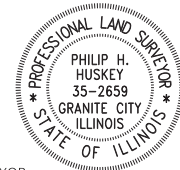
SPACE RESERVED FOR RECORDING OFFICER

PRELIMINARY

POPLAR STREET (60' W)

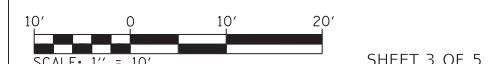


JUNEAU ASSOCIATES, INC., P.C.
 ENGINEERING & LAND SURVEYING
 2100 State Street, P.O. Box 1325
 Granite City, IL 62040-4725
 100 North Research Drive
 Edwardsville, IL 62025-3638
 330 N. Fourth Street, Suite 200
 St. Louis, MO 63102-2007
 555 West Central Rd., Suite 101
 Hoffman Estates, IL 60192-1942
 Professional Design Firm License No. 184.003389



ILLINOIS DEPARTMENT OF TRANSPORTATION
PLAT OF HIGHWAYS

FAP 2 (IL ROUTE 3)
 SECTION 103SW-1
 MADISON COUNTY
 JOB NO. R-98-019-17



F.A.P. RTE.	SECTION	COUNTY	TOTAL SHEETS	SHEET NO.
2	103SW-1	MADISON	22	15

ILLINOIS DEPARTMENT OF TRANSPORTATION
 OFFICE OF HIGHWAYS PROJECT IMPLEMENTATION/REGION 5/DISTRICT 8
 1102 EASTPORT PLAZA DRIVE
 COLLINSVILLE, ILLINOIS 62234-6198

COMPLETION DATE OF FIELD WORK PERFORMED
 LAND SURVEY: 12/18/17 ROW STAKING:
 CONTRACT NO. 76L91
 FED. ROAD DIST. NO. ILLINOIS FED. AID PROJECT

STATE OF ILLINOIS)
) SS
 COUNTY OF MADISON)

I, PHILIP H. HUSKEY, AN ILLINOIS PROFESSIONAL LAND SURVEYOR, STATE THAT I HAVE SURVEYED THE PLAT OF HIGHWAY SHOWN HEREON AND THAT THIS PROFESSIONAL SERVICE CONFORMS TO THE CURRENT ILLINOIS MINIMUM STANDARDS FOR A BOUNDARY SURVEY FOR THE PROPOSED PARCEL TO BE ACQUIRED BY THE STATE OF ILLINOIS, DEPARTMENT OF TRANSPORTATION, SHOWN HEREON.

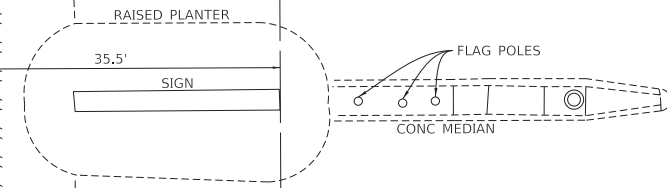
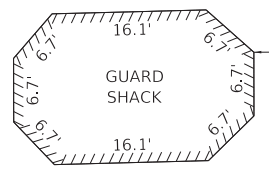
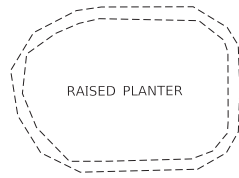
DATED _____
 PHILIP H. HUSKEY, PLS NO. 35-2659
 LICENSE EXPIRATION DATE: 11/30/2020

* SEE TOTAL HOLDING AREA SOURCE TABLE ON SHEET 2

PARCEL NO.	OWNER	TOTAL HOLDING ACRES	FEE SIMPLE ACQUISITION						REMAINDER ACRES	EASEMENTS		PERMANENT TAX NUMBER AFFECTED	PROPERTY ACQUIRED BY
			GROSS		PREVIOUSLY DEDICATED		NET			TE = TEMPORARY			
			ACRES	SQ FT	ACRES	SQ FT	ACRES	SQ FT		ACRES	SQ FT		
8719261	JUAN VILLASEÑOR & LISA VILLASEÑOR, HUSBAND AND WIFE, AS JOINT TENANTS TITLE REPORT NO. 18-2017MA-5052.0	0.4251	0.0003	15	N/A	N/A	0.0003	15	0.4248	0.0024	103	22-2-19-24-05-101-001.001	SIDEWALK CONSTRUCTION & GRADING

SEE LEGENDS, TOPOGRAPHIC STATEMENT, SURVEYORS NOTE(S) AND BASIS OF COORDINATES & BEARINGS STATEMENT ON SHEET 2

COORDINATE TABLE		
POINT NUMBER	NORTH	EAST
4077	740975.9714	296369.8803
4078	740889.4553	296370.2870
4079	740915.3010	296340.1652
4080	740975.8303	296339.8806
283	740058.4790	296374.1910
43	740882.2869	296385.0407



RECEIVED:07-16-19

SPACE RESERVED FOR RECORDING OFFICER

PRELIMINARY

NIEDRINGHAUS AVENUE (F.K.A. PACIFIC AVENUE)
HMA

NIEDRINGHAUS AVENUE
(F.K.A. PACIFIC AVENUE) (80' W)

CEDAR STREET (60' W)

F.A.P. 2 (ILLINOIS ROUTE 3) (WIDTH VARIES)
HMA

BLOCK G
1ST ADDITION TO
GRANITE CITY
RECORDED NOVEMBER 6TH, 1884
P.B. 5, PG. 63

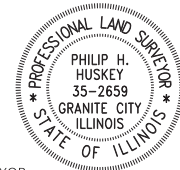
N/F
AMERICA'S CENTRAL PORT DISTRICT
(F/K/A - TRI-CITY REGIONAL POINT DISTRICT)
PIN 22-1-19-23-00-000-001.005
1635 W 1ST STREET
GRANITE CITY, IL 62040
BK 4500, PG 3211



POC PARCEL 871926TE
FOUND 3" STEEL PIPE W/
3" STEEL CAP (APPARENT GOVERNMENT
PROPERTY MARKER)
POINT NO 283

STATE OF ILLINOIS)
) SS
COUNTY OF MADISON)

I, PHILIP H. HUSKEY, AN ILLINOIS PROFESSIONAL LAND SURVEYOR,
STATE THAT I HAVE SURVEYED THE PLAT OF HIGHWAY SHOWN HEREON AND THAT THIS
PROFESSIONAL SERVICE CONFORMS TO THE CURRENT ILLINOIS MINIMUM STANDARDS FOR
A BOUNDARY SURVEY FOR THE PROPOSED PARCEL TO BE ACQUIRED BY THE STATE OF
ILLINOIS, DEPARTMENT OF TRANSPORTATION, SHOWN HEREON.



DATED _____
PHILIP H. HUSKEY, PLS NO. 35-2659
LICENSE EXPIRATION DATE: 11/30/2020

JUNEAU
ASSOCIATES, INC., P.C.
ENGINEERING & LAND SURVEYING
2100 State Street, P.O. Box 1325
Granite City, IL 62040-4725
100 North Research Drive
Edwardsville, IL 62025-3638
330 N. Fourth Street, Suite 200
St. Louis, MO 63102-2007
555 West Central Rd., Suite 101
Hoffman Estates, IL 60192-1942
Professional Design Firm License No. 184.003389

ILLINOIS DEPARTMENT OF TRANSPORTATION
PLAT OF HIGHWAYS

FAP 2 (IL ROUTE 3)
SECTION 103SW-1
MADISON COUNTY
JOB NO. R-98-019-17



SHEET 4 OF 5

ILLINOIS DEPARTMENT OF TRANSPORTATION
OFFICE OF HIGHWAYS PROJECT IMPLEMENTATION/REGION 5/DISTRICT 8
1102 EASTPORT PLAZA DRIVE
COLLINGSVILLE, ILLINOIS 62234-6198

F.A.P. RTE.	SECTION	COUNTY	TOTAL SHEETS	SHEET NO.
2	103SW-1	MADISON	22	16
FED. ROAD DIST. NO.			ILLINOIS	
FED. AID PROJECT			CONTRACT NO. 76L91	

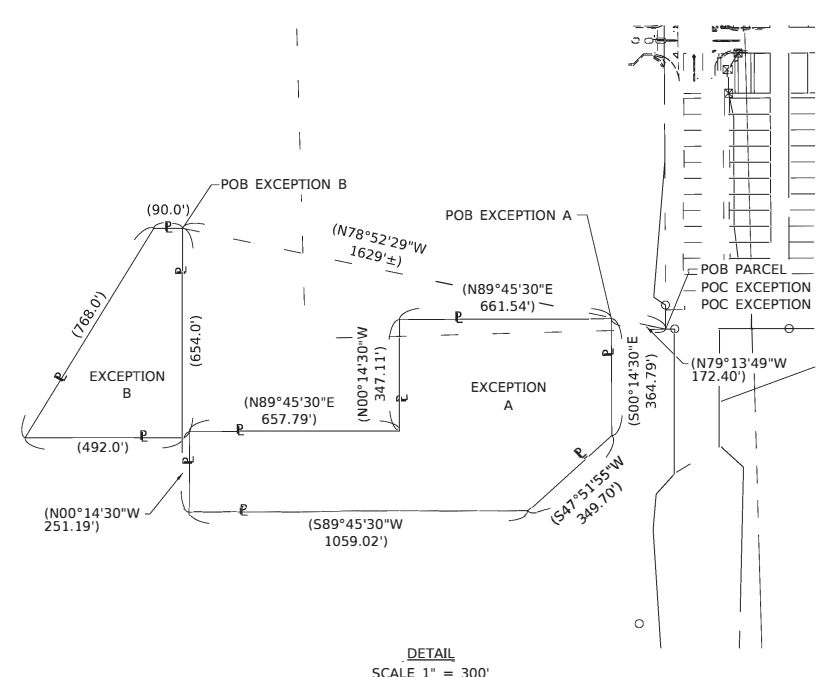
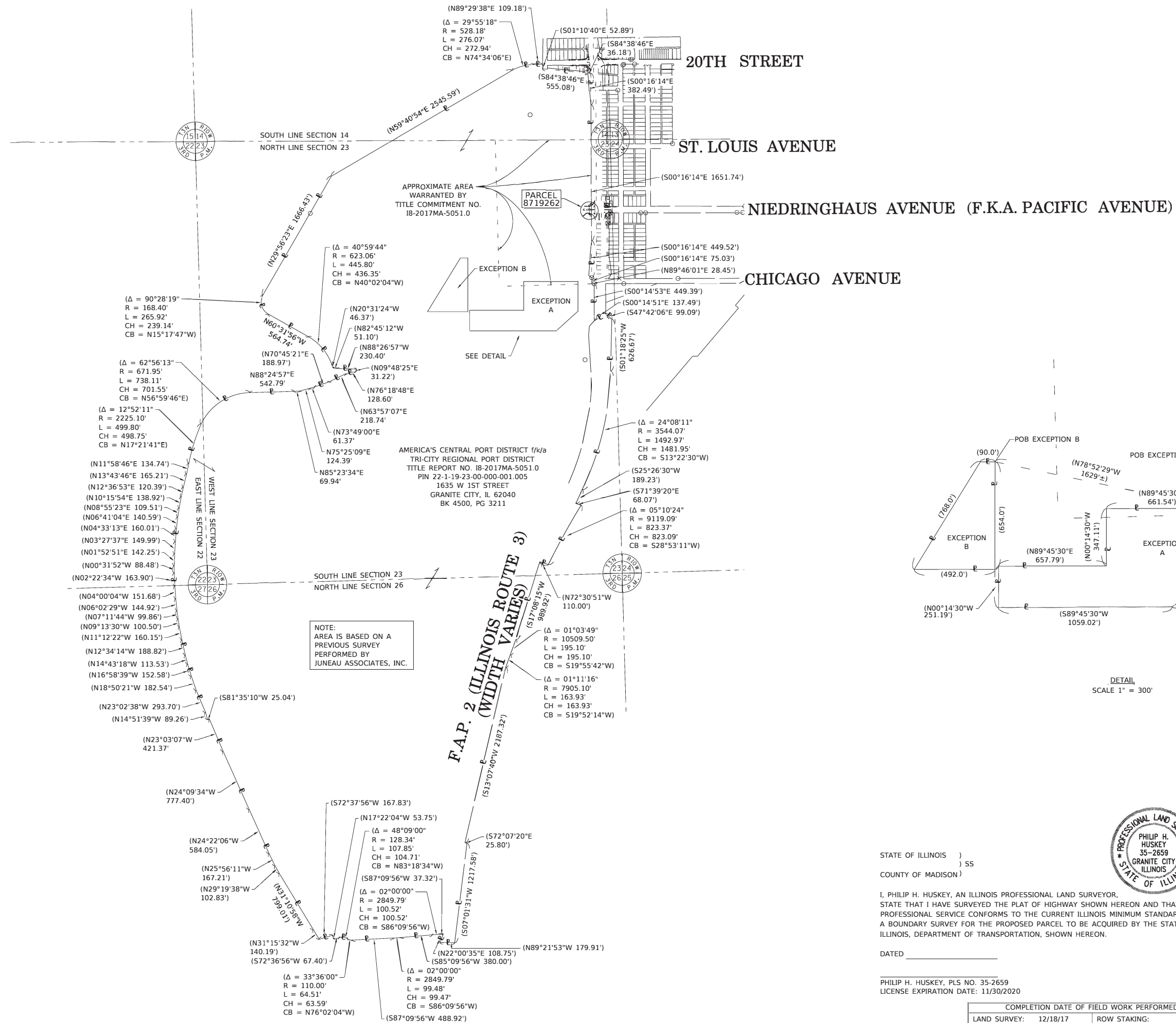
PARCEL NO.	OWNER	TOTAL HOLDING	FEE SIMPLE ACQUISITION						REMAINDER	EASEMENTS		PERMANENT TAX NUMBER AFFECTED	PROPERTY ACQUIRED BY
			GROSS		PREVIOUSLY DEDICATED		NET			TE = TEMPORARY			
			ACRES	SQ FT	ACRES	SQ FT	ACRES	SQ FT		ACRES	SQ FT		
8719262	AMERICA'S CENTRAL PORT DISTRICT f/k/a TRI-CITY REGIONAL PORT DISTRICT TITLE REPORT NO. 18-2017MA-5051.0	825.19	N/A	N/A	N/A	N/A	N/A	N/A	825.19	0.0506	2,206	22-1-19-23-00-000-001.005	



RECEIVED: 07-15-19

SPACE RESERVED FOR RECORDING OFFICER

PRELIMINARY



JUNEAU ASSOCIATES, INC., P.C.
ENGINEERING & LAND SURVEYING

Professional Design Firm License No. 184.003389

2100 State Street, P.O. Box 1325
Granite City, IL 62040-4725
100 North Research Drive
Edwardsville, IL 62025-3638
330 N. Fourth Street, Suite 200
St. Louis, MO 63102-2007
555 West Central Rd., Suite 101
Hoffman Estates, IL 60192-1942



ILLINOIS DEPARTMENT OF TRANSPORTATION
PLAT OF HIGHWAYS

FAP 2 (IL ROUTE 3)
SECTION 103SW-1
MADISON COUNTY
JOB NO. R-98-019-17
TOTAL HOLDING

ILLINOIS DEPARTMENT OF TRANSPORTATION
OFFICE OF HIGHWAYS PROJECT IMPLEMENTATION/REGION 5/DISTRICT 8
1102 EASTPORT PLAZA DRIVE
COLLINGSVILLE, ILLINOIS 62234-6198

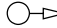


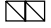
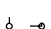















F.A.P. RTE.	SECTION	COUNTY	TOTAL SHEETS	SHEET NO.
2	103SW-1	MADISON	22	17

CONTRACT NO. 76L91

FED. ROAD DIST. NO.	ILLINOIS	FED. AID PROJECT

SHEET 5 OF 5

TRAFFIC SIGNALS LEGEND

	EXISTING SIGNAL POST
	EXISTING TRAFFIC SIGNAL MAST ARM
	EXISTING HANDHOLE
	EXISTING DOUBLE HANDHOLE
	EXISTING DETECTOR LOOP
	EXISTING CONTROLLER
	EXISTING SERVICE INSTALLATION
	EXISTING SIGNAL HEAD, PEDESTRIAN
	EXISTING PEDESTRIAN PUSHBUTTON DETECTOR
	EXISTING UNDERGROUND CONDUIT
	PROPOSED SIGNAL POST
	PROPOSED SIGNAL HEAD WITH BACKPLATE, MAST ARM MOUNTED
	PROPOSED HANDHOLE
	PROPOSED DOUBLE HANDHOLE
	PROPOSED DETECTOR LOOP
	PROPOSED CONTROLLER
	PROPOSED SERVICE INSTALLATION
	PROPOSED PUSH BUTTON, PEDESTRIAN
	PROPOSED SIGNAL HEAD, PEDESTRIAN
	PROPOSED UNDERGROUND CONDUIT

CODE NO.	ITEM	UNIT	QUANTITIES TOTAL
80300100	LOCATING UNDERGROUND CABLE	FOOT	30
81028320	UNDERGROUND CONDUIT, PVC, 1" DIA.	FOOT	98
81028340	UNDERGROUND CONDUIT, PVC, 1 1/2" DIA.	FOOT	10
81028350	UNDERGROUND CONDUIT, PVC, 2" DIA.	FOOT	39
81028370	UNDERGROUND CONDUIT, PVC, 3" DIA.	FOOT	15
81028400	UNDERGROUND CONDUIT, PVC, 5" DIA.	FOOT	41
81400700	HANDHOLE, PORTLAND CEMENT CONCRETE	EACH	4
85704804	FULL-ACTUATED CONTROLLER, STANDARD SEQUENCE IV, 8 PHASES, IN TYPE IV CABINET	EACH	1
87301215	ELECTRIC CABLE IN CONDUIT, SIGNAL NO. 14 2C	FOOT	1337
87301225	ELECTRIC CABLE IN CONDUIT, SIGNAL NO. 14 3C	FOOT	1396
87301245	ELECTRIC CABLE IN CONDUIT, SIGNAL NO. 14 5C	FOOT	3194
87301255	ELECTRIC CABLE IN CONDUIT, SIGNAL NO. 14 7C	FOOT	914
87301305	ELECTRIC CABLE IN CONDUIT, LEAD-IN, NO. 14 1 PAIR	FOOT	2656
87301900	ELECTRIC CABLE IN CONDUIT, EQUIPMENT GROUNDING CONDUCTOR, NO. 6 1C	FOOT	658
87502680	TRAFFIC SIGNAL POST, ALUMINUM 14 FT.	EACH	4
87600100	PEDESTRIAN PUSH-BUTTON POST, TYPE I	EACH	2
87800100	CONCRETE FOUNDATION, TYPE A	FOOT	12
88040230	SIGNAL HEAD, POLYCARBONATE, LED, 2-FACE, 3-SECTION, BRACKET MOUNTED	EACH	2
88040250	SIGNAL HEAD, POLYCARBONATE, LED, 2-FACE, 1-3-SECTION, 1-4-SECTION, BRACKET MOUNTED	EACH	2
88102810	PEDESTRIAN SIGNAL HEAD, POLYCARBONATE, LED, 1-FACE, BRACKET MOUNTED	EACH	6
88500100	INDUCTIVE LOOP DETECTOR	EACH	16
89502316	REBUILD EXISTING HANDHOLE	EACH	1
88600100	DETECTOR LOOP, TYPE I	FOOT	2871
88800100	PEDESTRIAN PUSH-BUTTON	EACH	6
89502300	REMOVE ELECTRIC CABLE FROM CONDUIT	FOOT	7400
89502350	REMOVE AND REINSTALL ELECTRIC CABLE FROM CONDUIT	FOOT	1158
89502375	REMOVE EXISTING TRAFFIC SIGNAL EQUIPMENT	EACH	5
89502380	REMOVE EXISTING HANDHOLE	EACH	4
89502385	REMOVE EXISTING CONCRETE FOUNDATION	EACH	4

ELECTRICAL GENERAL NOTES

- ALL VEHICLE AND PEDESTRIAN SIGNAL HEADS SHALL HAVE 12" SECTIONS. MOUNTING HARDWARE SHALL BE UNPAINTED ALUMINUM. ALL BOLTS, SCREWS, NUTS AND WASHERS SHALL BE STAINLESS STEEL. ANTI-SEIZE PASTE COMPOUND SHALL BE USED ON ALL MOUNTING HARDWARE FIELD CONNECTIONS.
- BACKPLATES SHALL BE ABS PLASTIC.
- THE CONTROLLER CABINET SHALL BE UNPAINTED ALUMINUM.
- THE LOCATION OF MAST ARM SUPPORTS SHALL BE APPROVED BY THE ENGINEER BEFORE FOUNDATIONS ARE CONSTRUCTED. MAST ARM POLES SHALL BE LOCATED A MINIMUM OF 10 FEET FROM THE EDGE OF PAVEMENT OR 2 FEET FROM THE EDGE OF SHOULDER, WHICHEVER DISTANCE IS GREATER. IN CURBED SECTIONS, THE MAST ARM POLES SHALL BE LOCATED A MINIMUM OF 5 FEET FROM THE FACE OF THE CURB. THESE DISTANCES ARE TO THE NEAR FACE OF THE MAST ARM POLE.
- ALL TRAFFIC SIGNAL CABLES SHALL BE #14 AWG STRANDED COPPER UNLESS OTHERWISE SPECIFIED. TERMINAL ENDS SHALL HAVE CRIMPED-ON FORK TONGUE CONNECTORS.
- THE LOCATION OF ALL DETECTOR LOOPS SHALL BE APPROVED BY THE ENGINEER BEFORE ANY SLOTS ARE SAWED IN THE PAVEMENT.
- DETECTOR LOOP LEAD-IN SPLICES SHALL BE MADE IN A HANDHOLE PER SECTION 873 OF THE STANDARD SPECIFICATIONS. CONDUCTORS SHALL BE SPLICED IN A RIGID MOLD FILLED WITH NON-HARDENING EPOXY FILLER. ROSIN-CORE SOLDER SHALL BE USED.
- ALL HANDHOLES SHALL BE CAST-IN-PLACE PORTLAND CEMENT CONCRETE (PER ARTICLE 814.03(b)). THE CAST IN PLACE LEGEND IN THE COVER SHALL BE "TRAFFIC SIGNALS". SLOPE HANDHOLE COVERS TO MATCH PROPOSED GRADE ELEVATIONS.
- ALL INDUCTIVE LOOP DETECTORS SUPPLIED FOR THIS PROJECT SHALL HAVE THE CAPACITY OF OPERATING WITH BOTH DELAY AND EXTENSION MODES ACTIVE, IF A TIME SETTING IS PROGRAMMED. THEY SHALL BE RACK MOUNTED.

MODEL: Default
 FILE: \\nas01c.pva.state.il.us\pub\baronm.d\at\links\gov\p\WIDOT\Documents\DOT_Offices\District_8\Projects\087619\CADD\data\CAD\sheets\087619_rht.txd.dgn

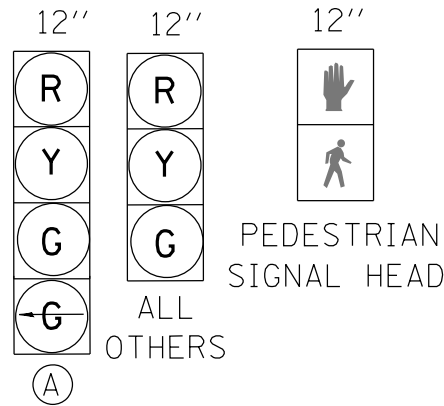
USER NAME = prestonme	DESIGNED -	REVISED -
	DRAWN -	REVISED -
PLOT SCALE = 40.0000 ' / in.	CHECKED -	REVISED -
PLOT DATE = 10/11/2019	DATE -	REVISED -

STATE OF ILLINOIS
DEPARTMENT OF TRANSPORTATION

GENERAL NOTES, LEGEND AND
TRAFFIC SIGNAL
SCHEDULE OF QUANTITIES

SCALE: SHEET OF SHEETS STA. TO STA.

F.A.P. RTE.	SECTION	COUNTY	TOTAL SHEETS	SHEET NO.
002	1035W-1	MADISON	22	18
CONTRACT NO. 76L91				
ILLINOIS FED. AID PROJECT				

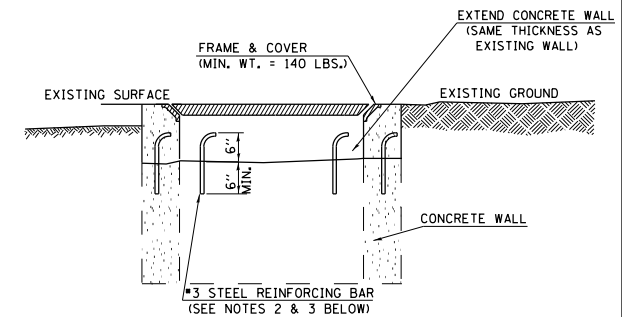


EXISTING FULL-ACTUATED CONTROLLER

EXISTING SEQUENCE OF OPERATION

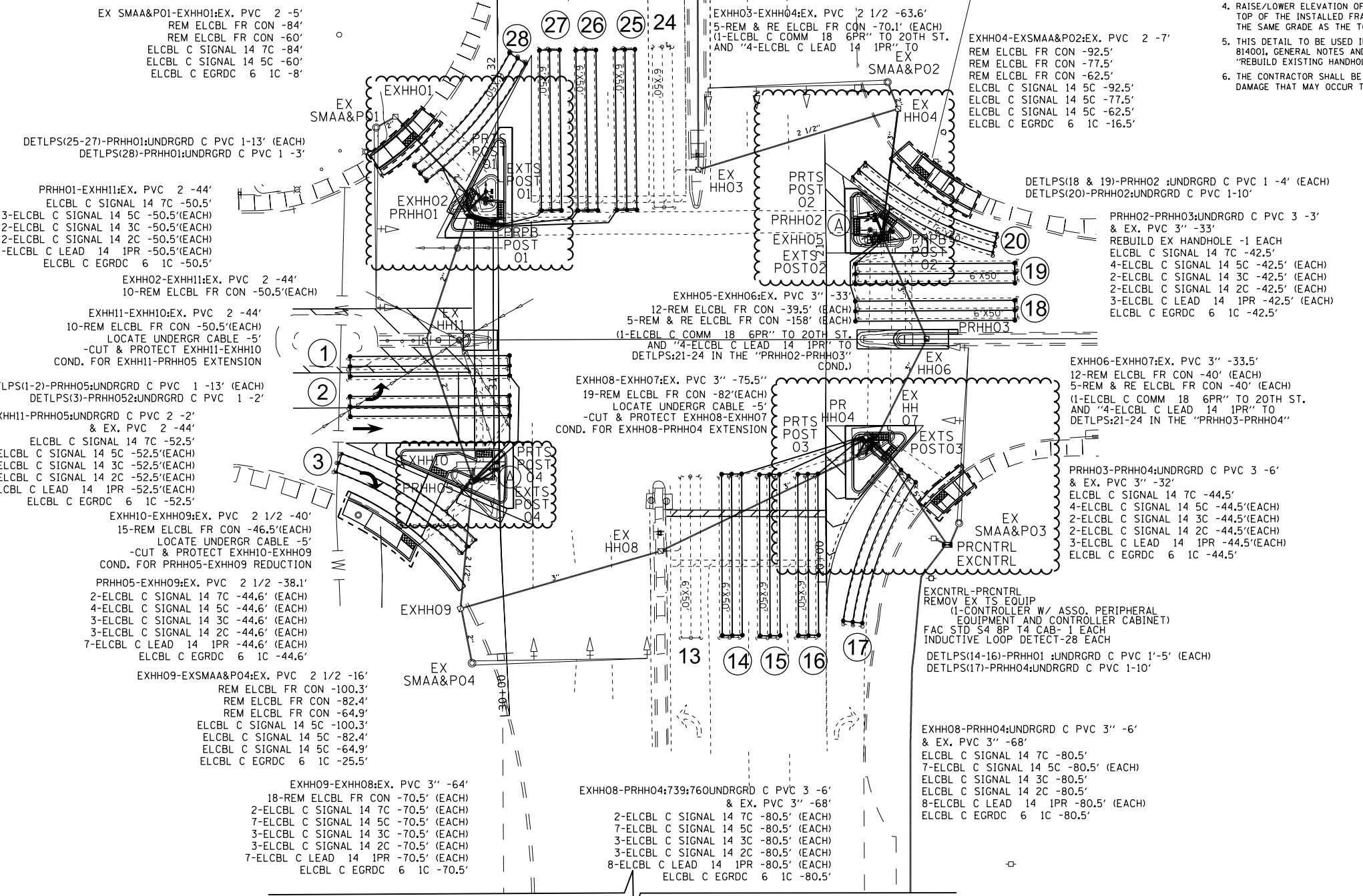
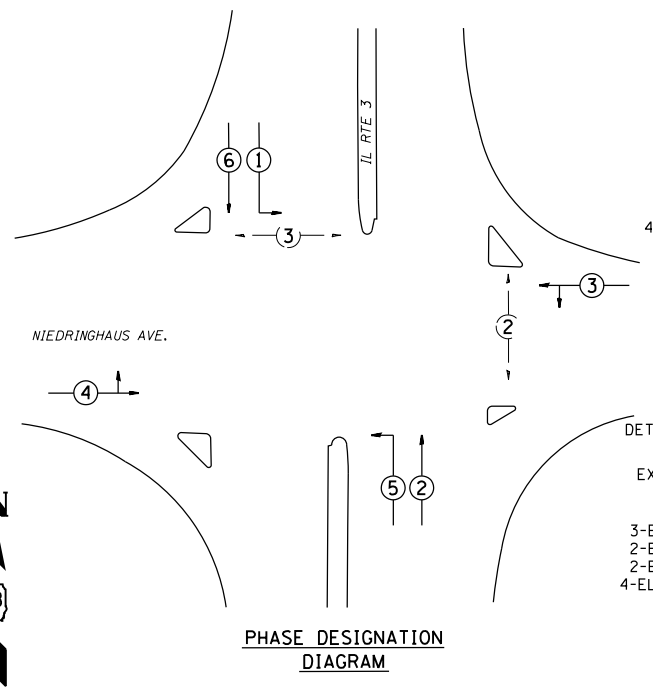
PHASE	1	2	3	4	5	6	7	8
MOVEMENT	Left	Thru	Right	Left	Thru	Right	NOT USED	NOT USED
CONCURRENT MOVEMENT PERMITTED	5 OR 6	5 OR 6	NONE	NONE	1 OR 2	1 OR 2		

* PEDSTRIAN MOVEMENT ON ACTUATION ONLY



- NOTES:
- REMOVE EXISTING FRAME AND COVER.
 - DRILL CONCRETE WALL (2 LOCATIONS PER WALL).
 - INSTALL REBAR AND GROUT.
 - RAISE/LOWER ELEVATION OF CONCRETE WALLS SO THAT THE TOP OF THE INSTALLED FRAME AND COVER WILL BE THE SAME GRADE AS THE TOP OF THE PROPOSED GRADE.
 - THIS DETAIL TO BE USED IN CONJUNCTION WITH STANDARD B14001, GENERAL NOTES AND THE SPECIAL PROVISIONS "REBUILD EXISTING HANDHOLE".
 - THE CONTRACTOR SHALL BE RESPONSIBLE FOR DAMAGE THAT MAY OCCUR TO THE EXISTING CABLES.

PROPOSED TRAFFIC SIGNAL FACES



MODEL: Default
FILE: Model: 10/11/2019 10:11:20 AM
PROJECT: 1035W-1
DRAWING: 1035W-1-TRAFFIC SIGNAL PLAN
DATE: 10/11/2019

USER NAME	DESIGNED	REVISED
prestonme	-	-
	DRAWN -	REVISED -
	CHECKED -	REVISED -
	DATE -	REVISED -

STATE OF ILLINOIS
DEPARTMENT OF TRANSPORTATION

IL 003 & NIEDRINGHAUS AVE.
TRAFFIC SIGNAL PLAN
1 OF 2

SCALE: SHEET OF SHEETS STA. TO STA.

F.A.P. RTE.	SECTION	COUNTY	TOTAL SHEETS	SHEET NO.
002	1035W-1	MADISON	22	19
CONTRACT NO. 76L91				
ILLINOIS FED. AID PROJECT				

