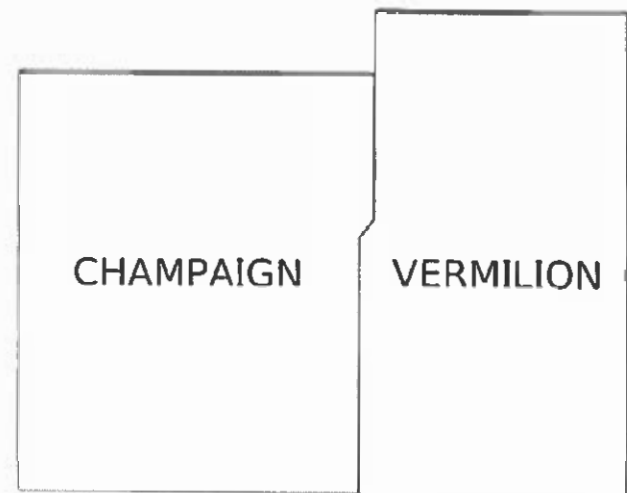


STATE OF ILLINOIS
DEPARTMENT OF TRANSPORTATION

PROPOSED
HIGHWAY PLANS

ROUTE: F.A.I. 57, F.A.I. 74 & F.A.S. 331
SECTION D5 CM INLAY 2020-2
PROJECT
STANDARD OVERLAY AND COLD MILLING
CHAMPAIGN & VERMILION COUNTY

C-95-022-20
I-57 AT I-74 RAMPS; I-74 AT THE OAKWOOD RAMPS;
OAKWOOD RD S OF I-74 INTERCHANGE



SEE SHEET NO. 3
FOR LOCATION MAP

GROSS LENGTH = 2,135.89 FT. = 0.405 MILE
NET LENGTH = 2,135.89 FT. = 0.405 MILE

F.A.I. RTE	SECTION	COUNTY	TOTAL SHEETS	SHEET No.
VAR	D5 CM INLAY 2020-2	ILLINOIS	#32	1
CHAMPAIGN & VERMILION COUNTY F.A.I. 57, F.A.I. 74 & F.A.S. 331			CONTRACT NO. 70E37	

*34 - 2 = 32 TOTAL SHEETS ANYWHERE ON 70E37
D-95-007-20



FOR INDEX OF SHEETS, SEE SHEET NO. 2
FOR SUMMARY OF QUANTITIES, SEE SHEETS NO. 4-5



FULL SIZE PLANS HAVE BEEN PREPARED USING STANDARD ENGINEERING SCALES. REDUCED SIZED PLANS WILL NOT CONFORM TO STANDARD SCALES. IN MAKING MEASUREMENTS ON REDUCED PLANS, THE ABOVE SCALES MAY BE USED.

J.U.L.E.
JOINT UTILITY LOCATION INFORMATION FOR EXCAVATORS
1-800-892-0123
OR 811 TOWNSHIPS: CHAMPAIGN & OAKWOOD

PROJECT ENGINEER: JASON STULTS
SQUAD LEADER: RYAN CARROLL
DESIGNER: CHRISTINA GOSNELL
PHONE: 217-465-4181
CONTRACT NO. 70E37

STATE OF ILLINOIS
DEPARTMENT OF TRANSPORTATION

SUBMITTED 10/18/19 TO 19
Kensil A. Barnett, Regional Engineer
Dec 6, 2019, So E.A. Etk, Engineer of Design and Environment
Dec 6, 2019, Paul P. [Signature], Director of Highways Project Implementation

PRINTED BY THE AUTHORITY
OF THE STATE OF ILLINOIS

INDEX OF SHEETS

SHEET NO.	DESCRIPTION
1	COVER SHEET
2	INDEX OF SHEETS
2	LIST OF HIGHWAY STANDARDS
2	GENERAL NOTES
3	LOCATION MAP
4-5	SUMMARY OF QUANTITIES
6-10	EXISTING AND PROPOSED TYPICAL CROSS SECTIONS
11-14	SCHEDULE OF QUANTITIES
15-22	PLAN SHEETS
23-25	DETOUR SIGNING
26-32	DISTRICT DETAILS

HIGHWAY STANDARDS

STANDARD NO.	DESCRIPTION
000001-07	Standard Symbols, Abbreviations and Patterns
001006	Decimal of an Inch and of a Foot
701101-05	Off-Road Operations, Multilane, 15' (4.5 m) to 24" (600 mm) From Pavement Edge
701301-04	Lane Closure, 2L, 2W, Short Time Operations
701306-04	Lane Closure, 2L, 2W, Slow Moving Operations Day Only, for Speeds ≥ 45 MPH
701427-05	Lane Closure, Multilane, Intermittent or Moving Operation, for Speeds ≤ 40 MPH
701428-01	Traffic Control, Setup and Removal, Freeway/Expressway
701451-05	Ramp Closure Freeway/Expressway
701501-06	Urban Lane Closure, 2L, 2W, Undivided
701901-08	Traffic Control Devices
780001-05	Typical Pavement Markings
781001-04	Typical Applications Raised Reflective Pavement Markers

COMMITMENTS

THERE ARE NO COMMITMENTS FOR THIS CONTRACT

GENERAL NOTES

G.N.-100A
ELECTRONIC FILES AND/OR ELECTRONIC SURVEY INFORMATION INCLUDING CADD FILES WILL NOT BE AVAILABLE TO THE CONTRACTOR.

G.N.-105.09A
ALL ELEVATIONS SHOWN IN THE PLANS ARE BASED ON NORTH AMERICAN VERTICAL DATUM OF 1988. (NAVD 88)

G.N.- 406H MIXTURE REQUIREMENTS

LOCATION	FAI 57 AT FAI 74 RAMPS, FAI 74 AT FAS 331 RAMPS & FAS 331
MIXTURE USE	POLYMER SURFACE
AC/PG	SBS PG 76-22
DESIGN AIR VOIDS	4.0% @ NDES=80
MIX COMP (GRADATION)	SMA 12.5
FRICTION AGGREGATE	MIX E
MIXTURE WEIGHT	112
QUALITY MANAGEMENT PROGRAM	QC/QA
SUBLOT SIZE	N.A.

G.N.-440M
THE HMA BEING MILLED WITHIN THE I-57 AT I-74 INTERCHANGE RAMPS CONTAIN A HIGH FRICTION SURFACE TREATMENT CONSISTING OF EPOXY BINDER AND CALCINED BAUXITE SAND PARTICLES WITH AN APPROXIMATE THICKNESS OF 1/4" - 3/8". THIS MATERIAL SHALL NOT BE USED AS RAP/FRAP IN FUTURE HMA WORK. THIS MATERIAL WILL BE SUITABLE FOR USE AS AGGREGATE WEDGE SHOULDER, TYPE B. ON THIS OR FUTURE IDOT CONTRACTS.

G.N.- 667
THE RESIDENT ENGINEER SHALL CONTACT THE PROGRAM DEVELOPMENT CHIEF OF SURVEYS PRIOR TO THE PRE-CONSTRUCTION CONFERENCE FOR INSTRUCTION AS TO SETTING OF TEMPORARY OR PERMANENT TIES FOR CENTERLINE ALIGNMENT CONTROL SURVEY MARKERS (PC'S, PT'S, AND PI'S). PROJECT IMPLEMENTATION PERSONNEL WILL BE RESPONSIBLE FOR LAYOUT OF THESE MARKERS.

G.N.- 703A
SHORT TERM PAVEMENT MARKING SHALL BE APPLIED TO THE PAVEMENT AFTER ANY OF THE FOLLOWING: COLD MILLING AND/OR PLACING BITUMINOUS MATERIALS (TACK COAT), LEVELING BINDER (MACHINE METHOD), BINDER AND SURFACE COURSES. SHORT TERM PAVEMENT MARKING PLACED ON THE SURFACE SHALL COINCIDE WITH THE FINAL PAVEMENT STRIPING. SHORT TERM PAVEMENT MARKING PLACED PRIOR TO THE SURFACE SHALL COINCIDE WITH THE EXISTING PAVEMENT MARKINGS. USE 4 FEET PER 40 FEET (OR 10% PER STATION).

G.N.- 781
THE FINAL PAVEMENT MARKINGS SHALL BE IN PLACE PRIOR TO PLACING THE RAISED REFLECTIVE PAVEMENT MARKERS.

G.N.-1004.01
COURSE AGGREGATE GRADATION CA-10 MAY BE USED WHENEVER COURSE AGGREGATE CA-6 IS SPECIFIED IN THE STANDARD SPECIFICATIONS.

** F.A.I. 57, F.A.I. 74 & F.A.S. 331

MODEL: s:\MODEL\MHFE
FILE: MHFE.dwg
C:\Users\mgonzalez\Documents\DOT Office\Drawings\70E37\CADDData\CAD\Sheet\0570E37.rvt-GenNote.dgn

USER NAME = gonsnell	DESIGNED -	REVISED -
	DRAWN -	REVISED -
PLOT SCALE = 40.0000 ' / in.	CHECKED -	REVISED -
PLOT DATE = 10/18/2019	DATE -	REVISED -

STATE OF ILLINOIS
DEPARTMENT OF TRANSPORTATION

INDEX OF SHEETS, HIGHWAY STANDARDS
& GENERAL NOTES

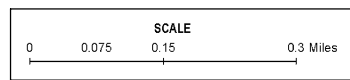
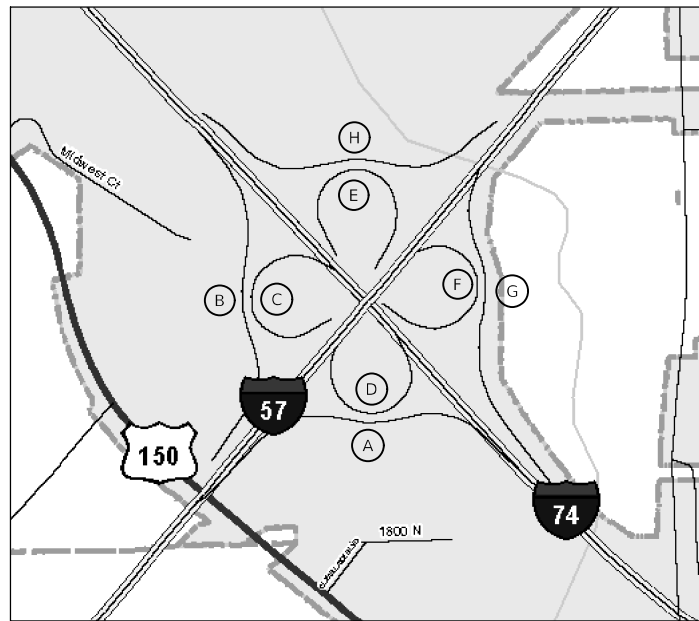
SCALE: SHEET 1 OF 1 SHEETS STA. TO STA.

F.A.** RTE.	SECTION	COUNTY	TOTAL SHEETS	SHEET NO.
VAR.	D5 CM INLAY 2020-2	*	32	2
			CONTRACT NO. 70E37	

ILLINOIS FED. AID PROJECT CHAMPAIGN & VERMILION

LOCATION MAP #1

F.A.I. 57 (I-57) RAMPS AT F.A.I. 74 (I-74) RAMPS



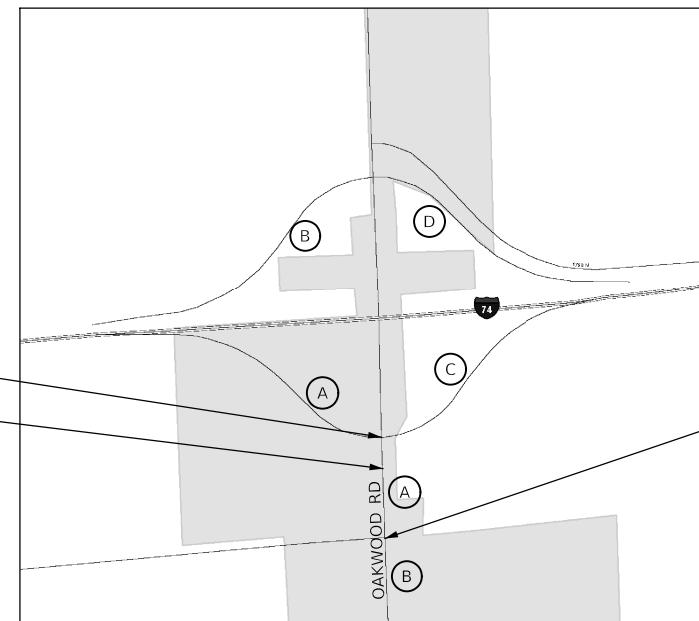
CURRENT ADT
F.A.I. 57 (I-57) & F.A.I. 74 (I-74) RAMPS

LEG "A" ADT (2019) = 7,100	SU = 8.5%	MU = 13.4%
LEG "B" ADT (2019) = 4,100	SU = 9.1%	MU = 23.2%
LEG "C" ADT (2019) = 2,250	SU = 7.8%	MU = 8.9%
LEG "D" ADT (2019) = 650	SU = 7.7%	MU = 12.3%
LEG "E" ADT (2019) = 6,900	SU = 6.5%	MU = 13.8%
LEG "F" ADT (2019) = 4,750	SU = 8.9%	MU = 21.0%
LEG "G" ADT (2019) = 1,900	SU = 6.6%	MU = 11.8%
LEG "H" ADT (2019) = 900	SU = 5.6%	MU = 10.0%

LEG "A" IS I-57 NB TO I-74 EB. I-57 RAMP I-AD.
 LEG "B" IS I-74 EB TO I-57 SB. I-74 RAMP I-CA.
 LEG "C" IS I-57 SB TO I-74 EB. I-57 RAMP I-BD.
 LEG "D" IS I-74 EB TO I-57 NB. I-74 RAMP I-CB.
 LEG "E" IS I-74 WB TO I-57 SB. I-74 RAMP I-DA.
 LEG "F" IS I-57 NB TO I-74 WB. I-57 RAMP I-AC.
 LEG "G" IS I-74 WB TO I-57 NB. I-74 RAMP I-DB.
 LEG "H" IS I-57 SB TO I-74 WB. I-57 RAMP I-BC.

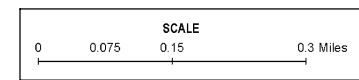
LOCATION MAP #2

F.A.I. 74 (I-74) AT THE OAKWOOD RAMPS; OAKWOOD RD (F.A.S. 331) S. OF I-74 INTERCHANGE



PROJECT BEGINS
STA. 57+93.59
 STATION EQUATION
STA. 60+03.00 (AH) = STA. 61+55.45

PROJECT ENDS
STA. 58+45.00



CURRENT ADT
F.A.I. 74 (I-74) & OAKWOOD RAMPS

LEG "A" ADT (2019) = 1,900	SU = 7.9%	MU = 31.6%
LEG "B" ADT (2019) = 1,850	SU = 13.5%	MU = 20.3%
LEG "C" ADT (2019) = 2,200	SU = 5.7%	MU = 27.3%
LEG "D" ADT (2019) = 2,050	SU = 9.8%	MU = 22.0%

LEG "A" IS I-74 EB TO F.A.S. 331. I-74 RAMP A.
 LEG "B" IS F.A.S. 331 TO I-74 WB. I-74 RAMP C.
 LEG "C" IS F.A.S. 331 TO I-74 EB. I-74 RAMP B.
 LEG "D" IS I-74 WB TO F.A.S. 331. I-74 RAMP D.

CURRENT ADT
F.A.S. 331 (OAKWOOD ROAD)

LEG "A" ADT (2019) = 8,000	SU = 13.1%	MU = 15.0%
LEG "B" ADT (2019) = 3,650	SU = 4.1%	MU = 3.4%

LEG "A" IS SOUTH OF I-74 INTERCHANGE TO 1760 N RD.
 LEG "B" 1760 N RD TO DOLBEE DR.

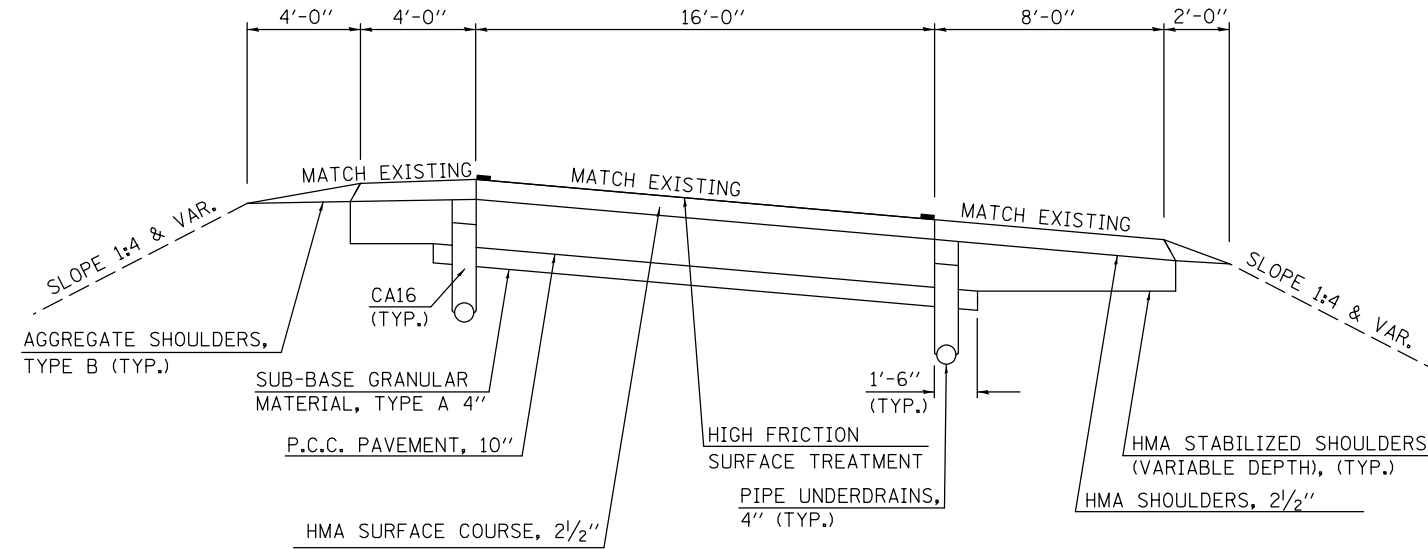
MODEL: \\MODELNAME
 FILE: \\NAME.Plot
 \\path\name\file\name\project\id\office\id\date\5\project\id\570E37\CADD\data\CAD\pkcs0570E37.rpt-locshb.mxd
 \\path\name\file\name\project\id\office\id\date\5\project\id\570E37\CADD\data\CAD\pkcs0570E37.rpt-locshb.mxd

USER NAME = gosnellc DESIGNED - DRAWN - PLOT SCALE = 40.0000 "/>	DESIGNED - DRAWN - CHECKED - DATE -	REVISED - REVISED - REVISED - REVISED -	STATE OF ILLINOIS DEPARTMENT OF TRANSPORTATION	LOCATION MAP SCALE: SHEET 1 OF 1 SHEETS STA. TO STA.	<table border="1" style="width: 100%; border-collapse: collapse;"> <tr> <td style="font-size: 8px;">F.A. ** RTE.</td> <td style="font-size: 8px;">SECTION</td> <td style="font-size: 8px;">COUNTY</td> <td style="font-size: 8px;">TOTAL SHEETS</td> <td style="font-size: 8px;">SHEET NO.</td> </tr> <tr> <td style="font-size: 8px;">VAR.</td> <td style="font-size: 8px;">D5 CM INLAY 2020-2</td> <td style="font-size: 8px;">-</td> <td style="font-size: 8px; text-align: center;">32</td> <td style="font-size: 8px; text-align: center;">3</td> </tr> <tr> <td colspan="5" style="font-size: 8px; text-align: center;">CONTRACT NO. 70E37</td> </tr> <tr> <td colspan="5" style="font-size: 8px; text-align: center;">ILLINOIS FED. AID PROJECT</td> </tr> </table>	F.A. ** RTE.	SECTION	COUNTY	TOTAL SHEETS	SHEET NO.	VAR.	D5 CM INLAY 2020-2	-	32	3	CONTRACT NO. 70E37					ILLINOIS FED. AID PROJECT				
F.A. ** RTE.	SECTION	COUNTY	TOTAL SHEETS	SHEET NO.																					
VAR.	D5 CM INLAY 2020-2	-	32	3																					
CONTRACT NO. 70E37																									
ILLINOIS FED. AID PROJECT																									

** F.A.I. 57, F.A.I. 74 & F.A.S. 331

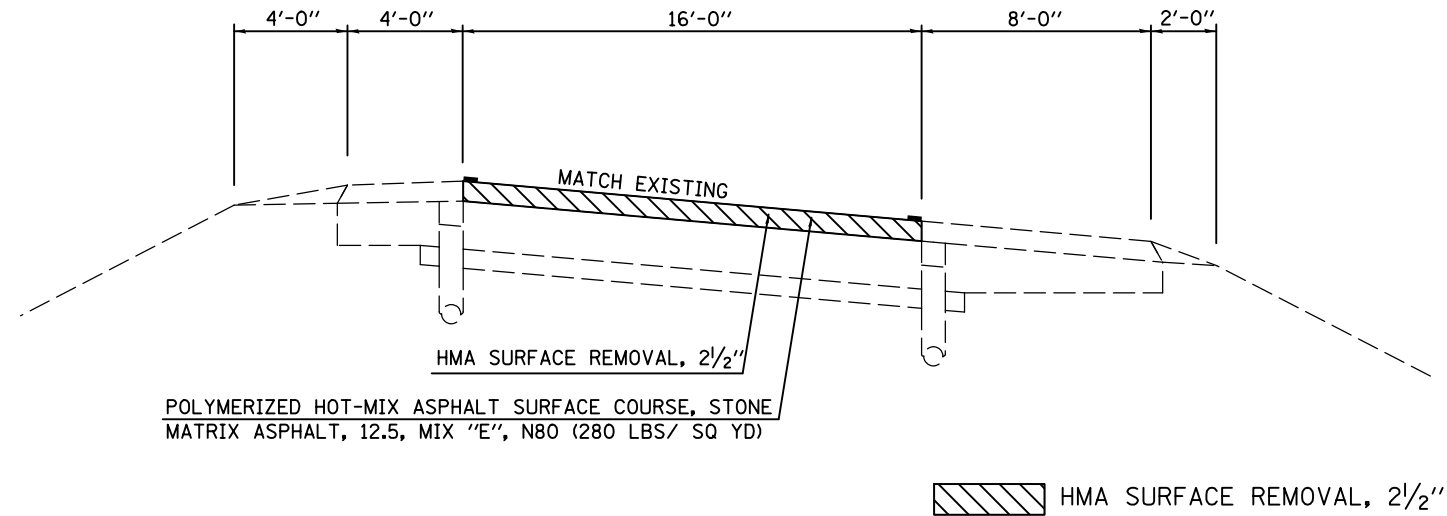
EXISTING TYPICAL CROSS SECTION

	STATION	TO	STATION
RAMP I-CA:	212+89.00		215+51.00
RAMP I-CA:	217+05.00		217+25.00
RAMP I-CA:	217+87.00		218+97.00
RAMP I-CA:	221+15.00		221+32.00
RAMP I-DA:	23+33.00		24+66.00



PROPOSED TYPICAL CROSS SECTION

	STATION	TO	STATION
RAMP I-CA:	212+89.00		215+51.00
RAMP I-CA:	217+05.00		217+25.00
RAMP I-CA:	217+87.00		218+97.00
RAMP I-CA:	221+15.00		221+32.00
RAMP I-DA:	23+33.00		24+66.00



MODEL: \\MODEL\NAME: FILE: \\NAME: P:\pub\mcom\mdata\illinois\poc\p\w\DOT\Documents\DOT_Offices\Director_5\Projects\0570E37\CADDData\CAD\Sheet\0570E37-01c-Typical.dgn

USER NAME = gosnell	DESIGNED -	REVISED -
	DRAWN -	REVISED -
PLOT SCALE = 40.0000' / in.	CHECKED -	REVISED -
PLOT DATE = 10/18/2019	DATE -	REVISED -

STATE OF ILLINOIS
DEPARTMENT OF TRANSPORTATION

TYPICAL CROSS SECTIONS
I-57 & I-74 RAMPS

SCALE: SHEET 1 OF 5 SHEETS STA. TO STA.

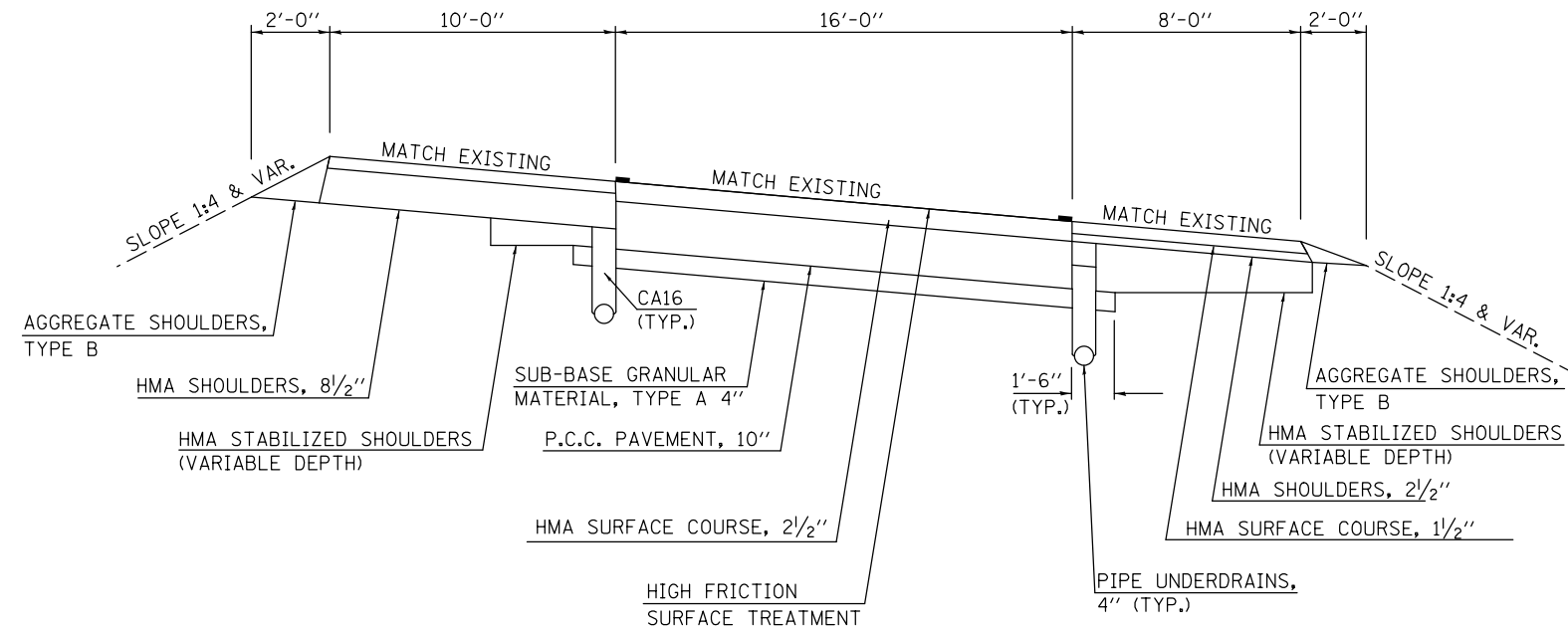
** F.A.I. 57, F.A.I. 74 & F.A.S. 331

F.A. ** RTE.	SECTION	COUNTY	TOTAL SHEETS	SHEET NO.
VAR.	D5 CM INLAY 2020-2	-	32	6
			CONTRACT NO. 70E37	

ILLINOIS FED. AID PROJECT CHAMPAIGN & VERMILION

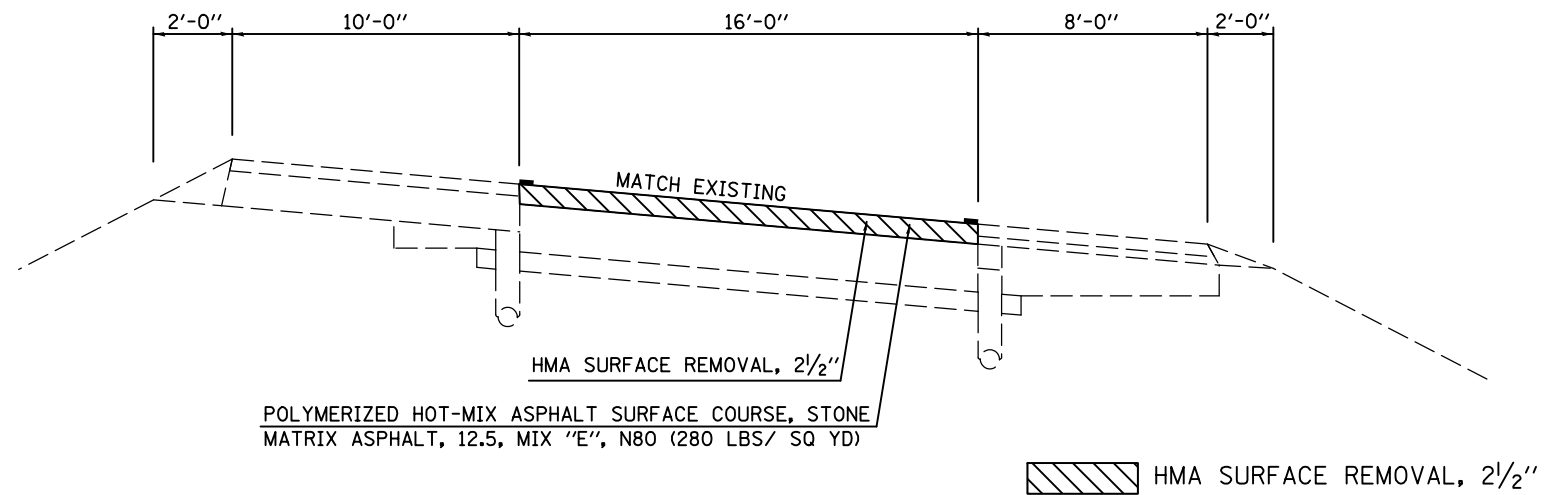
EXISTING TYPICAL CROSS SECTION

	STATION	TO	STATION
RAMP I-AD:	89+12.00		90+58.00
RAMP I-AD:	93+26.00		93+46.00
RAMP I-AD:	93+89.00		94+66.00
RAMP I-AD:	97+84.00		99+45.00
RAMP I-AD:	101+44.00		102+53.00



PROPOSED TYPICAL CROSS SECTION

	STATION	TO	STATION
RAMP I-AD:	89+12.00		90+58.00
RAMP I-AD:	93+26.00		93+46.00
RAMP I-AD:	93+89.00		94+66.00
RAMP I-AD:	97+84.00		99+45.00
RAMP I-AD:	101+44.00		102+53.00



MODEL: \\MODEL\NAME: FILE: \\NAME: P:\pub\hmm\com\ad\illinois\goc\pww\DOT\Documents\DOT_Offices\Illinet\3\Projects\0570E37\CADD\DATA\CAD\Sheet\0570E37.dwg

** F.A.I. 57, F.A.I. 74 & F.A.S. 331

USER NAME = gosnellcl	DESIGNED -	REVISED -
	DRAWN -	REVISED -
PLOT SCALE = 40.0000' / in.	CHECKED -	REVISED -
PLOT DATE = 10/18/2019	DATE -	REVISED -

**STATE OF ILLINOIS
DEPARTMENT OF TRANSPORTATION**

**TYPICAL CROSS SECTIONS
I-57 & I-74 RAMPS**

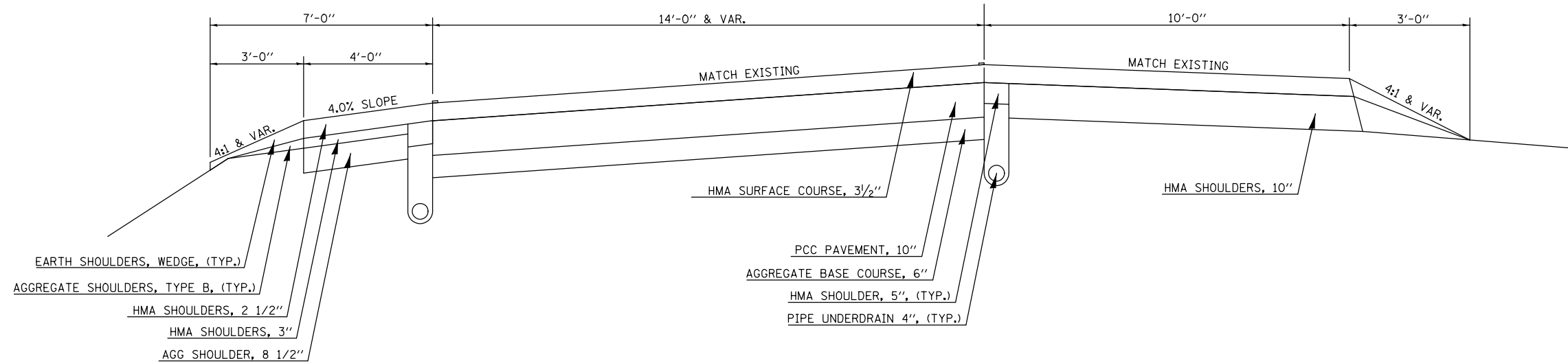
F.A. ** RTE.	SECTION	COUNTY	TOTAL SHEETS	SHEET NO.
VAR.	D5 CM INLAY 2020-2	-	32	7
			CONTRACT NO. 70E37	

SCALE: SHEET 2 OF 5 SHEETS STA. TO STA.

ILLINOIS FED. AID PROJECT CHAMPAIGN & VERMILION

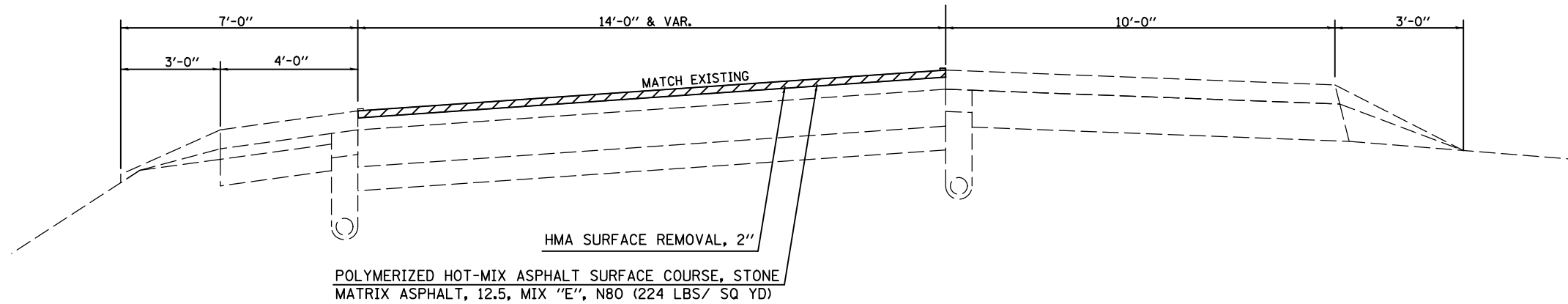
EXISTING TYPICAL CROSS SECTION

	STATION	TO	STATION
RAMP I-A:	103+08.00		104+84.00
RAMP I-D:	111+22.00		112+97.00
RAMP I-D:	114+81.00		116+91.00



PROPOSED TYPICAL CROSS SECTION

	STATION	TO	STATION
RAMP I-A:	103+08.00		104+84.00
RAMP I-D:	111+22.00		112+97.00
RAMP I-D:	114+81.00		116+91.00



 HMA SURFACE REMOVAL, 2"

MODEL: \\MODEL\MH\MS... FILE NAME: ...

** F.A.I. 57, F.A.I. 74 & F.A.S. 331

USER NAME = goshellcl	DESIGNED -	REVISED -
	DRAWN -	REVISED -
PLOT SCALE = 40.0000 ' / in.	CHECKED -	REVISED -
PLOT DATE = 10/18/2019	DATE -	REVISED -

STATE OF ILLINOIS
DEPARTMENT OF TRANSPORTATION

TYPICAL CROSS SECTIONS
I-74 & OAKWOOD RAMPS

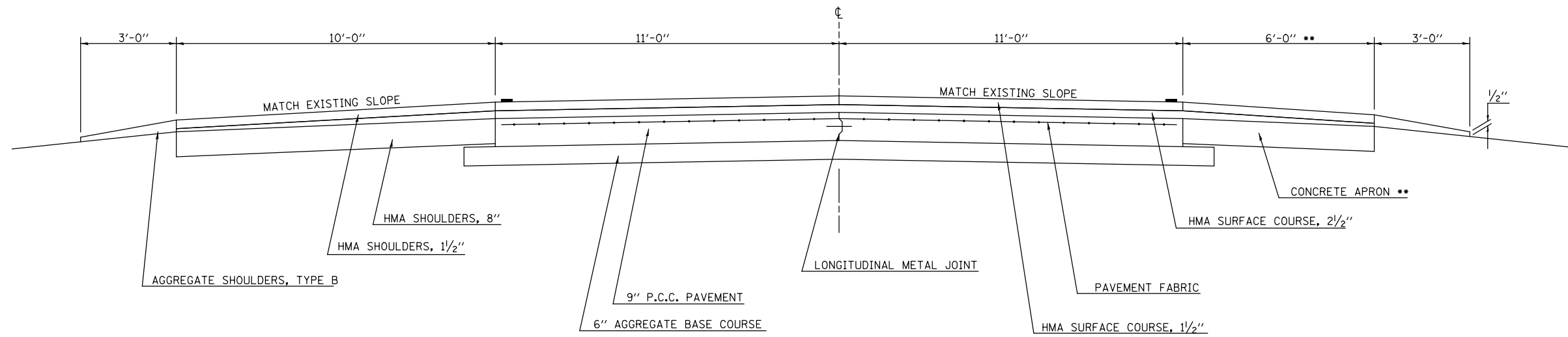
SCALE: SHEET 3 OF 5 SHEETS STA. TO STA.

F.A. ** RTE.	SECTION	COUNTY	TOTAL SHEETS	SHEET NO.
VAR.	D5 CM INLAY 2020-2	-	32	8
CONTRACT NO. 70E37				

ILLINOIS FED. AID PROJECT CHAMPAIGN & VERMILION

1 EXISTING TYPICAL CROSS SECTION

STATION 57+93.59 TO STATION 60+03.00 (AH) 2



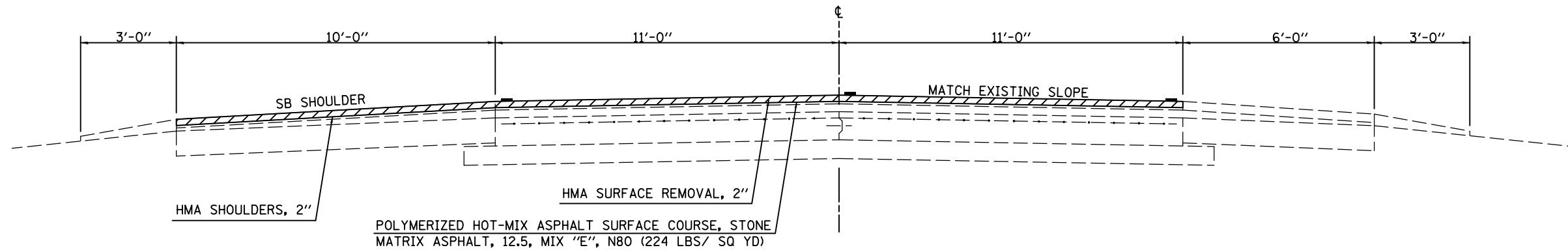
STATION EQUATION: 60+03 (AHEAD) = 61+55.45 (BACK)

** FROM STATION 80+85.0 RT. TO STATION 41+10.0 RT. 10' BITUMINOUS SHOULDER, 8" WITH BITUMINOUS OVERLAY IN PLACE OF 6'-0" CONCRETE APRON

1 PROPOSED TYPICAL CROSS SECTION

STATION 57+93.59 TO STATION 60+03.00 (AH) 2

STATION EQUATION: 60+03 (AH) = 61+55.45 (BK)



HMA SURFACE REMOVAL, 2"

MODEL: \\MODEL\MARTE
FILE: \\MARTE_Plan\Illinois\goc\PI\DOT\Documents\DOT_Offices\Illinois\Projects\70E37\CADD\Drawings\CAD\Sheet\70E37-CHC-Typical.dgn

USER NAME = gosnellcl	DESIGNED -	REVISED -
	DRAWN -	REVISED -
PLOT SCALE = 40,0000 ' / in.	CHECKED -	REVISED -
PLOT DATE = 10/18/2019	DATE -	REVISED -

STATE OF ILLINOIS
DEPARTMENT OF TRANSPORTATION

TYPICAL CROSS SECTIONS
FAS 331 (OAKWOOD ROAD)

SCALE: SHEET 4 OF 5 SHEETS STA. TO STA.

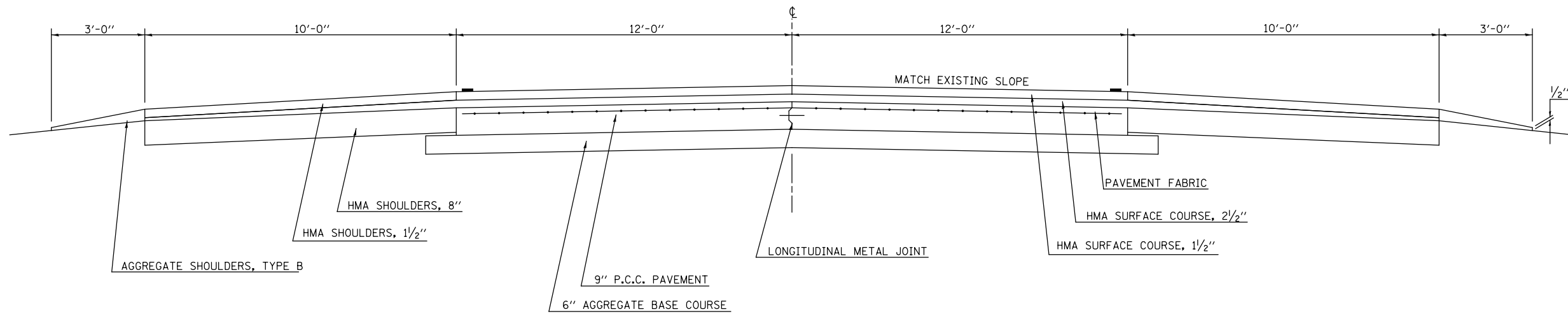
** F.A.I. 57, F.A.I. 74 & F.A.S. 331

F.A. ** RTE.	SECTION	COUNTY	TOTAL SHEETS	SHEET NO.
VAR.	D5 CM INLAY 2020-2	-	32	9
			CONTRACT NO. 70E37	

ILLINOIS FED. AID PROJECT CHAMPAIGN & VERMILION

2 EXISTING TYPICAL CROSS SECTION

STATION TO STATION
 ① (BK) 61+55.45 58+45.00

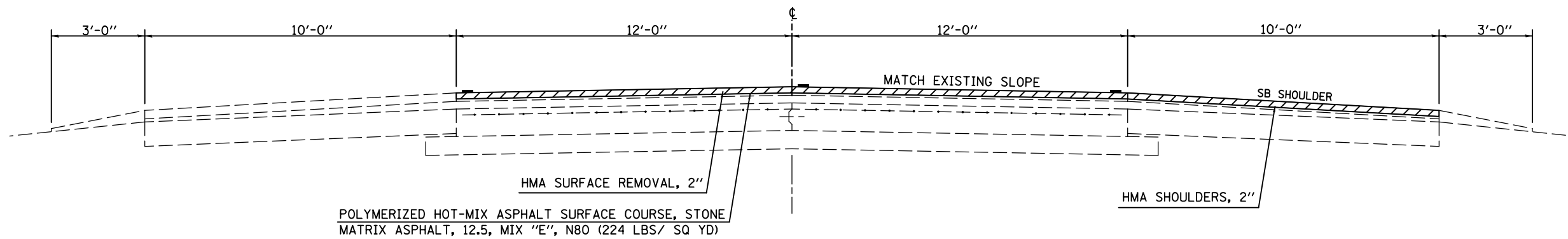


STATION EQUATION: 60+03 (AHEAD) = 61+55.45 (BACK)

2 PROPOSED TYPICAL CROSS SECTION

STATION EQUATION: 60+03 (AH) = 61+55.45 (BK)

STATION TO STATION
 ① (BK) 61+55.45 58+45.00



HMA SURFACE REMOVAL, 2"

SECTION CONTAINS COMBINATION CONCRETE CURB & GUTTER AT SPOT LOCATIONS FROM STA. 61+00.00 TO STA. 58+45.00

MODEL: \\MODEL\NAME: FILE: \\NAME: ...

USER NAME = gosnellcl	DESIGNED -	REVISED -
	DRAWN -	REVISED -
PLOT SCALE = 40.0000' / in.	CHECKED -	REVISED -
PLOT DATE = 10/18/2019	DATE -	REVISED -

**STATE OF ILLINOIS
DEPARTMENT OF TRANSPORTATION**

**TYPICAL CROSS SECTIONS
FAS 331 (OAKWOOD ROAD)**

SCALE: SHEET 5 OF 5 SHEETS STA. TO STA.

** F.A.I. 57, F.A.I. 74 & F.A.S. 331

F.A. ** RTE.	SECTION	COUNTY	TOTAL SHEETS	SHEET NO.
VAR.	D5 CM INLAY 2020-2	-	32	10
CONTRACT NO. 70E37				
ILLINOIS		FED. AID PROJECT		

CHAMPAIGN & VERMILION

SCHEDULE OF QUANTITIES

ROUTE	DIRECTION	RAMP	STATION	TO	STATION	AVG LENGTH EI	AVG WIDTH EI	AREA SQ YD	40605034		40600290	44000157	44000159	48203005
									POLYMERIZED HOT-MIX ASPHALT SURFACE COURSE, STONE MATRIX ASPHALT, 12.5, MIX "E", N80,		BITUMINOUS MATERIAL (TACK COAT)	HOT-MIX ASPHALT SURFACE REMOVAL, 2.0"	HOT-MIX ASPHALT SURFACE REMOVAL, 2.5"	HMA SHOULDERS, 2"
									2" ION	2 1/2" ION	POUND	SQ YD	SQ YD	SQ YD
I-57/ I-74	EB TO SB	I-CA	212+89.00		215+51.00	262.00	16.0	465.78	-	65.21	209.60	-	465.78	-
I-57/ I-74	EB TO SB	I-CA	217+05.00		217+25.00	20.00	16.0	35.56	-	4.98	16.00	-	35.56	-
I-57/ I-74	EB TO SB	I-CA	217+87.00		218+97.00	110.00	16.0	195.56	-	27.38	88.00	-	195.56	-
I-57/ I-74	EB TO SB	I-CA	221+15.00		221+32.00	17.00	16.0	30.22	-	4.23	13.60	-	30.22	-
I-57/ I-74	NB TO EB	I-AD	89+12.00		90+58.00	146.00	16.0	259.56	-	36.34	116.80	-	259.56	-
I-57/ I-74	NB TO EB	I-AD	93+26.00		93+46.00	20.00	16.0	35.56	-	4.98	16.00	-	35.56	-
I-57/ I-74	NB TO EB	I-AD	93+89.00		94+66.00	77.00	16.0	136.89	-	19.16	61.60	-	136.89	-
I-57/ I-74	NB TO EB	I-AD	97+84.00		99+45.00	161.00	16.0	286.22	-	40.07	128.80	-	286.22	-
I-57/ I-74	NB TO EB	I-AD	101+44.00		102+53.00	109.00	16.0	193.78	-	27.13	87.20	-	193.78	-
I-57/ I-74	WB TO SB	I-DA	23+33.00		24+66.00	133.00	16.0	236.44	-	33.10	106.40	-	236.44	-
OAKWOOD RD	NB DL		57+93.59		60+03.00	209.41	11.0	255.95	28.67	-	115.18	255.95	-	-
STATION EQUATION - STA. 60+03.00 (AH) = STA. 61+55.45 (BK)														
OAKWOOD RD	NB DL		61+55.45		58+45.00	310.45	11.0	379.44	42.50	-	170.75	379.44	-	-
OAKWOOD RD	SB DL		57+93.59		60+03.00	209.41	11.0	255.95	28.67	-	115.18	255.95	-	-
STATION EQUATION - STA. 60+03.00 (AH) = STA. 61+55.45 (BK)														
OAKWOOD RD	SB DL		61+55.45		58+45.00	310.45	11.0	379.44	42.50	-	170.75	379.44	-	-
OAKWOOD RD	SB SHLD		58+68.78		60+03.00	134.22	10.0	149.13	-	-	67.11	149.13	-	149.13
STATION EQUATION - STA. 60+03.00 (AH) = STA. 61+55.45 (BK)														
OAKWOOD RD	SB SHLD		61+55.45		58+45.00	310.45	10.0	344.94	-	-	155.23	344.94	-	344.94
I-74/ OAKWOOD	EB EXIT RAMP	A	103+08.00		104+84.00	176.00	14.0	273.78	30.66	-	123.20	273.78	-	-
I-74/ OAKWOOD	WB EXIT RAMP	D	111+22.00		112+97.00	175.00	14.0	272.22	30.49	-	122.50	272.22	-	-
I-74/ OAKWOOD	WB EXIT RAMP	D	114+81.00		116+91.00	210.00	14.0	326.67	36.59	-	147.00	326.67	-	-
SUBTOTAL =									240.06	262.58	2,030.88	2,637.51	1,875.56	494.08
PROJECT TOTAL =									503.00	2,031.00	2,638.00	1,876.00	495.00	

MODEL: \\MODEL\MRFS
FILE: \\MRFS_Plan\Illinois\goc\pww\DOT\Documents\DOT_Offices\Illinois\Projects\0570E37\CADDData\CAD\Sheet\0570E37-SHT-SCHEDULE.Sgm

USER NAME = gosnellc1	DESIGNED -	REVISED -
	DRAWN -	REVISED -
PLOT SCALE = 40.0000 ' / in.	CHECKED -	REVISED -
PLOT DATE = 10/18/2019	DATE -	REVISED -

**STATE OF ILLINOIS
DEPARTMENT OF TRANSPORTATION**

SCHEDULE OF QUANTITIES

SCALE: SHEET 1 OF 4 SHEETS STA. TO STA.

** F.A.I. 57, F.A.I. 74 & F.A.S. 331

F.A. ** RTE.	SECTION	COUNTY	TOTAL SHEETS	SHEET NO.
VAR.	D5 CM INLAY 2020-2	-	32	11
CONTRACT NO. 70E37				

ILLINOIS FED. AID PROJECT
CHAMPAIGN & VERMILION

SCHEDULE OF QUANTITIES

ROUTE	DIRECTION	RAMP	STATION	TO	STATION	AVG LENGTH FOOT	70300100			70300150			70300220			70300250	
							SHORT TERM PAVEMENT MARKING			SHORT TERM PAVEMENT MARKING REMOVAL			TEMPORARY PAVEMENT MARKING - LINE 4"			TEMPORARY PAVEMENT MARKING - LINE 8"	
							FOOT			SQ FT			FOOT			FOOT	
							SOLID YELLOW LEFT EDGE	SOLID WHITE RIGHT EDGE	SKIP-DASH YELLOW CENTERLINE	SOLID YELLOW LEFT EDGE	SOLID WHITE RIGHT EDGE	SKIP-DASH YELLOW CENTERLINE	SOLID YELLOW LEFT EDGE	SOLID WHITE RIGHT EDGE	SKIP-DASH YELLOW CENTERLINE	SOLID WHITE LEFT EDGE	SOLID WHITE RIGHT EDGE
I-57/ I-74	EB TO SB	I-CA	212+89.00		215+51.00	262.00	10.48	10.48	-	3.46	3.46	-	262.00	262.00	-	-	-
I-57/ I-74	EB TO SB	I-CA	217+05.00		217+25.00	20.00	0.80	0.80	-	0.26	0.26	-	20.00	20.00	-	-	-
I-57/ I-74	EB TO SB	I-CA	217+87.00		218+97.00	110.00	4.40	4.40	-	1.45	1.45	-	110.00	110.00	-	-	-
I-57/ I-74	EB TO SB	I-CA	221+15.00		221+32.00	17.00	0.68	0.68	-	0.22	0.22	-	17.00	17.00	-	-	-
I-57/ I-74	NB TO EB	I-AD	89+12.00		90+58.00	146.00	5.84	5.84	-	1.93	1.93	-	146.00	146.00	-	-	-
I-57/ I-74	NB TO EB	I-AD	93+26.00		93+46.00	20.00	0.80	0.80	-	0.26	0.26	-	20.00	20.00	-	-	-
I-57/ I-74	NB TO EB	I-AD	93+89.00		94+66.00	77.00	3.08	3.08	-	1.02	1.02	-	77.00	77.00	-	-	-
I-57/ I-74	NB TO EB	I-AD	97+84.00		99+45.00	161.00	6.44	6.44	-	2.13	2.13	-	161.00	161.00	-	-	-
I-57/ I-74	NB TO EB	I-AD	101+44.00		102+53.00	109.00	4.36	4.36	-	1.44	1.44	-	-	-	-	109.00	109.00
I-57/ I-74	WB TO SB	I-DA	23+33.00		24+66.00	133.00	5.32	5.32	-	1.76	1.76	-	133.00	133.00	-	-	-
OAKWOOD RD	NB DL		57+93.59		60+03.00	209.41	-	16.75	41.88	-	5.53	5.53	-	209.41	60.00	-	-
STATION EQUATION - STA. 60+03.00 (AH) = STA. 61+55.45 (BK)																	
OAKWOOD RD	NB DL		61+55.45		58+45.00	310.45	-	24.84	62.09	-	8.20	8.20	-	310.45	80.00	-	-
OAKWOOD RD	SB DL		57+93.59		60+03.00	209.41	-	16.75	-	-	5.53	-	-	209.41	-	-	-
STATION EQUATION - STA. 60+03.00 (AH) = STA. 61+55.45 (BK)																	
OAKWOOD RD	SB DL		61+55.45		58+45.00	310.45	-	24.84	-	-	8.20	-	-	310.45	-	-	-
I-74/ OAKWOOD	EB EXIT RAMP	A	103+08.00		104+84.00	176.00	7.04	7.04	-	2.32	2.32	-	176.00	176.00	-	-	-
I-74/ OAKWOOD	WB EXIT RAMP	D	111+22.00		112+97.00	175.00	7.00	7.00	-	2.31	2.31	-	175.00	175.00	-	-	-
I-74/ OAKWOOD	WB EXIT RAMP	D	114+81.00		116+91.00	210.00	8.40	8.40	-	2.77	2.77	-	210.00	210.00	-	-	-
SUBTOTAL =							64.64	147.82	103.97	21.33	48.78	13.72	1,507.00	2,546.72	140.00	109.00	109.00
PROJECT TOTAL =								317.00			84.00		4,194.00		218.00		

MODEL: \\MODEL\MHFS
FILE: \\MAILS_PUB\pub\mcomad\illinois.gov\PWIDOT\Documents\DOT_Offices\Illinet\Projects\0570E37\CADDData\CAD\References\0570E37_SHT-SCHEDULE.esgn

USER NAME = gosnellc1	DESIGNED -	REVISED -
	DRAWN -	REVISED -
PLOT SCALE = 40.0000 ' / in.	CHECKED -	REVISED -
PLOT DATE = 10/18/2019	DATE -	REVISED -

**STATE OF ILLINOIS
DEPARTMENT OF TRANSPORTATION**

SCHEDULE OF QUANTITIES

SCALE: SHEET 2 OF 4 SHEETS STA. TO STA.

** F.A.I. 57, F.A.I. 74 & F.A.S. 331

F.A. ** RTE.	SECTION	COUNTY	TOTAL SHEETS	SHEET NO.
VAR.	D5 CM INLAY 2020-2	-	32	12
CONTRACT NO. 70E37				

ILLINOIS FED. AID PROJECT
CHAMPAIGN & VERMILION

SCHEDULE OF QUANTITIES

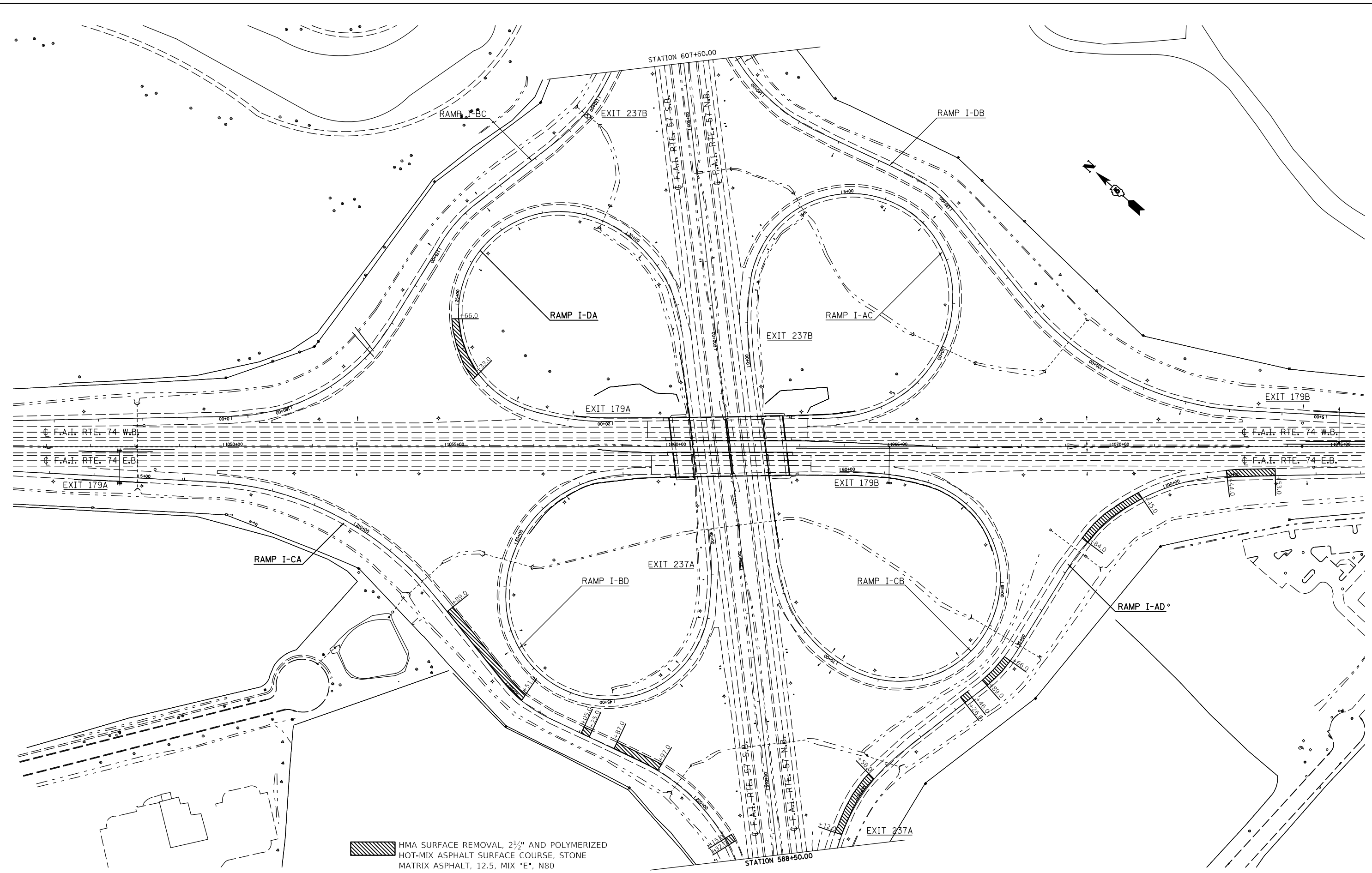
ROUTE	DIRECTION	RAMP	STATION	TO	STATION	AVG LENGTH FOOT	78100100		78300200	
							RAISED REFLECTIVE PAVEMENT MARKER		RAISED REFLECTIVE PAVEMENT MARKER REMOVAL	
							EACH		EACH	
							AMBER	CRYSTAL	AMBER	CRYSTAL
I-57/ I-74	NB TO EB	I-AD	89+12.00		90+58.00	146.00	4.00	-	4.00	-
I-57/ I-74	WB TO SB	I-DA	23+33.00		24+66.00	133.00	4.00	-	4.00	-
OAKWOOD RD	CENTERLINE		57+93.59		60+03.00	209.41	-	6.00	-	6.00
STATION EQUATION - STA. 60+03.00 (AH) = STA. 61+55.45 (BK)										
OAKWOOD RD	CENTERLINE		61+55.45		58+45.00	310.45	-	8.00	-	8.00
I-74/ OAKWOOD	WB EXIT RAMP	D	111+22.00		112+97.00	175.00	5.00	-	5.00	-
I-74/ OAKWOOD	WB EXIT RAMP	D	114+81.00		116+91.00	210.00	6.00	-	6.00	-
SUBTOTAL =							19.00	14.00	19.00	14.00
PROJECT TOTAL =							33.00		33.00	

*RATES FOR RRPMS ARE 2 PER 80' ON THROUGH LANES AND 1 PER 40' ON TURN LANES / EXIT RAMP

MODEL: \\MODEL\MHFS
FILE: \\mhfs\p\191818\00\ma\dat\illinois\gov\PIV\DOT\Documents\DOT_Offices\Dir\ct 5\Projects\0570E37\CADD\data\CAD\papers\0570E37_SHT-SCHEDULES.dgn

	USER NAME = gosnellc1	DESIGNED -	REVISED -	STATE OF ILLINOIS DEPARTMENT OF TRANSPORTATION	SCHEDULE OF QUANTITIES		F.A. ** RTE.	SECTION	COUNTY	TOTAL SHEETS	SHEET NO.	
	PLOT SCALE = 40.0000 ' / in.	CHECKED -	REVISED -									
	PLOT DATE = 10/18/2019	DATE -	REVISED -									
						SCALE:	SHEET 4	OF 4	SHEETS	STA.	TO STA.	
						** F.A.I. 57, F.A.I. 74 & F.A.S. 331 ILLINOIS FED. AID PROJECT CHAMPAIGN & VERMILION CONTRACT NO. 70E37						

MODEL: I:\MODEL\NAME
 FILE: NAME.dwg
 PROJECT: I:\PROJECTS\70E37\CADD\DATA\CAD\PROJECTS\70E37\SVT-PLAN-157.dgn



** F.A.I. 57, F.A.I. 74 & F.A.S. 331

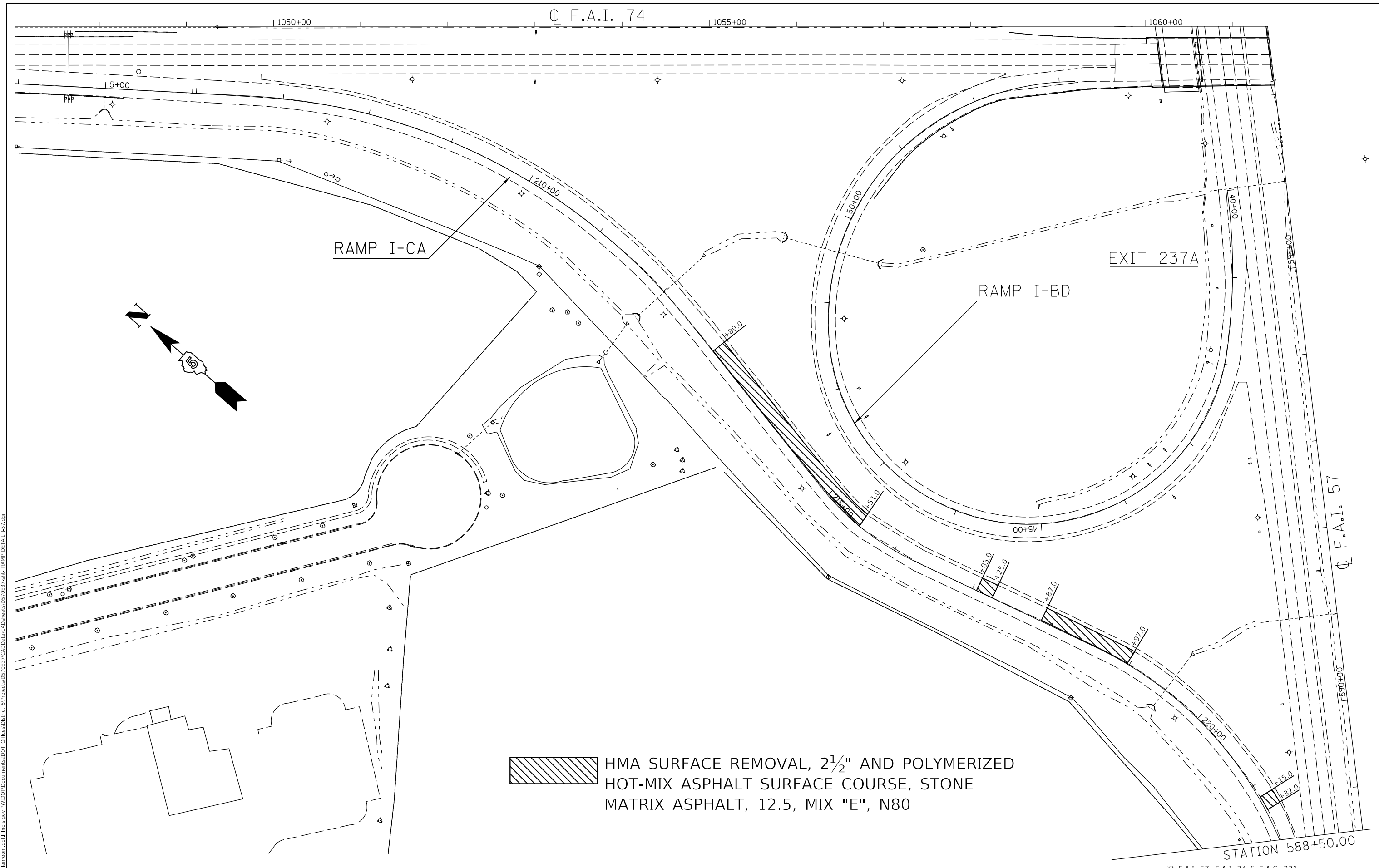
USER NAME = goslackl	DESIGNED -	REVISED -
	DRAWN -	REVISED -
PLOT SCALE = 200.0000' / in.	CHECKED -	REVISED -
PLOT DATE = 10/18/2019	DATE -	REVISED -


**STATE OF ILLINOIS
 DEPARTMENT OF TRANSPORTATION**

I-57 & I-74 RAMP OVERVIEW

SCALE: 1"=100' SHEET 1 OF 8 SHEETS STA. TO STA.

F.A. RTE.	SECTION	COUNTY	TOTAL SHEETS	SHEET NO.
VAR.	D5 CM INLAY 2020-2	-	32	15
CONTRACT NO. 70E37				



 HMA SURFACE REMOVAL, 2 1/2" AND POLYMERIZED HOT-MIX ASPHALT SURFACE COURSE, STONE MATRIX ASPHALT, 12.5, MIX "E", N80

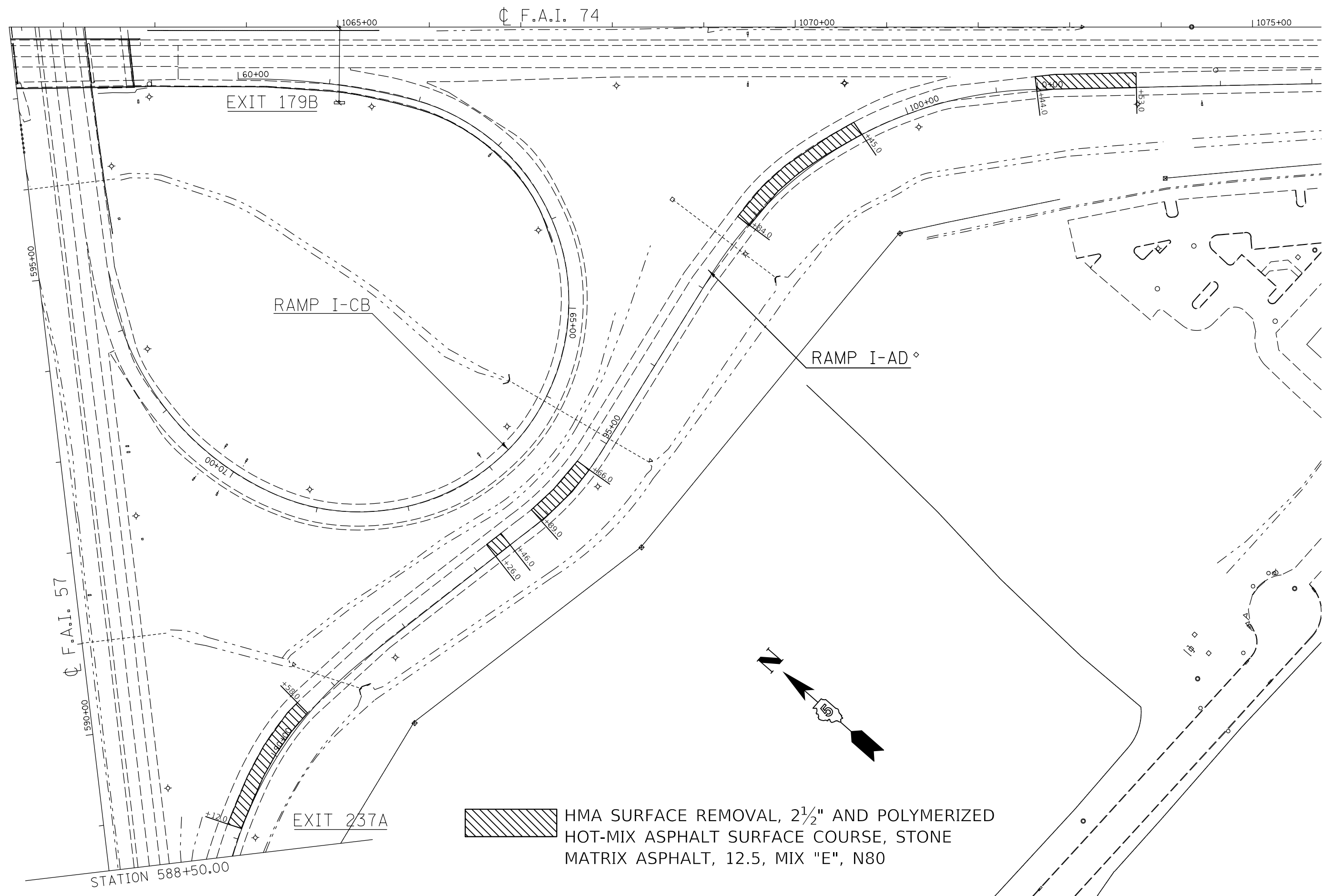
MODEL: \\MODELNAME
 FILE: \\NAME: \\SUBDIR\GOMAS\DATA\ILLINOIS\GOM\PROJECTS\DOT\OFFICE\DIR\DET 5\PROJECTS\0570E37\CADD\DATA\CAD\PROJECTS\0570E37-01- RAMP DETAIL 1-57.dgn


USER NAME = gosnellc1	DESIGNED -	REVISED -
	DRAWN -	REVISED -
PLOT SCALE = 100.0000' / in.	CHECKED -	REVISED -
PLOT DATE = 10/18/2019	DATE -	REVISED -

**STATE OF ILLINOIS
DEPARTMENT OF TRANSPORTATION**

PLAN SHEET			
I-57 & I-74 RAMP I-CA			
SCALE:	SHEET 2	OF 8	SHEETS
	STA.		TO STA.

** F.A.I. 57, F.A.I. 74 & F.A.S. 331			
F.A. RTE.	SECTION	COUNTY	TOTAL SHEETS
VAR.	D5 CM INLAY 2020-2		32
			SHEET NO. 16
CONTRACT NO. 70E37			
ILLINOIS FED. AID PROJECT			
CHAMPAIGN & VERMILION			



 HMA SURFACE REMOVAL, 2 1/2" AND POLYMERIZED HOT-MIX ASPHALT SURFACE COURSE, STONE MATRIX ASPHALT, 12.5, MIX "E", N80

MODEL: \\MODEL\NAME
 FILE: NAME: P:\pub\mcom\da\illinois\dot\Documents\DOT\Office\Detail\5\Projects\0570E37\CADD\DATA\CAD\PROJECTS\0570E37-411-BA-RAMP DETAIL_157.dgn

USER NAME = gosnellc	DESIGNED -	REVISED -
	DRAWN -	REVISED -
PLOT SCALE = 100.0000' / in.	CHECKED -	REVISED -
PLOT DATE = 10/18/2019	DATE -	REVISED -

**STATE OF ILLINOIS
DEPARTMENT OF TRANSPORTATION**

PLAN SHEET			
I-57 & I-74 RAMP I-AD			
SCALE:	SHEET 3	OF 8 SHEETS	STA. TO STA.

** F.A.I. 57, F.A.I. 74 & F.A.S. 331			
F.A. RTE.	SECTION	COUNTY	TOTAL SHEETS
VAR.	D5 CM INLAY 2020-2	-	32
			SHEET NO. 17
CONTRACT NO. 70E37			
ILLINOIS FED. AID PROJECT			
CHAMPAIGN & VERMILION			



Exst. Curve CH10FR-1
 PI Sta. 6+78.29
 $\Delta = 27^\circ 49' 18''$ (RT)
 D = $19^\circ 02' 54''$
 T = 74.50'
 R = 300.79'
 L = 146.06'
 E = 9.09'
 PC Sta. 6+03.79
 PT Sta. 7+49.85

Exst. Curve CH10RC-1
 PI Sta. 98+61.98
 $\Delta = 48^\circ 52' 48''$ (LT)
 D = $6^\circ 00' 00''$
 T = 433.98'
 R = 954.93'
 L = 814.67'
 E = 93.99'
 PC Sta. 94+28.00
 PT Sta. 102+42.67

Exst. Curve CH10RC-2
 PI Sta. 106+68.53
 $\Delta = 37^\circ 21' 47''$ (RT)
 D = $10^\circ 25' 03''$
 T = 185.97'
 R = 550.00'
 L = 358.66'
 E = 30.59'
 PC Sta. 104+82.56
 PT Sta. 108+41.22

Exst. Curve CH10RD-1
 PI Sta. 108+09.78
 $\Delta = 32^\circ 49' 20''$ (RT)
 D = $10^\circ 25' 03''$
 T = 161.99'
 R = 550.00'
 L = 315.07'
 E = 23.36'
 PC Sta. 106+47.79
 PT Sta. 109+62.86

Exst. Curve CH10FR-2
 PI Sta. 16+82.89
 $\Delta = 50^\circ 28' 19''$ (LT)
 D = $6^\circ 00' 00''$
 T = 450.09'
 R = 954.93'
 L = 841.20'
 E = 100.75'
 PC Sta. 12+32.80
 PT Sta. 20+74.00

Exst. Curve CH10RD-2
 PI Sta. 115+67.87
 $\Delta = 44^\circ 27' 10''$ (LT)
 D = $6^\circ 00' 00''$
 T = 390.21'
 R = 954.93'
 L = 740.88'
 E = 76.65'
 PC Sta. 111+77.66
 PT Sta. 119+18.53

Exst. Curve CH10RD-3
 PI Sta. 121+47.13
 $\Delta = 5^\circ 22' 01''$ (LT)
 D = $1^\circ 10' 29''$
 T = 228.60'
 R = 4,877.27'
 L = 456.87'
 E = 5.35'
 PC Sta. 119+18.53
 PT Sta. 123+75.40

Exst. Curve CH10RA-2
 PI Sta. 98+80.21
 $\Delta = 44^\circ 27' 08''$ (RT)
 D = $6^\circ 00' 00''$
 T = 390.21'
 R = 954.93'
 L = 740.87'
 E = 76.65'
 PC Sta. 94+90.00
 PT Sta. 102+30.87

Exst. Curve CH10RB-2
 PI Sta. 116+09.29
 $\Delta = 48^\circ 52' 49''$ (RT)
 D = $6^\circ 00' 00''$
 T = 433.98'
 R = 954.93'
 L = 814.67'
 E = 93.99'
 PC Sta. 111+75.31
 PT Sta. 119+89.98

Exst. Curve CH10RA-3
 PI Sta. 106+07.14
 $\Delta = 32^\circ 49' 21''$ (LT)
 D = $10^\circ 25' 03''$
 T = 161.99'
 R = 550.00'
 L = 315.07'
 E = 23.36'
 PC Sta. 104+45.15
 PT Sta. 107+60.23

Exst. Curve CH10RB-1
 PI Sta. 107+62.73
 $\Delta = 37^\circ 21' 48''$ (LT)
 D = $10^\circ 25' 03''$
 T = 185.97'
 R = 550.00'
 L = 358.66'
 E = 30.59'
 PC Sta. 105+76.76
 PT Sta. 109+35.43

- HMA SURFACE REMOVAL, 2" AND HMA SHOULDERS, 2"
- HMA SURFACE REMOVAL, 2" AND POLYMERIZED HOT-MIX ASPHALT SURFACE COURSE, STONE MATRIX ASPHALT, 12.5, MIX "E", N80

PROJECT BEGINS (FAS 331)
 STA. 58+68.78
 STA. 57+93.89
 MATCH LINE STATION 59+00

MODEL: s:\MODEL\MARTE
 FILE: MARTE.dwg
 PLOT DATE: 10/18/2019

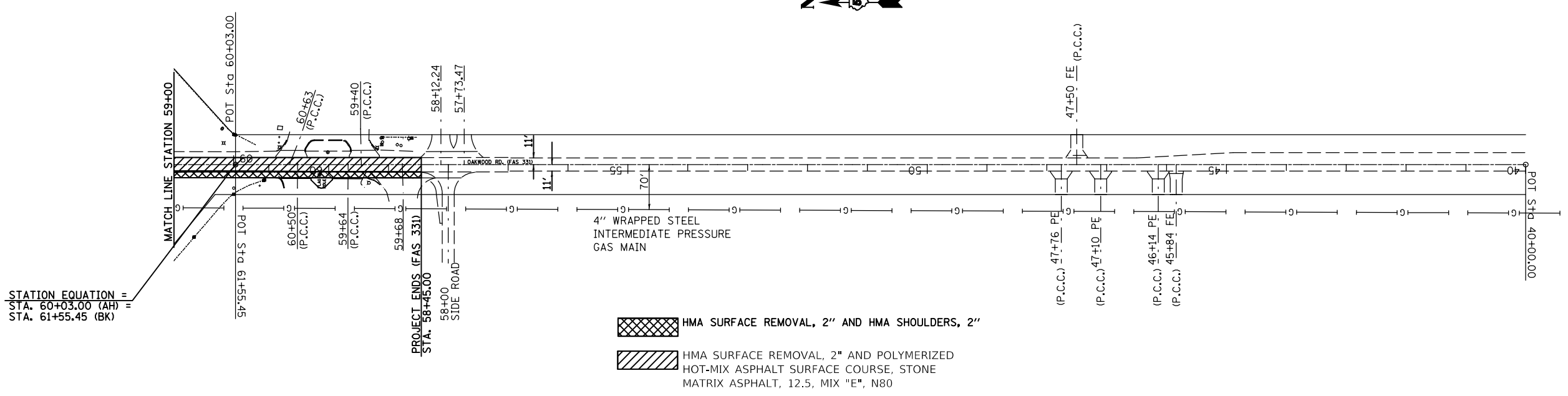
USER NAME = gosnellc1	DESIGNED -	REVISED -
	DRAWN -	REVISED -
PLOT SCALE = 200.0000' / in.	CHECKED -	REVISED -
PLOT DATE = 10/18/2019	DATE -	REVISED -

**STATE OF ILLINOIS
 DEPARTMENT OF TRANSPORTATION**

**I-74 & OAKWOOD RAMPS
 OAKWOOD ROAD**

SCALE: 1"=100' SHEET 5 OF 8 SHEETS STA. TO STA.

**F.A.I. 57, F.A.I. 74 & F.A.S. 331			
F.A. RTE.	SECTION	COUNTY	TOTAL SHEETS
VAR.	D5 CM INLAY 2020-2		32
			19
CONTRACT NO. 70E37			
ILLINOIS		FED. AID PROJECT	



- HMA SURFACE REMOVAL, 2" AND HMA SHOULDERS, 2"
- HMA SURFACE REMOVAL, 2" AND POLYMERIZED HOT-MIX ASPHALT SURFACE COURSE, STONE MATRIX ASPHALT, 12.5, MIX "E", N80

MODEL: \\MODEL\NAME
 FILE: NAME: P:\pub\mcom\mdata\illinois\gov\PI\DOT\Documents\DOT_Offices\District 5\Projects\0570E37\CADDData\CAD\Sheet\0570E37-SubPlan_174.dgn

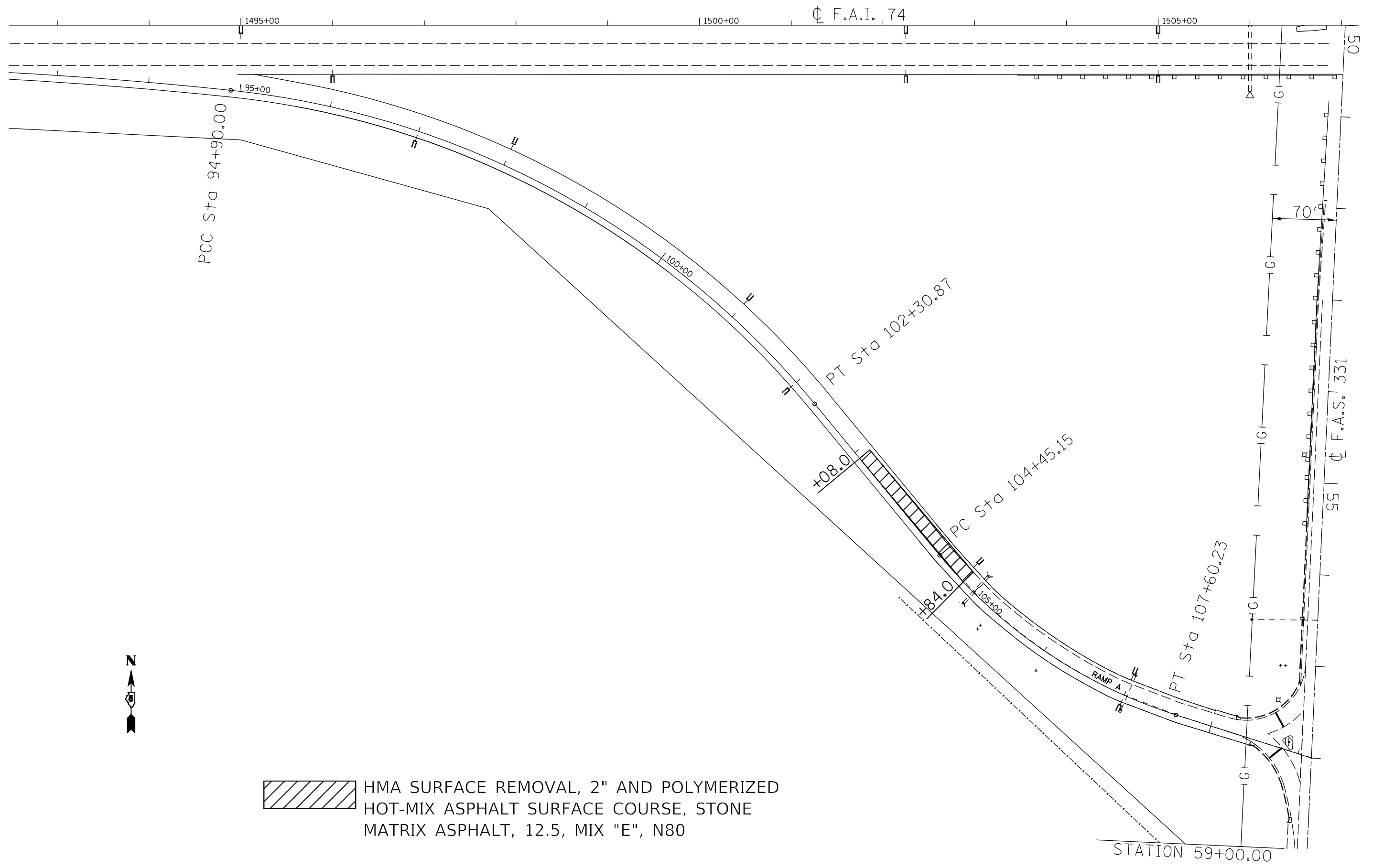
USER NAME = gosnellc1	DESIGNED -	REVISED -
	DRAWN -	REVISED -
PLOT SCALE = 200.0000 ' / in.	CHECKED -	REVISED -
PLOT DATE = 10/18/2019	DATE -	REVISED -


STATE OF ILLINOIS
DEPARTMENT OF TRANSPORTATION

OAKWOOD ROAD			
SCALE: 1"=100'	SHEET 6	OF 8 SHEETS	STA. TO STA.

**F.A.I. 57, F.A.I. 74 & F.A.S. 331			
F.A. ** RTE.	SECTION	COUNTY	TOTAL SHEETS
VAR.	D5 CM INLAY 2020-2	-	32
			SHEET NO. 20
CONTRACT NO. 70E37			
		ILLINOIS	FED. AID PROJECT
CHAMPAIGN & VERMILION			

MODEL: \\MODELNAME
 FILE NAME: P:\pub\mcomas\data\illinois\pww\DOT\Documents\DOT Office\Detail\I-74\CADDData\CAD\Project\070E37-CH-RAMP DETAIL.dgn



 HMA SURFACE REMOVAL, 2" AND POLYMERIZED HOT-MIX ASPHALT SURFACE COURSE, STONE MATRIX ASPHALT, 12.5, MIX "E", N80

** F.A.I. 57, F.A.I. 74 & F.A.S. 331

USER NAME = gosnellcl	DESIGNED -	REVISED -
	DRAWN -	REVISED -
PLOT SCALE = 100,0000' / in.	CHECKED -	REVISED -
PLOT DATE = 10/18/2019	DATE -	REVISED -

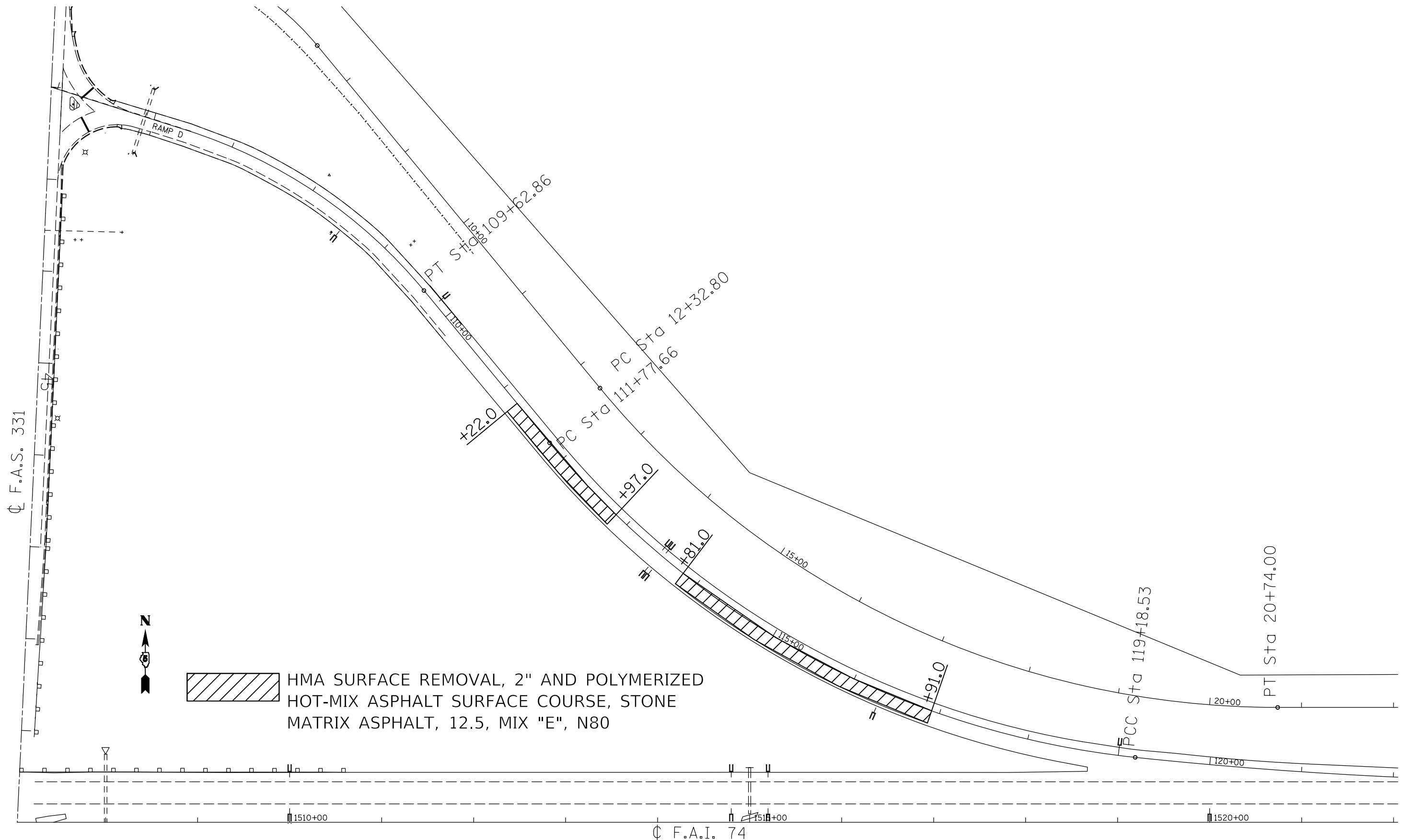
**STATE OF ILLINOIS
 DEPARTMENT OF TRANSPORTATION**

**RAMP DETAIL
 I-74 & OAKWOOD RAMP A**

SCALE: SHEET 7 OF 8 SHEETS STA. TO STA.

F.A. RTE.	SECTION	COUNTY	TOTAL SHEETS	SHEET NO.
VAR.	D5 CM INLAY 2020-2	-	32	21
				CONTRACT NO. 70E37

MODEL: \\MODELNAME
 FILE: \\NAME.Plot
 I:\projects\70E37\CADD\DATA\CAD\PROJECTS\70E37-CH-RAMP DETAIL.dgn



 HMA SURFACE REMOVAL, 2" AND POLYMERIZED
 HOT-MIX ASPHALT SURFACE COURSE, STONE
 MATRIX ASPHALT, 12.5, MIX "E", N80

** F.A.I. 57, F.A.I. 74 & F.A.S. 331

USER NAME = gosnellc1	DESIGNED -	REVISED -
	DRAWN -	REVISED -
PLOT SCALE = 100.0000' / in.	CHECKED -	REVISED -
PLOT DATE = 10/18/2019	DATE -	REVISED -

**STATE OF ILLINOIS
 DEPARTMENT OF TRANSPORTATION**

**RAMP DETAIL
 I-74 & OAKWOOD RAMP D**

SCALE: SHEET 8 OF 8 SHEETS STA. TO STA.

F.A. ** RTE.	SECTION	COUNTY	TOTAL SHEETS	SHEET NO.
VAR.	D5 CM INLAY 2020-2	-	32	22
			CONTRACT NO. 70E37	

ILLINOIS FED. AID PROJECT
 CHAMPAIGN & VERMILION

DETOUR SIGNING FOR RAMP I-CA

LEGEND

(A)

DETOUR SOUTH INTERSTATE 57
 M4-8 (24x12) (0)
 M3-4 (24x12) WHITE ON BLUE
 M1-1 (24x24) WHITE ON BLUE

ALL ARROW SIGNS (21x15) BLACK ON ORANGE

END DETOUR
 M4-8A (24x18) (0)

CHANGEABLE MESSAGE SIGN

(A)
 ERECT ±150' PAST EXIT RAMP

RAMP I-CA:
 EXIT 179A

EXIT 179B

END DETOUR
 ERECT UNDER GREENBOARD

EXIT 240

(A)
 ERECT BEHIND LT. SIDE DO NOT ENTER SIGN

(A)
 ERECT ±75' PRIOR TO EXIT RAMP

(A)
 ERECT ±400' PRIOR TO EXIT RAMP

(A)
 ERECT ±150' PAST EXIT RAMP



RAMP I-CA - EXIT 179A:
 TAKE I-74 EAST TO EXIT 179B AND GO NORTH ON I-57 TO EXIT 240, THEN COME BACK SOUTH ON I-57

MODEL: \\MODEL\NAME
 FILE: \\NAME: \\pub\m\com\ada\illinois.gov\p\WIDOT\Documents\DOT_Offices\District 5\Projects\I-57\70E37-CAD\Drawings\I-57\70E37-CA-Detour-157.dwg

USER NAME = gosnellc1	DESIGNED -	REVISED -
	DRAWN -	REVISED -
PLOT SCALE = 40,0000 ' / in.	CHECKED -	REVISED -
PLOT DATE = 10/18/2019	DATE -	REVISED -

**STATE OF ILLINOIS
 DEPARTMENT OF TRANSPORTATION**

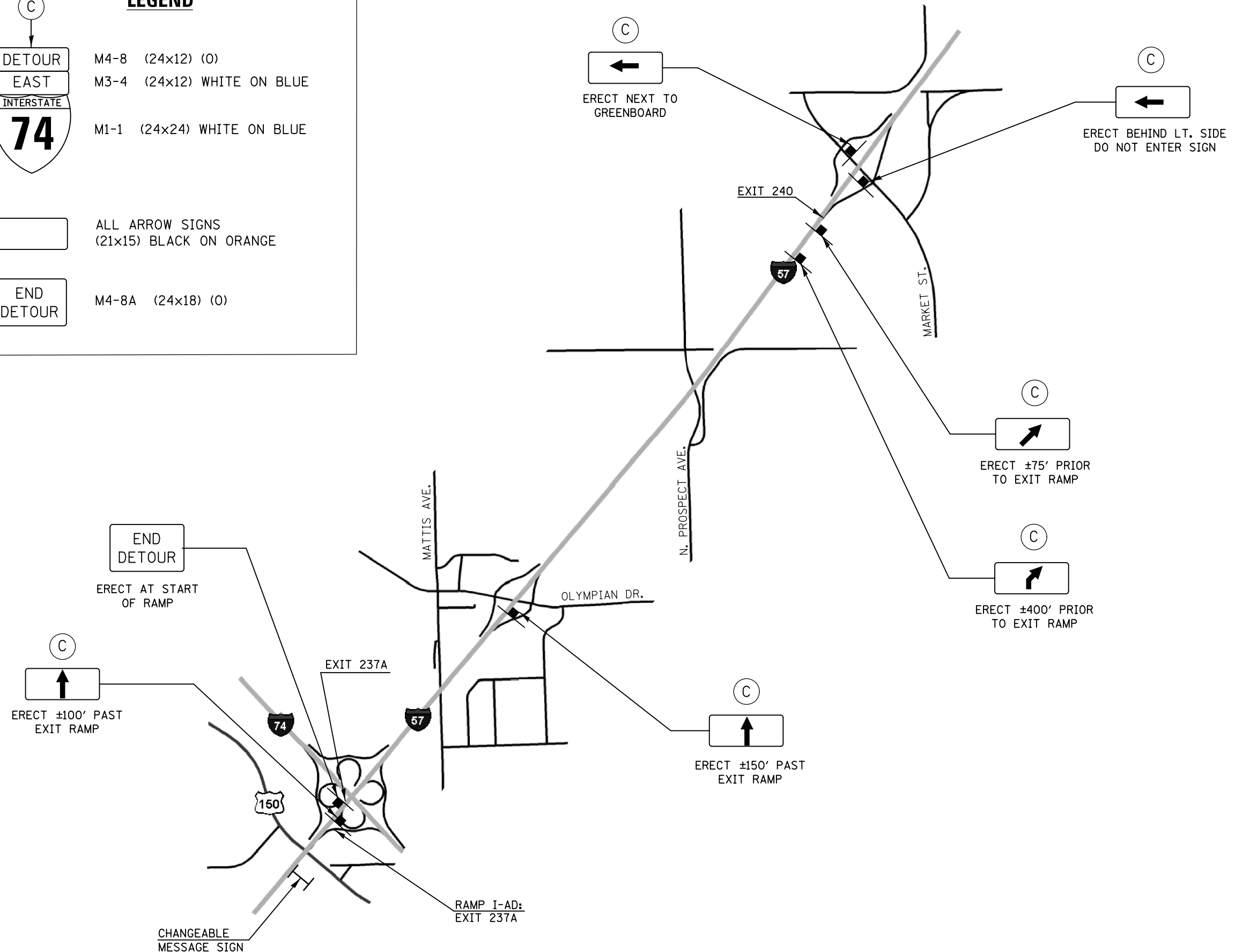
DETOUR SIGNING I-57/I-74 RAMP I-CA			
SCALE:	SHEET 1	OF 3 SHEETS	STA. TO STA.

** F.A.I. 57, F.A.I. 74 & F.A.S. 331				
F.A. RTE.	SECTION	COUNTY	TOTAL SHEETS	SHEET NO.
VAR.	D5 CM INLAY 2020-2	-	32	23
CONTRACT NO. 70E37				
ILLINOIS		FED. AID PROJECT		
CHAMPAIGN & VERMILION				

DETOUR SIGNING FOR RAMP I-AD

LEGEND

- (C)
- M4-8 (24x12) (0)
- M3-4 (24x12) WHITE ON BLUE
- M1-1 (24x24) WHITE ON BLUE
- ALL ARROW SIGNS (21x15) BLACK ON ORANGE
- M4-8A (24x18) (0)



RAMP I-AD - EXIT 237A:
 TAKE I-57 NORTH TO EXIT 240,
 THEN COME BACK SOUTH ON I-57
 TO EXIT 237A.

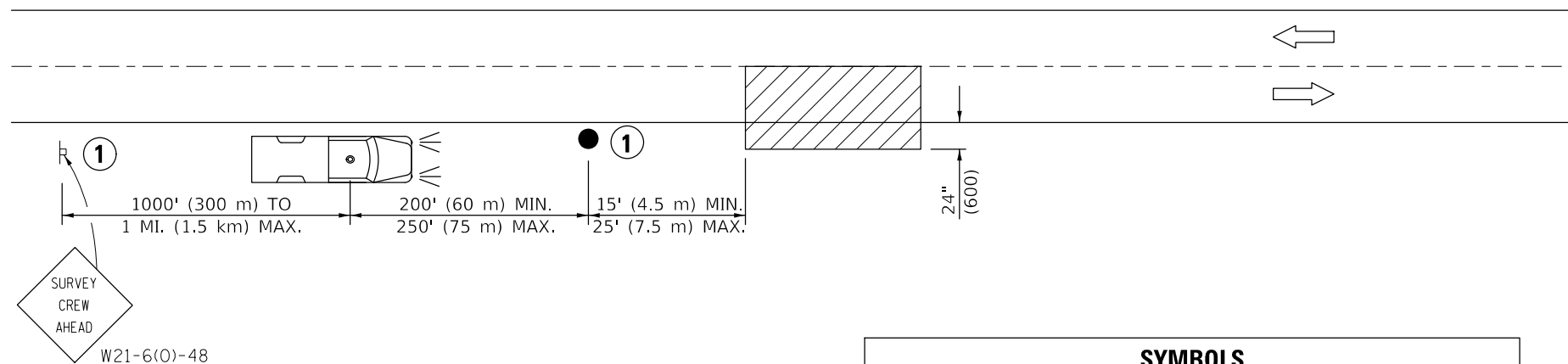
MODEL: \\MODEL\MARF...
 FILE: MARF...

USER NAME = gosnellc1	DESIGNED -	REVISED -
PLOT SCALE = 40,0000 ' / in.	DRAWN -	REVISED -
PLOT DATE = 10/18/2019	CHECKED -	REVISED -
	DATE -	REVISED -

**STATE OF ILLINOIS
 DEPARTMENT OF TRANSPORTATION**

DETOUR SIGNING I-57/I-74 RAMP I-AD			
SCALE:	SHEET 2	OF 3 SHEETS	STA. TO STA.

** F.A.I. 57, F.A.I. 74 & F.A.S. 331				
F.A. RTE.	SECTION	COUNTY	TOTAL SHEETS	SHEET NO.
VAR.	D5 CM INLAY 2020-2	-	32	24
			CONTRACT NO. 70E37	
ILLINOIS		FED. AID PROJECT		



TYPICAL APPLICATIONS
UTILITY OPERATIONS

SYMBOLS	
	WORK AREA
	SIGN ON PORTABLE OR PERMANENT SUPPORT
	TRUCK WITH FLASHING AMBER LIGHT AND DUAL EMERGENCY FLASHERS
	FLAGGER WITH TRAFFIC CONTROL SIGN

1 NOT REQUIRED FOR WORK ACTIVITIES IN OR WITHIN 2' OF TRAVELED LANE IN ONE LOCATION FOR LESS THAN 15 MINUTES (BRIEF ENCROACHMENT).

Note: All dimensions are in INCHES (millimeters) unless otherwise shown.

DISTRICT 5 DETAIL NO. 70100000

F.A. ** RTE.	SECTION	COUNTY	TOTAL SHEETS	SHEET NO.
VAR.	D5 CM INLAY 2020-2	-	32	26
CONTRACT NO. 70E37				

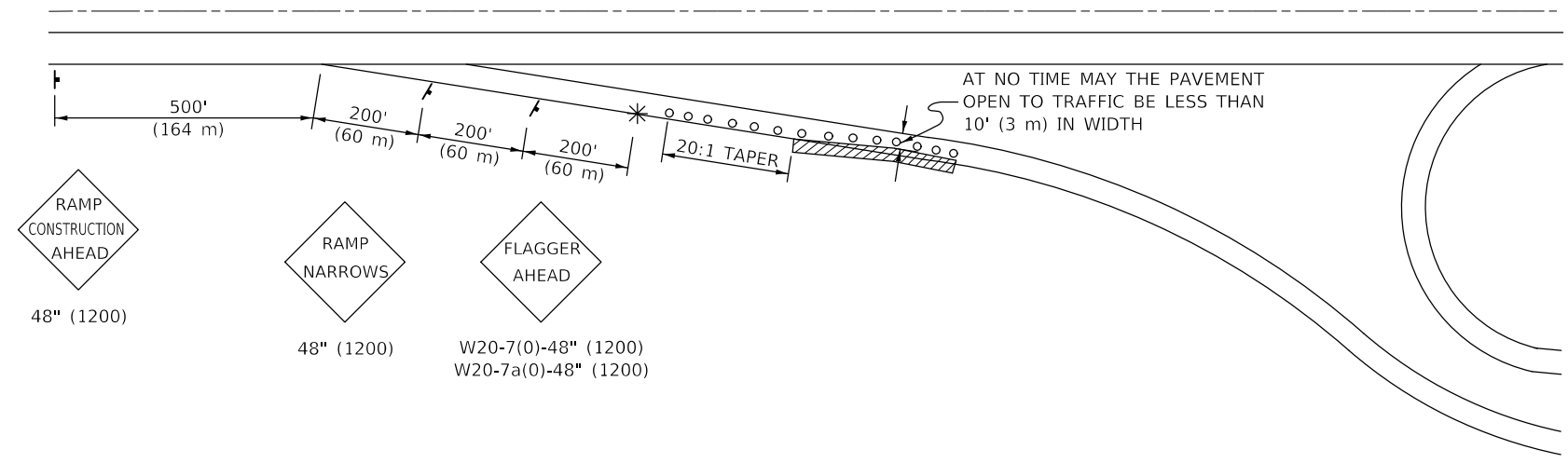
**STATE OF ILLINOIS
DEPARTMENT OF TRANSPORTATION**

NIGHT TIME INSPECTION OF ROADWAY LIGHTING

SCALE: SHEET 1 OF 1 SHEETS STA. TO STA.

USER NAME = gosnellcl	DESIGNED -	REVISED - 11/06
	DRAWN -	REVISED -
PLOT SCALE = 40,0000 ' / in.	CHECKED -	REVISED -
PLOT DATE = 10/18/2019	DATE -	REVISED -

APPLICATION NO. 1
DAY OPERATION ONLY
PARTIAL RAMP CLOSURE



SYMBOLS

- (APPLICATION NO. 1) TYPE I OR II BARRICADES OR DRUMS @ 50' (15 m) CTS.
- ⊗ (APPLICATION NO. 2) TYPE I OR II BARRICADES OR DRUMS @ 25' (7.5 m) CTS. W/STEADY BURNING LIGHTS
- * (APPLICATION NO. 1) FLAGGER PLACED AS DIRECTED BY THE ENGINEER
- † SIGN ON PORTABLE OR PERMANENT SUPPORT
- ▨ WORK AREA

TYPICAL APPLICATIONS

- PAVEMENT PATCHING
- PIPE UNDERDRAINS
- HMA RESURFACING

GENERAL NOTES

CONSTRUCTION OPERATIONS SHALL BE CONFINED TO AN AREA NARROW ENOUGH THAT A MINIMUM OF 10' (3 m) OF PAVEMENT SHALL BE OPEN TO TRAFFIC AT ALL TIMES.

FULL WIDTH PAVEMENT ON THE RAMPS SHALL BE OPEN TO TRAFFIC AT NIGHT.

WHEN NO WORK IS BEING PERFORMED, THE FLAGGER WILL NOT BE REQUIRED. IF THE FLAGGER IS NOT PRESENT, THE FLAGGER SIGNS SHALL BE REMOVED OR COVERED.

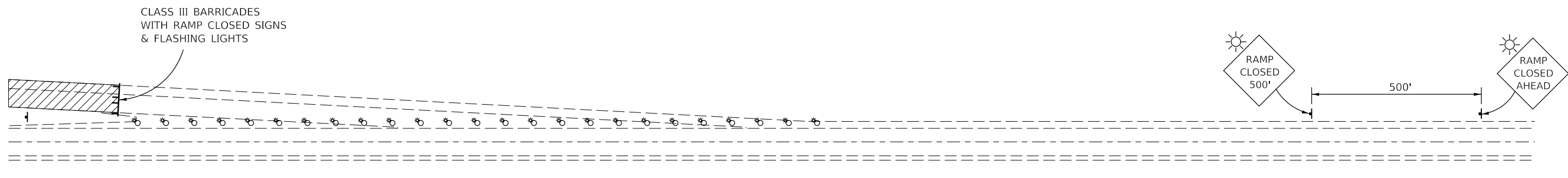
ALL SIGNS SHALL BE POST MOUNTED IF WORK IN THE AREA EXCEEDS FOUR DAYS OF DAYTIME OPERATIONS.

LONGITUDINAL DIMENSIONS MAY BE ADJUSTED SLIGHTLY TO FIT FIELD CONDITIONS.

ALL VEHICLES, EQUIPMENT, WORKERS (EXCEPT FLAGGER) AND THEIR ACTIVITIES ARE RESTRICTED AT ALL TIMES TO ONE SIDE OF THE PAVEMENT UNLESS OTHERWISE AUTHORIZED BY THE DISTRICT ENGINEER.

TRAFFIC CONTROL FOR ALL RAMPS SHALL BE IN ACCORDANCE WITH THE APPROPRIATE APPLICATION OF PLAN DETAIL TRAFFIC CONTROL FOR RAMPS AND WILL NOT BE PAID FOR SEPARATELY, BUT SHALL BE INCLUDED IN THE CONTRACT LUMP SUM PRICES FOR TRAFFIC CONTROL AND PROTECTION, STANDARD 701401 AND TRAFFIC CONTROL AND PROTECTION, STANDARD 701406.

APPLICATION NO. 2
RAMP CLOSURE



GENERAL NOTES

STEADY BURN LIGHTS ARE NOT REQUIRED FOR DAYTIME OPERATIONS.

CONTACT THE DISTRICT TRAFFIC OPERATIONS ENGINEER AT 217-465-4181, ONE WEEK PRIOR TO CLOSING THE RAMP.

Note: All dimensions are in INCHES (millimeters) unless otherwise shown.

MODEL: \\MODEL\NAME: FILE: \\NAME: \\PROJECTS\70E37\CADD\DATA\CAD\PROJECTS\70E37\CHC\District_Details.dgn

USER NAME = gosnellc1	DESIGNED -	REVISED - 11/06
PLOT SCALE = 40.0000 ' / in.	DRAWN -	REVISED -
PLOT DATE = 10/18/2019	CHECKED -	REVISED -
	DATE -	REVISED -

**STATE OF ILLINOIS
DEPARTMENT OF TRANSPORTATION**

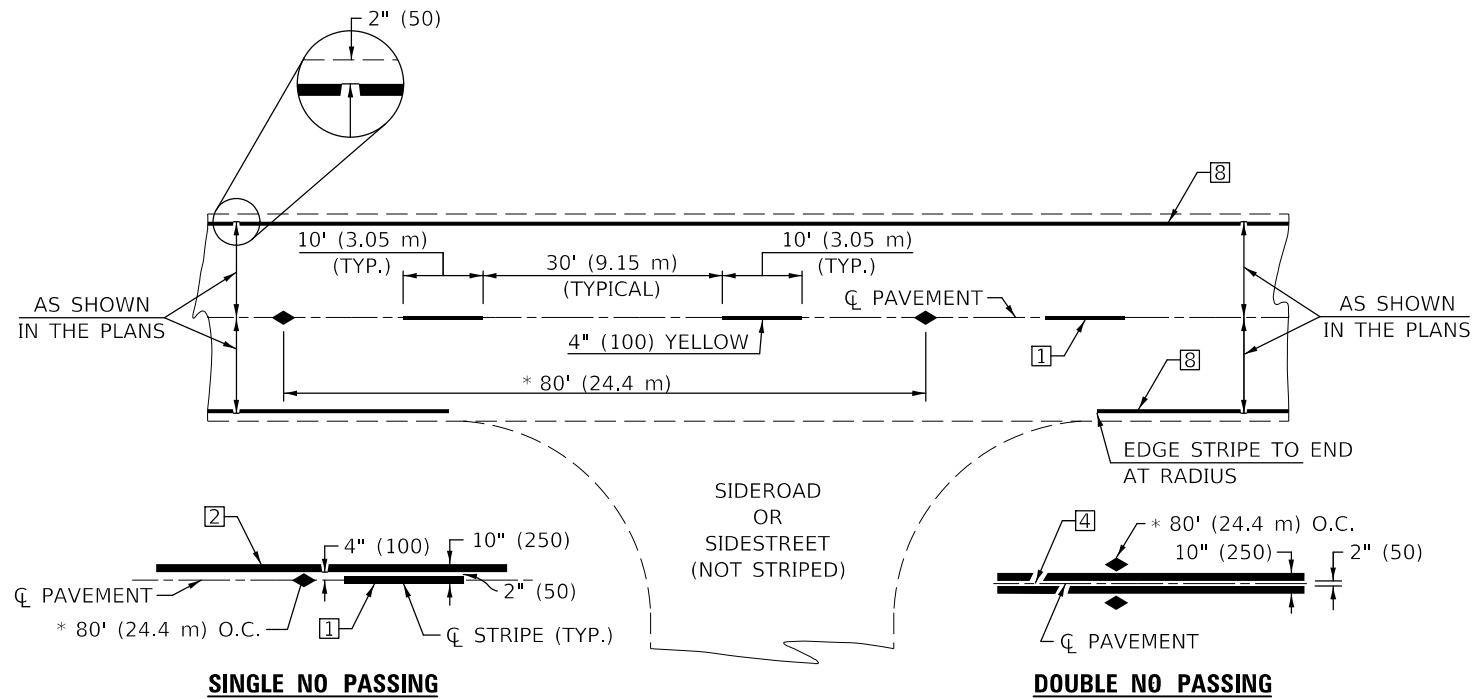
TRAFFIC CONTROL FOR RAMPS

SCALE: SHEET 1 OF 1 SHEETS STA. TO STA.

DISTRICT 5 DETAIL NO. 70103710

F.A. ** RTE.	SECTION	COUNTY	TOTAL SHEETS	SHEET NO.
VAR.	D5 CM INLAY 2020-2	-	32	27
			CONTRACT NO. 70E37	

** F.A.I. 57, F.A.I. 74 & F.A.S. 331 CHAMPAIGN & VERMILION

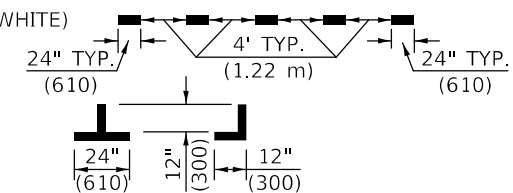
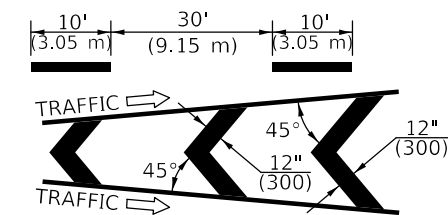
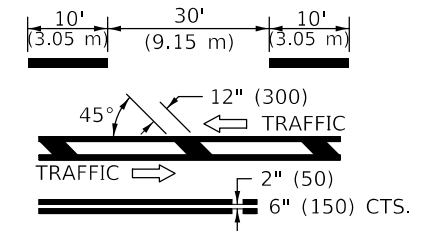


* REDUCE TO 40' (12.2 m) O.C. ON CURVES WITH POSTED OR ADVISORY SPEEDS OF 45 mph (70 km/h) OR LESS.

TWO LANE/TWO WAY

TYPICAL PAVEMENT MARKING LEGEND

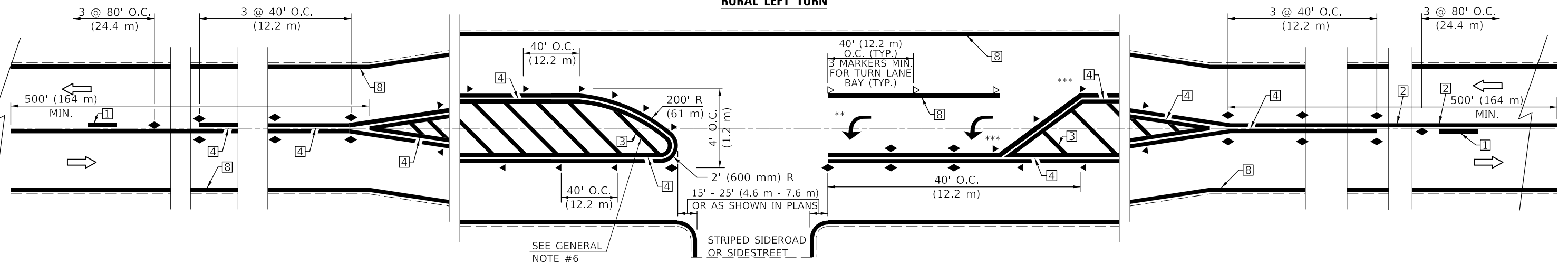
- 1 4" (100) SKIP-DASH (YELLOW)
- 2 4" (100) SOLID (YELLOW)
- 3 12" (300) DIAGONAL (YELLOW)
- 4 4" (100) DOUBLE YELLOW (NARROW)
- 5 RESERVED
- 6 RESERVED
- 7 4" (100) SKIP-DASH (WHITE)
- 8 4" (100) SOLID (WHITE)
- 9 12" (300) DIAGONAL (WHITE)
- 10 6" (150) SOLID (WHITE)
- 11 24" (600) STOP BAR (WHITE)
- 12 8" (200) SOLID (WHITE)
- 13 4" (100) LANE LINE EXTENSIONS (WHITE)
- 14 4" (100) PARKING WHITE



TYPICAL PAVEMENT MARKERS LEGEND

- ◆ TWO-WAY AMBER MARKER
- ▶ ONE-WAY AMBER MARKER
- ▷ ONE-WAY CRYSTAL MARKER

RURAL LEFT TURN



*** REDUCE SPACING IF NECESSARY TO ASSURE MARKERS AT CORNER POINTS.

** TURN ARROWS SHALL BE PLACED AS SHOWN ON SHEET #2.

Note: All dimensions are in INCHES (millimeters) unless otherwise shown.

DISTRICT 5 DETAIL NO. 7800AAAA

MODEL: \\MODEL\MARF... FILE: \\MARF... \Projects\70E37\CADD\Drawings\DOT_Offices\District 5\Projects\70E37\CADD\Drawings\70E37-R&U-District_Details.dgn

USER NAME = gossnellc1	DESIGNED -	REVISED - 11/06
	DRAWN -	REVISED - 9/2009 KJT
PLOT SCALE = 40.0000 ' / in.	CHECKED -	REVISED - 04/14 JLA
PLOT DATE = 10/18/2019	DATE -	REVISED - 3/2019 SWN

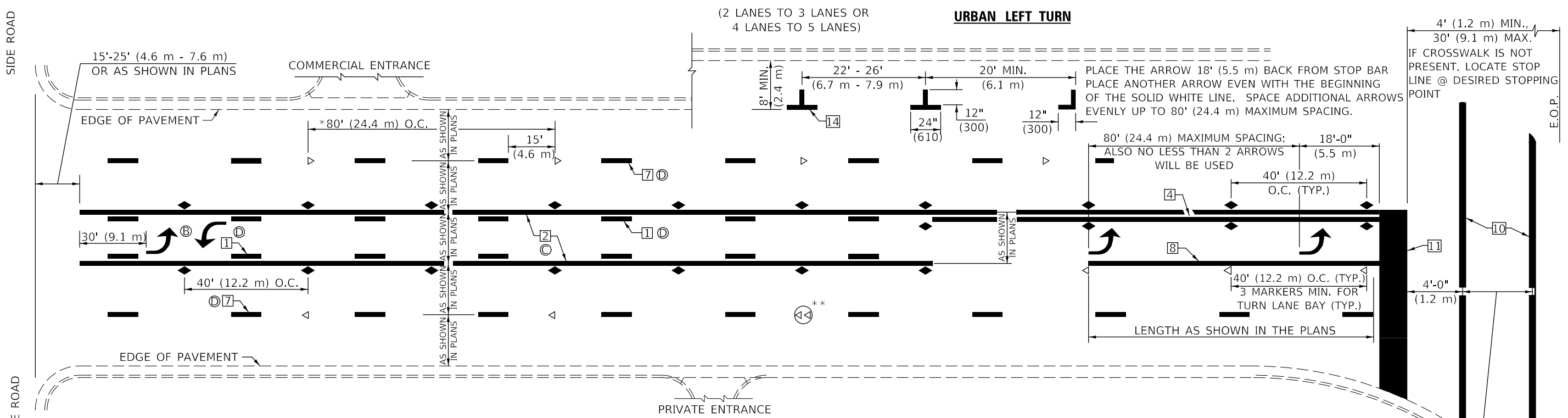
**STATE OF ILLINOIS
DEPARTMENT OF TRANSPORTATION**

**PAVEMENT MARKING AND MARKERS
(RURAL & URBAN APPLICATIONS)**

SCALE: SHEET 1 OF 4 SHEETS STA. TO STA.

F.A. ** RTE.	SECTION	COUNTY	TOTAL SHEETS	SHEET NO.
VAR.	D5 CM INLAY 2020-2	-	32	28
CONTRACT NO. 70E37				

ILLINOIS FED. AID PROJECT CHAMPAIGN & VERMILION

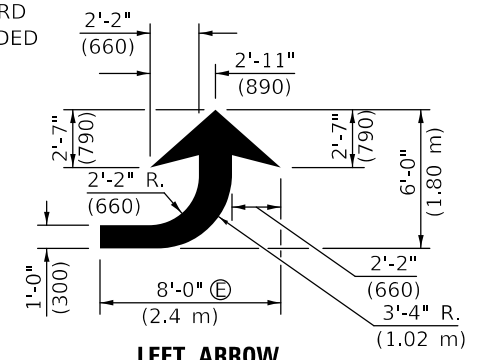


* REDUCE TO 40 FEET (12.2 METERS) ON CENTER ON CURVES WHERE ADVISORY SPEEDS ARE 10 MPH (15 km/h) LOWER THAN POSTED SPEEDS.

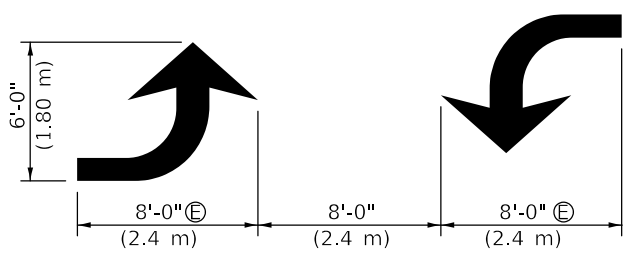
** DOUBLE LANE LINE MARKERS SHALL BE SPECIFIED AND SPACED AS SHOWN IN HIGHWAY STANDARD 781001 FOR MULTI-LANE DIVIDED AND UNDIVIDED HIGHWAYS.

GENERAL NOTES:

- (B) TURN ARROW PAIRS SHALL BE PLACED AT 250' (75 m) INTERVALS AND SHALL BE EVENLY SPACED BETWEEN BOTH ENDS OF THE BIDIRECTIONAL LEFT TURN LANE.
- (C) THE SOLID YELLOW PAVEMENT MARKINGS [2] SHOULD GENERALLY START OR END NEAR THE RADIUS POINT OF EACH STREET RETURN EXCEPT WHERE ONE OR BOTH ENDS WOULD INCLUDE STOP BARS.
- (D) THE SKIP-DASH PAVEMENT MARKINGS [1] OR [7] SHOULD BE CENTERED BETWEEN BOTH ENDS OF EACH CITY BLOCK AND SHALL BE PLACED SO THEY LINE UP ACROSS FROM EACH OTHER. SEE EXAMPLE ON SHEET 2 OF 3.
- (E) USE LARGE ARROW SIZE FOR BOTH RURAL AND URBAN LOCATIONS. (SEE LAST PAGE OF SECTION 780x FOR SYMBOLS TABLE)

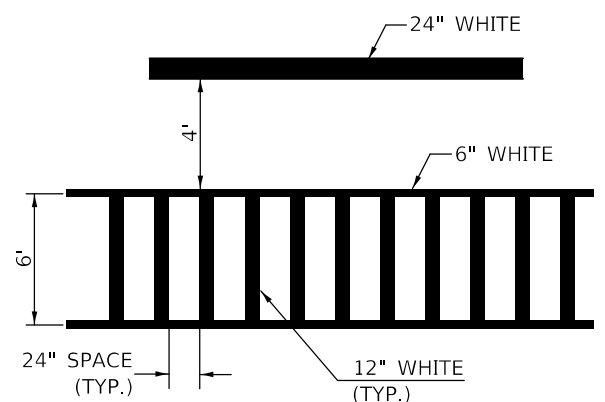


LEFT ARROW
 REVERSE FOR RIGHT ARROW
 AREA = 15.6 SQ. FT. (1.47 m²) (WHITE)

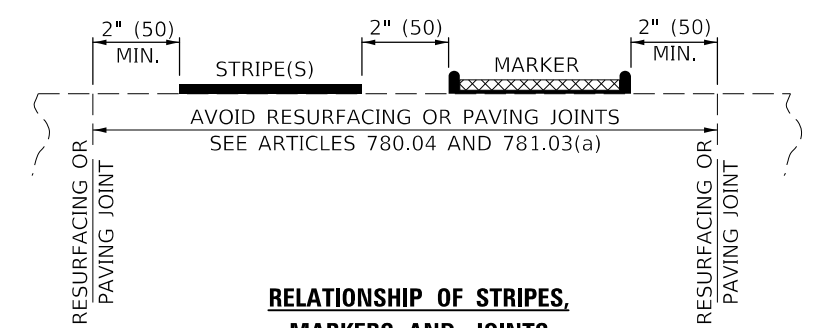


TYPICAL DOUBLE TURN ARROWS (WHITE)

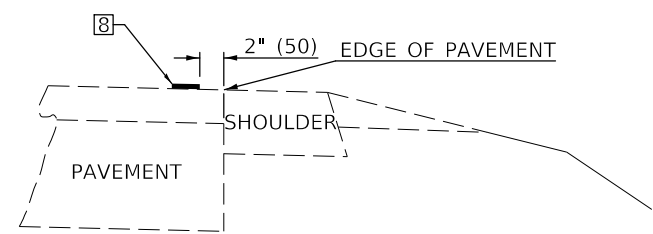
BLOOMINGTON-NORMAL CITY LIMITS ONLY



TYPICAL SPACING FOR CROSSWALKS & STOP BARS



RELATIONSHIP OF STRIPES, MARKERS AND JOINTS



RELATIONSHIP OF EDGE LINE TO EDGE OF PAVEMENT
 (SAFETY SHOULDER OR PAVED SURFACE)
 SEE ARTICLE 780.04

CROSSWALK WIDTH 6'-0" (1.8 m) OR AS SHOWN IN THE PLANS

Note: All dimensions are in INCHES (millimeters) unless otherwise shown.

DISTRICT 5 DETAIL NO. 7800AAAA

MODEL: I:\MODEL\NAME: FILE: NAME: P:\pub\mcomas.dwg: I:\links\gov\p\WIDOT\Documents\DOT_Offices\District_5\Projects\0570E37\CADDData\CAD\References\70E37_rpt-District_Details.dgn

USER NAME = gosnellc1	DESIGNED -	REVISED - 11/06
	DRAWN -	REVISED - 9/2009 KJT
PLOT SCALE = 40.0000 ' / in.	CHECKED -	REVISED - 04/14 JLA
PLOT DATE = 10/18/2019	DATE -	REVISED - 3/2019 SWN

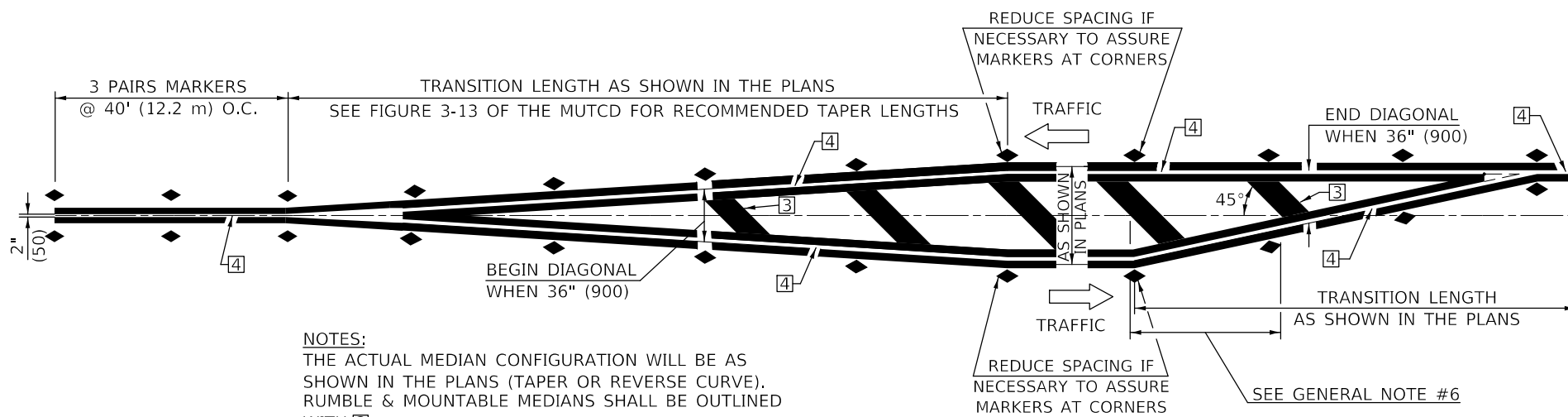
STATE OF ILLINOIS DEPARTMENT OF TRANSPORTATION

PAVEMENT MARKING AND MARKERS (RURAL & URBAN APPLICATIONS)

SCALE: SHEET 2 OF 4 SHEETS STA. TO STA.

F.A. RTE.	SECTION	COUNTY	TOTAL SHEETS	SHEET NO.
VAR.	D5 CM INLAY 2020-2	-	32	29
CONTRACT NO. 70E37				
ILLINOIS FED. AID PROJECT				

** F.A.I. 57, F.A.I. 74 & F.A.S. 331 CHAMPAIGN & VERMILION

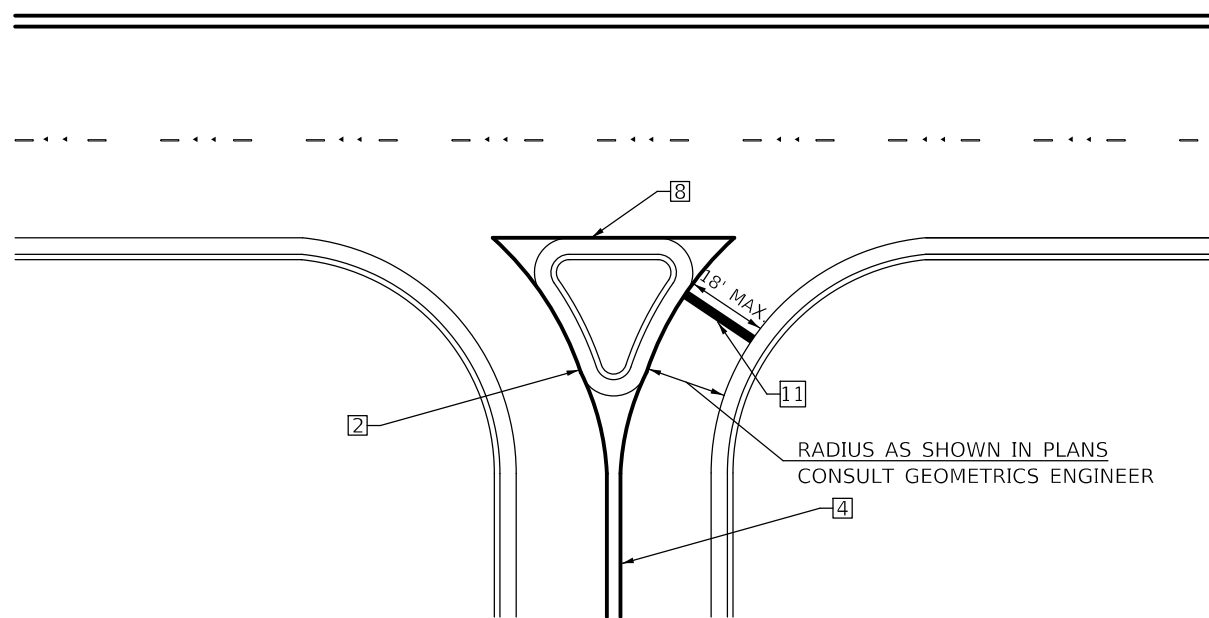


NOTES:
THE ACTUAL MEDIAN CONFIGURATION WILL BE AS SHOWN IN THE PLANS (TAPER OR REVERSE CURVE). RUMBLE & MOUNTABLE MEDIANS SHALL BE OUTLINED WITH [2].

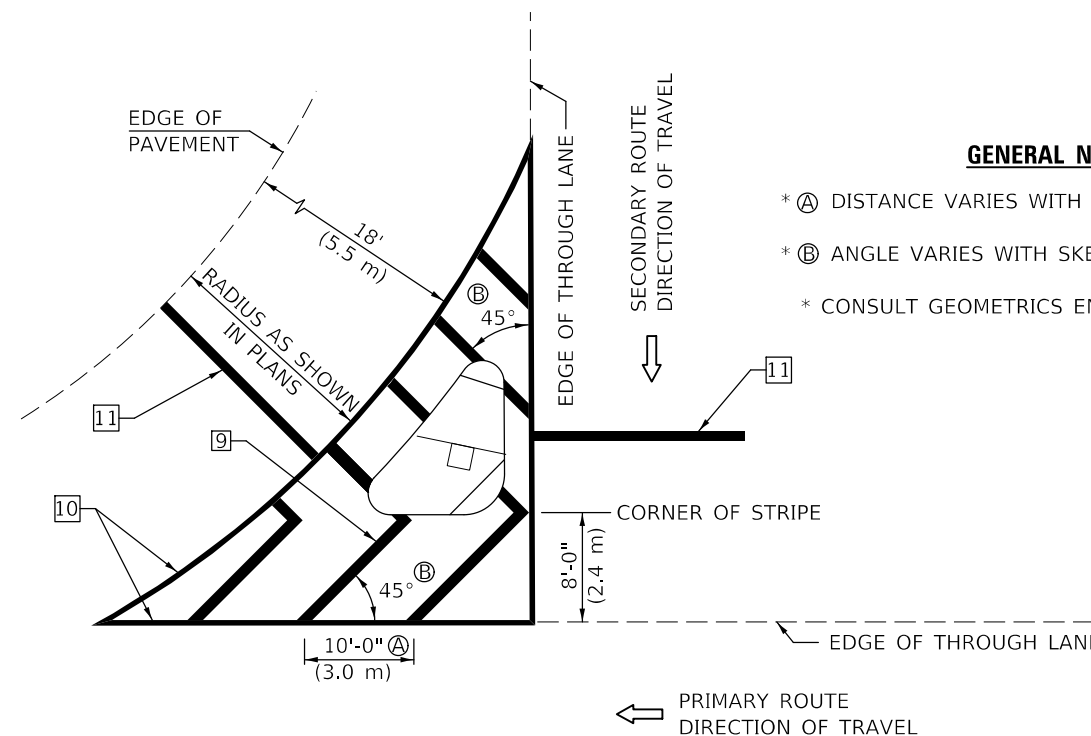
TYPICAL MEDIAN TRANSITIONS

GENERAL NOTES

1. WHEN MEDIANS ARE PRESENT, PAVEMENT MARKINGS ARE TO BE PLACED ADJACENT TO MEDIANS.
2. SOME OF THE INFORMATION INCLUDED WITH THIS DETAIL MAY NOT BE APPLICABLE TO THIS IMPROVEMENT.
3. PAVEMENT MARKINGS ARE TO BE EXTENDED THROUGH OMISSIONS WHEN APPLICABLE.
4. A STRIPING KEY IS AVAILABLE ELSEWHERE AND SHALL BE SHOWN WHERE THE QUANTITIES ARE LISTED.
5. FINAL PAVEMENT MARKINGS SHALL BE IN PLACE PRIOR TO PLACING ANY RAISED REFLECTIVE PAVEMENT MARKERS.
6. THE FOLLOWING CRITERIA SHALL BE USED FOR SELECTING THE DIAGONAL PAVEMENT MARKING SPACING,
<30 MPH USE 15' (<50 km/h USE 4.5 m)
30-45 MPH USE 20' (50-75 km/h USE 6.0 m)
>45 MPH USE 30' (>75 km/h USE 9.0 m)



RIGHT IN - RIGHT OUT ACCESS



ISLAND

GENERAL NOTES

- * (A) DISTANCE VARIES WITH SKEW OF INTERSECTION.
- * (B) ANGLE VARIES WITH SKEW OF INTERSECTION.
- * CONSULT GEOMETRICS ENGINEER

Note: All dimensions are in INCHES (millimeters) unless otherwise shown.

DISTRICT 5 DETAIL NO. 7800AAAA

USER NAME = gosnellcl	DESIGNED -	REVISED - 11/06
	DRAWN -	REVISED - 9/2009 KJT
PLOT SCALE = 40,0000 ' / in.	CHECKED -	REVISED - 04/14 JLA
PLOT DATE = 10/18/2019	DATE -	REVISED - 3/2019 SWN

**STATE OF ILLINOIS
DEPARTMENT OF TRANSPORTATION**

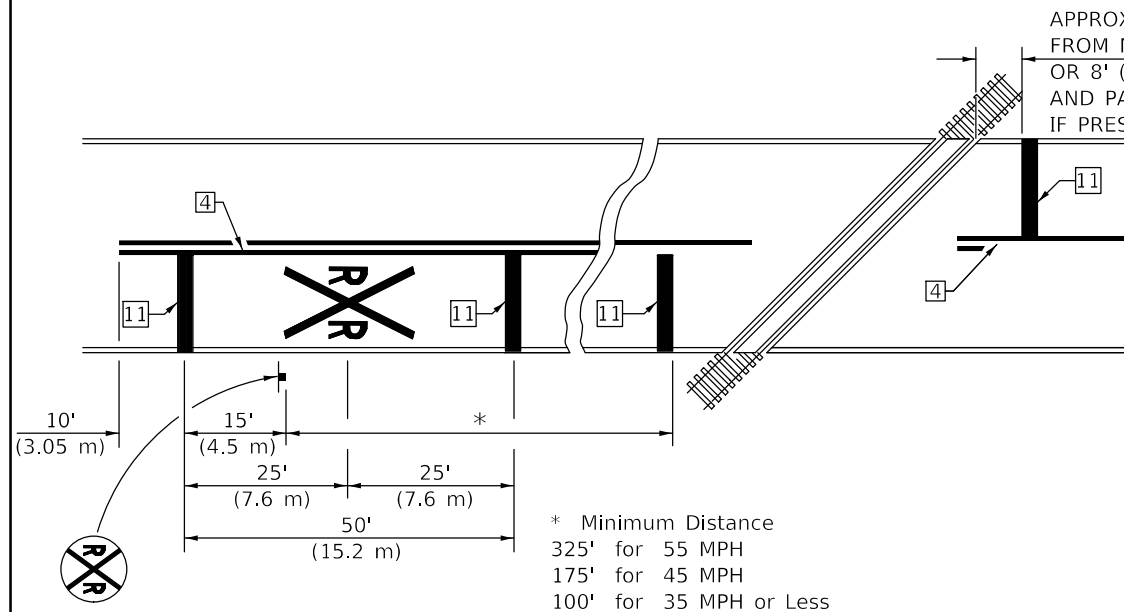
**PAVEMENT MARKING AND MARKERS
(RURAL & URBAN APPLICATIONS)**

SCALE: SHEET 3 OF 4 SHEETS STA. TO STA.

F.A. ** RTE.	SECTION	COUNTY	TOTAL SHEETS	SHEET NO.
VAR.	D5 CM INLAY 2020-2	*	32	30
ILLINOIS FED. AID PROJECT			CONTRACT NO. 70E37	

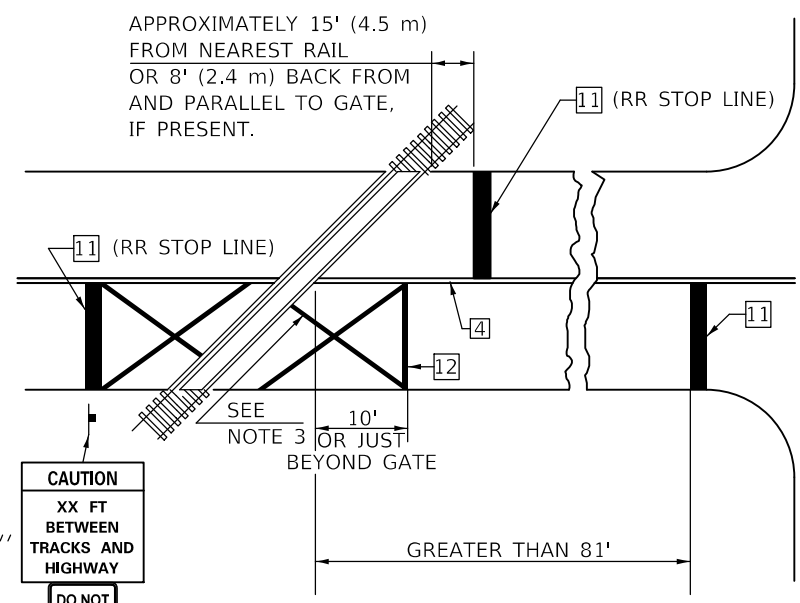
MODEL: s:\MODEL\MAR15
FILE: MAR15: s:\pub\mcom\ma.dwg
PROJECT: s:\projects\0570E37\0570E37\CADDData\CAD\papers\0570E37-rh-District_Details.dgn

MODEL: \\MODEL\MARF... FILE: MARF... PROJECT: 0570E37\CADDData\CAD\pkcs0570E37-rhc-District_Details.dgn



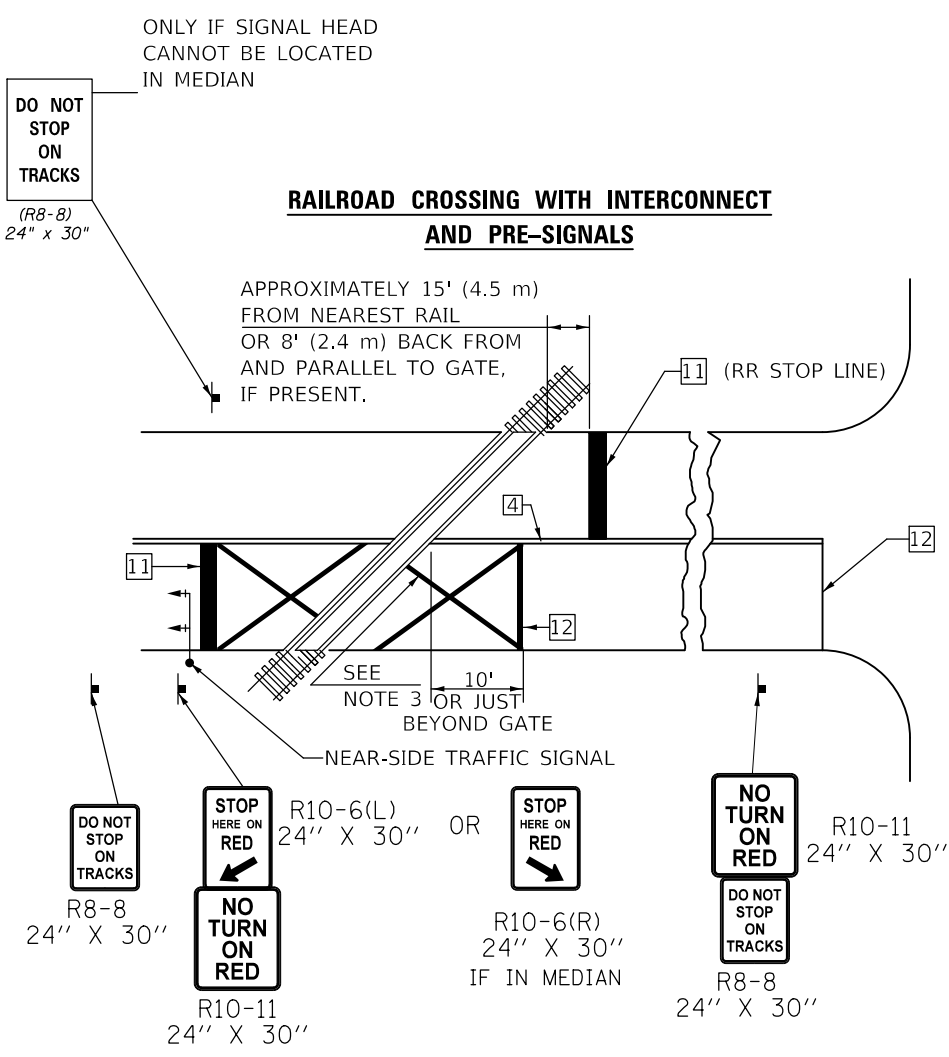
PAVEMENT MARKINGS AT RAILROAD-HIGHWAY GRADE CROSSING

RAILROAD CROSSING WITH INTERCONNECT ONLY



W10-I100
30" X 36"
CAUTION
XX FT
BETWEEN
TRACKS AND
HIGHWAY
DO NOT
STOP
ON
TRACKS
R8-8
24" X 30"

RAILROAD CROSSING WITH INTERCONNECT AND PRE-SIGNALS



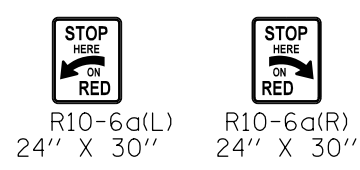
DO NOT STOP ON TRACKS (R8-8) 24" x 30"
ONLY IF SIGNAL HEAD CANNOT BE LOCATED IN MEDIAN
APPROXIMATELY 15' (4.5 m) FROM NEAREST RAIL OR 8' (2.4 m) BACK FROM AND PARALLEL TO GATE, IF PRESENT.
(RR STOP LINE)
SEE NOTE 3 OR JUST BEYOND GATE
10'
NEAR-SIDE TRAFFIC SIGNAL
STOP HERE ON RED R10-6(L) 24" X 30" OR STOP HERE ON RED R10-6(R) 24" X 30" IF IN MEDIAN
NO TURN ON RED R10-11 24" X 30"
DO NOT STOP ON TRACKS R8-8 24" X 30"

GENERAL NOTES

1. SUPPLEMENTAL PAVEMENT MARKINGS TO BE INSTALLED ONLY ON APPROACHES TO INTERSECTIONS CONTROLLED BY TRAFFIC SIGNALS WHICH ARE INTERCONNECTED WITH THE RAILROAD WARNING SIGNALS.
2. EXTEND PAVEMENT MARKINGS TO THE INTERSECTION ONLY WHERE NEAR-SIDE TRAFFIC SIGNALS ARE USED.
3. 6" WHITE PAVEMENT MARKINGS AT 45° TO PAVEMENT, 8' CENTER TO CENTER.
4. XX DISTANCE TO BE SHOWN ON SIGN MEASURED FROM A POINT 6 FEET FROM THE RAIL CLOSEST TO THE INTERSECTION OR FROM THE CLOSEST POINT ALONG THE EXIT GATE IF PRESENT OVER THE ROADWAY WHEN IN THE LOWERED POSITION TO THE STOP BAR OR CROSSWALK, WHICH EVER IS CLOSEST, ROUNDED DOWN TO NEAREST 5 FEET. WHERE THERE IS NO STOP LINE, MEASURE TO POINT WHERE DRIVER HAS A VIEW OF APPROACHING TRAFFIC.
5. THE CLEARANCE SIGN IS ALSO TO BE USED AS AN INTERIM MEASURE AT LOCATIONS WITH INTERCONNECTED INTERSECTION TRAFFIC SIGNALS WHERE IT IS PLANNED TO CHANGE THEM TO NEAR-SIDE SIGNALS AT A FUTURE TIME. IN THIS CASE, THE DISTANCE TO BE SHOWN ON THE SIGN IS MEASURED FROM THE EDGE OF THE STRIPED-OUT AREA INSTEAD OF 6 FEET FROM THE RAIL. THE SIGN IS TO BE REMOVED WHEN THE NEAR-SIDE SIGNALS ARE INSTALLED AND THE PAVEMENT MARKINGS EXTENDED TO THE INTERSECTION.

SUPPLEMENTAL PAVEMENT MARKING TREATMENT FOR RAILROAD-HIGHWAY GRADE CROSSING

ALTERNATE SIGNS



NOTES

THE TRAVERSE SPREAD OF THE "X" MAY VARY ACCORDING TO LANE WIDTH.
ON MULTI-LANE ROADS, THE STOP LINES SHALL EXTEND ACROSS ALL APPROACH LANES AND SEPARATE RXR SYMBOLS SHALL BE PLACED ADJACENT TO EACH OTHER IN EACH LANE.
WHEN THE PAVEMENT MARKING SYMBOL IS USED, A PORTION OF THE SYMBOL SHOULD BE LOCATED DIRECTLY ADJACENT TO THE ADVANCE WARNING SIGN (W10-1) AS PLACED BY TABLE II-1, CONDITION B OF THE MUTCD.

Note: All dimensions are in INCHES (millimeters) unless otherwise shown.

DISTRICT 5 DETAIL NO. 7800AAAA

USER NAME = goslntcl	DESIGNED -	REVISED - 11/06
	DRAWN -	REVISED - 9/2009 KJT
PLOT SCALE = 40.0000 ' / in.	CHECKED -	REVISED - 04/14 JLA
PLOT DATE = 10/18/2019	DATE -	REVISED - 3/2019 SWN

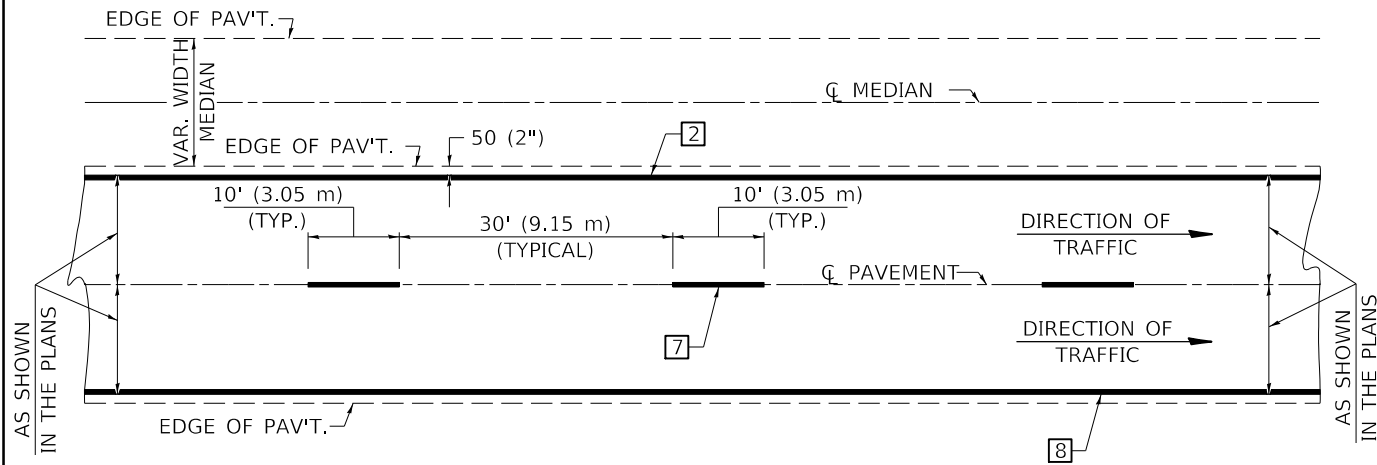
STATE OF ILLINOIS DEPARTMENT OF TRANSPORTATION

PAVEMENT MARKING AND MARKERS (RURAL & URBAN APPLICATIONS)

SCALE: SHEET 4 OF 4 SHEETS STA. TO STA.

F.A. ** RTE.	SECTION	COUNTY	TOTAL SHEETS	SHEET NO.
VAR.	D5 CM INLAY 2020-2	-	32	31
CONTRACT NO. 70E37				
ILLINOIS FED. AID PROJECT				

CENTERLINE INTERSTATE OR MULTI-LANE TWO WAY DIVIDED HIGHWAY

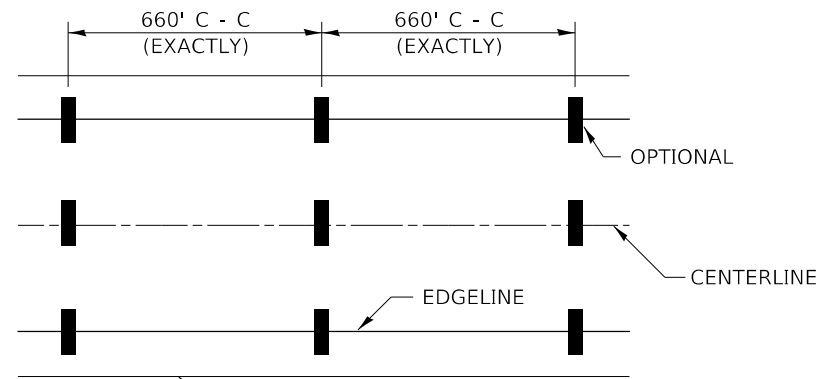


NOTE: PAVEMENT MARKINGS ARE TO BE EXTENDED THROUGH OMISSIONS WHEN APPLICABLE.

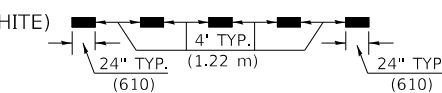
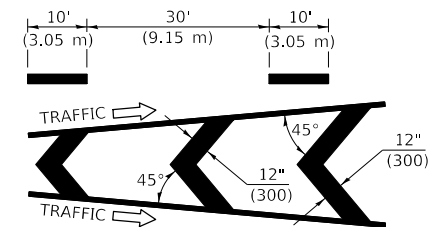
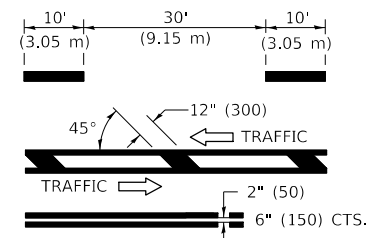
NOTE: SEE ARTICLES 780.04 & 781.03 FOR LOCATION OF STRIPES AND MARKERS RELATIVE TO EDGES OR JOINTS.

FOR RAISED REFLECTIVE PAVEMENT MARKERS, REFER TO STANDARD 781001.

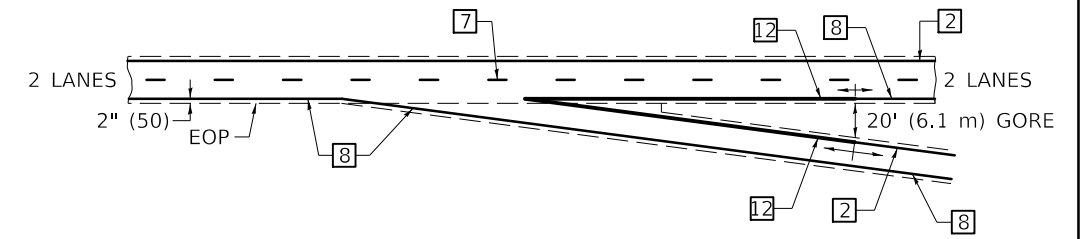
TYPICAL PAVEMENT MARKING LEGEND



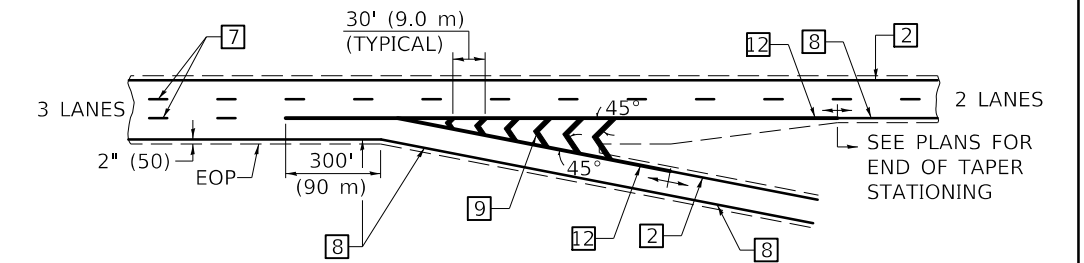
- 1 4" (100) SKIP-DASH (YELLOW)
- 2 4" (100) SOLID (YELLOW)
- 3 12" (300) DIAGONAL (YELLOW)
- 4 4" (100) DOUBLE YELLOW (NARROW)
- 5 RESERVED
- 6 RESERVED
- 7 4" (100) SKIP-DASH (WHITE)
- 8 4" (100) SOLID (WHITE)
- 9 12" (300) DIAGONAL (WHITE)
- 10 6" (150) SOLID (WHITE)
- 11 24" (600) STOP BAR (WHITE)
- 12 8" (200) SOLID (WHITE)
- 13 4" (100) LANE LINE EXTENSIONS (WHITE)



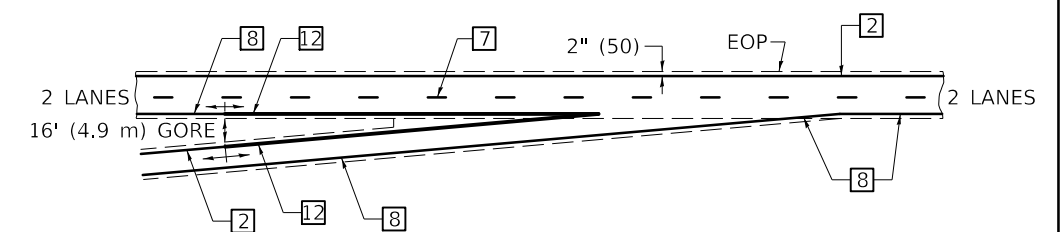
TYPICAL EXIT RAMP TERMINAL



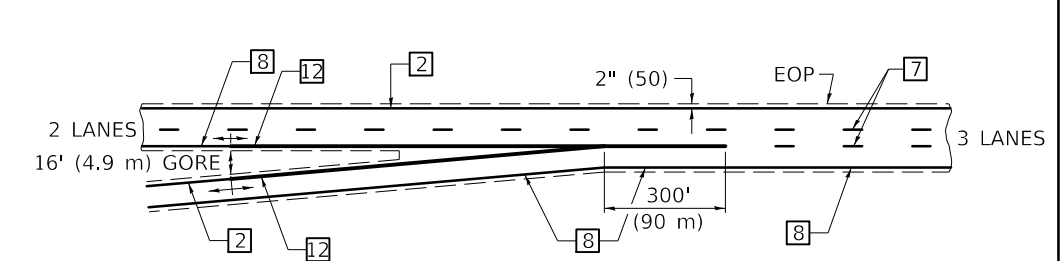
EXIT RAMP TERMINAL with EXCLUSIVE (auxiliary) LANE



TYPICAL ENTRANCE RAMP TERMINAL

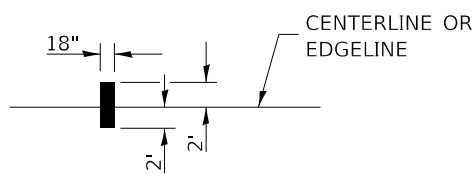


ENTRANCE RAMP TERMINAL with EXCLUSIVE LANE

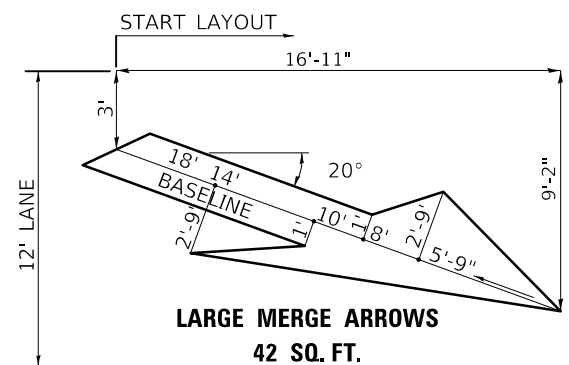


EDGE OF PAVED SHOULDER

IT WILL BE NECESSARY TO HAVE A REPRESENTATIVE OF THE STATE POLICE PRESENT SO THAT THE ACCURACY OF MEASUREMENT CAN BE ATTESTED TO IN COURT.



AERIAL SPEED CHECK ZONES



Note: All dimensions are in INCHES (millimeters) unless otherwise shown.

DISTRICT 5 DETAIL NO. 7800BBBB

USER NAME = gnosnellc1	DESIGNED -	REVISED - 11/06
	DRAWN -	REVISED -
PLOT SCALE = 40.0000 "/td> <td>CHECKED -</td> <td>REVISED -</td>	CHECKED -	REVISED -
PLOT DATE = 10/18/2019	DATE -	REVISED -

**STATE OF ILLINOIS
DEPARTMENT OF TRANSPORTATION**

PAVEMENT MARKING (INTERSTATE & MULTI-LANE APPLICATIONS)

SCALE: SHEET 1 OF 1 SHEETS STA. TO STA.

F.A. ** RTE.	SECTION	COUNTY	TOTAL SHEETS	SHEET NO.
VAR.	D5 CM INLAY 2020-2	-	32	32
CONTRACT NO. 70E37				

ILLINOIS FED. AID PROJECT CHAMPAIGN & VERMILION

MODEL: s:\MODEL\NAME: FILE: Name: s:\pub\mcom\ma.dta\illinois.gov\PWD\DOT\Documents\DOT_Offices\District_5\Projects\0570E37\CADD\DATA\CAD\References\0570E37.dwg-District_Details.dgn