

STATE OF ILLINOIS
DEPARTMENT OF TRANSPORTATION

ROUTE	SECTION	COUNTY	TOTAL SHEETS	SHEET NO.
VAR.	2024-1013-LS	VARIOUS	6	1
ILLINOIS			CONTRACT NO. 62X51	

D-91-035-25

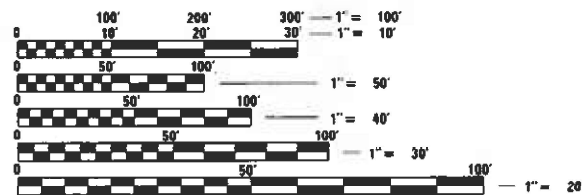
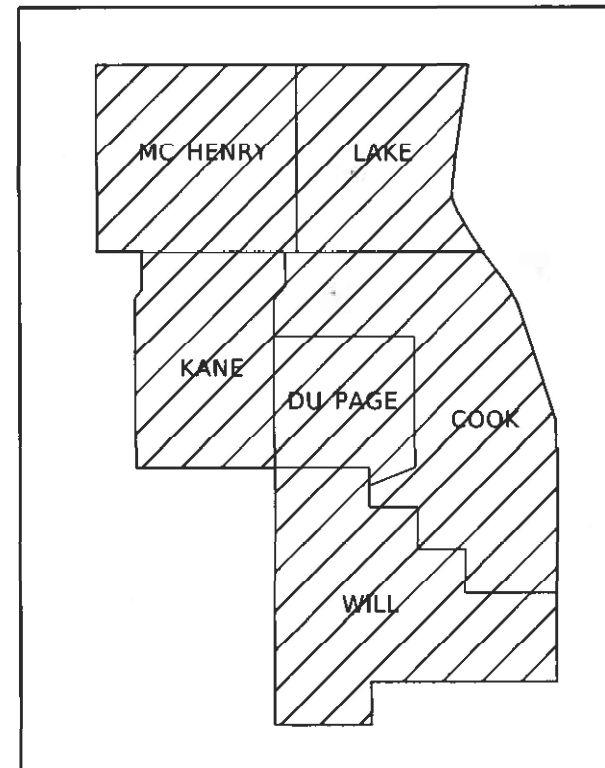
FOR INDEX OF SHEETS, SEE SHEET NO. 2

PROPOSED HIGHWAY PLANS

ROUTE VARIOUS
SECTION 2024-1013-LS
PROJECT N/A
ECOLOGICAL LANDSCAPE RESTORATION
VARIOUS COUNTY

C-91-042-25

IMPROVEMENTS ARE AT VARIOUS
LOCATIONS WITHIN DISTRICT ONE



FULL SIZE PLANS HAVE BEEN PREPARED USING STANDARD ENGINEERING SCALES. REDUCED SIZED PLANS WILL NOT CONFORM TO STANDARD SCALES. IN MAKING MEASUREMENTS ON REDUCED PLANS, THE ABOVE SCALES MAY BE USED.

J.U.L.I.E.
JOINT UTILITY LOCATION INFORMATION FOR EXCAVATORS
1-800-892-0123
OR 811

PROJECT ENGINEER GIOVANNA ZAFFINA (847)705-4171
PROJECT MANAGER JACEK EJMONT

CONTRACT NO. 62X51

GROSS LENGTH = x.xx FT. = x.xxx MILE
NET LENGTH = x.xx FT. = x.xxx MILE

STATE OF ILLINOIS
DEPARTMENT OF TRANSPORTATION

SUBMITTED Oct 21, 2024

[Signature]
REGIONAL ENGINEER

December 6, 2024

[Signature]
ENGINEER OF DESIGN AND ENVIRONMENT

December 6, 2024

[Signature]
DIRECTOR OF HIGHWAYS PROJECT IMPLEMENTATION

PRINTED BY THE AUTHORITY
OF THE STATE OF ILLINOIS

INDEX OF SHEETS

SHEET NO.	DESCRIPTION
1	COVER SHEET
2	INDEX OF SHEETS, HIGHWAY STANDARDS, GENERAL NOTES
3	SUMMARY OF QUANTITIES
4	LOCATIONS
5	TRAFFIC CONTROL AND PROTECTION SIDE ROADS, INTERSECTIONS, AND DRIVEWAYS (TC-10)
6	TRAFFIC CONTROL DETAIL FOR FREEWAY SHOULDER CLOSURES AND PARTIAL RAMP CLOSURE (TC-17)

GENERAL NOTES

- BEFORE STARTING ANY EXCAVATION, THE CONTRACTOR SHALL CALL "J.U.L.I.E" AT (800) 892-0123 OR 811 FOR FIELD LOCATIONS OF BURIED ELECTRIC, TELEPHONE AND GAS UTILITIES. (48 HOUR NOTIFICATION IS REQUIRED).
- THE CONTRACTOR WILL NOT BE ALLOWED TO SET UP A YARD OR FIELD OFFICE ON STATE PROPERTY WITHOUT WRITTEN PERMISSION FROM THE DEPARTMENT.
- IT SHALL BE THE CONTRACTOR'S RESPONSIBILITY TO VERIFY ALL CONDITIONS EXISTING IN THE FIELD PRIOR TO STARTING WORK ORDERS.
- THE CONTRACTOR SHALL CONTACT DISTRICT ONE TRAFFIC CONTROL SUPERVISOR AT (847) 705-4470 A MINIMUM OF 72 HOURS IN ADVANCE OF BEGINNING WORK.
- THE CONTRACTOR SHALL REQUEST AND GAIN APPROVAL FROM THE ILLINOIS DEPARTMENT OF TRANSPORTATION'S EXPRESSWAY TRAFFIC OPERATIONS ENGINEER AT WWW.IDOTLCS.COM TWENTY-FOUR (24) HOURS IN ADVANCE OF DAILY LANE, RAMP AND SHOULDER CLOSURES AND 7 DAYS IN ADVANCE OF ALL PERMANENT AND WEEKEND CLOSURES ON ALL FREEWAYS AND/OR EXPRESSWAYS IN DISTRICT ONE. THIS ADVANCE NOTIFICATION IS CALCULATED BASED ON WORKWEEK OF MONDAY THROUGH FRIDAY AND SHALL NOT INCLUDE WEEKENDS OR HOLIDAYS.
- THE CONTRACTOR SHALL BE REQUIRED TO PROVIDE ACCESS TO ABUTTING PROPERTY AT ALL TIMES DURING THE CONSTRUCTION OF THIS PROJECT.
- THE CONTRACTOR SHALL USE CARE IN CONSTRUCTION OPERATIONS NEAR ANY AND ALL EXISTING ITEMS THAT WILL NOT BE REMOVED. ANY DAMAGE DONE TO EXISTING ITEMS BY THE CONTRACTOR SHALL BE REPAIRED AT THE CONTRACTOR'S OWN EXPENSE TO THE SATISFACTION OF THE ENGINEER.
- THE CONTRACTOR SHALL MAINTAIN PEDESTRIAN ACCESS AT ALL TIMES DURING CONSTRUCTION.
- DURING CONSTRUCTION OPERATIONS, WHEN ANY LOOSE MATERIAL IS DEPOSITED IN THE FLOW LINE OF DITCHES, GUTTERS, OR DRAINAGE STRUCTURES SO THAT THE NATURAL FLOW OF WATER IS OBSTRUCTED, THE MATERIAL SHALL BE REMOVED AT THE CLOSE OF EACH WORKING DAY. THIS WORK IS CONSIDERED AS PART OF CLEAN-UP.
- THE CONTRACTOR SHALL ADHERE TO ARTICLE 107.23 OF THE CURRENT IDOT STANDARD SPECIFICATIONS BOOK.
- WHEN HERBICIDE WORK IS SPECIFIED AND AUTHORIZED, THE CONTRACTOR SHALL HAVE A LICENSED APPLICATOR ON THE WORK SITE TO PERFORM SAID WORK UNDER THE DIRECT SUPERVISION OF THE RESIDENT ENGINEER.
- SITE CLEAN-UP SHALL BE PERFORMED ON A DAILY BASIS, SIDEWALKS, PARKING LOTS, ROADWAYS, ETC. SHALL BE KEPT CLEAN AT ALL TIMES.
- CONTRACTOR'S STAFF SHALL MEET ALL THE REQUIREMENTS AS SPECIFIED IN THE SPECIAL PROVISIONS.
- CONTRACTOR'S EQUIPMENT SHALL MEET ALL THE REQUIREMENTS AS SPECIFIED IN THE SPECIAL PROVISIONS.

HIGHWAY STANDARDS

STANDARD NO.	DESCRIPTION
701001-02	OFF-ROAD OPERATIONS, 2L, 2W, MORE THAN 15' AWAY
701006-05	OFF-ROAD OPERATIONS, 2L, 2W, 15' TO 24" FROM PAVEMENT
701101-05	OFF-ROAD OPERATIONS, MULTILANE, 15' TO 24" FROM PAVEMENT EDGE
701106-02	OFF-ROAD OPERATIONS, MULTILANE, MORE THAN 15' AWAY
701201-05	LANE CLOSURE, 2L, 2W, DAY ONLY, FOR SPEEDS \geq 45 MPH
701311-03	LANE CLOSURE, 2L, 2W, MOVING OPERATIONS - DAY ONLY
701426-09	LANE CLOSURE, MULTILANE, DAY OPERATION ONLY, FOR SPEEDS \geq 45 MPH
701427-05	LANE CLOSURE, MULTILANE, INTERMITTENT OR MOVING OPERATIONS, FOR SPEEDS \leq 40 MPH
701602-10	URBAN LANE CLOSURE, MULTILANE, 2W WITH BI-DIRECTIONAL LEFT TURN LANE
701606-10	URBAN SINGLE LANE CLOSURE, MULTILANE, 2W WITH MOUNTABLE MEDIAN
701611-01	URBAN HALF CLOSURE, MULTILANE, 2W WITH MOUNTABLE MEDIAN
701701-10	URBAN LANE CLOSURE, MULTILANE INTERSECTION
701801-06	SIDEWALK, CORNER OR CROSSWALK CLOSURE
701901-10	TRAFFIC CONTROL DEVICES

MODEL: Ferret; FILE NAME: P:\Users\jldot\Documents\DOT_Offices\District_1\Projects\ID103525\CADD\Tables\Structures\ID103525_sht_index.dgn

USER NAME = melissa.del_rario	DESIGNED -	REVISED -
	DRAWN -	REVISED -
PLOT SCALE = 100.0665' / in.	CHECKED -	REVISED -
PLOT DATE = 10/22/2024	DATE -	REVISED -

**STATE OF ILLINOIS
DEPARTMENT OF TRANSPORTATION**

**ECOLOGICAL LANDSCAPE RESTORATION
INDEX OF SHEETS, HIGHWAY STANDARDS, & GENERAL NOTES**

SCALE: SHEET OF SHEETS STA. TO STA.

F.A.* RTE.	SECTION	COUNTY	TOTAL SHEETS	SHEET NO.
VAR	2024-1013-LS	VARIOUS		2
CONTRACT NO. 62X51			ILLINOIS FED. AID PROJECT	

DESCRIPTION	UNIT	TOTAL QUANTITIES	LOCATIONS											DISTRICT ONE	
			MCHENRY	LAKE	KANE	CENTRAL COOK	SOUTH COOK		WILL						
			IL 31 (IL 62 TO N. MAIN ST) IN ALGONQUIN	IL 132 (MUNN RD TO DEARPATH DRIVE) IN LINDENHURST	IL 47 AT MAIN ST IN BLACKBERRY TOWNSHIP	I-55 AT DUSABLE LAKE SHORE DRIVE IN CHICAGO	I-57 SB AT SAUK TRAIL IN RICHTON PARK	I-57 NB AT SAUK TRAIL IN RICHTON PARK	I-57 SB REST AREA IN MONEE	I-57 NB REST AREA IN MONEE	I-55 AT WEBER RD IN BOLINGBROOK/ ROMEIOVILLE	I-80 AT US 30 IN NEW LENOX	US 6 AT MARLEY CREEK IN MOKENA		AS NEEDED
WEED CONTROL, NATIVE LANDSCAPE ENHANCEMENT	ACRE	70													
MOWING	ACRE	11													
MOWING (SPECIAL)	ACRE	22													
INTERSEEDING, CLASS 4 (MODIFIED)	ACRE	4													
INTERSEEDING, CLASS 4A (MODIFIED)	ACRE	3													
SEEDING, CLASS 2A	ACRE	0.5													
NITROGEN FERTILIZER NUTRIENT	POUND	45													
PHOSPHORUS FERTILIZER NUTRIENT	POUND	45													
POTASSIUM FERTILIZER NUTRIENT	POUND	45													
EROSION CONTROL BLANKET	SQ YD	2420													
SELECTIVE MOWING STAKES	EACH	18													

NOTE: ALL LISTED PAY ITEMS WILL BE SPECIFIED AND UTILIZED BY THE RESIDENT ENGINEER AFTER A FIELD REVIEW HAS BEEN CONDUCTED

MODEL: Default
 FILE NAME: \\hillsboro-ws020117.com\PWDOT\Documents\DOT_Offices\District 1\Projects\103225\CADD\GIS\Structure\103225-sh-hb-ar-fscg.dwg

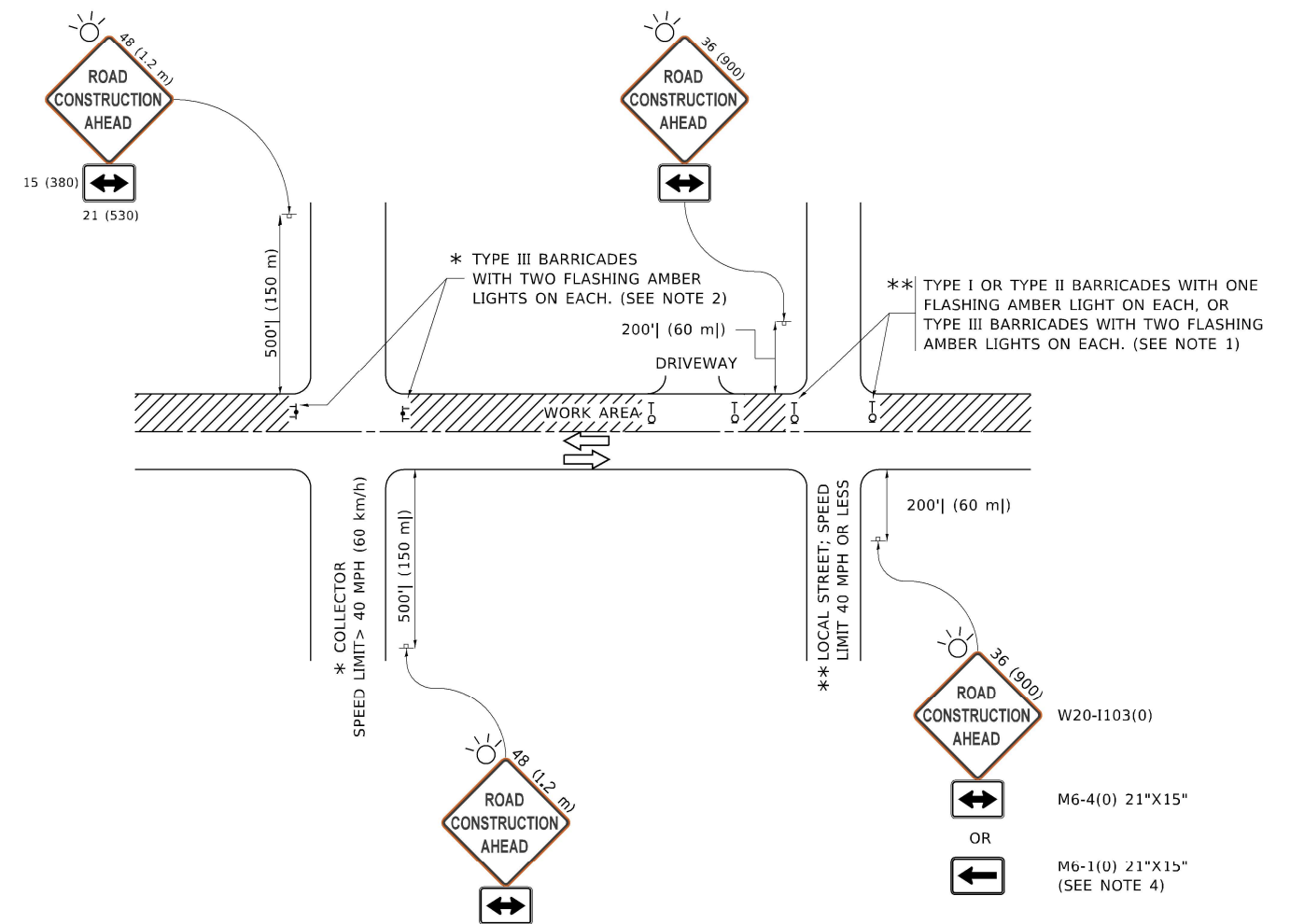
USER NAME = melissa.delrosario	DESIGNED -	REVISED -
	DRAWN -	REVISED -
PLOT SCALE = 100.1153' / in.	CHECKED -	REVISED -
PLOT DATE = 10/22/2024	DATE -	REVISED -

STATE OF ILLINOIS
DEPARTMENT OF TRANSPORTATION

ECOLOGICAL LANDSCAPE RESTORATION
LOCATIONS

SCALE: SHEET OF SHEETS STA. TO STA.

F.A. RTE.	SECTION	COUNTY	TOTAL SHEETS	SHEET NO.
VAR	2024-1013-L5	VARIOUS		4
CONTRACT NO. 62X51			ILLINOIS FED. AID PROJECT	



NOTES:

- SIDE ROAD WITH A SPEED LIMIT OF 40 MPH (60 km/h) OR LESS AS SHOWN ON THE DRAWING AND AS DIRECTED BY THE ENGINEER:
 - ONE "ROAD CONSTRUCTION AHEAD" SIGN 36 x 36 (900x900) WITH A FLASHER MOUNTED ON IT APPROXIMATELY 200' (60 m) IN ADVANCE OF THE MAIN ROUTE.
 - THE CLOSED PORTION OF THE MAIN ROUTE SHALL BE PROTECTED BY BLOCKING WITH TYPE I, TYPE II OR TYPE III BARRICADES, 1/3 OF THE CROSS SECTION OF THE CLOSED PORTION.
- SIDE ROAD WITH A SPEED LIMIT GREATER THAN 40 MPH (60 km/h) AS SHOWN ON THE DRAWING AND AS DIRECTED BY THE ENGINEER:
 - ONE "ROAD CONSTRUCTION AHEAD" SIGN 48 x 48 (1.2 m x 1.2 m) WITH A FLASHER MOUNTED ON IT APPROXIMATELY 500' (150 m) IN ADVANCE OF THE MAIN ROUTE.
 - THE CLOSED PORTION OF THE MAIN ROUTE SHALL BE PROTECTED BY BLOCKING WITH TYPE III BARRICADES, 1/2 OF THE CROSS SECTION OF THE CLOSED PORTION.
- CONES MAY BE SUBSTITUTED FOR BARRICADES OR DRUMS AT HALF THE SPACING DURING DAY OPERATIONS. CONES SHALL BE A MINIMUM OF 28 (710) IN HEIGHT.
- WHEN THE SIDE ROAD LIES BETWEEN THE BEGINNING OF THE MAINLINE SIGNING AND THE WORK ZONE, A SINGLE HEADED ARROW (M6-1) SHALL BE USED IN LIEU OF THE DOUBLE HEADED ARROW (M6-4).
- WHEN WORK IS BEING PERFORMED ON A SIDE ROAD OR DRIVEWAY, FOLLOW THE APPLICABLE STANDARD(S). THE DIRECTIONAL ARROW (M6-1 OR M6-4) SHALL BE COVERED OR REMOVED WHEN NO LONGER CONSISTENT WITH THE TRAFFIC CONTROL SET-UP.
- ADVANCE WARNING SIGNS ARE TO BE OMITTED ON DRIVEWAYS UNLESS OTHERWISE SPECIFIED IN THE PLANS OR BY THE ENGINEER.
- THE TRAFFIC CONTROL AND PROTECTION FOR SIDE ROADS, INTERSECTIONS, AND DRIVEWAYS SHALL BE INCLUDED IN THE COST OF SPECIFIED TRAFFIC CONTROL STANDARDS OR ITEMS.

All dimensions are in inches (millimeters) unless otherwise shown.

MODEL: Default
FILE NAME: P:\1108\REBID\NTEG\Illinois.gov\RWIDOT\Documents\DOT_Offices\District 1\Projects\DH51522\24\CAD\Drawn\CAD\sheet\TC-10.dgn

USER NAME = footemj	DESIGNED - L.H.A.	REVISED - A. HOUSEH 10-15-96
PLOT SCALE = 50.0000 ' / in.	CHECKED -	REVISED - T. RAMMACHER 01-06-00
PLOT DATE = 3/4/2019	DATE - 06-89	REVISED - A. SCHUETZE 07-01-13
		REVISED - A. SCHUETZE 09-15-16

**STATE OF ILLINOIS
DEPARTMENT OF TRANSPORTATION**

**TRAFFIC CONTROL AND PROTECTION FOR
SIDE ROADS, INTERSECTIONS, AND DRIVEWAYS**

SCALE: NONE SHEET 1 OF 1 SHEETS STA. TO STA.

F.A. RTE.	SECTION	COUNTY	TOTAL SHEETS	SHEET NO.
VAR	2024-1013-LS	VARIOUS	6	5
TC-10			CONTRACT NO. 62X51	
ILLINOIS FED. AID PROJECT				

