

STATE OF ILLINOIS
DEPARTMENT OF TRANSPORTATION

F.A.S. RTE.	SECTION	COUNTY	TOTAL SHEETS	SHEET NO.
1412	106(SLP-3;CR-1)	HENDERSON	22	3
		ILLINOIS	CONTRACT NO. 68H97	

INDEX OF SHEETS

- 1 COVER SHEET
- 2 GENERAL NOTES
- 3-5 SUMMARY OF QUANTITIES
- 6 SCHEDULE OF QUANTITIES
- 7-8 ALIGNMENT SHEET
- 9 TYPICAL SECTIONS
- 10 MAXIMUM WIDTH SIGNING DETAILS
- 11-12 TRAFFIC CONTROL PLANS
- 13-14 REMOVAL PLAN
- 15-16 SITE PLAN
- 17 BOX CULVERT EXTENSION DETAILS
- 18-22 CROSS SECTIONS

HIGHWAY STANDARDS

000001-08	666001-01	701301-04	704001-08
280001-07	701001-02	701311-03	725001-01
630001-13	701006-05	701321-19	780001-05
630301-09	701201-05	701901-09	782006-01

PROPOSED
HIGHWAY PLANS

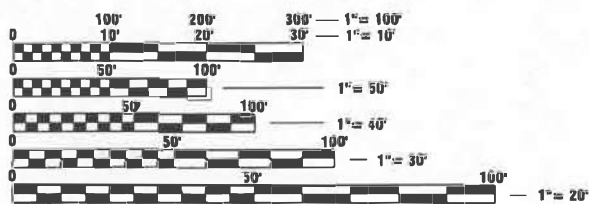
FAS ROUTE 1412 (IL 94)
SECTION 106(SLP-3;CR-1)
SLOPE STABILIZATION AND CULVERT EXTENSION
HENDERSON COUNTY

C-94-016-24
R4W

BEGIN IMPROVEMENT
STA 382 + 70.00

DESIGN DESIGNATION

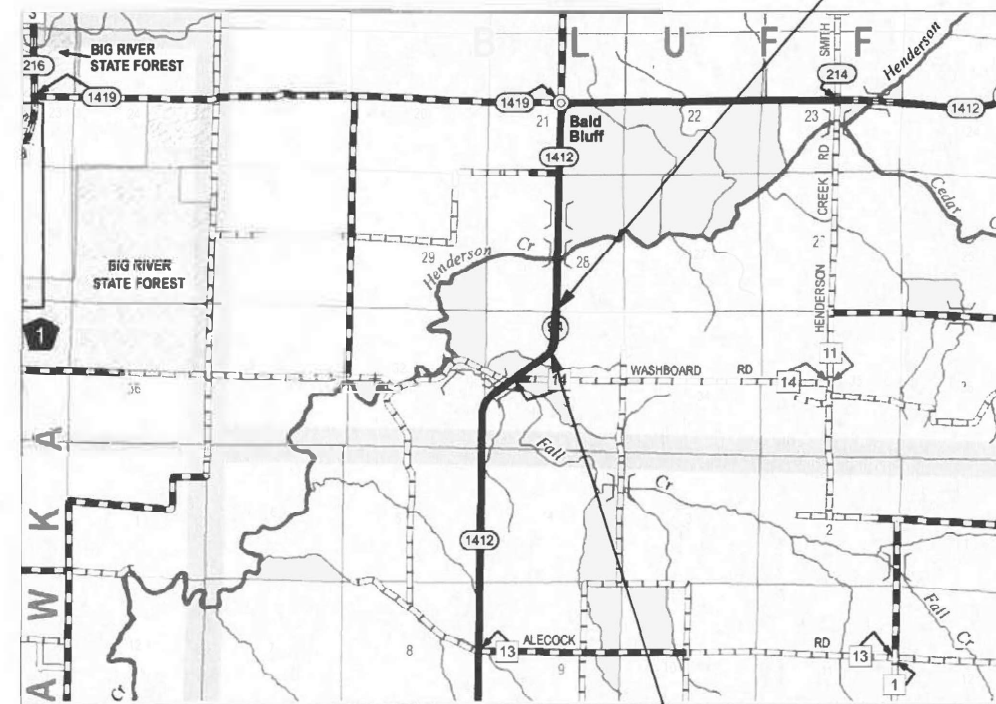
US 94: MAJOR COLLECTOR
ADT: 350 (2021)
SU: 30
MU: 50



FULL SIZE PLANS HAVE BEEN PREPARED USING STANDARD ENGINEERING SCALES. REDUCED SIZED PLANS WILL NOT CONFORM TO STANDARD SCALES. IN MAKING MEASUREMENTS ON REDUCED PLANS, THE ABOVE SCALES MAY BE USED.

J.U.L.I.E.
JOINT UTILITY LOCATION INFORMATION FOR EXCAVATORS
1-800-892-0123
OR 811

PROJECT ENGINEER: BEN TELLEFSON
PROJECT MANAGER: WILL MOSER
CATALOG NO. 036463-00D
CONTRACT NO. 68H97



END IMPROVEMENT
STA 391 + 65.00



PROJECT DESCRIPTION:

SLOPE REPAIR ALONG IL 94

STATE OF ILLINOIS
DEPARTMENT OF TRANSPORTATION

SUBMITTED October 22, 2024
Kristi A. Darnell, P.E.
REGIONAL ENGINEER

December 6, 2024

ENGINEER OF DESIGN AND ENVIRONMENT

December 6, 2024

DIRECTOR OF HIGHWAYS PROJECT IMPLEMENTATION

KLINGNER
& ASSOCIATES, P.C.
Engineers • Architects • Surveyors
www.klingner.com
Galesburg, Illinois
49 North Prairie Street
309.342.4042
Quincy, IL Hannibal, MO
Burlington, IA Pella, IA Columbia, MO
Davenport, IA Carbondale, IL
DESIGN FIRM NO. 184-2738

PRINTED BY THE AUTHORITY
OF THE STATE OF ILLINOIS

MARK C. LEE DATE
REGISTERED PROFESSIONAL ENGINEER
STATE OF ILLINOIS NO. 062-060864
LICENSE EXPIRES NOVEMBER 30, 2025

GROSS LENGTH = 895 FT. = 0.170 MILES
NET LENGTH = 895 FT. = 0.170 MILES

RATES OF APPLICATION TABLE

AGGREGATE (SURFACE, BASE, SUBBASE, OR BACKFILL)	1.60 TON / CU YD
STONE DUMPED RIPRAP	1.50 TON / CU YD

GENERAL NOTES

- THE THICKNESS OF BITUMINOUS MIXTURES SHOWN ON THE PLANS IS THE NOMINAL THICKNESS. DEVIATIONS FROM THE NOMINAL THICKNESS WILL BE PERMITTED WHEN SUCH DEVIATIONS OCCUR DUE TO IRREGULARITIES IN THE EXISTING SURFACE OR BASE ON WHICH THE BITUMINOUS MIXTURE IS PLACED.
- THE CONTRACTOR SHALL PROTECT AND CAREFULLY PRESERVE ALL PROPERTY MARKERS AND MONUMENTS UNTIL THE OWNER, AUTHORIZED AGENT, OR LAND SURVEYOR HAS WITNESSED OR OTHERWISE REFERENCED THEIR LOCATION. WHERE SECTION OR SUB-SECTION MONUMENTS ARE ENCOUNTERED, THE ENGINEER SHALL BE NOTIFIED BEFORE SUCH MONUMENTS ARE REMOVED. THE CONTRACTOR SHALL BE RESPONSIBLE FOR HAVING AN AUTHORIZED SURVEYOR RE-ESTABLISH ANY SECTION OR SUB-SECTION MONUMENTS DESTROYED BY HIS OPERATIONS.
- IN ADDITION TO FIELD SURVEYS, PLAN DIMENSIONS AND DETAILS RELATIVE TO THE EXISTING FACILITIES HAVE BEEN TAKEN FROM EXISTING PLANS AND ARE SUBJECT TO CONSTRUCTION VARIATIONS. IT SHALL BE THE CONTRACTOR'S RESPONSIBILITY TO VERIFY SUCH DIMENSIONS AND DETAILS IN THE FIELD. SUCH VARIATIONS SHALL NOT BE A CAUSE FOR ADDITIONAL COMPENSATION DUE TO A CHANGE IN THE SCOPE OF WORK; HOWEVER, THE CONTRACTOR WILL BE PAID FOR THE QUANTITY ACTUALLY FURNISHED AT THE UNIT PRICE BID FOR THE WORK.
- ANY REFERENCE TO A STANDARD IN THESE PLANS SHALL BE INTERPRETED TO MEAN THE EDITION AS INDICATED BY THE SUB-NUMBER IN THE INDEX OF SHEETS OR THE COPY OF THE STANDARD INCLUDED IN THESE PLANS.
- ANY EXISTING ROAD SIGNS THAT INTERFERE WITH CONSTRUCTION WILL BE REMOVED OR RELOCATED AS DIRECTED BY THE ENGINEER. AFTER THE CONSTRUCTION IS COMPLETED, THE CONTRACTOR WILL REPLACE THE SIGNS AS DIRECTED BY THE ENGINEER. THIS WORK WILL NOT BE PAID SEPARATELY BUT SHALL BE CONSIDERED INCIDENTAL TO THE CONTRACT AND NO COMPENSATION WILL BE ALLOWED.
- SHOULD THE CONTRACTOR REQUEST OLD/EXISTING STRUCTURE PLANS, THEY CAN CONTACT THE PROJECT ENGINEER OR TEAM ENGINEER AS SHOWN ON THE COVER SHEET.
- SAW CUTS REQUIRED FOR REMOVAL ITEMS WILL NOT BE PAID FOR SEPARATELY. THE COST OF THE SAW CUTS WILL BE INCLUDED IN THE RESPECTIVE REMOVAL PAY ITEM.
- THE FOLLOWING MIXTURE REQUIREMENTS ARE APPLICABLE FOR THIS PROJECT:

LOCATION(S):	HMA SURF CSE	SHOULDERS
MIXTURE USE(S):	SHOULDERS TOP LIFT	LOWER LIFTS
AC/PG:	PG 64-22	PG 64-22
DESIGN AIR VOIDS:	4.0% @ N DESIGN=50	4.0% @ N DESIGN=50
MIXTURE COMPOSITION: (GRADATION MIXTURE)	IL 9.5	IL 19.0
FRICTION AGGREGATE	MIX "D"	N/A
QUALITY	QA/QC	QA/QC
SUB-LOT SIZE	N/A	N/A

ENVIRONMENTAL REVIEWS

PRIOR TO THE USE OF ANY PROPOSED BORROW AREAS, USE AREAS (TEMPORARY ACCESS ROADS, DETOURS, RUN-AROUNDS, ETC.) AND/OR WASTE AREAS, THE CONTRACTOR SHALL FILE THE REQUIRED ENVIRONMENTAL RESOURCE REQUEST SURVEYS ACCORDING TO SECTION 107.22 OF THE STANDARD SPECIFICATIONS. THESE SURVEYS ARE REQUIRED IN ORDER FOR THE DEPARTMENT TO CONDUCT CULTURAL AND BIOLOGICAL RESOURCE SURVEYS FOR THE PROPOSED SITE.

THE REQUIRED ENVIRONMENTAL RESOURCE DOCUMENTATION SHALL INCLUDE THE FOLLOWING:

- * BDE FORM 2289 (BORROW SITE REVIEW)
- * BDE FORM 2290 (WASTE/USE AREA REVIEW)
- * A LOCATION MAP SHOWING THE SIZE LIMITS AND LOCATION OF THE USE AREA
- * COLOR PHOTOGRAPHS DEPICTING THE USE AREA
- * BORROW AREA ENTRY AGREEMENT FORM - D4 PI0101

PRIOR TO ANY WASTE MATERIALS BEING REMOVED FROM THE CONSTRUCTION SITE THE REQUIRED ENVIRONMENTAL RESOURCE SURVEYS SHALL BE OBTAINED AND FILLED BY THE CONTRACTOR. EXCESS WASTE PRODUCTS REMOVED FROM THE CONSTRUCTION SITE SHALL BE DISPOSED OF AS REQUIRED IN SECTION 202.03 OF THE STANDARD SPECIFICATIONS.

ANY PROTRUDING METAL BARS SHALL BE REMOVED PRIOR TO THE DISPOSAL OF BROKEN CONCRETE AT APPROVED DISPOSAL SITES.

PLEASE NOTE THAT A MINIMUM OF FOUR WEEKS SHALL BE ALLOWED FOR THE DISTRICT TO OBTAIN THE REQUIRED WASTE SITE ENVIRONMENTAL CLEARANCES AND SIX WEEKS FOR THE REQUIRED BORROW SITE ENVIRONMENTAL CLEARANCES.

MODEL: Default
 FILE NAME: P:\Calculation\2\filed13081\DOT - DIST 4 - PTB 201-033\Work Order 08 - FY 2023 Stone Repair\18_Transportation\Location 2_Centerville.dgn

KLINGNER & ASSOCIATES, P.C.
 Engineers • Architects • Surveyors
 616 N. 24TH ST. QUINCY, ILLINOIS 62301 217.223.3670
 STATE OF ILLINOIS DESIGN FIRM NO. 184-2738

USER NAME = aschaefer	DESIGNED - AMS	REVISED -
PLOT SCALE = 40,0003 * / in.	DRAWN - MAW	REVISED -
PLOT DATE = 4/7/2024	CHECKED - MCL	REVISED -
	DATE -	REVISED -

**STATE OF ILLINOIS
DEPARTMENT OF TRANSPORTATION**

**F.A.S. ROUTE 1412 (IL 94)
GENERAL NOTES**

SCALE: NONE SHEET 1 OF 1 SHEETS STA. N/A TO STA. N/A

F.A.S. RTE.	SECTION	COUNTY	TOTAL SHEETS	SHEET NO.
1412	106(SLP-3;CR-1)	HENDERSON	22	2
CONTRACT NO. 68H97			ILLINOIS FED. AID PROJECT	

CODE NO.	ITEM	UNIT	TOTAL QUANTITY	CONSTRUCTION CODE							
				HENDERSON COUNTY							
				100% STATE							
				0005 RURAL							
20100500	TREE REMOVAL, ACRES	ACRE	0.6	0.6							
20200100	EARTH EXCAVATION	CU YD	340	340							
50200450	REMOVAL AND DISPOSAL OF UNSUITABLE MATERIAL FOR STRUCTURES	CU YD	9	9							
20400800	FURNISHED EXCAVATION	CU YD	590	590							
20700110	POROUS GRANULAR EMBANKMENT	TON	16	16							
28000400	PERIMETER EROSION BARRIER	FOOT	400	400							
28100207	STONE RIPRAP, CLASS A4	TON	1830	1830							
28200200	FILTER FABRIC	SQ YD	2745	2745							
31101000	SUBBASE GRANULAR MATERIAL, TYPE B	TON	56	56							
44004250	PAVED SHOULDER REMOVAL	SQ YD	167	167							
48203029	HOT-MIX ASPHALT SHOULDERS, 8"	SQ YD	260	260							
50800105	REINFORCEMENT BARS	POUND	24	24							
54001001	BOX CULVERT END SECTIONS, CULVERT NO. 1	EACH	1	1							

MODEL: Default
 FILE NAME: P:\Galesburg\21files\213061.DOT - DIST 4 - PTB 201-033\Work Order 08 - FT 2023 Slope Repairs\18 Transportation\Location 2\CADD Sheets\003 005-Location 2 Summary.dgn

KLINGNER & ASSOCIATES, P.C.
 Engineers • Architects • Surveyors
 616 N. 24TH ST. QUINCY, ILLINOIS 62001 217.223.3670
 STATE OF ILLINOIS DESIGN FIRM NO. 164-2738

USER NAME = aschafer	DESIGNED - AMS	REVISED -
DRAWN - MAW	REVISED -	
PLOT SCALE = 40.0000' / in.	CHECKED - MCL	REVISED -
P. DT. DATE = 4/7/2024	DATE -	REVISED -

STATE OF ILLINOIS
DEPARTMENT OF TRANSPORTATION

F.A.S. ROUTE 1412 (IL 94)
SUMMARY OF QUANTITIES
 SCALE: NONE SHEET 1 OF 3 SHEETS STA. N/A TO STA. N/A

F.A.S. RTE.	SECTION	COUNTY	TOTAL SHEETS	SHEET NO.
1412	106(SLP-3;CR-1)	HENDERSON	22	3
ILLINOIS FED. AID PROJECT			CONTRACT NO. 68H97	

MODEL: Default
 FILE NAME: P:\Caleburg\21\110213081\DOT - DIST - 4 - PTB 201-023\Work Order 08 - FY 2023 Slope Repair\18_Transportation\Location 2\CADD_Sheets\03_005-Location 2_Summary.dgn

CODE NO.	ITEM	UNIT	TOTAL QUANTITY	CONSTRUCTION CODE								
				HENDERSON COUNTY								
				100% STATE								
				0005 RURAL								
54002020	EXPANSION BOLTS 3/4 INCH	EACH	9	9								
54010303	PRECAST CONCRETE BOX CULVERTS 3'X3'	FOOT	10	10								
54248510	CONCRETE COLLAR	CU YD	0.6	0.6								
* 63000003	STEEL PLATE BEAM GUARDRAIL, TYPE A, 9 FOOT POSTS	FOOT	800	800								
* 63100167	TRAFFIC BARRIER TERMINAL, TYPE 1 (SPECIAL) TANGENT	EACH	2	2								
63200310	GUARDRAIL REMOVAL	FOOT	889	889								
67100100	MOBILIZATION	L SUM	1	1								
70100450	TRAFFIC CONTROL AND PROTECTION, STANDARD 701201	L SUM	1	1								
70103815	TRAFFIC CONTROL SURVEILLANCE	CAL DA	5	5								
70106500	TEMPORARY BRIDGE TRAFFIC SIGNALS	EACH	1	1								
70106700	TEMPORARY RUMBLE STRIPS	EACH	8	8								
70107025	CHANGEABLE MESSAGE SIGN	CAL DA	14	14								
70300100	SHORT TERM PAVEMENT MARKING	FOOT	3536	3536								
70300150	SHORT TERM PAVEMENT MARKING REMOVAL	SQ FT	1812	1812								

*= SPECIALTY ITEM



USER NAME = aschafer	DESIGNED - AMS	REVISED -
	DRAWN - MAW	REVISED -
PLOT SCALE = 40.0000' / in.	CHECKED - MCL	REVISED -
P DT DATE = 4 // 2024	DATE -	REVISED -

**STATE OF ILLINOIS
 DEPARTMENT OF TRANSPORTATION**

**F.A.S. ROUTE 1412 (IL 94)
 SUMMARY OF QUANTITIES**

SCALE: NONE SHEET 2 OF 3 SHEETS STA. N/A TO STA. N/A

F.A.S. RTE.	SECTION	COUNTY	TOTAL SHEETS	SHEET NO.
1412	106(SLP-3,CR-1)	HENDERSON	22	4
CONTRACT NO. 68H97			ILLINOIS FED. AID PROJECT	

MODEL: Default
 FILE NAME: P:\Caleburg\211ed13081\DOT - DIST 4 - PTB 201-023\Work Order 08 - FY 2023 Slope Repair\18_Transportation\Location 2\CADD_Sheets\003_005_Location 2_Summary.dgn

CODE NO.	ITEM	UNIT	TOTAL QUANTITY	CONSTRUCTION CODE							
				HENDERSON COUNTY							
				100% STATE							
				0005 RURAL							
70307120	TEMPORARY PAVEMENT MARKING - LINE 4"- TYPE IV TAPE	FOOT	1768	1768							
70307210	TEMPORARY PAVEMENT MARKING - LINE 24"- TYPE IV TAPE	FOOT	22	22							
70400100	TEMPORARY CONCRETE BARRIER	FOOT	575	575							
70400125	PINNING TEMPORARY CONCRETE BARRIER	EACH	132	132							
70600250	IMPACT ATTENUATORS, TEMPORARY (NON-REDIRECTIVE), TEST LEVEL 3	EACH	2	2							
* 72501000	TERMINAL MARKER - DIRECT APPLIED	EACH	2	2							
* 78001110	PAINT PAVEMENT MARKING - LINE 4"	FOOT	3536	3536							
* 78200005	GUARDRAIL REFLECTORS, TYPE A	EACH	10	10							
78300202	PAVEMENT MARKING REMOVAL - WATER BLASTING	SQ FT	737	737							
X0326899	SOLAR-POWERED FLASHING BEACON ASSEMBLY (COMPLETE)	EACH	2	2							
X6650202	WOVEN WIRE FENCE REMOVAL	FOOT	50	50							
X7010202	TRAFFIC CONTROL AND PROTECTION, STANDARD 701321 (SPECIAL)	EACH	1	1							
Z0013798	CONSTRUCTION LAYOUT	L SUM	1	1							
* Z0054517	ROCK FILL - FOUNDATION	TON	16	16							

*= SPECIALTY ITEM



USER NAME = aschafer	DESIGNED - AMS	REVISED -
	DRAWN - MAW	REVISED -
PLOT SCALE = 40.0000' / in.	CHECKED - MCL	REVISED -
P DT DATE = 4 // 2024	DATE -	REVISED -

STATE OF ILLINOIS
DEPARTMENT OF TRANSPORTATION

F.A.S. ROUTE 1412 (IL 94)
SUMMARY OF QUANTITIES

SCALE: NONE SHEET 3 OF 3 SHEETS STA. N/A TO STA. N/A

F.A.S. RTE.	SECTION	COUNTY	TOTAL SHEETS	SHEET NO.
1412	106(SLP-3;CR-1)	HENDERSON	22	5
CONTRACT NO. 68H97			ILLINOIS FED. AID PROJECT	

TREE REMOVAL, ACRES

20100500

STATION TO STATION	SIDE	WIDTH (FT)	ACRE
IL 94			
387+75.00 TO 391+50.00	RT	VARIES	0.57
TOTAL			0.57
USE			0.60

HOT-MIX ASPHALT SHOULDERS, 8"

48203029

STATION TO STATION	SIDE	WIDTH (FT)	SQ YD
IL 94			
387+75.00 TO 391+65.00	RT	6.0	260.0
TOTAL			260.0
USE			260

PAVEMENT MARKING REMOVAL - WATER BLASTING

78300202

STATION TO STATION	SIDE	DESCRIPTION	SQ FT
IL 94			
385+53.00 TO 394+37.00	CL	NO - PASSING	736.7
TOTAL			736.7
USE			737

EARTH EXCAVATION SCHEDULE

STATION TO STATION	SIDE	20200100 EARTH EXCAVATION	EARTH EXCAVATION ADJUSTED (25%)	EMBANKMENT	20400800 FURNISHED EXCAVATION	CU YD	
IL 94							
387+75.00 TO 391+50.00	RT	338	254	841	587		
TOTALS		338	254	841	587		
USE		340	255	845	590		

GUARDRAIL REMOVAL

63200310

STATION TO STATION	SIDE	FOOT
IL 94		
382+75.84 TO 391+64.40	RT	888.56
TOTAL		888.56
USE		889

TRAFFIC CONTROL AND PROTECTION

LOCATION	70400100			70600250		70400125	
	TEMP CONCRETE BARRIER	IMPACT ATTENUATORS TEMP NR, TL3	PINNING TEMPORARY CONCRETE BARRIER				
TRAFFIC CONTROL STAGE	FOOT	EACH	EACH				
IL 94 (STAGE 1)							
386+83.00 TO 392+58.00	575	2	132				
TOTALS	575	2	132				

TEMPORARY PAVEMENT MARKING - LINE 4"- TYPE IV TAPE

70307120

STATION TO STATION	SIDE	DESCRIPTION	WHITE FOOT
IL 94 (STAGE 1)			
385+53.00 TO 394+37.00	LT	EDGE LINE	884.0
385+53.00 TO 394+37.00	RT	EDGE LINE	884.0
TOTAL			1768.0
USE			1768

TEMPORARY PAVEMENT MARKING - LINE 24" - TYPE IV TAPE

70307210

STATION	SIDE	DESCRIPTION	WHITE FOOT
IL 94 (STAGE 1)			
385+53.00 TO 394+37.00	RT	STOP LINE	11
394+37.00 TO 394+37.00	LT	STOP LINE	11
TOTAL			22
USE			22

RIPRAP SCHEDULE

28100207 28200200

STATION TO STATION	SIDE	WIDTH (FT)	STONE RIPRAP, CLASS A4	FILTER FABRIC
			TON	SQ YD
IL 94				
387+75.00 TO 391+50.00	RT	VARIES	1829.4	2744.1
TOTALS			1829.4	2744.1
USE			1830	2745

GUARDRAIL SCHEDULE

63000003 63100167 78200005 72501000

STATION TO STATION	SIDE	SPBGR TYPE A 9' POSTS	TRAF BARRIER TERMINAL TYPE 1 (SPECIAL) TANGENT	GUARDRAIL REFLECTORS TYPE A	TERMINAL MARKERS DIRECT APPLIED
		FOOT	EACH	EACH	
IL 94					
382+70.00 TO 391+70.00	RT	800.0	2	10	2
TOTALS		800	2	10	2

SHORT TERM PAVEMENT MARKING REMOVAL

70300150

STATION TO STATION	SIDE	DESCRIPTION	WHITE SQ FT
IL 94 (STAGE 1)			
385+53.00 TO 394+37.00	LT	EDGE LINE	294.7
385+53.00 TO 394+37.00	RT	EDGE LINE	294.7
385+53.00 TO 394+37.00	RT	STOP BAR	22.0
394+37.00 TO 394+37.00	LT	STOP BAR	22.0
IL 94 (SHORT TERM)			
385+53.00 TO 394+37.00	LT	EDGE LINE	294.7
385+53.00 TO 394+37.00	RT	EDGE LINE	294.7
385+53.00 TO 394+37.00	CL	NO PASSING	589.3
TOTAL			1812.1
USE			1812

SUBBASE GRANULAR MATERIAL, TYPE B

31101000

STATION TO STATION	SIDE	WIDTH (FT)	TON
IL 94			
387+75.00 TO 391+65.00	RT	7.2	55.5
TOTAL			55.5
USE			56

SHORT TERM PAVEMENT MARKING

70300100

STATION TO STATION	SIDE	DESCRIPTION	WHITE	YELLOW
			FOOT	
IL 94				
385+53.00 TO 394+37.00	RT	EDGE	884	
385+53.00 TO 394+37.00	LT	EDGE	884	
385+53.00 TO 394+37.00	CL	NO - PASSING		1768.0
TOTAL			1768	1768.0
USE			3536	

WOVEN WIRE FENCE REMOVAL

X6650202

STATION TO STATION	SIDE	FOOT
IL 94		
389+00.00 TO 389+50.00	RT	50
TOTAL		50

MISCELLANEOUS PAVING ITEMS SCHEDULE

NUMBER	ITEM	UNIT	TOTAL
28000400	PERIMETER EROSION BARRIER	FOOT	400

THIS SCHEDULE INCLUDES ESTIMATED QUANTITIES. THEY MAY BE REDUCED, INCREASED, OR DELETED BY THE ENGINEER BASED ON ACTUAL FIELD CONDITIONS. NO WORK INVOLVING THESE ESTIMATED QUANTITIES SHALL BE PERFORMED WITHOUT THE DIRECTION AND APPROVAL OF THE ENGINEER.

PAINT PAVEMENT MARKING - LINE 4"

78001110

STATION TO STATION	SIDE	DESCRIPTION	WHITE	YELLOW
			FOOT	
IL 94				
385+53.00 TO 394+37.00	RT	EDGE	884	
385+53.00 TO 394+37.00	LT	EDGE	884	
385+53.00 TO 394+37.00	CL	NO - PASSING		1768.0
TOTAL			1768	1768.0
USE			3536	

TEMPORARY RUMBLE STRIPS

70106700

STATION	SIDE	EACH
IL 94		
378+53.00 TO 378+53.00	RT	1
373+53.00 TO 373+53.00	RT	1
368+53.00 TO 368+53.00	RT	1
363+53.00 TO 363+53.00	RT	1
401+37.00 TO 401+37.00	LT	1
406+37.00 TO 406+37.00	LT	1
411+37.00 TO 411+37.00	LT	1
416+37.00 TO 416+37.00	LT	1
TOTAL		8
USE		8

BOX CULVERT EXTENSION

54001001 54248510 50800105 54248510 21001000 20054517 54010303 50200450 20700110

LOCATION	SIDE	BOX CULVERT END SECTIONS, CULVERT NO. 1	EXPANSION BOLTS 3/4 INCH	REINFORCEMENT BARS	CONCRETE COLLAR	GEOTECHNICAL FABRIC FOR GROUND STABILIZAION	* ROCK FILL FOUNDATION	PRECAST CONCRETE BOX CULVERTS 3'X3'	* REMOVAL AND DISPOSAL OF UNSUITABLE MATERIAL	POROUS GRANULAR EMBANKMENT
391+00.00 TO 391+00.00	RT	1	9	24	0.6	11.7	15.6	10	8.3	16.0
TOTALS		1	9	24	0.6	12	16	10	9	16

* INCLUDES ESTIMATED QUANTITIES. THEY MAY BE REDUCED, INCREASED, OR DELETED BY THE ENGINEER BASED ON ACTUAL FIELD CONDITIONS. NO WORK INVOLVING THESE ESTIMATED QUANTITIES SHALL BE PERFORMED WITHOUT THE DIRECTION AND APPROVAL OF THE ENGINEER.

SOLAR - POWERED FLASHING BEACON
ASSEMBLY (COMPLETE)

X0326899

STATION	SIDE	EACH
IL 94		
363+53.00 TO 363+53.00	RT	1
416+37.00 TO 416+37.00	LT	1
TOTAL		2
USE		2

MODEL - Defaul
FILE NAME - P:\Caleburg\2\filed13081\DOT - DIST - 4 - .PTB 201-023\Work Order 08 - FY 2023 Slope Repair\18 Transportation\Location 2\CADD Sheets\006-Location 2 - Schedule.dgn



USER NAME = aschafer	DESIGNED - AMS	REVISED -
PLOT SCALE = 40.0000 ' / in.	DRAWN - MAW	REVISED -
P DT D AE = 4/7/2024	CHECKED - MCL	REVISED -
	DATE -	REVISED -

STATE OF ILLINOIS
DEPARTMENT OF TRANSPORTATION

F.A.S. ROUTE 1412 (IL 94)
SCHEDULE OF QUANTITIES

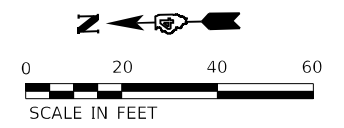
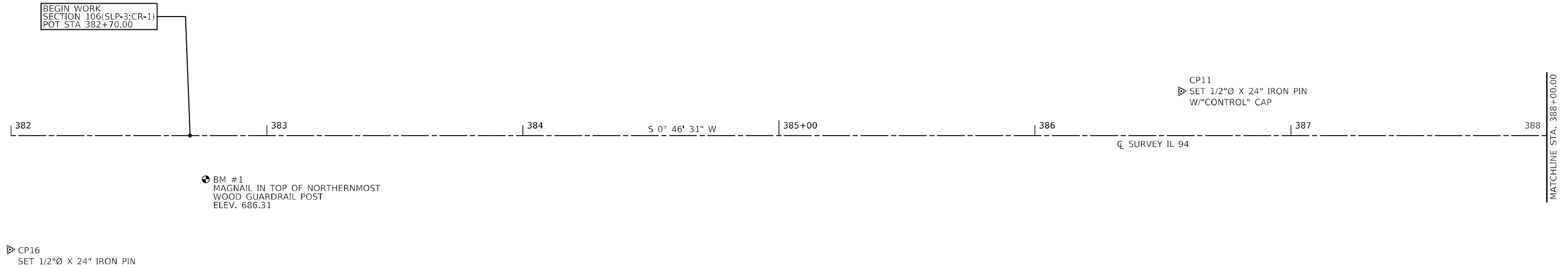
SCALE: NONE SHEET 1 OF 1 SHEETS STA. N/A TO STA. N/A

F.A.S. RTE.	SECTION	COUNTY	TOTAL SHEETS	SHEET NO.
1412	106(SLP-3;CR-1)	HENDERSON	22	6
CONTRACT NO. 68H97				
ILLINOIS FED. AID PROJECT				

REV 12-5-2024

ALIGNMENT COORDINATES - IL 94			
	STATION	N	E
POT	382+70.00	1,577,310.5493	2,106,934.7988
PC	389+33.82	1,576,646.8704	2,106,921.1111
POT	391+50.00	1,576,432.8541	2,106,893.6697
PI	393+36.36	1,576,244.4172	2,106,912.8107

BENCHMARK AND CONTROL POINT COORDINATES					
	STATION	OFFSET	N	E	ELEVATION
CP11	386+57.18	17.32' LT	1,576,923.0900	2,106,944.1300	674.21
CP16	381+99.60	44.50' RT	1,577,381.8500	2,106,891.7600	686.83
BM #1	382+76.16	17.05' RT	1,577,304.7435	2,106,917.6234	686.31



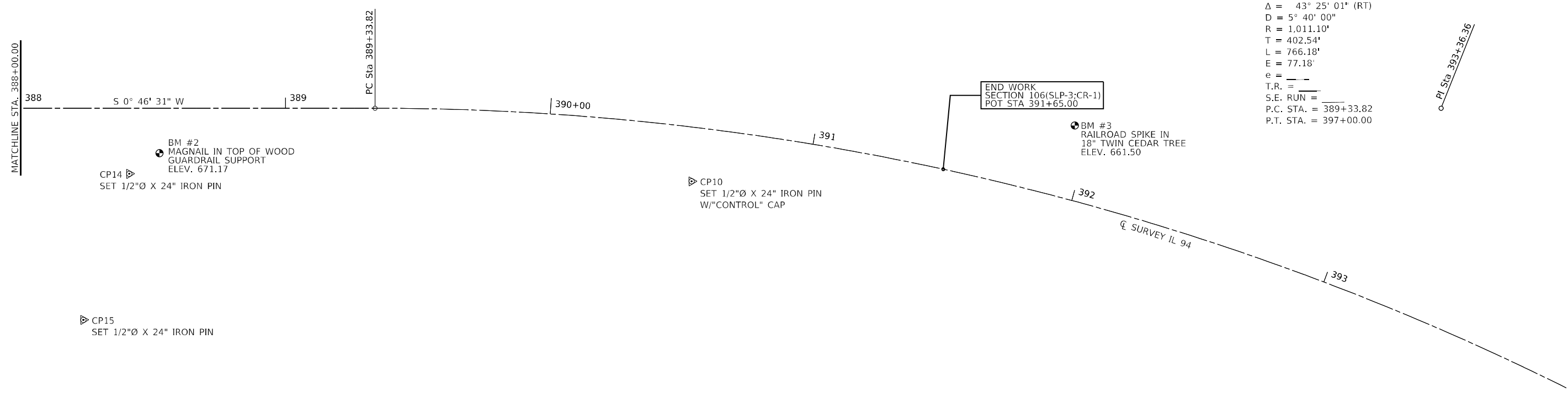
MODEL: D:\p\h\...
 FILE NAME: P:\Caledonia\2116313081\DOT - DIST 4 - PTB 201-023\Work Order 08 - FY 2023 Slope Repair\18_Transportation\Location 2\ICADD_Sheets\007-Location 2_Alignment1.dgn

KLINGNER & ASSOCIATES, P.C. Engineers • Architects • Surveyors <small>616 N. 24TH ST. QUINCY, ILLINOIS 62301 217.223.3670 STATE OF ILLINOIS DESIGN FIRM NO. 184-2738</small>	USER NAME = aschafer	DESIGNED - AMS	REVISED -	STATE OF ILLINOIS DEPARTMENT OF TRANSPORTATION	F.A.S. ROUTE 1412 (IL 94) ALIGNMENT SHEETS	F.A.S. RTE. 1412	SECTION 106(SLP-3;CR-1)	COUNTY HENDERSON	TOTAL SHEETS 22	SHEET NO. 7	
	PLOT SCALE = 40,0000 * / in.	CHECKED - MCL	REVISED -			CONTRACT NO. 68H97					
	PLOT DATE = 4/7/2024	DATE -	REVISED -			ILLINOIS FED. AID PROJECT					

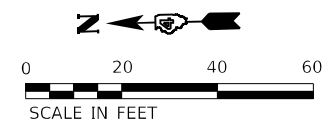
SCALE: 1"=20' SHEET 1 OF 2 SHEETS STA. 382+00.00 TO STA. 388+00.00

ALIGNMENT COORDINATES - IL 94			
	STATION	N	E
POT	382+70.00	1,577,310.5493	2,106,934.7988
PC	389+33.82	1,576,646.8704	2,106,921.1111
POT	391+50.00	1,576,432.8541	2,106,893.6697
PI	393+36.36	1,576,244.4172	2,106,912.8107

BENCHMARK AND CONTROL POINT COORDINATES					
	STATION	OFFSET	N	E	ELEVATION
CP10	390+56.11	20.34' RT	1,576,527.9290	2,106,891.0720	662.37
CP14	388+41.02	24.76' RT	1,576,740.1600	2,106,898.2700	668.29
CP15	388+23.67	79.90' RT	1,576,758.6400	2,106,843.5000	655.47
BM #2	388+52.42	16.99' RT	1,576,728.5991	2,106,905.8066	671.17
BM #3	391+93.86	27.65' LT	1,576,382.8456	2,106,909.1472	661.50



PI STA. = 393+36.36
 $\Delta = 43^\circ 25' 01''$ (RT)
 $D = 5^\circ 40' 00''$
 $R = 1,011.10'$
 $T = 402.54'$
 $L = 766.18'$
 $E = 77.18'$
 $e = \text{---}$
 $T.R. = \text{---}$
 $S.E. RUN = \text{---}$
 $P.C. STA. = 389+33.82$
 $P.T. STA. = 397+00.00$



MODEL: Defaul...
 FILE NAME: P:\Caledburg\2\filed13081\DDOT - DIST - 4 - PTB 201-023\Work Order 08 - FY 2023 Slope Repair\18_Transportation\Location 2_Altimeter2.dgn

KLINGNER & ASSOCIATES, P.C. <small>Engineers • Architects • Surveyors 616 N. 24TH ST. QUINCY, ILLINOIS 62301 217.223.3670 STATE OF ILLINOIS DESIGN FIRM NO. 184-2738</small>	USER NAME = aschaefer	DESIGNED - AMS	REVISED -	STATE OF ILLINOIS DEPARTMENT OF TRANSPORTATION	F.A.S. ROUTE 1412 (IL 94) ALIGNMENT SHEETS	F.A.S. RTE. = 1412	SECTION = 106(SLP-3;CR-1)	COUNTY = HENDERSON	TOTAL SHEETS = 22	SHEET NO. = 8
	PLOT SCALE = 40,0000 * / in.	CHECKED - MCL	REVISED -			SCALE: 1"=20'	SHEET 2 OF 2 SHEETS	STA. 388+00.00 TO STA. 394+00.00	CONTRACT NO. 68H97	
	PLOT DATE = 4/7/2024	DATE -	REVISED -			ILLINOIS FED. AID PROJECT				

LEGEND

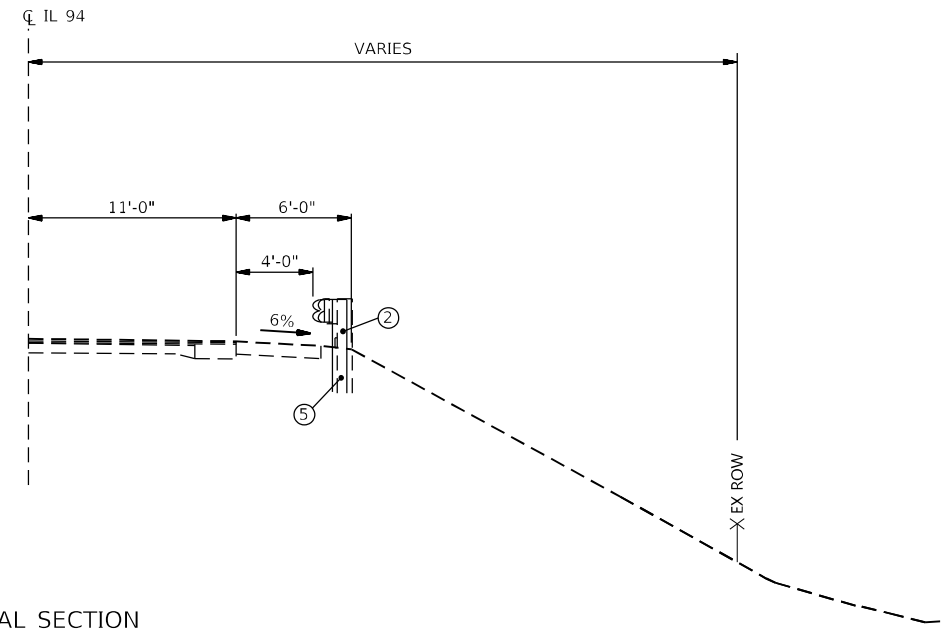
- ① PAVED SHOULDER REMOVAL
(REMOVAL OF EXISTING EROSION CONTROL WOOD PLANK INCLUDED)
- ② GUARDRAIL REMOVAL
- ③ PROPOSED SUBBASE GRANULAR MATERIAL, TYPE B, 4"
- ④ PROPOSED HOT-MIX ASPHALT SHOULDERS, 8"
- ⑤ PROPOSED STEEL PLATE BEAM GUARDRAIL, TYPE A, 9 FT POSTS
(PROPOSED GUARDRAIL TO BE DRIVEN THROUGH HMA SHOULDERS)

GUARDRAIL NOTES

PROPOSED GUARDRAIL
STA. 382+70.00 TO STA. 391+70.00 RT

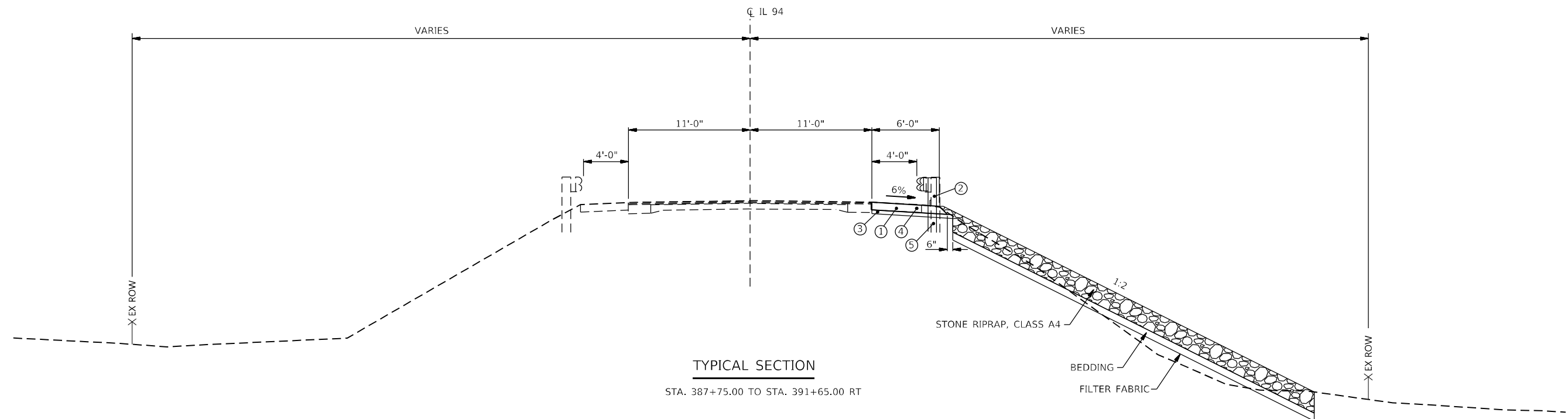
TYPICAL SECTION

STA. 382+70.00 TO STA. 387+75.00 RT



TYPICAL SECTION

STA. 387+75.00 TO STA. 391+65.00 RT



MODEL: Default
 FILE NAME: P:\Caledonia\2116313081\DOT - DIST 4 - PTB 201-023\Work Order 08 - FY 2023 Slope Repair\18_Transportation\Location 2\CADD_Sheets\09-Location 2_Typical.dgn
 STATE OF ILLINOIS DESIGN FIRM NO. 184-2738

KLINGNER & ASSOCIATES, P.C.
 Engineers • Architects • Surveyors
 616 N. 24TH ST. QUINCY, ILLINOIS 62301-2172, 223-3670

USER NAME = aschaefer
 PLOT SCALE = 20,0000 * / in.
 PLOT DATE = 4/7/2024

DESIGNED - AMS
 DRAWN - MAW
 CHECKED - MCL
 DATE -

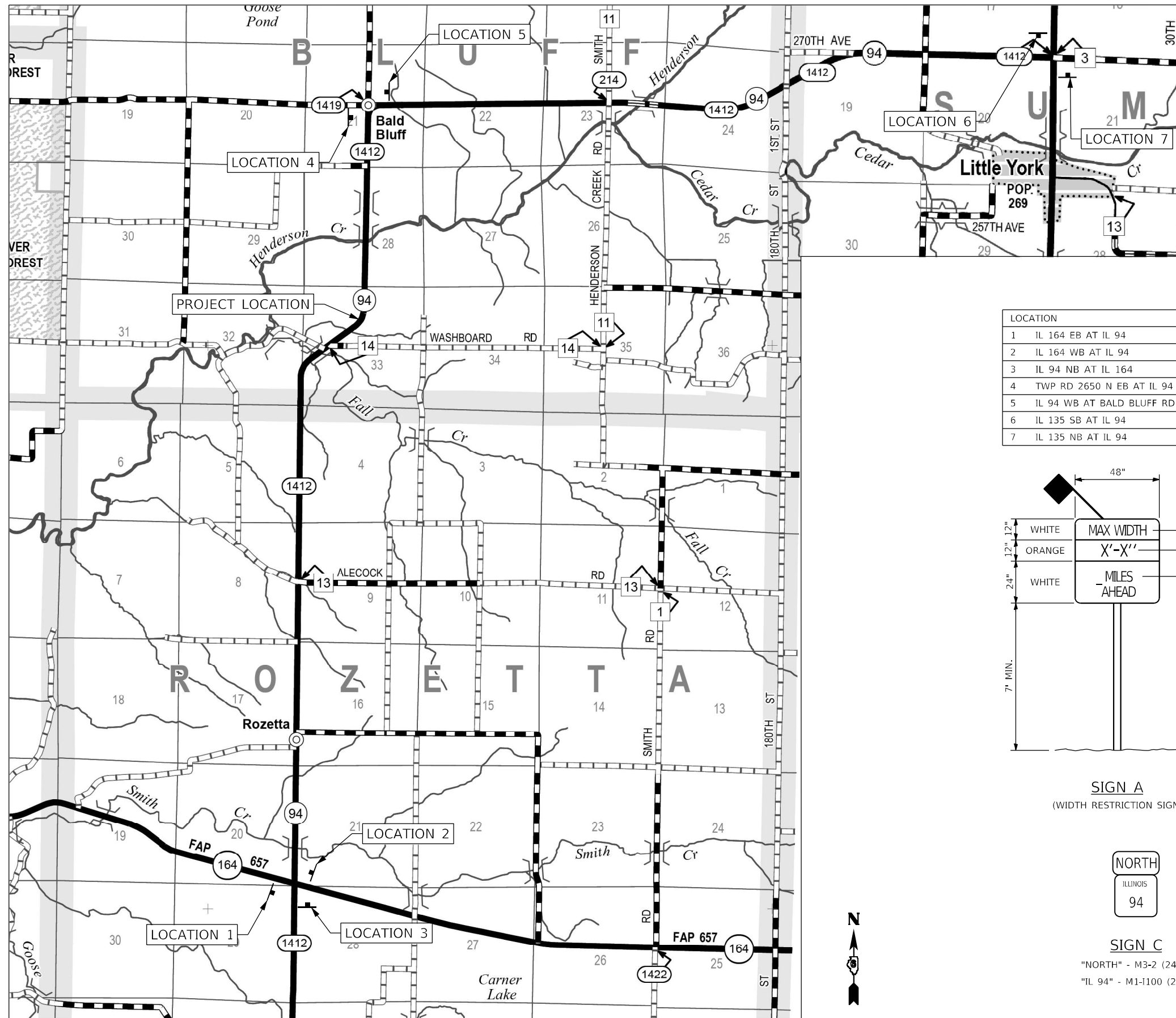
REVISED -
 REVISED -
 REVISED -
 REVISED -

**STATE OF ILLINOIS
 DEPARTMENT OF TRANSPORTATION**

**F.A.S. ROUTE 1412 (IL 94)
 TYPICAL SECTIONS**

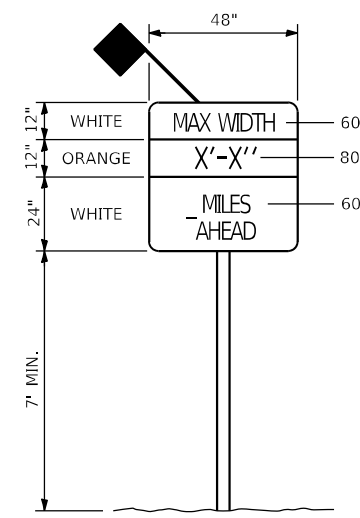
SCALE: NONE SHEET 1 OF 1 SHEETS STA. N/A TO STA. N/A

F.A.S. RTE.	SECTION	COUNTY	TOTAL SHEETS	SHEET NO.
1412	106(SLP-3;CR-1)	HENDERSON	22	9
CONTRACT NO. 68H97				
ILLINOIS		FED. AID PROJECT		

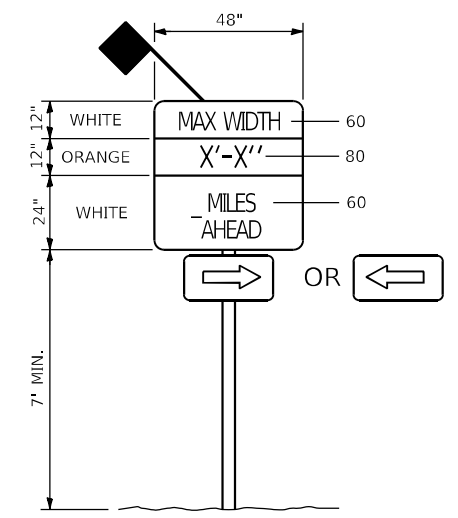


GENERAL NOTES:
 ACTUAL MAXIMUM WIDTH ARE TO BE MEASURED BY THE ENGINEER AFTER TEMPORARY CONCRETE BARRIER WALL IS PLACED FOR STAGE 1.
 ALL SIGNS SHALL BE POST MOUNTED IN ACCORDANCE WITH ARTICLE 701.14 OF THE STANDARD SPECIFICATIONS FOR ROAD AND BRIDGE CONSTRUCTION.

LOCATION	SIGN(S)	DISTANCE
1 IL 164 EB AT IL 94	B/C	5.0 MILES
2 IL 164 WB AT IL 94	B/C	5.0 MILES
3 IL 94 NB AT IL 164	A/C	5.0 MILES
4 TWP RD 2650 N EB AT IL 94	B/D	1.8 MILES
5 IL 94 WB AT BALD BLUFF RD	A	1.8 MILES
6 IL 135 SB AT IL 94	B/D	7.4 MILES
7 IL 135 NB AT IL 94	B/D	7.4 MILES



SIGN A
(WIDTH RESTRICTION SIGN)



SIGN B
(WIDTH RESTRICTION SIGN)



SIGN C
 "NORTH" - M3-2 (2412)
 "IL 94" - M1-1100 (2424)



SIGN D
 "SOUTH" - M3-4 (2412)
 "IL 94" - M1-1100 (2424)



MODEL: Default
 FILE NAME: P:\Caledonia\2116313081\DDOT - DIST 4 - P1B 201-0321\Work Order 08 - FY 2023 Above Repair\18_Transportation\Location 2\CADD_Sheets\010_Max Width_Signage.dgn
 KLINGNER & ASSOCIATES, P.C.
 Engineers • Architects • Surveyors
 616 N. 24TH ST. QUINCY, ILLINOIS 62451-2123, 3670
 STATE OF ILLINOIS DESIGN FIRM NO. 184-2738

KLINGNER & ASSOCIATES, P.C.	USER NAME = aschaefer	DESIGNED - AMS	REVISED -
Engineers • Architects • Surveyors	PLOT SCALE = 40,0000' / in.	DRAWN - MAW	REVISED -
616 N. 24TH ST. QUINCY, ILLINOIS 62451-2123, 3670	PLOT DATE = 4/7/2024	CHECKED - MCL	REVISED -
STATE OF ILLINOIS DESIGN FIRM NO. 184-2738		DATE -	REVISED -

**STATE OF ILLINOIS
 DEPARTMENT OF TRANSPORTATION**

**F.A.S. ROUTE 1412 (IL 94)
 MAXIMUM WIDTH SIGNING DETAIL**

SCALE: NONE SHEET 1 OF 1 SHEETS STA. N/A TO STA. N/A

F.A.S. RTE.	SECTION	COUNTY	TOTAL SHEETS	SHEET NO.
1412	106(SLP-3;CR-1)	HENDERSON	22	10
CONTRACT NO. 68H97				
ILLINOIS FED. AID PROJECT				

LEGEND	
	DIRECTION OF TRAFFIC
	TYPE III BARRICADE
	TEMPORARY CONCRETE BARRIER
	DRUM WITH BI-DIRECTIONAL STEADY BURNING LIGHT
	TEMPORARY TRAFFIC SIGNAL
	TEMPORARY IMPACT ATTENUATOR
	WORK ZONE
	BIDIRECTIONAL REFLECTORS

STAGE CONSTRUCTION SEQUENCE

THE FOLLOWING STAGE CONSTRUCTION SEQUENCE IS FOR INFORMATION ONLY. THE CONTRACTOR IS RESPONSIBLE FOR PLANNING AND EXECUTING THIS PROJECT WHICH SHALL BE SUBJECT TO THE APPROVAL OF THE ENGINEER.

STAGE 1:

- SET UP STAGE 1 TRAFFIC CONTROL.
- REMOVE EXISTING TREES.
- REMOVE EXISTING SHOULDER, AND EXISTING GUARDRAIL WITHIN LIMITS OF WORK ZONE.
- EXTEND EXISTING CULVERT
- GRADE SOUTHBOUND SLOPE OF IL 94 AND INSTALL RIPRAP.
- CONSTRUCT HOT-MIX ASPHALT SHOULDERS, 8" ALONG THE SOUTHBOUND LANE.
- PLACE NEW STEEL PLATE BEAM GUARDRAIL, TYPE A, 9 FOOT POSTS WITHIN LIMIT OF TRAFFIC CONTROL.
- REMOVE STAGE 1 TRAFFIC CONTROL

STAGE 2:

- REMOVE EXISTING GUARDRAIL OUTSIDE LIMIT OF TRAFFIC CONTROL.
- PLACE NEW STEEL PLATE BEAM GUARDRAIL, TYPE A, 9 FOOT POSTS.
- UTILIZE TRAFFIC CONTROL AND PROTECTION STANDARD 701201.

STAGE 3:

- CONSTRUCT FINAL PAVEMENT MARKINGS.
- UTILIZE TRAFFIC CONTROL AND PROTECTION, STANDARD 701311.

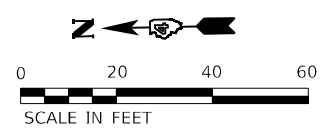
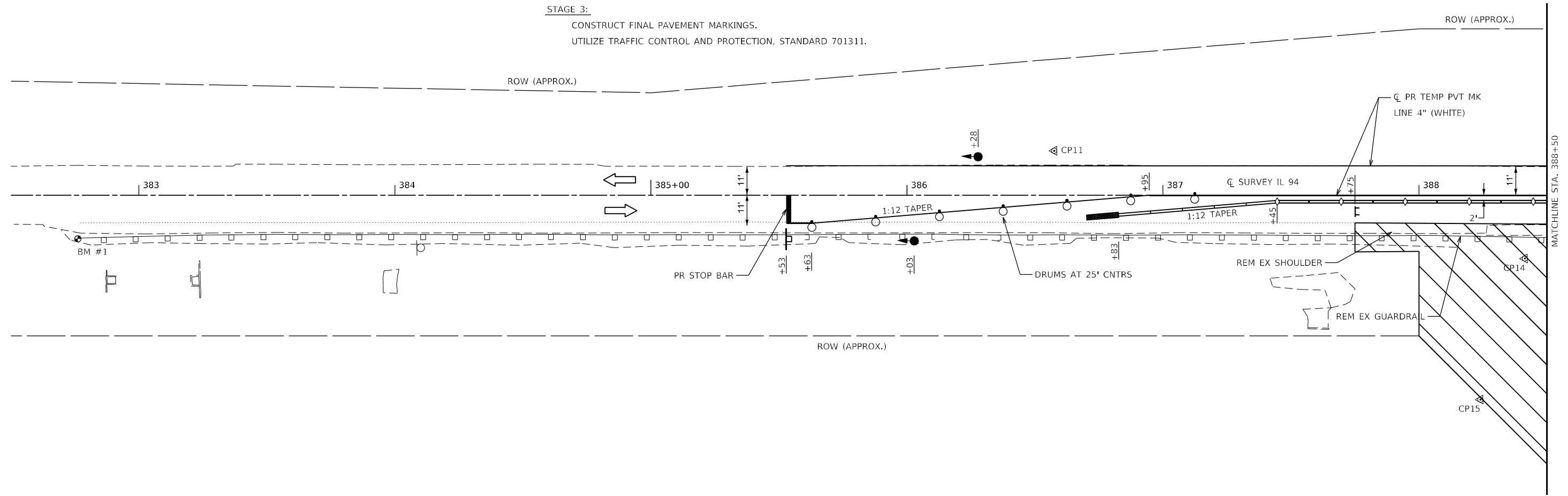
GENERAL NOTES

VERTICAL PANELS, DRUMS WITH STEADY BURNING LIGHTS, TYPE III BARRICADES, SIGNS, DETECTOR LOOPS, AND TYPE B BIDIRECTIONAL GUARDRAIL AND BARRIER REFLECTORS SHALL BE INCLUDED IN THE COST OF THE PAY ITEM "TRAFFIC CONTROL AND PROTECTION, STANDARD 701321 (SPECIAL)"

THIS WORK SHALL SUPPLEMENT AND BE IN ACCORDANCE WITH HIGHWAY STANDARD 701321.

THE CONTRACTOR SHALL PLACE MAX WIDTH SIGNS BEFORE IMPLEMENTING ANY STAGE TRAFFIC CONTROL.

REMOVE ALL CONFLICTING PAVEMENT MARKINGS, UTILIZING STANDARD 701311.



ADVANCE SIGNAGE, DETECTOR LOOPS, AND RUMBLE STRIPS IN ACCORDANCE WITH HIGHWAY STANDARD 701321. AN ADDITIONAL RUMBLE STRIP AND SIGNAL AHEAD SIGN W3-3(0)-48 WITH SOLAR POWERED FLASHING BEACON ASSEMBLY SHALL BE PLACED 200' PRIOR TO THE RCA SIGN.

MODEL: Default; FILE: NAME: P:\Caledonia\2116313081\DOT - DIST - 4 - PTB 201-0321\Work Order 08 - FY 2023 Slope Repair\18_Transportation\Location 2_TCBP_Signing_Sht_1.dgn

KLINGNER & ASSOCIATES, P.C. Engineers • Architects • Surveyors 616 N. 24TH ST. QUINCY, ILLINOIS 62301 217.223.3670 STATE OF ILLINOIS DESIGN FIRM NO. 184-2738	USER NAME = aschafer	DESIGNED - AMS	REVISED -	STATE OF ILLINOIS DEPARTMENT OF TRANSPORTATION	F.A.S. ROUTE 1412 (IL 94) TRAFFIC CONTROL PLANS	F.A.S. RTE. = 1412	SECTION = 106(SLP-3;CR-1)	COUNTY = HENDERSON	TOTAL SHEETS = 22	SHEET NO. = 11
	PLOT SCALE = 40,0000 * / in.	CHECKED - MCL	REVISED -			SCALE: 1"=20'	SHEET 1 OF 2 SHEETS	STA. 382+50.00 TO STA. 388+50.00	ILLINOIS FED. AID PROJECT	
	PLOT DATE = 4/7/2024	DATE -	REVISED -							

LEGEND	
	DIRECTION OF TRAFFIC
	TYPE III BARRICADE
	TEMPORARY CONCRETE BARRIER
	DRUM WITH BI-DIRECTIONAL STEADY BURNING LIGHT
	TEMPORARY TRAFFIC SIGNAL
	TEMPORARY IMPACT ATTENUATOR
	WORK ZONE
	BIDIRECTIONAL REFLECTORS

STAGE CONSTRUCTION SEQUENCE

THE FOLLOWING STAGE CONSTRUCTION SEQUENCE IS FOR INFORMATION ONLY. THE CONTRACTOR IS RESPONSIBLE FOR PLANNING AND EXECUTING THIS PROJECT WHICH SHALL BE SUBJECT TO THE APPROVAL OF THE ENGINEER.

STAGE 1:

- SET UP STAGE 1 TRAFFIC CONTROL.
- REMOVE EXISTING TREES.
- REMOVE EXISTING SHOULDER, AND EXISTING GUARDRAIL WITHIN LIMITS OF WORK ZONE.
- EXTEND EXISTING CULVERT
- GRADE SOUTHBOUND SLOPE OF IL 94 AND INSTALL RIPRAP.
- CONSTRUCT HOT-MIX ASPHALT SHOULDERS, 8" ALONG THE SOUTHBOUND LANE.
- PLACE NEW STEEL PLATE BEAM GUARDRAIL, TYPE A, 9 FOOT POSTS WITHIN LIMIT OF TRAFFIC CONTROL.
- REMOVE STAGE 1 TRAFFIC CONTROL

STAGE 2:

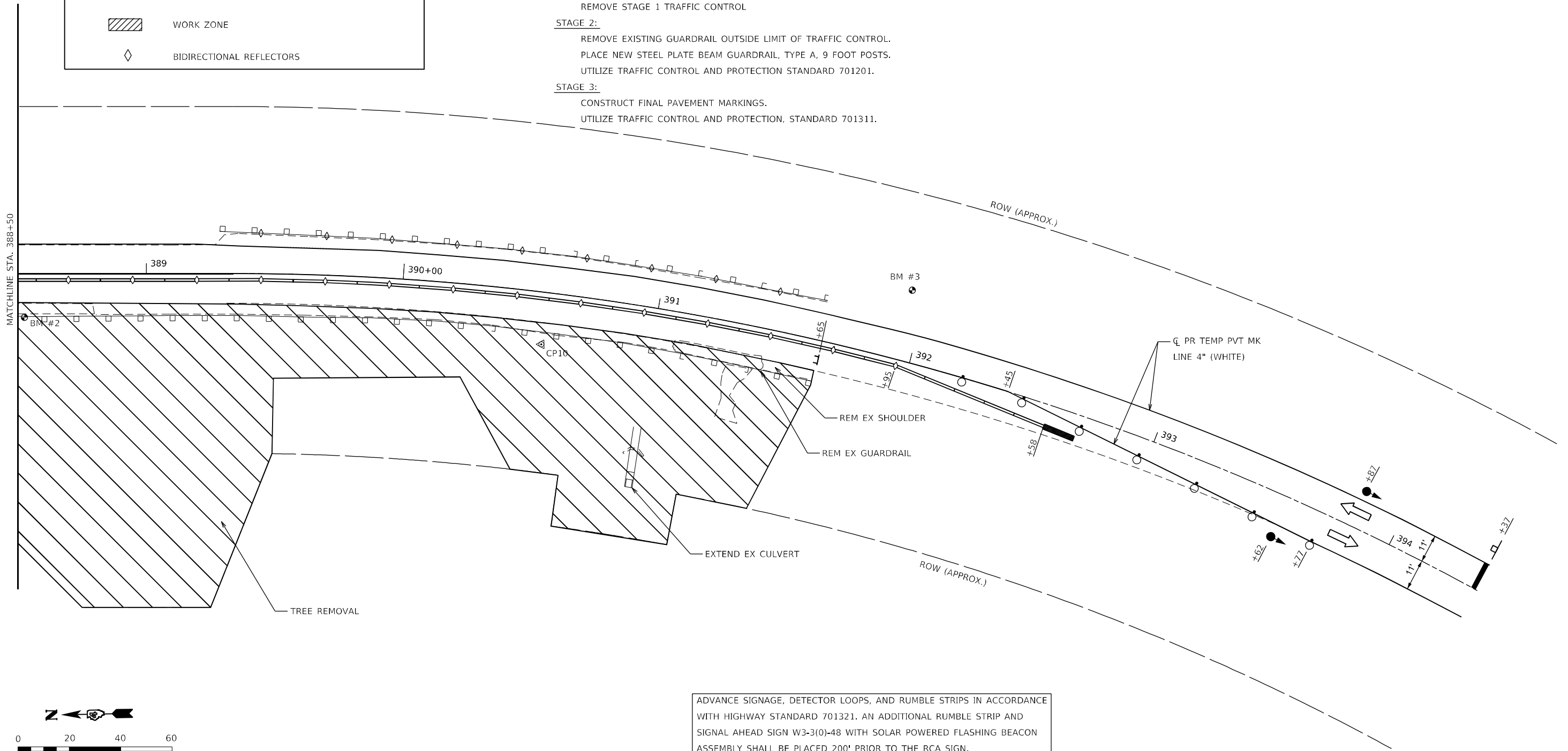
- REMOVE EXISTING GUARDRAIL OUTSIDE LIMIT OF TRAFFIC CONTROL.
- PLACE NEW STEEL PLATE BEAM GUARDRAIL, TYPE A, 9 FOOT POSTS.
- UTILIZE TRAFFIC CONTROL AND PROTECTION STANDARD 701201.

STAGE 3:

- CONSTRUCT FINAL PAVEMENT MARKINGS.
- UTILIZE TRAFFIC CONTROL AND PROTECTION, STANDARD 701311.

GENERAL NOTES

- VERTICAL PANELS, DRUMS WITH STEADY BURNING LIGHTS, TYPE III BARRICADES, SIGNS, DETECTOR LOOPS, AND TYPE B BIDIRECTIONAL GUARDRAIL AND BARRIER REFLECTORS SHALL BE INCLUDED IN THE COST OF THE PAY ITEM "TRAFFIC CONTROL AND PROTECTION, STANDARD 701321 (SPECIAL)"
- THIS WORK SHALL SUPPLEMENT AND BE IN ACCORDANCE WITH HIGHWAY STANDARD 701321.
- THE CONTRACTOR SHALL PLACE MAX WIDTH SIGNS BEFORE IMPLEMENTING ANY STAGE TRAFFIC CONTROL.
- REMOVE ALL CONFLICTING PAVEMENT MARKINGS, UTILIZING STANDARD 701311.



ADVANCE SIGNAGE, DETECTOR LOOPS, AND RUMBLE STRIPS IN ACCORDANCE WITH HIGHWAY STANDARD 701321. AN ADDITIONAL RUMBLE STRIP AND SIGNAL AHEAD SIGN W3-3(0)-48 WITH SOLAR POWERED FLASHING BEACON ASSEMBLY SHALL BE PLACED 200' PRIOR TO THE RCA SIGN.

MODEL: Default; FILE: NAME: P:\Caledonia\2116313081\DOT - DIST 4 - PTB 201-023\Work Order 08 - FY 2023 Slope Repair\18_TrafficControl\Location 2_TCEP Signing Sht. 2.dwg

KLINGNER & ASSOCIATES, P.C.
 Engineers • Architects • Surveyors
 616 N. 24TH ST. QUINCY, ILLINOIS 62301 217.223.3670
 STATE OF ILLINOIS DESIGN FIRM NO. 184-2738

USER NAME = aschaefer	DESIGNED - AMS	REVISED -
DRAWN - MAW	REVISED -	
PLOT SCALE = 40,0000 * / in.	CHECKED - MCL	REVISED -
PLOT DATE = 4/7/2024	DATE -	REVISED -




**STATE OF ILLINOIS
DEPARTMENT OF TRANSPORTATION**

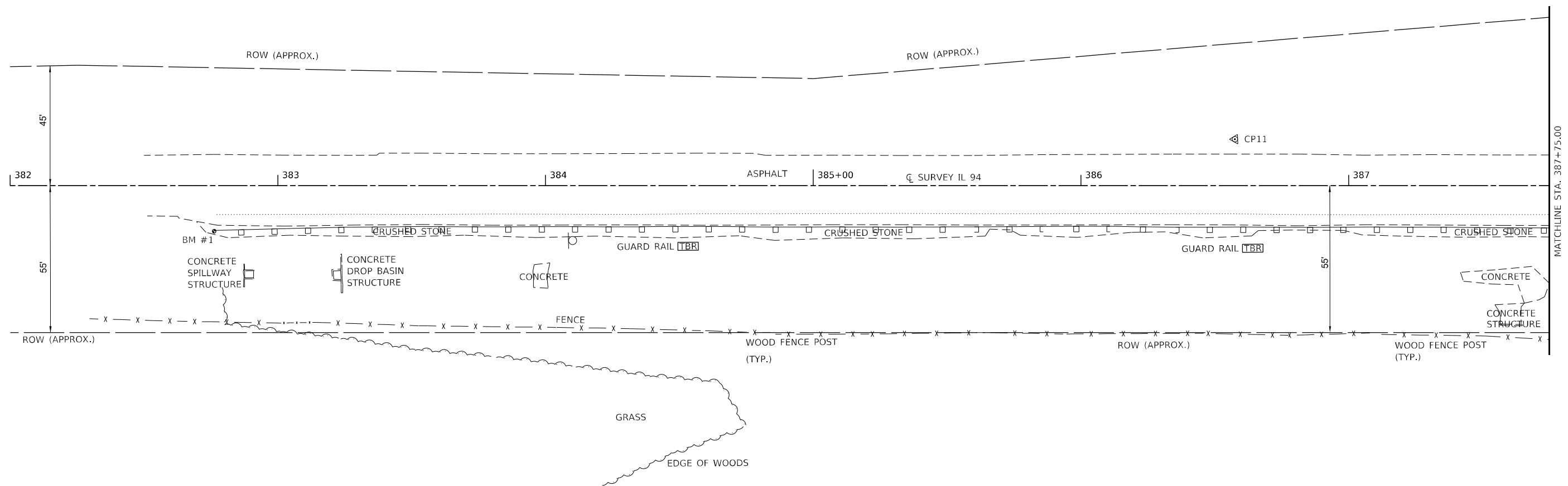
**F.A.S. ROUTE 1412 (IL 94)
TRAFFIC CONTROL PLANS**

SCALE: 1"=20' SHEET 2 OF 2 SHEETS STA. 388+50.00 TO STA. 394+40.00

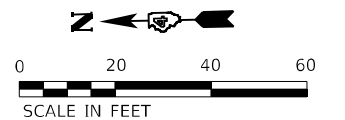
F.A.S. RTE.	SECTION	COUNTY	TOTAL SHEETS	SHEET NO.
1412	106(SLP-3;CR-1)	HENDERSON	22	12
CONTRACT NO. 68H97				
ILLINOIS FED. AID PROJECT				

REMOVAL LEGEND

-  PAVED SHOULDER REMOVAL
-  TREE REMOVAL
-  TO BE REMOVED



NOTE:
CONTRACTOR SHALL REMOVE THE EXISTING EROSION CONTROL CURBS WITHIN THE PROJECT LIMITS. COST INCLUDED IN "PAVED SHOULDER REMOVAL".



MODEL: Default
 FILE NAME: P:\Caledonia\2116313081\DOT - DIST 4 - PTB 201-023\Work Order 08 - FY 2023 Slope Repair\18_Transportation\Location 2\CADD_Sheets\013_Location 2 Removal.dwg
 MODEL: Default
 FILE NAME: P:\Caledonia\2116313081\DOT - DIST 4 - PTB 201-023\Work Order 08 - FY 2023 Slope Repair\18_Transportation\Location 2\CADD_Sheets\013_Location 2 Removal.dwg

KLINGNER & ASSOCIATES, P.C.
 Engineers • Architects • Surveyors
 616 N. 24TH ST. QUINCY, ILLINOIS 62301-2172, 233.3670
 STATE OF ILLINOIS DESIGN FIRM NO. 184-2738

USER NAME = aschafer	DESIGNED - AMS	REVISED -
DRAWN - MAW	REVISED -	
PLOT SCALE = 40,0000 * / in.	CHECKED - MCL	REVISED -
PLOT DATE = 4/7/2024	DATE -	REVISED -





**STATE OF ILLINOIS
DEPARTMENT OF TRANSPORTATION**

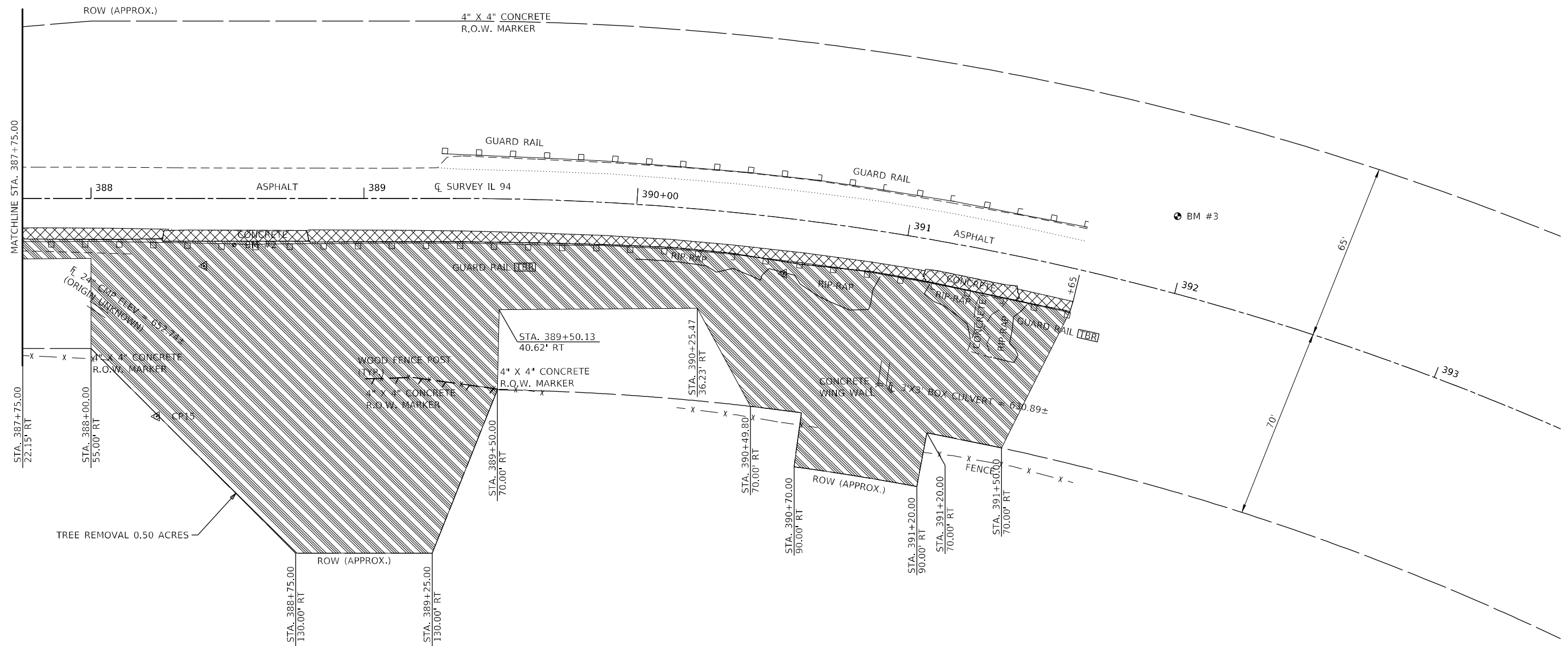
**F.A.S. ROUTE 1412 (IL 94)
REMOVAL PLANS**

SCALE: 1"=20' SHEET 1 OF 2 SHEETS STA. 382+00.00 TO STA. 387+75.00

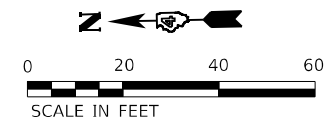
F.A.S. RTE.	SECTION	COUNTY	TOTAL SHEETS	SHEET NO.
1412	106(SLP-3;CR-1)	HENDERSON	22	13
CONTRACT NO. 68H97				
ILLINOIS FED. AID PROJECT				

REMOVAL LEGEND

-  PAVED SHOULDER REMOVAL
-  TREE REMOVAL
-  TO BE REMOVED
-  WOVEN WIRE FENCE REMOVAL



NOTE:
CONTRACTOR SHALL REMOVE THE EXISTING EROSION CONTROL CURBS WITHIN THE PROJECT LIMITS. COST INCLUDED IN "PAVED SHOULDER REMOVAL".



MODEL: Defaul; FILE NAME: P:\Caledon\2\116313081\DOT - DIST 4 - PTB 201-033\Work Order 08 - FY 2023 Slope Repair\18_Transportation\Location 2 Removal2.dgn

KLINGNER & ASSOCIATES, P.C.
 Engineers • Architects • Surveyors
 616 N. 24TH ST. QUINCY, ILLINOIS 62301 217.223.3670
 STATE OF ILLINOIS DESIGN FIRM NO. 184-2738

USER NAME = aschaefer	DESIGNED - AMS	REVISED -
PLOT SCALE = 40,0000 * / in.	DRAWN - MAW	REVISED -
PLOT DATE = 4/7/2024	CHECKED - MCL	REVISED -
	DATE -	REVISED -

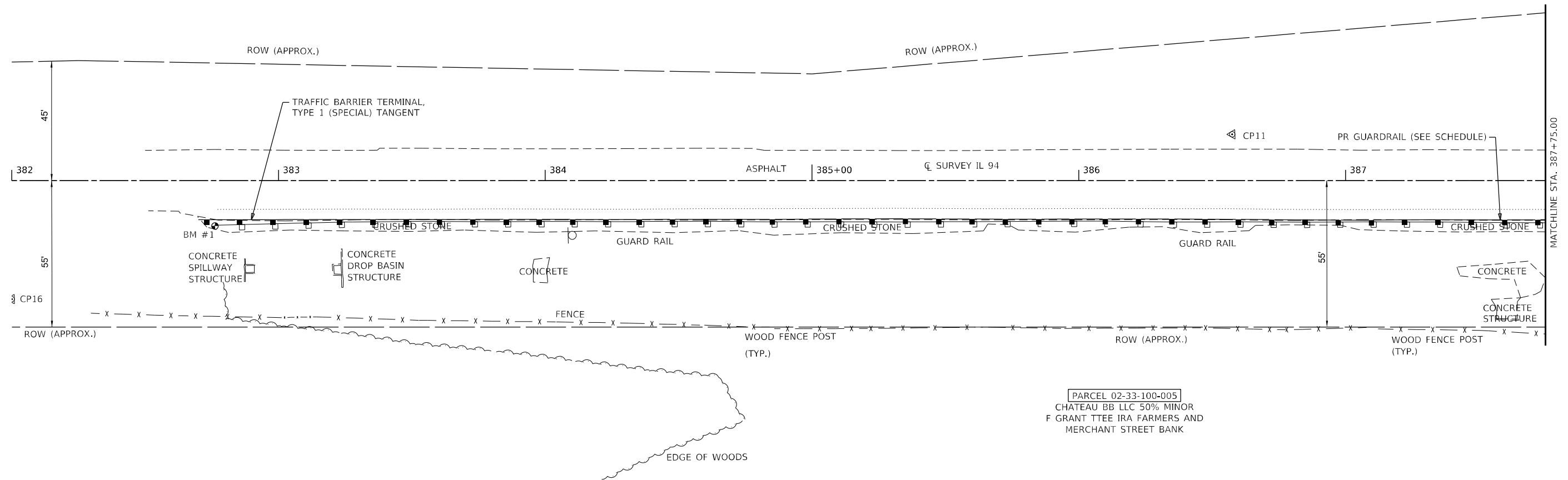
**STATE OF ILLINOIS
DEPARTMENT OF TRANSPORTATION**

**F.A.S. ROUTE 1412 (IL 94)
REMOVAL PLANS**

SCALE: 1"=20' SHEET 2 OF 2 SHEETS STA. 387+75.00 TO STA. 393+50.00

F.A.S. RTE.	SECTION	COUNTY	TOTAL SHEETS	SHEET NO.
1412	106(SLP-3;CR-1)	HENDERSON	22	14
CONTRACT NO. 68H97				
ILLINOIS FED. AID PROJECT				

PARCEL 02-33-200-001
RICKETTS FAMILY FARMS TRUST



BM #1
MAGNAIL IN TOP OF NORTHERNMOST
WOOD GUARDRAIL POST
ELEV = 686.31

PARCEL 02-33-100-005
CHATEAU BB LLC 50% MINOR
F GRANT TTEE IRA FARMERS AND
MERCHANT STREET BANK

MODEL: Default
FILE NAME: P:\Caledonia\2116313081\DOT - DIST 4 - PTB 201-023\Work Order 08 - FY 2023 Slope Repair\18_Transportation\Location 2\CADD_Sheets\015_Location 2_Plan.dgn

KLINGNER & ASSOCIATES, P.C.
Engineers • Architects • Surveyors
616 N. 24TH ST. QUINCY, ILLINOIS 62301-2172, 233.3670
STATE OF ILLINOIS DESIGN FIRM NO. 184-2738

USER NAME = aschafer	DESIGNED - AMS	REVISED -
PLOT SCALE = 40,0000 * / in.	DRAWN - MAW	REVISED -
PLOT DATE = 4/7/2024	CHECKED - MCL	REVISED -
	DATE -	REVISED -

**STATE OF ILLINOIS
DEPARTMENT OF TRANSPORTATION**

**F.A.S. ROUTE 1412 (IL 94)
SITE PLANS**

SCALE: 1"=20' SHEET 1 OF 2 SHEETS STA. 382+00.00 TO STA. 387+75.00

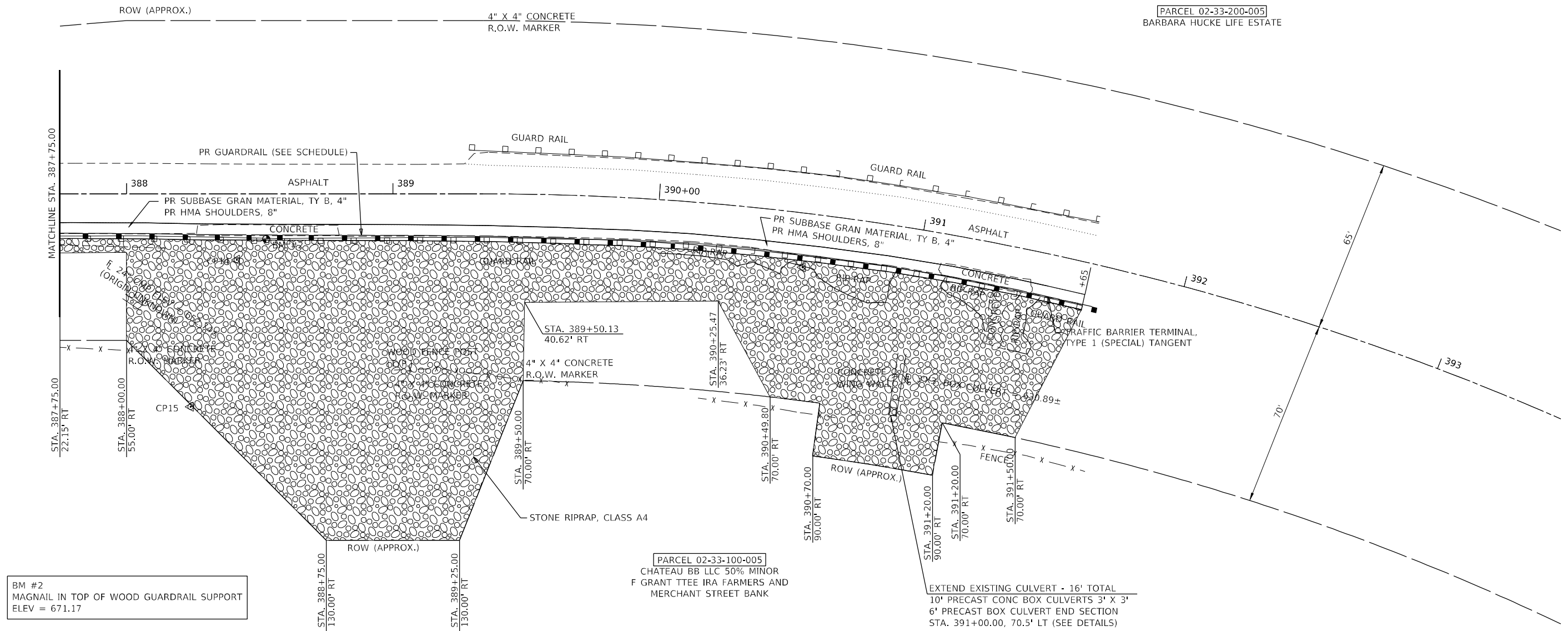
F.A.S. RTE.	SECTION	COUNTY	TOTAL SHEETS	SHEET NO.
1412	106(SLP-3;CR-1)	HENDERSON	22	15
CONTRACT NO. 68H97				
ILLINOIS FED. AID PROJECT				

LEGEND

 RIP RAP

PARCEL 02-33-200-001
RICKETTS FAMILY FARMS TRUST

PARCEL 02-33-200-005
BARBARA HUCKE LIFE ESTATE

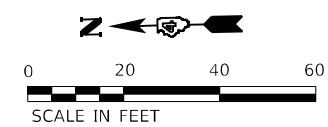


BM #2
MAGNAIL IN TOP OF WOOD GUARDRAIL SUPPORT
ELEV = 671.17

BM #3
RAILROAD SPIKE IN 18" TWIN CEDAR TREE
ELEV = 661.50

PARCEL 02-33-100-005
CHATEAU BB LLC 50% MINOR
F GRANT TTEE IRA FARMERS AND
MERCHANT STREET BANK

EXTEND EXISTING CULVERT - 16' TOTAL
10' PRECAST CONC BOX CULVERTS 3' X 3'
6' PRECAST BOX CULVERT END SECTION
STA. 391+00.00, 70.5' LT (SEE DETAILS)



MODEL: D:\p\h\k\...
 FILE NAME: P:\Caledonia\2116313081\DOT - DIST 4 - PTB 201-033\Work Order 08 - FY 2023 Above Repair\18_Transportation\Location 2\CADD_Sheets\01_Location 2_Plan2.dgn
 MODEL: D:\p\h\k\...
 FILE NAME: P:\Caledonia\2116313081\DOT - DIST 4 - PTB 201-033\Work Order 08 - FY 2023 Above Repair\18_Transportation\Location 2\CADD_Sheets\01_Location 2_Plan2.dgn

KLINGNER & ASSOCIATES, P.C.
Engineers • Architects • Surveyors
616 N. 24TH ST. QUINCY, ILLINOIS 62301 217.223.3670
STATE OF ILLINOIS DESIGN FIRM NO. 184-2738

USER NAME = aschaefer	DESIGNED - AMS	REVISED -
PLOT SCALE = 40,0000' / in.	DRAWN - MAW	REVISED -
PLOT DATE = 4/7/2024	CHECKED - MCL	REVISED -
	DATE -	REVISED -

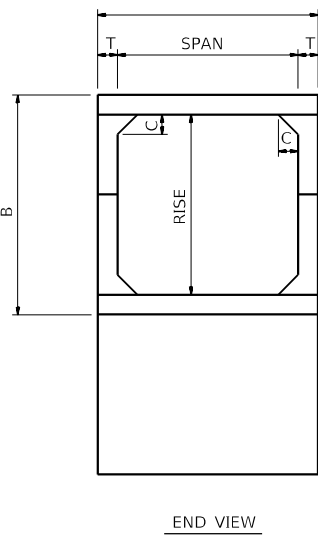
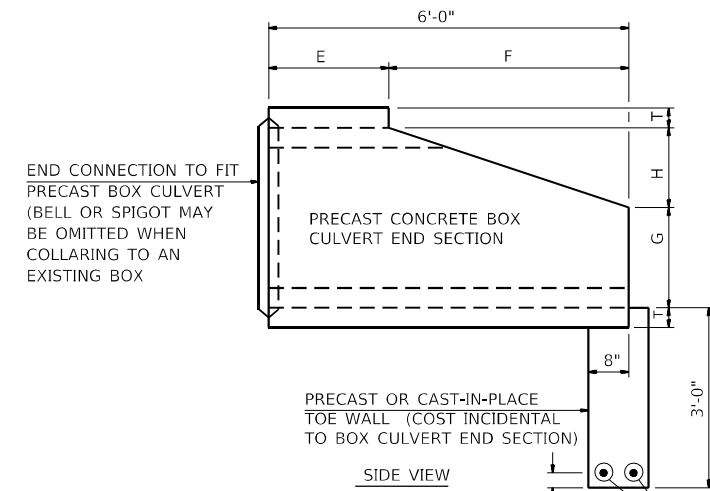
**STATE OF ILLINOIS
DEPARTMENT OF TRANSPORTATION**

**F.A.S. ROUTE 1412 (IL 94)
SITE PLANS**

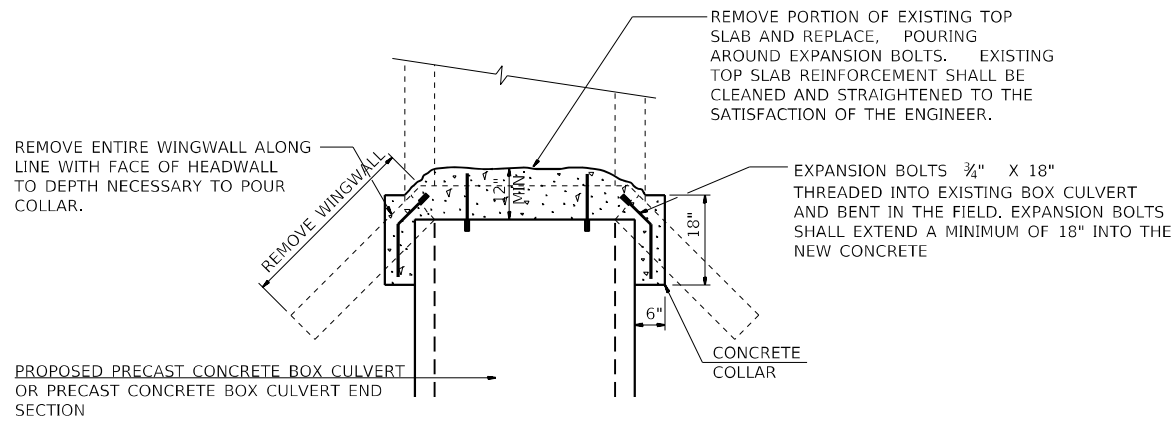
SCALE: 1"=20' SHEET 2 OF 2 SHEETS STA. 387+75 TO STA. 393+50.00

F.A.S. RTE.	SECTION	COUNTY	TOTAL SHEETS	SHEET NO.
1412	106(SLP-3;CR-1)	HENDERSON	22	16
CONTRACT NO. 68H97				
ILLINOIS FED. AID PROJECT				

NOTE:
EXPANSION BOLTS SHALL CONSIST OF SELF DRILLING EXPANSION SHIELDS AND 3/4" DIAMETER HOOKED BOLTS. HOOKED BOLTS SHALL EXTEND A MINIMUM DISTANCE AS SPECIFIED, 9" OR 18" INTO THE NEW CONCRETE. MINIMUM CERTIFIED PROOF LOAD = 4080 LBS.



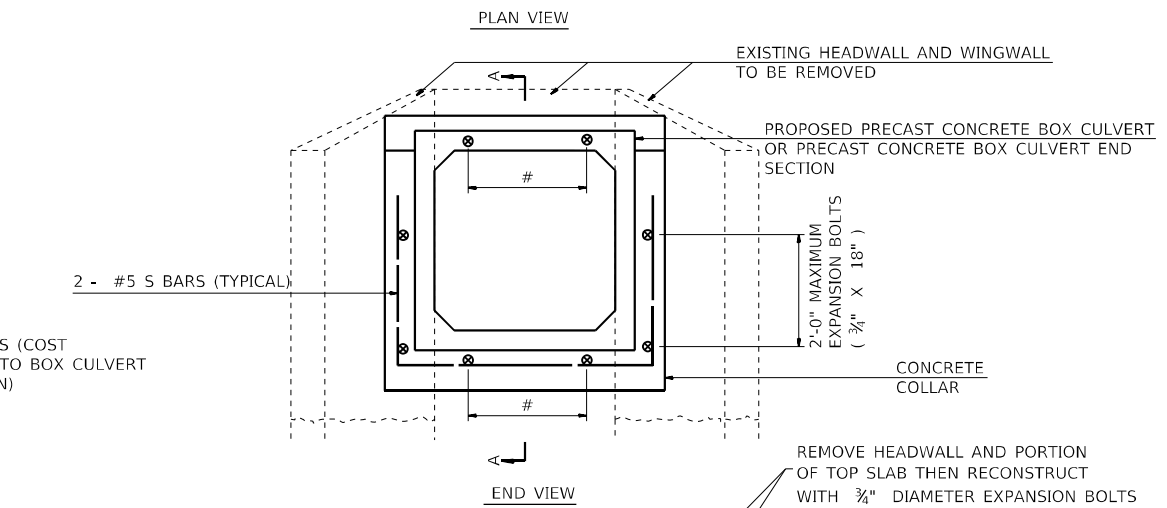
Span x Rise	T	A	B	C	E	F	G	H
3' x 3'	4"	3'-8"	3'-8"	4"	2'-0"	4'-0"	1'-8"	1'-4"



NUMBER OF EXPANSION BOLTS AND SPACING

SPAN X RISE	TOP SLAB 3/4" X 9" *	BOTTOM SLAB 3/4" X 9" *	EACH WING 3/4" X 18" **
3' x 3'	2 at 24"	2 at 24"	2 at 24"

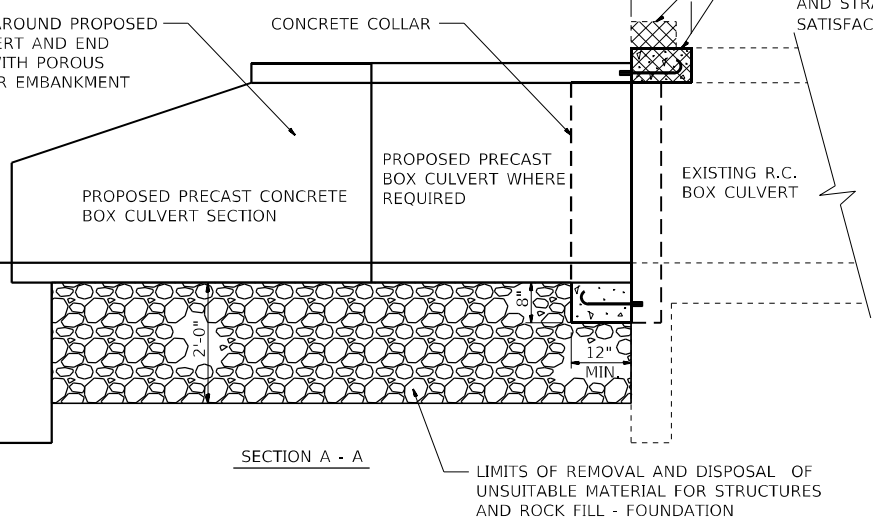
* THE DIMENSIONS SHOWN ARE THE MINIMUM EXTENSIONS OF THE EXPANSION BOLTS INTO THE NEW CONCRETE.



SCHEDULE OF ESTIMATED EARTHWORK QUANTITIES

STATION	SIZE (FT)	* REMOVAL & DISPOSAL OF UNSUITABLE MATERIAL FOR STRUCTURES (C.Y.)	POROUS GRANULAR EMBANKMENT TON	* ROCK FILL TON
		391+00.00 RT	3' X 3'	14

* APPROXIMATELY 2'-0" DEEP



SCHEDULE OF ESTIMATED QUANTITIES

STATION	SIZE (FT)	CONCRETE COLLAR (C.Y.)	EXPANSION BOLTS (EA.)	REINFORCEMENT BARS (LBS)	PRECAST CONCRETE BOX CULVERTS 3'X3' (FOOT)	BOX CULVERT END SECTIONS, CULVERT NO. 1 (EACH)
		391+00.00 RT	3' X 3'	0.6	8	24

NOTE:
REMOVAL OF EXISTING WINGWALLS, HEADWALLS, PORTIONS OF EXISTING TOP SLABS, ETC., SHALL NOT BE PAID FOR SEPARATELY, BUT SHALL BE CONSIDERED AS INCLUDED IN THE CONTRACT UNIT PRICE PER CUBIC YARD FOR CONCRETE COLLAR.

STRUCTURE EXCAVATION REQUIRED FOR THE REMOVAL OF EXISTING HEADWALLS, WINGWALLS, OR TOP SLABS SHALL BE INCLUDED IN THE COST OF BOX CULVERT END SECTION.

COST OF POROUS GRANULAR EMBANKMENT AND REMOVAL AND DISPOSAL OF UNSUITABLE MATERIAL SHALL BE PAID FOR SEPARATELY.

THE LIMITS AND QUANTITIES OF REMOVAL AND REPLACEMENT SHOWN ARE BASED ON THE BORING DATA AND MAY BE MODIFIED BY THE DISTRICT GEOTECHNICAL ENGINEER AND FIELD ENGINEERS FOR VARIABLE SUBSURFACE CONDITIONS ENCOUNTERED IN THE FIELD. THE MINIMUM UNCONFINED COMPRESSIVE STRENGTH OF THE LAYER BELOW THE REMOVAL LIMIT SHALL BE 1.0 TSF.

MODEL: Defaul; FILE NAME: P:\Caledburg\2\filed\13081\DOT - DIST - 4 - PTB 2014\03\Work Order 08 - FY 2023 Slope Repair\18_Transportation\Location_2\CADD_Sheets\017-Culvert Extension_Detail.dgn

KLINGNER & ASSOCIATES, P.C.
Engineers • Architects • Surveyors
616 N. 24TH ST. QUINCY, ILLINOIS 62301 217.223.3670
STATE OF ILLINOIS DESIGN FIRM NO. 184-2738

USER NAME = aschaefer	DESIGNED - AMS	REVISED -
PLOT SCALE = 120,0000 ' / in.	DRAWN - MAW	REVISED -
PLOT DATE = 12/13/2024	CHECKED - MCL	REVISED -
	DATE -	REVISED -

**STATE OF ILLINOIS
DEPARTMENT OF TRANSPORTATION**

**F.A.S. ROUTE 1412 (IL 94)
BOX CULVERT EXTENSION DETAILS**

SCALE: NONE SHEET 1 OF 1 SHEETS STA. TO STA.

F.A.S. RTE.	SECTION	COUNTY	TOTAL SHEETS	SHEET NO.
1412	106(SLP-3;CR-1)	HENDERSON	22	17
CONTRACT NO. 68H97				
ILLINOIS FED. AID PROJECT				

ORIGINAL	SUBMITTED	DATE
SURVEY	_____	_____
NOTE BOOK	_____	_____
AREAS PLOTTED	_____	_____
AREAS CHECKED	_____	_____

FINAL	SUBMITTED	DATE
SURVEY	_____	_____
NOTE BOOK	_____	_____
AREAS PLOTTED	_____	_____
AREAS CHECKED	_____	_____

FILE NAME: P:\Klingner\210821\DOT - DIST 4.4 - P18 2023\231018 DOT - DIST 4.4 - P18 2023\231018 - Transportation Location 2\CADD Sheets\018_024 section 2_X.sdw

KLINGNER & ASSOCIATES P.C.
 Engineers • Architects • Surveyors
 1001 West Lake Street
 Suite 100
 Galesburg, Illinois 62401
 Phone: 309.343.1100
 Fax: 309.343.1101
 Email: info@klingner.com

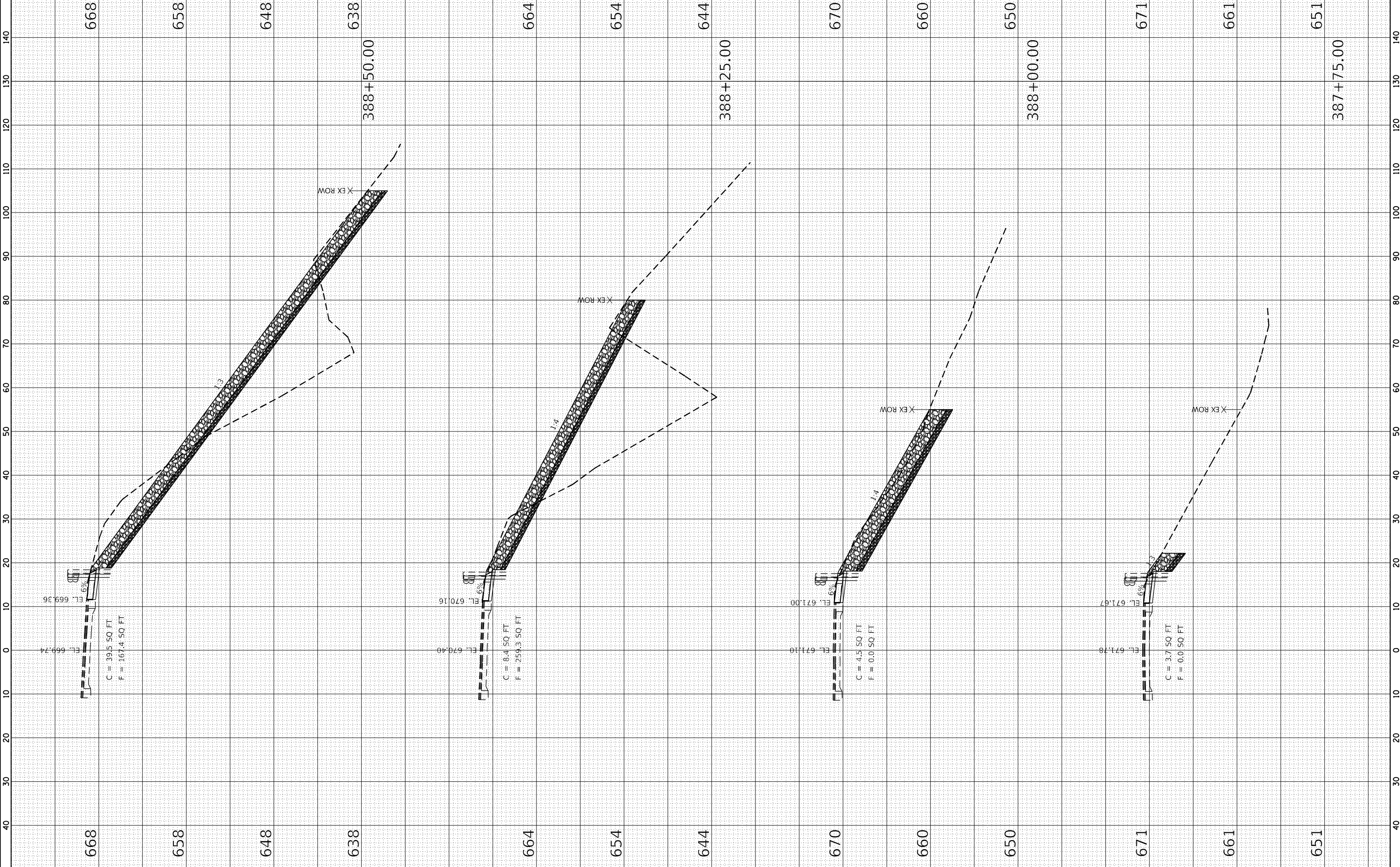
USER NAME = akshar
 DESIGNED - AMS
 DRAWN - MAM
 CHECKED - MCL
 DATE -

REVISIONS
 REVISED -
 REVISED -
 REVISED -

STATE OF ILLINOIS
DEPARTMENT OF TRANSPORTATION

SCALE: 1"=10'
 1"=20'
 SHEET 1 OF 5 SHEETS
 STA. 387+75.00 TO STA. 388+50.00
F.A.S. ROUTE 1412 (IL 94)
CROSS SECTIONS

F.A.S. RTE.	SECTION	COUNTY	TOTAL SHEETS
1412	106(SLP-3-CR-1)	HENDERSON	22
ILLINOIS FED. AID PROJECT			18
CONTRACT NO. 68H97			



ORIGINAL	SUBMITTED	DATE
SURVEY	_____	_____
NOTE BOOK	_____	_____
AREAS CHECKED	_____	_____

FINAL	SUBMITTED	DATE
SURVEY	_____	_____
NOTE BOOK	_____	_____
AREAS CHECKED	_____	_____

KLINGNER & ASSOCIATES, P.C.
 Engineers • Architects • Surveyors
 1000 North LaSalle Street
 Suite 1000
 Chicago, Illinois 60610
 Phone: (312) 467-1000
 Fax: (312) 467-1001
 Email: info@klingner.com

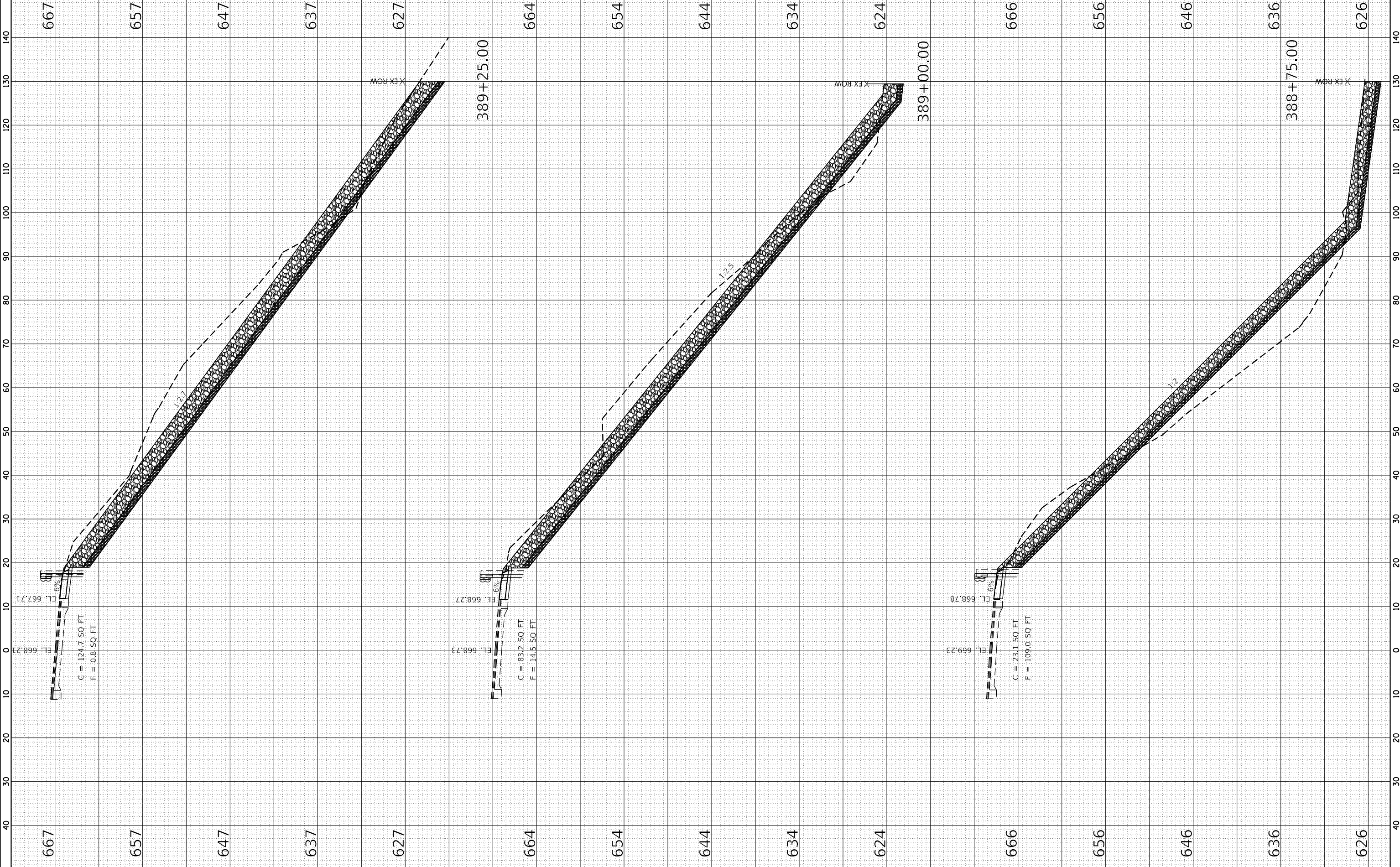
USER NAME = akshar
 DESIGNED - AMS
 DRAWN - MAM
 CHECKED - MCL
 DATE -

REVISIONS
 REVISIONS
 REVISIONS

STATE OF ILLINOIS
 DEPARTMENT OF TRANSPORTATION

SCALE: 1" = 10'
 1" = 20'
 SHEET 2 OF 5 SHEETS
 STA. 388+75.00 TO STA. 389+25.00
F.A.S. ROUTE 1412 (IL 94)
CROSS SECTIONS

F.A.S. RTE. 1412
 SECTION 106(SLP-3;CR-1)
 COUNTY HENDERSON
 CONTRACT NO. 68H97
 TOTAL SHEETS 22
 SHEETS 19



C = 124.7 SQ. FT.
 F = 0.8 SQ. FT.

C = 83.2 SQ. FT.
 F = 14.5 SQ. FT.

C = 23.1 SQ. FT.
 F = 109.0 SQ. FT.

667 657 647 637 627 664 654 644 634 624 666 656 646 636 626

140 130 120 110 100 90 80 70 60 50 40 30 20 10 0 10 20 30 40 50 60 70 80 90 100 110 120 130 140

389+25.00 389+00.00 388+75.00

X EX ROW

12.7 12.5 12

6% 6% 6%

DATE	BY	REVISION

DATE	BY	REVISION

KLINGNER & ASSOCIATES, P.C.
 Engineers • Architects • Surveyors
 1000 West Lake Street
 Suite 200
 Chicago, Illinois 60606
 Phone: (773) 344-1100
 Fax: (773) 344-1101
 Website: www.klinger.com

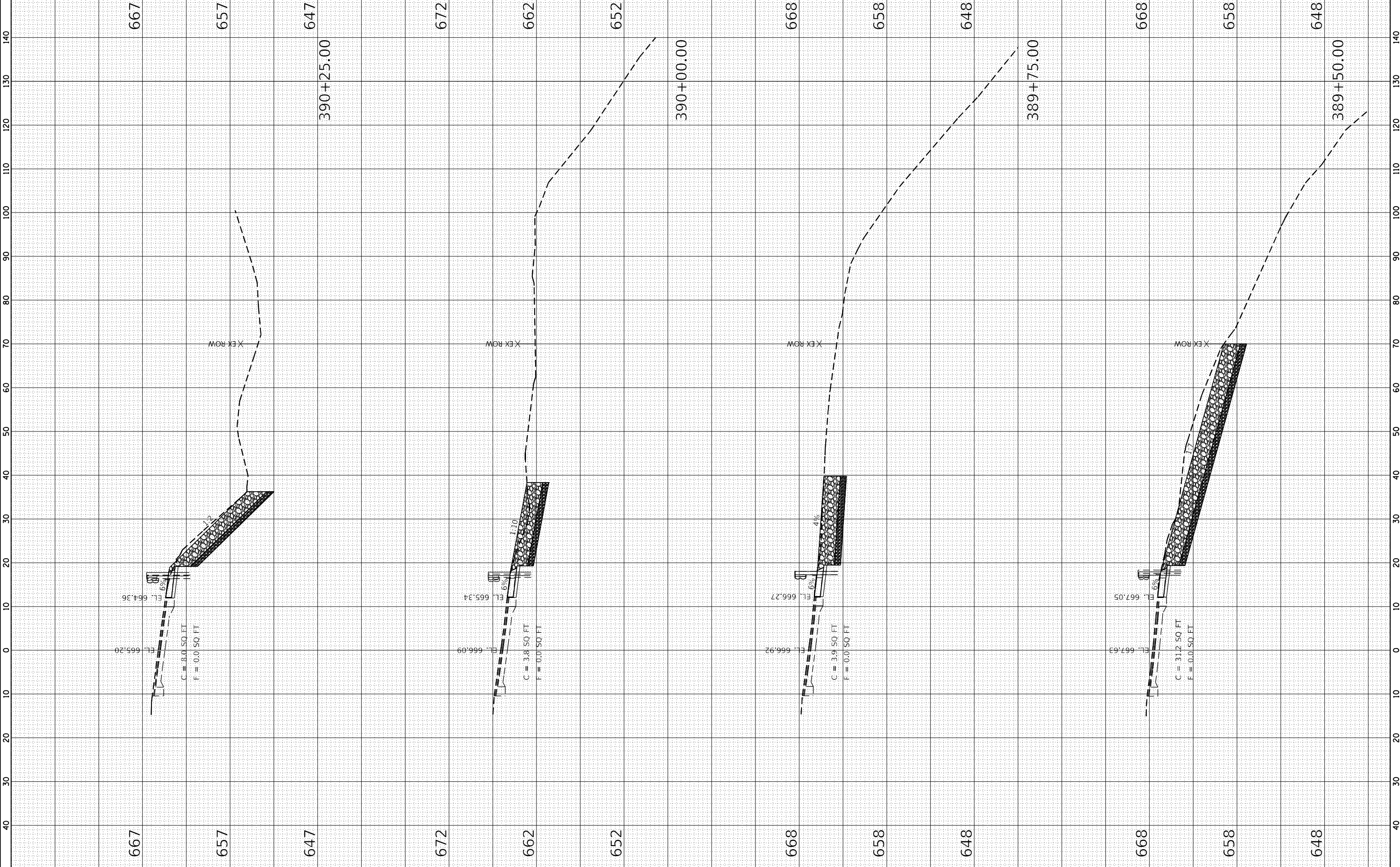
USER NAME = akshar
 DESIGNED - AMS
 DRAWN - MAM
 CHECKED - MCL
 DATE -

REVISIONS
 REVISIONS
 REVISIONS
 REVISIONS

STATE OF ILLINOIS
 DEPARTMENT OF TRANSPORTATION

SCALE: 1" = 10'
 1" = 20'
 SHEET 3 OF 5 SHEETS
 STA. 389+50.00 TO STA. 390+25.00
 F.A.S. ROUTE 1412 (IL 94)
 CROSS SECTIONS

F.A.S. ROUTE 1412 (IL 94)
 SECTION
 COUNTY
 HENDERSON
 CONTRACT NO. 68H97
 TOTAL SHEETS 22
 SHEETS 20



140 130 120 110 100 90 80 70 60 50 40 30 20 10 0 10 20 30 40

140 130 120 110 100 90 80 70 60 50 40 30 20 10 0 10 20 30 40

667

657

647

672

662

652

390+00.00

668

658

648

389+75.00

668

658

648

389+50.00

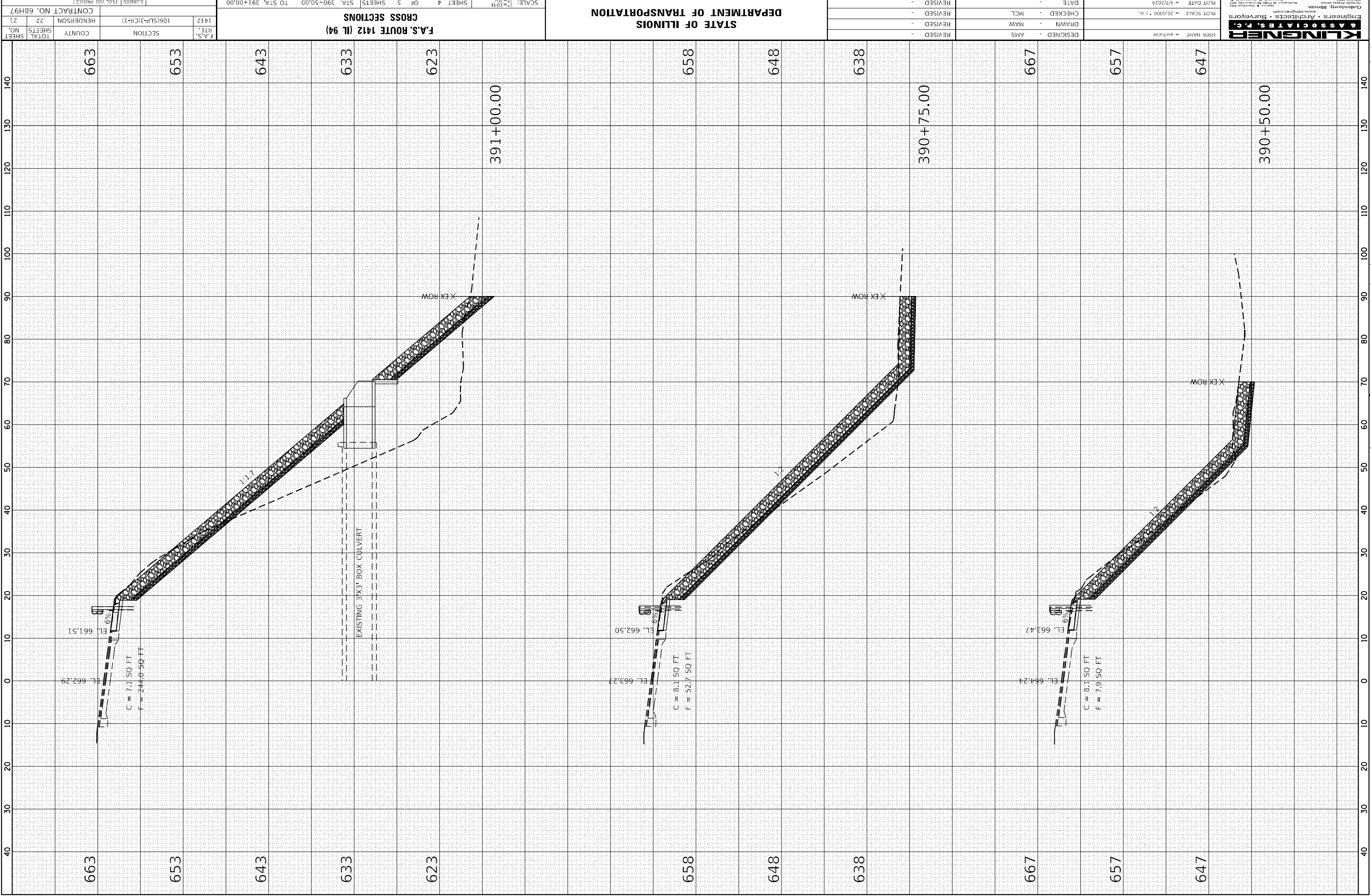


USER NAME = ascholar	DESIGNED - AMS	REVIS
DATE	CHECKED - MCL	REVIS
PLLOT SCALE = 20,000 = 1 in.	REVIS	REVIS
PLLOT DATE = 4/7/2024		

STATE OF ILLINOIS
DEPARTMENT OF TRANSPORTATION

SCALE: $\frac{1"}{200'}$	SHEET 4 OF 5 SHEETS	STA. 390+50.00 TO STA. 391+00.00
F.A.S. ROUTE 1412 (IL 94) CROSS SECTIONS	SECTION	COUNTY
1412	106(SLP-3-CR-1)	HENDERSON
1412		

F.A.S. ROUTE 1412 (IL 94)	SECTION	COUNTY	TOTAL SHEETS
1412	106(SLP-3-CR-1)	HENDERSON	22
1412			21



C = 7.1 50 FT
F = 244.0 50 FT

C = 8.1 50 FT
F = 52.7 50 FT

C = 8.1 50 FT
F = 7.9 50 FT

EXISTING 3'x3' BOX CULVERT

ORIGINAL	SUBMITTED	BY	DATE
SURFER	FLORIANE		
NOTE BOOK			
AREAS CHECKED			

FINAL	SUBMITTED	BY	DATE
SURFER	FLORIANE		
NOTE BOOK			
AREAS CHECKED			

ORIGINAL	SUBMITTED	BY	DATE
SURVEY	PLOTTED		
NOTE BOOK	TEMPLATE		
	AREAS CHECKED		

FINAL	SUBMITTED	BY	DATE
SURVEY	PLOTTED		
NOTE BOOK	TEMPLATE		
	AREAS CHECKED		

KLINGNER & ASSOCIATES, P.C.
 Engineers • Architects • Surveyors
 1000 West Lake Street
 Suite 200
 Galesburg, Illinois 62526
 Phone: 309.343.1100
 Fax: 309.343.1101
 Email: info@klingner.com

USER NAME = akshar	DESIGNED - AMS
	DRAWN - MAM
	CHECKED - MCL
	DATE

REVISIONS	DATE
REVISIONS	REVISIONS
REVISIONS	REVISIONS
REVISIONS	REVISIONS

STATE OF ILLINOIS
DEPARTMENT OF TRANSPORTATION

SCALE: 1" = 20'
 SHEET 5 OF 5 SHEETS
 STA. 391+25.00 TO STA. 391+50.00
F.A.S. ROUTE 1412 (IL 94)
CROSS SECTIONS

F.A.S. RTE. 1412	SECTION 106(SLP-3;CR-1)	COUNTY	TOTAL SHEETS
			22
			CONTRACT NO. 68H97
			HENDERSON
			ILLINOIS
			FED. AID PROJECT

