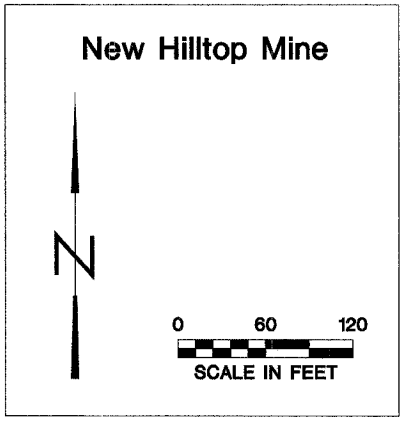
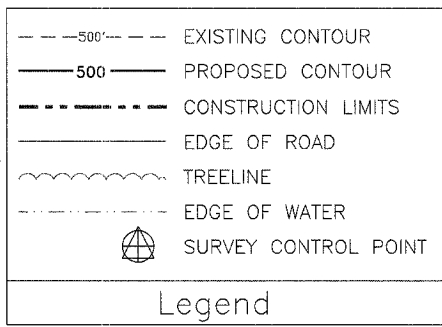
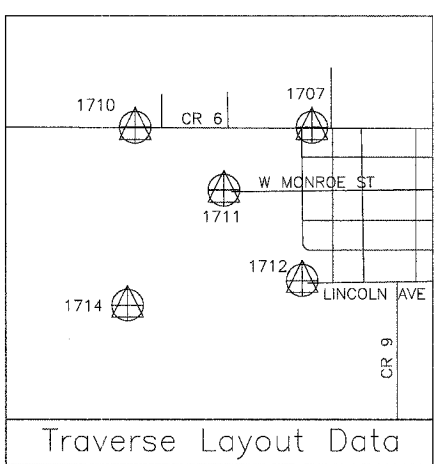


Construction Limits		
	Northing	Easting
A	1,217,985	2,381,200
B	1,217,950	2,381,200
C	1,217,825	2,381,375
D	1,217,550	2,381,375
E	1,217,525	2,381,390
F	1,217,325	2,381,390
G	1,217,200	2,381,550
H	1,217,250	2,381,600
I	1,217,225	2,381,675
J	1,217,175	2,381,750
K	1,217,100	2,381,675
L	1,217,075	2,381,650
M	1,217,300	2,381,365
N	1,217,500	2,381,365
O	1,217,525	2,381,350
P	1,217,800	2,381,350
Q	1,217,925	2,381,175
R	1,217,985	2,381,175



State of Illinois
Department of Natural Resources

New Hilltop Mine Group
Reclamation Project
AML-GMnE-0706
Menard County

Drawn By: T.M., M-LF
Checked By: _____
Date: 12/11/2007

Existing & Proposed
Conditions
Sheet
3 of 7