

F.A.U. NO.	SECTION	COUNTY	TOTAL SHEETS	SHEET NO.
*	38 RS-4	COOK	36	12
STA. TO STA.				
FED. ROAD DIST. NO. 1 ILLINOIS FED. AID PROJECT				
* F.A.P. 343			CONTRACT NO. 60814	
F.A.U. 1273				

Joint Size	"C" at 50°F	"D" at 50°F
2"	2"	1 1/2" Min.
2 1/2"	2 1/2"	1 3/4" Min.
4"	3"	2 1/2" Min.

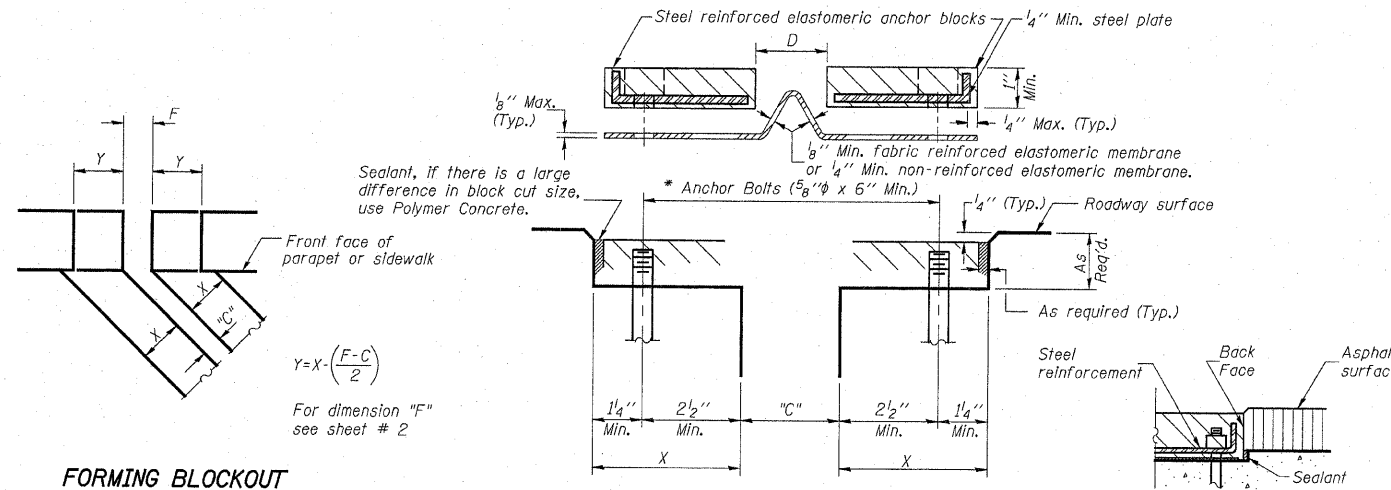
**INSTALLATION NOTES**

- ① Install continuous seal in roadway, parapet, curb, and sidewalk.
- ② Install anchor blocks as indicated.

NOTE A: Maximum spacing of anchor bolts shall be 12" centers.

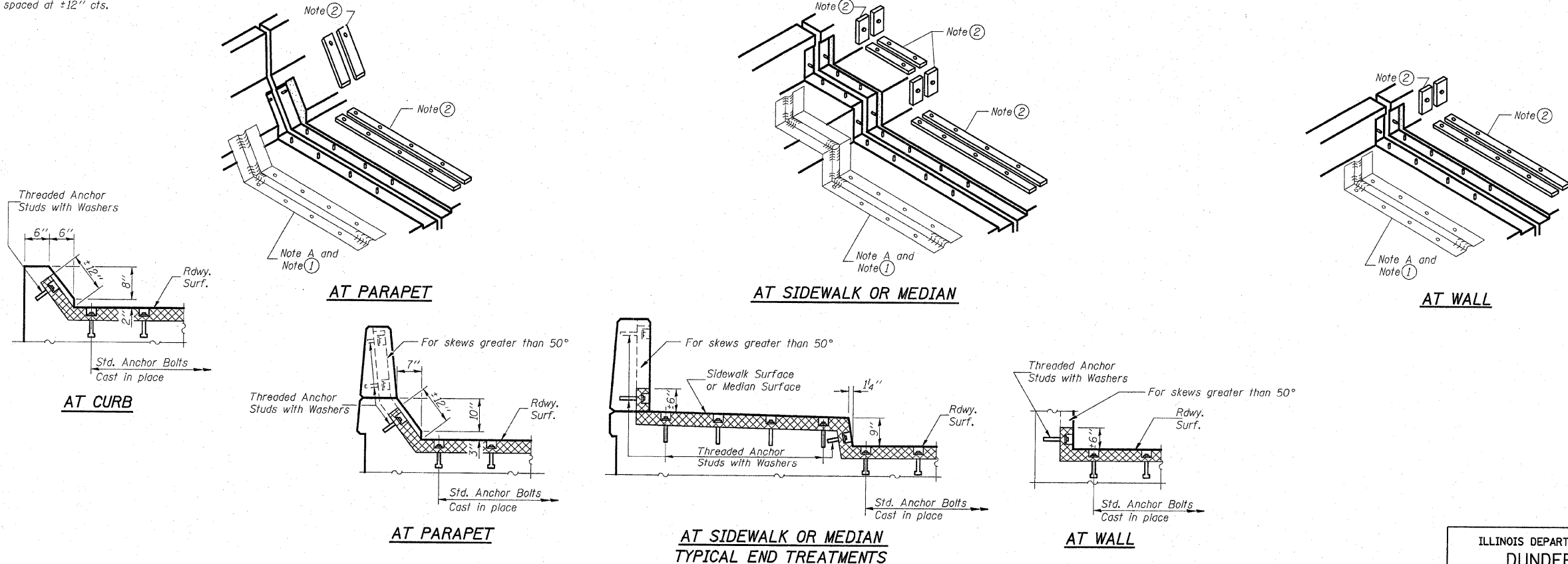
**SKREW LIMITATIONS**

The details of the anchor blocks and the elastomeric membrane in the parapet, as shown, are for up to 50° skews. For skews greater than 50°, the anchor blocks and the elastomeric membrane, installed according to dimension "D", might require modifications to insure a minimum clearance of 1 1/2" from centerline of anchor studs to edge of parapet opening. The anchor blocks and the elastomeric membrane shall also be installed to the top of the parapet with the anchor studs spaced at ±12" cts.



**GENERAL NOTES**

Continuous Seal Neoprene Expansion Joint shall consist of molded anchor blocks of elastomer and steel, field assembled over continuous lengths of elastomeric membrane.  
 The elastomeric membrane shall be pre-molded with a single or a double upward convolution that will have a "memory" to return to its molded position upon joint closure.  
 The convolution length shall be such that the extended length will not be greater than the manufactured length when the joint is fully expanded in its design range and will not protrude above the anchor blocks when the joint is fully compressed.  
 The parapet and roadway membrane shall be made continuous by an approved vulcanizing process. Lapping will not be permitted.  
 \* Epoxy grout 5/8" φ threaded studs in accordance with article 584 of the Standard Specifications space to miss existing studs.  
 Removal of the existing neoprene expansion joint and studs is included in the cost of "NEOPRENE EXPANSION JOINT" of the size specified.



REVISIONS	
NAME	DATE

ILLINOIS DEPARTMENT OF TRANSPORTATION  
 DUNDEE ROAD OVER I-94 (EDENS EXPRESSWAY)  
 NEOPRENE JOINT REMOVAL AND REPLACEMENT  
 SN 016-0939  
 SCALE: NONE  
 DATE APRIL 2000  
 DRAWN BY MVT  
 CHECKED BY TMS