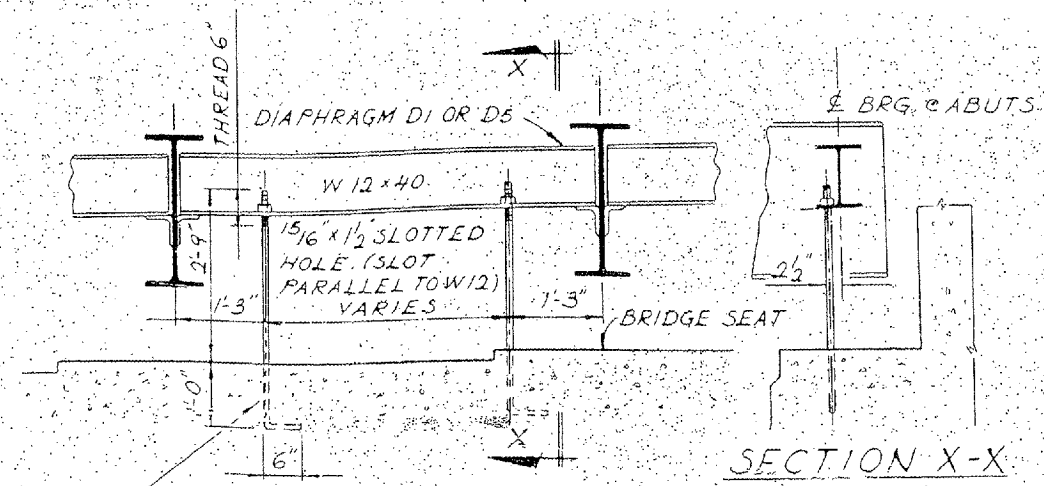
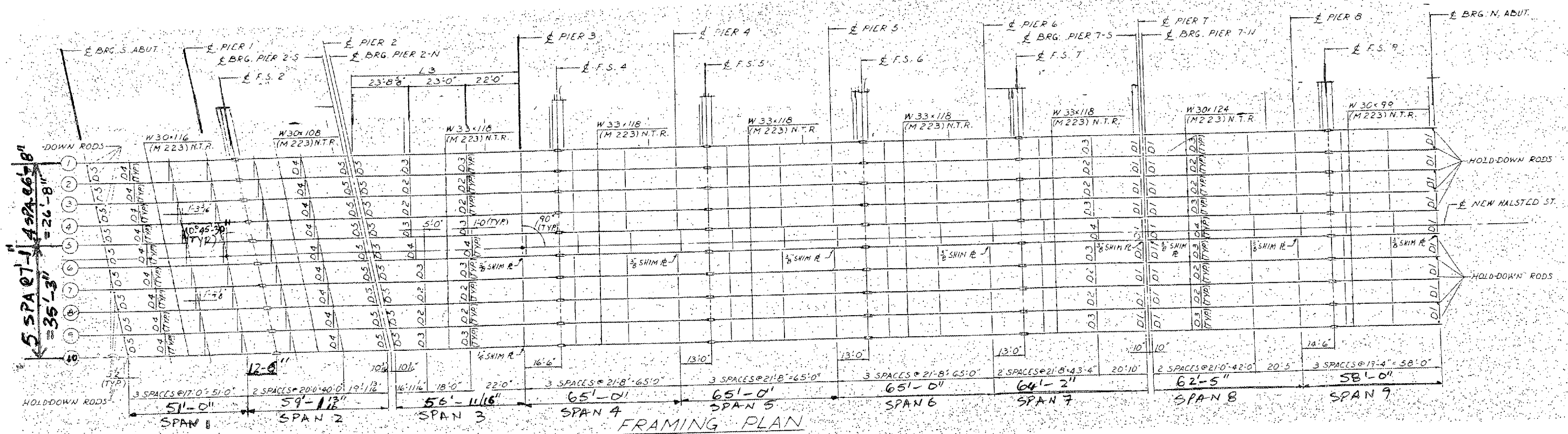


ROUTE	SECTION	COUNTY	TOTAL SHEETS	SHEET NUMBER
VARIOUS	2006-019 BP	COOK	37	8

CONTRACT NO. 60B44

Sh 2 of 2



3/4" HOLD-DOWN ROD WITH 1 HEX NUT AND 1STD. WASHER. COST TO BE INCIDENTAL AFTER BRIDGE DECK HAS BEEN POURED. CUT OFF RODS FLUSH WITH CONCRETE SURFACE

**HOLD-DOWN RODS FOR BEARINGS AT ABUTMENTS**

FOR LOCATION OF HOLD-DOWN DEVICE SEE FRAMING PLAN

**LOCATION NO.1**  
**EXIST. BRIDGE PLANS**  
**IL 1 OVER CSX RR**  
**SN. 016 0104**