

F.A.P. RTE.	SECTION	COUNTY	TOTAL SHEETS	SHEET NO.
330	104B-3-BR	WILL	42	1
FED. ROAD DIST. NO.	ILLINOIS	CONTRACT NO. 60B80		

STATE OF ILLINOIS
DEPARTMENT OF TRANSPORTATION
DIVISION OF HIGHWAYS

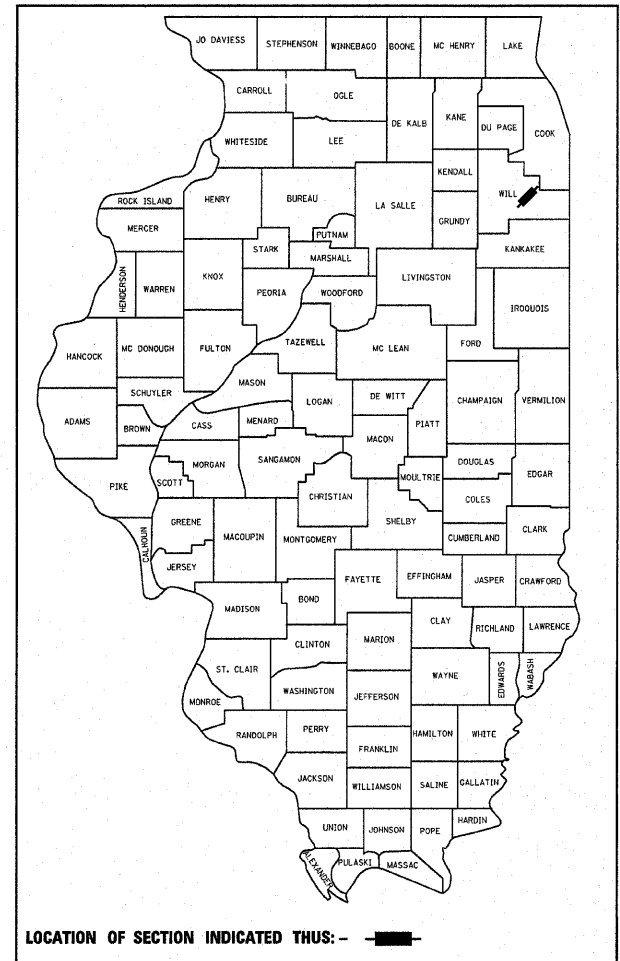
**PROPOSED
HIGHWAY PLANS**

F.A.P. ROUTE 330 (U.S. RTE. 45)
OVER JACKSON CREEK
SECTION: 104B-3-BR
BRIDGE DECK REPLACEMENT
~~PROJECT:~~
WILL COUNTY
C-91-431-06

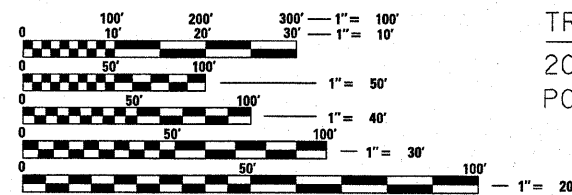
FOR INDEX OF SHEETS, SEE SHEET NO. 2

PROJECT LOCATED IN
THE VILLAGE OF FRANKFORT

D-91-431-06



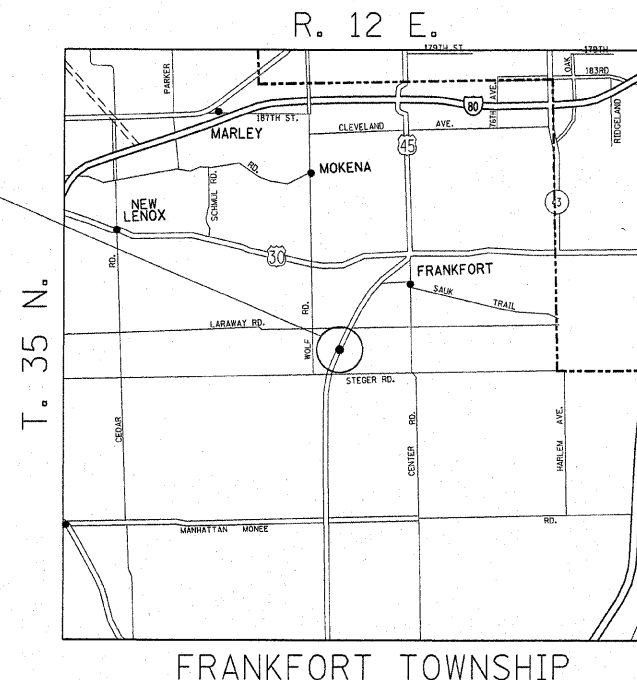
LOCATION OF PROJECT
U.S. RTE. 45 (LAGRANGE ROAD)
OVER JACKSON CREEK



FULL SIZE PLANS HAVE BEEN PREPARED USING STANDARD ENGINEERING SCALES. REDUCED SIZED PLANS WILL NOT CONFORM TO STANDARD SCALES. IN MAKING MEASUREMENTS ON REDUCED PLANS, THE ABOVE SCALES MAY BE USED.

J.U.L.I.E.
JOINT UTILITY LOCATION INFORMATION FOR EXCAVATION
1-800-892-0123
OR 811

TRAFFIC DATA
2001 ADT = 5,400
POSTED SPEED = 45 MPH



US 45 OVER JACKSON CREEK
EXISTING SN: 099 - 2005
PROPOSED SN: 099-4649
REMOVE EXISTING SINGLE SPAN
PRECAST PRESTRESSED CONCRETE
DECK BEAM STRUCTURE AND
CONSTRUCT THREE SIDED PRECAST
CONCRETE STRUCTURE 32' X 10'



PROJECT ENGINEER: J.P. CHANG (847) 705-4432
PLAN PREPARATION ENGINEER: KEN ENG

GROSS & NET LENGTH OF PROJECT = 550 FEET = 0.10 MILE

CONTRACT NO. 60B80

STATE OF ILLINOIS
DEPARTMENT OF TRANSPORTATION
DIVISION OF HIGHWAYS

SUBMITTED October 30 2007

Dione O'Keefe /c/
DEPUTY DIRECTOR OF HIGHWAYS, REGION ENGINEER
December 7, 2007

Eric E. Haran
ENGINEER OF DESIGN AND ENVIRONMENT
December 7, 2007

Christine M. Reed
DIRECTOR OF HIGHWAYS, CHIEF ENGINEER

PRINTED BY THE AUTHORITY
OF THE STATE OF ILLINOIS