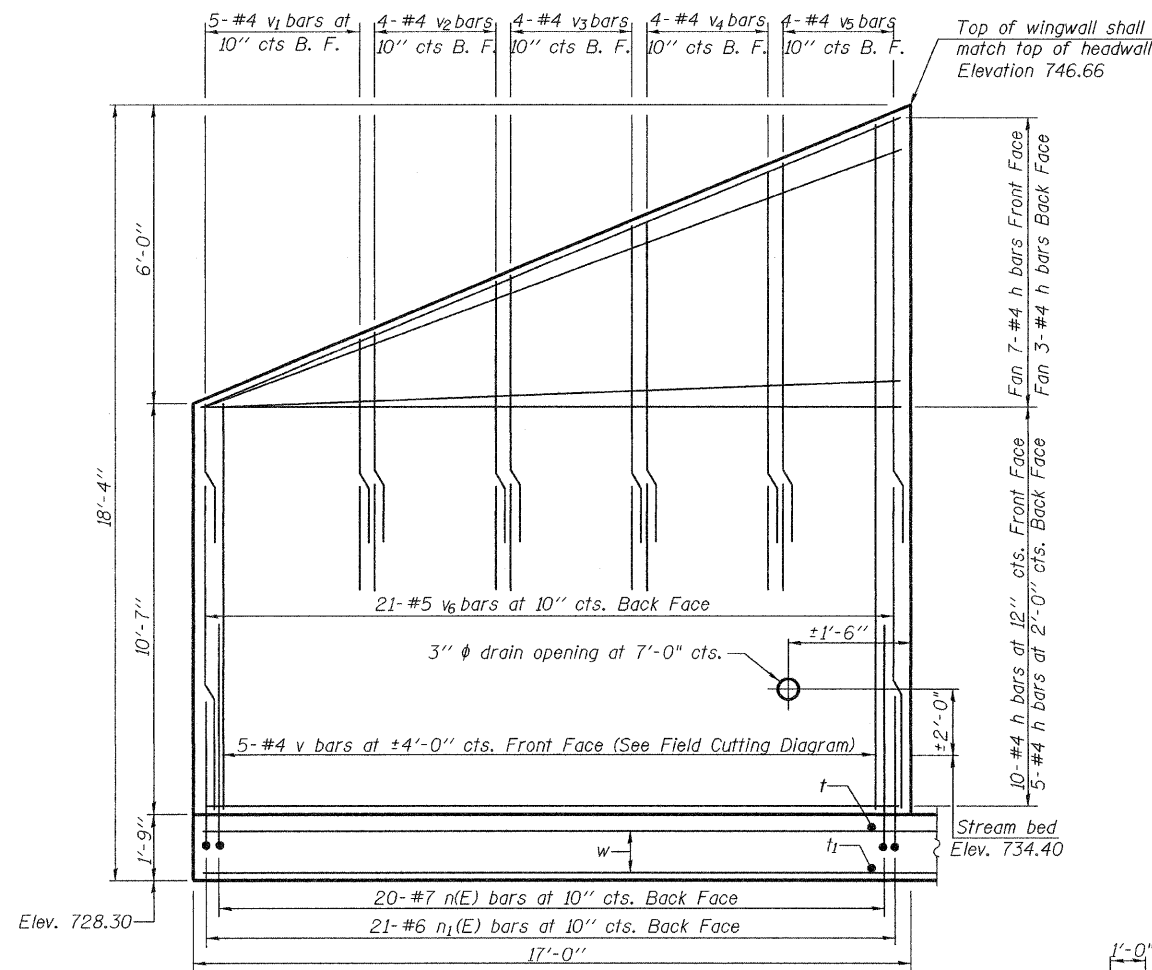


STATE OF ILLINOIS
DEPARTMENT OF TRANSPORTATION

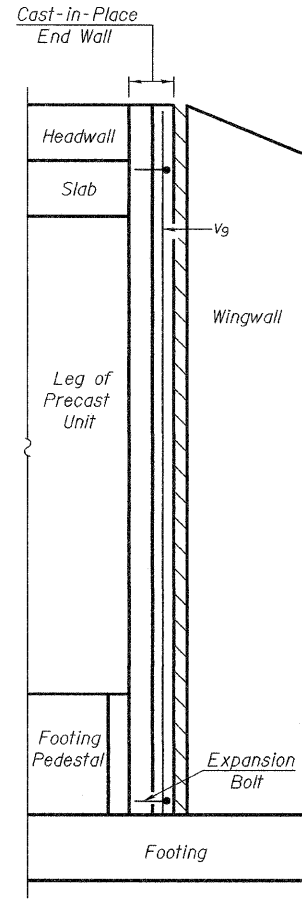
| | | | | | |
|-----------------------|-----------|----------|------------------|-----------|--------------------------|
| ROUTE NO. | SECTION | COUNTY | TOTAL SHEETS | SHEET NO. | SHEET NO. 6 11 SHEETS |
| FAP 330 | 104B-3-BR | WILL | 42 | 25 | |
| FED. ROAD DIST. NO. 7 | | ILLINOIS | FED. AID PROJECT | | |

Contract No. 60B80

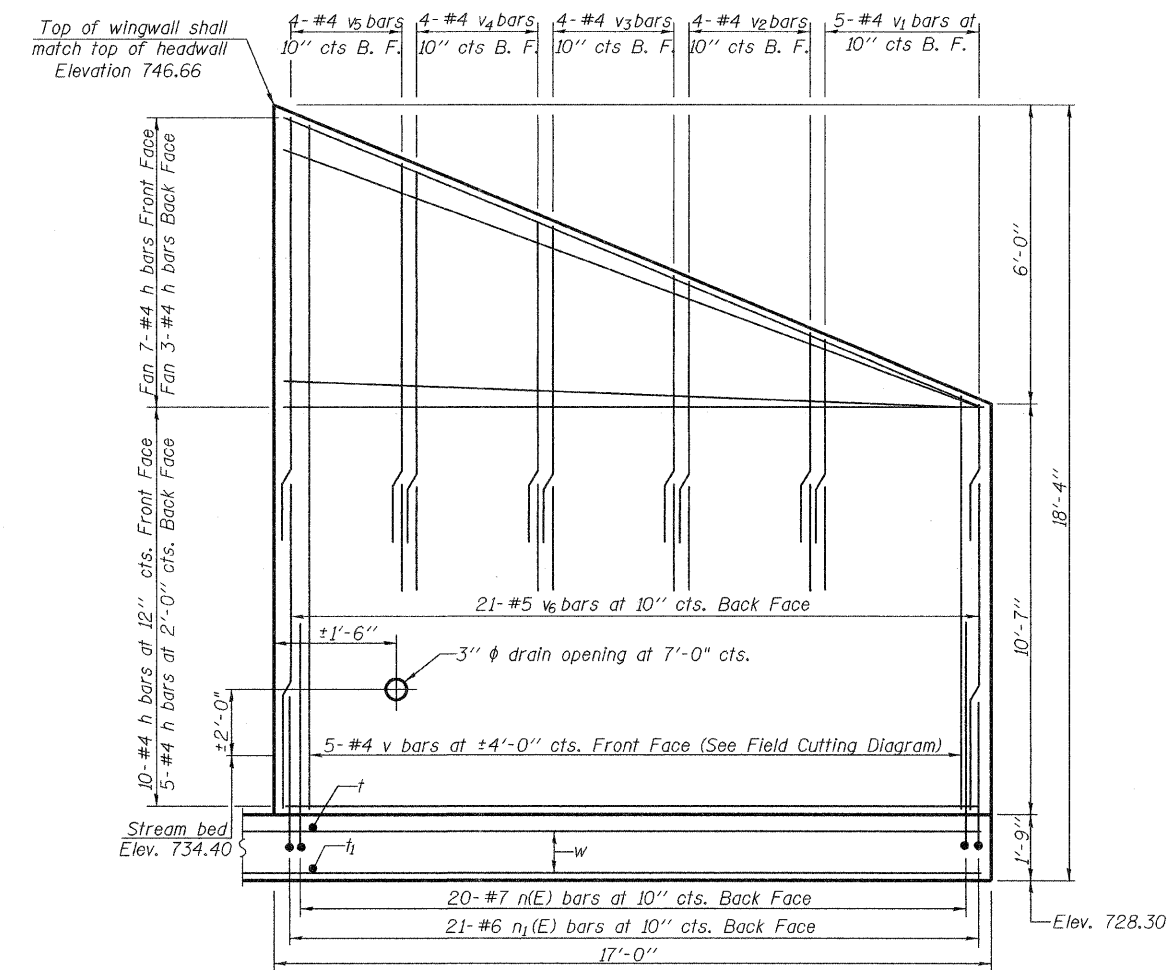


NORTHWEST WINGWALL ELEVATION
(Southeast Wingwall Similar)

MIN. BAR LAP
#4 bar = 1'-8"
#5 bar = 2'-2"

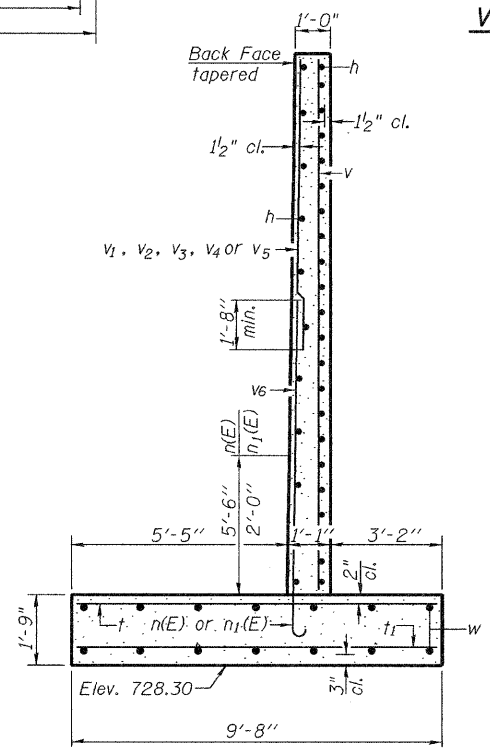


VIEW X-X

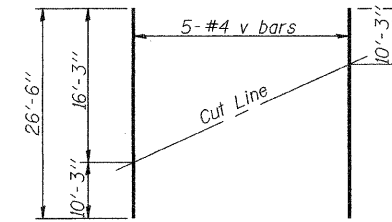


NORTHEAST WINGWALL ELEVATION
(Southwest Wingwall Similar)

Note: n(E) and n₁(E) bars are billed on sht. #4 of 11. Details of bars are shown on sht. #4 of 11.



SECTION B-B



FIELD CUTTING DIAGRAM

Order v bars full length. Cut as shown and use remainder of bars in opposite wingwall.

BILL OF MATERIAL WINGWALLS

| Bar | No. | Size | Length | Shape |
|---------------------|-----|------|---------|-------|
| h | 100 | #4 | 16'-8" | |
| v | 10 | #4 | 26'-6" | |
| v ₁ | 20 | #4 | 5'-3" | |
| v ₂ | 16 | #4 | 6'-9" | |
| v ₃ | 16 | #4 | 8'-2" | |
| v ₄ | 16 | #4 | 9'-8" | |
| v ₅ | 16 | #4 | 11'-2" | |
| v ₆ | 84 | #5 | 8'-0" | |
| Concrete Structures | | | Cu. Yd. | 35.7 |
| Reinforcement Bars | | | Pound | 2440 |

WINGWALL DETAILS
F.A.P. RT. 330 SEC. 104B-3-BR
WILL COUNTY
STATION 149+06.00
STRUCTURE NO. 099-4649

| | |
|----------|---------------------|
| DESIGNED | Dhruv P. Narieiwala |
| CHECKED | Stephen M. Ryan |
| DRAWN | h.t. duong |
| CHECKED | DPN/SMR |

November 20 2007

EXAMINED *Thomas J. Danna*
ENGINEER OF BRIDGE DESIGN

PASSED *Ralph E. Anderson*
ENGINEER OF BRIDGES AND STRUCTURES