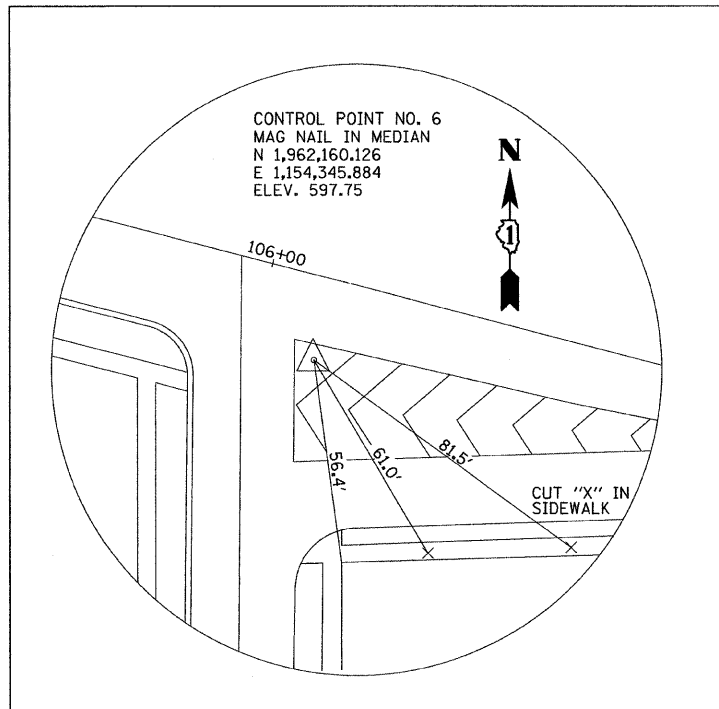
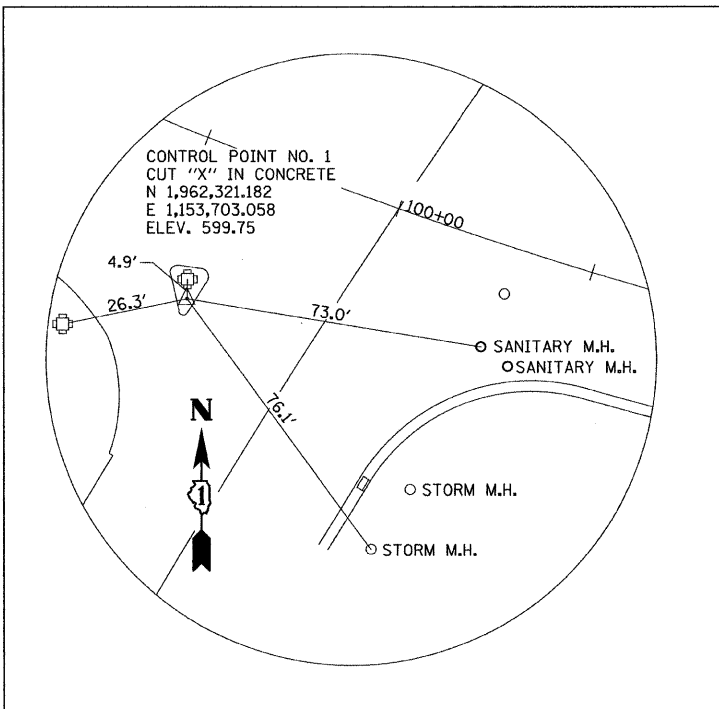
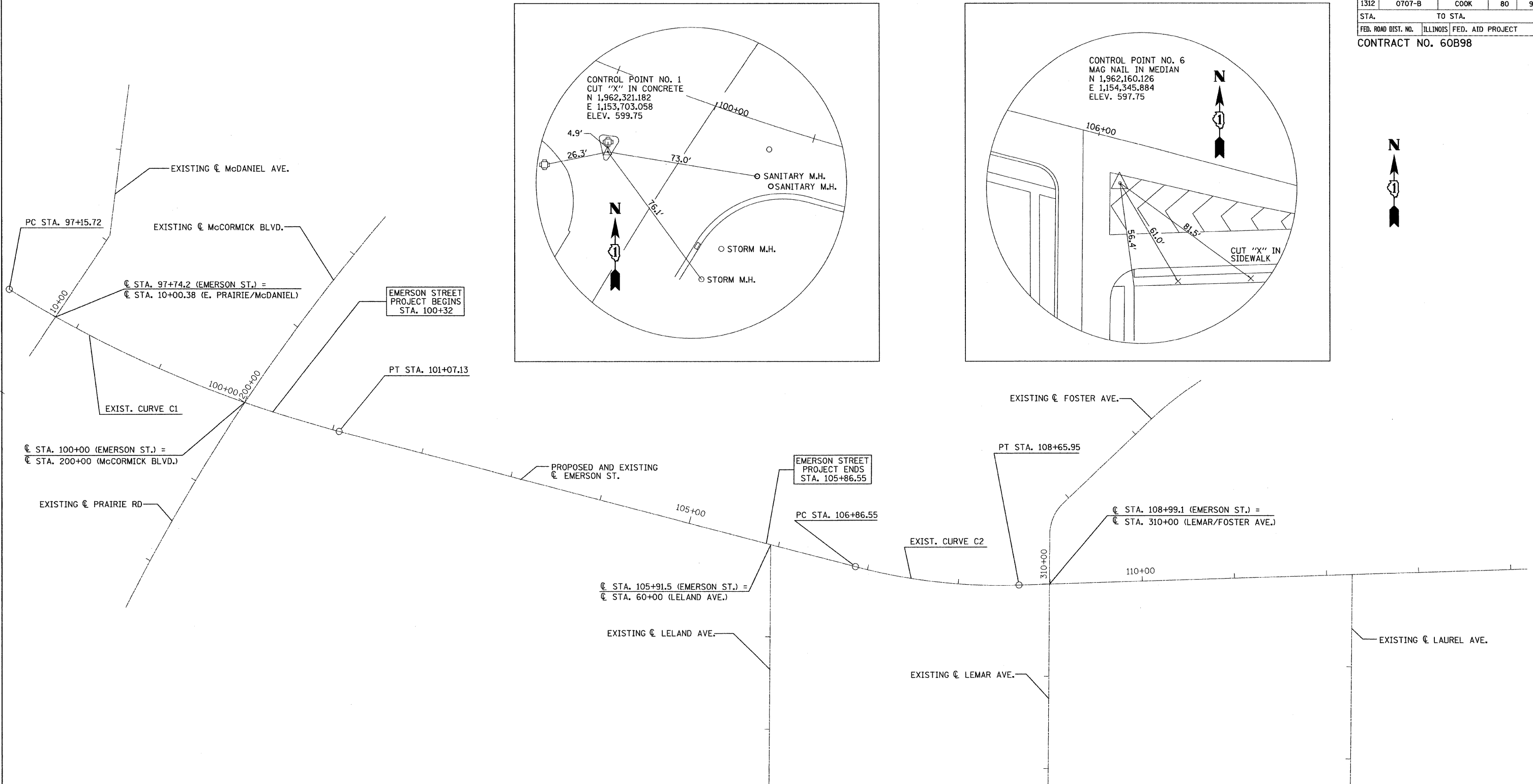


| | | | | |
|---------------------|---------|---------------------------|--------------|-----------|
| F.A.U. RTE. | SECTION | COUNTY | TOTAL SHEETS | SHEET NO. |
| 1312 | 0707-B | COOK | 80 | 9 |
| STA. | | TO STA. | | |
| FED. ROAD DIST. NO. | | ILLINOIS FED. AID PROJECT | | |
| CONTRACT NO. 60B98 | | | | |



- BM1 CROSS CUT IN SOUTHERLY PORTION OF THE CONCRETE MEDIAN IN THE SOUTHWEST QUADRANT OF GOLF RD AND McCORMICK BLVD. ELEVATION = 599.75
- BM3 MAG NAIL NEAR THE NORTHWEST CORNER OF THE PAINTED MEDIAN IN THE SOUTHEAST QUADRANT OF GOLF/EMERSON ST. AND LELAND AVENUE. ELEVATION = 597.75

| EXIST. CURVE C1 | EXIST. CURVE C2 |
|-----------------------------------|-----------------------------------|
| PI STA. = 99+12.94 | PI STA. = 107+76.88 |
| $\Delta = 17^\circ 21' 58''$ (LT) | $\Delta = 16^\circ 28' 50''$ (LT) |
| D = 4° 26' 13" | D = 9° 11' 11" |
| R = 1,291.36' | R = 623.70' |
| T = 197.22' | T = 90.32' |
| L = 391.41' | L = 179.40' |
| E = 14.97' | E = 6.51' |
| e = | e = |
| T.R. = | T.R. = |
| S.E. RUN = | S.E. RUN = |
| P.C. STA = 97+15.72 | P.C. STA = 106+86.55 |
| P.T. STA = 101+07.13 | P.T. STA = 108+65.95 |

| REVISIONS | |
|-----------|------|
| NAME | DATE |
| | |
| | |
| | |
| | |
| | |
| | |
| | |
| | |
| | |
| | |

ILLINOIS DEPARTMENT OF TRANSPORTATION
 F.A.U. ROUTE 1312 (EMERSON STREET)
**EMERSON STREET
 ALIGNMENT, TIES AND BENCHMARKS**
 SCALE: 1" = 50'
 DATE: OCT. 17, 2007
 DRAWN BY JSS
 CHECKED BY JP

W:\Emerson Street\Proposed Plans\09_Alignment.dgn
 10/17/2007
 12:45:12 PM