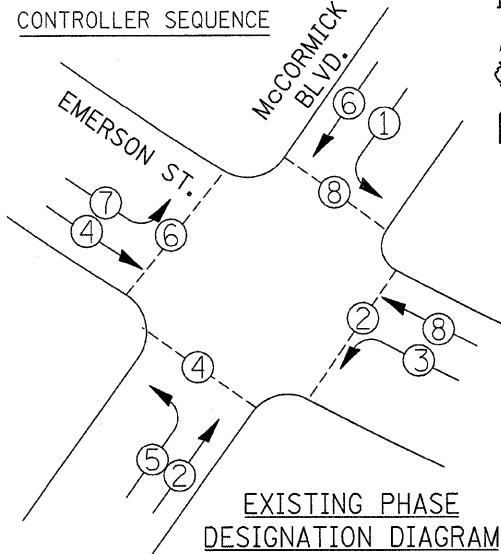


CABLE PLAN LEGEND

- | | | |
|---------------------------------------|---|--|
| EXISTING | EXISTING | |
| 8" (200mm) TRAFFIC SIGNAL SECTION | SIGNAL FACE WITH BACKPLATE. "P" INDICATES PROGRAMMED HEAD | |
| 12" (300mm) TRAFFIC SIGNAL SECTION | GROUND ROD AT HANDHOLE(H), DOUBLE HANDHOLE(H), OR CONTROLLER(C) | |
| 12" (300mm) PEDESTRIAN SIGNAL SECTION | GROUND ROD AT POST (P) OR MAST ARM POLE (MA) | |
| 12" (300mm) PEDESTRIAN SIGNAL SECTION | GROUND ROD AT ELECTRIC SERVICE INSTALLATION | |
| CONTROLLER CABINET | VEHICLE DETECTOR, INDUCTION LOOP | |
| SERVICE INSTALLATION | DENOTES NUMBER OF CONDUCTORS. ALL CABLE NO. 14 EXCEPT AS INDICATED. ALL LOOP DETECTOR CABLE TO BE SHIELDED. | |
| TELEPHONE CONNECTION | GROUND CABLE IN CONDUIT NO. 6 SOLID COPPER (GREEN) | |
| MAGNETIC DETECTOR | FIBER OPTIC CABLE IN CONDUIT, NO. 62.5/125, MM12F SM12F | |
| EMERGENCY VEHICLE LIGHT DETECTOR | | |
| CONFIRMATION BEACON | | |
| PUSHBUTTON DETECTOR | | |



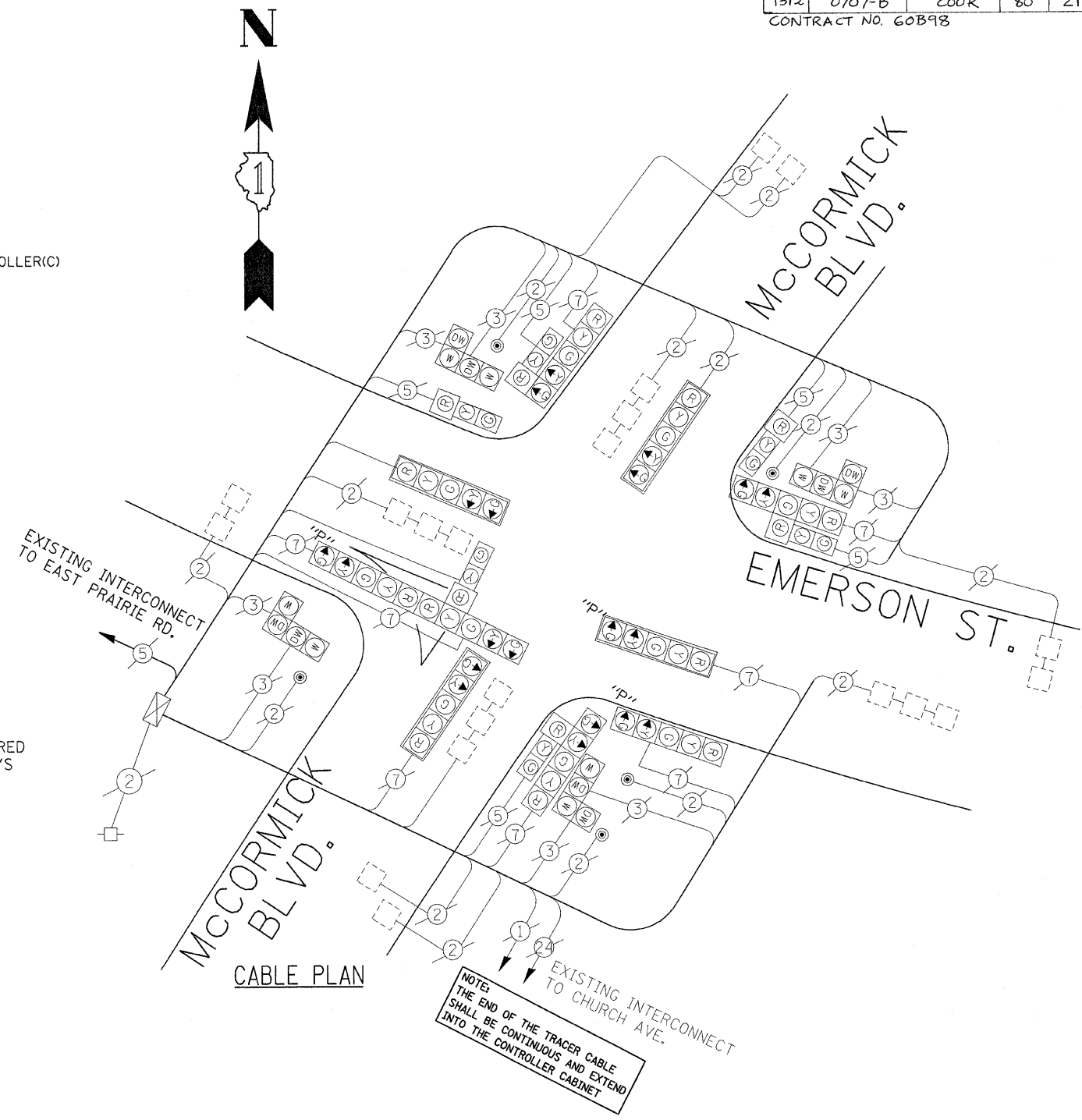
- LEGEND**
- DUAL ENTRY PHASE
 - SINGLE ENTRY PHASE
 - OVERLAP
 - PEDESTRIAN PHASE
 - * NUMBER REFERS TO ASSOCIATED PHASE

THE FOLLOWING EXISTING TRAFFIC SIGNAL EQUIPMENT SHALL BE REMOVED BY THE CONTRACTOR, SHALL REMAIN THE PROPERTY OF THE STATE AND SHALL BE DELIVERED BY THE CONTRACTOR TO THE STATE'S TRAFFIC SIGNAL MAINTENANCE CONTRACTOR'S MAIN FACILITY AS PER THE TRAFFIC SIGNAL SPECIFICATIONS.

- 1 EACH CONTROLLER AND CABINET (COMPLETE)

THE FOLLOWING ITEMS SHALL BE REMOVED BY THE CONTRACTOR AND SHALL BE DISPOSED OF BY THEM OUTSIDE OF THE RIGHT-OF-WAY AT THEIR EXPENSE. THE SALVAGE VALUE OF THE REMOVED EQUIPMENT SHALL BE REFLECTED IN THE CONTRACTOR BID PRICE.

- 4 EACH SIGNAL HEAD, 5-SECTION MAST ARM MNTD.
- 3 EACH SIGNAL HEAD, 2 FACE, 3-SECT., 5-SECT.
- 2 EACH SIGNAL HEAD, 5-SECT. BRKT. MOUNT
- 2 EACH SIGNAL HEAD, 3-SECT. BRKT. MOUNT
- 1 EACH SIGNAL HEAD, 3 FACE
- 4 EACH SIGNAL POSTS
- 4 EACH 2-FACE, PEDESTRIAN SIGNAL HEADS
- 4 EACH PUSH-BUTTONS
- 4 EACH BACKPLATE
- 1 EACH SERVICE INSTALLATION



I.D.O.T. TRAFFIC SIGNAL INSTALLATION ELECTRICAL SERVICE REQUIREMENTS					TOTAL WATTAGE
TYPE	NO. LAMPS	WATTAGE INCAND.	LED	% OPERATION	
SIGNAL (RED)	16	135	17	0.50	136.00
(YELLOW)	16	135	25	0.25	100.00
(GREEN)	16	135	15	0.25	60.00
ARROW	20	135	12	0.10	24.00
PED. SIGNAL	8	90	25	1.00	200.00
CONTROLLER	1	100	100	1.00	100.00
ILLUM. SIGN		84		0.05	

FOUNDATION (DEPTH)	FT. (m)	CABLE SLACK	FT. (m)	VERTICAL	FT. (m)
TYPE A - POST	4 (1.2)	HANDHOLE	6.5 (2.0)	ALL FOUNDATIONS	3.5 (1.0)
D - CONTROLLER	4 (1.2)	DOUBLE HANDHOLE	13 (4.0)	MAST ARM (L) POLE	20'±L-2' (6m±L-0.6m)±
E - M. ARM POLE		SIGNAL POST	2 (1.0)	BRACKET MOUNTED	13 (4.0)
24" (600mm)	10 (3.0)	CONTROLLER CAB.	1 (0.5)	PED. PUSHBUTTON	4 (1.2)
30" (750mm)	15 (4.6)	FIBER OPTIC	13 (4.0)	ELECTRIC SERVICE	13.5 (4.1)
36" (900mm)	15 (4.6)	ELECTRIC SERVICE	1 (0.5)	SERVICE TO GROUND	13.5 (4.1)
		GROUND CABLE	1 (0.5)	POST MOUNTED	6 (1.8)

ENERGY COSTS TO: TOTAL = 620.00

ILLINOIS DEPARTMENT OF TRANSPORTATION
201 WEST CENTER COURT
SCHAUMBURG, ILLINOIS 60196-1096
CONTACT: LARRY D. SHANK
PHONE: (847) 291-3214
COMPANY: COM. EDISON

FILE NAME =
USER NAME = kenthphxjbc
DESIGNED -
DRAWN -
CHECKED -
DATE -

REVISED -
REVISED -
REVISED -
REVISED -

STATE OF ILLINOIS
DEPARTMENT OF TRANSPORTATION

EXISTING CABLE PLAN
EMERSON AT MCCORMICK BLVD.

SCALE: SHEET NO. OF SHEETS STA. TO STA.

RESTORATION OF WORK AREA. RESTORATION OF THE TRAFFIC SIGNAL WORK AREA SHALL BE INCIDENTAL TO THE RELATED PAY ITEM SUCH AS FOUNDATION, CONDUIT, HANDHOLE, TRENCH AND BACKFILL, ETC., AND NO EXTRA COMPENSATION SHALL BE ALLOWED. ALL ROADWAY SURFACES SUCH AS SHOULDERS, MEDIAN, SIDEWALKS, PAVEMENT, ETC. SHALL BE REPLACED IN KIND. ALL DAMAGE TO MOWED LAWNS SHALL BE REPLACED WITH AN APPROVED SOD, AND ALL DAMAGE TO UNMOWED FIELDS SHALL BE SEEDING IN ACCORDANCE WITH STANDARD SPECIFICATIONS 252 AND 250 RESPECTIVELY.