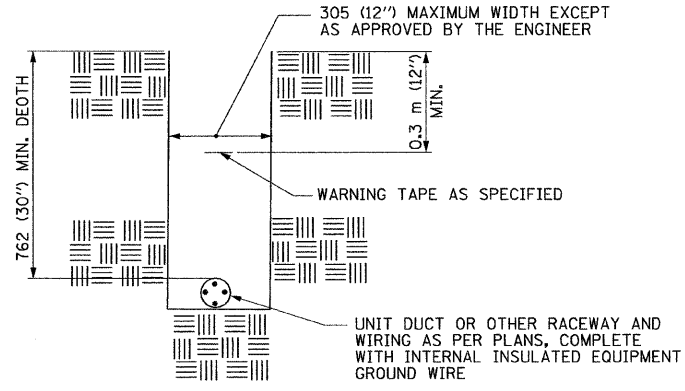
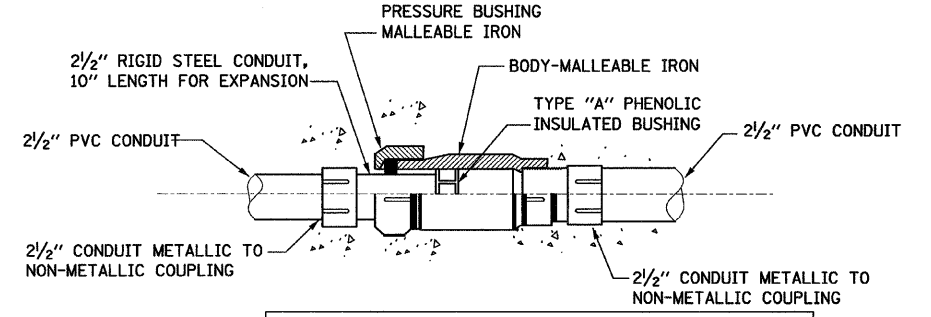


SPLICING DETAIL



TYPICAL WIRING IN TRENCH DETAIL

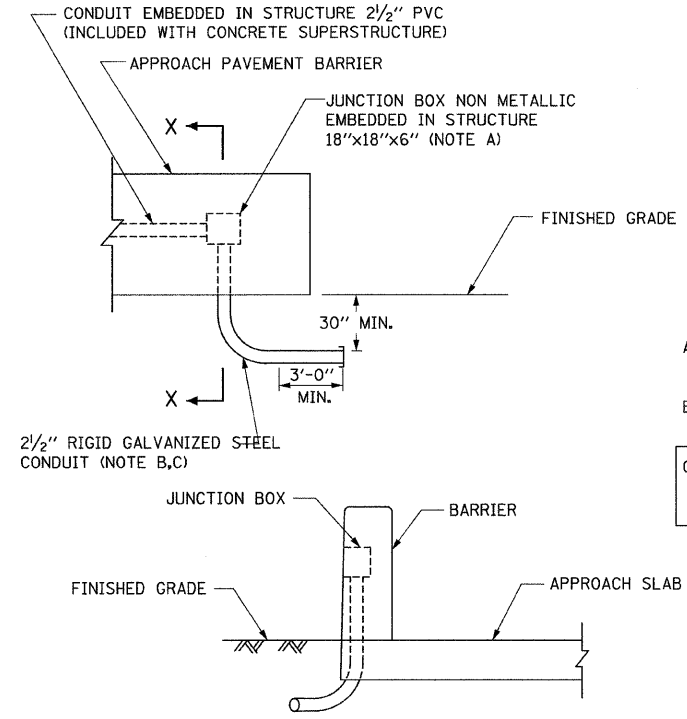
N.T.S.



NOTE:
ALL CONDUIT, FITTINGS, AND COUPLINGS SHALL BE INCLUDED IN THE COST OF CONCRETE SUPERSTRUCTURE

CONDUIT EXPANSION FITTING

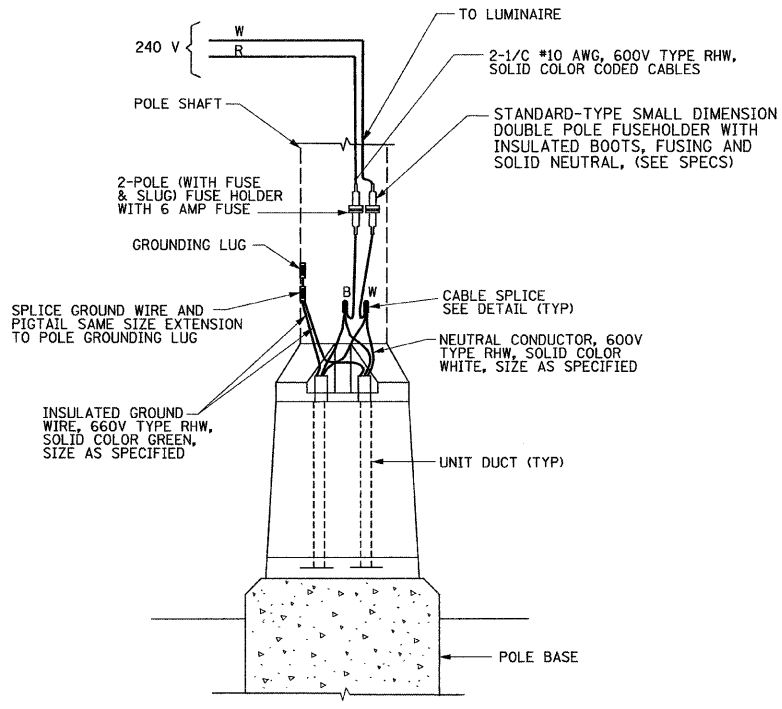
USE O-Z GEDNEY AX-B-300, OR APPROVED EQUAL



SECTION X-X

JUNCTION BOX EMBEDDED IN STRUCTURE

- A. COORDINATE PLACEMENT OF JUNCTION BOX WITH BRIDGE PLANS.
- B. COORDINATE CONDUIT PLACEMENT TO TERMINATE OUTSIDE OF PAVEMENT.
- C. COST OF RIGID GALVANIZED STEEL RACEWAY SHALL BE INCLUDED WITH JUNCTION BOX NON METALLIC EMBEDDED IN STRUCTURE.



POLE BASE WIRING DIAGRAM

SINGLE MAST ARM

N.T.S.

FILE# 10/17/2007

LTG-06

REVISIONS		ILLINOIS DEPARTMENT OF TRANSPORTATION
NAME	DATE	
		EMERSON STREET OVER NORTH SHORE CHANNEL LIGHTING DETAILS

SCALE: NONE
DATE: 10-17-07

DRAWN BY: RV
DESIGNED BY: BL
CHECKED BY: KG

K&E KAM ENGINEERING, INC.
CONSULTING ENGINEERS
707A Doris Road, Suite 205
Elgin, Illinois 60123-1569