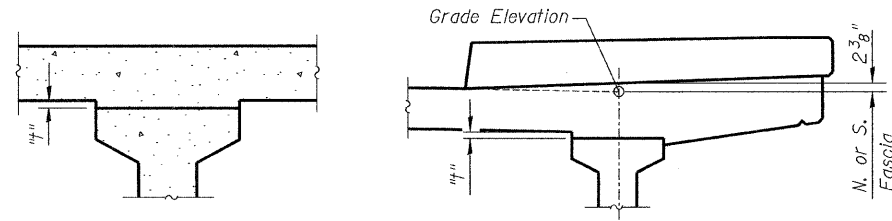


DEAD LOAD DEFLECTION DIAGRAM

(Includes weight of concrete, excluding beams).

Note:
The above deflections are not to be used in the field if the engineer is working from the grade elevations adjusted for dead load deflections as shown below.



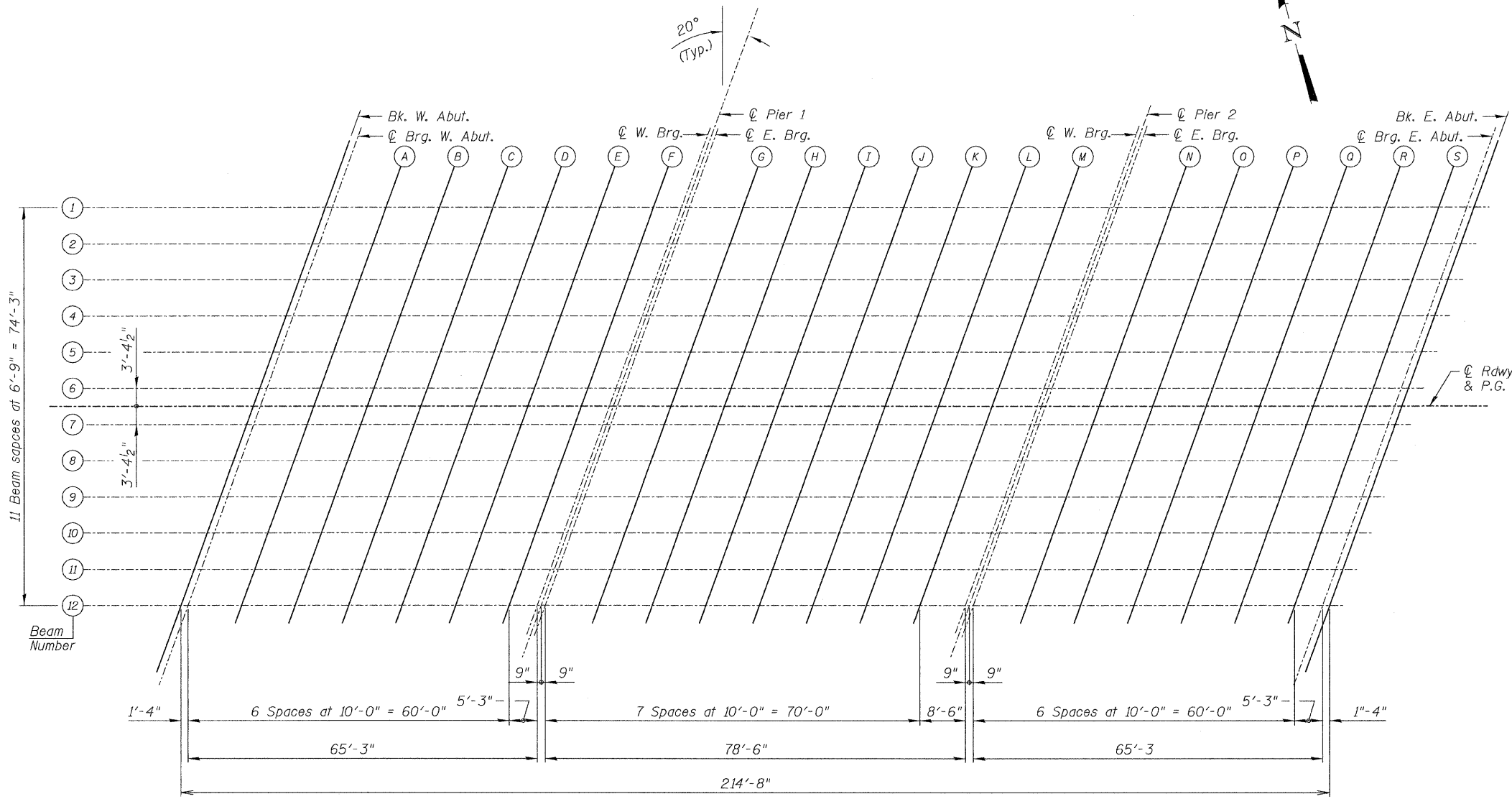
To determine "h": After all precast prestressed beams have been erected, elevations of the top flanges of the beams shall be taken at intervals shown below. These elevations subtracted from the "Theoretical Grade Elevations Adjusted for Dead Load Deflections" shown below, minus slab thickness, equals the fillet heights "h" above top flanges of beams.

FILLET HEIGHTS

ROUTE NO.	SECTION	COUNTY	TOTAL SHEETS	SHEET NO.
FAU 1312	0707-B	Cook	80	38
FED. ROAD DIST. NO.		ILLINOIS	FED. AID PROJECT-	

Contract # 60B98

SHEET NO. 4
32 SHEETS



PLAN

BEAM # 1

Location	Station	Offset	Theoretical Grade Elevations	Theoretical Grade Elevations Adjusted For Dead Load Deflection
Back of West Abut.	101+90.80	-37.13	601.80	601.80
CL Brg. W. Abut.	101+92.13	-37.13	601.82	601.82
A	102+02.13	-37.13	601.94	601.97
B	102+12.13	-37.13	602.05	602.10
C	102+22.13	-37.13	602.14	602.21
D	102+32.13	-37.13	602.23	602.29
E	102+42.13	-37.13	602.30	602.34
F	102+52.13	-37.13	602.36	602.37
CL W. Brg. Pier 1	102+57.38	-37.13	602.38	602.38
CL E. Brg. Pier 1	102+58.88	-37.13	602.39	602.39
G	102+68.88	-37.13	602.43	602.48
H	102+78.88	-37.13	602.45	602.55
I	102+88.88	-37.13	602.46	602.60
J	102+98.88	-37.13	602.46	602.61
K	103+08.88	-37.13	602.45	602.58
L	103+18.88	-37.13	602.43	602.52
M	103+28.88	-37.13	602.39	602.44
CL W. Brg. Pier 2	103+37.38	-37.13	602.35	602.35
CL E. Brg. Pier 2	103+38.88	-37.13	602.34	602.34
N	103+48.88	-37.13	602.28	602.31
O	103+58.88	-37.13	602.20	602.26
P	103+68.88	-37.13	602.12	602.18
Q	103+78.88	-37.13	602.02	602.08
R	103+88.88	-37.13	601.90	601.95
S	103+98.88	-37.13	601.78	601.80
CL Brg. E. Abut.	104+04.13	-37.13	601.71	601.71
Back of East Abut.	104+05.46	-37.13	601.69	601.69

DESIGNED	SRT
CHECKED	JJI
DRAWN	JSS
CHECKED	JJI

Bollinger, Lach & Associates, Inc.

PI-E 11-1-06

TOP OF SLAB ELEVATIONS
EMERSON STREET OVER
NORTH SHORE CHANNEL
(PUBLIC BODY OF WATER)
F.A.U. ROUTE 1312 SECTION 0707-B
COOK COUNTY STA. 102+84.62
STRUCTURE NUMBER 016-2858