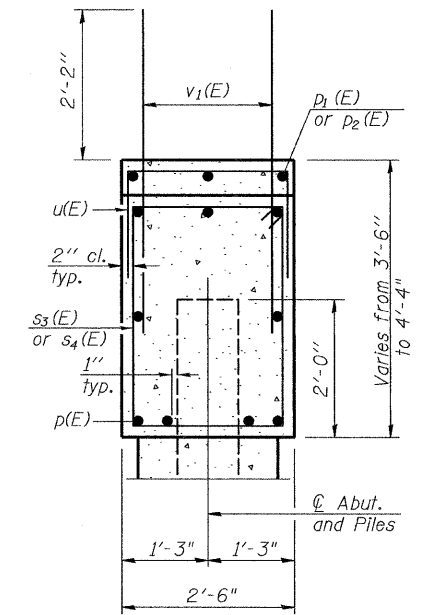
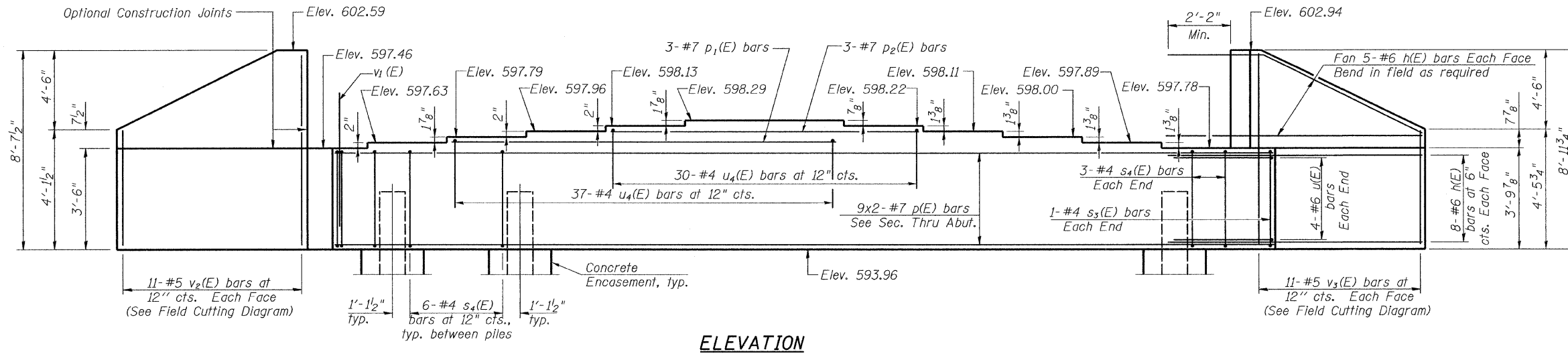


STATE OF ILLINOIS
DEPARTMENT OF TRANSPORTATION

ROUTE NO.	SECTION	COUNTY	TOTAL SHEETS	SHEET	SHEET NO. 22
FAU 1312	0707-B	COOK	80	56	32 SHEETS
FED. ROAD DIST. NO.	ILLINOIS	FED. AID PROJECT			

Contract # 60B98

Notes: Four steps monolithically with cap.



SEC. THRU ABUT.

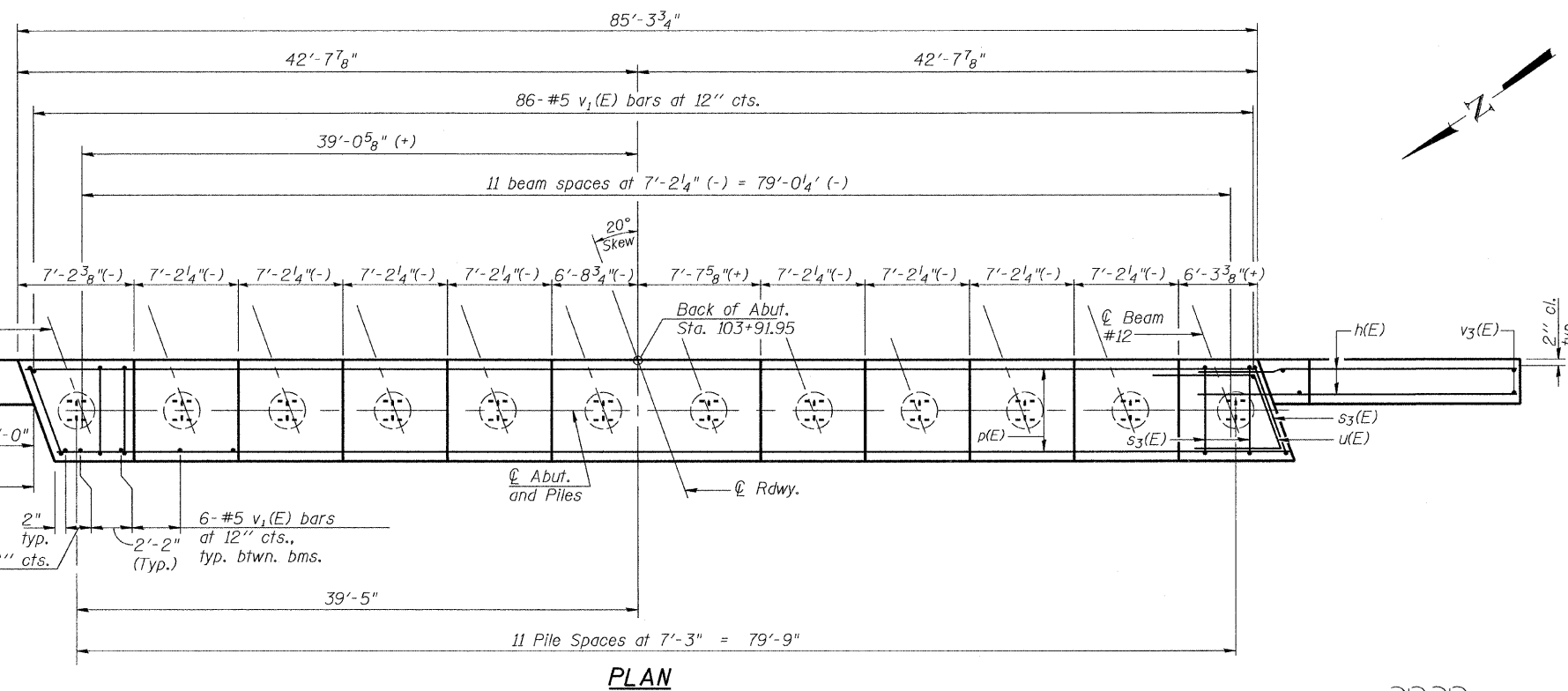
BILL OF MATERIAL

Bar	No.	Size	Length	Shape
h(E)	52	#6	13'-2"	
p(E)	18	#7	44'-6"	
p1(E)	3	#7	35'-9"	
p2(E)	3	#7	28'-6"	
s3(E)	2	#4	11'-9"	□
s4(E)	72	#4	11'-5"	□
u(E)	8	#6	8'-0"	⌒
u1(E)	67	#4	5'-6"	⌒
v1(E)	156	#5	4'-4"	
v2(E)	11	#5	12'-2"	
v3(E)	11	#5	13'-0"	
Structure Excavation		Cu. Yd.	97	
Concrete Structures		Cu. Yd.	36.2	
Reinforcement Bars, Epoxy Coated		Pound	5150	
Furnishing-Steel Piles, HP 14x89		Foot	1045	
Driving Piles		Foot	1045	
Test Pile, HP 14x89		Each	1	
Concrete Encasement		Cu. Yd.	6.7	
Pile Shoes		Each	12	

For details of piles and Concrete Encasement, see sheet 26 of 32.
Bars indicated thus 9x2 - #7 etc. indicates 9 lines of bars with 2 lengths per line.
Minimum lap #7 bar = 3'-10".

EAST ABUTMENT

EMERSON STREET OVER
NORTH SHORE CHANNEL
(PUBLIC BODY OF WATER)
F.A.U. ROUTE 1312 SECTION 0707-B
COOK COUNTY STA. 102+84.62
STRUCTURE NUMBER 016-2858



PLAN

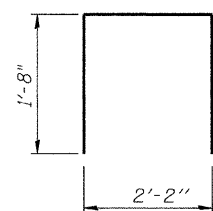
PILE DATA

Type: Steel HP 14x89
Nominal Required Bearing: 705 kips
Factored Resistance Available: 235 kips
Est. Length: 95 feet
No. Production Piles: 11
No. Test Piles: 1

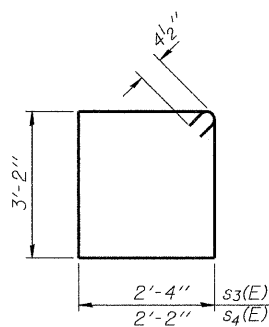
DESIGNED	SRT
CHECKED	JJI
DRAWN	JSS
CHECKED	JJI

BL Bollinger, Lach & Associates, Inc.

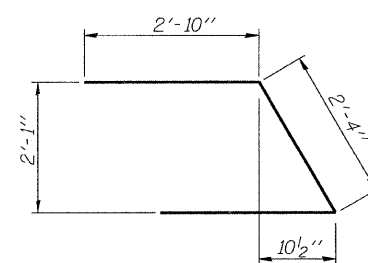
AI-L 11-1-06



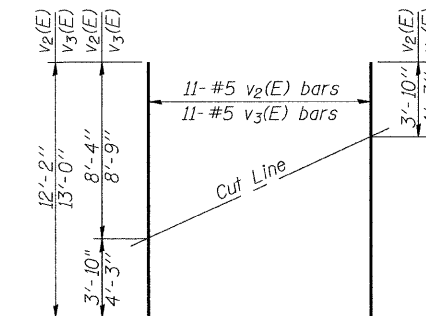
BAR u1(E)



BARS s3(E) & s4(E)



BAR u(E)



FIELD CUTTING DIAGRAM

Order v2(E) and v3(E) Full length. Cut as shown and use remainder of bars in opposite face.