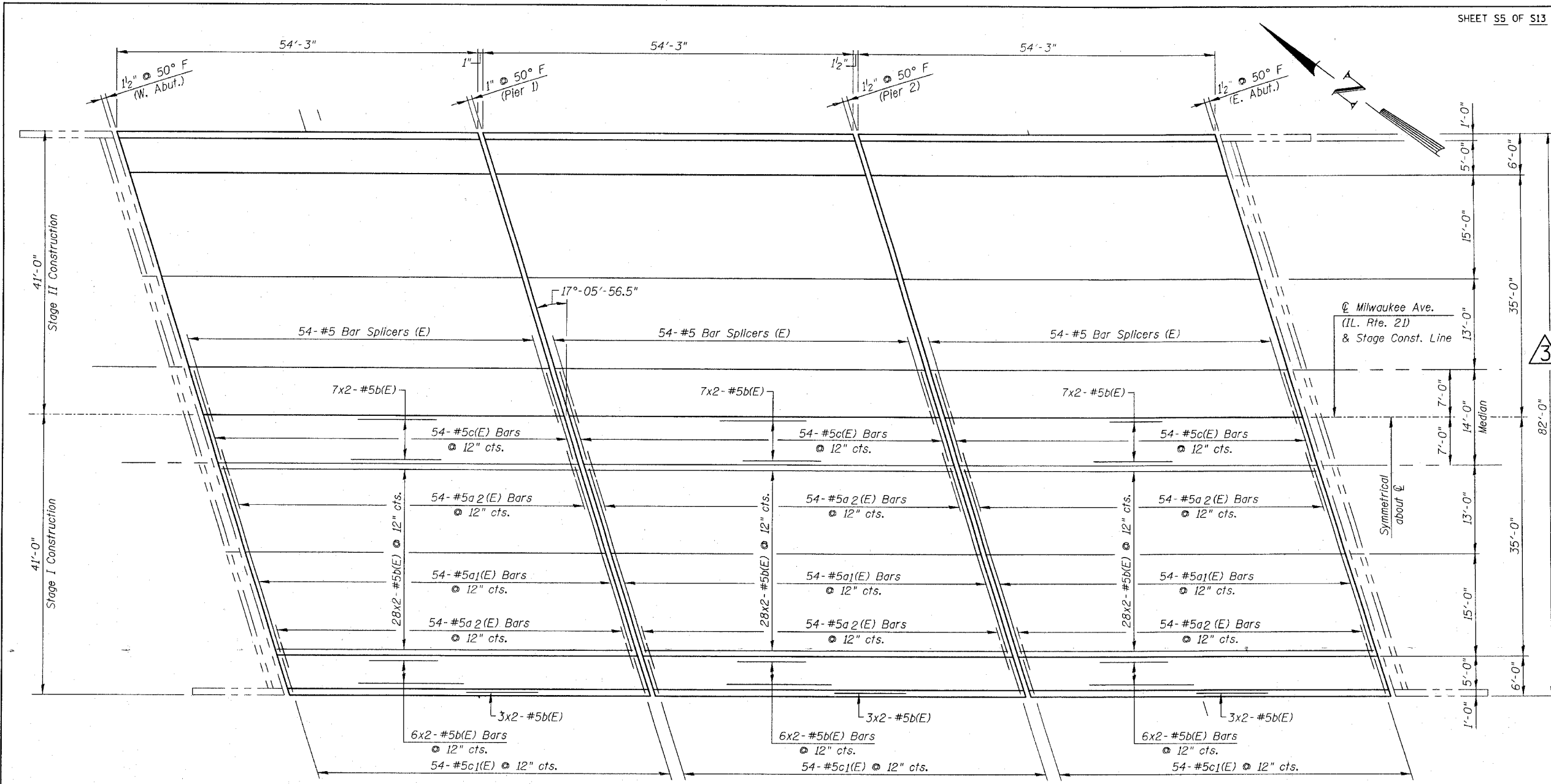


FEDERAL AID ROUTE NO.	SECTION	COUNTY	TOTAL SHEETS	SHEET NO.
F.A. RTE. 374 (IL. RTE. 21)	211-K-V-X-B	COOK	36	17
STA.	TO STA.			
FED. ROAD DIST. NO.	ILLINOIS	FED. AID PROJECT		

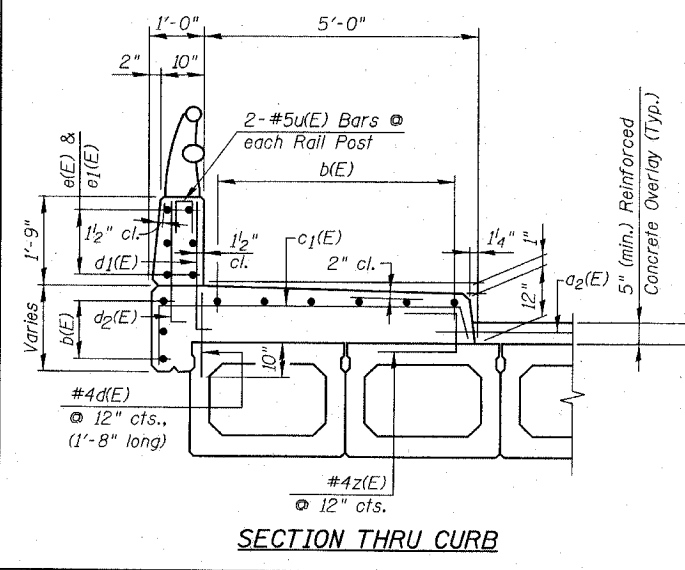
CONTRACT NO. 60C20

BILL OF MATERIAL

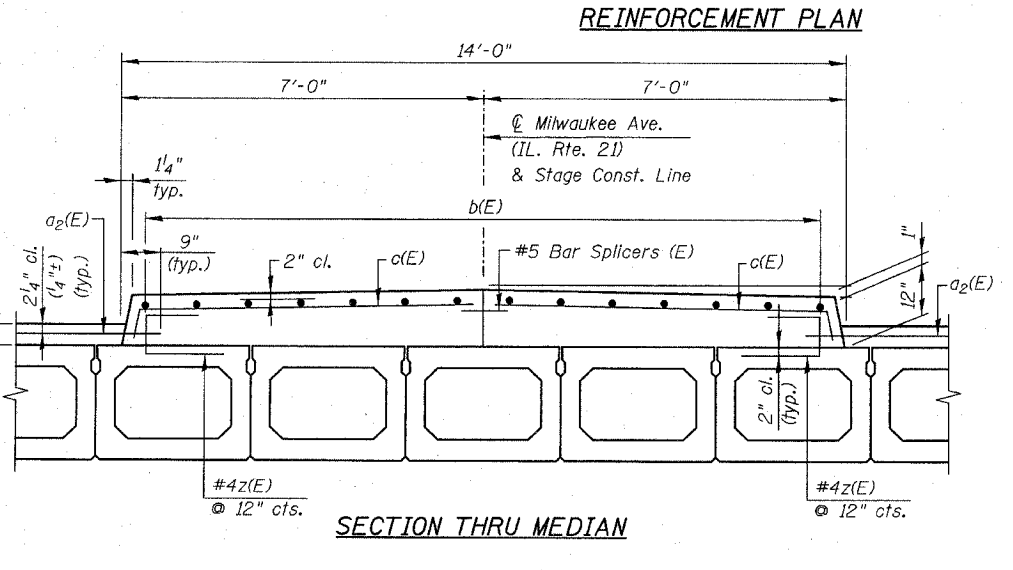
Bar	No.	Size	Length	Shape
a ₁ (E)	324	#5	28'-11"	—
a ₂ (E)	648	#5	3'-9"	—
b(E)	528	#5	27'-10"	—
c(E)	324	#5	7'-5"	┌
c ₁ (E)	324	#5	8'-1"	┌
d ₁ (E)	324	#6	3'-4 1/2"	J
d ₂ (E)	324	#4	3'-1 1/2"	J
e(E)	72	#4	17'-8"	—
e ₁ (E)	36	#4	18'-0"	—
u(E)	84	#4	2'-0"	┐
Concrete Superstructure			Cu. Yd.	182.6
Reinforcement Bars, Epoxy Coated			Pound	36,590
Silicone Joint Sealer 1 In.			Foot	86
Silicone Joint Sealer 1/2 In.			Foot	258
Bar Splicers			Each	162
Concrete Wearing Surface			Sq. Yd.	1,020



REINFORCEMENT PLAN

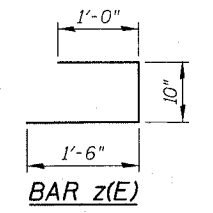


SECTION THRU CURB

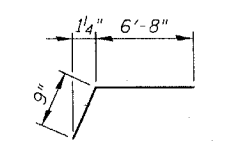


SECTION THRU MEDIAN

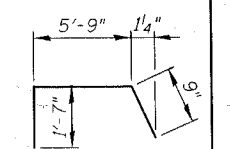
MIN. LAP:
#5 Bars = 1'-8"



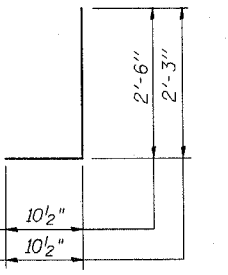
BAR z(E)



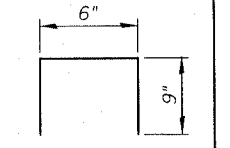
BAR c(E)



BAR c1(E)



BARS d₁(E) & d₂(E)



BAR u(E)

NOTE:
#4d(E) Bars & #4z(E) Bars are to be included with P.P.C. Deck Beams, 27"

REVISIONS	
NAME	DATE
ADDENDUM 3	12-20-07

ILLINOIS DEPARTMENT OF TRANSPORTATION
REINFORCEMENT PLAN
 MILWAUKEE AVE. (IL. RTE. 21) OVER UNION PACIFIC RAILROAD
 F.A. RTE. 374 (S.B.I. RTE. 21)
 SECTION: 211-K-V-X-B
 COOK COUNTY STATION 30+71.94
 STRUCTURE NO. 016-0243

SCALE: DRAWN BY: F.M.
 DATE: JULY 23, 2007 CHECKED BY: B.N.S.

CHRISTIAN-ROGE & ASSOC., INC.
 CHICAGO ILLINOIS