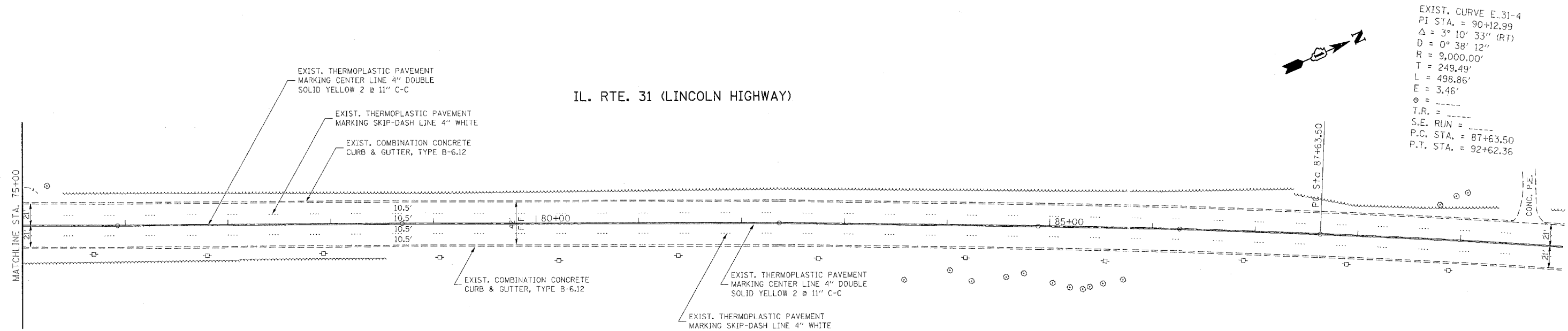


IL. RTE. 31 (LINCOLN HIGHWAY)



EXIST. CURVE E-31-4  
 PI STA. = 90+12.99  
 $\Delta = 3^\circ 10' 33''$  (RT)  
 $D = 0^\circ 38' 12''$   
 $R = 9,000.00'$   
 $T = 249.49'$   
 $L = 498.86'$   
 $E = 3.46'$   
 $e =$   
 $T.R. =$   
 $S.E. RUN =$   
 $P.C. STA. = 87+63.50$   
 $P.T. STA. = 92+62.36$

LEGEND

- |   |   |
|---|---|
| <ul style="list-style-type: none"> <li>(A) THERMOPLASTIC PAVEMENT MARKING<br/>EDGE LINE, 4" SOLID WHITE</li> <li>(B) THERMOPLASTIC PAVEMENT MARKING<br/>CENTER LINE, 4" DOUBLE<br/>SOLID YELLOW 2 @ 11" C-C</li> <li>(C) THERMOPLASTIC PAVEMENT MARKING<br/>SKIP-DASH LINE, 4" WHITE</li> <li>(D) POLYUREA PAVEMENT MARKING<br/>CENTER LINE, 4" DOUBLE<br/>SOLID YELLOW 2 @ 11" C-C</li> <li>(E) POLYUREA PAVEMENT MARKING<br/>SKIP-DASH LINE 4" WHITE</li> <li>(F) PAVEMENT MARKING TAPE, TYPE III<br/>EDGE LINE, 4" WHITE</li> <li>(G) PAVEMENT MARKING TAPE, TYPE III<br/>CENTER LINE, 4" DOUBLE<br/>SOLID YELLOW 2 @ 11" C-C</li> <li>(H) PAVEMENT MARKING TAPE, TYPE III<br/>SKIP-DASH LINE, 4" WHITE</li> </ul> | <ul style="list-style-type: none"> <li> WORK ZONE</li> <li> REMOVAL</li> <li> IMPACT ATTENUATOR</li> <li> TRAFFIC FLOW ARROW</li> <li> TEMPORARY BARRIER WALL (STATE OWNED)</li> <li> BARRICADE TYPE I OR TYPE II OR REFLECTORIZED DRUM<br/>OR VERTICAL PANEL WITH STEADY BURNING LIGHTS AT 50' C-C</li> <li> TYPE III BARRICADE WITH STEADY BURNING LIGHTS<br/>TO ADEQUATELY PROTECT THE AREA SHOWN.</li> <li> CONSTRUCTION SIGN AND REFERENCE NUMBER<br/>(REFER TO SIGN DETAIL LEGEND SHEET)</li> </ul> |
|---|---|

FILE NAME =	USER NAME = galbarrb	DESIGNED -	REVISED -	<b>STATE OF ILLINOIS DEPARTMENT OF TRANSPORTATION</b>	<b>FAU 3887: ILL. RTE. 31 (LINCOLN HIGHWAY) OVER MILL CREEK EXISTING ROADWAY AND PAVEMENT MARKING PLAN</b>			F.A.U. RTE.	SECTION	COUNTY	TOTAL SHEETS	SHEET NO.
ca:\proj\state\dl18207\design_ae.dgn		DRAWN -	REVISED -		3887	AR-B	KANE	43	7			
PLOT SCALE = 50.0000 1 / IN.		CHECKED -	REVISED -		SCALE: SHEET NO. OF SHEETS STA. TO STA.			CONTRACT NO. 60C23				
PLOT DATE = 11/5/2007		DATE -	REVISED -		FED. ROAD DIST. NO. 1 ILLINOIS FED. AID PROJECT							