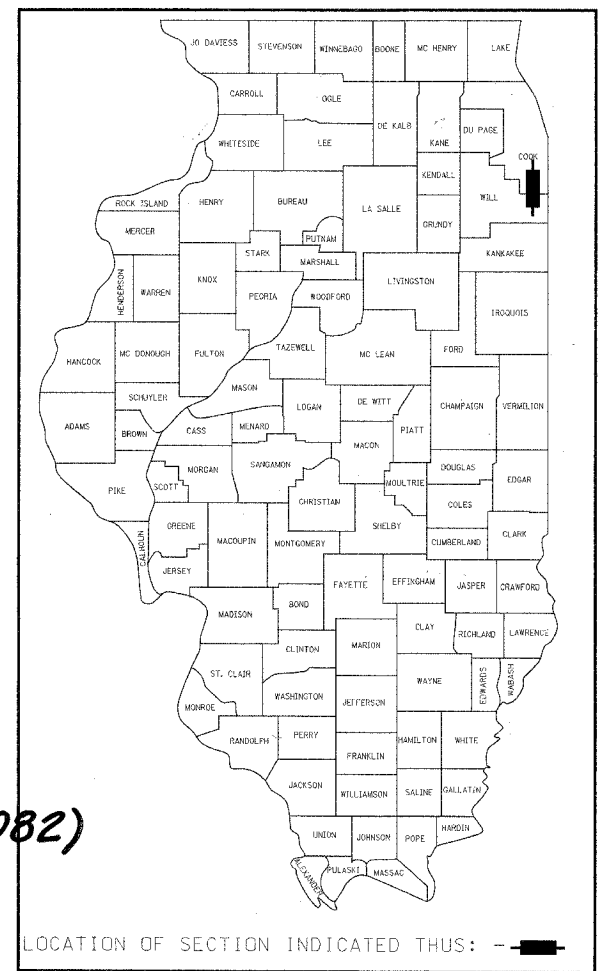


60D20

F.A.P. RTE.	SECTION	COUNTY	TOTAL SHEETS	SHEET NO.
332	2007-037TS	COOK/WILL	34	1
F.H.W.A. REG.	ILLINOIS	PROJECT		
D-91-343-07				

STATE OF ILLINOIS
DEPARTMENT OF TRANSPORTATION
DIVISION OF HIGHWAYS
**PLANS FOR PROPOSED
FEDERAL AID HIGHWAY**

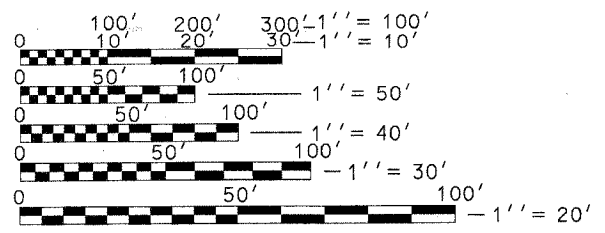
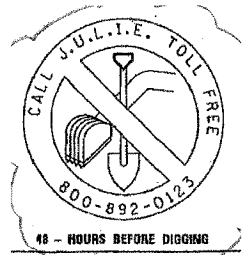
DISTRICT 1
F.A.P. 332 - ILL. ROUTE 394
(BISHOP FORD FREEWAY)
FROM SAUK TRAIL TO EXCHANGE STREET
AND AT RICHTON ROAD
COOK AND WILL COUNTY
TRAFFIC SIGNAL INSTALLATION AND
FIBER OPTIC INTERCONNECT
SECTION 2007-037TS
C-91-343-07
BLOOM & CRETE TOWNSHIP



INDEX OF SHEETS

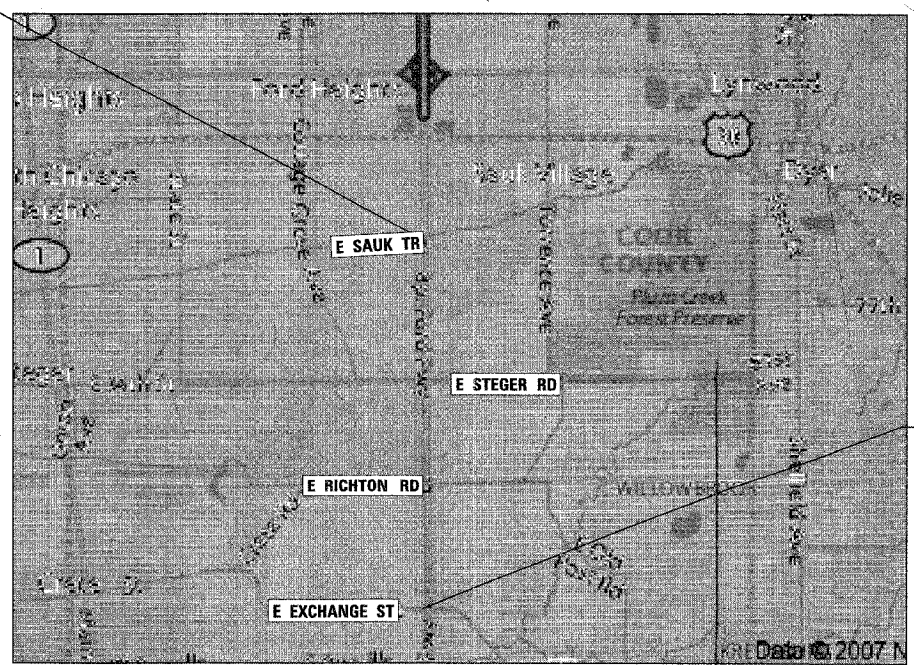
1. TITLE SHEET
2. SUMMARY OF QUANTITIES
3. STANDARD TRAFFIC SIGNAL DESIGN DETAILS - SHEET 1 OF 4
4. STANDARD TRAFFIC SIGNAL DESIGN DETAILS - SHEET 2 OF 4
5. STANDARD TRAFFIC SIGNAL DESIGN DETAILS - SHEET 3 OF 4
6. STANDARD TRAFFIC SIGNAL DESIGN DETAILS - SHEET 4 OF 4
7. ILL.394 AT SAUK TRAIL TRAFFIC SIGNAL MODIFICATION PLAN - SHEET 1 OF 2
8. ILL.394 AT SAUK TRAIL TRAFFIC SIGNAL MODIFICATION PLAN - SHEET 2 OF 2
9. ILL.394 AT SAUK TRAIL
-CABLE PLAN
-PHASE DESIGNATION DIAGRAM
-SCHEDULE OF QUANTITIES
10. ILL.394 AT STEGER RD. TRAFFIC SIGNAL MODIFICATION PLAN - SHEET 1 OF 2
11. ILL.394 AT STEGER RD. TRAFFIC SIGNAL MODIFICATION PLAN - SHEET 2 OF 2
12. ILL.394 AT STEGER RD
-CABLE PLAN
-PHASE DESIGNATION DIAGRAM
-EMERGENCY VEHICLE PREEMPTION SEQUENCE
-SCHEDULE OF QUANTITIES
13. ILL. 394 AT RICHTON ROAD TEMPORARY TRAFFIC SIGNAL INSTALLATION
14. ILL. 394 AT RICHTON ROAD
-CABLE PLAN
-PHASE DESIGNATION DIAGRAM
-EMERGENCY VEHICLE PREEMPTION SEQUENCE
-SCHEDULE OF QUANTITIES
15. ILL. 394 AT EXCHANGE AVE. TRAFFIC SIGNAL MODIFICATION PLAN
16. ILL. 394 AT EXCHANGE AVE.
-CABLE PLAN
-PHASE DESIGNATION DIAGRAM
-EMERGENCY VEHICLE PREEMPTION SEQUENCE
-SCHEDULE OF QUANTITIES
17. INTERCONNECT PLAN - SHEET 1 OF 6
18. INTERCONNECT PLAN - SHEET 2 OF 6
19. INTERCONNECT PLAN - SHEET 3 OF 6
20. INTERCONNECT PLAN - SHEET 4 OF 6
21. INTERCONNECT PLAN - SHEET 5 OF 6
22. INTERCONNECT PLAN - SHEET 6 OF 6
23. INTERCONNECT - SCHEMATIC

24.- 34. DISTRICT ONE DETAILS



STANDARD DRAWINGS

701006	805001
701011	814001
701101	814006
701301	857001
701406	877001
701601	878001
701701	880001
701901	880006
720001	886001



LOCATION MAP

PROJ. NO. ACHSIP-0322(082)

PROJECT BEGINS
STA. 365+21.37

PROJECT ENDS
STA. 526+13.12

STATE OF ILLINOIS
DEPARTMENT OF TRANSPORTATION
DIVISION OF HIGHWAYS

SUBMITTED Oct 31 2007
Diana M. O'Keefe
DEPUTY DIRECTOR OF HIGHWAYS, REGION ENGINEER

December 7, 2007
Eric E. Harnett
ENGINEER OF DESIGN AND ENVIRONMENT

December 7, 2007
Christine M. Reed
DIRECTOR OF HIGHWAYS, CHIEF ENGINEER

20

PRINTED BY AUTHORITY OF THE STATE OF ILLINOIS

DISTRICT ONE-BUREAU OF TRAFFIC: STEVE TRAVIA/DARYLE DREW (847) 705-4420

CONTRACT NO. 60D20

PREPARED BY Stan Inesi
TRAFFIC ENGINEER
DATE 10/31/07