

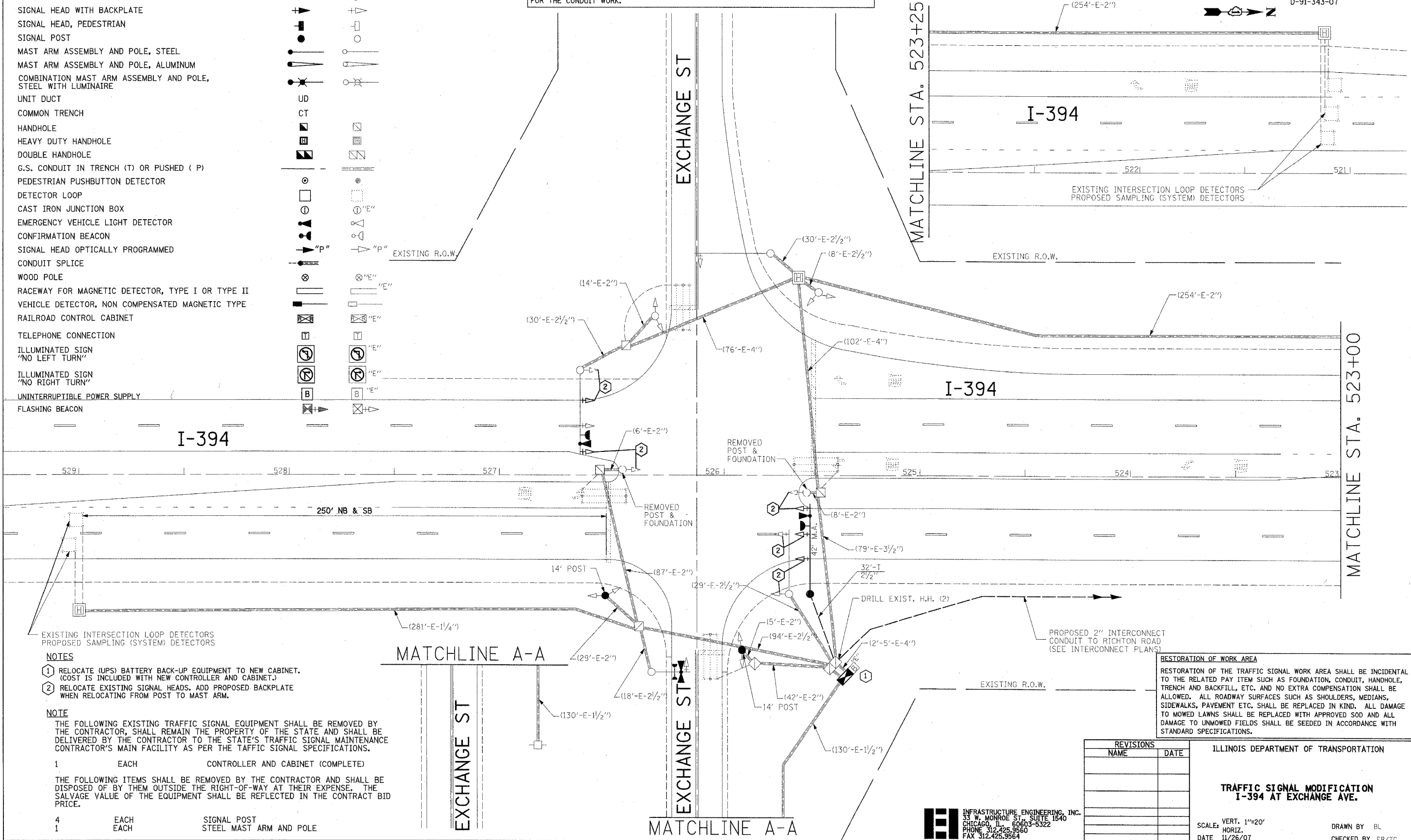
F.A.U. RTE.	SECTION	COUNTY	TOTAL SHEETS	SHEET NO.
332	2007-037TS	COOK/WILL	34	15
STA.		TO STA.		
FED. ROAD DIST. NO.		ILLINOIS FED. AID PROJECT		

D-91-343-07

TRAFFIC SIGNAL LEGEND

CONTROLLER	PROPOSED	EXISTING
SERVICE INSTALLATION		
SIGNAL HEAD		
SIGNAL HEAD WITH BACKPLATE		
SIGNAL HEAD, PEDESTRIAN		
SIGNAL POST		
MAST ARM ASSEMBLY AND POLE, STEEL		
MAST ARM ASSEMBLY AND POLE, ALUMINUM		
COMBINATION MAST ARM ASSEMBLY AND POLE, STEEL WITH LUMINAIRE		
UNIT DUCT	UB	
COMMON TRENCH	CT	
HANDHOLE		
HEAVY DUTY HANDHOLE		
DOUBLE HANDHOLE		
G.S. CONDUIT IN TRENCH (T) OR PUSHED (P)	T	
PEDESTRIAN PUSHBUTTON DETECTOR		
DETECTOR LOOP		
CAST IRON JUNCTION BOX		
EMERGENCY VEHICLE LIGHT DETECTOR		
CONFIRMATION BEACON		
SIGNAL HEAD OPTICALLY PROGRAMMED	"P"	
CONDUIT SPLICE		
WOOD POLE		
RACEWAY FOR MAGNETIC DETECTOR, TYPE I OR TYPE II		
VEHICLE DETECTOR, NON COMPENSATED MAGNETIC TYPE		
RAILROAD CONTROL CABINET		
TELEPHONE CONNECTION		
ILLUMINATED SIGN "NO LEFT TURN"		
ILLUMINATED SIGN "NO RIGHT TURN"		
UNINTERRUPTIBLE POWER SUPPLY		
FLASHING BEACON		

NOTE: THE CONTRACTOR WILL BE RESPONSIBLE FOR LOCATING AND MAINTAINING ALL UNDERDRAIN OUTLETS AND THAT ANY DAMAGES TO UNDERDRAIN OUTLETS CAUSED BY THE CONTRACTOR'S OPERATION SHALL BE REPAIRED TO THE SATISFACTION OF THE ENGINEER AT NO ADDITIONAL COST. ANY COST TO REPAIR, REMOVE, AND REPLACE OR RELOCATE CONFLICTING UNDERDRAIN OUTLETS, SHALL BE INCLUDED IN UNIT PRICE BID FOR THE CONDUIT WORK.



- NOTES**
- 1 RELOCATE (UPS) BATTERY BACK-UP EQUIPMENT TO NEW CABINET. (COST IS INCLUDED WITH NEW CONTROLLER AND CABINET.)
 - 2 RELOCATE EXISTING SIGNAL HEADS. ADD PROPOSED BACKPLATE WHEN RELOCATING FROM POST TO MAST ARM.

NOTE
THE FOLLOWING EXISTING TRAFFIC SIGNAL EQUIPMENT SHALL BE REMOVED BY THE CONTRACTOR, SHALL REMAIN THE PROPERTY OF THE STATE AND SHALL BE DELIVERED BY THE CONTRACTOR TO THE STATE'S TRAFFIC SIGNAL MAINTENANCE CONTRACTOR'S MAIN FACILITY AS PER THE TRAFFIC SIGNAL SPECIFICATIONS.

1	EACH	CONTROLLER AND CABINET (COMPLETE)
4	EACH	SIGNAL POST
1	EACH	STEEL MAST ARM AND POLE

RESTORATION OF WORK AREA
RESTORATION OF THE TRAFFIC SIGNAL WORK AREA SHALL BE INCIDENTAL TO THE RELATED PAY ITEM SUCH AS FOUNDATION, CONDUIT, HANDHOLE, TRENCH AND BACKFILL, ETC. AND NO EXTRA COMPENSATION SHALL BE ALLOWED. ALL ROADWAY SURFACES SUCH AS SHOULDERS, MEDIANS, SIDEWALKS, PAVEMENT ETC. SHALL BE REPLACED IN KIND. ALL DAMAGE TO MOWED LAWNS SHALL BE REPLACED WITH APPROVED SOD AND ALL DAMAGE TO UNMOWED FIELDS SHALL BE SEEDED IN ACCORDANCE WITH STANDARD SPECIFICATIONS.

REVISIONS	
NAME	DATE

ILLINOIS DEPARTMENT OF TRANSPORTATION

**TRAFFIC SIGNAL MODIFICATION
I-394 AT EXCHANGE AVE.**

SCALE: VERT. 1"=20'
HORIZ. DATE 11/26/07

DRAWN BY BL
CHECKED BY ER/TC

INFRASTRUCTURE ENGINEERING, INC.
33 W. MONROE ST., SUITE 1540
CHICAGO, IL 60603-5322
PHONE 312.425.9560
FAX 312.425.9564

PLOT DATE = 11/26/2007
PLOT NAME = TRF01
PLOT SCALE = #SCALE#
USER NAME = #P-NAME#