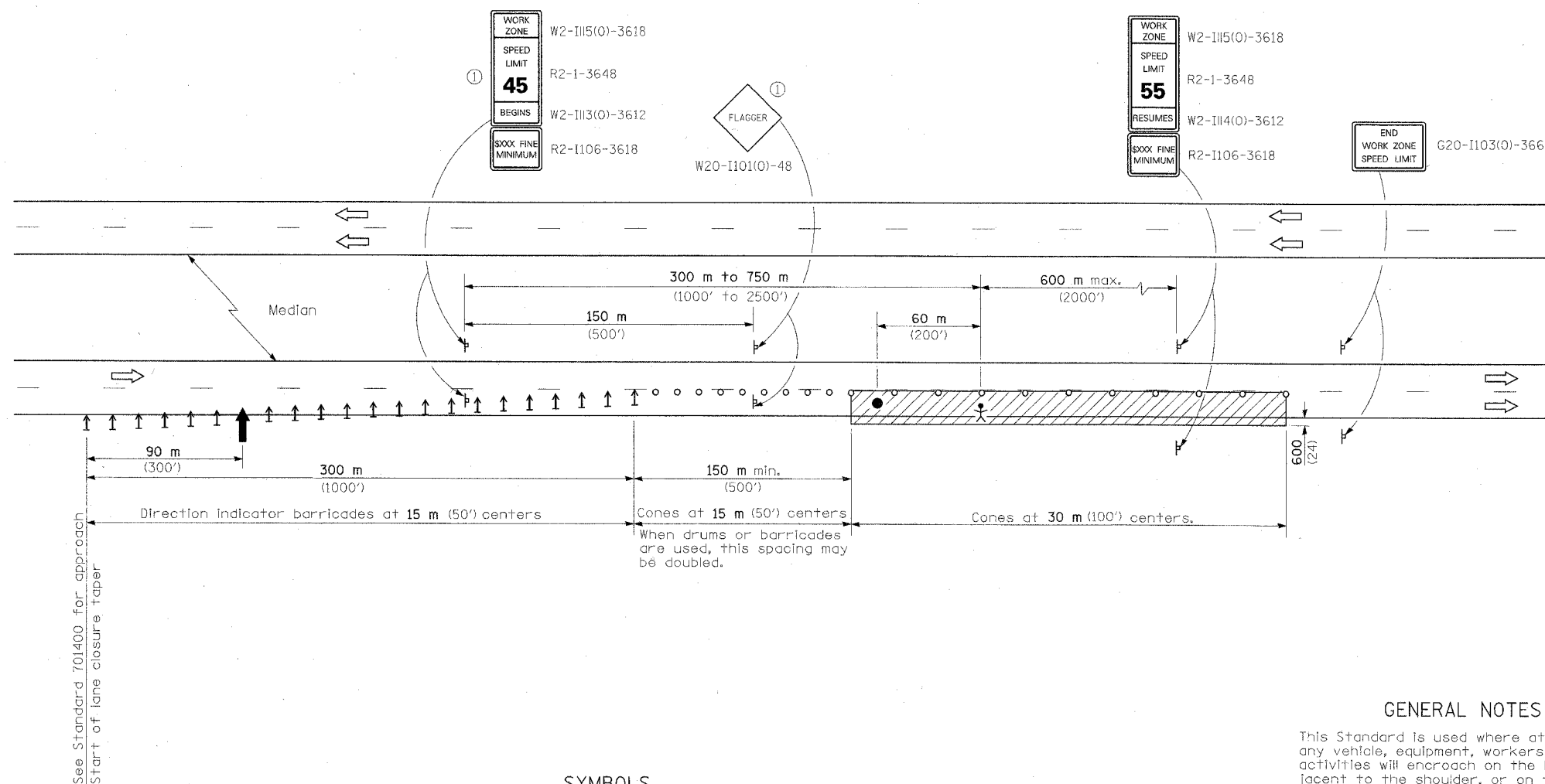


F.A.U. RTE.	SECTION	COUNTY	TOTAL SHEETS	SHEET NO.
332	2007-037TS	COOK/WILL	34	28
STA.		TO STA.		
FED. ROAD DIST. NO.		ILLINOIS FED. AID PROJECT		

D-91-343-07



TYPICAL APPLICATIONS

- Pavement patch
- Utility operations
- Bituminous resurfacing

SYMBOLS

- Arrow board
- Work area
- Worker
- Sign
- Direction indicator barricade
- Cone, drum or barricade
- Flagger with traffic control sign

① Work zone speed limit signs and FLAGGER signs shall be moved as necessary to maintain the required spacing between the signs and the workers in each separate work activity.

GENERAL NOTES

This Standard is used where at any time, any vehicle, equipment, workers or their activities will encroach on the lane adjacent to the shoulder, or on the shoulder within 600 mm (24") of the edge of pavement for day light operation.

This Standard must always be used in combination with Standard 701400.

This Standard also applies when work is being performed in the left lane. Under these conditions, the set up would be a mirror image to what is shown.

All dimensions are in millimeters (Inches) unless otherwise shown.

LANE CLOSURE,
FREEWAY/EXPRESSWAY,
DAY OPERATIONS ONLY

STANDARD 701406-04

PLOT DATE = 11/26/07
FILE NAME = WFL1
PLOT SCALE = #SCALE#
USER NAME = MP-ANNEH

INFRASTRUCTURE ENGINEERING, INC.
33 W. MONROE ST., SUITE 1540
CHICAGO, IL 60603-5322
PHONE 312.425.9560
FAX 312.425.9564

REVISIONS	
NAME	DATE

ILLINOIS DEPARTMENT OF TRANSPORTATION

DISTRICT ONE
EXPRESSWAY LANE CLOSURE
DETAILS

SCALE: VERT.
HORIZ.
DATE 11/26/07

DRAWN BY BL
CHECKED BY ER/TC