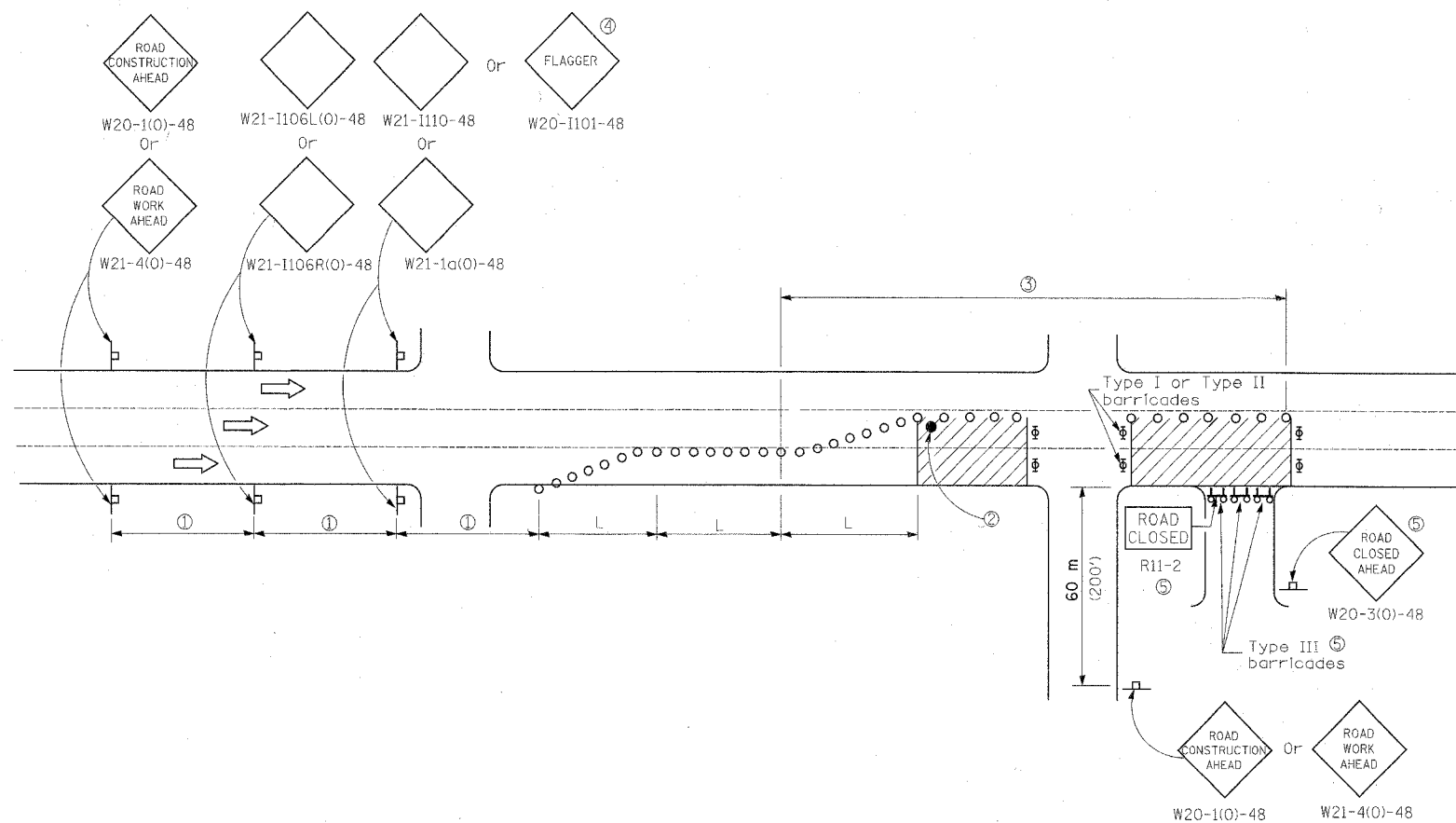


F.A.U. RTE.	SECTION	COUNTY	TOTAL SHEETS	SHEET NO.
332	2007-03TTS	COOK/WILL	34	30
STA.		TO STA.		
FED. ROAD DIST. NO.	ILLINOIS FED. AID PROJECT			

D-91-343-07



All dimensions are in millimeters (Inches) unless otherwise shown.

URBAN LANE CLOSURE,
MULTILANE, 1W OR 2W WITH
NONTRAVERSABLE MEDIAN
(Sheet 2 of 2)

STANDARD 701601-04

PLOT DATE = 11/26/07
PLOT SCALE = 1/8"=1'-0"
USER NAME = RP_MHE

INFRASTRUCTURE ENGINEERING, INC.
33 W. MONROE ST., SUITE 1540
CHICAGO, IL 60603-5322
PHONE 312.425.9560
FAX 312.425.9564

REVISIONS	
NAME	DATE

ILLINOIS DEPARTMENT OF TRANSPORTATION

DISTRICT ONE
EXPRESSWAY LANE CLOSURE
DETAILS

SCALE: VERT.
HORIZ.
DATE 11/26/07

DRAWN BY BL
CHECKED BY ER/TC