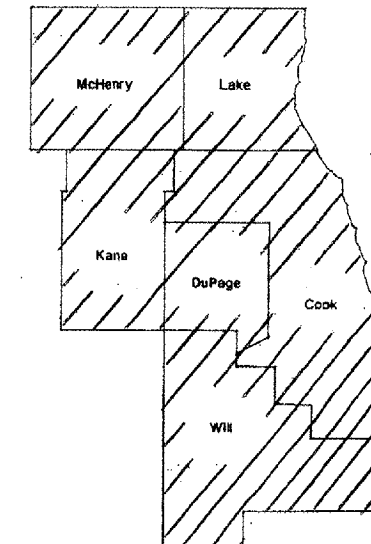


ROUTE	SECTION	COUNTY	TOTAL SHEETS	SHEET NUMBER
VARIOUS	2007-055I	VARIOUS	4	1

CONTRACT 60D48
D-91-028-08

STATE OF ILLINOIS
DEPARTMENT OF TRANSPORTATION
DIVISION OF HIGHWAYS
DISTRICT ONE
PROPOSED HIGHWAY PLANS

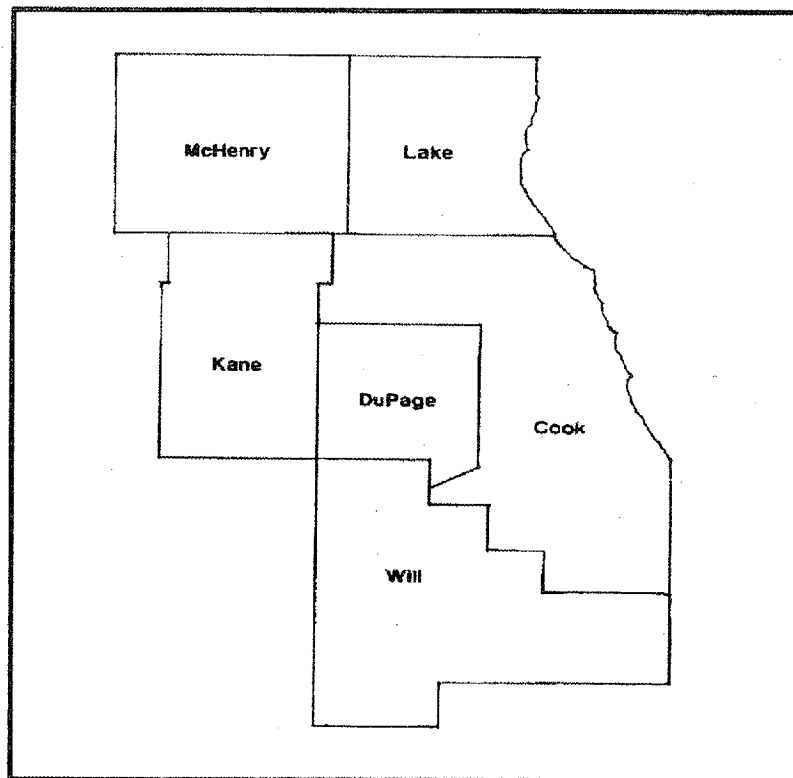
ROUTE: VARIOUS
SECTION 2007-055I
TREE PRUNING AND REMOVAL
VARIOUS COUNTIES
C-91-028-08



LOCATION OF IMPROVEMENT INDICATED THUS: 

FOR INDEX OF SHEETS SEE PAGE 2

**IMPROVEMENT IS IN VARIOUS
LOCATIONS WITHIN DISTRICT
ONE**



STATE OF ILLINOIS
DEPARTMENT OF TRANSPORTATION
DIVISION OF HIGHWAYS
SUBMITTED: Nov. 6 2007
Biane O'Keefe/CJ
DISTRICT ENGINEER
December 7, 2007
Eric E. Harney/RE
ENGINEER OF DESIGN AND ENVIRONMENT
December 7, 2007
Christine M. Reed/RE
DIRECTOR, DIVISION OF HIGHWAYS

**PRINTED BY THE AUTHORITY
OF THE STATE OF ILLINOIS**

J.U.L.I.E.: JOINT UTILITY LOCATION
INFORMATION FOR EXCAVATION
(800) 892-0123

DISTRICT ONE BUREAU OF MAINTENANCE: J. STUMPNER
MAINTENANCE LANDSCAPE DESIGNER: R. WANNER / T. JACKSON (847) 705-4171

CONTRACT 60D48

ROUTE	SECTION	COUNTY	TOTAL SHEETS	SHEET NUMBER
VARIOUS	2007-0551	VARIOUS	4	2

CONTRACT 60D48

INDEX OF SHEETS

- 1) TITLE SHEET
- 2) INDEX OF SHEETS
GENERAL NOTES
STATE STANDARDS
- 3) SUMMARY OF QUANTITIES
- 4) SAMPLE WORK ORDER
- 5) TC-17 TRAFFIC CONTROL DETAILS FOR FREEWAY SHOULDER
CLOSURES PARTIAL RAMP CLOSURES

STATE STANDARDS

701001-01 701006-02 701101-01

701106-01 701901

GENERAL NOTES

GENERAL LOCATION AREAS SHALL BE LIMITED TO DISTRICT ONE PRIMARY ROUTES.

EXACT WORK LOCATIONS WILL BE ISSUED BY THE RESIDENT ENGINEER.

ILLINOIS DEPARTMENT OF TRANSPORTATION

INDEX OF SHEETS
GENERAL NOTES
STATE STANDARDS

ROUTE	SECTION	COUNTY	TOTAL SHEETS	SHEET NUMBER
VARIOUS	2007-055I	VARIOUS	4	3

CONTRACT 60D48

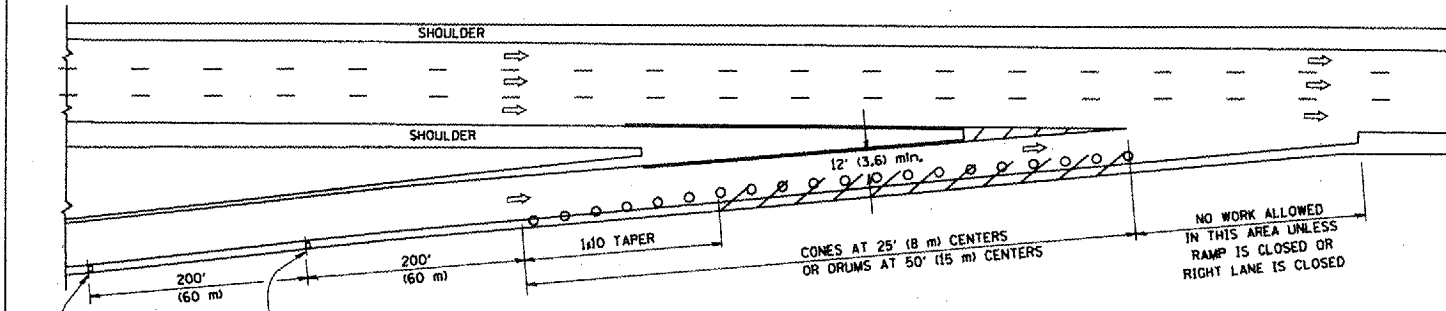
SUMMARY OF QUANTITIES

PAY ITEM	DESCRIPTION	UNIT	Y003	
			100% STATE TOTAL	CONTRACT MAINT FUND
20100110	TREE REMOVAL (6 TO 15 UNITS DIAMETER)	UNIT	1500	1500
20100210	TREE REMOVAL (OVER 15 UNITS DIAMETER)	UNIT	5500	5500
20101300	TREE PRUNING (1 TO 10 INCH DIAMETER)	EACH	25	25
20101350	TREE PRUNING (OVER 10 INCH DIAMETER)	EACH	25	25
67100100	MOBILIZATION	L SUM	1	1
K1003680	MULCH	SQ YD	2400	2400
X0322856	WEED CONTROL, NON-SELECTIVE AND NON-RESIDUAL	GALLON	2	2
X0322859	WEED CONTROL, PRE-EMERGENT GRANULAR HERBICIDE	POUND	100	100
X0325222	WEED CONTROL, BASAL TREATMENT	GALLON	15	15
X2010100	TREE LIMB REMOVAL (4-10 INCHES DIAMETER)	EACH	30	30
X2010200	TREE LIMB REMOVAL (OVER 10 INCHES DIAMETER)	EACH	20	20
X2010300	TREE REMOVAL (UNDER 6 UNITS DIAMETER)	UNIT	250	250
X2010400	STUMP REMOVAL ONLY	UNIT	100	100
Z0064800	SELECTIVE CLEARING	UNIT	12	12
X0325897	SELECTIVE ELM CLEARING	UNIT	17	17

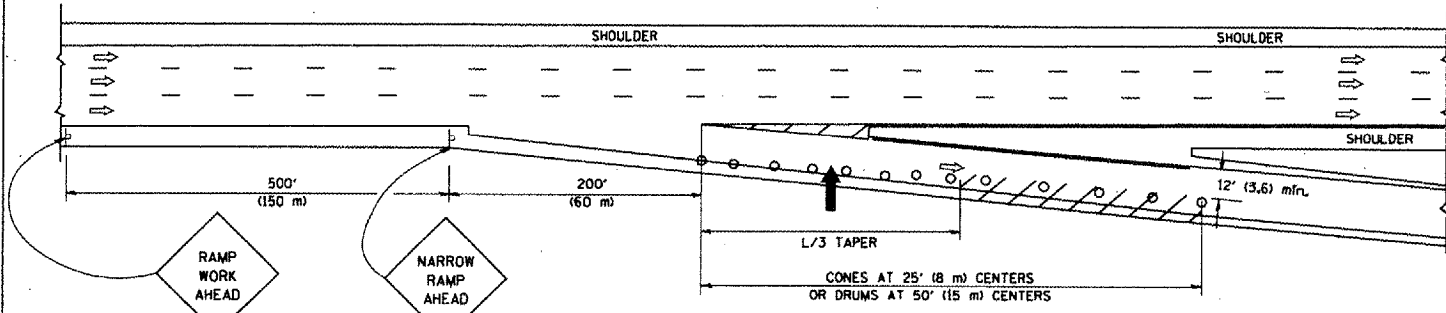
ILLINOIS DEPARTMENT OF TRANSPORTATION

SUMMARY OF QUANTITIES

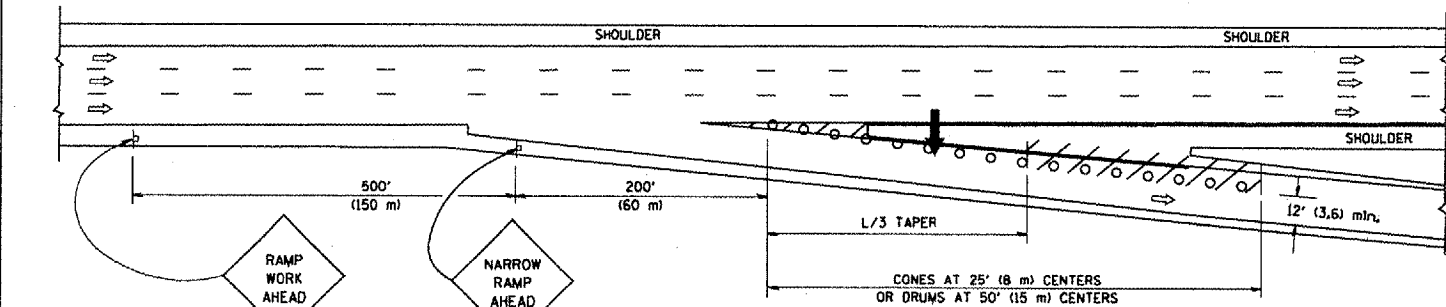
PARTIAL RAMP CLOSURE DETAILS



TYPICAL ENTRANCE RAMP



TYPICAL EXIT RAMP



TYPICAL EXIT RAMP

SYMBOLS

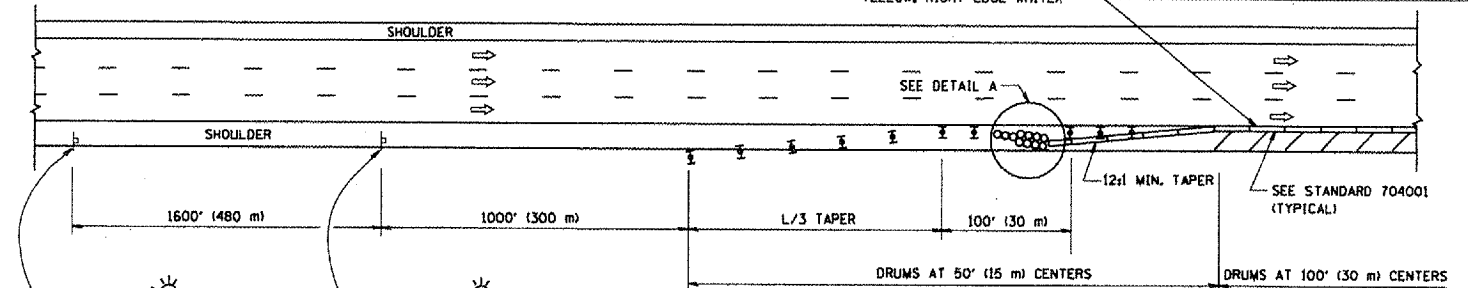
- ➔ ARROWBOARD
- ▨ WORK AREA
- ⊥ SIGN ON PORTABLE OR PERMANENT SUPPORT
- FLAGGER WITH CONTROL SIGN
- ⊠ TYPE II BARRICADE, DRUM OR VERTICAL BARRICADE WITH STEADY BURN MONO-DIRECTIONAL LIGHT
- CONE, DRUM OR BARRICADE

GENERAL NOTES

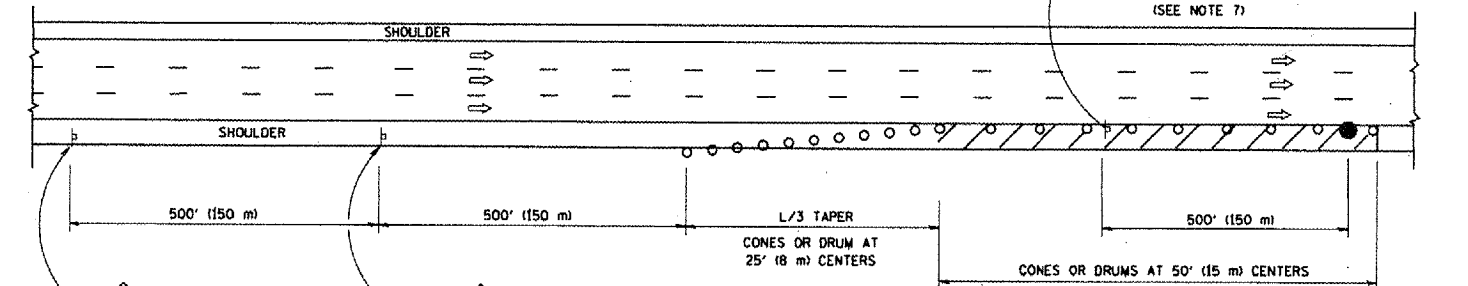
1. THE "L" DISTANCE EQUALS:

SPEED LIMIT	FORMULAS
45 mph (80 km/h) OR GREATER	METRIC: $L=0.65(WHS)$ ENGLISH: $L=(WHS)$
W = WIDTH OF OFFSET IN FEET (METERS)	
S = NORMAL POSTED SPEED MPH (KM/H)	
2. PLASTIC DRUMS WITH HIGH PERFORMANCE REFLECTIVE SHEETING AND STEADY BURNING LIGHTS ARE REQUIRED FOR ALL NIGHTTIME CLOSURES.
3. ALL SIGNS SHALL BE POST MOUNTED IF THE CLOSURE TIME EXCEEDS FOUR DAYS.
4. FLASHING LIGHTS SHALL BE USED DURING THE HOURS OF DARKNESS AND SHALL BE INSTALLED ABOVE THE FIRST TWO SETS OF SIGNS.

SHOULDER CLOSURE DETAILS

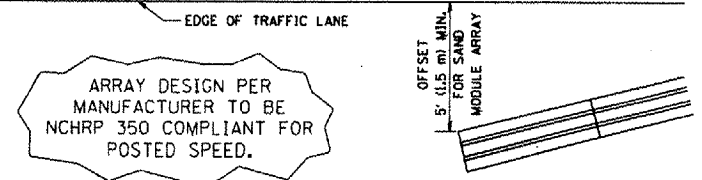


PERMANENT SHOULDER CLOSURE



DAYTIME SHOULDER CLOSURE

THIS DETAIL IS USED WHERE:
1. VEHICLES, EQUIPMENT, WORKERS OR THEIR ACTIVITIES ENCRUSH IN AN AREA CLOSER THAN 15' (4.5 m) TO THE EDGE OF PAVEMENT FOR A PERIOD IN EXCESS OF 15 MINUTES.



DETAIL "A"
IMPACT ATTENUATOR, TEMPORARY
(SEE NOTE 5)

ALL DIMENSIONS ARE IN INCHES (MILLIMETERS) UNLESS OTHERWISE SHOWN.

REVISIONS	
NAME	DATE
DWS	11/96
JAF	12/02
NCHRP 350	04/03
JAF	2/06
SPB	1/07

ILLINOIS DEPARTMENT OF TRANSPORTATION
TRAFFIC CONTROL DETAILS
FOR FREEWAY
SHOULDER CLOSURES
PARTIAL RAMP CLOSURES
DESIGNED BY: DWS
DRAWN BY:
CHECKED BY:
TC-17

PLOT DATE: 07/27/97
 FILE NAME: K:\TRAFFIC\TCD\TCD.dwg
 PLOT SCALE: 0.25" = 1'-0"
 USER NAME: bward